

Elsenham News



**Special Four Page
Centre Spread to help
with the cost of living
crisis**

elsenhamnews@hotmail.co.uk

September 2022

75p where sold

Elsenham Village Regular Monthly or Quarterly Activities

Parish Council 1st **Monday** of month 8pm (excl. Bank Holidays) Memorial Hall

Village Café Coffee 1st & 3rd **Tuesday** 9.30 - 11.30am Memorial Hall

& 2nd & 4th **Tuesday** 9.30 - 11.30am Bowls & Social Club

Henham & District Garden Society 1st **Tuesday** of month 2.30 -4pm Memorial Hall

Community Choir 1st & 3rd **Tuesdays** of the month 7-8.30pm Village Hall

Life Drawing 2nd **Tuesday** of month 7.30 - 9.30 Village Hall

Village History Society 1st **Wednesday** of month quarterly 7.45pm Memorial Hall

Natter Night 2nd **Wednesday** of the month from 7.30pm Bowls & Social Club

Church Lunch Club 2nd & 4th **Friday** of the month 12.30pm Memorial Hall

September diary

Mon 5	Parish Council Meeting	Memorial Hall 8pm
Tues 6 & 20	Village Café Coffee Morning	Memorial Hall 9.30 - 11.30am
Tues 6	Henham & District Garden Soc	Memorial Hall 2.30pm
Tues 6 & 20	Elsenham Community Choir	Village Hall 7pm
Thurs 8	Elsenham Community Assoc	Meeting Memorial Hall 7.45pm
Fri 9 & 23	Church Lunch Club	Memorial Hall 12.30pm
Sat 10	District Councillor's Surgery	Orwell House, Elsenham , CM22 6LA from 12 noon
Sat 10	Lewis Simply Sweet	Bowls & Social Club From 7.30pm
Sun 11	BBQ	Elsenham Church 2-5pm
Tues 13 & 27	Village Café Coffee Morning	Bowls & Social Club 9.30 - 11.30am
Tues 13	Life Drawing	Village Hall 7.30pm
Tues 13	Natter Night	Bowls & Social Club 7.30pm
Wed 14	History Society Meeting	Memorial Hall 7.45 for 8pm
Thurs 15	Elsenham WI	Memorial Hall 7.45pm
Sat 17	U3A Open Day	St John's Church Stansted from 2pm
Sat 17	Bingo	Bowls & Social Club 7.30 for 8pm
Wed 21	Darts Night	Bowls & Social Club (changes to Wednesday from this evening)
Fri 30	MacMillan Coffee Morning	Bowls & Social Club 9.30 -11.30am

Elsenham Village Regular Weekly Activities

Day	Time	Activity	Location
Monday	9.30-10.30am	Zumba	Memorial Hall
	10.30am	Health walk	Start at De Mandeville Green
	7.30-8.30pm	Shape to the beat	Memorial Hall (not 1st Monday)
Tuesday	4.45-5.45pm	Rainbows	Memorial Hall (term-time)
	6-7.15pm	Cubs	Henham Village Hall (term-time)
	6-7.30pm	Brownies	Memorial Hall (term-time)
	7.30-10.30pm	Tennis Club night	Tennis Courts
	8pm	Fitness Yoga/Pilates	Memorial Hall
Wednesday	9.45-11.30am	Tots & Toddlers	Memorial Hall (term-time)
	5.30-7.30pm	Slimming World	Memorial Hall
	5.45-6.45pm	Beavers	Henham Village Hall (term-time)
	7-9pm	Scouts	Henham Village Hall (term-time)
Thursday	9.30-11am	Slimming World	Memorial Hall
	6-7.15pm	Cubs	Henham Village Hall (term-time)
Friday	10-11am	Little Fishes	Memorial Hall (term-time)
	5.45-6.45pm	Beavers Group 2	Henham Village Hall (term-time)
Saturday	9am-12pm	Junior Football	Playing Field
	8.45-9.30am	Little Kickers Mighty	Village Hall (term time)
	9.35-10.20am	Little Kickers Junior	Village Hall (term time)



Mobile Library

**Every third Thursday stopping at Glebe End
11.50 am to 12.20 pm**

September 8 and 29



The **Executives Choice**
Chauffeur Company providing
clients with premium transport
at affordable prices. Airports,
sporting events, theatre trips
etc.

Corporate accounts welcomed.
7 Seater available

To discuss your requirements

Contact Graham Anderson: graham@execschoice.com

Phone 07481 494988

www.execschoice.com

MASKALLS **TREE SURGERY**

Small family business

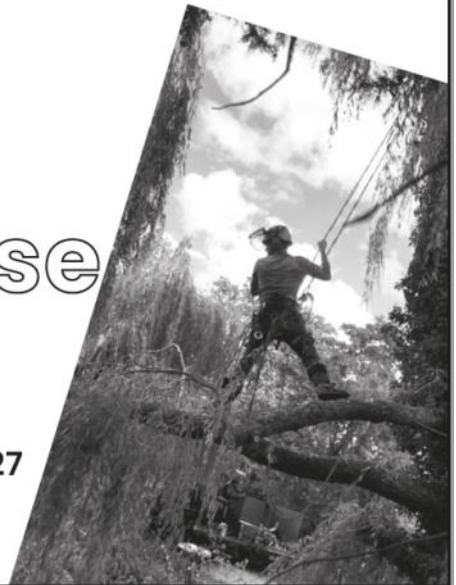
**Big expertise
in trees**

Call George

M: 07982 601 570 | T: 01279 819 127

email: george@maskalls.co.uk

www.maskalls.co.uk



**All types of tree care & hedge cutting undertaken.
Call for a free estimate.**



THE NEWS REPORT

From The Editors



These are hard times for many families up and down the country, with the spiralling energy costs and inflation rampant and causing the cost of essentials to rise almost weekly.

We make no apology therefore for printing a centre spread highlighting areas where you may get help should you be struggling. We sincerely hope this benefits guide (courtesy of Citizens Advice Bureau) is of assistance.

We also make no apology for having as our front cover the 30 mph sign. The roads of Elsenham are becoming a very dangerous place, with so many drivers routinely ignoring the speed limit and putting the lives of residents at risk.

Imagine how you would feel if it were one of your loved ones that is killed by a speeding motorist. Please observe the limit, it is there for a reason.

The village welcomes a new vicar and there are events planned to mark this, so please do look at the Church information. The BBQ is certainly one that should be worth attending and meeting others.

There is some great advice again from our Neighbourhood Watch team and we highly recommend you read it.

Finally, if there is anything on your mind, please feel free to drop us a line—our email address is on the front cover.

Memorial Hall Toilets Refurbishment

The long awaited work has started on the refurbishment of the ladies' & gents' toilets in the Memorial Hall. It is hoped to be completed by October 10. The hall remains in use, but the front door should only be used by the keyholder. Hall users are asked to enter by the double doors opposite the tennis courts or from the garden. The disabled toilet will remain accessible for all to use throughout this time. Thank you for your patience

Regular features

Parish Council	7	Church Calendar	29
District Council Report	9	Ray's Reflections	33
Development Developments	11	History Society	35
Women's Institute	13	Natural Outlook	39
Speed Watch	15	Bowls Club	43
Neighbourhood Watch	17	Tennis Club	45
Elsenham Choir	21	Cookery Corner	47
CAB Benefits Guide	25	Book review	49

Essex Autospray

Your local Collision Repair Centre - Est 1982

- Free Courtesy Cars
- Free Estimates
- Low Bake Ovens
- Blackhawk Alignment



Tel: 01279 816296 E: info@essexautospray.co.uk

www.essexautospray.com

M11 Business Link, Parsonage Lane,

HANDY MAN SERVICES

NEW YEAR LOOK AROUND THE HOME

All decorating in any colours using Dulux paints. All new flooring installs any type light wood, dark wood and oak. Electrical new lighting LED, fittings, sockets, switches change to chrome/brass. Alterations to out houses, garages to extra room, dining room, office and many more.

**Call Dennis Free Quote
07946 231302**



TDC ELECTRICAL Domestic Electrician

Call for your free quote
07960 941 138

AREAS COVERED

Elsenham
Bishop's Stortford
Harlow
Cambridge
and everywhere
in between

ELECTRICAL SERVICES

- Installations
- Maintenance
- Fault-Finding
- New Consumer Units

✉ contact@tdcelectrical.com

🌐 www.tdcelectrical.com

ELSENHAM PARISH COUNCIL 7 MARCH 2022

By Louise Johnson, Clerk. ✉ louise.epc@gmail.com ☎ 07456 791727



The War Memorial in Church Lane, which had been badly damaged by the lorries working in the adjacent field, has still not been repaired. The Parish Council has written to the owner, who assured the council the War Memorial is being restored.

Countryside Properties are submitting a planning application for 130 houses on land South of Henham Road, opposite the Crown Public House. This application is being made to the Planning Inspectorate, bypassing UDC, which is under a Designation Notice.

The Parish Council gave a grant of £250 to Citizens Advice Bureau. They help many people in the village, especially at these difficult times.

If anyone using the buses have any complaints or comments, they can send them to Galleon Travel via their website www.galleontravel.co.uk

Remus Management Company have still not re-installed the bollard at the emergency entrance/exit leading from Elsenham Vale onto Stansted Road. Some residents and delivery vans are using this unauthorized entrance/exit. This entrance has not been approved by Essex Highways and can be dangerous when pulling out on to Stansted Road. Please do not use it, it is for emergency vehicles only.

There are 7 unallocated plots on the Smith Road allotments, these are to be trimmed. But there are also plots that are allocated but are very overgrown. If you have a plot that you are not cultivating, please let the Parish Clerk know if you would like to give it up. Other plot holders work very hard to maintain their plots and seeds from the weeds on uncultivated plots are a constant problem.

It is very sad to see that some of the plants in the flowerbeds around the village have not survived the recent heat wave.

The closing date for the tenders to be submitted for the new play equipment is 8 August 2022.

Now that Bloor Homes have started in earnest on their development for 350 dwellings to the north-east of Henham Road, Elsenham Parish Council have asked for a meeting with them to discuss various matters of interest. The meeting will, as always, be open to the members of the public, who will be given allocated time to ask questions.

The next Parish Council meeting will be Monday 5 September at 8pm in the Memorial Hall. All residents are welcome.



NEED A VENUE?

Elsenham Village Hall currently has availability on Wednesday, Thursday & Friday evenings.

Introductory rate for new bookings (half price for first 4 weeks).

Email Annie at:
elsenhavillagehall@gmail.com

CHIROPODIST & PODIATRIST

Bishop's Stortford

- Orthotics
- Diabetic Foot Care
- Saturday Clinics
- Routine Treatment

R. Handford & Colleagues
H.C. P.C Registered

Bishop's Stortford - 16 Hockerill
Street

01279 652249

www.feet.org.uk

Do-It-4U

Repair, Care & Maintenance

For your Home and Garden

- ◆ Plumbing, Electrical & Carpentry Services
- ◆ Drain Blockages Cleared
- ◆ Gutters Cleaned, Repaired or Replaced
- ◆ Gardens Tidied & Maintained
- ◆ Hedges & Topiary Trimmed & Shaped
- ◆ Fences Erected & Repaired
- ◆ Sheds & Other Sectional Buildings Erected

Telephone
01279 814411
Mobile
07774 877320

DISTRICT COUNCILLORS' REPORT

SEPTEMBER 2022

By Cllr Lees and Cllr LeCount

✉ Cllrlecount@uttlesford.gov.uk

✉ Cllrlees@uttlesford.gov.uk

☎ 07836 346717

☎ 816675



UK Shared Prosperity Fund

The Government has made £1 million available for Uttlesford spread over the next three years [UK Shared Prosperity Fund: prospectus - GOV.UK \(www.gov.uk\)](http://www.gov.uk) as part of its 'levelling up' agenda. Although modest (it amounts to about 2% of our net spending on services over those same three years) it is still very much welcome.

Population changes in our area

The Office for National Statistics has produced this really interesting and engaging presentation on www.ons.gov.uk showing quite how fast and big the changes in our population have been in the ten years between censuses in 2011 and 2021. Uttlesford is not just one of the fastest growing areas in population overall, but also has a vastly disproportionate growth in the number of over 65 year olds, compared to a much, much smaller growth in younger people.

Ukraine refugees

We are pleased that the County Council has now confirmed that they will extend the operation of the Welcome Point at Stansted Airport for a further two months and they will cover the funding gap until DLUHC are able to provide the additional funding. We are also looking into extending the hotel block booking to match that period – the need to accommodate people has been a particular issue during the train strikes as some arrivals have not been able to move on to their destinations. We also made strong representations to the County to get them to speed up the monthly 'thank you' payments due to host families who have welcomed refugee families under the Homes for Ukraine scheme, it seemed bonkers to us that delays at criminal records vetting host families was enough to delay their payments, whilst simultaneously not being enough to block them from being hosts! It is heart warming to meet the refugees in our ward.

Cost of living crisis

There may be a limited amount we can do at the District Council about the cost of living crisis, as we are a relatively small organisation without huge amounts of money – but we are determined to do what we can! We recently pushed through an additional Council Tax benefit worth at least £100 to some of the least well off local residents, on top of similar changes we made for other groups in February, all as part of our local contribution to this much bigger challenge. We are also out to public consultation on continuing with the most generous Council Tax relief scheme in the whole county, under which some of the worst off local people get 87.5% knocked off their Council Tax bills. We hope you have completed our survey and if not, please do, closing date is September 5 www.uttlesford.gov.uk -Have your say. Working with wider community partners, we have directed the officers to develop an anti-poverty/cost of living strategy for the district.

We still have some ward initiative fund to spare .

Our next Surgery is Saturday 10 September at 12 noon, Orwell House, Elsenham , CM22 6LA

replaceglaze.com

Replace, Repair & Revive Your Double Glazing

All types of double glazing repairs, maintenance & installations, including emergency callouts. At replaceglaze.com we provide a reputable, family-run double glazing repair & installation service.

Our services include:

- Double glazing installations, repairs & maintenance
- Aluminium, composite & uPVC installations
- Windows & door handles
- Locks & hinges
- Mistled units
- Patio door wheels
- Door adjustments & lubrication
- Aluminium bifolding doors
- Composite doors
- Aluminium/uPVC roof lanterns



01279 282997 01371 701000

info@replaceglaze.com www.replaceglaze.com

replaceglaze

Luxury Toilet Hire (UK) Ltd



Whether you are arranging a wedding, private party or corporate event, let Luxury Toilet Hire (UK) Ltd provide you with the perfect toilet facility to make your occasion a memorable success.

Cesspit emptying also undertaken.

Tel: 01371 873003 or 01279 504638

Email: info@luxurytoilethire.co.uk

Web: www.luxurytoilethireltd.co.uk

Chillermatic
MOBILE FRIDGE & FREEZER HIRE



We also hire out mobile fridge and freezer units.

Please contact us for a quote:

Tel: 01371 873003 or 01279 504638

Email: info@chillermatic.com Web: www.chillermatic.com

Fiona Gardiner

SKIN & BEAUTY CLINIC
ELSENHAM

**Discover
Skin
Confidence**

At Fiona Gardiner
Skin and Beauty Clinic

AWARD WINNING SKIN THERAPIST 2021

- Cryopen Blemish Removal (Skin Tags, Warts, Sun Spots)
- Facial Rejuvenation
- Expert Laser Skin Treatments
- Clinicare Skin Peels & Facials
- Microdermabrasion & Dermaplane
- Botulinum Toxin Injections

SKIN SCANNING
WITH
OBSERV 320
TECHNOLOGY

SKIN
CONSULTATIONS
JUST
£25!

Elsenham, Essex
07858482728

facebook @fionagardinerbeauty



DEVELOPMENT DEVELOPMENTS

By Graham Mott ☎ 812516 ✉ motts@grahammott.plus.com



The potential developers applying to build 130 homes to the south of the Crown are 'Countryside Properties', surely a name suggestive of a keen sense of humour, since countryside is precisely what they are intent on destroying. They are applying direct to the Planning Inspectorate. Developers of major applications have the option of avoiding Uttlesford District Council, which has been designated by Government on account of too many of their decisions to refuse applications being overturned at appeal. The Parish Council and members of the public can make representations, but they must go to the Inspectorate and not to UDC. Look out for an announcement - the deadline might be before the next issue of *Elsenham News* is published.

What is a 'webinar'? I didn't know quite what to expect when I attended one given by Bloor Homes concerning their 'Phase 2' proposal to tack another 200 houses to the north of the 350 already agreed off Henham Road. It turned out to be completely hopeless, stupid and pointless. There were five or six Bloor Homes representatives who told us, for forty minutes or so, that of course it was stupendous and wonderful and just what we want. Then it was over to us. But the Bloors could be seen and heard and could speak when they liked, whereas we were restricted to typing in questions. I declined to participate on such an unequal basis. The site is wholly In Henham parish - the boundary was re-drawn by agreement between the two parishes so that the agreed scheme for 350 is wholly within Elsenham. The great problem in opposing the development remains the absence of a Local Plan for Uttlesford.

Uttlesford District Council's long-awaited report into the Stansted Airport fiasco has been made public. UDC must pay its own costs and those of the Airport. The best estimates are that UDC's costs will be about £1million, and the Airport has been offered £1.4million - but further costs could be incurred while the amount of the costs is agreed. Any claim that no-one is to blame is clearly silly. A Local Authority does not - certainly should not - lose over £2 million and counting without good reason.

The Inspectors' award of costs against UDC rests on their finding of 'unreasonable behaviour'. UDC's Planning Committee resolved to agree the application in November 2018 and then reversed its decision at an Extraordinary Planning Committee meeting in January 2020. UDC took legal advice from their barrister in March 2019 and when that was not to their liking committed the classic mistake of seeking alternative advice from a QC - and then compounded the error by seeking further advice from another QC. He cautioned that a refusal would probably be followed by an appeal, which would be successful and lead to an application for costs which 'would be very significant indeed'. The Council continued regardless. Council officers did not support the refusal in January 2020. The responsibility for the costs, at current reckoning the equivalent of about £30 for every adult in the district, must rest with the members of Uttlesford District Council.



Double Glazed Units – SAME DAY

- Table Tops
- Shelves
- Emergency Glazing
- Replacement Misted Double Glazing
- Greenhouse Glass
- Cat and Dog Flaps Fitted
- Splash Backs – Any Colour
- Glass Cut To Size
- Emergency Boarding
- Safety Glass
- Mirrors

LOCAL COMPANY – GREAT PRICES – RELIABLE PROMPT SERVICE

Elsenham – Great Dunmow – Bishops Stortford - Stansted



S. PERRY CHAPEL END NURSERY

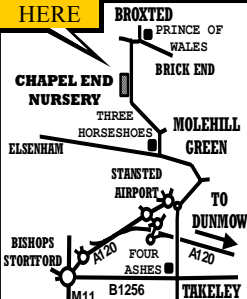
**AUTUMN & WINTER PANSIES
WALLFLOWERS, SPRING BULBS
ALPINES, HERBACEOUS & HERBS, STAKES, TRELIS, OBELISKS**

**WATER SOFTENER
SALT TABLETS 25kg
£12.50 EACH**

**HORTICULTURAL GRIT
COLOURED GRAVELS
PEBBLES COBBLES**

**GODWINS
MULTIPURPOSE COMPOST
60 Litre Bag
£7.75 EACH 3 For £19**

**WE ARE
HERE**



**WOODEN HALF BARRELS
POTTERY POTS AND TUBS**

**OPEN 9am to 5 pm
MONDAY TO SATURDAY (CLOSED SUNDAYS)
MOLEHILL GREEN ROAD
BROXTED DUNMOW ESSEX CM6 2BW
01279 850771
www.chapelendnurserysperry.co.uk**

**VEGETABLE PLANTS
BASKET & TUB PLANTS
ALPINES
HERBACEOUS
HERBS
ROSES
SHRUBS
POND PLANTS
AQUATIC COMPOST
GODWINS COMPOST
WILD BIRD FOOD
SUNDRIES**

ELSENHAM WOMEN'S INSTITUTE

By Moyra Jackson ☎ 647351



I am once again writing this from my garden as the sun is still shining on us all. Gardens are starting to have that parched look that you usually only see in Mediterranean countries and beyond! My watering cans have never had so much use. I am starting to build up muscles carrying them.

Last month we had our first Open Meeting in many years. Simon White of world-renowned rose producers Peter Beales treated us to 'The A-Z Of Roses' with some beautiful photos of a wide selection of roses and gardens. Simon also brought along some roses and other plants to sell including the 'MacMillan Nurse' rose, which proved very popular when he donated one to our Raffle. We had around 50 members, partners and visitors come along and it was a joy to see the hall so full.

Our Bookworms and Cinema Club joined forces this month and went to see 'Where The Crawdads Sing'. Don't believe the discouraging reviews – we all absolutely loved it, whether we had read the book or not. It has wonderful acting and breathtaking cinematography throughout the film.

Our Ladies Who Lunch ventured to pastures new at the Coach and Horses in Newport where we had a lovely lunch and as usual we put the world to rights, leaving just before they could have justifiably started charging us rent.

Our Posh Frocks and Hats Annual Garden Party will be in the glorious surroundings of Gloria and Tony Eatson's fabulous garden in Robin Hood Road on the September 3. Who doesn't enjoy dressing up!

Our monthly meeting is one that the committee especially look forward to – it is Members Day on Thursday 15th September when the members run the entire meeting including taking us through the normal business element, choosing the speaker and any activities, and arranging refreshments. This year it is headed up by Lynda Jolly and Lynda Bowcock and is set to be a fabulous night.

While we are very proud of our Jam and Jerusalem traditions, Elsenham WI is so much more than that and we are always happy to dispel any stereotypes associated with the WI. Why not come along (or come back) – visitors and new members are always welcome.

Details of our programme, events and activities can be found on Facebook, Twitter and Instagram – search for Elsenham WI. Visitors are welcome to our monthly meetings so please come along. We meet at 7.45pm on the third Thursday in the month in the Memorial Hall.

Elsenham WI – There's a lot going on!

hpc (State Registered)
Chiropodist

CH09088

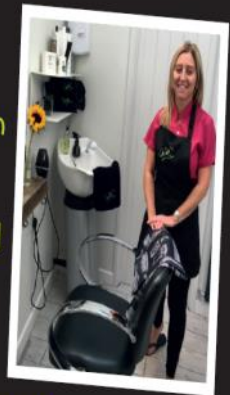
Home Visiting Practice

Mrs. Julie Golden
Est. 1994
01279 873492

A professional service at a
competitive rate

★ ★ ★
Clare's Gents hairstylist
@ Rickling Green

- ★ Appointments from 7am Mon-Sat
- ★ FREE easy parking
- ★ Fully qualified & insured



Call: 01799 542424
Text: 07791 058406

City & Guilds
Qualified 

**TAKELEY IRONING
&
DRY CLEANING**

OPENING TIMES
MONDAY - FRIDAY 8AM - 5PM
SATURDAY 8AM TO 12PM

FREE LOCAL COLLECTION & DELIVERY TO YOUR DOOR

Takeley, Elsenham, Henham, Stansted, Felstead, Hatfield Broad Oak, Hatfield Heath, Sheering, Dunmow, Sawbridgeworth, Broxton, Spellbrook, Molehill Green, Broxton, Little Canfield.

- ✓ WASHING & IRONING
- ✓ IN HOUSE DRY CLEANING
- ✓ 48 HOUR SERVICE
- ✓ DUVETS
- ✓ CURTAINS
- ✓ ALTERATIONS
- ✓ WEDDING DRESSES

The Centre, Dunmow Road (Behind Londis)
Takeley, Bishops Stortford
Herts, CM22 6SH

Email: takeleyironing@gmail.com
takeleydrycleaning@gmail.com

Tel: 01279 871245

COMMUNITY SPEED WATCH

By Frances Lambert ☎ 07771 728332

The aim of CSW is NOT to catch as many speeding drivers as possible, but to raise awareness that excessive speeds are socially unacceptable and is the main contributory factor of fatalities and casualties on Essex roads.



Essex Police and The Safer Essex Roads Partnership support the activity currently being undertaken by local residents in an effort to address and enhance driver behaviour through our villages.

Whilst the volunteers have no powers to sanction a prosecution, offenders' details will be passed on to Essex Police in order that the force can forward correspondence to the registered keeper requesting the driver to respect local speed limits.

Persistent high offenders will be targeted by Essex Police resulting in prosecution. Essex Police remains committed to improving road safety and addressing anti-social use of the County's roads making residents feel safer thus improving their quality of life.

Speed is recognised as a major contributory factor to many fatal and serious injury collisions, and a great deal of time and effort is dedicated to addressing this issue.

Could you volunteer locally for a thriving Girlguiding unit?

Could you spare one to one and a half hours each week, term time only, to come and give young girls the opportunities to learn new skills, experience new things, meet new friends and generally have fun.



If you're up for the challenge we have various units in the area looking for new volunteers, some units require new leaders and assistant leaders to keep them open. Anyone offering to be a leader will have continued support locally and from Girlguiding whilst working towards a leadership qualification.

We have rainbow, brownie and guide units waiting for you to come and volunteer with them so please consider joining a thriving organisation.

If you fancy a new venture and are happy to work with 5-18yr olds, then please get in touch.

Email – Jennifer at ✉ pajemiki@outlook.com or call ☎ 07900 123917.

THE 1:1 DIET

by Cambridge Weight Plan



I'm a 1:1 Diet by Cambridge Weight Plan consultant offering private & personal help to lose weight. Let me help you achieve the results you want with 1:1 support and meal replacement products. Either in person or virtual appointments and orders delivered directly to your door. Over 40 delicious and nutritious products, Not just shakes!

I've helped hundreds of men and women for over eight years to achieve their goals and get results, whether it's dropping a few dress sizes or a jean size, with a plan to suit each individual's needs and medical conditions.

I offer free weekly appointments via FaceTime, WhatsApp, Texts. I'm here to offer 24/7 support.

No sign up fee.

No contract.

What do you have to lose?

I'm based in Church Langley Harlow and I also cover a wide area; Stansted, Elsenham, Dunmow etc .

So get in touch for a free consultation on 07816-393858 or direct message me or check out my App.

<https://eu.jotform.com/app/220534089287360>

www.one2onediet.com/Amanda_S

NEIGHBOURHOOD WATCH

By Frances Lambert ☎ 07771 728332



WhatsApp scam costs victims £1.5million

The National Fraud Intelligence Bureau (NFIB) is warning the public about the continued increase in reports about scams where victims are targeted on WhatsApp by criminals pretending to be someone they know – typically their children.



Between 3rd February 2022 and 21st June

2022, there have been a total of 1235 reports made to Action Fraud linked to this scam, with total reported losses exceeding £1.5mn.

Criminals will usually begin the conversation with “Hello Mum” or “Hello Dad” and will say that they are texting from a new mobile number as their phone was lost or damaged. They will then ask for money to purchase a new one, or claim that they need money urgently to pay a bill.

The criminal will provide bank details for the payment to be made to, with some coming back with further demands for money.

Detective Chief Inspector Craig Mullish, from the City of London Police, said:

“If you receive a message like this from a friend or family member, don’t send any money until you’ve had a chance to call them and confirm their identity. Taking a moment to stop and think before parting with your money or information could keep you safe.”



How to protect yourself:

- **STOP. THINK. CALL.** If a family member or friend makes an unusual request on WhatsApp, always call the person to confirm their identity.
- You can report spam messages or block a sender within WhatsApp. Press and hold on the message bubble, select ‘Report’ and then follow the instructions.
- Never share your account’s activation code (that’s the 6 digit code you receive via SMS)

If you have any information regarding incidents contact Essex Police on '101 or Crimestoppers anonymously on ' 0800 555 111.



**ROTAVATING
NEW LAWNS LAID
ALL GARDEN WORK
UNDERTAKEN
CALL FOR FREE QUOTATION**

 **01279 718555**
 **07930 188920**

JOHN COLEBY

Experienced Interior and Exterior Decorator

For a friendly, reliable service please telephone
01279 815510 or 0793 9070818
for a free estimate



T.J. Patmore
Building Services

- Extensions – Loft Conversions
- Roof work – Carpentry – Roof Tiling
- First and second fix carpentry
- Kitchen fitting
- Built in wardrobes
- Decorating interior and exterior
- Floor and wall tiling
- Fencing – Decking – Patios
- Supply and fix u.p.v.c. windows
- House maintenance

*Call Trevor for friendly help, advice
and FREE estimates*

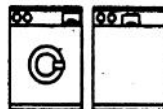
mob 07932 666224



Established 1972
Domestic Appliance Repair Service

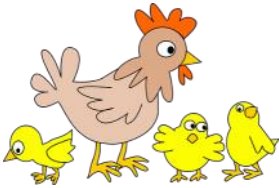
We offer Specialist Dishwasher,
Refrigeration & Cooker Service, in addition
to our long established and renowned
Washing Machine Service

Our Engineers are
Experienced and
Trained to service
most makes



01279 658767

Friendly Prompt Service



Daisy May's Farm
Hall Road, Elsenham, CM22 6DN

“Oh I do like to be beside the seaside”, but let’s face it, it can be a major hassle getting there, but worry not, **Daisy May’s now have a beach!!!** Come and see us, play in the sand and dip your toes in the stream to cool down!



We also have our fabulous **woodland campsite**, and you can stay in the woodland area or in our camper/ caravan paddock where there is lots of space and lovely scenery. Both options include entry to the farm where you can meet our lovely animals and all their babies..... all for just £25 a night AND on your doorstep! Please message us through our Facebook page to book.

We have a fabulous safe area to play in, a picnic area, den building, a woodland trail to explore, themed crafts, refreshments, and ice creams and of course, **lots of animals to see!**



Most importantly, we are now **open EVERYDAY**, so there is no excuse for you not to come and see us! Entry is £5 (under 1’s free) and it really is a fabulous day out for all the family.

Please check our Facebook page for up and coming events and exciting activities..... don’t want to miss out!

There really is so much to do and see at the farm and our

animals just love seeing you all. So do be sure to come and see us over the summer. Can’t wait to see you.



We **always** need help in so many ways, particularly when there is **so** much to do. So if you have a little time to spare, **please** get in touch, we would **love** to hear from you. Please contact ☎ 07747 787973 or take a look at our website 🌐 www.daisymaysfarm.org to find out more. Thank you so much.

Spellbrook Garden Design

DRIVEWAY & GARDEN DESIGN

- ✓ Decorative Walling and Fencing
- ✓ Patios & Paths
- ✓ Block paving, Tarmac and Graveling
- ✓ Decking
- ✓ Turfing, Garden design and build
- ✓ Stone cleaning

spellbrookgardendesign.simdif.com

Tel: 07799 603089 / 01279 503936 / 0800 696 5257

Westwoods, London Rd, Spellbrook CM23 4AH



Checkatrade.com

MyBuilder.com



DECORATING SERVICES ALL ASPECTS OF DIY

NO JOB TOO SMALL

For a friendly reliable service
Just Ask.....

GARY KING

Home : 01279 850001

Mobile : 07951 452602

g.king962@btinternet.com

YOUNG'S

WINDOW CLEANING SERVICE

We specialise in residential properties offering a quality
and regular service for exterior and interior cleans
Serving the Elsenham community for the last 10 years

Call or text Malcolm for a FREE quote
07817 481901

MACMILLAN CANCER SUPPORT

By Elaine Terry ✉ elaine.terry2011@btinternet.com

☎ 07962 586825



Having a Coffee Morning is the perfect chance to catch up over a cuppa and a slice of something delicious for a great cause.

One in two of us will face cancer, and the money we raise at our Coffee Morning will help us make sure no one has to face it alone.

£27 raised by us can pay for a Macmillan nurse to spend an hour with someone who has just been told they have cancer.

WHY WE DO IT

The money raised will help fund the valuable Macmillan services and professionals who ensure no one with cancer has to face the fight alone.

Please join us on our big day, **Friday September 30 from 9.30 to 11.30am**, at the Elsenham Bowls Club, by the playing field, CM22 6BY, and please help support us in any way you can, either by joining us on the day, or by baking a cake or by donating tombola prizes or by making a financial donation. It will all help make a difference to the Macmillan Cancer Support Charity, but whatever you do,

PLEASE DON'T FORGET – thank you.



Please contact Elaine on ☎ 07962 586825 or email me on ✉ elaine.terry2011@btinternet.com and let me know how you can help – many thanks.

ELSENHAM COMMUNITY CHOIR

By Elaine Terry



Did you know that singing can help with self esteem, build self-confidence, support social skill development, promote social inclusion, engage the emotions and most importantly, enable people of all ages to come together to meaningfully create something wonderful? So why don't you try doing something wonderful? Come and join us the first and third Tuesday of every month at 7.00pm until 8.30pm in Elsenham Village Hall.



There are no auditions at our choir and if there is something in particular you like singing, then come along and tell us and we can all give it a try!

Please just turn up or find us on our Elsenham Community Choir Facebook page or call ☎ 07962 586825.



Collector, collator and
relator of life's special
events

Are you planning or considering: a Memorial Service, a Funeral,
Renewal of Vows, a Wedding or a Naming Celebration?

A Celebrant led ceremony will help you
to create special memories of the day.

For more information please contact:

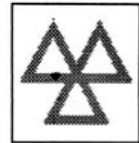
janetterickwood_celebrant@btinternet.com

www.janetterickwoodcelebrant.co.uk ☎ 07889 375200

Facebook @JRCelebrant

GARRETT'S GARAGE SERVICES

42 Golds Business Park, Elsenham
Bishop's Stortford, Herts CM22 6JX



- Mechanical Repairs
- Servicing
- Tyres
- Engine Tuning
- Computer Diagnosis
- Windscreen Repairs
- M.O.T.'s - Catalyst
& Diesel Tested
- E.H.D.C. - Authorised
Hackney Carriage
Testers
- Batteries
- Exhausts

*MODERN WELL
MAINTAINED
WORKSHOP*

ALL MAKES OF VEHICLE

**FREE COLLECTION AND*
*DELIVERY SERVICE**

TEL: 01279 647777 FAX 01279 817622



Namaste Dementia Care – free, one-to-one service launches

St Clare Hospice has launched a new, free service to support people living with advanced dementia, and their carers, across West Essex and East Hertfordshire.

Namaste Dementia Care delivers personalised, one-to-one, Namaste Care activities to people living with dementia in their own homes and in residential homes. Namaste Care offers a person-centred approach and the service involves trained volunteers supporting people with advanced dementia to engage in meaningful activities to promote an improved quality of life. The volunteers visit weekly, for a period of up to 10 weeks, and offer a tailored package of sessions to suit the individual.

To access this service please contact Joanne Morrison on ☎ 07534 031702 or ✉ namastecare@stclarehospice.org.uk. Find out more online: stclarehospice.org.uk/Namaste/

More volunteers are needed to support this new service. Find out more and apply, at stclarehospice.org.uk/volunteervacancies

Saffron Walden St Clare Community Hub

Where: Salvation Army in Saffron Walden, 5 Abbey Lane, CB10 1AG

When: first and third Thursday of every month, 10am – 3pm

The St Clare Community Hub is a twice monthly drop-in event, offering support for local people who are facing a life-limiting or terminal illness. If you, or someone you know, has received the diagnosis of a life-limiting illness, you are welcome to come and visit the St Clare Community Hub.

- 10am–3pm: Advice & support drop-in with the team, including social workers and counsellors.
- 1pm-2.30pm: Drop in for tea & coffee and meet with others living with a life-limiting illness.

Diagnosis of a life-limiting illness brings with it an immediate need to reorganise differing priorities; as well as lots of new potential challenges and concerns medically, emotionally and practically. All of these can create worries that are difficult to manage. The St Clare Community Hub offers a range of holistic support, aimed to help support you with your individual needs.

Find out more here: stclarehospice.org.uk/communityhub or call us on ☎ 01279 773762

ST MARY'S CHURCH ELSENHAM

Office@heuchurch.co.uk

Thought For The Month

Encouragement

The action of giving someone support, confidence, or hope.

The act of trying to stimulate the development of an activity, state, or belief.

When I spoke to you last, I spoke of the celebration on the occasion of her Majesty's Platinum Jubilee. I started with a quotation from her Majesty, which she made on the evening of her Coronation, and in which she expressed the expectation that her subjects "*were united to support me in the task to which I have now been dedicated with such solemnity.*" I therefore set a task for all of you: that you should reflect on this statement and on the definition of the encouragement offered therein, and consider these in respect of the imminent arrival of our new Vicar, Louis Wilson, and his family.

Encouragement is something we all need to keep us motivated, loved, and feeling confident in ourselves and in what we do. It's something that is important for both our mental and physical health, and it can really give us just the same amount of joy to give it to others as it gives us when we receive it. We all know what it can feel like to pursue something—whether it's starting a new job, trying out a new hobby, or trying to make small changes in our lives, and then not to get any feedback or encouragement. You want to give up, and it can feel difficult to stick to one's goals. It can lead to discouragement. Since God created us, and knows this about our personalities,

he has provided many verses in the Bible that not only encourage us, but that also teach us the importance of lifting up those around us. Imagine how our villages might change for the better with a little more encouragement amongst neighbours, instead of complaints.

Now, some of you may be "regulars" at our churches, some may have faith but do not attend; some will attend at Christmas and Easter; some only at weddings, funerals and Christenings; some may have a deep and powerful faith; some may be of different faiths, and some may find concepts of faith, church and religion to be anathema to them.

In all cases, though, if we like to feel ourselves to be "good", then we ought to be able to rise to the task of giving our new Vicar "support, confidence and hope" as he is solemnly dedicated to his new position. On a purely human level, Louis and his family will surely appreciate and need encouragement from all of us, as they will be a family "finding their feet" in an area that is new to them. Friendly faces and helpful advice from all they meet will encourage them to begin to feel at home and to become more confident that they will have a rewarding and enjoyable time in our villages as the result of the support they receive from us all.

This piece is continued on page 46



Elsenham News Four Page Special To Help With The Cost Of Living Crisis

Are you missing out?

If you are facing higher living costs, but have little or no extra money coming in, you may be entitled to some extra financial help if you are:

- out of work
- self-employed
- on a low income
- pregnant
- bringing up children
- disabled or have a long term health condition
- a carer
- an older person

Even if you feel you can manage, you have a right to claim certain benefits. Sometimes claiming a benefit can also help you to access further support. So don't miss out!

You can check what benefits you might be entitled to quickly and easily, using the benefit calculator on the UDC website:

<https://www.uttlesford.gov.uk/article/5078/Online-Benefit-Calculators>

If you don't have internet access, or just need a little extra help, call our friendly advisers on 📞 **01799 618840** and they will carry out a benefit check for you.



Elsenham News Four Page Special To Help With The Cost Of Living Crisis

Benefits include:

Pension Credit

Lots of people who are entitled to Pension Credit aren't claiming it, often simply because they don't know about it.

Pension Credit gives you extra money to help with your living costs if you are over State Pension age and on a low income.

It is separate from your state pension.

Getting Pension Credit means you could also qualify for other financial support, such as Housing Benefit, a free TV licence and other means-tested benefits. You can claim Pension Credit online, over the phone or by post. You will qualify for a higher amount if you are severely disabled or a carer.

You can quickly and easily check if you are eligible online

<https://www.gov.uk/pension-credit-calculator>

or by calling our advisers on 📞 **01799 618840**.

Benefits for families

Half of the eligible families in Uttlesford are missing out on **Healthy start vouchers**. These are available for milk, vitamins and healthy food. They may be available to you if you are on a low income and are pregnant or have a child under the age of 4. You can find out if you are eligible and how you can claim at <https://www.healthystart.nhs.uk/> or by speaking to your midwife or health visitor.

Child Benefit

Can give a big boost to your family budget.

You can claim **Child Benefit** for each child you are responsible for, even if you are working or have savings. You do not have to be their parent to claim.

Payments are tax-free as long as neither parent or carer earns more than £50,000 a year. People who have an income between £50,000 and £60,000 will be taxed but will be better off claiming Child Benefit and paying the tax than not claiming benefit at all (bear in mind that pension contributions are an allowable deduction).

If you are off work looking after your child and not paying National Insurance contributions, claiming Child Benefit will make sure that you get credits towards your State Pension. If you've just had a baby, make sure that you claim before they are 3 months old. <https://www.gov.uk/child-benefit/how-to-claim>



Help with household bills & other essential costs

Help with energy costs or grants to reduce the amount of energy you use.

You might qualify for these if you are on a low income. Contact our advisers for more information on ☎ **01799 618840** warmhomes@uttlesfordca.org.uk

Low-cost broadband plans

This is offered by some providers if you are receiving income-related benefits.

<https://www.uswitch.com/broadband/guides/broadband-deals-for-low-income-families/>

Job Hunting Help

If you have been claiming some income-related benefits for three months, you may be entitled to a **Jobcentre Plus Travel Discount Card**, which can cut the cost of rail and bus fares by up to 50%. Ask at your local Jobcentre Plus.



Elsenham News Four Page Special To Help With The Cost Of Living Crisis

If you have a disability or care needs

Personal Independence Payment (PIP)

This helps with the extra costs of disability or long-term health conditions for people aged 16 and over. It's a non-means-tested benefit, so you can get it regardless of how much you earn, or whether you have savings or capital. Contact 📞 **01799 618840**

If you are caring for someone who is ill or disabled, financial help is available. You don't have to be related to or live with the person you care for. <https://www.gov.uk/browse/benefits/help-for-carers>

Help with NHS Costs

You might be able to get **free NHS prescriptions, dental treatment, eye tests and help with other NHS costs**. The help available depends on your age, income, whether you receive certain benefits, if you are pregnant or have a medical condition. To see if you are eligible go to <https://www.gov.uk/help-nhs-costs>

Our advisers can help check your entitlements and offer support through any application process, should you need it. Our specialist disability benefits team can help with applications for **PIP, Attendance Allowance and Disability Living Allowance (for children under 16)**. Our advice is always free and confidential.

Uttlesford Citizens Advice
Barnards Yard, Saffron Walden
CB11 4EB
📞 **01799 618840**

✉ help@uttlesfordca.org.uk
www.uttlesfordca.org.uk



CHURCH EVENTS IN OUR VILLAGES SEPTEMBER 2022

Church Services

St Mary's, Elsenham 8.45am

Sun 4 BCP Morning Prayer
Sun 11 BCP Holy Communion
Sun 18 Elsenham Village Hall
Sun 25 BCP Morning Prayer

St Peter's, Ugley 10.00am

Sun 4 Morning Service
Sun 11 Morning Service
Sun 18 Elsenham Village Hall
Sun 25 BCP Holy Communion

Elsenham Village Hall 10.15am

Sun 4 Morning Service
Sun 11 Holy Communion
Sun 18 Joint Benefice Morning Service, 10.30am
Sun 25 Morning Service

St Mary's, Henham 11.15am

Sun 4 Morning Service
Sun 11 Morning Service
Sun 18 Elsenham Village Hall
Sun 25 Holy Communion

St Mary's, Henham 6.00pm

Sun 4 Sunday@Six
Sun 11 Sunday@Six
Sun 18 Sunday@Six
Sun 25 Sunday@Six

Events

Licensing Service for the new vicar of Henham, Elsenham & Ugley, Rev. Louis Wilson:

Monday 5th September 2022, 7.30pm

St Mary's Church, Henham, preceded by refreshments, 6.00pm at OSCA, Henham. RSVP to office@heuchurch.co.uk

Sunday 11th September:

Garden Party/BBQ at St Mary's Elsenham, 2.00 pm - 5.00pm.

Saturday 1st October:

Supper & Barn Dance at Henham Village Hall 6.30 -10pm. Tickets £5 from Church Office.

Other Regular Events

St Peter's Junior Church

St Peter's, Ugley 10.00am

Sundays: 11th, 18th & 25th

Elsenham Sunday Club/Explorers

(Y1-Y6) Old Franks, Elsenham

10.15am Sundays: 11th 18th & 25th

Henham Sunday Club/Explorers

(Reception-Y5) Church Hall, Henham

11.00am Sundays: 11th, 18th & 25th

Pathfinders (Y6-Y9)

St Mary's, Henham 6.00pm - leave from service to meet in OSCA

Sundays: 11th, 18th & 25th

Crammin' (Y10-Y13)

St Mary's, Henham 6.00pm followed by 7.00pm at The Church Hall, Henham. Sundays: 11th, 18th & 25th

MID-WEEK AND SATURDAY:

Start the Week with Prayer

Church Hall, Henham 9.30am

Mondays: 5th, 12th, 19th & 26th

Seekers After School Bible Club

(Y3-Y4) Old Frank's 3.20pm

Mondays: 12th, 19th & 26th

Christian Play (Y1-Y2)

Rowan House, Elsenham 3.15pm

Tuesdays: 6th, 13th, 20th, 27th

Little Fishes Pre-School Group

Church Hall, Henham 10.15am

Thursdays: 8th, 15th, 22nd & 29th

Little Fishes Pre-School Group

Elsenham Memorial Hall 10.00am

Fridays: 9th, 16th, 23rd & 30th

Church Lunch Club

Elsenham Memorial Hall 12.30pm

Fridays: 9th & 23rd

Afternoon Tea

OSCA, Henham 2.00pm

Saturday (3rd of Month) 17th

For information on all these events, please contact office@heuchurch.co.uk

Do you have a property to rent?



TBS Homes Ltd

I help property owners achieve a consistent rental income over 3-5 years with no fees and keep the house in show home condition with regular cleaning and inspections.

If you have a 3, 4 or 5 bedroom house please get in touch and see how I can help you.

Phone: 01279 742 340
Text: 07471 370 908

email info@tbshomes.co.uk

**STEPHENS
CHIMNEY
SWEEP**



Insurance Certificate supplied - Fully Insured - Free Smoke Test
Open Fires - Multi Fuel Stoves - Aga - Rayburn - Gas - Oil Stove installations

**CCTV Surveys - Bird Nest Removal
Local Business**

Tel: 0800 112 3600

Mob: 07918 708626

www.stephenschimneysweep.co.uk

 **S.E.P** 
**TREE CARE & GARDEN
MAINTENANCE**

Tree Topping & Felling
Pruning & Pollarding
Hedges cut, Trimmed & Removed
All waste Chipped & Removed
Garden, Garage & Site Clearance
Gravel Driveways & Paths
Fencing

Turf Supplied & Laid
Jet Washing Paths & Driveways
Local Tradesman

20 years experience
For a free estimate Phone

**07903 621657
08000 588057**

14 Day Cooling off Period



**N.M.S
Window Cleaning
Service**

Cobwebs removed, Windows, Frames and sills washed, doors cleaned as required.

**Water fed pole system
Traditional**

07470291463

ST MARY'S FABRIC FUND ELSENHAM

Registered Charity No 1052884

By David Hill ☎ 812397



Don't forget – BBQ Sunday September 11!

Your church fabric fund is holding a garden party and BBQ up at the church to welcome our new vicar, the Rev Louis Wilson and his family. Sunday September 11 from 2 to 5 pm. There will be food, drinks, children's games but no entry fee (and hopefully good weather).

All welcome, but if you are able to help with preparation, serving food, games, car parking and so forth, please contact Elizabeth Barker ☎ 01279 813543) or any member of the committee.

It should be a great afternoon, and we look forward to seeing you there.

ELSENHAM VILLAGE CAFÉ

By Sue Waite

What an amazing turn out we had for our Breast Cancer Now fundraiser last month. We worked hard in getting the hall ready and then worried needlessly that no one would come. The villagers of Elsenham and beyond turned out in their droves to support this important charity. Thank you all so much. Our fundraiser raised over £1200.

We had games galore and more cake than anyone could eat. Our pot of gold was won by Liz Fanning who took home half the takings which amounted to £31. Well done Liz. Guess the Weight of the cake was won by Debbie Sales. Our flamingo's name turned out to be Flora and this was rightly guessed by Louise Johnson. Margaret Shaw guesstimated the nearest amount of scones. I'm not too sure who won the sweets or the strawberries but well done to you too.

We had an absolutely fantastic raffle with all the prizes being donated by local businesses and villagers. Lots and lots of thanks are due: South Street Pantry, Cooks, and Wilko in Bishops Stortford. The Co op, Yeomans, Vanity Fair, the Tanning Shop and Paris Legore in Stansted. The Golf Club, The Bowls Club, our lovely Post Office, Tesco Express, Options, the savoury platter from Star Buffets, Jo Nails, Alex at the Station – thank you so much. Chris Mowbray for his beautiful garden sculptures, Jane Rose from Amelia Rose, Telmarra Farm gave us trays of eggs.

Villagers, you were all so incredibly generous with your donations of money (thank you Nick Herbert for your £100 cheque) and cakes, your valuable time helping us get the hall ready, working with us on the games and in the kitchen and tidying everything way – Debbie, Lynda J, Lynda B, Kathie, Penny, Sue Coleman on the raffle with Chris Waite – Chris you were so good helping us set up the hall.

Options Hair Design and Hair Loss Clinic

An essential choice with a passion for hair

We welcome you with a complete in-depth consultation, whether this is for a change of style or colour or for more clinical advice on the health of your hair and scalp.

For clients visiting The Hair Loss Clinic we are able to offer a completely private consultation and treatment room away from the main salon. We offer proven treatments for hair loss and also provide a complete wig fitting and finishing service. We work closely with a leading UK Trichologist who holds regular clinics with our clients.

Our products are organic and formulated to enhance your hair health. Our dedicated stylists will work with you to achieve the look and feel that you want. Our salon has parking right outside and a warm welcome awaits you.

Elsenham Salon 01279 812665

Bookings not always necessary

Hair Loss Clients please call Ann on
07957 166436

www.optionssalon.co.uk



S.D.S
INSTALLATIONS

SDS Installations Ltd

AERIAL AND SATELLITE SERVICES
FOREIGN SATELLITE SYSTEMS - CCTV - EXTRA TV POINTS - SKY LINK UPS
PHONE POINTS - HOME SIGNAL DISTRIBUTION - WALL MOUNTED PLASMA/
LCD SCREENS - CABLES SUPPLIED AND HIDDEN

Alan Smith
50 Sunnyside
Stansted
Essex CM24 8AX

01279 279012
07771 881042
sdsinstallations@hotmail.com
sdsinstallations.com

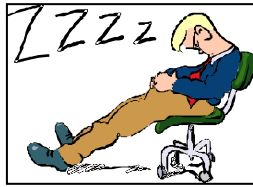
Taylor Computer Services (Stansted)

On-site Computer Maintenance/Repairs

DON'T BE RESTRICTED TO OFFICE HOURS, I CAN VISIT YOUR HOME OR OFFICE DURING THE DAY, EVENINGS OR WEEKENDS AT A TIME TO SUIT YOU.

Email and Broadband Setup, Data Transfers/Data Recovery, Hardware & Software Installation, Virus & Spyware Removal & Protection, New PC Setup & Training

Call Derrick on 01279 816418 ~ 07926 289749
Email: Info@tcsstansted.co.uk



The street where we live- Gilbey Cottages By John & Hilary Todd

We moved to Gilbey Cottages in March 1976, into No 11, where Mr & Mrs Jaggard once lived. We had not moved very far, having previously lived in Mill Close, so knew GC very well. We now needed three bedrooms.

In 1976 only a couple of Gilbey Cottages houses were privately owned. They had no central heating, and were difficult to keep warm - the Crittal windows did not help. Ice on the inside! The houses have open fireplaces, one in the master bedroom.

Coal and other household refuse were burned in the Rayburn stove fire pit. Joined to this was an oven, in which you could bake the most wonderful slow-cooked meals and cakes. High sided Yorkshire puddings! Now and then someone's chimney would ignite and the fire brigade would attend. The chimney sweep was a common sight.

Occasionally the scissor-grinding man would show up on his bicycle. The back gardens are the long, post-war type. The rear access road was nothing more than a cinder track. This ran alongside Willis Toys, where Saunders Close is now situated. The track was tarmacked in the 1990s. The slip road at the front was resurfaced and each end widened to allow for ease of vehicle turning. Horse chestnut trees were planted, which soften the view to the main road.

The years rolled by with our children attending the village school and then in Stansted Mountfitchet.

Following the purchase of more of these homes, there followed new front doors, windows, extensions, conservatories and solar panels. Connection to the gas supply meant that central heating could be enjoyed. Much cleaner, but that "chuck everything on it" fire was sorely missed!

This street has seen tragedy. The 1980s saw a teenage resident and her dog killed on the railway track at Fullers End. Early in the 2000s, a young mother was murdered. A young man lost his life in 2012 within his burning home. There have been other untimely deaths. A recent car explosion shows that country life is not exempt from modern blights.

Elsenham has given us all we've needed: a home, school, surgery, church, shops, pub, sports clubs and transport links; friends and neighbours. Amid much development, we hope that Elsenham retains its 'village' feel.

DANIEL ROBINSON & SONS

Independent Family Funeral Directors & Monumental Masons

Est 1892

Always here when you need us...

- Arrangements in the comfort of your own home, if preferred
- Private Chapel of Rest
- Pre-paid funeral planning services
- Traditional & contemporary funerals to suit your wishes



79/81 South Street
BISHOP'S STORTFORD
01279 655477

www.drobinson.co.uk



- alun
- design
- consultancy
- architectural design
- planning
- project management
- interior design

Local architecture company with over 25 years experience designing and obtaining approval for new homes, extensions and conversions

Free consultation
01799 540 600

info@alundesign.com

www.alundesign.com

Neville House, Station Road,
Wendens Ambo, Saffron
Walden, Essex, CB11 4LB

ELSENHAM VILLAGE HISTORY SOCIETY

By Mike Rea, Secretary ☎ 813634 ✉ evhs12@hotmail.co.uk

🌐 www.elsenhams-history.co.uk



As I look out of the window at this green, sorry, somewhat brown and pleasant land, I am reflecting on what can happen when water is not as plentiful as it should be. It may therefore be surprising to present day residents of Elsenham to learn that mains water did not arrive in the village until 1938 when a supply was laid in from Henham. This supply served the High Street, Robin Hood Road and Station Road. Residents in Stansted Road had to wait a few years more for a new main to be laid in from Stansted.

Up until that time water was only available from a few pumps dotted around the village, many in private hands. To improve villagers' access to fresh water, in 1896 Sir Walter Gilbey built the pump house at the foot of Park Road as a memorial to his late wife. The original shaft was dug eighty three feet deep and then bored considerably deeper by G. Ingold, who fabricated many pumps in the local area. No one knows for sure just how deep the shaft goes but estimates range from 120 to 150 feet. It served the village until the late 1950s when the shaft showed signs of collapse and the pump was deemed too dangerous to use. The pump itself was removed and a concrete cap placed over the shaft. The only part of the pump still surviving is the handle. Originally, the roof of the pump house was covered in gold leaf and was visible for miles around. As a consequence it had to be covered in tarpaulins during the World Wars to avoid being used as a navigation aid by the enemy.

If you find it surprising that mains water didn't arrive until 1938, you will be even more surprised to find that mains sewage didn't come to the village until 1974. Up until that time householders had to rely on septic tanks and, in some cases, an old fashioned privy. With large parts of Elsenham being built on clay, heavy rain (what's that you ask) would fill the tanks, lifting manhole covers and depositing water and other "material" on the surrounding area. The last house was connected in August 1984 and it was said at the time that this would be the last hurdle that would allow for the expansion of the village. They were not wrong!

At this month's meeting on Wednesday September 14 (8pm in the Memorial Hall) our speaker will be Ken MacDonald from the 100 Parishes Society. He will be giving an illustrated talk extolling the virtues of this picturesque area of Northwest Essex, Northeast Hertfordshire and southern Cambridgeshire. It is largely unspoilt and richly endowed with many fine examples of agricultural and built heritage

Membership costs just five pounds a year that will allow admission to four meetings which will all feature interesting speakers on a wide range of subjects. Visitors are also very welcome to any of our meetings for just two pounds per evening, we look forward to seeing you soon.

GLYNN'S CHIMNEY SWEEPS

Est. 1995



VACUUM AND BRUSH

NACS MEMBERS HETAS APPROVED

COMPETITIVELY PRICED

01279 424983

www.glynnschimneysweeps.com

E. N.C. Electrical Limited

Industrial Agricultural Domestic

Electrical Installations

Fire Alarms/Emergency Lighting

Fault Finding

Portable Appliance Testing

Fixed Wiring Test & Inspection

Over 25 Years Experience in the
Electrical Industry

Contact: Ian Arran

Tel. 01279 647042
Mobile 07776 252994



Email: encelectri-calltd@btinternet.com

44 Alsa Gardens Elsenham

Bishop's Stortford Herts, CM22 6HB

BOSS

PROFESSIONAL CLEANING SERVICES

- ✧ Windows
- ✧ Conservatories
- ✧ UPVC Soffits & Fascias
- ✧ Gutters
- ✧ Patio & Driveway Cleaning

We're a family run business based in Herts & Essex with more than 20 years experience. We provide one-off or regular visits, it's up to you. Very friendly - No job too big or small

Contact: Tony

Tel: 07977 970 371

Email: tony@boss-cleaning.co.uk

Website: www.boss-cleaning.co.uk



The title of our talk at our meeting in July was ‘Boom and Bust in Medieval Lavenham’ Jane Gosling, former National Trust manager of the Guildhall in Lavenham and director of the Suffolk Architectural Heritage Trust, explained how the fortunes of picturesque Lavenham derived from its weaving of its own best-selling brand of sturdy cloth dyed a distinctive shade of blue.

The clothiers became very wealthy men and the hub of prosperity and employment in this Suffolk town, drawing in supplies of raw wool from other areas of the country and even beyond. Their heyday was however short lived as in the second half of the sixteenth century their market became flooded with finer, more fashionable Flemish cloths imported from the Low Countries.

Their sudden loss of income meant their fine timber houses were never pulled down and replaced according to the taste of subsequent centuries though some had brickwork Georgian or Victorian facades applied.



Lavenham

The U3a will have a stand at the Stansted Windmill Fete on Bank Holiday Monday. Do call by and have a chat.

We are also holding an OPEN DAY on Saturday September 17 in St John’s Church, Chapel Hill, 2-5pm We hope that you will come along to either event and find out about the many interesting groups that you can join once a member of the U3a. One of them is The U3a Choir conducted by Isobel Bradshaw who will be presenting ‘Stansted Sings for You’ in St John’s Church on 1st October. Tickets are £10 and will include a glass of wine. Children under 14 are half price. Please contact Jean ☎ 01279 850275 or Susie ☎ 07803 802617 for more information. Parking will be available in the Magna Carta School car park behind the church and Crafton Green car park at the top of Chapel Hill.

GARDEN HINT

Remove any shading from glasshouses to aid ripening of late tomatoes, peppers, chillis and aubergines.

D BONNEY & SONS MANUDEN MOTOR VEHICLE ENGINEERS

MOT TESTING

ALL MAKES OF VEHICLES SERVICED INCLUDING FOUR WHEEL
DRIVES

TRW BRAKE CENTRE

DIAGNOSTIC AND FAULT FINDING

WELDING AND CHASSIS REPAIRS

SELECTION OF USED CARS

CALOR GAS STOCKIST

WE HELP YOU THE MOTORIST WITH A CHEAPER LABOUR RATE

GUARANTEED WORKMANSHIP

FREE COLLECTION AND DELIVERY IN LOCAL AREA

PLEASE RING: MALC, NEIL OR CRAIG

 **01279 813315 OR**  **01279 815946**

NEW BEGINNINGS COUNSELLING

A safe environment to explore your thoughts and feelings

A private practice with parking based in Takeley

Represented by Michele Simpson MBACP

Ever felt sad, overwhelmed, lost or just not quite right? Most people at some point in their lives have felt so overwhelmed that they find it impossible to see a way out of a situation.

My beliefs are that everybody has the resources within themselves, given the right environment, to experience therapeutic change. Give me a call to see how I can help you to improve your life.

Counselling could enable you to have that new beginning

phone: 07956 224954 or 01279 879009

email: ms@newbeginningscounselling.co.uk

www.newbeginningscounselling.co.uk



**Advertise your
business in Elsenham
News**

Contact us at
elsenhamnews@hotmail.co.uk

NATURAL OUTLOOK

By Heather Salvidge ☞ 814153



Given the dry summer we have been having, I can't really say what to expect, except to record what September is 'usually' like. The temperature varies between a near frost early and middays reaching the upper 20s or more. Days are shorter so that day-feeding birds are kept busy and night time feeders, e.g. owls have more time. And, usually, there is RAIN, sometimes lots of it, and a least one gale. The forecast for August showed no rain, locally, until into week two.

Many trees will be suffering and react by dropping leaves earlier than standard, having smaller fruiting berries, losing twigs, limbs or dying. Already in August this was starting to happen – the whitebeams in Station Road were an example. Blackberry bushes won't set so much fruit because they haven't had enough water.

Flowers, whether wild or garden grown, tend to bloom early but don't last long or shrivel; for instance I don't think my buddleias will have much to offer bees and butterflies after the first week. This will have an impact on all the insects that rely on them for sources of nectar. And there may be fewer Daddy-long-legs if the leather jackets are stuck in the ground. For unless the rain has got to us by now, the soil will be baked so hard that birds such as blackbirds and robins will find it very difficult to get at insects or worms.

Swifts are long gone, on their way back to Africa, but our house martins have, on the whole, left the centre of the village and, I guess, gone to better feeding grounds i.e. local farmland or by Stansted Brook or the balancing ponds where the water will attract more insects. The swallows no longer nest in the centre and have moved to the Ugley Green area or nearer Elsenham Hall or beyond to sites such as farms.

But so long as there are *some* flowers about, there will be some butterflies and moths, daytime or night flyers. For instance, this year, there have been hummingbird hawk moths and even elephant hawk moths about the village, two quite lovely creatures. The smaller hummingbird one has long antennae, beige/grey patterned forewings and pale orange underwings. The elephant one is larger, has pale pink antennae, pink borders to its wings and pink stripes on a yellow/tan ground. They both hover quite close to the plant they are feeding on. Quite exotic.

By the end of the month the outward migration of our summer visitors starts to be compensated by the arrival of birds from farther north, e.g. fieldfares, red wings and wild brent geese on the coast and whooper swans inland, try the Welney Reserve.

But if it doesn't rain at the start of the month you could put out water for the birds and a passing hedgehog to give them something to drink.

01279 871 777 - 0800 587 2556

6 Newman Road, Little Canfield, Dunmow, Essex, CM6 1GR

MEDIACOMS

Aerial Satellite AV Security

- Aerial Installations
- CCTV & Security Alarms
- Audio Visual Installations
- Wireless & Wired Networks
- Solar Panel Installations
- Sky Installations & Subscriptions
- Freesat Installations & Receivers
- Multiroom Music & TV Distribution
- TV Wall Mounting Services
- Family Run Business



www.mediacom.com

info@mediacom.com



Pike's Plumbing & Heating

Whether you're looking for a plumber or heating engineer, Pike's Plumbing & Heating can help.

If it's an emergency, simple problem or you're just thinking about a new boiler or bathroom give me a call – I'm available when you need me 24/7. Now's a good time to think about servicing your boiler too and make sure you're not left out in the cold! **No Call-Out Charges & Free Quotations**

Tel: 07889 140035

Email: info@pikesph.co.uk

Web: www.pikesph.co.uk

Craig Pike



THE HUNDRED PARISHES SOCIETY

🌐 www.hundredparishes.org.uk

Ken McDonald, Secretary



One pleasurable autumn task is the harvesting of ripened fruits from trees in your own garden. For most of us, our cooking apple will be a Bramley's Seedling and the dessert apple an Essex-bred Discovery or a Cox's Orange Pippin. Originating from central Asia, apples are incredibly varied with at least 2,000 named varieties! There are 150 named varieties in the gardens at Audley End.

In the 19th century the skilled horticulturalists at the Rivers Nursery at Sawbridgeworth (right) bred and propagated many varieties of fruit trees, including the prolific Czar plum and Conference pear, both of which are still available today. The Conference pear features in Great Chesterford's 21st-century community orchard (below).



For commercial reasons, the range available from modern plant nurseries is limited to a few easy-to-grow varieties. However, hidden away in forgotten corners of long-established gardens within the Hundred Parishes there will be specimens of heritage varieties of orchard trees. If you have a flavoursome, but unidentified, variety, then the team at the East of England Apples and Orchards Project would be delighted to hear from you.

Further information on <https://www.applesandorchards.org.uk> ☎ 01328 838403 or ✉ info@applesandorchards.org.uk

There is something special about growing a unique or local variety, so if you wish to plant heritage fruit trees specific to your own county, this organisation's catalogue lists a surprising number of varieties for Essex, Hertfordshire or Cambridgeshire apples and pears, as well as local plums, cherries and gages. This wide selection provides an opportunity to continue a long tradition of choosing something rather special to enjoy eating in future years.

The Whats On page at www.hundredparishes.org.uk often displays local apple events, for example at Rivers Orchard in Sawbridgeworth on September 4, 18 and 24 and at The Gardens of Easton Lodge on September 25.

The Hundred Parishes is 450 square miles of northwest Essex, northeast Hertfordshire and southern Cambridgeshire that is largely unspoilt and is richly endowed with many fine examples of agricultural and built heritage. The area has shared a common history which shaped and preserved its distinctive landscape of small and medium-sized farms linked by winding lanes and ancient rights of way to hamlets, villages and then to small market towns. For more information visit www.hundredparishes.org.uk.

EAT, DRINK & HIT BALLS



TOPTRACER

DRIVING RANGE!

CELEBRATE AN EVENT WITH US TOO!
SUITABLE FOR ADULTS & CHILDREN

SEE OUR WEBSITE FOR OUR COVID-SAFE PROCEDURE
Golf World Stansted, Hall Road, Nr Stansted Airport, Essex, CM22 6FL
01279 812 865 | leanne@golfworldstansted.co.uk



Golf World

@stanstedgolf



Binwash
We clean your wheelie bins!
Commercial & Domestic



Monthly Cleaning from just £4.50!
Professional equipment
Same day as waste collection

www.binwash-uk.com
01799 529899
enquiries@binwash-uk.com

BMH
WINDOW CLEANING
CHERRY PICKER HIRE
(12.5M)
Window Cleaning
Gutter Cleaning
Commercial Window Cleaning
Excellent Rates
Professional & Trustworthy
Fully Insured
References on request
07852 722139
"Get rid of the grime with a Tony shine"

ELSENHAM BOWLS AND SOCIAL CLUB

By Sue Waite



Hello everyone, we hope you are well and enjoying the good weather. For those of you who bowl, there is much to occupy you at the bowls club – internal games, friendlies and league games and lots more. We do struggle at times to find members to play in the games with COVID rearing its head again and lots of us with other commitments so if you fancy giving the game a go then get in touch with Trevor Hackett and he can arrange for you to give bowls a try.

Just to update you on a few results of games that we have played. We recently played Ladies versus Gents – we were one lady short so John Coleby gallantly donned one of his wife’s skirts and became a lady for the – thank you John. Even with John’s help the ladies lost again for another year. Better luck next time. We have also played the Platt/Valender Trophy (Jean Platt and Dave Valender, long standing members of the bowls club). This was a drawn pairs competition and was won by Trevor Hackett and John Todd – many congratulations to you both.

It seems that no sooner do we have the good weather and the bowls season is in full swing, then it is almost over and we start thinking of what to do through the long winter months. Coming soon will be the Crib and Pool leagues, Short mat bowls and darts.

As you know the bar is open on Monday – Friday from 7 p.m. and members are welcome to come in for a drink – non-members can be signed in. On Mondays we have crib practice or play whist. If you fancy learning how to play then come along any Monday. The pool table is always available or you can play darts. On Thursday the darts team play and they are always looking for new members.

There is always bingo with the lovely Mr Franklin as caller – dates are on page 2.

Simply Swing is returning to the bowls club on Saturday, 10th September, tickets £10. Last but not least, many congratulations to Ann Marie Dickason, who won £20 on the target bowls at the Village Fete.

From The Parish Registers

Funeral:

Service of Thanksgiving on 21 July 2022 at Elsenham Church, followed by cremation, Patricia Grout, aged 85 years, formerly of Glebe End, Elsenham.

Burial of Ashes:

On 3rd August 2022 at Henham Churchyard, Gladys Doreen Suckling.

Church Contact Details

Church Office	01279 814285	Anna Hicks
Church e-mail address		office@heuchurch.co.uk
Church web-site address		www.heuchurch.co.uk

Mat Duxbury

PAINTING

Professional Interior and Exterior Painting Specialist

References available on request

20 Years' experience

Fully Insured

NVQ Qualified and Health and Safety Certified

Local, reliable and friendly service guaranteed

For a free estimate please contact Mat on ☎ 07810 250426 or
email ✉ mat@duxburypainting.co.uk

ELSENHAM



CLEAR OVENS

Oven Cleaning Specialists

01279 89 89 96

we accept cards!
VISA

Make your oven look showroom fresh
with a professional clean from **Clear Ovens**.
Our fully insured expert technicians will
make it shine like new.



Instagram



The Association of
Approved Oven Cleaners



MEMBER OF THE FEDERATION
OF SMALL BUSINESSES

Covering Sawbridgeworth, Harlow
Epping, Great Dunmow, Braintree,
Stansted, Bishop's Stortford and
surrounding areas.

01279 89 89 96 or visit us online at
www.clearovens.co.uk

The difference is clear

ELSENHAM TENNIS CLUB

By Petra Studholme 📞 814667



Half price membership available as of 1 October

We will be offering half-price membership from 1 October to 31 March next year so you can join Elsenham Tennis Club for as little as £35 as a full adult member, £8 as a junior. Student, senior, couples and family rates also half-price. To find out more about us, go to www.elsenhamtennisclub.co.uk. Please note that the prices you see right now are full membership from 1 April to 31 August. The new rates will only be open to book as of 1 October. If you are interested now, please get in touch via email ✉ mail@elsenhamtennisclub.co.uk.

Follow us on Facebook

We have a Facebook page <https://www.facebook.com/groups/639178516148087> so find out more about us there.

Hire our courts – open to non-members

Try before you join – why not hire our courts to play with friends and family - £2 per adult, £1 for students and 50p for under 18s. You can email us or message on Facebook for availabilities, but please if possible give us 24hrs notice as we need to arrange to open the courts for you.

Club nights Tuesday evening 7.30pm onwards and casual play Sunday afternoon 2pm – 4pm

Fun times, doubles play for our members is going strong, another reason to join the club.

Beginners and rusty rackets course now available

To find out more, get in touch via email: stevesmith865@hotmail.com or call / text 📞 07790 561 817.

Cardio tennis (trial and join in as non-member)

Cardio tennis is basically a mini workout with a tennis racket in your hand and all done to music... No experience needed, it's fun while getting slightly fitter. All age groups invited. Again, please contact Steve directly.

Mixed and Men's teams results in the ESC Summer 2022 League

Due to the extremely high temperatures, we had to cancel most of our matches in August but looking forward to finally get play under way again with eight matches being scheduled in August and September.

Weekly Activities

Tuesday evening – 6.30pm cardio tennis
Tuesday evening – 7.30pm club night
Wednesday morning – 10am casual play
Thursday evening – 6.30pm group coaching (rusty racket)
Thursday evening – 7.30pm cardio tennis
Friday morning – 10am casual play
Sunday afternoon – 2pm casual play

HENHAM, ELSENHAM & UGLEY
CHURCHES INVITE YOU TO

EVENTS TO INTRODUCE AND WELCOME OUR NEW VICAR, LOUIS WILSON & FAMILY

JOIN US FOR AN EVENT IN EACH OF OUR THREE
VILLAGES:

SUNDAY 11TH SEPTEMBER:
GARDEN PARTY/BBQ AT ST MARY'S ELSENHAM
2.00 PM - 5.00PM (FREE)

**SATURDAY 1ST OCTOBER: SUPPER & BARN DANCE AT
HENHAM VILLAGE HALL - 6.30 - 10PM (TICKETS £5.00)**

**SATURDAY 15TH OCTOBER: QUIZ AT UGLEY VILLAGE HALL
7.00PM (PLEASE BOOK IN YOUR TEAM)**

For more information and to book tickets for the barn dance
and quiz, contact office@heuchurch.co.uk.
You may also contact us at 01279 814285

Continued from page 24

Louis plans to start his service in the Benefice with a joint service on Sunday, the 18th of September, at Elsenham Village Hall. Further events that are planned are: a Garden Party/BBQ at St. Mary's Elsenham, at 2.00-5.00 p.m. on Sunday, the 11th September; A Supper and Barn Dance at Henham Village Hall at 6.30-10 p.m. on Saturday, the 1st of October, and a Quiz Night at 7.00 p.m. on Saturday, the 15th of October, at Ugley Village Hall. There is an advertisement for these events in this issue of your magazine.

All of these events will be a great opportunity for everybody to get a chance to meet Louis and his family and for them to meet all of us. Your attendance will be most welcome, regardless of your faith. I stress again that all are welcome.

The Church of England Guidelines for Vicars states that part of the Vicar's role is that:

"They are to bless the people in God's name. They are to resist evil, support the weak, defend the poor, and intercede for all in need. They are to minister to the sick and prepare the dying for their death."

So, for all parishioners, the Vicar fulfils the important role of offering Pastoral Care, as well as affording the provision of services, baptisms, weddings and funerals. As much as the task of encouragement that I have set for you is vital, and requires some effort, the tasks set before the Vicar are all encompassing and as much as they can be, rewarding. We must remember how difficult and demanding the role of being a Vicar is.

The second definition of encouragement, above, helps us

to understand the role that Louis has in encouraging us. For the most important role of a Vicar is to: "*stimulate the development of an activity, state or belief*", in this case, that of faith. The C. of E. guidelines state:

"They are to tell the story of God's love ... they are to unfold the Scriptures, to preach the Word in season and out of season, and to Declare the mighty acts of God. They are to baptize new disciples in the name of the Father, and of the Son, and of the Holy Spirit, and to walk with them in the way of Christ, nurturing them in the faith ... They are to preside at the Lord's table and lead his people in worship, offering with them a spiritual sacrifice of praise and thanksgiving."

This task of encouraging us and leading us to Christ is surely one that is difficult in these times of indifference towards that Church.

However, it remains the case that no greater encouragement can be felt by a Vicar than that of seeing a parishioner being brought to the faith. So, let us listen to Louis, and let our hearts and minds be open to his mission here. Let us, in the words of St. Paul: "encourage one another and build each other up."

I hope that you are all encouraged by this message and are prepared to undertake, in however small a way, the task of encouragement. I hope that we can pray for Louis and his family, and I am very hopeful that Louis, and all of his family, will be an inspiring addition to our villages as they undertake God's purpose here.

Alexander Way, Church Warden

COOKERY CORNER

By Sue Johnson ☎ 812704



The chorizo and paprika give a lovely smoky flavour to this delicious stew. All cooked in a surprisingly short time, and no need to use the oven!

PORK, PEPPER AND CHORIZO HOTPOT (serves 6)

- 1lb 2oz (500g) pork tenderloin, sliced into thin strips
- 1 tablespoon honey
- 2 tablespoons olive oil
- 5oz (150g) chorizo, chopped
- 1 large onion, chopped
- 1 red and 1 yellow pepper, both deseeded and chopped
- 2 garlic cloves, crushed
- 2 teaspoons paprika
- 2 tablespoons plain flour
- 2 tablespoons of tomato puree
- Pinch of saffron
- 1 x 400g tin chopped tomatoes
- ½ pint (300ml) chicken stock
- 2 bay leaves
- 2 tablespoons chopped parsley

Put the pork strips in a bowl. Drizzle the honey over the top. Turn to coat and season with salt and black pepper.

Heat the oil in a deep frying pan or flameproof casserole over a high heat. Add the pork and fry quickly until browned. Remove from the pan with a slotted spoon and set aside.

If needed, add a little more oil to the pan. Fry the chorizo pieces for 5 minutes until crisp. Add the chopped onion, peppers and crushed garlic and fry for a few more minutes. Sprinkle in the paprika and flour. Stir in the tomato puree and saffron. Stir in the chopped tomatoes and stock. Bring to the boil, stirring all the time. Add the bay leaves. Cover with a lid, reduce the heat and simmer for about 20 minutes.

Return the pork to the pan and simmer for a further 5 minutes.

Remove the bay leaves and sprinkle with chopped parsley to serve.

CHEF'S RECOMMENDATIONS: Serve with freshly cooked rice, pasta, mashed potato, crusty bread or simply on its own. Can be made up to 24 hours ahead,

ELSENHAM FLOWER SHOW SOCIETY (2022)

A very big 'Thank You' to everyone who took part in, and attended the Village Flower Show. Below is the list of all of the trophy winners.

Individual Classes

1.	Boughton Trophy	Barbara Pether
2.	Walker Cup	David Lucas
8.	John Claydon Memorial Cup	Steve Hardy
9.	EFSS Sweet Pea Cup	<i>No winner this year</i>
16.	Claydon Bowl	Alex Lucas
17.	St. Mary's Church Shield	Gloria Eatson
18.	Elsenham Old Folks Club Rose Bowl	Alex Lucas
19.	Johnson Cup	Gloria Eatson
20.	Newland Salver	Steve Hardy
25.	Beeston Cup	Leia Nottage
26.	EFSS Top Vase	Thuy Nottage
49.	EFSS Heaviest Marrow Cup	Richard Haggerwood
50.	EFSS Heaviest Onion Cup	<i>No winner this year</i>
58.	EFSS Top Tray	David Lucas
67.	George Sandford Cup	Tony Eatson
68.	Freda Powell Trophy	Alex Lucas
76.	Budden Trophy	Julia Hardy
78.	Hackett Shield	Julia Hardy
80.	Gladys Hudson Memorial Cup	Christine Samuel
82.	Shirley Scutt Shield	Betty Francis
85.	Hilda Collett Memorial Cup	Alex Lucas

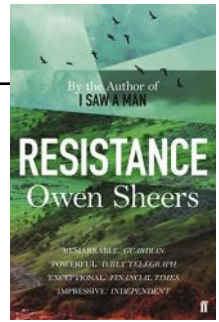
Section Trophies

Oldacre Landscaping Cup	Alex Lucas
Chapel End Nursery Cup	Alex Lucas
George Powell Trophy	David Lucas
Moat Farm Perpetual Cup	David Lucas
Options Trophy	Alex Lucas
EFSS Produce Cup	Barbara Pether
Elsenham WI Centenary Trophy	Gloria Eatson
Super Cook Cup	Barbara Pether
Jubilee Cup	Julia Hardy
Woolvin Cup	Anne White
EFSS Photographic Cup	Gloria Eatson
Margaret Hockley Memorial Cup	Leia Nottage
Richards Salver	Joanne Lashey
Elsenham Parish Shield (overall show winner)	Alex Lucas

Children's Classes

25.	Flowers – A Fan of Leaves	Leia Nottage
57.	Vegetables – A Potato Head	Abigail Dally
75.	Baking – 3 Butterfly Cakes	Emily Jacobs
86.	Handicraft – A Pair of Flip-Flops made of Recycled Material	Dorothy Boxall-Hunt
91.	Photography – 'Farm Animals'	Leia Nottage

'1944. After the fall of Russia and the failed D-Day landings, half of Britain is occupied . . . Young farmer's wife Sarah Lewis wakes to find her husband has disappeared, along with all of the men from her remote Welsh village. A German patrol arrives in the valley, the purpose of their mission a mystery. Sarah begins a faltering acquaintance with the patrol's commanding officer, Albrecht, and it is to her that he reveals the purpose of his mission - to claim an extraordinary medieval art treasure that lies hidden in the valley. But as the pressure of the war beyond presses in on this isolated community, this fragile state of harmony is increasingly threatened....' So says the blurb on the back of the book.



'Mixing lush descriptions of the landscape with a very human story of war ... this is a sparkling debut.' *The Daily Mail*

This was the choice of the book group this month. This book is set in a Welsh valley exploring an alternative history of Germany winning World War 2 and invading the UK. In the isolated valley, the five farmers' wives assume that their menfolk have gone to join the Resistance. The women are completely distraught and upset by this action as their men left without any warning. However, they realise they have to keep the farms going. They bank on their hopes that they can keep going and the war will pass them by as they can't imagine the enemy would occupy their small, isolated valley. However, a small hand-picked patrol arrives on a secret mission, led by English speaking, Oxford educated Albrecht.

Due to a freak snow storm, the Germans are snowed in together with the farmers' wives. Albrecht realises that the absent men would have joined the resistance and he would be expected to shoot the women. He is, however, tired of the fighting and doesn't want his young patrol to be put back into active duty. As no-one knows they are there, he takes no action and instead he and his men help to manage the farms. The women reluctantly accept their help but know they need it as they wouldn't have managed the hard and heavy work alone.

Their isolation means both the women and the Germans are cut off from news of the wider occupation and so settle into rural life and tentative relationships develop.

The interaction of the women and the Germans is well-described, the prose descriptive, whether about the emotions of the two lead characters - Sarah Lewis and Albrecht - or the scenery, seasons and working life. The story has quite a slow pace. Owen Sheers was motivated to write the story based on several true incidents that came to his attention.

Editorial Information

Articles

The **last day** for editors to receive articles, advertising and letters, which must contain the author's name and address (which may be withheld), is the 8th of each month.

Articles should ideally consist of a half page of A5 or a full page of A5. Articles over these sizes or letters containing more than 500 words may be edited depending on space.

Copy submitted after the 8th may not be accepted but will, if deemed appropriate, be held over to the next month. We are happy to receive hand written articles which ideally should reach us earlier than the 8th to allow for scanning etc.

Dates for the Diary must include date, event, venue and time.

Please submit all articles, adverts, letters and queries to the editorial team at:
elsenhamnews@hotmail.co.uk

General Notes

Whilst every effort is made to ensure that information is correct, the editorial team cannot be held responsible for any inconvenience caused through errors or omissions.

The views expressed within this magazine are not necessarily the views of the editorial team or Elsenham Community Association (ECA).

The editors and the ECA can accept no responsibility for the goods or services advertised in the magazine. Advertisements are included in good faith. The editors reserve the right to allow replies to letters/articles to be made in the same edition when appropriate.

The editors' decision is final.

Wanted/For Sale items: individuals may submit short details of items wanted or for sale etc at no charge. These will be included in the next available issue of the magazine subject to space and acceptance by the editors.

Subscriptions

Elsenham News is available by email (on a pdf) at no charge, or through the post at a cost of £13 per annum. Contact elsenhamnews@hotmail.co.uk

Advertising

The costs are as follows:

	Single Insertion	Annual Cost (11 issues)
Half Page	£20.00	£190.00
Quarter Page	£10.00	£100.00
Inside Page	£50.00	n/a
Back Page	£75.00	n/a

Village organisations attract reduced rates, £5 for ¼ page. Half and full-page adverts attract full rates.

To place an advertisement:

For any queries, contact Nathalie. Please send your advert as Word or Publisher via email to elsenhamnews@hotmail.co.uk

Advertising Editor: Nathalie Kosorin

Business Advertising

Cheques should be made payable to **"Elsenham Community Association"**.

Editorial Team:
Gary Williams
Emma Bailey
Patricia Davis
Anne White
Nyaradzo Chabata

Previous issues of Elsenham News are available on the ECA Website

www.ElsenhamCommunityAssociation.org.uk

UPCOMING EVENTS

MacMillan Cancer Support Coffee Morning - Friday 30 September
Bowls & Social Club Quiz - Saturday 1 October

VILLAGE CONTACTS

Airport Roadside Parking		0800 731 2385
Beavers	1sthenhamandelsenham@gmail.com	
Bowls Club	Jean Platt	816151
Brownies	elsenhambrownies@outlook.com	
Church Office (Old Franks, High St, Elsenham)	Anna Hicks	814285
County Councillor (Stansted)	Ray Gooding	813103
Cricket Club	David Brown	831011
Cub Scouts	1sthenhamandelsenham@gmail.com	
ECA (Chairman)	Allan Hathaway	813385
ECA (Secretary)	Moyra Jackson	647351
ECA Website	www.ElsenhamCommunityAssociation.org.uk	
Elsenham Surgery	www.elsenhamsurgery.nhs.uk	814730
Elsenham C of E Primary School	Linda Todd Headteacher	813198
Elsenham Church PCC Secretary	David Hill	812397
Elsenham Rights of Way website	www.e-voice.org.uk/erowos/	
Friends of Elsenham School (FOES)	Gemma Mills	07745 036066
Guides elsenhamguides@gmail.com	Gemma Schafer	07792 572423
Henham & District Garden Society	Moyra Jackson	647351
History Society	Mike Rea evhs12@hotmail.co.uk	813634
Member of Parliament	Kemi Badenoch	0207 219 5214
Memorial Hall Bookings	Cheryl Rae	817834
Neighbourhood Watch Co-ordinator	Francis Lambert	07771 728332
	francislambertnhw@btinternet.com	
Parish Clerk - Louise Johnson	louise.epc@gmail.com	07456 791727
Elsenham Parish Council Website	www.essexinfo.net/elsenhamparishcouncil	
Police		101
Post Office		812175
Rainbows	elsenhampirnbows@outlook.com	
Scouts	1sthenhamandelsenham@gmail.com	
St Mary's Fabric Fund	Elizabeth Barker	813543
Tennis Club	Petra Studholme	814667
Tots & Toddlers	Trudi Marsh	899864
Uttlesford District Councillors (for Elsenham & Henham)	Petrina Lees	814406
Village Hall Bookings	Garry LeCount	07836 346717
Village Hall email address	Annie Gleeson	07809 490731
Womens Institute Secretary	elsenhampvillagehall@gmail.com	647729
WI website	Gill Hathaway	813385
Youth Football Club (Chairman)	www.elsenhamwi.co.uk	
	Paul Jarvis	07786 933280

If you would like your village organisation contact to appear regularly in the magazine, please contact one of the editors, see opposite for details.



Welcome to our
Farm Shop & Tearoom
The Barn, Pledgdon Hall, Henham,
Bishops Stortford, CM22 6BJ

If you would like to order from us or book a table, please call us on 01279 248 201 or email orders@cliffords.info

Open Monday to Saturday 9.00 to 17.00 (CLOSED TUESDAYS), Sundays 9.00 to 16.00, Pig Sty Tearoom open 9.00 to 15.30



About our Farm Shop

We stock a vast array of produce.

Fresh fruit and vegetables sourced from New Spitalfields Market, local meats and poultry from Priors Hall, bread and cakes from The Brown Bread Co. & beers and spirits from local microbreweries & distilleries. Foods and drinks from around the world & a large gluten free range and many vegan items.



Open Monday to Saturday 9.00 to 17.00 (CLOSED TUESDAYS), Sundays 9.00 to 16.00, Pig Sty Tearoom open 9.00 to 15.30

Pig Sty Tearoom

All Day Breakfasts & Lunch with both Full Size "Pig Sty" meals as well as smaller "Piglet" size servings and for the youngest among us a "Baby Piglet" menu.

Sunday Lunches with 2 meat choices and a veggie choice every week, including homemade desserts.

Our Afternoon and Cream Teas are fast becoming legendary, freshly made Sandwiches, Scones & both Home Made Cakes and Belguite Patisserie.



If you would like to order from us or book a table, please call us on 01279 248 201 or email orders@cliffords.info