

Elsenham News



elsenhamsnews@hotmail.co.uk

November 2023
75p where sold

November 2023

Elsenham Village Regular Monthly or Quarterly Activities

Parish Council 1st **Monday** of month 7.45pm (excl. Bank Holidays) Memorial Hall
 Natter Night 2nd **Monday** of month 7.30pm The Crown
 Elsenham EAGLES 4th **Monday** of month 7.30 - 9pm The Crown
 Henham & District Garden Society 1st **Tuesday** of month 2.30 - 4pm Memorial Hall
 Community Choir 1st & 3rd **Tuesday** of the month 7- 8.30pm Village Hall
 Life Drawing 2nd and 4th **Tuesday** of month 7.30 - 9.30pm Village Hall
 Village History Society 2nd **Wednesday** of month quarterly 7.45pm Memorial Hall
 Women's Institute 3rd **Thursday** of month 7.45pm Memorial Hall
 Church Lunch Club 2nd & 4th **Friday** of month 12.30pm Memorial Hall
 Elsenham Farmers Market usually last **Saturday** of month 12 - 2pm Village Hall

November 2023 diary

Sat 4 & 18	Bingo	Bowls & Social Club 7 for 7.30pm
Mon 6	Parish Council Meeting	Memorial Hall 7.45pm
Tues 7	Henham & District Garden Soc	AGM Memorial Hall 2.30pm
Tues 7 & 21	Elsenham Community Choir	Village Hall 7pm
Weds 8	History Society Meeting	Memorial Hall 7.45 for 8pm
Thurs 9,16,23&30	Pop-up Cakery & Barista Bar	Memorial Hall 8.45am-2pm
Thurs 9	District Councillors' Surgery	Orwell House, Station Road 6pm
Thurs 9	ECA general meeting	Memorial Hall 7.45pm
Fri 10 & 24	Church Lunch Club	Memorial Hall 12.30pm
Sat 11	Act of Remembrance	Memorial Garden 10.45am
Mon 13	Natter Night	The Crown 7.30pm
Tues 14 & 28	Life Drawing	Village Hall 7.30pm
Thurs 16	WI	Memorial Hall 7.45pm
Sat 25	Christmas Market	Golf World Stansted 2-6pm
Mon 27	Elsenham Eagles	The Crown 7.30pm
Thurs 30	Bowls & Social Club AGM	Bowls & Social Club 8pm
Sat 2 Dec	Elsenham Farmers Market	Village Hall 4-6pm



Mobile Library
Every third Thursday stopping at Glebe End

11.50 am to 12.20 pm

2 and 23 November

Elsenham Village Regular Weekly Activities

Day	Time	Activity	Location
Monday	9.30-10.30am	Zumba	Memorial Hall
	9.30-11am	Dnky Dragons	Henham Village Hall (term-time)
	10.30am	Health walk	Start at De Mandeville Green
	4-4.30pm	Rascals (3-4yrs)	Memorial Hall (term time)
	4.30-5.30pm	Rascals (5-7yrs)	Memorial Hall (term time)
	5.30-7pm	Rascals (8-12yrs)	Memorial Hall (term time)
	7-7.45pm	Boxercise	Elsenham Village Hall
	7.30-8.30pm	Shape to the beat	Memorial Hall (not 1st Monday)
Tuesday	9.30-10.30am	Touchpoint Food Share	Bowls & Social Club
	9.30-11.30am	Village Café Coffee	Memorial Hall (not 5th Tuesday)
	4.45-5.45pm	Rainbows	Memorial Hall (term-time)
	5.15-6.15pm	Beavers Group 2	Ugley Village Hall
	6.30-7.45pm	Cubs	Ugley Village Hall
	6-7.30pm	Brownies	Memorial Hall (term-time)
	7.30-10.30pm	Tennis Club night	Tennis Courts
	8pm	Fitness Yoga/Pilates	Memorial Hall
Wednesday	9.45-11.30am	Tots & Toddlers	Memorial Hall (term-time)
	5.30-7.30pm	Slimming World	Memorial Hall
	5.45-6.45pm	Beavers	Ugley Village Hall
	7-8.45pm	Scouts	Ugley Village Hall
	7.30pm	Aerobics	Elsenham Village Hall
Thursday	8.45am-2pm	Cakery & Barista	Memorial Hall
	6-7.15pm	Cubs	Ugley Village Hall
	6.45-7.45pm	Jump Fit	Elsenham Village Hall
Friday	10-11am	Little Fishes	Memorial Hall (term-time)
Saturday	8.15am-1pm	Tart au Citroen	Playing Field
	9am-12pm	Junior Football	Playing Field
	8.45-9.30am	Little Kickers Mighty	Village Hall (term time)
	9.35-10.20am	Little Kickers Junior	Village Hall (term time)

SAVE THE DATE!



ELSENHAM CHRISTMAS MARKET

25th November 2023
at Golf World Stansted 2pm -6pm

Sign up via the

Elsenham Christmas Market Facebook page or
Elsenham Community Association website or at
www.waytoomanybricks.co.uk

Raising money for the Elsenham Community

Golf World Stansted, Hall Road, Elsenham Essex CM22 6FL
01279 812 865 | accounts@golfworldstansted.co.uk

Indoor seating
Play cafe & toys for kids

CAKERY & BARISTA BAR @ Elsenham Memorial Hall



Ethically sourced and freshly ground barista
coffee, delicious cakes, savoury bakes and more...

8:45am – 2:00pm every Thursday*

*Please follow us on social media for updates; holiday dates and unavoidable cancellations
will be posted online. Keep an eye open for our advertising boards on Station Road and
Ambrose Corner; if they are out, we are serving!

 07766 741 342

 [Facebook.com/cocofleur2013](https://www.facebook.com/cocofleur2013)

 enquiries@coco-fleur.co.uk

 [Instagram.com/cocofleur_cakes](https://www.instagram.com/cocofleur_cakes)

 www.coco-fleur.co.uk



THE NEWS REPORT

From The Editors



We are fast approaching the festive season and inside you will find details on various activities and markets that will, hopefully, make the occasion even more enjoyable for you.

There is the Elsenham Christmas Market (pg4), Henham Christmas Market (pg6), Elsenham Farmers Market (pg22) and Christmas Wreath making (pg48). If you prefer a true festive tradition, why not join the Christmas choir (pg47). We hope you get the chance to participate in one or more.

To give the village that true festive feel, why not help Anne and the team at Options get that Christmas tree put up. Can you spare a half hour on November 26? Please see pg13. Alternatively, why not make a donation this year to make a difference. See the Aid for Romania appeal (pg29).

Elsewhere inside, we continue to welcome new advertisers and sincerely hope this publication proves successful for them. If you wish to advertise in the December issue, please ensure your ad is with us before December 8. The email address and advertising rates can be found on the inside back page.

Finally, a word of caution. With an increasing amount of local roadworks, building sites, poor weather and it becoming dark earlier, please take care when driving, riding a bicycle or out walking. Most of our roads are narrow and not designed for the type and speed of travel we see currently. Be aware, be alert and above all, be safe.

Environmental tip for the month:

Leave the car at home and use the bus or train.

Regular features

Parish Council	7	Stansted Fire Station	31
District Councillors	9	Natural Outlook	33
Development Developments	11	Ray's Reflections	35
Daisy May's Farm	13	St. Mary's Fabric Fund	37
Neighbourhood Watch	15	U3A	39
Community Speed Watch	17	100 Parishes	41
Elsenham Eagles	19	Bowls Club	43
History Society	21	Cricket Club	43
Elsenham WI	23	Tennis Club	45
Scouts	25	Cookery Corner	47
Church Calendar	27	Book review	49



Making Steps 4 Mason
@fomm.society

HENHAM *Christmas* MARKET

**FRIDAY 10th
NOVEMBER**

1pm to 8pm

Village Hall - CM22 6AT

OSCA Hall - CM22 6AS

*£2 entry fee will get you into both halls.
Children free.*

*Please bring cash for refreshments, home made cakes
tombola and a raffle.*

Guest appearance by the Elsenham Community Choir and
an appearance by Woodwind Of Stortford

*All proceeds go to Meningitis Research Foundation
& Friends of Mason Montague Society.*

*Thank you to Intercounty,
Vision Fitness, Prontaprint and
Optoelectronics for your support.*

ELSENHAM PARISH COUNCIL NOVEMBER 2023

By Louise Johnson, Clerk. ✉ louise.epc@gmail.com ☎ 07456 791727



The Chair, Cllr. Mott, welcomed Anna Mowbray onto Elsenham Parish Council.

The Parish Council have submitted objections to the Rush Lane detailed application of 40 dwellings. This development already has planning permission so there was no point in objecting to the development itself. The Parish Council objected to the inadequate visitor parking and the affordable housing being all clustered together. The Council raised concerns that Wells Cottages have no foundations and there is a duty to preserve listed buildings. There is also no mention of the natural spring, which causes a lot of flooding. The children's play area is not acceptable, there is not even one swing.

The Vistry development in Hall Road has now started. Vistry have assured the Parish Council that the public right of way will remain open during the period of the construction.

The draft Local Plan 2021 – 2041 has now been published. Regulation 18 consultation will be held from 3 November – 15 December 2023. There are no further developments in the Local Plan for Elsenham, but this may be because Elsenham has no more green spaces left to build on.

The District Council are holding an airport parking meeting led by Cllr Neil Hargreaves, Deputy Leader of Uttlesford District Council, for key partners to discuss the off-airport parking problems. The Parish Council are sending two Councillors to voice the concerns in Elsenham.

The allotments on Smith Road have been broken into. A lot of sheds had their doors removed; some items were taken. This has been reported to the police.

Support Local Bus Services 2024-2028 consultation which was launched in July is scheduled to conclude on 5 October 2023. The 7 and 7a buses are at risk. In two years the contract will be reviewed and this may result in different routes, different times or Elsenham could lose their bus services completely. This is despite developers in Elsenham contributing over £2.5 million to help improve the local bus service.

Some new play equipment is to be installed in the Isabel Drive play area. Hopefully, it will all be ready for the children to enjoy before Christmas.

The next Parish Council meeting will be Monday November 6, 7.45pm in the Memorial Hall. All members of the public are welcome.

GARDEN HINT *By Sue Johnson*

Protect winter salads and hardy broad beans with cloches or fleece.



CROFT TURKEYS



TRADITIONAL FARM FRESH BRONZE TURKEYS
 FED WITH HOME GROWN CORN
 TO ORDER YOUR OVEN READY TURKEY, PLEASE CONTACT:
CHRIS MIZEN
 THAXTED (01371) 831033
 MOBILE 07702048457
 LIVES FARM, CUTLERS GREEN, THAXTED, ESSEX

ARCHITECTURAL DESIGNERS

PLANNING AGENTS

STRUCTURAL ENGINEERS

YOUR COMPLETE DESIGN
 CONSULTANCY SERVICE
 CONTACT US TODAY



RESIDENTIAL SPECIALISTS

Phone: 07707 138283
 mail@robertblakedesigns.co.uk
 www.robertblakedesigns.co.uk




KIM'S GROOM ROOM

EST 2022




- 1-1 Professional Dog Groomer
- City & Guilds Level 3 Qualified
- Private Home Parlour Elsenham
- Fully Insured & First Aid Trained

Call or Text 07921 429257

DISTRICT COUNCILLORS' REPORT

✉ CLlrdonald@uttlesford.gov.uk

☎ 07941 880279

✉ CLlrlees@uttlesford.gov.uk

☎ 07713 074656



Where do we get our money from? Central government funding used to be the biggest single source of money for many councils, including Uttlesford. For the current financial year 2023/24 the total cost of providing council services is budgeted at £19,251,000. This is the nett cost after considering fees for services such as Planning, Licensing, and car park income.

Council Tax income for the year is forecast to be £6,694,000, representing 35% of the net cost of services. The remaining cost is funded through a mixture of business rates, government grants, commercial investments and reserves.

Increasing cost pressures, and real-terms reductions in government funding, have significantly increased the financial pressures on the council in recent years. This means that we need to ensure we remain efficient while continuing to provide the same high quality services residents expect. Please do complete the consultation to help us decide on the priorities for the budget for April 2024 to March 2025. www.uttlesford.gov.uk – budget consultation. If you don't want to respond online, paper copies of the questionnaire are available by calling 01799 510510. The council will accept responses via email, online or paper forms up to and including Sunday, November 5. We know this is a quick turn around, do please respond. It is important to have your say.

Only a small part of the Council Tax you pay goes to us. Uttlesford District Council currently keeps £171.61 a year of the average £2,044.67 paid in Council Tax by an Uttlesford household based on Band D property in 2023/24. The rest goes to: Essex County Council, Essex Police Fire and Crime Commissioner and Parish and Town Councils. We deliver several statutory services. These are services that we have to provide by law. Examples include:

Environmental Health and Licensing costs about £32.49 per household per year
Housing and Homelessness costs about £14.28 per household per year
Planning and Building Control costs about £107.51 per household per year
Refuse and recycling collection costs about £57.94 per household per year,
Revenues and Benefits costs about £49.80 per household per year
Community safety activities costs about £11.00 per household per year
Running Saffron Walden Museum costs about £11.02 per year
Climate change activities cost about £11.63 a year

A decision on whether the Local Plan will be out for Consultation will be debated on October 30th and if agreed the Consultation will start. It is very important that as many residents as possible respond to the Consultation, please be prepared. If agreed, a leaflet will be delivered to every household.

Our Surgery this month is Thursday November 9 at 6pm Orwell House, Station Road, Elsenham.



LOGS LOGS LOGS

- Well seasoned hard wood
- Transit load / bulk builder bag
- Cut to fire size

Call today ☎ 01279 718555
Or email ✉ dar13@mail.com

JACKS

GROUNDWORKS

DIGGER AND OPERATOR FOR HIRE

- Excavations • Driveways
- Foundations • Footings
- Drainage • Soakaways
- Septic Tanks

07940 231964
01279 755545

Mat Duxbury



PAINTING

Professional Interior and Exterior Painting Specialist

References available on request

20 Years' experience

Fully Insured

NVQ Qualified and Health and Safety Certified

Local, reliable and friendly service guaranteed

For a free estimate please contact Mat on ☎ 07810 250426 or
email ✉ mat@duxburypainting.co.uk

ELSENHAM



DEVELOPMENT DEVELOPMENTS

By Graham Mott ☎ 812516 ✉ motts@grahammott.plus.com



Uttlesford District Council has at long last made known the outline of its Local Plan for the period 2021-41. The headline news is that no new housing allocations are proposed for Elsenham, on the grounds that over a thousand new homes are already committed in the village. Elsenham, indeed, is little mentioned in the over 300 pages of the report, but there is one gem. We are told that the village 'is located immediately adjacent to a double-roundabout which can make accessibility by car challenging'. Whoever wrote this has certainly never been to Elsenham. If statements about other settlements are at similar levels of accuracy, we can confidently expect that the Plan will be torn to shreds and it will be start again time, again.

Everyone can have a say on the Plan during the 'Regulation 18' consultation, which will run from 3 November to 15 December. The intention is to submit the Plan to the Secretary of State by 2024. If it is later than June 2025, the Government's rules of the game change, and the whole caboodle would go back by a couple of years, or more. After submission, there is then a full examination by an Inspector before eventual adoption, which is scheduled for mid-2026. The Plan is of limited planning weight until then.

In the previous Plan, Uttlesford proposed three new 'garden communities' of substantial size. These have now been abandoned in favour of expansion, especially of the 'key settlements' of Saffron Walden, Great Dunmow and Stansted Mountfitchet, with allocations also to some 'local rural centres', Newport, Takeley and Thaxted (but not Elsenham), and the remainder going to 'larger villages', including Henham (112). Numbers can change after the consultation. Chicken-counting would be premature.

There will be no attempt to remedy shortcomings arising from developments before the Plan. Local inadequacies were taken up at a meeting with a director of Bloor Homes, called in order to report on the ongoing development of 350 homes and the detailed application for another 200. The developer was attacked for lack of provision, with the doctors' surgery and the state of the roads singled out for particular mention. The director could only fall back on the tired and predictable old mantra that if it's not in the S106, there's nothing they can do about it, and the S106 was negotiated before they came on the scene. The best that he could offer was a contribution to **Elsenham News** which could rightly be described as derisory.

Vistry, otherwise Bovis Homes, have started their development of 130 homes off Hall Road. I related a couple of months ago how they were proposing to divert the Public Right of Way from the central green corridor onto estate roads. After a high-pressure meeting at the Crown, they saw sense and agreed that the straight route was the obvious one. They have also committed to keeping the PRoW open during construction. A walk through from Hall Road to Fuller's End is recommended, if only to admire their shiny new Heras fencing.

Do-It-4U

Repair, Care & Maintenance For your Home and Garden

- ◆ Plumbing, Electrical & Carpentry Services
- ◆ Drain Blockages Cleared Telephone
01279 814411
- ◆ Gardens Tidied & Maintained Mobile
07774 877320
- ◆ Hedges & Topiary Trimmed & Shaped
- ◆ Fences Erected & Repaired

S. PERRY CHAPEL END NURSERY

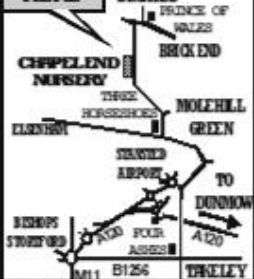
NEW STOCK: ROSES, SHRUBS, TREES, HEDGING
FRUIT TREES AND BUSHES
WINTER PANSIES, WALLFLOWERS, SPRING BULBS

WATER SOFTENER
SALT TABLETS 25kg
£14 EACH £62.50 for 5

Christmas Trees
available from
Late November

GODWINS
MULTIPURPOSE COMPOST
60 Litre Bag
£7.25 EACH 3 For £18.50

WE ARE
HERE



Mr FOTHERGILLS SEEDS
BUY 5 PACKETS GET
CHEAPEST PACKET FREE

OPEN 9am to 5 pm
MONDAY to SATURDAY
(CLOSED: SUNDAY)
MOLEHILL GREEN ROAD
BROXTON DUNMOW ESSEX CM6 2BW
01279 850771

www.chapelendnurserysperry.co.uk

BASKET & TUB PLANTS
VEGETABLE PLANTS
ALPINES
HERBACEOUS
HERBS
ROSES
SHRUBS
POND PLANTS
AQUATIC COMPOST
GODWINS COMPOST
WILD BIRD FOOD
SUNDRIES



Daisy May's Farm

Hall Road, Elsenham, CM22 6DN

Well, what a fantastic year this has been for us, and the best bit has been having all our lovely visitors come to see us on the farm!

We are starting to get very excited about Christmas and really hope you will be joining us for the festivities this year; there will be so much to do. As it is such a busy time for Mrs Claus, we are giving her the festive season off this year but fear not..... the **Santa Sleigh Train** will be in action driven by **Santa and his helpers**, so do not miss this! Make sure you keep an eye on our Facebook page, so you are up to date with all our plans and activities and don't miss all the fun!

Our animals are always so happy to see you and we still have some piglets that are so cute, but very cheeky! At the moment there are sheep, goats, ponies, all sorts of chickens, ducks, turkeys, pheasants, rabbits, guinea pigs and don't forget our rhea (similar to an ostrich). They all love to see our visitors! These events are a vital lifeline for us to raise enough funds to feed and look after our animals throughout the winter and we can only do this with your help and support.

We **always** need help in so many ways, particularly when there is **so** much to do. So if you have a little time to spare, **please** get in touch, we would **love** to hear from you. Please contact ☎ 07747 787973 or take a look at our website 🌐 www.daisymaysfarm.org to find out more. Thank you so much.

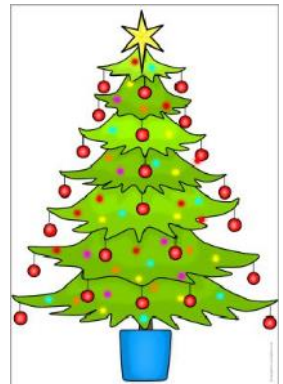
HELP NEEDED! – The Christmas Tree Needs You!

As in previous years, Ann from Options Hair Design will be providing and decorating the large Christmas tree which is displayed on the green by the shops.

We need help from one (or more!) electricians to help us with running the cables from the top of the building to the tree. We also need some extra muscle to help getting the tree in place. We will be putting the tree up on November 26, so please call Ann on 07957 166436 if you can help.

Without help the tree will not be going up this year.

We are of course grateful to John Hill and his son who have been helping us with this for the last 30 years.



Binwash

We clean
your
wheelie
bins!

Commercial & Domestic



Low cost & highly efficient service!

Professional machinery

4 weekly schedule or one-off clean

High pressure wash and dried

Disinfected and deodorised

www.binwash-uk.com

01799 529899

enquiries@binwash-uk.com

HANDY MAN SERVICES

For all decorating and staining, ceilings, walls can be sorted out. All kitchens install. All old kitchens converted. Tiling. Garage converted to dining room. Bedroom office. Small kitchen. uPVC doors install to side wall. Small flooring install to requirements. And much much more!

Call Dennis Free Quote
07946 231302



Street Dance • Acting • Pop Singing

FREE
Trial
Offer

New classes in
Elsenham



For more details:

Tel: 01376 331543

Email: admin@rascals-uk.com

Web: www.rascals-uk.com

Fun classes
inspiring Confidence,
Character & Creativity
for children aged 3-12yrs

NEIGHBOURHOOD WATCH

By Frances Lambert ✉ franceslambertnhw@btinternet.com



I was speaking to the police and the subject of reporting a crime came up. They stressed the importance of reporting all crime to them, as without these figures Elsenham shows as crime free. We all know of something that has happened in the village, a burglary, drug dealing, damage to a car, or even pots and statues taken from a garden. However small or large the incident, the police would like to know about it so that it can go on record as a statistic in Elsenham. Some might think "Well nothing will be done even if we report it", but more will be done if we report all the crimes carried out against us. If it is minor call 101 and report what has happened with as much detail as possible. You will be given an incident number with the date you reported it. You will need this incident number if you are making a claim on your insurance. If it is an emergency don't delay but call 999 immediately. I was amazed when I dialled 999 and reported an incident because the police stayed on the line with me until the police car arrived only five minutes later. It was during the day, so I don't think the police siren woke anyone up, but it was good to hear the siren and know that the police were coming to help me. The police always stress that they would rather you called them if there is a problem. Dial 101 and report minor crimes, or 999 in an emergency.

If you have any information regarding incidents contact Essex Police on ☎ 101 or Crimestoppers anonymously on ☎ 0800 555 111.

THE AUBREY BUXTON NATURE RESERVE

By John Welham, Warden

✉ communications@essexwt.org.uk 🌐 www.essexwt.org.uk

With Autumn now upon us the reserve is changing colour from greens to browns and the trees and shrubs are providing a feast of nuts and berries for the mice, squirrels and birds to feed on. Beneath the beech and hazel trees in particular there is a very good crop of nuts this year. Look closely and you can see the different ways in which mice and squirrels open a hazelnut shell to get at the edible part inside. If you find a hazelnut that has not been opened, open the shell yourself and chances are that the nut inside has not formed. The squirrels and mice can tell this before opening the shell and therefore save themselves the effort.

Now is also a good time to see spiders. The spider webs are more obvious as they glisten in the morning dew and make an excellent subject for photography. The reserve supports a wide range of spiders, something that would be worthy of study in its own right. One species that caught my eye recently was the Wasp Spider. A spectacular spider so named for the yellow and black markings on the female.

The car park has some significant potholes and needs attention so work will be carried out this month to repair it. This may mean closing the car park for a short period, so apologies for any inconvenience.

MASKALLS TREE SURGERY

Small family business

Big expertise in trees

Call George

M: 07982 601 570 | T: 01279 819 127

email: george@maskalls.co.uk

www.maskalls.co.uk



**All types of tree care & hedge cutting undertaken.
Call for a free estimate.**



D BONNEY & SONS MANUDEN MOTOR VEHICLE ENGINEERS

MOT TESTING

**ALL MAKES OF VEHICLES SERVICED INCLUDING FOUR WHEEL
DRIVES**

TRW BRAKE CENTRE

DIAGNOSTIC AND FAULT FINDING

WELDING AND CHASSIS REPAIRS

SELECTION OF USED CARS

CALOR GAS STOCKIST

WE HELP YOU THE MOTORIST WITH A CHEAPER LABOUR RATE

GUARANTEED WORKMANSHIP

FREE COLLECTION AND DELIVERY IN LOCAL AREA

PLEASE RING: MALC, NEIL OR CRAIG

 01279 813315 OR  01279 815946

ELSENHAM COMMUNITY SPEED WATCH

By Frances Lambert ✉ flambert@btinternet.com



If you read my last report, you may remember I told you about the speed of the drivers on the Henham Road, at home time at 16:00 from the building site.

Someone had a word with the workmen, and on our next time out there the speeds had greatly reduced, but the drivers were not happy at being asked to keep to the village speed limit of 30mph, and if looks could have killed us we would not have survived, as every driver who came past glared at us.

Their lower speeds also gave them more time to shout abuse at us, and use their hands to gesture what they thought of us, but we ignored all of this, as they were mostly keeping to the 30mph Elsenham limit.

Due to the high speeds we have been reporting we had the Police from Boreham out with us and several cars were pulled over for speeding. They are hoping to make this a regular occurrence but the times, days, and places may differ each time.

From October 19 the speed limit changed on the Henham Road. Going out of the village towards Henham, it is now 30mph until after the Bloor Site. It is now 30mph before you get to the Bloor site if you are coming in from the Henham end of the village.

From The Parish Registers

Funeral:

A graveside service on 9th October 2023 at Elsenham Cemetery, Peter Fitch, aged 88 years, formerly of Park Road, Elsenham.

Burial of Ashes:

On Thursday 12th October 2023 in Henham Churchyard, Eleanor and William King.

Church Contact Telephone Numbers, E-Mail and Web-Site Addresses

Vicar	01279 850480 louis.wilson@heuchurch.co.uk	Rev. Louis Wilson
Church Office	01279 814285	Anna Hicks
Church e-mail	office@heuchurch.co.uk	
Church web-site	www.heuchurch.co.uk	

Enquiries about thanksgivings, baptisms, weddings and funerals should be made in the first instance to Anna Hicks at the Church Office 01279 814285.



DECORATING SERVICES ALL ASPECTS OF DIY

NO JOB TOO SMALL

For a friendly reliable service
Just Ask.....

GARY KING

Home : 01279 850001

Mobile : 07951 452602

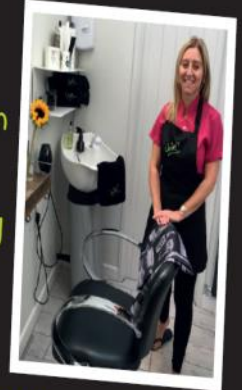
g.king962@btinternet.com

★ ★ ★
Jaime *gents hairstylist*
@ Rickling Green

★ Appointments from
7am Mon-Sat

★ FREE easy parking

★ Fully qualified
& insured



Call: 01799 542424

Text: 07791 058406

City & Guilds
Qualified

E. N.C. Electrical Limited

Industrial Agricultural Domestic

Electrical Installations

Fire Alarms/Emergency Lighting

Fault Finding

Portable Appliance Testing

Fixed Wiring Test & Inspection

Over 25 Years Experience in the
Electrical Industry

Contact: Ian Arran

Tel. 01279 647042
Mobile 07776 252994



Email: encelectrical@btinternet.com

44 Alsa Gardens Elsenham

Bishop's Stortford Herts, CM22 6HB



ALL
ITEMS
FREE!

EVERY TUESDAY IN ELSENHAM

WHAT IS THE TOUCHPOINT COMMUNITY FOOD SHARE?

Our volunteers collect food donated by local supermarkets and retailers that would otherwise go to waste, and distribute it free to the community

The Community Food Share is all about reducing food waste and is for everyone. We have fruit, vegetables, meat, baked items and more... and everything is absolutely FREE!

Where? Elsenham Bowls Club (off Leigh Drive)
When? Every Tuesday, 9.30am-10.30am

The produce has a short shelf life, so please only take what you will be able to use in the next few days.

If you would like to get involved and join our team of volunteers, please call 07572 114882 or email info@thetouchpoint.org

☎ 07572 114882
✉ info@thetouchpoint.org
🌐 www.thetouchpoint.org



ELSENHAM EAGLES

Elsenham Action Group for Local Environmental Sustainability

✉ elsenhams.action@btinternet.com



We now have further information about recycling of printer ink cartridges and spectacles.

Printer ink cartridges:

You can recycle printer ink cartridges at www.recycle4charity.co.uk Recycle4Charity is a free and accessible used ink cartridge programme that helps its thousands of members raise funds for charity and not-for-profit organisations. The website says "Raise funds for your charity, school and not for profit with your empty ink cartridges. Reusing ink cartridges stops them from going to landfill or from being incinerated." You can select your charity on the website. I have just ordered a recycling box and named the charity as Elsenham Primary School. It needs to be filled with at least 15 ink cartridges, so I plan to get together with friends.

Spectacles

You might not know that you can recycle used spectacles with Carol Wylde. She has currently sent off over three and a half thousand pairs. Wrapped spectacles can be left on her doorstep at 29 DeMandeville Road.

We have three groups within our organisation:

Environmental

Household Energy Reduction

Recycling

At our last meeting we appointed coordinators for the Environmental and the Household Energy Reduction groups. So, if you have concerns about any aspect of the environment, or about reducing your household energy bills, please contact us at the email address above and your email can be forwarded to the appropriate person. Also at our last meeting we changed our regular meeting date. We will now meet on the fourth Monday of the month, 7 for 7.30 pm – 9pm in the dining room of The Crown. All are welcome, even if you're just curious.

To everyone who supported our village Macmillan Coffee Morning, **thank you so much**. It was lovely to see so many of you and even though the weather wasn't fantastic, it didn't stop us having a super morning.



We had a brilliant team that pulled this whole event together – thank you to you **ALL**; you know who you are. Of course, not forgetting the Bowls Club that kindly allow us to hold our event in their super club house each year! We must also thank everyone that made a scrummy cake for us, donated a super raffle prize, or gave us a generous financial donation and it is thanks to **everyone** involved that we **raised over £1,900** this year..... incredible for two hours! This is a MASSIVE amount of money and really will help change the lives of those affected by cancer, so give yourself a large pat on the back!





The Hair Loss Clinic
North Hall Road, Ugley
07957 166436
www.hairlosslaserclinic.co.uk

The Hair Loss Clinic is a company set up to provide information, advice, support and above all solutions for people experiencing hair loss. Not only do we provide realistic and workable solutions to those suffering from hair loss but we are also specialists in after and on-going care for hair loss, giving you the very best support. We can help you through your journey from hair loss through to aftercare if your hair grows back. We provide a personalised service and will recommend the course of treatment or other solutions most appropriate to you.

We provide information, support and advice about your hair loss and identify the factors you will need to consider when choosing which solution is suitable for you.

We provide guidance on cutting and styling of your wig or integration piece and advice on what to do when your hair starts growing back.

Monthly Trichologist clinics are held with Eva Proudman, MIT IAT. Eva is widely known both in the UK and Internationally for her work with hair loss. She has appeared on TV many times and supports many major hair companies with her research into hair loss. All consultations are private and last for between 45 minutes and 1 hour; during this time all relevant areas of health, diet, lifestyle, family history, hair care regime will be discussed along with an in depth examination, including the use of a specialist scalp camera to arrive at a diagnosis and treatment plan.

Whatever the cause of your hair loss or the extent of the hair loss, we are here to help you.



Call Today for a Free Written Quotation

All Types of Tree Work Undertaken

- ✓ Crown Reductions
- ✓ Tree Felling
- ✓ Seasoned Hard Wood Logs
- ✓ Hedge Cutting
- ✓ Stump Grinding
- ✓ Landscaping
- ◆ Fully Insured to £10m
- ◆ Fully Qualified
- ◆ Local Authority Approved



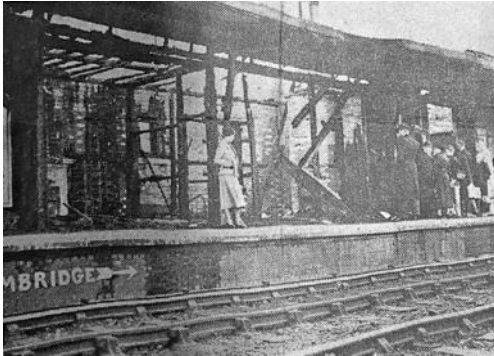
ELSENHAM VILLAGE HISTORY SOCIETY

By Mike Rea, Secretary ☎ 813634 ✉ evhs12@hotmail.co.uk
🌐 www.elsenham-history.co.uk



Many of you reading this article through your travels will be familiar with our station. Going to Cambridge these days means popping across to the booking office on Platform 1 before walking back to Platform 2 to catch the train. This was not always the case, until October 1937 there was an altogether more grand building on Platform 2 that housed a Booking Office, the Stationmaster's office, Waiting Room and the Lamp Room wherein was stored supplies of paraffin and the other bits and pieces that kept all the oil lamps around the station alight.

During the morning of 7th October 1937 a fire broke out in the Lamp Room that quickly spread to the rest of the building. A report in that day's Evening News read as follows:



The down platform at Elsenham (West Essex) L.N.E.R. railway station was damaged by fire early today. The stationmaster's office, the waiting room, the lamp-room and part of the roof were practically burnt out.

Stansted Fire Brigade prevented the flames from damaging the track. Traffic was held up for some time by hosepipes running across the metals but normal running has been restored.

It is maybe worth noting that at this time there were around a dozen staff employed at the station.

Our next meeting will be on Wednesday November 8 (8pm in the Memorial Hall) when we will welcome back Roger Barrett from the Stansted Local History Society. He will be coming along to tell the story of our neighbour Stansted Mountfitchet. Roger is a very good speaker so please, do come along for what promises to be a good evening.

Visitors are always welcome for a very modest two pounds and don't forget, membership costs just five pounds for a full year's meetings.

See you there.



Well, our Elsenham Farmers Market has definitely taken off and thank you all so much for supporting us. It's amazing!

There **will not be a Farmers Market in November**, as it will clash with the Elsenham Christmas Market which is at the Elsenham Golf Club that day, but at least we can go shopping there too.

The next market will be our **Christmas Farmers Market** on **SATURDAY 2nd DECEMBER**, at the Village Hall (next to the school). Please note that it will be at a **different time i.e. from 4-6pm**.

There will be festive themed handmade chocolates, perfect for a special gift (unless you scoff them beforehand), incredible sourdough and focaccia bread, and the most delicious homemade festive treats and let's face it, who doesn't love a treat at Christmas? There is always fabulous coffee and cakes to enjoy at our Market, maybe with a friend or to take home, and whilst you are treating yourself to that, why not buy some beautiful Christmas wreaths and other floral festive creations? Perhaps take home some handmade treats for your dog.....we can't forget our canine friends. There will be a really great selection of produce at the Markets. This festive Market is a work in progress, but we can safely say that you will not be disappointed.

From the market on October 28th onwards we are planning to start a little later, at 12.30pm, finishing at 2.30pm so please update your diaries with these new times. This is to give our stall holders more time to set up and ensure that they are ready for you, our customers.

We are very excited about our Farmers Market and look forward to introducing new and exciting consumable produce throughout 2024. Thank you for your support.

ELSENHAM WOMEN'S INSTITUTE

By Moyra Jackson ☎ 647351



We have recently had the opportunity to visit some lovely local WIs. We crossed the border into Hertfordshire Federation territory and went to Bishop's Stortford WI. We had a really interesting night and listened to a very accomplished speaker whose talk was on The French Resistance. Last week we went to Radwinter WI and had a really enjoyable time hearing about the skill of scrapbooking. We had the opportunity to look at a scrapbook from 1963 that Radwinter members had crafted, and won a national competition with their efforts.

Our own meeting was hosted by the members under the very capable leadership of Lynda Jolly, assisted by Lynda Bowcock and an amazing team. We made beautiful poppies out of ribbon under the guidance of Becky of FBL Quilting & Crafts from Harlow. Many thanks to Lynda and the team for all their hard work and careful organising, making it a wonderful meeting.

And talking about poppies, once more Elsenham WI will be hosting the refreshments in the Memorial Hall following the Act of Remembrance Service at the Memorial Garden. We will be placing our field of remembrance in the garden as we have done since 2014, hopefully including this year an extra-special display of crafted poppies and we look forward to seeing you all on Saturday 11 November. The Act of Remembrance starts at 10:45.



For our November Meeting on Thursday 16 November our speaker will be Mary Waterfall with 'Interesting Tales of a Jewellery Valuer'. Our competition is 'Something Pearl' so lots of rooting around for something that fits the bill.

Coming along to Elsenham WI is a really good way to meet new friends and while we are very proud to have a history of Jam and Jerusalem traditions, we are so much more than that and always happy to dispel any stereotypes associated with the WI. Why not come along (or come back), visitors and new members are always welcome and you can join at any time throughout the year.

Details of our programme, events and activities can be found on Facebook, Twitter and Instagram – search for Elsenham WI. Visitors are welcome to our monthly meetings so please come along. We meet at 7.45pm on the third Thursday in the month in the Memorial Hall.

Elsenham WI – There's a lot going on!

hpc (State Registered)
Chiropodist

CH09088

Home Visiting Practice

Mrs. Julie Golden
Est. 1994
01279 873492

A professional service at a
competitive rate



Advertise your business
in **Elsenham News**

Contact us at
elsenhamsnews@hotmail.co.uk

(See inside back cover for details on
rates.)

Essex Autospray

Your local Collision Repair Centre - Est 1982

- Free Courtesy Cars
- Free Estimates
- Low Bake Ovens
- Blackhawk Alignment



Tel: 01279 816296 E: info@essexautospray.co.uk

www.essexautospray.com

M11 Business Link, Parsonage Lane,

SCOUTING NEWS

By Matt Morland (Akela)

✉ 1sthenhamandelsenham@gmail.com



As we approach the Autumn half term, I've had a chance to reflect on the fact that our regular scouting update hasn't been as regular as we would have liked. The main reasons are twofold: 1. Our Leadership team have all been busy providing an exciting, action-packed programme for over 100 scouters from our villages, and 2. There is the age-old issue of limited volunteer numbers to share the workload.

The past Scouting year has not been without its challenges. We have, unfortunately, had to close one of our Beaver Colonies due to limited leader numbers and we were made homeless at short notice early in 2023. However, we are now enjoying settling into our new home at Ugley Village Hall.

Our Beavers programme has been very successful, with hikes, crafts, cooking and sports being key elements. There was also the long-awaited camp, which manifested itself as the "Spring '23 Fairies and Leprechauns Sleepover". Our Cubs have taken part in activities such as pioneering, cooking, DIY, hiking, sciences, archery, backwoods cooking, litter picking, theatre visits and fencing. They were also able to take part in JOTI (Jamboree on the Internet), County Mega Camp and the Embers Virtual Camp.

Scouts have been pushing the boundaries of adventurous activities, including open water swimming, bridge and catapult building, moonlight canoeing, an Air Traffic Control tower tour and bell ringing. Scouts have also taken part in County Backpack Camp at Thriftwood and our Summer Lake District Camp where activities included water sports on Lake Windemere, hiking up the Old Man of Coniston and Ghyll Scrambling. Two of our Scouts were also selected to take part in the International Scout Jamboree this year as part of the UK contingent who travelled to Jersey.

We have been very lucky this year to have had a number of Scouts moving up to volunteer as Young Leaders with our younger sections. A key strategy we targeted over six years ago was to have a Scout Troop feeding into the Young Leader programme to bring through the next generation of adult leaders. This project is now starting to bear fruit, but we still need more adult volunteers to support both the activities of the sections as well as the administration and running of the group. We continue to appeal to adults in our community to consider volunteering with us to ensure as many young people as possible can take part in Scouting activities. We are also currently looking for a new Group Secretary, so if you or someone you know may be interested in helping us, please get in touch.

ST MARY'S CHURCH ELSENHAM

Office@heuchurch.co.uk

Thought For The Month by *Louis Wilson*

On Saturday 28 October the winner of the 10th Rugby World Cup will have been decided. The tournament started way back on 8 September, and whether it's the Ryder Cup, the FA Cup or the Rugby World Cup, it is the nature of things that there can only be one winner (and it's not usually England).

But it is possible, even among the players themselves, to have a different perspective. Michael Jones played 55 times for the All Blacks despite refusing to play on Sundays. He was once asked about being a Christian in such an aggressive sport where tackles are hard and tough. He replied: 'Better to give than to receive!'

But he also said: 'Although I am honoured to represent New Zealand on the rugby pitch, my first allegiance is definitely to my Lord and Saviour Jesus Christ. When you stop playing rugby people easily forget you; one thing for which I would like to be remembered is as a person who put God before rugby.'

More recently, another player with the same perspective was Euan Murray. When he retired in 2015, he was Scotland's most capped tighthead prop forward.

Although brought up going to church, he ran away from God pretty fast once at university where he trained as a vet. The turning point came in September 2005 when he was knocked unconscious in a game against Munster. His head snapped back in collision with another player's knee. Some thought he was dead, but he slowly recovered.

He began reflecting on his life – his rotten, drink-filled body and extravagant lifestyle. Remembering what he had learned in church and what his mother had taught him from the Bible, he became desperate for forgiveness. Finally, he came to realise that God loved him, that Jesus died for his sin but that now he needed to come and submit to Jesus' rule in everything including rugby.

I once heard him explain Christianity using a mug of tea and a glass of pure water: 'This is the tea, all dirty and horrible: this is me, yeah?' Then pointing to the water, he says: 'That's Jesus – pure. But he has taken the filth upon himself and before God Jesus says, 'Punish me for their sins.' And look, he has given me the perfect goodness of Jesus. He has declared me innocent. I'm ashamed of the things I've done. But I'm thankful I have a Saviour. He saved me from that lifestyle. He's given me a new life.'

Lots of us love sport, and most of us love winning: so how helpful to be reminded that for those who are in Christ the outcome of a rugby match or any match, however disappointing, has no effect on unchanging eternal realities - *God made him (Christ) who had no sin to be sin for us, so that in him we might become the righteousness of God* (2 Corinthians 5: 21).

CHURCH EVENTS IN OUR VILLAGES NOVEMBER 2023

Church Services

Sunday 5th November

10:15 All Together All Age Service,
Elsenham Village Hall

18:00 Sunday@6, HUSCH, Henham

Sunday 12th November: Remembrance Sunday

08:45 Prayer Book Morning Prayer
Elsenham Church

10:00 Morning Service, Ugley Church

10:15 Morning Service,
Elsenham Village Hall

10:45 Remembrance Service at
Henham War Memorial

18:00 Sunday@6, HUSCH, Henham

Sunday 19th November

08:45 Prayer Book Morning Prayer
Elsenham Church

10:00 Prayer Book Communion
Ugley Church

10:15 Morning Service
Elsenham Village Hall

18:00 Sunday@6, HUSCH, Henham

Sunday 26th November

08:45 Prayer Book Communion
Elsenham Church

10:00 Morning Service, Ugley Church

10:15 Communion Service,
Elsenham Village Hall

18:00 Sunday@6, HUSCH, Henham

Acts of Remembrance

Saturday 11th November, 10.45am
Elsenham Memorial Garden followed by
refreshments at the Memorial Hall.

Sunday 12th November, 10:45am
Henham War Memorial followed by
refreshments at OSCA.

Ladies' Pudding Evening

Thu 30th November, 7.30 for 8.00pm,
OSCA, Henham. Delicious desserts &
cheese plus craft. Hear about why
Christmas is a surprise! Book your place
via office@heuchurch.co.uk

Other Regular Events

SUNDAYS:

Elsenham & Henham Sunday Club/
Explorers (Reception-Y5)

(Y1-Y6) Old Frank's, Elsenham
10.15am

Sundays: 12th, 19th & 26th

Pathfinders (Y6-Y9)

**HUSCH, Henham 6.00pm - leave
from service to meet in The Church
Hall, Henham.**

Sundays: 5th, 12th, 19th & 26th

Crammin' (Y10-Y13)

**HUSCH, Henham 6.00pm followed by
7.00pm at OSCA Library, Henham**

Sundays: 5th, 12th, 19th & 26th

MID-WEEK AND SATURDAY:

Start the Week with Prayer

Church Hall, Henham 9.30am

Mondays: 6th, 13th, 20th & 27th

Seekers After School Bible Club

(Y3-Y4) Old Frank's 3.20pm

Mondays: 6th, 13th, 20th & 27th

Christian Play (Y1-Y2)

Rowan House, Elsenham 3.15pm

Tuesdays: 7th, 14th, 21st & 28th

Little Fishes Pre-School Group

Church Hall, Henham 10.30am

Thursday: 2nd, 9th, 16th, 23rd & 30th

Little Fishes Pre-School Group

Elsenham Memorial Hall 10.00am

Fridays: 3rd, 10th, 17th & 24th

Church Lunch Club

Elsenham Memorial Hall 12.30pm

Fridays: (2nd & 4th Friday of the month):
10th & 24th

For information on all these events,
please contact office@heuchurch.co.uk

tdcelectrical

covering all aspects of
domestic electrical installations

contact us for a free estimate

07960 941138

contact@tdcelectrical.com

www.tdcelectrical.com



BURY LODGE

HOTEL | WEDDINGS | EVENTS

Weddings – Parties – School Proms – Wakes – Dinner & Dances –
Corporate Events

We are a family run 16th century barn, and we can accommodate up to 250.

Using this code BURY10 you will receive 10% off any booking made from this advert.

Email: teresa@burylodge.com

Tel: 07741845201 / 01279 816737

Bury Lodge Lane, Stansted, CM24 8QE

AID FOR ROMANIA

By Richard Peake ☎ 850374

We are now collecting for the April lorry where some of the goods will be given free to nearly 40 needy families in Mărășești (not far from the border with Ukraine) as nominated by the local Baptist church and others by the town mayor, with the better quality ones sold through our charity shop out there with proceeds helping the same poor sections of the population with health, education and improving their terrible housing conditions.

We are now wanting SUMMER clothes and shoes for adults & children (under three years must be new). Single and Z beds with mattresses (sturdy iron or wooden framed beds are very desirable - no divans).

Cushions, bed sheets, pillows, duvets and blankets (single and double), towels, toiletries (including loo rolls), umbrellas and rugs (no carpet offcuts).

Building & workshop tools (also some types of gardening tools and sturdy wheelbarrows) and a sack barrow.

Surplus school tables (must be 2ft clearance underneath ie not infant) and stackable adult size chairs (please ask any contact with a local school or village hall who are / maybe refurbishing).

Sturdy chest of drawers (not flat pack built as these do not survive the five day truck journey to Romania), bedside cabinets, kitchen/dining tables (either drop-leaf or removable legs) and corner display units. Irons and boards as well as air driers for laundry.

Kitchen items (crocery, cutlery, utensils, pots/pans – especially big sizes eg preserving pans).

Wheelchairs, crutches, walking sticks, zimmers. Bandages and dressings (absolutely NO pills, medicines or creams).

Rucksacks and holdalls (must be in good condition). Costume jewellery.

Ear defenders for the manual workers and high-viz vests/jackets.

Small toys such as push-along cars, cuddly soft toys etc (no big toys as these cause much jealousy!). Footballs.

Cash donations for the cost of the lorry as it now costs more to send since we must now also clear customs in Rotterdam.

If you have any of the above please bring them around to 1 Hall Close, Henham during November. Contact the above first ☎ 850374 or 07831 406225 to arrange delivery etc.

JOHN COLEBY

Experienced Interior and Exterior Decorator

For a friendly, reliable service please telephone
01279 815510 or 0793 9070818
for a free estimate



replaceglaze
Replace, Repair & Revive Your Double Glazing

All types of double glazing repairs, maintenance & installations, including emergency callouts. At replaceglaze.com we provide a reputable, family-run double glazing repair & installation service.

Our services include:

- Double glazing installations, repairs & maintenance
- Aluminium, composite & uPVC installations
- Windows & door handles
- Locks & hinges
- Mistied units
- Patio door wheels
- Door adjustments & lubrication
- Aluminium bifolding doors
- Composite doors
- Aluminium/uPVC roof lanterns



REPLACEGLAZE

☎ 01279 282997 01371 701000

✉ info@replaceglaze.com www.replaceglaze.com

📷 [replaceglaze](https://www.instagram.com/replaceglaze)

Luxury Toilet Hire (UK) Ltd



Whether you are arranging a wedding, private party or corporate event, let Luxury Toilet Hire (UK) Ltd provide you with the perfect toilet facility to make your occasion a memorable success.

Cesspit emptying also undertaken.

Tel: 01371 873003 or 01279 504638
Email: info@luxurytoilethire.co.uk
Web: www.luxurytoilethireltd.co.uk



We also hire out mobile fridge and freezer units.



Please contact us for a quote:

Tel: 01371 873003 or 01279 504638
Email: info@chillermatic.com Web: www.chillermatic.com

NEW BEGINNINGS COUNSELLING

A safe environment to explore your thoughts and feelings

A private practice with parking based in Takeley

Represented by Michele Simpson MBACP

Ever felt sad, overwhelmed, lost or just not quite right? Most people at some point in their lives have felt so overwhelmed that they find it impossible to see a way out of a situation.

My beliefs are that everybody has the resources within themselves, given the right environment, to experience therapeutic change. Give me a call to see how I can help you to improve your life.

Counselling could enable you to have that new beginning
phone: 07956 224954 or 01279 879009

email: ms@newbeginningscounselling.co.uk
www.newbeginningscounselling.co.uk

NEWS FROM STANSTED FIRE STATION

☎ 01376 575830

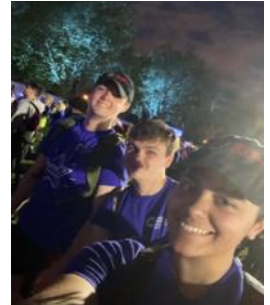
✉ stanstead.oc@essex-fire.gov.uk



We hope everyone has enjoyed this glorious weather we have been experiencing towards the end of September and into October. The crew at Stansted have been busy in the last days of summer, training and attending incidents.

The charity work also picked up in the month of September with two members of our team taking on super human tasks. Crew Manager Steve Perry (below left) took part in the gruelling 30 mile Commando Shuffle challenge across Dartmoor in the hottest challenge ever recorded (at 33 degrees). He completed the course in 11 hours 59 minutes, carrying 25

pounds of essential kit and two litres of water per checkpoint, raising money for the Fire-Fighters charity. Fire-Fighter Keegan Johnson (right) also put her body through its paces taking part in London (Night Shine Walk), walking through the



streets of London during the night covering 26 miles and raising money for Cancer Research UK. Congratulations to both of you, the station is incredibly proud of you.

As the nights draw in and conditions get wetter the crew at Stansted would like to focus this month's issue on the dangers of flood water during the Autumn months. Please see some safety advice and tips below:

Flood Safety Tips

Keep an eye on weather reports for flooding in your area. Do not travel in heavy rain unless absolutely necessary.

Do not ignore road closed signs.

Never attempt to cross or drive through floodwater if you don't know how deep the water is. Just two feet of water will float a car.

Never try to swim through fast flowing water or floodwater – you may get swept away or be injured by an object in the water.

Don't assume fords are safe to cross just because the road is not closed. Always look at the river level gauge and use your common sense.

Floodwater may be contaminated. Never allow children or pets to go near or play in floodwater.

Prepare a flood kit in case your home floods or you are trapped in a vehicle for any period. This should contain a change of clothing, wellies, waterproofs and blankets as well as a torch, charged mobile, medication and a first aid kit and a list of useful numbers, including flood alert lines.

Stay safe and best wishes from Stansted Fire Station.

[Facebook](#)

[Stansted Fire Station](#)

01279 871 777 - 0800 587 2556

6 Newman Road, Little Canfield, Dunmow, Essex, CM6 1GR

MEDIACOMS

Aerial Satellite AV Security

- Aerial Installations
- CCTV & Security Alarms
- Audio Visual Installations
- Wireless & Wired Networks
- Solar Panel Installations
- Sky Installations & Subscriptions
- Freesat Installations & Receivers
- Multiroom Music & TV Distribution
- TV Wall Mounting Services
- Family Run Business



www.mediacom.com

info@mediacom.com



Pike's Plumbing & Heating

Whether you're looking for a plumber or heating engineer, Pike's Plumbing & Heating can help.

If it's an emergency, simple problem or you're just thinking about a new boiler or bathroom give me a call – I'm available when you need me 24/7. Now's a good time to think about servicing your boiler too and make sure you're not left out in the cold! No Call-Out Charges & Free Quotations

Tel: 07889 140035

Email: info@pikesph.co.uk

Web: www.pikesph.co.uk

Craig Pike



NATURAL OUTLOOK ON OCTOBER

By Heather Salvidge ☎ 814153



When you wake up on a November morning, depending how dark it is, you are greeted either by a hard frost, a light frost, a dry and mildish day, drizzle, light rain, rain hammering down, a breeze, a strong wind or a storm with a gale. Take your pick.

On a fine day I could be driving around doing the checks on some of the Special Roadside Verges (SRVs) and at this time of year I get to see some birds as well.

Daisley Road, on the edge of Lindsell, has a verge about three quarters of a mile long and fields on both sides. It is a good site for seeing the 'clerical' cock pheasants, i.e. the type with a white collar around the neck. Many pheasants in this county are not native but are bred for shooting and eating and the males may vary in colouring. The standards have a dark green head and red wattles, golden brown upper and underparts with dark speckles, a black belly stripe and some lighter wing feathers – and of course his long tail. There may be females about but as they are mainly sandy brown with darker speckles and a shorter tail, they are better camouflaged and less easy to spot. There are different male colourings, some are almost black the result of interbreeding with more exotic types. Daisley is a good place to see red-legged partridges, another introduced species to add to the shooting season, red-leggeds are more colourful than our native greys. Reds have white around the face with a black edge and black stripes and ginger ones on the flanks of the gingerish back and, guess what, red legs. They are often seen in groups and can run extremely fast before taking off. The grey partridges are less common round here and tend to inhabit farmland further away from villages and are less easy to see. Again, the male is more colourful than the female, both having gingery faces and stripes on their grey flanks and brown wings but the male's black horseshoe below is much bigger than hers. Juveniles are a much plainer brown all over but all of them have grey legs.

Checking the SRV on Folly Mill Lane which runs uphill from the Chelmer Valley past the Fishing Club's Lake I once saw a good flock of fieldfares – one of our 'winter thrushes'. Beak to tail it is 10". It has a steely blue head, neck and rump and some underparts. There is a sort of ginger 'cape' across the shoulders and on most of the wings. Throat, chest, and some underparts are speckled. This flock were feeding on a harvested field lying fallow. Nearer home last winter there was a flock of a dozen or so on the 'Railway' footpath up to Henham perched on the wires over ripe blackberries and sloes. Redwings, another 'winter thrush' are also seen about and they are a bit smaller than a song thrush. They have a pale brown head crest, shoulders, back and rump, a very marked eye stripe and an orangy/red patch under the "armpits" of its wings. They are very keen on berries especially hawthorn and like fieldfare, with which they sometimes flock, worms in short grass. These both migrate at night, so you don't see them arrive.

A few years ago a flock of waxwings spent two days in Robin Hood Road until they had finished the berries on the then tree by the former surgery – what a treat!



Double Glazed Units – SAME DAY

- Table Tops
- Shelves
- Emergency Glazing
- Replacement Misted Double Glazing
- Greenhouse Glass
- Cat and Dog Flaps Fitted
- Splash Backs – Any Colour
- Glass Cut To Size
- Emergency Boarding
- Safety Glass
- Mirrors

LOCAL COMPANY – GREAT PRICES – RELIABLE PROMPT SERVICE

Elsenham – Great Dunmow – Bishops Stortford - Stansted



- alun
- design
- consultancy
- architectural design
- planning
- project management
- interior design

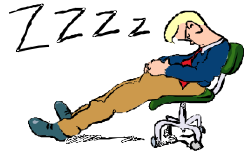
Local architecture company with over 25 years experience designing and obtaining approval for new homes, extensions and conversions

Free consultation
01799 540 600

info@alundesign.com

www.alundesign.com

Neville House, Station Road,
Wendens Ambo, Saffron
Walden, Essex, CB11 4LB



Our homes in Elsenham- Gill & Peter Burgess

Originally working at Southend Airport, I moved with my wife Gill and our eldest son to Elsenham in 1969 to work at Stansted Airport. Our first home in this village was at number 32 "New Road." The site was originally Gold's Nurseries with lots of green houses. One of our first visitors was Frank Todd who looked after the boilers at the nurseries. On our arrival in Elsenham, Station Road had no pavement, a ditch either side and grass banks.

In 1978 my wife collected me from Heathrow Airport. She was very excited as Arthur and Mary Scholes had put the orchards up for sale. They agreed to let us buy the property as Gill helped to pick the crop with co-worker Pam Rochford. We were the owners for the next 20 years. For 15 years we ran the orchards, pruning, treating, picking and selling produce. Then we grew and sold Christmas Trees for 10 years, bred rabbits for eight years and for three years we fattened geese. One day they escaped and wobbled up Station Road, much to the amusement of passers-by. It all became too much and we wanted some "play time." So in 1999/2000 we moved to "The Stocks " on Station Road. We greatly enjoyed our time there. I loved the garden and opening it for "Open Day" Flower Show.

However on 13 February 2021 we moved again to "Southfield Close," where we are now. Our neighbours are very good and helped us a lot during "Covid." More of this can be heard on www.elsenham-history.co.uk just navigate to People Recordings and Transcripts.

Ray
Franklin

ON THE BUSES—AN UPDATE

By Ray Franklin

My thanks to the contributors to the Traffic Questionnaire. The response was great and "Essex Transport" have cancelled meetings to complete it. In my response I have made observations that multiple builders are still constructing estates in Elsenham and one builder is making two bus shelters and an electronic time table board. A very considerable amount of money is being given to support the 7 & 7A bus services. This must seriously affect the questionnaire findings.



Options Hair Design
2 Ambrose Corner, Elsenham
01279 812665
www.optionssalon.co.uk

At Options Hair Design we work hard to provide the very best of care to our clients.

From the moment you enter our salon our aim is for you to feel like the most confident and beautiful version of yourself.

Our dedicated and talented team of professionals use the very best and innovative, organic products to achieve the look that you want for your hair. We work with you to achieve this as we believe that confidence comes from a hairstyle that you are happy with.

Our team of five stylists each bring with them a wealth of experience, and each display their own creativity whether in colouring, cutting, styling, or finishing.

Our ethos is that the salon experience we provide ensures you leave feeling relaxed, pampered and confident.



**TAKELEY IRONING
&
DRY CLEANING**

OPENING TIMES
MONDAY - FRIDAY 8AM - 5PM
SATURDAY 8AM TO 12PM

FREE LOCAL COLLECTION & DELIVERY TO YOUR DOOR

Takeley, Elsenham, Henham, Stansted, Felsted, Hatfield Broadoak, Hatfield Heath, Sheering, Dunmow, Sawbridgeworth, Broxton, Spellbrook, Molehill Green, Broxton, Little Canfield.

- ✓ WASHING & IRONING
- ✓ IN HOUSE DRY CLEANING
- ✓ 48 HOUR SERVICE
- ✓ DUVETS
- ✓ CURTAINS
- ✓ ALTERATIONS
- ✓ WEDDING DRESSES

The Centre, Dunmow Road (Behind Londis)
Takeley, Bishops Stortford
Herts, CM22 6SH

Email: takeleyironing@gmail.com
takeleydrycleaning@gmail.com

Tel: 01279 871245



By the time you get to read this report our Art Show at the Church will have been and gone. I hope for those of you who were able to get the chance to visit our exhibition you enjoyed the display and may have even purchased a painting by one of our local artists.

At our last committee meeting we discussed our forthcoming fundraising events for the Fabric Fund. On the weekend of December 2nd and 3rd we will be holding our Christmas Tree Festival in St. Mary's Church. Last year we achieved our best year ever and it was a remarkable sight when all the trees were lit up. It is an excellent way to promote your club or business. So why not, if you have not already, consider entering a tree for a small fee into this year's Festival. Entry forms are available from Elizabeth Barker or Jill Hill on 01279 812397.

Looking further ahead, Gordon Barker's family have kindly offered to put on an exhibition of his wonderful collection of post cards and photographs of old Elsenham in years gone by on 1st and 2nd June 2024. Those of you who remember Gordon's photography shows in the Village Hall will recall these events were always sold out. An event not to miss as you will never get another chance to see such an amazing amount of history of our Village and Church.

We are also planning to hold another bat evening at the Church next autumn. More details on this to follow.

ULTRASOUND MACHINE APPEAL

By Janice McDonald

I am the current chair of Stansted Surgery Patient Participation Group (PPG) and very much appreciate what the surgery has done and continues to do for this community. The next challenge is to administer flu and covid jabs to thousands of us.

Over the years the PPG has tried to raise money for pieces of equipment not provided by the NHS.

The physiotherapist lead, as well as the GPs at Stansted, would be helped in their role if they had the use of a handheld ultrasound machine.

Diagnostic ultrasound is an imaging method that uses sound waves to produce images of structures within your body. The images can provide valuable information for diagnosing and directing treatment for a variety of diseases and conditions. Currently, if a doctor thinks that images of your internal structures can help diagnose your condition, they will refer you to a local hospital and you will be placed on a waiting list for this to be done.

Continued on next page

GARRETT'S GARAGE SERVICES

42 Golds Business Park, Elsenham
Bishop's Stortford, Herts CM22 6JX



- Mechanical Repairs
 - Servicing
 - Tyres
 - Engine Tuning
 - Computer Diagnosis
 - Windscreen Repairs
 - M.O.T.'s - Catalyst & Diesel Tested
 - E.H.D.C. - Authorised Hackney Carriage Testers
 - Batteries
 - Exhausts
- MODERN WELL MAINTAINED WORKSHOP*
- ALL MAKES OF VEHICLE*
- *FREE COLLECTION AND*
*DELIVERY SERVICE**

TEL: 01279 647777 FAX 01279 817622

CLEAR OVENS

Oven Cleaning Specialists

01279 89 89 96

We accept cards!

Make your oven look showroom fresh with a professional clean from **Clear Ovens**. Our fully insured expert technicians will make it shine like new.



Covering Sawbridgeworth, Harlow Epping, Great Dunmow, Braintree, Stansted, Bishop's Stortford and surrounding areas.

01279 89 89 96 or visit us online at
www.clearovens.co.uk

The difference is clear

U3A STANSTED

Eileen Quinn

✉ stanstedu3a@gmail.com 🌐 www.u3asites.org.uk/stansted



A new line dancing group is now up and running. To have some fun, turn up to St John's Hall on Thursdays from 1.30pm to 2.15pm, except for the 3rd Thursday of the month when the u3a have the monthly meeting. Each lesson costs £5 and is suitable for all abilities. If you need to know more contact Barbara: bafidell@gmail.com. A new Rumikub (playing cards) group has also just started. Please look online to find out all the details or ask at the next meeting.

An enthusiastic number of the gardening group visited the Tudor Garden at Cressing Temple in September. They were given a short introduction to the history of the garden by the Head Gardener, Rebecca. She explained how, in the Tudor period, a garden was required to be a source of medicinal products as well as a source of food. The current design is a faithful recreation, due to surviving features and the fact that the plants used are ones which have been grown since the late Mediaeval and Tudor period. It is hoped that we can return to Cressing Temple when the gardens are at their peak in May and June. If we have enough people, we will be able to enjoy a full guided tour with detailed explanations of the plants and their uses in the Tudor household.

The u3a movement itself has planted almost 10,000 trees as part of our u3a Anniversary Woodland. The trees, although still small, are growing well, having survived the hottest and driest summer in South Wales in modern history!

Our speaker at the November 16 meeting will be Ray Clark. He will give a witty and humorous talk entitled 'I Could Say Something Brilliant at Any Moment'. He will tell us how his career started in commercial Radio in the UK and the USA.

ULTRASOUND MACHINE APPEAL

Continued from previous page

The ultrasound will then be performed by someone who does not know the details of your condition, and the results will be sent back to your doctor. As the portability and quality of ultrasound machines have developed, they have become an accessible tool for doctors' surgeries. The benefits of performing ultrasound scans within the doctors' surgery include improved care by integrating the ultrasound findings with the clinical history and examination, increasing the speed of diagnosis and treatment, reduced pressure on hospital services and reduced travel for patients. The cost of this equipment is £5000, and it would, of course, be available for use by all the doctors and physiotherapists at the surgery.

If you can donate to this worthy cause, it would be very much appreciated. Cheques should be made payable to The Stansted Surgery, or payments made directly to sort code 30 90 84 account number 01496140 (The Stansted Surgery, Lloyds Bank). All donations received are audited by the surgery's accountants to ensure that the donations are spent on the intended purpose. Donations made are declared and evidenced to the PPG at our regular meetings.



Collector, collator and
relator of life's special
events

Are you planning or considering: a Memorial Service, a Funeral,
Renewal of Vows, a Wedding or a Naming Celebration?

A Celebrant led ceremony will help you
to create special memories of the day.

For more information please contact:

janetterickwood_celebrant@btinternet.com

www.janetterickwoodcelebrant.co.uk ☎ 07889 375200

Facebook @JRCelebrant



- ✦ Windows
- ✦ Conservatories
- ✦ UPVC Soffits & Fascias
- ✦ Gutters
- ✦ Patio & Driveway Cleaning

We're a family run business
based in Herts & Essex with more
than 20 years experience.
We provide one-off or regular
visits, it's up to you.
Very friendly -
No job too big or small

Contact: Tony

Tel: 07977 970 371

Email: tony@boss-cleaning.co.uk

Website: www.boss-cleaning.co.uk





Before the 15th century, people attending a church service would stand or kneel. When benches or pews were introduced, they were sometimes decorated by skilled craftsmen. In particular, the top of the ends of some pews were carved with figures called finials or poppyheads.

The word poppyhead comes from Latin via Old French meaning the poop or figurehead of a ship. Poppyheads can be found in churches across the country and they are particularly prevalent in East Anglia. The Hundred Parishes has some fascinating examples.

The carved figures can represent almost anything. Some are of flowers or fruit or animals. Mythical creatures or demons were introduced to remind parishioners that if they led a sinful life they would go to hell. Saints and angels however meant that if you lived a good life you would go to heaven.

You will also find carved creatures depicting saints. In St. Mary's, Hatfield Broad Oak, 300-year-old poppyheads symbolize saints, with a lion for Mark, a bull for Luke and an eagle for John, while Matthew is represented by a 'divine man'.



Ickleton's parish church has some fine examples of medieval carved poppyheads. One shows St. Michael weighing souls of the dead and another features a dragon-like creature.

In Wendens Ambo parish church you will find a fearsome-looking beast which you may meet if your soul goes to hell!



Linton's church has a wide range of subjects including scribes resting their books, one on the back of an angel and another on a dragon.

When you are out and about, I encourage you to seek out these wonderful examples of ancient craftsmanship. Please let us know of others on either the feedback page on our website, www.hundredparishes.org.uk or share a photo with the Hundred Parishes Group on Facebook: www.facebook.com/groups/562396892237665

The Hundred Parishes is 450 square miles of northwest Essex, northeast Hertfordshire and southern Cambridgeshire that is largely unspoilt and is richly endowed with many fine examples of agricultural and built heritage. The area has shared a common history which shaped and preserved its distinctive landscape of small and medium-sized farms linked by winding lanes and ancient rights of way to hamlets, villages and then to small market towns. For more information visit www.hundredparishes.org.uk.

Taylor Computer Services (Stansted)

On-site Computer Maintenance/Repairs

DON'T BE RESTRICTED TO OFFICE HOURS, I CAN VISIT YOUR HOME OR OFFICE DURING THE DAY, EVENINGS OR WEEKENDS AT A TIME TO SUIT YOU.

Email and Broadband Setup, Data Transfers/Data Recovery, Hardware & Software Installation, Virus & Spyware Removal & Protection, New PC Setup & Training

Call Derrick on 01279 816418 ~ 07926 289749
Email: Info@tcsstansted.co.uk



SDS Installations Ltd

AERIAL AND SATELLITE SERVICES
FOREIGN SATELLITE SYSTEMS - CCTV - EXTRA TV POINTS - SKY LINK UPS
PHONE POINTS - HOME SIGNAL DISTRIBUTION - WALL MOUNTED PLASMA/
LCD SCREENS - CABLES SUPPLIED AND HIDDEN

Alan Smith
50 Sunnyside
Stansted
Essex CM24 8AX

01279 279012
07771 881042
sdsinstallations@hotmail.com
sdsinstallations.com

YOUNG'S

WINDOW CLEANING SERVICE

We specialise in residential properties offering a quality and regular service for exterior and interior cleans
Serving the Elsenham community for the last 10 years

Call or text Malcolm for a FREE quote
07817 481901

ELSENHAM BOWLS AND SOCIAL CLUB

By Trevor Hackett



When you read this month's article, the Bowls Season will be well and truly over and we will be looking forward to our AGM on Thursday 30 November at 8 pm in the Clubhouse.

The competition winners this year were as follows:

Men's Singles	Chris Waite
Men's Pairs	Trevor Hackett & David Spearman
Men's Triples	Steve Culling, Bill Eldridge & Trevor Hackett
Ladies Singles	Sue Waite
Ladies Pairs	Do Hackett & Pauline Martin
Charlie Pelling Handicap Singles	Duncan Dellow
Tom Wright Novice Singles	Dee Morris
Mixed Pairs	Pauline Martin & Bill Eldridge
Mixed Triples	Steve Hardy, Dee Morris & John Coleby
2 Wood Singles	Chris Waite
2 Wood pairs	Duncan Dellow & Paul Jordan

On the social front our two Bingo nights in January are Saturday 6 and 20 and 3 and 17 in February. 7pm for eyes down at 7.30 pm.

Our live music artist on 13 January is Pete Webb as Elvis Presley. Tickets are now on sale in the bar and from Trevor Hackett (07445 437437) priced at just £6 including nibbles. 7.30 for 8 pm

On 27 January we have a Quiz Night with your resident Quizmaster Trevor Hackett. Tables of eight. £6 per person / brain includes light supper. 7.30 for 8 pm.

In March we have an excellent guitarist and former Beatles Tribute act member Paul Sharp covering music from the 60s onwards. This will be followed in May by Gary Benjafield a leading Neil Diamond tribute act. In July we have Ali Rose as Dusty Springfield amongst others.

The crib leagues are well under way having started in September. The darts players continue to enjoy themselves on a Wednesday evening in the club house with two boards in use. Short mat bowls is being played on Thursday nights.

I look forward to seeing you in the club house during the winter.

USE IT OR LOSE IT - A TRAVEL COST COMPARISON

By Ray Franklin

You want to go to and return from Bishop's Stortford (10 miles). So let's evaluate the cost.

By car. It is impossible to accurately determine full cost (depends on engine size, age and type of car). However H.M.R.C. suggest **£4.50** per mile then add parking charge for two hours **£2.00**. **By Car about £6.50**

By train £7.00-£8.00

By bus. A return ticket on a "Stephensons" bus is **£4.00** and **free** for a pensioner / concession.



T.J. Patmore
Building Services

Extensions – Loft Conversions
Roof work – Carpentry – Roof Tiling
First and second fix carpentry
Kitchen fitting
Built in wardrobes
Decorating interior and exterior
Floor and wall tiling
Fencing – Decking – Patios
Supply and fix u.p.v.c. windows
House maintenance

*Call Trevor for friendly help, advice
and FREE estimates*

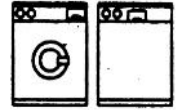
mob 07932 666224



Established 1972
Domestic Appliance Repair Service

We offer Specialist Dishwasher,
Refrigeration & Cooker Service, in addition
to our long established and renowned
Washing Machine Service

Our Engineers are
Experienced and
Trained to service
most makes



01279 658767

Friendly Prompt Service



Tree Topping & Felling
Pruning & Pollarding
Hedges cut, Trimmed & Removed
All waste Chipped & Removed
Garden, Garage & Site Clearance
Gravel Driveways & Paths
Fencing

Turf Supplied & Laid
Jet Washing Paths & Driveways

Local Tradesman
20 years experience

For a free estimate Phone

07903 621657

08000 588057

14 Day Cooling off Period



Do you have a
property to rent?

TBS Homes Ltd

I help property owners achieve a
consistent rental income over 3-5
years with no fees and keep the
house in show home condition
with regular cleaning and
inspections.

If you have a 3, 4 or 5 bedroom
house please get in touch and see
how I can help you.

Phone: 01279 742 340

Text: 07471 370 908

email info@tbshomes.co.uk

ELSENHAM TENNIS CLUB

By Petra Studholme ☎814667



Half-price membership from 1st October 2023 to 31st March 2024.

We have floodlights so club nights, lessons and members play are available in the evenings in winter!

We are offering half-price membership for all our subscriptions so full membership would be only £35, senior £21.25 and under eighteen £8, for example. Other membership packages are also available for couples and the whole family. Please note that you won't see these half-price packages yet on our website, they will come online on 1st October, this is just a pre-announcement for those interested to join. You will get your own key to access the courts, can book online at your convenience and participate in our club events such as club nights, weekend or morning play sessions. **If you want to find out more about Elsenham Tennis Club, go to our website or find us on Facebook.**

Essex Small Club League matches

Men's: currently lying second in Division I.

Mixed: we unfortunately had to withdraw as we have too many injured players right now.

Looking forward to starting the winter season though.

Coaching – individual and group sessions

We have individual and group coaching sessions, Cardio run by our dedicated and experienced coach Steve Smith. Get in touch with him via email:

stevesmith865@hotmail.com ☎ 07790 561817. Please note that Cardio is open to non-members. Cardio is a great way to get or stay fit. Our coach's choice of music is sometimes questionable, but everyone is definitely having fun and is getting a great workout.

Rackets and balls

Steve has high quality rackets, reasonably priced for you to try before you purchase as well as Dunlop balls.

Hire our courts – open to non-members

Hire our courts to play with friends and family - £3 per adult, and 50p for under eighteens. You can email us or message on Facebook for availability, but please, if possible, give us 24hrs notice as we need to arrange to open the courts for you.

Tennis Club Weekly Activities

Tuesday evening – 6.30pm cardio tennis
(non members welcome)

Tuesday evening – 7.30pm club night

Wednesday morning – 10am casual play

Thursday evening – 6.30pm cardio tennis

(non members welcome)

Thursday evening – 7.30pm team practice
Sessions

Friday morning – 10am casual play

Sunday afternoon – 2pm casual play

**GLYNN'S
CHIMNEY SWEEPS**
Est. 1995



**VACUUM AND
BRUSH**

**NACS MEMBERS
HETAS APPROVED**

COMPETITIVELY PRICED

01279 424983

www.glynnschimneysweeps.com

CHIROPODIST & PODIATRIST

Bishop's Stortford

- Orthotics
- Diabetic Foot Care
- Saturday Clinics
- Routine Treatment

R. Handford & Colleagues
H.C. P.C Registered

Bishop's Stortford - 16 Hockerill Street

01279 652249

www.feet.org.uk

DANIEL ROBINSON & SONS

Independent Family Funeral Directors & Monumental Masons

Est 1892

Always here when you need us...

- Arrangements in the comfort of your own home, if preferred
- Private Chapel of Rest
- Pre-paid funeral planning services
- Traditional & contemporary funerals to suit your wishes



**79/81 South Street
BISHOP'S STORTFORD
01279 655477**

www.drobinson.co.uk

COOKERY CORNER

By Sue Johnson ☎ 812704



Here is a lovely, relaxed recipe for making mulled wine. You can of course put all the ingredients in a saucepan on the hob if you don't have a slow cooker. Smell the wonderful seasonal aroma.

SLOW COOKER MULLED WINE (serves 12)

- 2 x 750ml bottles of red wine
- 3½ fl oz (100ml) Cointreau
- Zest and juice of two large oranges
- Zest of 1 lemon
- 4oz (110g) golden caster sugar (or to taste)
- 2 cinnamon sticks
- 3 star anise
- 4 cloves
- Slices of orange to serve

Put all the ingredients (except the slices of orange) in a slow cooker on low for about 2 hours until hot. Ladle into heatproof glasses and serve with the slices of orange. Using the keep warm setting will ensure the mulled wine stays hot during the party!

CHEF'S RECOMMENTATIONS: I found the original recipe very sweet, so I use less sugar. You can always taste the mulled wine once warm and add more sugar as required.



The Christmas Choir is back!

The Christmas Choir is being formed again for our services of Carols by Candlelight. Join us to sing the traditional carols telling the story of the birth of the Christ Child:



DATES OF SERVICES:

- Sunday 10th December, 4 pm at St Mary's, Elsenham
- Sunday 17th December, 4 pm at St Peter's, Ugley
- Sunday 24th December, 7 pm at the School Hall in Henham

DATES OF REHEARSALS:

- Friday 10th November, 7.30 pm at St Mary's, Elsenham
- Friday 17th November, 7.30 pm at St Peter's, Ugley
- Friday 24th November, 7.30 pm at St Mary's, Elsenham
- Friday 1st December, 7.30 pm at St Peter's, Ugley
- Friday 8th December, 7.30 pm at St Mary's, Elsenham
- Friday 22nd December at 7.30 pm in Henham (tbc)

Choir members old and new from any of our three parishes are most welcome. If you have any questions, contact Maxine Mott 01279 812516 or motts@grahammott.plus.com.

Elsenham Christmas Wreath Workshops

Get into the festive mood by creating your own bespoke door wreath. A varied range of interesting foliage and decorative items, natural to sparkly, are provided. Festive drinks and nibbles included too. Please bring your own scissors or secateurs.

Book via: www.oneflowers.co.uk



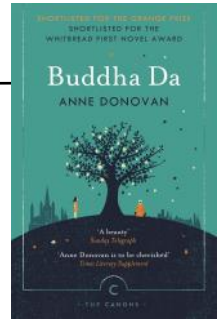
Bought to the village by Elsenham based florists and flower growers:



Berries Produce
All things Flora and Fauna

BUDDHA DA by Anne Donovan

Reviewed by Marion Giles for Elsenham Book Group



'Anne Marie's Da, a Glaswegian painter and decorator, has always been game for a laugh. So when he first tells his family that he's taking up meditation at the Buddhist Centre in town, no one takes him seriously. But as Jimmy becomes more involved in his search for the spiritual his beliefs start to come into conflict with the needs of his wife, Liz, and cracks begin to form in their previously happy family.'

With grace, humour and humility Anne Donovan's beloved debut tells the story of one man's search for a higher power. But in his search for meaning, Jimmy might be about to lose the thing that matters most...' So says the blurb on the back of the book.

'An enchanting novel in which ordinary lives are illuminated with extraordinary charm' *Daily Telegraph*

Buddha Da was this month's choice. The book group wanted to celebrate our twenty-year anniversary by reading a novel from 2003. Shortlisted for the Orange Prize and Whitbread First Novel Award, *Buddha Da* chronicles the changes in an ordinary Glasgow family by one man's decision. The novel is written in full Glaswegian tongue and the dialect and vocabulary is very specific to Glasgow.

The story is told by the three main characters whose voice is heard through alternating chapters. We first meet Anne Marie, a 12-yr old girl, who tells us about her 'da,' Jimmy, who has announced that he has decided to become a Buddhist. She finds this a bit confusing as, 'My da's a nutter,' and she doesn't really understand what he is doing. She has a great singing voice and she and her friend, Nisha, work together to submit a CD to a competition.

Next we meet, Liz, Anne-Marie's mother and Jimmy's wife. Liz and Jimmy were married young and have one child, although there have been two miscarriages. Liz would have liked another child and is frustrated that Jimmy doesn't seem to have noticed this. Liz presents a picture of a working mother and housewife who also spends every evening calling in on her mother, shopping, cooking and doing housework. She is very fond of her mother and is upset when she dies. Liz prepares a full Catholic funeral. Liz doesn't understand Jimmy's decision and as he becomes more and more involved with his quest for spiritual understanding, Liz draws further and further away from him until he leaves. She starts a relationship with a much younger man who is drawn to her.

Lastly, we meet Jimmy, a painter and decorator, who having found himself drawn into the Buddhist world seems to forget about his responsibilities. The pursuit of his dream has serious consequences for his family. However, it is not a sad book and has a lot of humour. We don't really learn much about Buddhism and strangely this doesn't seem to be the deciding factor in the conclusion.

Published by: Canongate Books

ISBN: 978-1786894007

Editorial Information

Articles

The **last day** for editors to receive articles, advertising and letters, which must contain the author's name and address (which may be withheld), is the 8th of each month.

Articles should ideally consist of a half page of A5 or a full page of A5. Articles over these sizes or letters containing more than 500 words may be edited depending on space.

Copy submitted after the 8th may not be accepted but will, if deemed appropriate, be held over to the next month. We are happy to receive hand-written articles which ideally should reach us earlier than the 8th to allow for scanning etc.

Dates for the Diary must include date, event, venue and time.

Please submit all articles, adverts, letters and queries to the editorial team at:
elsenhamsnews@hotmail.co.uk

General Notes

Whilst every effort is made to ensure that information is correct, the editorial team cannot be held responsible for any inconvenience caused through errors or omissions.

The views expressed within this magazine are not necessarily the views of the editorial team or Elsenham Community Association (ECA).

The editors and the ECA can accept no responsibility for the goods or services advertised in the magazine. Advertisements are included in good faith. The editors reserve the right to allow replies to letters/articles to be made in the same edition when appropriate.

The editors' decision is final.

Wanted/For Sale items: individuals may submit short details of items wanted or for sale etc at no charge. These will be included in the next available issue of the magazine subject to space and acceptance by the editors.

Subscriptions

Elsenhams News is available by email (on a pdf) at no charge, or through the post at a cost of £13 per annum. Contact **elsenhamsnews@hotmail.co.uk**

Advertising

The costs are as follows:

	Single Insertion	Annual Cost (11 issues)
Half Page	£20.00	£190.00
Quarter Page	£10.00	£100.00
Inside Page	£50.00	n/a
Back Page	£75.00	n/a

Village organisations attract reduced rates, £5 for ¼ page. Half and full-page adverts attract full rates.

To place an advertisement:

For any queries, contact Nathalie. Please send your advert as Word or Publisher via email to **elsenhamsnews@hotmail.co.uk**

Advertising Editor: TBA

Business Advertising

Cheques should be made payable to "**Elsenhams Community Association**".

Editorial Team:

**Gary Williams
Emma Bailey
Marion Giles
Patricia Davis
Anne White
Nyaradzo Chabata
Angie Wenlock
David Newland**

Previous issues of Elsenham News are available on the ECA Website

UPCOMING EVENTS

Act of Remembrance Memorial Garden November 11
 Elsenham Christmas Market, Golf World Stansted November 25
 Wreath making workshops, Elsenham Memorial Hall December 1&3
 Christmas Tree Festival, St Mary's Church December 2&3
 Boxing Day Ramble December 26

VILLAGE CONTACTS

Airport Roadside Parking		0800 731 2385
Beavers	1sthenhamandelsenham@gmail.com	
Bowls Club	Therese Clear	816535 or 07759 158859
Brownies	elsenhambrownies@gmail.com	
Church Office (Old Frank's, High St, Elsenham)	Anna Hicks	814285
County Councillor (Stansted)	Ray Gooding	813103
Cricket Club	David Brown	831011
Cub Scouts	1sthenhamandelsenham@gmail.com	
ECA (Chairman)	Allan Hathaway	813385
ECA (Secretary)	Moyra Jackson	647351
ECA Website	www.ElsenhamCommunityAssociation.org.uk	
Elsenham Surgery	www.elsenhamsurgery.nhs.uk	814730
Elsenham C of E Primary School	Linda Todd Headteacher	813198
Elsenham Church PCC Secretary	David Hill	812397
Elsenham Rights of Way website	www.e-voice.org.uk/erowos/	
Friends of Elsenham School (FOES)	Louise Judd	foespta@hotmail.com
Guides elsenhamguides@gmail.com	Gemma Schafer	07792 572423
Henham & District Garden Society	Moyra Jackson	647351
History Society	Mike Rea evhs12@hotmail.co.uk	813634
Member of Parliament	Kemi Badenoch	0207 219 5214
Memorial Hall Bookings	Cheryl Rae	817834
Neighbourhood Watch Co-ordinator	Frances Lambert	07771 728332
	franceslambertnhw@btinternet.com	
Parish Clerk - Louise Johnson	louise.epc@gmail.com	07456 791727
Elsenham Parish Council Website	www.elsenham-pc.gov.uk	
Police		101
Post Office		812175
Rainbows	elsenhamrainbows@gmail.com	
Scouts	1sthenhamandelsenham@gmail.com	
St Mary's Fabric Fund	Elizabeth Barker	813543
Tennis Club	Petra Studholme	814667
Tots & Toddlers	Dawn Temple	07944 841358
Uttlesford District Councillors	Petrina Lees	816675
(for Elsenham & Henham)	Bianca Donald	07941 880279
Village Hall Bookings	elsenhamvillagehall@gmail.com	
Womens Institute Secretary	Gill Hathaway	813385
WI	Facebook	
Youth Football Club (Chairman)	Ricky Lambourne	info@elsenhamyfc.co.uk

If you would like your village organisation contact to appear regularly in the magazine, please contact one of the editors, see opposite for details.

THERE'S SO MUCH TO DO AT GWS!



TOPTRACER RANGE

**ADVENTURE GOLF,
FOOTGOLF, LESSONS,
GYM, EVENTS,
9-HOLES & MORE!**

NOW OPEN UNTIL MIDNIGHT FRIDAY'S & SATURDAY'S!



**Golf
World
Stansted**

Visit us now: Golf World Stansted, Hall Road, Nr Stansted Airport CM22 6FL
01279 812 865 bar@golfworldstansted.co.uk