

Elsenham News



Christmas Market
Elsenham
26 November 2021

elsenhamsnews@hotmail.co.uk

November 2022

75p where sold

Elsenham Village Regular Monthly or Quarterly Activities

Parish Council 1st **Monday** of month 8pm (excl. Bank Holidays) Memorial Hall

Natter Night 2nd **Monday** of the month from 7.30pm Bowls & Social Club

Village Café Coffee 1st & 3rd **Tuesday** 9.30 - 11.30am Memorial Hall

& 2nd & 4th **Tuesday** 9.30 - 11.30am Bowls & Social Club

Henham & District Garden Soc 1st **Tuesday** of month 2.30 - 4pm Memorial Hall

Community Choir 1st & 3rd **Tuesdays** of the month 7- 8.30pm Village Hall

Life Drawing 2nd **Tuesday** of month 7.30 - 9.30 Village Hall

Village History Society 1st **Wednesday** of month quarterly 7.45pm Memorial Hall

Church Lunch Club 2nd & 4th **Friday** of the month 12.30pm Memorial Hall

November diary

Tues 1 - 7	Poppy Door to Door Collection	
Tues 1 & 15	Village Café Coffee Morning	Memorial Hall 9.30 - 11.30am
Tues 1	Henham & District Garden Society	
Tues 1 & 15	Elsenham Community Choir	Village Hall 7pm
Sat 5	Bingo	Bowls & Social Club 7.00 for 7.30pm
Mon 7	Parish Council Meeting	Memorial Hall 8pm
Tues 8 & 22	Village Café Coffee Morning	Bowls & Social Club 9.30 - 11.30am
Tues 8	Life Drawing	Village Hall 7.30pm
Wed 9	History Society Meeting	Memorial Hall 7.45 for 8pm
Thurs 10	Elsenham Community Association General Meeting	Memorial Hall 7.45pm
Fri 11 & 25	Church Lunch Club	Memorial Hall 12.30pm
Sat 12	Act of Remembrance	Memorial Garden 10.45am
Sat 12	Tennis Club Quiz	Bowls and Social Club 7.30pm
Mon 14	Natter Night	Bowls & Social Club 7.30 for 8pm
Wed 16	District Councillor's Surgery	Orwell House, Station Road 2pm
Thurs 17	Elsenham WI	Memorial Hall 7.45pm
Sat 19	Bingo	Bowls & Social Club 7.00 for 7.30pm
Sat 26	Christmas Market	Village Hall 3-7pm

Elsenham Village Regular Weekly Activities

Day	Time	Activity	Location
Monday	9.30-10.30am	Zumba	Memorial Hall
	10.30am	Health walk	Start at De Mandeville Green
	7.30-8.30pm	Shape to the beat	Memorial Hall (not 1st Monday)
Tuesday	4.45-5.45pm	Rainbows	Memorial Hall (term-time)
	6-7.15pm	Cubs	Henham Village Hall (term-time)
	6-7.30pm	Brownies	Memorial Hall (term-time)
	7.30-10.30pm	Tennis Club night	Tennis Courts
	8pm	Fitness Yoga/Pilates	Memorial Hall
Wednesday	9.45-11.30am	Tots & Toddlers	Memorial Hall (term-time)
	5.30-7.30pm	Slimming World	Memorial Hall
	5.45-6.45pm	Beavers	Henham Village Hall (term-time)
	7-9pm	Scouts	Henham Village Hall (term-time)
Thursday	6-7.15pm	Cubs	Henham Village Hall (term-time)
	6.45-7.45pm	Jump Fit	Elsenham Village Hall
Friday	10-11am	Little Fishes	Memorial Hall (term-time)
	5.45-6.45pm	Beavers Group 2	Henham Village Hall (term-time)
Saturday	9am-12pm	Junior Football	Playing Field
	8.45-9.30am	Little Kickers Mighty	Village Hall (term time)
	9.35-10.20am	Little Kickers Junior	Village Hall (term time)



Mobile Library

**Every third Thursday stopping at Glebe End 11.50 am
to 12.20 pm**

November 10

CROFT TURKEYS



TRADITIONAL FARM FRESH BRONZE TURKEYS
FED WITH HOME GROWN CORN
TO ORDER YOUR OVEN READY TURKEY, PLEASE CONTACT:
CHRIS MIZEN
THAXTED (01371) 831033
MOBILE 07702048457
LOVES FARM, COTTERS GREEN, THAXTED, ESSEX

Elsenham Tennis Club Quiz Night



Saturday, 12 November 2022
7.30 for 8.00pm start
at the Bowls Club

Ploughman's Supper
Raffle and Licensed Bar

Bookings in advance to:
Petra Studholme 01279-814667
or even better: mail@elsenhamtennisclub.co.uk

£8 per head / brain and 8 per table please



ALSA WOOD FARM
CHRISTMAS TREES
alsawoodfarm.co.uk

OPEN FROM

THURSDAY 24TH NOVEMBER

Every day except Wednesday

★ OPEN 9AM - 4PM ★



FRESH, LOCALLY GROWN TREES

Choose and Cut, Ready Cut, Wreaths

Alsa Wood, off Alsa Street, Stansted CM24 8SX
alsawoodfarm@gmail.com

THE NEWS REPORT

From The Editors



The countdown to Christmas has started and there is plenty to look forward to in Elsenham. We have the village Christmas Market on November 26 and the Christmas Choir will be singing on various dates (see page 20).

Until then, life goes on as usual and our Neighbourhood Watch and Community Speed watch teams continue to do their best to keep us safe in our homes and on our roads (see pages 17 and 23 respectively).

It's great to see our new vicar has hit the ground running and we wish him success in his endeavours (see church article and diary pages 24 and 25).

We are, as always, grateful to those that keep us up to date with other matters that have a major impact on our lives: Development Developments (page 11) and our District Councillors (page 7) and Parish Councillors (page 9). We thank them all for their service and for doing their best to keep our village a wonderful place to live.

And service is the theme of our front cover. November 11 annually is a time when we should all reflect on the bravery and courage of those that give their all for us, particularly in light of current events in Ukraine.

WE NEED YOU! – Options Hair Design will be putting up a Christmas Tree again this year on the green outside the salon on the November 27. We will need help with this as the tree is big! 20ft tall and lots of decorations to be added.

If you would like to help (mince pies will be provided!) please call Ann on ☎ 07957 166436 or email on ✉ ann@h2d4.com

Regular features

District Council Report	7	St. Mary's Fabric Fund	27
Parish Council	9	Ray's Reflections	29
Development Developments	11	History Society	31
Elsenham WI	13	U3A	33
Elsenham WI	15	Natural Outlook	35
Neighbourhood Watch	17	100 Parishes	37
Daisy May's Farm	19	Bowls Club	39
Scouts	21	Tennis Club	41
Community Speed Watch	23	Cookery Corner	43
Church Calendar	25	Book review	45

Elsenham



**Christmas
Market**

26th November 2022

Elsenham Village Hall

3pm - 7pm

**Local businesses
supporting
local community**

**Organised by
www.waytoomanybricks.co.uk**

DISTRICT COUNCILLORS' REPORT

NOVEMBER 2022

By Cllr Lees and Cllr LeCount

✉ Cllrlecount@uttlesford.gov.uk

✉ Cllrlees@uttlesford.gov.uk

☎ 07836 346717

☎ 816675



Local Development Plan

We have some disappointing and unexpected news to report on this topic, although we think that you will already have some awareness of it. The local plan process is now regrettably paused while the evidence already assembled is being cross checked and verified, which means that there is some delay in progressing to the next consultation phase, publication of the Regulation 18 draft Plan, which was expected to commence on 2 November 2022.

This has come about as a result of a fresh appraisal of the work undertaken to date by a very recently appointed senior Planning Policy officer with substantial experience of guiding during his career draft local plans successfully through examination and approval, including in particular in rural areas.

He considered and advised that some work needed to be better coordinated and sense checked before going out to public consultation. He believes that the manner in which officers have been working post COVID, i.e., remotely from their homes, has led to a somewhat disconnected approach adopted to the presentations and evaluations needing to be made properly. So, coordinated team working has not been as effective as it should have been.

Planning Enforcement

This is progressing well and almost 800 cases with existing enforcement notices have been reviewed to ensure they are compliant with all relevant regulations and will then be placed on the register which will be open to public inspection. Due to GDPR the only enforcement cases that the public can access on the website are those where there are existing enforcement notices. The enforcement officers remain active on new matters and so far, this year have opened 141 new cases while closing 134. A performance report on planning enforcement is due to be published for the Planning Committee in October and we will report further as to this next month. Elsenham has had a spate of soil transference and we have closed them, though unfortunately the wheels of governance turn too slowly for us to act with real haste.

Uttlesford Budget 2023/24

In these times of considerable economic hardship, Uttlesford DC is particularly keen to obtain the views of residents and the business community as to the major economic matters of concern to them, including what they see as priorities for spending by the Council.

Members' Initiative

We have supported the table tennis club in Henham with the purchase of a table and wish the club good fortune in upcoming matches in the Harlow League. We have also contributed to the new toilets in the Memorial Hall. We welcome applications to support local initiatives in the ward.

Our Surgery is Wednesday November 16 at 2pm, Orwell House, Station Rd, Elsenham CM22 6LA. As always, we are available to have a meeting with any of our residents via telephone, email and zoom.



*Everyone
Welcome*

HENHAM
Christmas
• MARKET •

FRIDAY 11th NOVEMBER
1pm to 8pm

Held in two halls for twice the shopping experience

**OSCA Hall &
Henham Village Hall**

£1 donation at entry will see you into both halls for
double the shopping and double the festivities

All proceeds go to Bowel Cancer UK

•Stalls available include•

*Home & Lifestyle, Candles, Chocolates, Jewellery,
Cards, Soaps, Christmas Decorations, Jams/Chutneys,
Handbags & Accessories, Stitched Items and many gift ideas.*

*Thank you to Supporters:
Intercounty, Prontaprint, and Optoelectronics*

ELSENHAM PARISH COUNCIL OCTOBER 2022

By Louise Johnson, Clerk. ✉ louise.epc@gmail.com ☎ 07456 791727



A one-minute silence was held in memory of Queen Elizabeth II. 21st April 1926 - 8th September 2022.

The Parish Council welcomed a new member, Cllr. Paul Jarvis.

Elsenham has a problem with Fly Parking, which is causing obstructions and distress for residents. District Cllr. Garry LeCount said he would arrange with Stansted Airport for the instalment of 'No Airport Parking' signs. The signs are not enforceable but do act as a deterrent.

The War Memorial in Church Lane, dedicated to the men of Elsenham who lost their lives in WW1, has still not been repaired. This was damaged by lorries taking soil into the adjacent field. The Parish Council has contacted the landowner several times and despite assurances that it would be repaired, still nothing has been done. The Parish Council will write again asking for assurances that the War Memorial will be repaired before Remembrance Day, 11 November 2022.

The deadline for responding to the planning application for 130 houses opposite the Crown public house has now passed. There were 80 representations from members of the public. EPC employed a planning consultant, Alison Hutchinson, who prepared a report objecting to this application including an argument that has not been raised before. EPC also employed a traffic consultant, Simon Watts, who prepared a report objecting to the application on grounds of traffic and lack of infrastructure.

It was decided at a recent playing field meeting to try to get the young people in the village, who use the teen shelter, to take more ownership of it. Hopefully, this would encourage less litter being left and less anti-social behaviour. If you have any ideas, please contact the Parish Clerk.

The new play equipment in the children's play area will hopefully be installed before Christmas. Look out for the pirate ship!

Uttlesford District Council has paused the work on the local plan again. This is bad news for Elsenham and the surrounding villages as it gives developers a free hand. The District Council had been intending to begin the major round of Regulation 18 public consultation and engagement on 3 November 2022. This has been cancelled and a new timetable is being prepared.

The History Society has cleaned the red telephone box on the corner of Station Road and New Road. Inside you will find historic photographs of Elsenham, so please have a look.

The next Parish Council meeting will be Monday 7 November at 8pm in the Memorial Hall. All residents are welcome.



Double Glazed Units – SAME DAY

- Table Tops
- Shelves
- Emergency Glazing
- Replacement Misted Double Glazing
- Greenhouse Glass
- Cat and Dog Flaps Fitted
- Splash Backs – Any Colour
- Glass Cut To Size
- Emergency Boarding
- Safety Glass
- Mirrors

LOCAL COMPANY – GREAT PRICES – RELIABLE PROMPT SERVICE

Elsenham – Great Dunmow – Bishops Stortford - Stansted

01371 868434
 info@capitalglaziers.com - www.capitalglaziers.com

**S. PERRY
 CHAPEL END NURSERY**

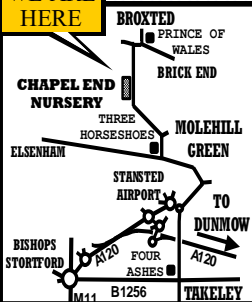
**WINTER PANSIES, WALLFLOWERS, SPRING BULBS
 Mr FOTHERGILLS SEEDS
 BUY 5 PACKETS GET CHEAPEST PACKET FREE
 ALPINES HERBACEOUS & HERBS, STAKES, TRELIS, OBELISKS**

**WATER SOFTENER
 SALT TABLETS 25kg
 £12.50EACH**

**HORTICULTURAL GRIT
 COLOURED GRAVELS
 PEBBLES COBBLES**

**GODWINS
 MULTIPURPOSE COMPOST
 60 Litre Bag
 £7.25 EACH 3 For £18.50**

**WE ARE
 HERE**



**WOODEN
 HALF BARRELS
 TUBS AND POTTERY**

**OPEN 9am to 5 pm
 MONDAY TO SATURDAY (CLOSED SUNDAYS)
 MOLEHILL GREEN ROAD
 BROXTED DUNMOW ESSEX CM6 2BW
 01279 850771**

www.chapelendnurserysperry.co.uk

**VEGETABLE PLANTS
 BASKET & TUB PLANTS
 ALPINES
 HERBACEOUS
 HERBS
 ROSES
 SHRUBS
 POND PLANTS
 AQUATIC COMPOST
 GODWINS COMPOST
 WILD BIRD FOOD
 SUNDRIES**

DEVELOPMENT DEVELOPMENTS

By *Graham Mott* ☎ 812516 ✉ motts@grahammott.plus.com



The application by Countryside for 130 homes off Henham Road, in the field opposite the Crown, is now before the Planning Inspectorate. Uttlesford District Council has the status of consultees, having been 'designated' by Government for major applications. UDC's Planning Committee considered their response at the meeting on 28 September. Members rejected the planning officer's unsurprising recommendation of approval and agreed unanimously to make several objections: lack of access to other consultees' reports; the impact on heritage assets; the siting of the single point of access, with a recommendation that the Inspector visits the site during school rush hour; the cumulative impact (the message has at last got through to UDC that Elsenham has had a vast amount of new housing in the last ten years). Elsenham Parish Council has engaged planning and transport consultants, who have produced a first-rate report, and there were 80 objections from members of the public. If you objected, it is worth checking that the Planning Inspectorate has published your representations - check at (deep breath):

<https://www.gov.uk/guidance/section-62a-planning-application-s62a220007-land-to-the-south-of-henham-road-elsenham-essex>

and email if necessary to: section62a@planninginspectorate.gov.uk

It would be a mistake to be optimistic as to the outcome, principally on account of UDC's continuing failure to make a Local Plan, which resembles the pot of gold at the end of the rainbow - the nearer you seem to get to it, the more it recedes out of reach. Now it is as if the rainbow itself has disappeared and storm clouds are gathering without a hint of sunshine to alleviate the gloom. The timetable has been put back three times (or is it four?) already this year. The latest proposal is yet another delay in the initial 'Regulation 18' consultation, this time all the way until after the local government elections in May 2023. In other words, the last Local Plan was rejected at the end of the previous administration's tenure; the new one won't be considered until after the next administration takes office. The rationale refers to 'the late discovery of the consultation document's unreadiness', as if explorers needed to hack their way through unfamiliar territory before UDC knew what was happening. They are short of staff, or, to put it another way, no-one wants to work for them.

Also delayed is the consideration by UDC's Planning Committee of Dandara's detailed application for 99 homes, off Isabel Drive and off Stansted Road, which was postponed late in the day, ostensibly on account of the lack of a report from one of the statutory consultees - which hadn't prevented UDC's planning officer from recommending approval.

Bovis Homes' name for their site off Hall Road is Elsenham Brook. They promise that new homes will be available from Summer 2023. The Parish Council is interested in the provision that the first half of their contribution to the new Community Hall should be made before they start construction work.



Pike's Plumbing & Heating

Whether you're looking for a plumber or heating engineer, Pike's Plumbing & Heating can help.

If it's an emergency, simple problem or you're just thinking about a new boiler or bathroom give me a call – I'm available when you need me 24/7. Now's a good time to think about servicing your boiler too and make sure you're not left out in the cold! No Call-Out Charges & Free Quotations

Tel: **07889 140035**

Craig Pike

Email: info@pikesph.co.uk



Web: www.pikesph.co.uk

01279 871 777 - 0800 587 2556

6 Newman Road, Little Canfield, Dunmow, Essex, CM6 1GR

MEDIACOMS

Aerial Satellite AV Security

- Aerial Installations
- CCTV & Security Alarms
- Audio Visual Installations
- Wireless & Wired Networks
- Solar Panel Installations
- Sky Installations & Subscriptions
- Freesat Installations & Receivers
- Multiroom Music & TV Distribution
- TV Wall Mounting Services
- Family Run Business



www.mediacom.com

info@mediacom.com

ELSENHAM WOMEN'S INSTITUTE

By Moyra Jackson ☎ 647351



Summertime in this country is sprinkled with social events that make it quintessentially English – Ladies Day at Ascot, Glastonbury, The Countess of Wessex Show and the Proms. Elsenham also has its own Summer calendar - The Village Fete, The Flower Show and the WIs Posh Frocks and Hats Garden Party!

Due to the very changeable weather forecast this year's Garden Party was held in the Memorial Hall rather than in one of our member's garden. We had an excellent turnout and the Hall looked lovely with bunting and garden flowers and our members all scrubbed up



very well! The weather was kind to us on the day and we were able to take advantage of the garden at the Hall. There was a fabulous table of gastronomic delights and lots of fizz and assorted drinks to wash it all down.

Our natter nights are changing days, moving from Tuesdays to Mondays – please check updates on social media from Barbara for the dates if you miss the information at our meetings.

Our last meeting was one of those meetings as a president that you dread – the meeting where you find out a couple of hours before it starts that the speaker has had to cancel. In true WI style we stayed calm and carried on with a quiz our Secretary Gill always has 'just in case' and an extra long social time. By the end of the meeting we all forgot our initial disappointment especially when the speaker has offered to come next year and waive their fee!

This month's meeting is the wonderfully talented Lindsey Dixon Barrell Rom who will teach us the basics of British Sign Language. Those of you who were at this year's County Annual Meeting would have seen Lindsey 'signing' Jerusalem for us. The quiz is 'A Quirky Sign'.

While we are very proud of our Jam and Jerusalem traditions, Elsenham WI is so much more than that and we are always happy to dispel any stereotypes associated with the WI. Why not come along (or come back) – visitors and new members are always welcome.

Details of our programme, events and activities can be found on Facebook, Twitter and Instagram – search for Elsenham WI. Visitors are welcome to our monthly meetings so please come along. We meet at 7.45pm on the third Thursday in the month in the Memorial Hall.

Elsenham WI – There's a lot going on!



Collector, collator and
relator of life's special
events

Are you planning or considering: a Memorial Service, a Funeral,
Renewal of Vows, a Wedding or a Naming Celebration?

A Celebrant led ceremony will help you
to create special memories of the day.

For more information please contact:

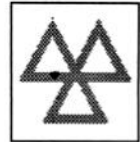
janetterickwood_celebrant@btinternet.com

www.janetterickwoodcelebrant.co.uk ☎ 07889 375200

Facebook @JRCelebrant

GARRETT'S GARAGE SERVICES

42 Golds Business Park, Elsenham
Bishop's Stortford, Herts CM22 6JX

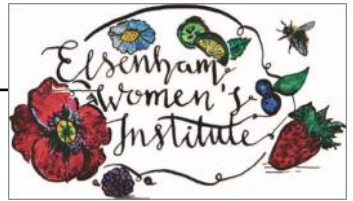


- Mechanical Repairs
 - Servicing
 - Tyres
 - Engine Tuning
 - Computer Diagnosis
 - Windscreen Repairs
 - M.O.T.'s - Catalyst & Diesel Tested
 - E.H.D.C. - Authorised Hackney Carriage Testers
 - Batteries
 - Exhausts
- MODERN WELL MAINTAINED WORKSHOP*
- ALL MAKES OF VEHICLE*
- *FREE COLLECTION AND*
*DELIVERY SERVICE**

TEL: 01279 647777 FAX 01279 817622

ELSENHAM WOMEN'S INSTITUTE

By Moyra Jackson ☎ 647351



Autumn is most definitely here and it feels like winter will follow close on her heels now that the clocks have changed. How wonderful our village looks with the trees changing from green to wonderful yellows, oranges and reds.

We have had a busy month. We had a Dames Who Dine at The Three Willows in Birchanger which was well-attended as always, with lots of putting the world to rights! Natter Nights are going well in their new Monday Night slot at the Bowls Club. Our Bookworms continue to read, with all enjoying Pretty Things by Janelle Brown. The next book will be Still Life by Sarah Winham.

Every year our programme contains an item known as 'Members Day'. This is the meeting where, rather than the Committee taking care of business, we hand over to a group of members who do everything from choosing the speaker or activity, doing the refreshments, setting up the hall and running the meeting. This year Lynda Bowcock and Lynda Jolly led a team of fabulous members and gave us an excellent evening. The speaker was the excellent Dorothy O'Grady who demonstrated how everyday items could give us beautiful 'Ways with Wrapping'. What a fabulous evening we had. Many thanks to the Lyndas and their team for all their hard work.

This month's meeting is 'Big 7 Christmas Tasting' with C & M Distilling. Charles & Mike Distilling Ltd are a small batch craft distillery from Dunmow. The competition is 'Favourite Christmas Cocktail' – one to look forward to!

While we are very proud of our Jam and Jerusalem traditions, Elsenham WI is so much more than that and we are always happy to dispel any stereotypes associated with the WI. Why not come along (or come back)? Visitors and new members are always welcome.

Details of our programme, events and activities can be found on Facebook, Twitter and Instagram – search for Elsenham WI. Visitors are welcome to our monthly meetings so please come along. We meet at 7.45pm on the third Thursday in the month in the Memorial Hall.

Elsenham WI – There's a lot going on!

WE NEED YOU! – Options Hair Design will be putting up a Christmas Tree again this year on the green outside the salon on the November 27. We will need help with this as the tree is big! 20ft tall and lots of decorations to be added.

If you would like to help (mince pies will be provided!) please call Ann on ☎ 07957 166436 or email on ✉ ann@h2d4.com"

D BONNEY & SONS MANUDEN MOTOR VEHICLE ENGINEERS

MOT TESTING

ALL MAKES OF VEHICLES SERVICED INCLUDING FOUR WHEEL
DRIVES

TRW BRAKE CENTRE

DIAGNOSTIC AND FAULT FINDING

WELDING AND CHASSIS REPAIRS

SELECTION OF USED CARS

CALOR GAS STOCKIST

WE HELP YOU THE MOTORIST WITH A CHEAPER LABOUR RATE

GUARANTEED WORKMANSHIP

FREE COLLECTION AND DELIVERY IN LOCAL AREA

PLEASE RING: MALC, NEIL OR CRAIG

 **01279 813315 OR**  **01279 815946**

NEW BEGINNINGS COUNSELLING

A safe environment to explore your thoughts and feelings

A private practice with parking based in Takeley

Represented by Michele Simpson MBACP

Ever felt sad, overwhelmed, lost or just not quite right? Most people at some point in their lives have felt so overwhelmed that they find it impossible to see a way out of a situation.

My beliefs are that everybody has the resources within themselves, given the right environment, to experience therapeutic change. Give me a call to see how I can help you to improve your life.

Counselling could enable you to have that new beginning

phone: 07956 224954 or 01279 879009

email: ms@newbeginningscounselling.co.uk

www.newbeginningscounselling.co.uk



**Advertise your
business in Elsenham
News**

**Contact us at
elsenhamnews@hotmail.co.uk**

NEIGHBOURHOOD WATCH

By Frances Lambert ☎ 07771 728332



“A friend in need” scam is targeting **WhatsApp** users. Criminals are posing as friends or family members in need of help. They will text from what they claim to be a new mobile after their old one was ‘lost/damaged’.

There is to be a new **Omicron Covid vaccine**, as the UK become the first country to approve the specifically tailored jab, With the rollout for the latest booster, there are concerns that covid related fraud may increase as a result, with criminals targeting potential victims with vaccine scams.

Energy Price Cap: This will be an area which will continue to be monitored. With the severe increase in the energy price cap reported, fraudsters are likely to seize this opportunity to exploit those looking to change energy provides and/or tariffs. Individuals are being warned to be vigilant to avoid falling victim to new campaigns associated with energy supplies, for examples offers which seem too good to be true or fake rebates.

Lots of people online have been flagging a fake **Santander** mobile banking email. The email impersonates Santander’s branding and gives you a sense of urgency regarding your access to banking services, to pressure you into giving away data. Over the past week, use of the search term ‘Santander email scams’ has increased by more than 5000%, showing the spike in people being targeted with this new scam.

Scammers are impersonating **British Gas** with fake emails tempting recipients to click a link to get a fake energy refund. Although the email looks legitimate, it addresses you by your email address and not your name. This is a potential giveaway that it’s from a fraudster. Know what to look out for.

Premium Rate Number Scams: This scam tries to trick people who are searching online for telephone numbers of government advice services. It works by displaying an advert for the phone number of the relevant government advice line. But the sting is that you’ll be charged a premium for using this advertised telephone number – in some cases, as much as £20 or £30 a call.

If you have any information regarding incidents contact Essex Police on '101 or Crimestoppers anonymously on ' 0800 555 111.

GARDEN HINT

Cover your hellebores with a cloche for earlier New Year flowers.



- alun
- design
- consultancy
- architectural design
- planning
- project management
- interior design

Local architecture company with over 25 years experience designing and obtaining approval for new homes, extensions and conversions

Free consultation
01799 540 600

info@alundesign.com

www.alundesign.com

Neville House, Station Road,
Wendens Ambo, Saffron
Walden, Essex, CB11 4LB

DANIEL ROBINSON & SONS

Independent Family Funeral Directors & Monumental Masons

Est 1892

Always here when you need us...

- Arrangements in the comfort of your own home, if preferred
- Private Chapel of Rest
- Pre-paid funeral planning services
- Traditional & contemporary funerals to suit your wishes



79/81 South Street
BISHOP'S STORTFORD
01279 655477

www.drobinson.co.uk



Daisy May's Farm

Hall Road, Elsenham, CM22 6DN

Well, what a fantastic year this has been for us! The best bit has been having all our lovely visitors come to see us on the farm.

We are starting to get very excited about Christmas and really hope that you will be joining us for the festivities this year; there will be so much to do. Last year, as Father Christmas was so busy, Mrs Claus came to stay with us and she read traditional yuletide stories to the children whilst they enjoyed yummy hot chocolate. She had gifts for them too! The children were also able to enjoy Christmas crafts, a snowy walk through the Winter Woodland and, of course, the animals had to have a fuss made of them too.

Make sure you keep an eye on our Facebook page so that you can book and don't miss all the fun!

All our animals are always so happy to see you. We still have some small piglets that are so cute but very cheeky! At the moment there are sheep, goats, ponies, all sorts of chickens, ducks, turkeys, pheasants and even some owls. Don't forget the rheas (similar to ostriches), rabbits and guinea pigs, they **all** love to see our visitors!

These events are a vital lifeline for us to raise enough funds to feed and look after our animals. We can only do this with your help and support.

We **always** need help in so many ways, particularly when there is **so** much to do. So if you have a little time to spare, **please** get in touch, we would **love** to hear from you. Please contact ☎ 07747 787973 or take a look at our website 🌐 www.daisymaysfarm.org to find out more. Thank you so much.



ST MARY'S FABRIC FUND ELSENHAM
Registered Charity No 1052884
By David Hill ☎ 812397



Preparations are afoot for this year's Christmas Tree Festival. Application forms are being distributed and several other projects are under way. If you would like to enter a tree, need more information or feel that you are able to help with organisation or running, please contact Jill (01279 812397) or Elizabeth (01279 813543).

May we thank you in advance for your support!

Options Hair Design and Hair Loss Clinic

An essential choice with a passion for hair

We welcome you with a complete in-depth consultation, whether this is for a change of style or colour or for more clinical advice on the health of your hair and scalp.

For clients visiting The Hair Loss Clinic we are able to offer a completely private consultation and treatment room away from the main salon. We offer proven treatments for hair loss and also provide a complete wig fitting and finishing service. We work closely with a leading UK Trichologist who holds regular clinics with our clients.

Our products are organic and formulated to enhance your hair health. Our dedicated stylists will work with you to achieve the look and feel that you want. Our salon has parking right outside and a warm welcome awaits you.

Elsenham Salon 01279 812665

Bookings not always necessary

Hair Loss Clients please call Ann on
07957 166436

www.optionssalon.co.uk



S.D.S
INSTALLATIONS

SDS Installations Ltd

AERIAL AND SATELLITE SERVICES
FOREIGN SATELLITE SYSTEMS - CCTV - EXTRA TV POINTS - SKY LINK UPS
PHONE POINTS - HOME SIGNAL DISTRIBUTION - WALL MOUNTED PLASMA/
LCD SCREENS - CABLES SUPPLIED AND HIDDEN

Alan Smith
50 Sunnyside
Stansted
Essex CM24 8AX

01279 279012
07771 881042
sdsinstallations@hotmail.com
sdsinstallations.com

Taylor Computer Services (Stansted)

On-site Computer Maintenance/Repairs

DON'T BE RESTRICTED TO OFFICE HOURS, I CAN VISIT YOUR HOME OR OFFICE DURING THE DAY, EVENINGS OR WEEKENDS AT A TIME TO SUIT YOU.

Email and Broadband Setup, Data Transfers/Data Recovery, Hardware & Software Installation, Virus & Spyware Removal & Protection, New PC Setup & Training

Call Derrick on 01279 816418 ~ 07926 289749
Email: Info@tcsstansted.co.uk

By Matthew Morland

☎ 07423 620120

✉ 1sthenhamandelsenham@gmail.com



We have been lucky to welcome more new Beavers, Cubs and Scouts to our Group for the start of the Autumn term. With new members completing their Membership Badge requirements they are being invested into our Group by making their Scout Promises and being given their famous Scout scarf and woggle.



Our Scouters have been taking part in more exciting activities planned by our volunteer leaders, with Beavers making (very messy) biscuits, planting flowers, taking part in a magic night, working on their Communicator Activity Badge and attending the "Beavers in Tents" activity day. Our Cubs have hiked around the villages, baked mystery cakes, taken part in a treasure hunt around Henham and held a games night to help build teamwork and teambuilding skills, while our Scouts have been working on advanced navigation skills, preparing route cards, practised compass skills, and taken part in a night hike. Some of our wonderful Young Leaders also took part in the County Marathon navigation expedition in the Peak District.

Our Sections also took time to reflect on the life of Her Majesty Queen Elizabeth II, following her passing. Her Majesty became Patron of The Scout Association on ascending to the throne in 1952 and gave her name to our highest award - The Queen's Scout Award. Her Majesty embodied the spirit of Scouting and was a role model for the values of voluntary service, kindness, and courage. Her passion and devotion to the Scout Movement was evident through public appearances at Scouting events, describing Scouting as "A global force for good. In the UK and around the world, Scouts are helping others and making the most of their lives."

It is in this spirit that our volunteers continue to actively engage and support young people in our community, empowering them to make a positive contribution to society.



A reminder that our Scout Group will be supporting the Royal British Legion this year by selling poppies door-to-door and collecting donations during the first

week of November, so please do have your donations ready when our Beavers, Cubs and Scouts come knocking!

EAT, DRINK & HIT BALLS



TOPTRACER

DRIVING RANGE!

CELEBRATE AN EVENT WITH US TOO!
SUITABLE FOR ADULTS & CHILDREN

SEE OUR WEBSITE FOR OUR COVID-SAFE PROCEDURE
Golf World Stansted, Hall Road, Nr Stansted Airport, Essex, CM22 6FL
01279 812 865 | leanne@golfworldstansted.co.uk



Binwash
We clean your wheelie bins!
Commercial & Domestic



Monthly Cleaning from just £4.50!

Professional equipment
Same day as waste collection

www.binwash-uk.com
01799 529899
enquiries@binwash-uk.com

BMH

WINDOW CLEANING
CHERRY PICKER HIRE
(12.5M)

Window Cleaning
Gutter Cleaning
Commercial Window Cleaning
Excellent Rates
Professional & Trustworthy
Fully Insured
References on request
07852 722139

"Get rid of the grime with a Tony shine"

ELSENHAM COMMUNITY SPEED WATCH

By Frances Lambert ☎ 07771 728 332



“SPEED CAN KILL”.

HOW CAN YOU HELP?

Join the **Elsenham Community Speed Watch Team**

This is a good opportunity for Elsenham residents to increase road safety in the village, and reduce road collisions and injuries.

Our village is becoming a race track.

Talk is not enough – your action is required to become part of this major village speed initiative. We need more volunteers for the **“Elsenham Speed Watch Team”**

Full initial training will be given by Essex Police and then just a few hours a month operationally, when you are available.

There is NO weekly or monthly commitment

Are you interested? Or need more information?
Contact Call – Frances Lambert ☎ 07771 728 332

ST CLARE HOSPICE

Elsenham Seniors raised an incredible £1,357 at their Golf Day in aid of St Clare Hospice on Thursday 15th September. This amazing sum of money will go towards their specialist, compassionate palliative care for local people living with a life limiting illness in West Essex and East Herts.

Ellie Gale, Community Fundraiser at St Clare Hospice, stated: “It’s lovely when people approach us and host events in aid of the Hospice. Whether they have a personal connection to the Hospice or not, it really is touching that so many people want to support us especially as it means we’re able to help more families in need of our care.”

The day was a huge success with special thanks to those on the organising committee, Mike Sell, Dave Belton, Frank Corr, Kevin Ford and Brian Bates.



ST MARY'S CHURCH ELSENHAM

Office@heuchurch.co.uk

Thought For The Month by *Louis Wilson*

Autumn is unmistakably in the air and with it the season of remembrance made more poignant than ever by the absence of Queen Elizabeth II.

A few years ago, I visited the Tyne Cot Cemetery at Passchendaele in Belgium, as well as some of the D-Day landing beaches in Normandy.

Tyne Cot contains a staggering 12,000 graves, as well as recording the names of 35,000 British and Commonwealth soldiers missing in action as a result of the Battle of Passchendaele in 1917. It is the largest Commonwealth War Graves Cemetery in the world. When Tyne Cot was opened in 1922, King George V marked the occasion with these words:

"We can truly say that the whole circuit of the Earth is girdled with the graves of our dead. In the course of my pilgrimage, I have many times asked myself whether there can be more potent advocates of peace upon Earth through the years to come, than this massed multitude of silent witnesses to the desolation of war."

A better reflection of the appalling tragedy of war you could not find, but just a generation later, there was sadly more to come. At the Canadian Juno Beach Museum in Normandy, I came across some other very striking words. At the outbreak of WWII, the Canadian Prime Minister was William Mackenzie King. This is what he broadcast to the nation to explain Canada's entry into the war:

"The Nazi doctrine of force is the very antithesis of what one finds in the Christian gospel. If it prevails there will be, as I see it, an end to our Christian civilization. It will prevail, unless men

are prepared to sacrifice their lives in opposing it.

The time has come when to save our Christian civilization, we must be prepared to lay down our lives for its preservation. The young men who are enlisting in our forces today, to serve on land, on the sea and in the air, are first and foremost defenders of the faith. Like others who have gone forth to battle in the past, they are placing their lives at the service of King and country."

It is an astonishing speech. As someone else has written, by today's standards, the words would be considered politically incorrect. But if you have read any accounts at all of what the Nazis and their sympathisers inflicted upon the Jews and other minorities of Central Europe, I'm afraid it is hard to disagree with the Canadian Prime Minister.

George V was right. War is desolation and we are to be passionate advocates of peace. But occasionally the other King (Mackenzie) is right: to do nothing is worse. Fortunately for us, the Lord Jesus Christ did not do what was politically correct, nor did he do nothing.

As Hebrews 13: 12-13 puts it: And so, Jesus also suffered outside the city gate (that is, the place of rejection) to make the people holy through his own blood. Let us then, go to him outside the camp, bearing the disgrace he bore.

We will be marking Remembrance on Sunday 13 November. Do join us.

CHURCH EVENTS IN OUR VILLAGES NOVEMBER 2022

Church Services

St Mary's, Elsenham 08:45

Sun 6 BCP Morning Prayer
Sun 13 BCP Morning Prayer
Sun 20 Joint Benefice Service at
Henham, 10:30
Sun 27 BCP Holy Communion

St Peter's, Ugley 10:00

Sun 6 BCP Holy Communion
Sun 13 Morning Service
Sun 20 Joint Benefice Service at
Henham, 10:30
Sun 27 Morning Service

Elsenham Village Hall 10:15

Sun 6 Morning Service
Sun 13 Morning Service
Sun 20 Joint Benefice Service at
Henham, 10:30
Sun 27 Holy Communion

St Mary's, Henham 11:15

Sun 6 Holy Communion
Sun 13 Morning Service
Sun 20 Joint Benefice Service 10:30
Sun 27 Morning Service

St Mary's, Henham 18:00

Sun 6 Sunday@Six
Sun 13 Sunday@Six
Sun 20 Sunday@Six
Sun 27 Sunday@Six

Events

Act of Remembrance

Saturday 12th November, 10.45am
Elsenham Memorial Gardens,
followed by refreshments at Elsenham
Memorial Hall.

Ladies' Pudding Evening

Wed 30th November, 7.30 for 8.00pm,
OSCA, Henham. 'Countdown to
Christmas'. Wine, cheese, delicious
desserts and Christmas crafts making.

Book your place via
office@heuchurch.co.uk

Other Regular Events

SUNDAYS:

St Peter's Junior Church

St Peter's, Ugley 10.00am
Sundays: 6th, 13th, 20th & 27th

Elsenham Sunday Club/Explorers
(Y1-Y6) Starting in service at Elsen-
ham Village Hall at 10.15am:
6th, 13th, 20th & 27th

Henham Sunday Club/Explorers
(Reception-Y5) Church Hall, Henham
11.00am Sundays: 6th, 13th, 20th & 27th

Pathfinders (Y6-Y9)

St Mary's, Henham 6.00pm - leave
from service to meet in OSCA
Sundays: 6th, 13th, 20th & 27th

Crammin' (Y10-Y13)

St Mary's, Henham 6. - leave from
service to meet in the Church Hall,
Henham. Sundays: 6th, 13th, 20th & 27th

MID-WEEK AND SATURDAY:

Start the Week with Prayer

Church Hall, Henham 9.30am
Mondays 7th, 14th, 21st & 28th

Seekers After School Bible Club

(Y3-Y4) Old Frank's 3.20pm
Mondays: 7th, 14th, 21st & 28th

Christian Play (Y1-Y2)

Rowan House, Elsenham 3.15pm
Tuesdays: 1st, 8th, 15th, 22nd & 29th

Little Fishes Pre-School Group

Church Hall, Henham 10.15am
Thursdays: 3rd, 10th, 17th & 24th

Little Fishes Pre-School Group

Elsenham Memorial Hall 10.00am
Fridays: 4th, 11th, 18th & 25th

Church Lunch Club

Elsenham Memorial Hall 12.30pm
Fridays: 11th & 25th

CAN YOU HELP?

We are looking for help with delivering *Elsenham News* to Fullers End in particular but also to cover holidays around the village, could you help with that?

Each month you would have a bundle of 20-30 magazines dropped off for delivery that week-end. Sometimes, we need help to cover for holidays too. This would not be every month and I would contact you as and when you are needed.

If you think you could help with either of these, then please contact Chris Bowker,

elsenhamsnews@hotmail.co.uk

 01279 815222

JOHN COLEBY

Experienced Interior and Exterior Decorator

For a friendly, reliable service please telephone

01279 815510 or 0793 9070818

for a free estimate



T.J. Patmore
Building Services

Extensions – Loft Conversions
Roof work – Carpentry – Roof Tiling
First and second fix carpentry
Kitchen fitting
Built in wardrobes
Decorating interior and exterior
Floor and wall tiling
Fencing – Decking – Patios
Supply and fix u.p.v.c. windows
House maintenance

*Call Trevor for friendly help, advice
and FREE estimates*

mob 07932 666224



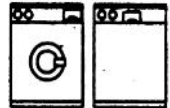
ANGLIA 
ELECTRICS

Established 1972

Domestic Appliance Repair Service

We offer Specialist Dishwasher,
Refrigeration & Cooker Service, in addition
to our long established and renowned
Washing Machine Service

Our Engineers are
Experienced and
Trained to service
most makes



01279 658767

Friendly Prompt Service

Gordon Barker



Gordon Barker was a founder member of St Mary's Fabric Fund set up in 1996 – in fact it may not be too much to say the Fund may not have existed without him.

The purpose was to raise money for the upkeep and restoration of St Mary's Church Elsenham. He was passionate about our beautiful early Norman Grade 1 listed church, and had a wealth of knowledge about its history and the people connected with it.

Over the years Gordon raised large amounts of money from his Village Slide Shows, which showed the church, village and villagers in past times. These were presented to enthusiastic audiences in the Village Hall, which was always packed to capacity. He kept us all enthralled by his remarkable memory of dates and individuals.

Gordon also wrote books on the history of St Mary's Church, kindly donating all proceeds to St Mary's Fabric Fund.

In 2009 Gordon's research discovered that St Mary's was constructed in 1110, and the 900th anniversary of worship in the church was imminent. He suggested that the Fund organise an event to mark the occasion. His initial suggestion was eagerly taken up by the committee and expanded to 14 separate events spread throughout the year, starting and ending with the now traditional Christmas Tree Festival, which lives on today. One of the events was a "Medieval Day", and anyone who was there could not forget his appearance dressed as a Knight Templar!

The Fund will always be grateful to Gordon for inspiring interest in the church, which he loved so much.

Gordon's Memorial Service will be held on Tuesday 8th November 11.30 am at St Mary's Church. It was his wish that any donations in his memory be given to St Mary's Fabric Fund.



hpc (State Registered)
Chiropodist

CH09088

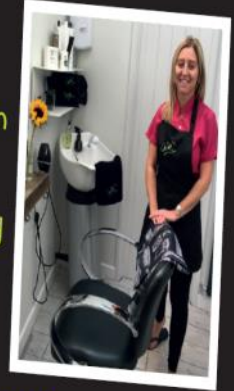
Home Visiting Practice

Mrs. Julie Golden
Est. 1994
01279 873492

A professional service at a competitive rate

Clare's *gents hairstylist*
@ Rickling Green

- ★ Appointments from 7am Mon-Sat
- ★ FREE easy parking
- ★ Fully qualified & insured



Call: 01799 542424
Text: 07791 058406

City & Guilds
Qualified 

**TAKELEY IRONING
&
DRY CLEANING**

OPENING TIMES
MONDAY - FRIDAY 8AM - 5PM
SATURDAY 8AM TO 12PM

FREE LOCAL COLLECTION & DELIVERY TO YOUR DOOR

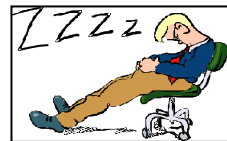
Takeley, Elsenham, Henham, Stansted, Felsted, Hatfield Broadoak, Hatfield Heath, Sheering, Dunmow, Sawbridgeworth, Broxted, Spellbrook, Molehill Green, Broxted, Little Canfield.

- ✓ WASHING & IRONING
- ✓ IN HOUSE DRY CLEANING
- ✓ 48 HOUR SERVICE
- ✓ DUVETS
- ✓ CURTAINS
- ✓ ALTERATIONS
- ✓ WEDDING DRESSES

The Centre, Dunmow Road (Behind Londis)
Takeley, Bishops Stortford
Herts, CM22 6SH

Email: takeleyironing@gmail.com
takeleydrycleaning@gmail.com

Tel: 01279 871245



Village Shop Part 2

To continue from the previous reflections on “Buttle’s Shop.” What I wrote then seems to have made many recall the days of Jim & Eileen and the Buttle family. The, “High Class Provision Merchant,” enjoyed the patronage of the, “Great and the Good.”

Amongst his customers Jim met Group Captain Townsend who lived in Elsenham Hall. My Mother would tell of this handsome man resplendent in his R.A.F. Uniform. The late Princess Margaret was sometimes to be seen accompanying him but that (as they say) is another story.

Vi Franklin worked alongside Ivy Smith and Maureen Graham and I seem to recall a lady called Mrs Hawtree who lived in Park Road. They also employed Jack Bateman who delivered the groceries from a Green Bedford Van. I have fond memories of travelling around the countryside delivering large cardboard boxes of groceries. “Health & Safety” would probably frown on boxes being reused to transport goods now. Have you noticed the window set high to the right of the Shop? I stood in the front “office” to observe Mr. Buttle serve a gentleman through that window as the rider sat outside the shop on his horse.

Life was never quiet at the shop. In the field opposite could be seen a large flock of sheep. If a ewe gets wet and rolls on its back it now has soggy wool and it is almost impossible for the poor thing to right itself. Jim walked into the field still wearing his white coat and approached this inverted sheep. He received a large cheer from all when a large push rolled the sheep safely onto its feet. Apparently damp wool had a strange, strong odour.

THE CHRISTMAS CHOIR IS BACK!

The Christmas Choir is being formed again for three services of Carols by Candlelight, one in each church.

Join us to sing the traditional carols telling the story of the birth of the Christ Child:

DATES OF SERVICES:

Sunday 18th December, 4 pm at St Peter’s, Ugley
Sunday 18th December, 7 pm at St Mary’s, Elsenham
Saturday 24th December, 7 pm at St Mary’s, Henham

DATES OF REHEARSALS:

Friday 18th November, 7.30 pm at St Mary’s, Henham
Friday 25th November, 7.30 pm at St Mary’s, Elsenham
Friday 2nd December, 7.30 pm at St Peter’s, Ugley
Friday 9th December, 7.30 pm at St Mary’s, Elsenham
Friday 16th December, 7.30 pm at St Mary’s, Henham

Choir members old and new from any of our three parishes are most welcome.

If you have any questions, contact Maxine Mott ☎ 812516 or

✉ motts@grahammott.plus.com)



Mat Duxbury

PAINTING

Professional Interior and Exterior Painting Specialist

References available on request

20 Years' experience

Fully Insured

NVQ Qualified and Health and Safety Certified

Local, reliable and friendly service guaranteed

For a free estimate please contact Mat on ☎ 07810 250426 or
email ✉ mat@duxburypainting.co.uk

ELSENHAM



CLEAR OVENS

Oven Cleaning Specialists

01279 89 89 96

we accept cards!


Make your oven look showroom fresh
with a professional clean from Clear Ovens.
Our fully insured expert technicians will
make it shine like new.



Covering Sawbridgeworth, Harlow
Epping, Great Dunmow, Braintree,
Stansted, Bishop's Stortford and
surrounding areas.

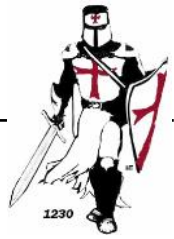
01279 89 89 96 or visit us online at
www.clearovens.co.uk

The difference is clear

ELSENHAM VILLAGE HISTORY SOCIETY

By Mike Rea, Secretary ☎ 813634 ✉ evhs12@hotmail.co.uk

🌐 www.elsenham-history.co.uk



As I mentioned last month, Ken MacDonald from the 100 Parishes Society was our speaker in September. The 100 Parishes is an area of some 450 square miles of northwest Essex, northeast Hertfordshire and southern Cambridgeshire that is largely unspoilt and richly endowed with many examples of agricultural and built heritage. It has a distinctive landscape of small and medium-sized farms linked by winding lanes and ancient rights of way. Elsenham lies roughly in the middle of this area which stretches to Linton in the north, Finchingfield to the east, Sawbridgeworth to the south and Buntingford to the west.

There are many rights of way available to explore the parishes, probably only surpassed by the number of rights of way in the Lake District. These vary in nature from walks through wooded glades to walks around and through fields. Many of the walks are along rivers and across rivers, using a splendid selection of bridges. Most of these paths and bridges are well maintained but they do fall into disrepair and from time-to-time walkers must contend with broken stiles, flooded riverbanks and overgrown paths to name but a few.

The walks are designed to show off the landscape. Therefore, footpaths feature heavily since they give views that are not visible from the road, such as the “Bartlow Hills”- a series of Roman burial mounds. The churches at Strethall and Chickney date from Saxon times but are not accessible by road, nor is Thundridge “old” church, although all that remains nowadays of that building is the tower.

The cricket ground at Matching Green boasts a replica of the “Old Father Time” weathervane from the Lord’s cricket ground, which teaches the lesson to always look up when walking. There is much to see including many thatched finials depicting flying pigs, dogs stealing the butchers’ sausages, witches’ hats, and many, many more.

There are over seven thousand listed buildings within the 100 Parishes, probably the densest covering in the country. Many pre-date the 17th century and they vary from grand houses to tiny cottages. The grandest nearby is Audley End House, the origins of which date back to 1538 when Henry VIII dissolved the Abbey that stood there and gifted it to Sir Thomas Audley who built the first house there.

All in all there are many interesting things to be seen within the 100 Parishes and it is the Society’s aim to make them accessible to all.

Our next meeting will be held on Wednesday November 9 when Richard Till will be along to talk about the “Cutlers of Thaxted”. Did you know that at one time Thaxted had the biggest cutlery industry in the country? Come along and find out more. Visitors are very welcome to any of our meetings and pay just two pounds per evening.

Essex Autospray

Your local Collision Repair Centre - Est 1982

- Free Courtesy Cars
- Free Estimates
- Low Bake Ovens
- Blackhawk Alignment



Tel: 01279 816296 E: info@essexautospray.co.uk

www.essexautospray.com

M11 Business Link, Parsonage Lane,

Fiona Gardiner

SKIN & BEAUTY CLINIC
ELSENHAM

**Discover
Skin
Confidence**

At Fiona Gardiner
Skin and Beauty Clinic

AWARD WINNING 2021
SKIN THERAPIST

- Cryopen Blemish Removal (Skin Tags, Warts, Sun Spots)
- Facial Rejuvenation
- Expert Laser Skin Treatments
- Clinicare Skin Peels & Facials
- Microdermabrasion & Dermaplane
- Botulinum Toxin Injections

SKIN SCANNING
WITH
OBSERV 320
TECHNOLOGY

SKIN
CONSULTATIONS
JUST
£25!

Elsenham, Essex
07858482728

facebook @fionagardinerbeauty



U3A STANSTED

☎ 07874 385541 ✉ stanstedu3a@gmail.com
www.u3asites.org.uk/stansted/home



Lots of celebrations have been taking place this year for the 40th Anniversary of the u3a. In Stansted the U3A Singers held a concert in St. John's Church to celebrate the great gift of love. Members were also treated to a tea party, with lots of home baked cakes served by members of the committee who made splendid waiters. We had a superb Quiz on 'How much do you know about Stansted'. Great questions ...just wish we had known the answers.

Our Open Day in St John's Church showcased many of the interest groups and activities that we offer including musical items by the Stansted u3a Singers and Strummers. There was also the 'Cutting of the Cake', iced in the colours of the u3a. We hope that we inspired you to come to one of our future meetings.

The Garden Group, one of our most successful groups, has been finding out about Langhorn's Plantery where they had a complete tour of the nursery. Ed Cannon, owner and Head Plantsman was generous with his time and knowledge as he gave them a conducted tour of his twelve acre site. The nursery propagates from many rare plants each year, many acquired from modern day plant hunters. It was particularly fortuitous that our visit followed an Open Week-End when tea and cakes had been sold in support of 'British Humanitarian Aid for Ukraine'. We were particularly grateful to Ed because he was usually closed on a Monday but gave up his day off to host us, even giving us tea and cake in his own garden, when he must have been exhausted.

Our next meeting will be held in St. John's Hall at 2.00pm on November 17. Peter Jones will be giving a talk on 'How I met Kylie Minogue '. His talks are always highly entertaining. Do come.

MACMILLAN CANCER SUPPORT

To everyone who supported our village Macmillan Coffee Morning, **thank you SO much**. It was lovely to see so many of you and even though the weather wasn't fantastic, it didn't stop us having such a super morning.



It really is a lovely way of raising money, drinking tea and coffee, eating the MOST delicious homemade cakes, playing fun games, chatting with friends old and new, what more could you want?

We had a brilliant team that pulled this whole event together as usual – thank you to you **ALL**, you know who you are. Of course, not forgetting the **Bowls Club** that kindly allows us to hold our event in their super club house each year. But we also have to thank everyone that made a scrummy cake for us, donated a super raffle prize to us or gave us a generous financial donation and it is thanks to **everyone** involved that we **raised over £1,500** this year..... Not bad for two hours!

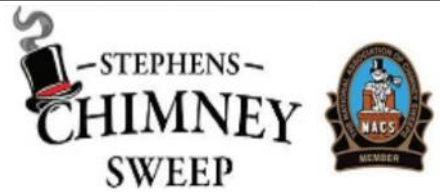




LOGS LOGS LOGS

- Well seasoned hard wood
- Transit load / bulk builder bag
- Cut to fire size

Call today ☎ 01279 718555
Or email ✉ dar13@mail.com



Insurance Certificate supplied - Fully Insured - Free Smoke Test
Open Fires - Multi Fuel Stoves - Aga - Rayburn - Gas - Oil Stove installations

CCTV Surveys - Bird Nest Removal Local Business

Tel: 0800 112 3600

Mob: 07918 708626

www.stephenschimneysweep.co.uk

S.E.P **TREE CARE & GARDEN MAINTENANCE**

Tree Topping & Felling
Pruning & Pollarding
Hedges cut, Trimmed & Removed
All waste Chipped & Removed
Garden, Garage & Site Clearance
Gravel Driveways & Paths
Fencing

Turf Supplied & Laid
Jet Washing Paths & Driveways
Local Tradesman

20 years experience
For a free estimate Phone

07903 621657
08000 588057

14 Day Cooling off Period



Do you have a property to rent?



TBS Homes Ltd

I help property owners achieve a consistent rental income over 3-5 years with no fees and keep the house in show home condition with regular cleaning and inspections.

If you have a 3, 4 or 5 bedroom house please get in touch and see how I can help you.

Phone: 01279 742 340
Text: 07471 370 908

email info@tbshomes.co.uk

NATURAL OUTLOOK

By Heather Salvidge ☎ 814153



In November 2019 there were 115 flood warnings active in the UK with the Midlands hard hit. Last year instead of heavy downpours there was mizzle and drizzle and Storm Arwen to finish the month. This year we will probably get our share of icy winds, frosts and the occasional “warm sunny day”. I don’t really know what else this year. These weather patterns do, however, give us some spectacular sunrises and sunsets with wonderful colours. By the end of November it is dark by 4:30 pm.

Normally we would be looking forward to the arrival of wintering birds but this year it comes with a caveat and fingers tightly crossed; why? Avian Flu. We have had this disease in domestic and wild birds for a while and some birds e.g. geese, swans, buzzards, curlews and domestics, have died. Usually it starts when the wild ones arrive and dies out in the warm spring. Not this year. All through the summer bird observers and others have been finding dead and dying sea birds, waders, geese etc. and chicks. Domestic fowl have been affected and thousands culled. Birds on rivers and The Broads, such as mute swans and Canada geese, are seen failing and dead.

About 60 species are now affected. It is not known how many will make it through and whether the spring will bring its usual closure. Just when work to help some species recover, e.g. black tailed godwits, is making progress their numbers might plummet again. I wonder what will happen to birds on the Cam in front of Audley End House? If you find a dead bird don’t you (or the dog) touch it. If you want advice the DEFRA contact number is ☎ 03459 335577.

I don’t know how much this will affect our garden birds but I do know I enjoy watching them. Once the leaves have started to fall, blackbirds hop from one leaf to another, flicking them over looking for worms and insects. They spend time on berry-bearing bushes and trees, be they cotoneasters or hollies, pecking away at ripe fruits. Sometimes, having just filled the main water bowl in the front, I watch as seven or eight sparrows arrive, have a quick sip and then all pile in for a communal bath, preening and splashing so that when they leave I have to fill up the bowl again.

This happens all year round as witnessed in a back garden bird bath on a very cold winter day. Mrs Blackbird landed on it and started to give herself a really good wash, she was then joined by two blue tits. She flew off and two goldfinches arrived. These four had a happy time in near freezing water! Starlings too are great communal bird-bathers and fun to watch.

Work to The Spinney; the first late summer cut to the wild flower area, was in late September and the follow-up was therefore scheduled for October. This is when we have the chance to plant any new species we have collected. We then expect to plan the tree work. This season we will concentrate on management of the top wooded area, some work there for professional and volunteer work parties.



Replace, Repair & Revive Your Double Glazing

All types of double glazing repairs, maintenance & installations, including emergency callouts. At replaceglaze.com we provide a reputable, family-run double glazing repair & installation service.

Our services include:

- Double glazing installations, repairs & maintenance
- Aluminium, composite & uPVC installations
- Windows & door handles
- Locks & hinges
- Mistified units
- Patio door wheels
- Door adjustments & lubrication
- Aluminium bifolding doors
- Composite doors
- Aluminium/uPVC roof lanterns



01279 282997 01371 701000

info@replaceglaze.com www.replaceglaze.com

replaceglaze

Luxury Toilet Hire (UK) Ltd



Whether you are arranging a wedding, private party or corporate event, let Luxury Toilet Hire (UK) Ltd provide you with the perfect toilet facility to make your occasion a memorable success.

Cesspit emptying also undertaken.

Tel: 01371 873003 or 01279 504638
 Email: info@luxurytoilethire.co.uk
 Web: www.luxurytoilethireltd.co.uk




We also hire out mobile fridge and freezer units.

Please contact us for a quote:
 Tel: 01371 873003 or 01279 504638
 Email: info@chillermatic.com Web: www.chillermatic.com

HANDY MAN SERVICES

NEW YEAR LOOK AROUND THE HOME

All decorating in any colours using Dulux paints. All new flooring installs any type light wood, dark wood and oak. Electrical new lighting LED, fittings, sockets, switches change to chrome/brass. Alterations to out houses, garages to extra room, dining room, office and many more.

Call Dennis Free Quote
 07946 231302




Call for your free quote
 07960 941 138

AREAS COVERED
 Elsenham
 Bishop's Stortford
 Harlow
 Cambridge
 and everywhere in between

ELECTRICAL SERVICES

- Installations
- Maintenance
- Fault-Finding
- New Consumer Units

contact@tdcelectrical.com www.tdcelectrical.com

THE HUNDRED PARISHES SOCIETY

www.hundredparishes.org.uk

Ken McDonald, Secretary



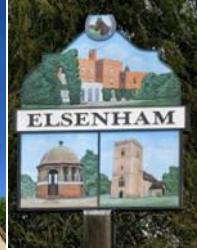
I live in Stansted Mountfitchet. The name is an interesting one: Stansted derives from Saxon language meaning stony place; Mountfitchet is a corruption of Montfiquet, a village in Normandy. A man from there fought with William the Conqueror and was rewarded with land in Stansted.



Several of the Hundred Parishes have names ending in the Saxon STED, STEAD or TED. THAXted refers to the thatch that could be obtained there; BROXted seems to come from BROCK, the old name for badger.



Many of our towns and villages were recorded in the Domesday Book of 1086. Duxford appears as Duchesuorde, or Duc's Enclosure. Duxford has a number of locations where ancient travellers could FORD the River Cam. There are several more FORDs.



Domesday includes the manor of Pelham, possibly the home or farm of a man called Peola. The Norman family De Furneux added its name to establish Furneux Pelham, while part of the manor was destroyed by fire in the twelfth century and became 'burnt' or Brent Pelham. Stocking Pelham, seems to have adopted an Old English word meaning 'made of logs', perhaps referring to the parish church. HAM appears at the end of more parish names, suggesting that they also arose from someone's home or farm.



The parish of Quendon and Rickling was created in the 1940s, bringing together two settlements whose names related to an ancient queen. Quendon is recorded as Kuenadana in Domesday and may come from Old English words meaning a valley owned by the queen. Rickling was recorded as Richelinga and may be derived from Rricula who was the wife of Sledd, a 6th-century ruler of Essex. Ten parish names end in ING, a Norse word for meadow or enclosure. More origins are discussed in the parish introductions on our website.

The Hundred Parishes is 450 square miles of northwest Essex, northeast Hertfordshire and southern Cambridgeshire that is largely unspoilt and is richly endowed with many fine examples of agricultural and built heritage. The area has shared a common history which shaped and preserved its distinctive landscape of small and medium-sized farms linked by winding lanes and ancient rights of way to hamlets, villages and then to small market towns. For more information visit www.hundredparishes.org.uk.



The **Executives Choice**
Chauffeur Company providing
clients with premium transport
at affordable prices. Airports,
sporting events, theatre trips
etc.

Corporate accounts welcomed.
7 Seater available

To discuss your requirements

Contact Graham Anderson: graham@execschoice.com

Phone 07481 494988

www.execschoice.com

MASKALLS **TREE SURGERY**

Small family business

**Big expertise
in trees**

Call George

M: 07982 601 570 | T: 01279 819 127

email: george@maskalls.co.uk

www.maskalls.co.uk



**All types of tree care & hedge cutting undertaken.
Call for a free estimate.**



ELSENHAM BOWLS AND SOCIAL CLUB

By Sue Waite



The winter season at the bowls club is in full swing with the Bishop's Stortford Crib league taking place each Tuesday. We have two teams, A and B. Traditionally the B team comes bottom of the league but this year we are determined to do better - watch this space!

The darts team are a happy bunch who are always looking for new members; come along any Wednesday and join them.

Our pool team, run by Lee Reilly, has also started and I know Lee is always looking for new members, so come along any Monday to watch them play.

Short mat is on Thursdays. You don't have to be a bowler to play this enjoyable and fun game and we can supply you with bowls to play.

Unfortunately, our last social event had to be cancelled due to lack of interest. This was disappointing for those of us who had wanted to attend. As members, both social and bowling, you need to let us know what events you would like to see organised at the club. Any comments from you are really appreciated and will guide our thinking about what to do in the future.

Trevor Hackett's quiz was well attended and a good night was had by all. Congratulations to Margaret Shaw's table for winning.

There is also some sad news to share with you. Our social lead, Elaine Bright, has resigned from the committee. She has worked tirelessly organising events for us and she will be much missed. Many thanks Elaine for all your hard work and your super desserts. If anyone feels they would like to join our committee and try to make a difference, then please get in touch.

From The Parish Registers

Funerals:

Service of Thanksgiving at Elsenham Church, followed by a burial in Elsenham Churchyard on 30th September 2022, Gordon William Barker, aged 88 years, of Fullers End, Elsenham

Service of Thanksgiving at Elsenham Church, followed by a burial in Elsenham Churchyard on 6th October 2022, Jenny (known as Jean) Rollinson, aged 96 years, of Henham Road, Elsenham

Church Contact Details

Church Office	01279 814285	Anna Hicks
Church e-mail address		office@heuchurch.co.uk
Church web-site address		www.heuchurch.co.uk

Enquiries about thanksgivings, baptisms, weddings and funerals should be made in the first instance to Anna Hicks at the Church Office.

Spellbrook Garden Design

DRIVEWAY & GARDEN DESIGN

- ✓ Decorative Walling and Fencing
- ✓ Patios & Paths
- ✓ Block paving, Tarmac and Graveling
- ✓ Decking
- ✓ Turfing, Garden design and build
- ✓ Stone cleaning

spellbrookgardendesign.simdif.com

Tel: 07799 603089 / 01279 503936 / 0800 696 5257

Westwoods, London Rd, Spellbrook CM23 4AH



Checkatrade.com



DECORATING SERVICES ALL ASPECTS OF DIY

NO JOB TOO SMALL

For a friendly reliable service
Just Ask.....

GARY KING

Home : 01279 850001

Mobile : 07951 452602

g.king962@btinternet.com

YOUNG'S

WINDOW CLEANING SERVICE

We specialise in residential properties offering a quality and regular service for exterior and interior cleans
Serving the Elsenham community for the last 10 years

Call or text Malcolm for a FREE quote
07817 481901

ELSENHAM TENNIS CLUB

By Petra Studholme 📞 814667



ETC Quiz Night on Saturday 12 November, 7.30pm for 8pm at the Bowls Club

Back by popular demand, our quiz will include a Ploughman's Supper, raffle, licensed bar and, of course, the quiz presented by Trevor. £8 per brain and a maximum of 8 people per table. To book please email mail@elsenhامتennisclub.co.uk or ring Petra on 01279 814667.

Half price membership available as of 1 October

We will be offering half-price membership from 1 October to 31 March next year, so you can join Elsenham Tennis Club for as little as £35 as a full adult member or £8 as a junior. Student, senior, couples and family rates are also half-price. To find out more about us go to www.elsenhامتennisclub.co.uk. Please note that the prices you see are full membership from 1 October 2022 to 31 March 2023. We have individual coaching, group coaching and cardio sessions, all run by our dedicated and experienced coach Steve.

Hire our courts. Open to non-members

Hire our courts to play with friends and family for £3 per adult, and 50p for under 18s. You can email us or message on Facebook for availability but please, if possible, give 24 hours' notice as we need to arrange to open the courts for you.

Mixed and Men's teams results in the ESC Summer 2022 League

Jon's Men's update:

We drew with Much Hadham at home 8:8 with some tight long games. There was some good tennis and a fair result in the end.

Petra's Mixed update:

Our home match against Pleshey was tense and fiercely contested but we eventually lost 6:10. This was the first match of the season for Jess and Teddy. Well done to them and to Em and Ollie who also teamed up together for the first time.

Plenty of action and long rallies in our next match at home to Stansted resulted in a fair 8:8 draw. This was the first match for Hollie, partnering Stuart and Simona partnering Jon.

Next up was our away game at Bishops Stortford. As it was on Astro turf, we all struggled to get used to this very different surface. Hollie and Lewis, Petra and Ollie still managed a very respectable 8:8 draw.

The last match of the summer season was away to Stansted where Hollie partnering Lewis and Petrina partnering Dave excelled with a 15:1 win. The was a hard-fought match and a brilliant result, particularly as it was Petrina's first match in three years and Dave's first match for ETC.

This excellent result puts us near the top of the leader board for Division 3. I am the proud captain of a very young team; bring on the winter league!

Weekly Activities

Tuesday evening – 6.30pm cardio tennis

Tuesday evening – 7.30pm club night

Wednesday morning – 10am causal play

Thursday evening – 6.30pm group coaching (rusty racket)

Thursday evening – 7.30pm cardio tennis

Friday morning – 10am casual play

Sunday afternoon – 2pm casual play



NEED A VENUE?

Elsenham Village Hall currently has availability on Wednesday, Thursday & Friday evenings.

Introductory rate for new bookings (half price for first 4 weeks).

Email Annie at:
elsenhavillagehall@gmail.com

CHIROPODIST & PODIATRIST

Bishop's Stortford

- Orthotics
- Diabetic Foot Care
- Saturday Clinics
- Routine Treatment

R. Handford & Colleagues
H.C. P.C Registered

Bishop's Stortford - 16 Hockerill
Street

01279 652249

www.feet.org.uk

Do-It-4U

Repair, Care & Maintenance

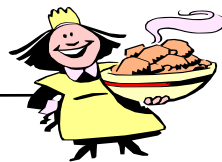
For your Home and Garden

- ◆ Plumbing, Electrical & Carpentry Services
- ◆ Drain Blockages Cleared
- ◆ Gutters Cleaned, Repaired or Replaced
- ◆ Gardens Tidied & Maintained
- ◆ Hedges & Topiary Trimmed & Shaped
- ◆ Fences Erected & Repaired
- ◆ Sheds & Other Sectional Buildings Erected

Telephone
01279 814411
Mobile
07774 877320

COOKERY CORNER

By Sue Johnson ☎ 812704



Use your slow cooker to make this rich, creamy stew with delicious fall-apart beef, tomatoes and peppers.

SLOW COOKER BEEF GOULASH (serves 4)

1 tablespoon olive oil
750g braising or stewing beef, cut into chunks
2 onions, finely chopped
2 red, green or yellow peppers, cut into 4cm chunks
2 garlic cloves, crushed
1 tablespoon flour
1 teaspoon hot smoked paprika
1 tablespoon sweet smoked paprika, plus extra to serve
400g tin of chopped tomatoes
250ml beef stock
150ml soured cream
Salt and pepper
Small bunch parsley, chopped

Heat the slow cooker to low. Heat olive oil in a flameproof casserole until quite hot. Season and sear the beef until brown on all sides. Transfer to a plate.

Turn the heat down to medium, add the onions and fry for 5 minutes until lightly golden. Add the peppers and garlic. Fry for another 5-10 minutes, then stir in the flour and spices. Cook for 2 minutes more. Stir in the tomatoes and stock. Season well. Bring mixture to a simmer. Tip into the slow cooker with the seared beef. Cover and cook for 6-7 hours until the beef is tender and the sauce has thickened slightly.

Season to taste. Then swirl the soured cream and most of the parsley through the stew. Scatter over the remaining parsley and some sweet smoked paprika. Serve with new potatoes or brown rice and vegetables.

CHEF'S RECOMMENDATIONS:

Braised red cabbage goes really well with this.



GLYNN'S CHIMNEY SWEEPS

Est. 1995



VACUUM AND BRUSH

**NACS MEMBERS
HETAS APPROVED**

COMPETITIVELY PRICED

01279 424983

www.glynnschimneysweeps.com

E. N.C. Electrical Limited

Industrial Agricultural Domestic

Electrical Installations

Fire Alarms/Emergency Lighting

Fault Finding

Portable Appliance Testing

Fixed Wiring Test & Inspection

Over 25 Years Experience in the
Electrical Industry

Contact: Ian Arran

Tel. 01279 647042
Mobile 07776 252994



Email: encelectri-calltd@btinternet.com

44 Alsa Gardens Elsenham

Bishop's Stortford Herts, CM22 6HB

BOSS

PROFESSIONAL CLEANING SERVICES

- ✕ Windows
- ✕ Conservatories
- ✕ UPVC Soffits & Fascias
- ✕ Gutters
- ✕ Patio & Driveway Cleaning

We're a family run business based in Herts & Essex with more than 20 years experience. We provide one-off or regular visits, it's up to you. Very friendly - No job too big or small

Contact: Tony

Tel: 07977 970 371

Email: tony@boss-cleaning.co.uk

Website: www.boss-cleaning.co.uk



THE DUTCH HOUSE by Ann Patchett
Reviewed by Marion Giles for Elsenham Book Group



'In the economic boom following the Second World War, Cyril Conroy's real estate investments take his family from poverty to wealth. With it he buys the Dutch House, a lavish mansion in the Philadelphia suburbs. Meant as a surprise for his wife, the house sets in motion the undoing of everyone he loves.

Danny Conroy grows up in the opulence of the Dutch House. Though his father is distant and his mother is absent, Danny has his beloved sister Maeve: Maeve, with her wall of black hair, her wit, her brilliance. The siblings grow and change as life plays out under the watchful eyes of the house's former owners, in the frames of their oil paintings.

Then one day their father brings home Andrea, a new stepmother. Though they cannot know it, her arrival to the Dutch House sows the seed of the defining loss of Danny and Maeve's lives: exiled from the house and tossed back into the poverty from which their family rose, Danny and Maeve have only each other to count on. ' So says the blurb on the back of the book.

'Patchett leads us to a truth that feels like life rather than literature.' *The Guardian*

This was the choice of the book group this month and was generally liked by all.

Danny is the narrator and the story spans from being a young boy to being a father of adult children. The story concerns Danny and Maeve and their childhood home and things they can't let go. Their father bought the house and all of its contents, which remain untouched. There were no descendants once the old lady of the house passed away and its occupants included Fluffy, who becomes the children's carer and Sandy and Jocelyn who run the house.

Their mother, Elna, believes she has a calling to help the poor and leaves her husband and children to move to India for a new life. Things are relatively stable for them until their father marries Andrea and brings her and her two children to the house. She pretty much fulfils the role of the 'wicked stepmother' and sets about changing lives for Danny and Maeve. When their father dies, they learn that the house, his money and all the real estate he owns is in Andrea's name and she throws Maeve and Danny out. Fluffy had already left and so now Sandy and Jocelyn are also sacked. The rest of the story depicts how and where they lived and how they all find each other again later in life including their mother who returns. A quote from Danny sums up the context of the story, *"Like swallows, like salmon, we were the helpless captives of our migratory patterns. We pretended that what we had lost was the house, not our mother, not our father. We pretended that what we had lost had been taken from us by the person who still lived inside."*

Published by: Bloomsbury	ISBN: 978-1526614971
--------------------------	----------------------

Editorial Information

Articles

The **last day** for editors to receive articles, advertising and letters, which must contain the author's name and address (which may be withheld), is the 8th of each month.

Articles should ideally consist of a half page of A5 or a full page of A5. Articles over these sizes or letters containing more than 500 words may be edited depending on space.

Copy submitted after the 8th may not be accepted but will, if deemed appropriate, be held over to the next month. We are happy to receive hand written articles which ideally should reach us earlier than the 8th to allow for scanning etc.

Dates for the Diary must include date, event, venue and time.

Please submit all articles, adverts, letters and queries to the editorial team at:
elsenhamsnews@hotmail.co.uk

General Notes

Whilst every effort is made to ensure that information is correct, the editorial team cannot be held responsible for any inconvenience caused through errors or omissions.

The views expressed within this magazine are not necessarily the views of the editorial team or Elsenham Community Association (ECA).

The editors and the ECA can accept no responsibility for the goods or services advertised in the magazine. Advertisements are included in good faith. The editors reserve the right to allow replies to letters/articles to be made in the same edition when appropriate.

The editors' decision is final.

Wanted/For Sale items: individuals may submit short details of items wanted or for sale etc at no charge. These will be included in the next available issue of the magazine subject to space and acceptance by the editors.

Subscriptions

Elsenhams News is available by email (on a pdf) at no charge, or through the post at a cost of £13 per annum. Contact elsenhamsnews@hotmail.co.uk

Advertising

The costs are as follows:

	Single Insertion	Annual Cost (11 issues)
Half Page	£20.00	£190.00
Quarter Page	£10.00	£100.00
Inside Page	£50.00	n/a
Back Page	£75.00	n/a

Village organisations attract reduced rates, £5 for ¼ page. Half and full-page adverts attract full rates.

To place an advertisement:

For any queries, contact Nathalie. Please send your advert as Word or Publisher via email to elsenhamsnews@hotmail.co.uk

Advertising Editor: Nathalie Kosorin

Business Advertising

Cheques should be made payable to **"Elsenhams Community Association"**.

Editorial Team:

**Gary Williams
Emma Bailey
Marion Giles
Patricia Davis
Anne White
Nyaradzo Chabata
Angie Wenlock**

Previous issues of Elsenham News are available on the ECA Website

www.ElsenhamsCommunityAssociation.org.uk

UPCOMING EVENTS

Christmas Tree Festival Elsenham Church December 3 and 4
Boxing Day Walk December 26 at 11am

VILLAGE CONTACTS

Airport Roadside Parking		0800 731 2385
Beavers	1sthenhamandelsenham@gmail.com	
Bowls Club	Jean Platt	816151
Brownies	elsenhambrownies@outlook.com	
Church Office (Old Franks, High St, Elsenham)	Anna Hicks	814285
County Councillor (Stansted)	Ray Gooding	813103
Cricket Club	David Brown	831011
Cub Scouts	1sthenhamandelsenham@gmail.com	
ECA (Chairman)	Allan Hathaway	813385
ECA (Secretary)	Moyra Jackson	647351
ECA Website	www.ElsenhamCommunityAssociation.org.uk	
Elsenham Surgery	www.elsenhamsurgery.nhs.uk	814730
Elsenham C of E Primary School	Linda Todd Headteacher	813198
Elsenham Church PCC Secretary	David Hill	812397
Elsenham Rights of Way website	www.e-voice.org.uk/erowos/	
Friends of Elsenham School (FOES)	Gemma Mills	07745 036066
Guides elsenhamguides@gmail.com	Gemma Schafer	07792 572423
Henham & District Garden Society	Moyra Jackson	647351
History Society	Mike Rea evhs12@hotmail.co.uk	813634
Member of Parliament	Kemi Badenoch	0207 219 5214
Memorial Hall Bookings	Cheryl Rae	817834
Neighbourhood Watch Co-ordinator	Francis Lambert	07771 728332
	francislambertnhw@btinternet.com	
Parish Clerk - Louise Johnson	louise.epc@gmail.com	07456 791727
Elsenham Parish Council Website	www.elsenham-pc.gov.uk	
Police		101
Post Office		812175
Rainbows	elsenhamrainbows@outlook.com	
Scouts	1sthenhamandelsenham@gmail.com	
St Mary's Fabric Fund	Elizabeth Barker	813543
Tennis Club	Petra Studholme	814667
Tots & Toddlers	Dawn Temple	814406
Uttlesford District Councillors (for Elsenham & Henham)	Petrina Lees	816675
Village Hall Bookings	Garry LeCount	07836 346717
Village Hall email address	Annie Gleeson	07809 490731
Womens Institute Secretary	elsenhamvillagehall@gmail.com	647729
WI website	Gill Hathaway	813385
	www.elsenhamwi.co.uk	
Youth Football Club (Chairman)	Ricky Lambourne	info@elsenhamyfc.co.uk

If you would like your village organisation contact to appear regularly in the magazine, please contact one of the editors, see opposite for details.



Welcome to our
Farm Shop & Tearoom
The Barn, Pledgdon Hall, Henham,
Bishops Stortford, CM22 6BJ

If you would like to order from us or book a table, please call us on 01279 248 201 or email orders@cliffords.info

Open Monday to Saturday 9.00 to 17.00 (CLOSED TUESDAYS), Sundays 9.00 to 16.00, Pig Sty Tearoom open 9.00 to 15.30



About our Farm Shop

We stock a vast array of produce.

Fresh fruit and vegetables sourced from New Spitalfields Market, local meats and poultry from Priors Hall, bread and cakes from The Brown Bread Co. & beers and spirits from local microbreweries & distilleries. Foods and drinks from around the world & a large gluten free range and many vegan items.



Open Monday to Saturday 9.00 to 17.00 (CLOSED TUESDAYS), Sundays 9.00 to 16.00, Pig Sty Tearoom open 9.00 to 15.30

Pig Sty Tearoom

All Day Breakfasts & Lunch with both Full Size "Pig Sty" meals as well as smaller "Piglet" size servings and for the youngest among us a "Baby Piglet" menu.

Sunday Lunches with 2 meat choices and a veggie choice every week, including homemade desserts.

Our Afternoon and Cream Teas are fast becoming legendary, freshly made Sandwiches, Scones & both Home Made Cakes and Belguite Patisserie.



If you would like to order from us or book a table, please call us on 01279 248 201 or email orders@cliffords.info