

Elsenham News



Annual Parish Meeting
Open to all
See Page 35

elsenhamnews@hotmail.co.uk

May 2025
75p where sold

Elsenham Village Regular Monthly or Quarterly Activities

Parish Council 1st **Monday** of month 7.45pm (excl. Bank Holidays) Memorial Hall
 Natter Night 2nd **Monday** of month 7-9pm Golf World Stansted
 Elsenham EAGLES 4th **Monday** of month 7.30-9pm Bowls and Social Club
 Henham & District Garden Soc. 1st **Tuesday** of month 2 for 2.30pm Memorial Hall
 Community Choir 1st & 3rd **Tuesday** of month 7- 8.30pm Village Hall
 Life Drawing 2nd and 4th **Tuesday** of month 7.30-9.30pm Village Hall
 Village History Society 2nd **Wednesday** of month quarterly 7.45pm Memorial Hall
 Women's Institute 3rd **Thursday** of month 7.45pm Memorial Hall
 Gong Baths 4th **Thursday** of month 7.30pm Memorial Hall
 Church Lunch Club 2nd & 4th **Friday** of month 12.30pm Memorial Hall
 Elsenham Farmers' Market last **Saturday** of month 12.30 - 2.30pm Village Hall

May 2025 diary

Sat 3	Piccadilly Swing	Bowls & Social Club 7 for 7.30pm
Tues 6	Henham & District Garden Soc.	Memorial Hall for 2.30pm
Tues 6 & 20	Elsenham Community Choir	Village Hall 7pm
Thurs 8	ECA Meeting	Memorial Hall 7.45
Fri 9 & 23	Church Lunch Club	Memorial Hall 12.30pm
Mon 12	Parish Council Meeting	Memorial Hall 7.45pm
Mon 12	District Councillors' Surgery	Orwell House, Station Road Elsenham, 6.30pm
Mon 12	Natter Night	Golf World Stansted 7-9pm
Tues 13 & 27	Life Drawing	Village Hall 7.30pm
Thurs 15	WI	Memorial Hall 7.45pm
Sat 17	EFSS Plant Sale	Memorial Hall 10am-2pm
Sat 17	Bingo	Bowls & Social Club 7.30 for 8pm
Sun 18	Community Garden discussion	Woodland View 11am
Mon 19	Elsenham Eagles	Bowls & Social Club 7.15pm
Thurs 22	Gong Baths	Memorial Hall 7.30pm
Fri 23	Annual Parish Meeting	Village Hall 8pm
Sun 25	Bowls Club Open Day	Bowls & Social Club 11am-4pm
Sat 31	Famers' Market	Village Hall 12.30-2.30pm



Mobile Library ** new day**
Every third Saturday stopping at Glebe End
9.30am to 10am Next visit: 3 and 24 May

Elsenham Village Regular Weekly Activities

Day	Time	Activity	Location
Monday	9.30-10.30am	Zumba	Memorial Hall
	10.30-11.30am	Health walk	Start at De Mandeville Green
	4-4.30pm	Rascals (3-4yrs)	Memorial Hall (term time)
	4.30-5.30pm	Rascals (5-7yrs)	Memorial Hall (term time)
	5.30-7pm	Rascals (8-12yrs)	Memorial Hall (term time)
	7-7.45pm	Pilates	Elsenham Village Hall
	7.30-8.30pm	Shape to the beat	Memorial Hall (not 1st Monday)
Tuesday	9.30-10.15am	Touchpoint Food Share	Bowls & Social Club
	9.30-11.30am	Village Café Coffee	Memorial Hall
	4.45-5.45pm	Rainbows	Memorial Hall (term-time)
	4.45-5.45pm	Beavers	Ugley Village Hall (term-time)
	6-7.15pm	Cubs (Wolf Pack)	Ugley Village Hall (term-time)
	6-7.30pm	Brownies	Memorial Hall (term-time)
	7.30-10.30pm	Tennis Club night	Tennis Courts
	8pm	Fitness Yoga/Pilates	Memorial Hall
Wednesday	9.45-11.30	Tots and Toddlers	Memorial Hall
	5.30-7pm	Slimming World	Memorial Hall
	6.30-7.15pm	Women's strength and Mobility	Village Hall
	7-9pm	Scouts	Ugley Village Hall (term-time)
	7.30pm	Aerobics	Elsenham Village Hall
Thursday	9.30-11.05am	Teddy Bear Music	Memorial Hall (term-time)
	6-7.15pm	Cubs (Bear Pack)	Ugley Village Hall (term-time)
	6.45-7.45pm	Jump Fit	Elsenham Village Hall
	7.30pm	Gong Baths	Memorial Hall
Friday	10-11am	Little Fishes	Memorial Hall (term-time)
Saturday	8.15am-1pm	Tarte au Citroen	Playing Field
	8.15am-1pm	Youth boys & girls football	Playing Field
	9-10am	Dance Scene	Memorial Hall
	8.45-9.30am	Little Kickers Mighty	Village Hall (term time)
	9.35-10.20am	Little Kickers Junior	Village Hall (term time)



Pike's Plumbing & Heating

Whether you're looking for a plumber or heating engineer, Pike's Plumbing & Heating can help.

If it's an emergency, simple problem or you're just thinking about a new boiler or bathroom give me a call – I'm available when you need me 24/7. Now's a good time to think about servicing your boiler too and make sure you're not left out in the cold! No Call-Out Charges & Free Quotations

Tel: 07889 140035

Craig Pike

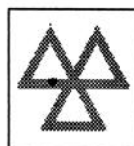
Email: info@pikesph.co.uk

Web: www.pikesph.co.uk



GARRETT'S GARAGE SERVICES

42 Golds Business Park, Elsenham
Bishop's Stortford, Herts CM22 6JX



- | | | |
|----------------------|---------------------------------------|---|
| • Mechanical Repairs | • M.O.T.'s - Catalyst & Diesel Tested | <i>MODERN WELL
MAINTAINED
WORKSHOP</i> |
| • Servicing | • E.H.D.C. - Authorised | |
| • Tyres | Hackney Carriage | |
| • Engine Tuning | Testers | <i>ALL MAKES OF VEHICLE</i> |
| • Computer Diagnosis | • Batteries | |
| • Windscreen Repairs | • Exhausts | <i>*FREE COLLECTION AND*
DELIVERY SERVICE</i> |

TEL: 01279 647777 FAX 01279 817622



Time marches relentlessly on and, with it, so does change. When the team producing Elsenham News changed nearly two years ago, it was as a result of change. And now, it is time for more change.

This will be the penultimate hard printed copy of Elsenham News. The June issue will be the last printed version. Following that all future issues will be online only. It will still be ‘published’ monthly and details of how to access it will be made available in next month’s issue.

There is no doubt that change is not welcomed by everyone. However, the switch has been driven by change in other areas. The increasing number of households in Elsenham and the associated increased costs of trying to reach them all just does not balance. Added to that, the ever dwindling pot of money available to us inevitably runs out eventually.

So we must look to the future and how we may serve the community in an affordable way. We would also like to attract a younger generation to get involved with the production and publishing of Elsenham News. And so we turn to technology. We hope that choosing this path will meet our challenges – or the vast majority of them – for the future.

Like many of our readers, we on the Elsenham News team are sad to see the little yellow booklet disappear after all these years. But we accept that we must look forward and provide a service to all the community and the future generations that will call Elsenham their home.

More details will follow next month.

Did you know that Elsenham News is available on the ECA Website

www.elsenhamcommunityassociation.org.uk



Regular features

Parish Council	7	Elsenham EAGLES	27
Development Developments	9	Aubrey Buxton Nature	29
Village History Society	11	100 Parishes	31
Daisy May’s Farm	13	Cricket Club	33
Elsenham WI	15	Bowls Club	35
District Councillors’ Report	17	Parish Council AGM	35
Ray’s Reflections	19	Tennis Club	37
EFSS	21	Book review	39
U3A	23	Cookery Corner	41
Church Calendar	25		

E. N.C. Electrical Limited

Industrial Agricultural Domestic

Electrical Installations

Fire Alarms/Emergency Lighting

Fault Finding

Portable Appliance Testing

Fixed Wiring Test & Inspection

Over 25 Years Experience in the
Electrical Industry

Contact: Ian Arran

Tel. 01279 647042
Mobile 07776 252994



Email: enelectri-
calltd@btinternet.com

44 Alsa Gardens Elsenham

Bishop's Stortford Herts, CM22 6HB



replaceglaze
Replace, Repair & Revive Your Double Glazing

All types of double glazing repairs, maintenance & installations, including emergency callouts. At replaceglaze.com we provide a reputable, family-run double glazing repair & installation service.

Our services include:

- Double glazing installations, repairs & maintenance
- Aluminium, composite & uPVC installations
- Windows & door handles
- Locks & hinges
- Misted units
- Patio door wheels
- Door adjustments & lubrication
- Aluminium bifolding doors
- Composite doors
- Aluminium/uPVC roof lanterns



01279 282997 01371 701000

info@replaceglaze.com www.replaceglaze.com

 [replaceglaze](https://www.instagram.com/replaceglaze)

TAKELEY IRONING & DRY CLEANING

OPENING TIMES
MONDAY - FRIDAY 8AM - 5PM
SATURDAY 8AM TO 12PM

FREE LOCAL COLLECTION & DELIVERY TO YOUR DOOR

Takeley, Elsenham, Henham, Stansted, Felsted, Hatfield Broad Oak, Hatfield Heath, Sheering, Dunmow, Sawbridgeworth, Broxton, Spellbrook, Molehill Green, Broxton, Little Canfield.

- ✓ WASHING & IRONING
- ✓ IN HOUSE DRY CLEANING
- ✓ 48 HOUR SERVICE
- ✓ DUVETS
- ✓ CURTAINS
- ✓ ALTERATIONS
- ✓ WEDDING DRESSES

The Centre, Dunmow Road (Behind Londis)
Takeley, Bishop's Stortford
Herts, CM22 6SH

Email: takeleyironing@gmail.com
takeleydrycleaning@gmail.com

Tel: 01279 871245

ELSENHAM PARISH COUNCIL MEETING 7 APRIL

By Louise Johnson, Clerk.

✉ louise.epc@gmail.com ☎ 07456 791727



There was a lot of discussion at the meeting on the road closures in and around Elsenham. Essex County Councillor Ray Gooding said the road closures were not proposed by Essex Highways but by the water and gas utilities. The gas pipes on Grove Hill are in a very serious state of deterioration with only about 15 months working life left, so the work is essential.

Elsenham Parish Council are going to write a letter to Essex Highways stating the disruption the road closures have caused the residents of Elsenham, plus, the signage denoting the road closure, which starts at Thaxted, is very ambiguous. Unfortunately, this is all the Parish Council can do. The Parish Council have no authority over Essex County Council or Essex Highways.

It was pointed out to Cllr. Ray Gooding that while Grove Hill was closed, it would be a good time to do any extra work that was required. The village did not want Grove Hill to reopen just to close again to repair potholes. Cllr. Gooding said he would investigate this.

The Parish Council agreed to give a donation of £200 to the Buffy Playbus and to Uttlesford Community Travel.

The two flowerbeds at the entrance of Leigh Drive are going to be transformed into the Beth Chatto style. The flowerbeds are due to be emptied of plants and re styled.

A sign has been placed on the Memorial Garden gate asking people to be respectful. Dogs should be kept on leads and children should not be allowed to climb on the memorial cross. This is a memorial garden for quiet reflection.

Cllr. Mott had attended a meeting with the Chairs from Stansted and Henham Parish Councils to discuss devolution and the opportunity for parish/town councils to take on extra responsibilities. It is unknown what duties the parish councils may be asked to take over. It is unlikely that any extra responsibilities would come with any extra funding. Parish/town councils do not have to take over a responsibility if they do not want to. There is currently a consultation regarding a mayoral combined county authority.

The Climate Change and Environment Committee are still researching LED streetlights for Station Road. The LED lights must not have a detrimental impact on insects.

The next meeting on 12 May 2025 at 7.45pm in the Memorial Hall is the Annual Parish Council meeting. This is the meeting where the Chair, Vice Chair, committees, working groups and representatives to outside bodies are appointed for the coming year.

CHIROPODIST & PODIATRIST

Bishop's Stortford

- Orthotics
- Diabetic Foot Care
- Saturday Clinics
- Routine Treatment

R. Handford & Colleagues
H.C. P.C Registered

Bishop's Stortford - 16 Hockerill Street

01279 652249

www.feet.org.uk

Binwash
We clean
your
wheelie
bins!

Commercial & Domestic



Low cost & highly efficient service!

Professional machinery

4 weekly schedule or one-off clean

High pressure wash and dried

Disinfected and deodorised

www.binwash-uk.com

01799 529899

enquiries@binwash-uk.com



Street Dance
Pop Singing
Acting

**FREE
Trial
Offer**



New classes in
Elsenham

For more details:

Tel: 01376 331543

Email: admin@rascals-uk.com

Web: www.rascals-uk.com

Fun classes
inspiring Confidence,
Character & Creativity
for children aged 3-12yrs



**DECORATING SERVICES
ALL ASPECTS OF DIY**

NO JOB TOO SMALL

For a friendly reliable service
Just Ask.....

GARY KING

Home : 01279 850001

Mobile : 07951 452602

g.king962@btinternet.com

DEVELOPMENT DEVELOPMENTS

By *Graham Mott* ☎ 812516 ✉ motts@grahammott.plus.com



Some progress has been made on Uttlesford District Council's new Local Plan. It is intended that it should at last replace the extant version, which was issued as far back as twenty years ago, and, in the words of one Appeal Inspector, is now 'painfully out of date'. UDC have answered the Inspectors' 'Initial Comments and Questions', and a timetable has been published. The hearing will be over seven days at Council offices in Saffron Walden from 10 June to 19 June, with some later reserve days. Anyone who made a representation to the most recent consultation ('Regulation 19') can send a statement to the programme officer, Ian Kemp, ian@localplanservices.co.uk by Wednesday 14 May, with a further option of speaking at the hearing. But written or spoken representations are restricted to matters on which a submission has been made already, with the additional caveat that it should add to what has been said previously. UDC hopes that the plan will be adopted around April 2026.

The question of whether to respond creates a dilemma. Uttlesford desperately needs a new Local Plan, having made the attempt twice and failed. They are now hard up against a Government deadline - if this attempt is rejected, then the number of new homes to be built over the plan period jumps from 675 pa to 805 pa. The other constraint is the manner in which the Inspectors have invited responses. They have issued a series of questions to be answered about the 'core policies' as drafted, rather than just inviting further comments. Thus if you want to add something which you feel is important, you need to fashion it as an answer to one of the questions. There is therefore uncertainty as to how vehemently Elsenham and Henham should object to the further allocation of 110 homes on the Bloor site.

Talking of Bloor Homes - we wish we didn't have to, but sometimes it's unavoidable - it has become evident that they made good on their undertaking to justify the naming of their main thoroughfare as 'Crocus Drive' by planting bulbs around their entrance, which duly appeared on schedule. To my eye there should be at least five times the number, but perhaps they'll spread, in the manner of Bloor Phase 1, followed by Phases 2 and 3. Regarding Phase 2, there is a question as to whether they have in fact officially commenced. Developers always seem to start by moving vast quantities of earth into large mounds and then moving it back again. One such structure was compared by a local wag to Ayers Rock, although the effect at sunset is unlikely to draw major crowds of tourists, and it will not remain as an immovable sentinel through the ages. Whether Bloor have given formal notice of commencement to UDC is unknown at the time of writing, and is a matter of some consequence, since they are due to make a major contribution to Elsenham's new Community Centre before starting on site.

JLT ROOFING

07974 953162

All roofing works undertaken, including :

- *Slating
- *Asphalt
- *Tiling
- *Flat Roofing
- *Leadwork
- *Fascia and Soffit
- *Guttering

*All works fully guaranteed *

PROFESSIONAL RELIABLE AFFORDABLE

Please contact for a free no obligation quote:

07974953162 info@jltr roofing.co.uk

Luxury Toilet Hire (UK) Ltd



Whether you are arranging a wedding, private party or corporate event, let Luxury Toilet Hire (UK) Ltd provide you with the perfect toilet facility to make your occasion a memorable success.

Cesspit emptying also undertaken.

Tel: 01371 873003 or 01279 504638

Email: info@luxurytoilethire.co.uk

Web: www.luxurytoilethireltd.co.uk



We also hire out mobile fridge and freezer units.



Please contact us for a quote:

Tel: 01371 873003 or 01279 504638

Email: info@chillermatic.com Web: www.chillermatic.com

CARPETS 2 U

Carpet, laminate, Lvt, vinyl, karndean
All types of flooring done

The best for less

Latex floor levelling, plyboarding preparation
Old uplifted and disposed of
Plenty of choice brought to your home

I try to give the best quality for your budget.
30 years' experience

Steve 07939 739845
Carpets2u@icloud.com

ELSENHAM VILLAGE HISTORY SOCIETY

By Mike Rea, Secretary ☎ 813634 ✉ evhs12@hotmail.co.uk

🌐 www.elsenham-history.co.uk



At our March meeting, Ray Franklin gave us a talk on the history of our village church, St Mary the Virgin. The earliest part of the building has been dated to 1110, although a record exists of a church in Elsenham in 1070 when it was gifted to the Abbey of St Stephen in Caen, Normandy. The original building was very likely built on the site of an earlier Saxon church and was constructed from stone blocks, probably imported from Northern France, the rest being flint and rubble and a number of Roman tiles or thin bricks. The tower and South porch were added in the 15th century and the vestry or North porch was built by the Victorians. There are two fine examples in the North wall of the original Norman windows, small, high up and originally open to the elements! The large East window is 15th century although the stained glass is modern. It may have contained stained glass in Mediaeval times but that has long disappeared. There is however a small piece of early stained glass in the South window of the Chancel depicting a leopard's head. This may be the only surviving fragment of the original East window.

There are four bells within the tower. The treble was cast by William Culverdon, a Master Founder at the forerunner of the Whitechapel Bell Foundry between 1506 and 1522. It isn't possible to date the bell better than that. The next bell to be cast was the Tenor in 1572 by John Greene (or Grene) a "Hertfordshire Bell Founder" possibly at Hitchin, although this is not certain. The third bell, the Second, was cast by John Dier at the Hitchin foundry in 1600. These three bells are known as ancient bells having been cast in the 16th century or before. The last bell in the set, the Third, is very much a "Johnny-come-lately" having been cast in 1819, again at Whitechapel by Thomas Mears another Master Founder. The bells served St Mary's well until 1958 when safety concerns meant the bells had to be lowered to allow repairs to be made to the tower. Lack of funds meant the bells could not be replaced for swinging so they were rehung for chiming.

This note can only be a small snapshot of the church history and the very many items of interest that are to be found therein. Our late Founder, Gordon Barker, said that whenever one visits the church there is always something new to be seen as the light at different times of the day, and through the seasons, reveal different patterns within the fabric of the building. How right he was.

Looking ahead, I hope you can come along to our meeting on Wednesday 11 June at 8pm in the Memorial Hall. The speaker for the evening will be Mark Ratcliff who will tell the fascinating story of Camp 116 near Hatfield Heath. Why was it built, who for, who lived there? Come along on the night and all will be revealed.

Visitors are always welcome at our meetings for a very modest two pounds but even better, membership still costs just five pounds for a full year's meetings.



Options Hair Design
2 Ambrose Corner, Elsenham
01279 812665
www.optionssalon.co.uk

At Options Hair Design we work hard to provide the very best of care to our clients.

From the moment you enter our salon our aim is for you to feel like the most confident and beautiful version of yourself.

Our dedicated and talented team of professionals use the very best and innovative, organic products to achieve the look that you want for your hair. We work with you to achieve this as we believe that confidence comes from a hairstyle that you are happy with.

Our team of five stylists each bring with them a wealth of experience, and each display their own creativity whether in colouring, cutting, styling, or finishing.

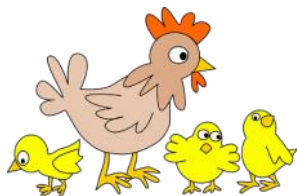
Our ethos is that the salon experience we provide ensures you leave feeling relaxed, pampered and confident.

YOUNG'S

WINDOW CLEANING SERVICE

**We specialise in residential properties offering a quality
and regular service for exterior and interior cleans
Serving the Elsenham community for the last 10 years**

**Call or text Malcolm for a FREE quote
07817 481901**



Daisy May's Farm

Hall Road, Elsenham, CM22 6DN

Life has been so exciting on the farm recently. We have a steady flow of baby animals being born and some of our customers have even been lucky enough to see this happening!

We are open every day, and not only can you come and see all the babies, but you can also feed the lambs their milk by bottle (12 noon, 2pm and 4pm). You can also hold the adorable chicks and ducklings and get to know them better.

The lambs might look like butter wouldn't melt in their mouths but trust me, come lights out it's like a scene from Shaun the Sheep.....absolutely hilarious!

There are lots of other animals to see and feed and there are so many activities to enjoy on the farm. You can explore the woodland trail, enjoy a train ride (11am, 1pm and 3pm; costing £2 per person), play on the activity equipment, splash in the stream and much more.

We also have home-cooked food and refreshments available, so all you have to do is come and enjoy yourselves!

There is no need to pre-book and entry is only £6 each, but please be aware we have **no credit card facilities**. Most importantly, **WEAR WELLIES** if it's wet!

If your **child wants a party to remember**, then why not book one with us? We can offer a truly individual occasion that they can enjoy with their friends and all our lovely animals.

We also **welcome school parties** and can tailor the visit to suit your needs, so do get in touch to find out more.


Always keep an eye on our Facebook page for animal updates and other important information.

We **always** need help in so many ways, particularly when there is **so** much to do. So if you have a little time to spare, **please** get in touch, we would **love** to hear from you. Please contact ' 07747 787973 or take a look at our website 8 www.daisymaysfarm.org to find out more. Thank you so much.



**ROTAVATING
NEW LAWNS LAID
ALL GARDEN WORK
UNDERTAKEN
CALL FOR FREE QUOTATION**

 **01279 718555**

 **07930 188920**

**WE PUT THE HOT IN YOUR
WATER & THE HEAT IN
YOUR HOME**

- Central Heating, Boiler replacement
- Boiler servicing & Repairs
- General Plumbing



Call Mark - 07908005478

Email - nelsonplumbingheatingltd@gmail.com

**Nelson & Sons Plumbing
& Heating LTD**



Elsenham Tots & Toddlers Group



We meet in the Memorial Hall on Elsenham Playing Field

Wednesdays at 9.45am to 11.30am (Term Time only)

**All are welcome - Mums to be, babies & toddlers up to 5years - with
mum or dad, grandparent or carer**

MEET OTHERS

**We have a very safe and friendly environment in which to play
and have fun**

Drop in for a chat and a coffee - Your first week is free

**Then it's £3 per adult & first child,
50p per additional child over 12 months**

**Please message Dawn on 07944 841358 for more
information**

Lots of Toys

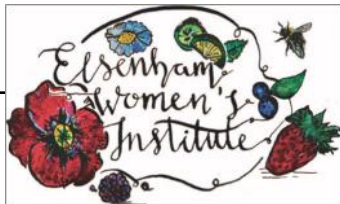


Elsenham Tots and Toddler Group

Have Fun

ELSENHAM WOMEN'S INSTITUTE

By Moyra Jackson ☎ 647351



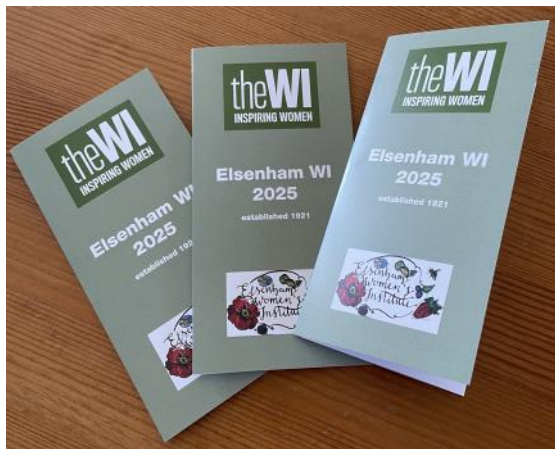
Our new membership year got off to a flying start with a number of new members adding to our ranks.

I can remember the first time I came along to Elsenham WI. It was the first WI I had ever attended and believe me I did not come along willingly! The president at the time was the wonderful and very much missed Avril Braidwood. A chance meeting in the Post Office resulted in Avril telling me that I would really enjoy the WI and she would call for me that Thursday. Against all the odds I really did enjoy it. I have made so many fabulous friends and tried activities I would never had dreamed of doing before.

That meeting was an Annual Meeting and by coincidence, this month is our Annual Meeting. This is when we choose our committee and from that committee select a president. It will come as no surprise that there will be a lot of talking and refreshments too.

Our last meeting was the amazing Susan Widlake. Susan is a milliner and brought along a selection her gorgeous hats, telling us about how hats are made and what her inspiration was for each creation. We were then invited to try on the hats – we did not need to be asked twice!

Coming along to Elsenham WI is a really good way to make friends especially if you are new to the area. The 'Jam and Jerusalem' traditions of our formation in 1921 have allowed us to grow and develop into the modern and forward-looking WI that we are today. We are happy to dispel any of the stereotypes associated with the WI – but our cakes are delicious! Why not come along (or come back) – visitors and new members are always welcome and you can join at anytime throughout the year.



Details of our programme, events and activities can be found on Facebook, Twitter and Instagram – search for Elsenham WI. Visitors are welcome to our monthly meetings so please come along. We meet at 7.45pm on the third Thursday in the month in the Memorial Hall.

Elsenham WI – There's a lot going on!



The Hair Loss Clinic
North Hall Road, Ugley
07957 166436
www.hairlosslaserclinic.co.uk

The Hair Loss Clinic is a company set up to provide information, advice, support and above all solutions for people experiencing hair loss. Not only do we provide realistic and workable solutions to those suffering from hair loss but we are also specialists in after and on-going care for hair loss, giving you the very best support. We can help you through your journey from hair loss through to aftercare if your hair grows back. We provide a personalised service and will recommend the course of treatment or other solutions most appropriate to you.

We provide information, support and advice about your hair loss and identify the factors you will need to consider when choosing which solution is suitable for you.

We provide guidance on cutting and styling of your wig or integration piece and advice on what to do when your hair starts growing back.

Monthly Trichologist clinics are held with Eva Proudman, MIT IAT. Eva is widely known both in the UK and Internationally for her work with hair loss. She has appeared on TV many times and supports many major hair companies with her research into hair loss. All consultations are private and last for between 45 minutes and 1 hour; during this time all relevant areas of health, diet, lifestyle, family history, hair care regime will be discussed along with an in depth examination, including the use of a specialist scalp camera to arrive at a diagnosis and treatment plan.

Whatever the cause of your hair loss or the extent of the hair loss, we are here to help you.



Oven Cleaning Specialists

01279 89 89 96

we accept cards!

Make your oven look showroom fresh with a professional clean from **Clear Ovens**. Our fully insured expert technicians will make it shine like new.



BEFORE **AFTER**

Find us on:
facebook

Instagram

MAA TOC
The Association of Approved Oven Cleaners

FSB
MEMBER OF THE FEDERATION OF SMALL BUSINESSES

Covering Sawbridgeworth, Harlow, Epping, Great Dunmow, Braintree, Stansted, Bishop's Stortford and surrounding areas.

01279 89 89 96 or visit us online at
www.clearovens.co.uk

The difference is clear

DISTRICT COUNCILLORS' REPORT

✉ Cllrdonald@uttlesford.gov.uk

☎ 07941 880279

✉ Cllrlees@uttlesford.gov.uk

☎ 07713 074656



Spring has Sprung, the sun is shining, and we are feeling grateful to live in a vibrant, caring village only a stone's throw away from Saffron Walden, voted the best place to live in 2025 by The Sunday Times. In these turbulent times it is important to surround ourselves with some positivity, so in that vein we would like to celebrate the villages' community groups and their volunteers and thank them for their hard work in making our villages a great place to live. We are proud to have been able support the following organisations with donations from our Ward Initiative Fund.

Elsenham Ladies Rounders Club
The Rugby Club
Elsenham Primary School
EAGLES
The ECA
Elsenham Village Café
The Scouts

If you are a member of a community organisation that would benefit from a small donation, please contact us and we will try to help. We have held over some of our funding for this financial year as it will be the last year of this initiative.

Housing repairs and Maintenance

As of April, UDC started its new contract with **Axis Europe** for the repair and maintenance of its housing stock. This means that its joint venture with **Norse** has come to an end. This change represents UDC's commitment to delivering high quality property maintenance services to its tenants.

Housing tenant census activity

UDC have commissioned a specialist market research company to carry out a census-type exercise with housing tenants. The purpose of this exercise is to update existing data and to collect any new information about tenants, particularly those who have any vulnerabilities so that we can offer a more bespoke service. The company carrying out the survey on our behalf are called **Acuity**. They will be contacting tenants by telephone and email very soon. They will **not** be asking for things such as financial information. If any tenants are unsure or are concerned about being contacted, they should call their housing officer or the Council direct.

Uttlesford have been granted £244,000 from the Rural England Prosperity Fund, which was the highest amount in Essex. There were four categories: support for rural communities, support for rural businesses, cultural heritage development and a digital inclusion programme. A focus on community spaces was intended e.g. the use of village halls and empty pubs. In terms of cultural heritage, the fund would be used to support tourist attraction which was a key part of the economy of Uttlesford.

Continued on page 19



SDS Installations Ltd

AERIAL AND SATELLITE SERVICES
FOREIGN SATELLITE SYSTEMS - CCTV - EXTRA TV POINTS - SKY LINK UPS
PHONE POINTS - HOME SIGNAL DISTRIBUTION - WALL MOUNTED PLASMA/
LCD SCREENS - CABLES SUPPLIED AND HIDDEN

Alan Smith
50 Sunnyside
Stansted
Essex CM24 8AX

01279 279012
07771 881042
sdsinstallations@hotmail.com
sdsinstallations.com

NEW BEGINNINGS COUNSELLING

A safe environment to explore your thoughts and feelings

A private practice with parking based in Takeley

Represented by Michele Simpson MBACP

Ever felt sad, overwhelmed, lost or just not quite right? Most people at some point in their lives have felt so overwhelmed that they find it impossible to see a way out of a situation.

My beliefs are that everybody has the resources within themselves, given the right environment, to experience therapeutic change. Give me a call to see how I can help you to improve your life.

Counselling could enable you to have that new beginning
phone: 07956 224954 or 01279 879009

email: ms@newbeginningscounselling.co.uk

www.newbeginningscounselling.co.uk

JOHN COLEBY

Experienced Interior and Exterior Decorator

For a friendly, reliable service please telephone

01279 815510 or 0793 9070818

for a free estimate

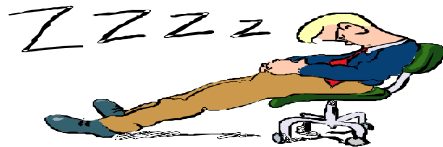
Taylor Computer Services (Stansted)

On-site Computer Maintenance/Repairs

DON'T BE RESTRICTED TO OFFICE HOURS, I CAN VISIT YOUR HOME OR OFFICE
DURING THE DAY, EVENINGS OR WEEKENDS AT A TIME TO SUIT YOU.

Email and Broadband Setup, Data Transfers/Data Recovery, Hardware & Software
Installation, Virus & Spyware Removal & Protection, New PC Setup & Training

Call Derrick on 01279 816418 ~ 07926 289749
Email: Info@tcsstansted.co.uk



BROOM FARM

A resident has enquired about BROOM FARM and asked about the farm where you now find, "Broom Farm Estate."

Broom Farm House, originally known as Broom Manor, was built in the second half of the 16th century and was mentioned in the Domesday Book. It was timber framed and part plaster covered, with fine oak-panelling and doors. A games room housed a full-sized snooker table. The large hall led to a typical farm kitchen. There was a drawing room and spacious dining room. The upstairs contained five bedrooms and there were three small and one large attic room that ran the entire length of the property. The house had two bathrooms. An orchard stood next to the large kitchen garden, and there were stables to the rear. The extensive gardens and lawns met the surrounding fields which formed part of the arable farmland.

In the beginning, the farm covered many acres and encompassed fields on both sides of the railway line and land on both sides of Station Road. The size of the farm slowly contracted, the last farmer being Alan Joyce who managed the land until 1933. Mr George Gane, the last owner of Broom Farm Cottage, acquired the property for the sum of £2,000 in 1934. It was to be his home until 1961/62 when he passed away. The house stood empty for a number of years until it was almost totally destroyed by fire in 1965. I was at School in 1965 and a friend admitted to me he was on the roof that night pinching lead. I cannot recall his name and it was 60 years ago.

The late Dorothy Bateman, a cleaner to Mr Ganes, assisted me with this article.

Ray
Franklin

Continued from page 17

The grant is intended to include town and parish councils who had typically not been engaged in the tourist economy. The funds would be allocated on a rolling as opposed to competitive basis.

We will be holding our usual monthly surgery Monday 12 May at Orwell House, Station Road Elsenham from 18:30. We look forward to meeting residents without making any prior appointment. As ever, of course, we would be very happy to hear from any residents by email or phone should there be anything they think we can help with or answer any questions you may have on our report, or the District Council.

THINKING OF SELLING OR RENTING YOUR PROPERTY?

Please call either of us to find out
how we can help make your move
a whole new experience!

Nicola 07909 548028

Jacqui 07956 513238

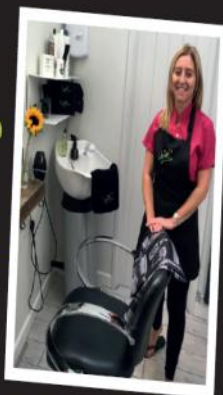


Clare's **Gents hairstylist**
@ Rickling Green

★ Appointments from
7am Mon-Sat

★ FREE easy parking

★ Fully qualified
& insured



Call: 01799 542424
Text: 07791 058406

City &
Guilds
Qualified



Ella Bella BEAUTY

Nails

Acrylics - Builder Gel - Gel Polish

Facial Treatments

Dermaplaning - Microneedling - Galvanic
High Frequency - Chemical Peels
Hydro Gen - Radio Frequency

Brow & Lash Treatments

Brow Lamination- Lash Lift
Brow & Lash Tints

20% OFF

Introductory Offer
Your First Treatment

Limited Time

Hall Close Henham, CM22 6AU

Tel: 07525 475954

Insta: ellabellabeautyuk

ELSENHAM FLOWER SHOW SOCIETY

✉ suewaite2003@yahoo.co.uk or

✉ lynda.jolly@btinternet.com



Plant Sale Saturday May 17 10am - 2pm Elsenham Memorial Hall

Like last year, the committee and volunteers have been busy growing plants for the sale, so we are hoping that you have the date in your diary to remind you to come along to buy them.

We will be accepting cash or card. Please remember to bring a couple of bags with you to carry your new plants home. All proceeds go towards the flower show in August.

In last month's magazine, on the centre pages, were the entry form and rules for the flower show. Here were listed all the competitions and details of fees to enter. All entries must be in by Saturday 9 August. Why not buy some plants from the sale on **17 May** and show them in August at the flower show?

Looking forward to seeing you all Saturday 17 May.

NEWPORT & DISTRICT FLOWER CLUB

Contact Patricia Sanz ✉ flowersanzp2020@gmail.com

Our year got off to a flying start on the 19 February with a demonstration from NAFAS floral demonstrator, Rachael Borenkova who designed six wonderful arrangements on 'Let's go to the Flower Shop', followed on 19 March by Gill McGregor her title 'March Floral Marvel' and her arrangements truly were outstanding. Our AGM on 16 April was a fun social evening with a quiz. Our next Flower Club meeting is on 21 May with a demonstration by Elizabeth Robertson with 'Life's Rich Colours'.

Please come along and bring a friend. We meet on the third Wednesday of the month (except January, August, & December) – 7.30pm at Ugley Village Hall, Cambridge Road, CM22 6HR.

Visitors are always very welcome.



GARDEN HINT *By Sue Johnson*

Plant up containers and hanging baskets with summer bedding. Use quality multipurpose compost, (ideally peat-free) and add a slow-release fertiliser.



COOK UPHOLSTERY

www.taylorandcookltd.co.uk

Don't Replace It ... Re-cover It !



Any Item Reupholstered

Sofas • Armchairs • Headboards • Divans •
Kitchen Chairs • Ottomans

Wall Padding

Create a beautiful feature wall in your lounge or
bedroom • Large Choice of fabrics and designs

Call Gary on 07787 518022

Email: garycook99@btinternet.com

Text or email a picture for an immediate quote

GLYNN'S CHIMNEY SWEEPS

Est. 1995



VACUUM AND BRUSH

**NACS MEMBERS
HETAS APPROVED**

COMPETITIVELY PRICED

01279 424983

www.glynnschimneysweeps.com

hpc (State Registered) Chiropodist

CH09088

Home Visiting Practice

Mrs. Julie Golden

Est. 1994

01279 873492

A professional service at a
competitive rate



**New Classes Every Saturday morn-
ing Elsenham Memorial Hall**

Baby Ballet - 9:00-9:30

(Ages 3-5)

Junior Ballet - 9:30-10:00

(Ages 6-8)

Musical Theatre/ Street - 10:00-10:45

(Ages 5+)



For more information and to
book a free trial please contact:

Lorraine Hedges - 0779 743073

lorraine@dancescene.me.uk

Come along to our new fun
classes and get involved at our
well established dance school!



U3A STANSTED

Registered Charity Number 1148073

✉ stanstedu3a@gmail.com

By Julia Cook



Stupid Boy! Remember Captain Mainwaring's withering put down of Private Pike? Charles Garland's highly entertaining talk at the u3a General Meeting brought this and all of Dad's Army's rich characters to mind.

Garland worked alongside the writers in the making of the much-loved BBC programme. At the well-attended meeting, and using his own excellent impersonations, he brought the sounds of Captain Mainwaring, Private Pike, Private Frazer et al into the room. Clips from episodes of this long-running favourite complemented the fascinating inside story Charles Garland provided. Arthur Lowe's brilliance as an actor, for instance, was demonstrated with a piece of 'separation overlay', (green screening), which allowed Lowe to play both Captain Mainwaring and his ne'er-do-well brother at the same time. For the audience of the time this cleverly provided insight into the main character's backstory, and for the u3a audience, it was evidence of the inventive production techniques of 1975. To conclude this illuminating and delightful talk everyone fittingly joined in a rendition of the familiar signature tune, *"Who do you think you are kidding Mr Hitler if you think old England's done....."*

Another engaging talk is promised at the next General Meeting on 15 May when Graham and Mary Brace will be bringing their photographs of wildlife taken on their travels around India.

Stansted u3a seeks to provide opportunities to come together to learn for fun. Amongst the wide range of classes on offer are those concentrating on physical activity. There are two separate walking groups who meet to explore and enjoy the locality, then there are classes in Pilates, Yoga and Chair Yoga as well as the very popular Line Dancing group.

Do visit the website to find out more about the variety of activities available in Stansted u3a or call 07874 385541.

You are very welcome to try out any of the classes.



Stanstedu3a

ST MARY'S CHURCH ELSENHAM
Office@heuchurch.co.uk
Thought For The Month by *Louis Wilson*

Five years ago, we were coming to terms with all the privations of the COVID-19 lockdowns. Five years have passed, but for most of us, memories of that time are easy to recall.

Eighty years ago, many were coming to terms with the privations of the Second World War. For most of us, those will be far harder to recall. But nothing could dampen the celebrations on 8 May 1945. Pubs were full. St Paul's Cathedral had 10 consecutive services of thanksgiving each packed with thousands of worshippers as the nation celebrated Victory in Europe - VE Day.

Of course, for many there were mixed emotions. Millions were pained by loss and sadness. Within our church family, we have a number who lived through VE Day. But for one woman in particular, it was not a day of celebration, but a time of the most immense hardship.

She was born in 1937 in East Prussia: at the junction of Germany, Poland and Russia. Somehow, she survived the destruction of Germany and Russian conquest, and eventually made her way to the West. Though she has lived in the benefice for many years now, she was only recently interviewed at length about her experiences.

To mark VE Day, we are hosting a conversation with her called *War and Forgiveness: a child's survival in invasion*. It will take place at 7.30 pm on Saturday 10 May at Henham Church. Everyone is very welcome and I do hope you will consider coming - both for her unique perspective and because of the

significance of this, the 80th anniversary of VE Day.

I was struck recently reading (in full) the personal message from Field Marshall B.L. Montgomery C-in-C which was originally read to all the troops of his 21 Army Group in May 1945. It began: On this day of victory in Europe I feel I would like to speak to all who have served and fought with me during the last few years. What I have to say is very simple, and quite short.

I would ask you all to remember those of our comrades who fell in the struggle. They gave their lives that others might have freedom, and no man can do more than that.

Poignant and heartfelt words, which reminded me of another war and victory which came to a climax 2000 years ago. Jesus Christ fell in the struggle for us as he willingly laid down his life on a cross, that others might have freedom from death, sin and judgment.

The evangelist Roger Carswell says: War on a big scale begins with war in all our hearts. Worldwide outbursts of evil are an explosion of the small-scale scandal of sin in each of us. But on the cross, all that wickedness was laid on Jesus. He was forsaken by God so that we might be forgiven. Heaven is not a reward for doing good, but a gift which Jesus purchased and offers to all.

I do hope to see you on 10 May. In the meantime, happy VE Day!

Louis

CHURCH EVENTS IN OUR VILLAGES MAY 2025

Church Services

Sunday 4th May

- 10:30** All Age Service,
Elsenham Village Hall
18:00 Sunday@6, Henham Church

Sunday 11th May

- 08:45** Prayer Book Communion
Elsenham Church
10:00 Prayer Book Communion,
Ugley Church
10:30 Morning Praise,
Henham Church
18:00 Sunday@6, Henham Church

Sunday 18th May

- 08:45** Prayer Book Morning Prayer,
Elsenham Church
10:00 Morning Service, Ugley Church
10:30 Morning Praise,
Elsenham Village Hall
18:00 Sunday@6, Henham Church

Sunday 25th May

- 08:45** Prayer Book Morning Prayer,
Elsenham Church
10:00 Morning Service, Ugley Church
10:30 Morning Praise Communion,
Henham Church
18:00 Sunday@6, Henham Church

Thursday 29th May

- 19:00** Ascension Day Communion
Service, Ugley Church

**War and Forgiveness: a child's
survival in invasion; 7:30pm
Sat 10th May, Henham Church**
Hear Brigitta Clarke relate her WW2
experiences in conversation with
Stephen Bazlinton.
All welcome!

Other Regular Events

SUNDAYS:

**Elsenham & Henham Sunday Club/
Explorers (Reception-Y5)**

**(Y1-Y6) Meet in New Church Hall,
Henham Church, 10.30am**
Sundays: 11th & 25th and in **Old
Frank's, Elsenham: 18th**

Pathfinders (Y6-Y9)

**Henham Church 6.00pm - leave from
service to meet New Church Hall,
Henham Church.**

Sundays: 4th, 11th & 18th

Crammin' (Y10-Y13)

**Henham Church 6.00pm – leave from
service to meet in New Church Hall,
Henham Church.**

Sundays: 4th, 11th & 18th

MID-WEEK AND SATURDAY:

Seekers After School Bible Club
(Y3-Y4) Old Frank's 3.20pm

Mondays: 12th & 19th

Christian Play (Y1-Y2)

Rowan House, Elsenham 3.15pm

Tuesdays: 6th, 13th & 20th

Little Fishes Pre-School Group

Church Room, Henham Church

10.30am

Thursday: 1st, 8th, 15th & 22nd

Little Fishes Pre-School Group

Elsenham Memorial Hall 10.00am

Fridays: 2nd, 9th, 16th, & 23rd

Church Lunch Club

Elsenham Memorial Hall 12.30pm

Fridays: (2nd & 4th Friday of the month):
9th & 23rd

For information on all these events,
please contact office@heuchurch.co.uk

* **HUSCH:** Henham & Ugley School Hall

DANIEL ROBINSON & SONS

Independent Family Funeral Directors & Monumental Masons

Est 1892

Always here when you need us...

- Arrangements in the comfort of your own home, if preferred
- Private Chapel of Rest
- Pre-paid funeral planning services
- Traditional & contemporary funerals to suit your wishes



79/81 South Street
BISHOP'S STORTFORD
01279 655477

www.drobinson.co.uk

S. PERRY CHAPEL END NURSERY

HANGING BASKET & TUB PLANTS
VEGETABLE PLANTS HERBS & BEDDING
SEED POTATOES ONION SETS & SHAL-
LOTS

MULTIPURPOSE COMPOST
70 Litre Bag
£9 each 3 for £23.75

HORTICULTURAL GRIT
COLOURED GRAVELS
PEBBLES COBBLES

WATER SOF-
TENER SALT 25kg
£14 each £62.50 for 5

WE ARE
HERE



COUNTRY VALUE SEEDS
Most 99p per PACKET
Mr Fothergills Seeds
Buy 5 Packs get Cheapest Free

OPEN 9am to 5 pm
MONDAY TO SATURDAY (CLOSED SUNDAYS)
MOLEHILL GREEN ROAD
BROXTON DUNMOW ESSEX CM6 2BW
01279 850771

www.chapelendnurserysperry.co.uk

VEGETABLE PLANTS
BASKET & TUB PLANTS
ALPINES
HERBACEOUS
HERBS
ROSES
SHRUBS
POND PLANTS
AQUATIC COMPOST
GODWIN COMPOST
WILD BIRD FOOD
SUNDRIES

ELSENHAM EAGLES

Elsenham Action Group for Local Environmental Sustainability

✉ elsenhams.action@btinternet.com



Do you want to help Create a Community Garden?

Creating a '**NICER PLACE TO BE...**' by planting pollinator friendly flowerbeds in the small, grassed area on the corner of Isabel Drive and Woodland View.

We already have the members of Elsenham Primary School's Gardening Club growing some annuals for us.

EAGLES Sustainability Group would love to meet you to hear your views and discuss ideas for enhancing this area with beautiful flowering plants. We have a small amount of funding to get this project off the ground, but it is important that community projects involve the community!

So, if you are green-fingered (or not), enjoy gardening (or not) are enthusiastic and have a 'Have-a-Go' attitude, come and join us for a short meeting to share ideas.

Sunday May 18 at 11am
corner of Isabel Drive and
Woodland View, CM22
6GU.

What Three Words:
Most.Tango.Sleepless



Gardening and being outdoors has proven time and time again to help support positive mental health and grow communities. Come and join us from the start!

Memorial Hall Bookings

After looking after the Memorial Hall Bookings so brilliantly for 14 years, Cheryl Rae has decided to hand over to Sue Waite. Bookings for the Memorial Hall can now be made online via the ECA website:

<https://elsenhamscommunityassociation.org.uk/hiring-elsenhams-memorial-hall/>

DREAM, EXPLORE, *Discover*

OFFER
**10%
OFF**

YOUR NEXT BOOKING
USING THIS ADVERT.

YOUR LOCAL *Personal Travel Consultant*

We can look after all your travel requirements including hotels, flights, package holidays, villas, cruises, car hire and much more.

*Subject to availability. Only available on selected deals. Please mention advert when requesting a quote.



Carla Jayne at Hays Travel



cj_haystravel

01279 886731 | 07590 804702 | carla.jayne@hays-travel.co.uk
haystravel.co.uk/personal-travel-consultants/carla-jayne



Hays Travel



alun

design

consultancy

architectural design

planning

project management

interior design

Local architecture
company with over
25 years experience
designing and
obtaining approval
for new homes,
extensions and
conversions

Free consultation
01799 540 600

info@alundesign.com

www.alundesign.com

Neville House, Station Road,
Wendens Ambo, Saffron
Walden, Essex, CB11 4LB

The first butterflies that we see each spring will be one of the species that have over-wintered as an adult. Often the first seen is the Brimstone. They spend the winter hidden amongst evergreen foliage and emerge on a sunny day. We see the bright yellow male flying as it establishes a territory and looks for the much less conspicuous female which is a very pale green colour.

The other early butterflies we are likely to see are the Small Tortoiseshell and the Peacock.

Both these species actively seek sheds and other outbuildings as places to hibernate during winter. At Aubrey Buxton we must be careful in the shed during winter as there are always hibernating butterflies on the underside of wooden panels or even the wheelbarrow. If you find them in your shed, they

are best left undisturbed. They should find their own way out when they are ready.



The Peacock butterfly has dark camouflaged undersides that conceal it from predators as a first line of defence. If disturbed the second line of defence is to flash the wings open to reveal bright eye spots whilst simultaneously rubbing the forewings against the hindwings to produce a hissing sound. In this way it hopes to frighten away an approaching mouse or bird which might otherwise eat it.

A new and exciting (at least for me) discovery was made in the reserve. On a sunny April morning I was on the path carefully studying some small disturbances in the pond and expecting to see a frog or toad. But what I saw was a Water Shrew actively hunting for invertebrates under the water and then popping out onto a log to eat its meal. Take your time and keep quiet and you may also see this lovely little creature.



T.J. Patmore
Building Services

Extensions – Loft Conversions
Roof work – Carpentry – Roof Tiling
First and second fix carpentry
Kitchen fitting
Built in wardrobes
Decorating interior and exterior
Floor and wall tiling
Fencing – Decking – Patios
Supply and fix u.p.v.c. windows
House maintenance

**Call Trevor for friendly help, advice
and FREE estimates**

mob 07932 666224



S.E.P



**TREE CARE & GARDEN
MAINTENANCE**

Tree Topping & Felling
Pruning & Pollarding
Hedges cut, Trimmed & Removed
All waste Chipped & Removed
Garden, Garage & Site Clearance
Gravel Driveways & Paths
Fencing
Turf Supplied & Laid
Jet Washing Paths & Driveways
Local Tradesman
20 years experience
For a free estimate Phone
07903 621657
08000 588057
14 Day Cooling off Period



01279 871 777 - 0800 587 2556

6 Newman Road, Little Canfield, Dunmow, Essex, CM6 1GR

MEDIACOMS

Aerial Satellite AV Security

- Aerial Installations
- CCTV & Security Alarms
- Audio Visual Installations
- Wireless & Wired Networks
- Solar Panel Installations
- Sky Installations & Subscriptions
- Freesat Installations & Receivers
- Multiroom Music & TV Distribution
- TV Wall Mounting Services
- Family Run Business



www.mediacoms.co.uk

info@mediacoms.co.uk



For a working farm, a barn is essential to store produce, tools and machinery and to house livestock. The Hundred Parishes has many fine examples of ancient barns which are still in use today, albeit sometimes for a purpose not envisaged when they were built. Some have been converted into homes while others have quite varied new uses.

In 1994, Thorley church purchased a dilapidated 16th-century barn which, following restoration, opened for community use as St Barnabas Centre. At Duddenhoe End, the thatched Hamlet Church started life as a barn.



Hamlet Church Duddenhoe End

Ashdon and Westmill village halls both began life as barns in the 17th century.

Great Bardfield and Great Saling each have an ancient barn that has been converted into a retail outlet with café, respectively The Blue Egg and Timbers.

In Chrishall, the Red Cow pub offers accommodation in the adjacent 500-year-old thatched barn.

In Little Easton, the Countess of Warwick converted one of her barns into the Barn Theatre. It was used by many famous performers of the early 1900s and still occasionally serves that purpose. On other days it forms part of an events venue and tearoom called Little Easton Manor.

In Great Bardfield, a Grade I-listed 16th century brick barn at Great Lodge now serves as the Anne of Cleves Barn wedding venue.

In Widdington, Grade I-listed Priors Hall Barn is a fine example of a medieval barn, dating from the 14th century and now owned by English Heritage. It is said that 400 oak trees were used in its construction. The large doors on either side could be opened for threshing, with the draught blowing the husks away from the grain. Priors Hall Barn is free to visit and is open at weekends from April to September.



Priors Hall Barn, Widdington

The Hundred Parishes is 450 square miles of northwest Essex, northeast Hertfordshire and southern Cambridgeshire that is largely unspoilt and is richly endowed with many fine examples of agricultural and built heritage. The area has shared a common history which shaped and preserved its distinctive landscape of small and medium-sized farms linked by winding lanes and ancient rights of way to hamlets, villages and then to small market towns. For more information visit www.hundredparishes.org.uk.



Double Glazed Units – **SAME DAY**

- Table Tops
- Shelves
- Emergency Glazing
- Replacement Misted Double Glazing
- Greenhouse Glass
- Cat and Dog Flaps Fitted
- Splash Backs – Any Colour
- Glass Cut To Size
- Emergency Boarding
- Safety Glass
- Mirrors

**LOCAL COMPANY – GREAT PRICES – RELIABLE
PROMPT SERVICE**

Elsenham – Great Dunmow – Bishops Stortford - Stansted



D BONNEY & SONS MANUDEN MOTOR VEHICLE ENGINEERS

MOT TESTING

**ALL MAKES OF VEHICLES SERVICED INCLUDING FOUR WHEEL
DRIVES**

TRW BRAKE CENTRE

DIAGNOSTIC AND FAULT FINDING

WELDING AND CHASSIS REPAIRS

SELECTION OF USED CARS

CALOR GAS STOCKIST

WE HELP YOU THE MOTORIST WITH A CHEAPER LABOUR RATE

GUARANTEED WORKMANSHIP

FREE COLLECTION AND DELIVERY IN LOCAL AREA

PLEASE RING: MALC, NEIL OR CRAIG

☎ 01279 813315 OR ☎ 01279 815946

STANSTED HALL & ELSENHAM CRICKET CLUB

By David Brown ☎ 831011 ✉ davidl.r.brown@gmail.com



As we look forward to warmer, sunnier weather, everything at our grounds has been prepared and both are looking very good for the matches ahead.

The senior indoor net sessions have finished and coaching has started at our Stansted House ground on Wednesday evenings, starting at 6.30pm. Our juniors have started outdoors at both grounds. The U15s and U13s play at Molehill Green on Tuesdays and Thursdays from 6.30pm. The U14s play at Stansted House on Friday evenings at 6.30pm. The U11s play at Molehill Green on Fridays from 6pm. Our young 'All Stars' group starts at Stansted House on Friday 9 May at 5.30pm for eight sessions. These timings are very dependent on the many league matches that are being arranged.

Many congratulations to Bishop's Stortford Cricket Club on its 200th Anniversary this year. Over the years, our club has benefitted from the 'town' club when players have decided to take a step down from travelling too far, or because they want a less serious cricketing experience. Adrian Brown, Keith Wheatley, Nigel Witherden and Ted Natley are just a few of these players.

We will be holding an evening music quiz in June; something else to look forward to. If you have any interest in joining the club, please contact as above.

FROM THE PARISH REGISTERS

Funeral:

A Cremation Service at Cam Valley Crematorium on 31st March 2025, Aubrey James Thurgood, aged 90 years, formerly of Fuller's End, Elsenham.

Burial of Ashes:

On 7th April 2025 at Henham Churchyard John Herbert Reginald Botterill.

Church Contact Telephone Numbers, E-Mail and Web-Site Addresses

Vicar	01279 850480 louis.wilson@heuchurch.co.uk	Rev. Louis Wilson
Church Office	01279 814285	Anna Hicks
Church e-mail	office@heuchurch.co.uk	
Church web-site	www.heuchurch.co.uk	

Enquiries about thanksgivings, baptisms, weddings and funerals should be made in the first instance to Anna Hicks at the Church Office ☎ 01279 814285.

tdcelectrical

covering all aspects of
domestic electrical installations

contact us for a free estimate

07960 941138

contact@tdcelectrical.com

www.tdcelectrical.com

Mat Duxbury PAINTING

Professional Interior and Exterior Painting Specialist

References available on request

20 Years' experience

Fully Insured

NVQ Qualified and Health and Safety Certified

Local, reliable and friendly service guaranteed

For a free estimate please contact Mat on ☎ 07810 250426 or
email ✉ mat@duxburypainting.co.uk

ELSENHAM



ELSENHAM BOWLS AND SOCIAL CLUB

By David Thomas



Now the 2025 bowls season is under way, both club and league competitions have started for our members. The North West Essex, Essex & Herts Seniors and Ladies League on Mondays and Thursdays are now all regular fixtures during the week. There are also weekend friendly competitions with local clubs and internal club competitions to take part in.

Friday nights are our club social evenings that are open to all club members and also anyone interested in finding out more about our club and bowling. Please join us at 6pm.

If you have ever been interested in finding out more about bowls, our 2025 open day is on Sunday 25 May 10am to 4pm. This is a chance to have a go and find out what is involved in the game. All are welcome to join us on our open day whether you are new to the game and would like to find out more or you are an experienced bowler who would like to join us. Age or ability are not a barrier to bowling, please join us on the 25th.

Our crib team players got to the final of the KO Plate and also the semi-finals in the KO Cup competitions. Both Elsenham A and B teams faced stiff competition in their heats. Congratulations to our players for getting so far in the competitions. Congratulations also to both Birchanger B and the Royal British Legion teams for their successes in the competitions.

Our darts team sessions continue on a Thursday evening all year round. Members of the Super League team will be recommencing their darts every Wednesday from June 5th. If you are interested in joining either of the darts teams, please pop along for a chat when they are playing.

For full details about Elsenham Bowls Club including membership and our opening times please see our website www.elsenhambc.org.uk

Come and join us at the Annual Parish Meeting Friday May 23, Village Hall (School) at 8pm

This meeting is open to all Elsenham residents. There will be reports from
County Councillor – Ray Gooding
District Councillors – Petrina Lees and Bianca Donald
Chair of the Parish Council – Graham Mott
Chair of the Finance Committee – Bob Burlton

Following the reports there will be an **Open Forum**. This is your opportunity to have your say and speak about local matters that concern you.

Any questions, please contact the Parish Clerk Louise Johnson ☎ 07456 791727,
louise.epc@gmail.com

Essex Autospray

Your local Collision Repair Centre - Est 1982

- Free Courtesy Cars
- Free Estimates
- Low Bake Ovens
- Blackhawk Alignment



Tel: 01279 816296 E: info@essexautospray.co.uk

www.essexautospray.com

M11 Business Link, Parsonage Lane,



Kitchens • Bathrooms

Electrics • Conversions

Fully Qualified Experienced Tradesmen

All other aspects of building

Get in touch today for a free estimate

Office: 01279 814296 Mobile: 07714 300920

Email: camwoodhome@outlook.com

www.camwoodhome.co.uk



camwoodhome



ELSENHAM TENNIS CLUB

By Petra Studholme ☎814667



Our new season has started with subscriptions unchanged.

Various packages are available to suit everyone. And you can always try before you subscribe. Book a lesson with Steve, come to cardio or if you feel up for it, contact us to attend a club night.

Adult: £80

Couple: £145

Family: £155

Senior: £50

Student: £45

Under 18's: £20

Non-playing: £10

We have two all-weather courts, floodlights so you can play before or after work. We are situated right in the heart of the village, on the playing field. You will get your own key to access the courts, can book online at your convenience and participate in our club events such as club nights, weekend, or morning play sessions.

Essex Small Club League

The men's match away to Stansted resulted in an excellent, well deserved 9:7 win for Elsenham. Jon partnering Henry and Lewis partnering Gavin fought long and hard and came out on top! Well done guys.

Coaching – individual and group sessions

We have individual and group coaching sessions, cardio run by our dedicated and experienced coach Steve Smith. Get in touch with him via email: stevesmith865@hotmail.com or call/text 07790 561 817. Please note that Cardio is open to non-members. Cardio is a great way to get or stay fit. Our coach's choice of music is sometimes questionable, but everyone is definitely having fun and is getting a great workout.

Hire our courts – open to non-members

Hire our courts to play with friends and family - £3 per adult, and 50p for under 18s. You can email us for availability, but please, if possible, give us 24hrs notice as we need to arrange to open the courts

Tennis Club Weekly Activities

Tuesday evening – 6.30pm cardio tennis
(non members welcome)

Tuesday evening– 7.30pm club night

Wednesday morning – 10am causal play

Thursday evening – 6.30pm cardio tennis

(non members welcome)

Thursday evening – 7.30pm team practice
sessions

Friday morning – 10am casual play

Sunday afternoon – 2pm casual play



☎ 01992 450356

☎ 07961 882027

✉ tdmaintenance@btinternet.com

www.tdms-driveways.com

Block paving specialists. Black and red tarmac. Hand and machine laid tarmac. Turfing and fencing. Residential and commercial. All work guaranteed. Free estimates.



Advertise your business
in Elsenham News
Contact us at

elsenhamnews@hotmail.co.uk

MASKALLS TREE SURGERY

Small family business

**Big expertise
in trees**

Call George

M: 07982 601 570 | T: 01279 819 127

email: george@maskalls.co.uk

www.maskalls.co.uk



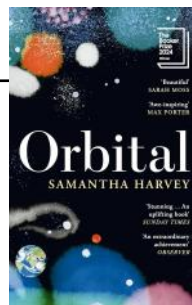
**All types of tree care & hedge cutting undertaken.
Call for a free estimate.**



ORBITAL BY SAMANTHA HARVEY

Reviewed by Marion Giles for Elsenham Book Group

“Life on our planet as you've never seen it before. A team of astronauts in the International Space Station collect meteorological data, conduct scientific experiments and test the limits of the human body. But mostly they observe. Together they watch their silent blue planet, circling it sixteen times, spinning past continents and cycling through seasons, taking in glaciers and deserts, the peaks of mountains and the swells of oceans. Endless shows of spectacular beauty witnessed in a single day.



Yet although separated from the world they cannot escape its constant pull. News reaches them of the death of a mother, and with it comes thoughts of returning home. They look on as a typhoon gathers over an island and people they love, in awe of its magnificence and fearful of its destruction.

The fragility of human life fills their conversations, their fears, their dreams. So far from earth, they have never felt more part - or protective - of it. They begin to ask, what is life without earth? What is earth without humanity?” So says the blurb on the back of the book.

Stunning... An uplifting book . *Sunday Times*

This was the choice of the book group this month.

The Amazon AI summarises: Customers praise the writing quality as lovely, intricate, and precise. They describe the book as fantastic, brilliant, and extraordinary. The writing is thought-provoking and engrossing, making it an interesting and entertaining read. However, some readers feel the story lacks a clear plot or story arc, making it repetitive and boring.

Orbital is a close documentation of twenty-four hours in the lives of two women and four men, as the space station spins through sixteen orbits, working its way over continents, islands, seas and deserts, during sixteen sunsets and sixteen sunrises (a helpful map at the start shows you their journey). At the centre of everything is what they see through the windows. The descriptions are vivid and we get a sense of the vastness and vulnerability of our planet. They witness the build up of a super-typhoon in the Pacific and report it back but are powerless to do anything about it. At first, it is interesting to note the places they can see, but then it does begin to just feel like lists of countries at different times of the day.

So we follow their routines of cleaning and maintaining the craft, performing vital exercises plus carrying out scientific experiments. They follow the launch of a new moon-landing expedition, envious of their fellow astronauts. They fret about home and families, treasure the few mementoes mounted around each of their individual cramped sleeping quarters. They just go round and round and round... Lots of characterisation and descriptions but no plot.



Now it is getting warmer, and we are getting excited about summer, why not celebrate by visiting the Farmers Market on Saturday May 31 12.30-2.30pm?

We have a great range of products and we try hard to ensure that we only sell consumable produce or allied products by small independent sellers. Everything is as local as possible. Our sellers can vary from month to month and their products can also be seasonal, but the quality is always tip top with something for everyone. So, if you haven't been for a while, do pop by. You will not be disappointed.

If you are not sure you want anything, come for a coffee and cake and a browse. It's a win win! Most of the produce is homemade, so not only do you get these fabulous treats once a month, you are also supporting local businesses as well as coming together with our fabulous community, you might even make a new friend!

The markets for the rest of the year are:

June 28

July 27

August 30

September 27

October 25

November 29 (all things festive & more!)

We look forward to seeing you there. No charge for entry; just enjoy and immerse yourself in all the gorgeous produce!

Elsenham Farmers Market Team



FRUIT LOAF

Fruit loaf is featured in the Baking Section of this August's Flower Show, so I thought this might be a useful recipe to try.

Really easy to make and tastes delicious sliced and spread with a little butter .

FRUIT LOAF (cuts into 12 slices)

8 oz (225g) self-raising flour
Pinch of salt
4 oz (115g) block margarine
Grated zest of 1 lemon
4 oz (115g) caster sugar
2 oz (55g) currants
2 oz (55g) sultanas
2 oz (55g) glacé cherries, quartered
1 large egg, beaten
4 to 5 tablespoons of milk

Grease a 2lb (900g) loaf tin or 6-inch (15mm) cake tin and line the base with baking parchment. Heat the oven to 180°C/160°C fan/gas 4.

Sift the flour and salt in a bowl and rub in the margarine. Add the lemon rind and sugar and mix well. Add the fruit.

Mix to a firm dropping consistency with the beaten egg and 4 tablespoons of milk, adding extra milk if the mixture will not fall easily from the spoon.

Place the mixture in the tin, smoothing the top.

Bake for 1 hour until firm, checking if a skewer inserted into the centre comes out clean. Cool in the tin, then turn out onto a rack and peel off baking parchment.

CHEF'S RECOMMENDATIONS:

For a change, use 4oz vanilla sugar instead of the caster sugar, omitting the lemon rind. Never waste the juice of a lemon if you are only using the zest. The juice will freeze well and comes in so useful baking other cakes or adding to curries.

Editorial Information

Articles

The **last day** for editors to receive articles, advertising and letters, which must contain the author's name and address (which may be withheld), is the 8th of each month.

Articles should ideally consist of a half page of A5 or a full page of A5. Articles over these sizes or letters containing more than 500 words may be edited depending on space.

Copy submitted after the 8th may not be accepted but will, if deemed appropriate, be held over to the next month. We are happy to receive hand written articles which ideally should reach us earlier than the 8th to allow for scanning etc.

Dates for the Diary must include date, event, venue and time.

Please submit all articles, adverts, letters and queries to the editorial team at:
elsenhamsnews@hotmail.co.uk

General Notes

Whilst every effort is made to ensure that information is correct, the editorial team cannot be held responsible for any inconvenience caused through errors or omissions.

The views expressed within this magazine are not necessarily the views of the editorial team or Elsenham Community Association (ECA).

The editors and the ECA can accept no responsibility for the goods or services advertised in the magazine. Advertisements are included in good faith. The editors reserve the right to allow replies to letters/articles to be made in the same edition when appropriate.

The editors' decision is final.

Wanted/For Sale items: individuals may submit short details of items wanted or for sale etc at no charge. These will be included in the next available issue of the magazine subject to space and acceptance by the editors.

Subscriptions

Elsenham News is available by email (on a pdf) at no charge, or through the post at a cost of £13 per annum. Contact **elsenhamsnews@hotmail.co.uk**

Advertising

The costs are as follows:

	Single Insertion	Annual Cost (11 issues)
Half Page	£20.00	£190.00
Quarter Page	£10.00	£100.00
Inside Page	£50.00	n/a
Back Page	£75.00	n/a

Village organisations attract reduced rates, £5 for ¼ page. Half and full-page adverts attract full rates.

To place an advertisement:

If you have any queries, please email us. Please send your advert as Word or Publisher via email to:
elsenhamsnews@hotmail.co.uk

Advertising Editor: TBA

Business Advertising

Cheques should be made payable to "**Elsenham Community Association**".

Editorial Team:

**Gary Williams
Emma Bailey
Marion Giles
Patricia Davis
Anne White
Nyaradzo Chabata
Angie Wenlock
David Newland**

Previous issues of Elsenham News are available on the ECA Website

www.ElsenhamCommunityAssociation.org.uk

UPCOMING EVENTS

FOES Summer Fete, Elsenham Primary School field, June 7

Flower Show, Memorial Hall, August 16

VILLAGE CONTACTS

Airport Roadside Parking		0800 731 2385
Beavers	1sthenhamandelsenham@gmail.com	
Bowls Club	Therese Clear	07759 158859
Brownies	elsenhambrownies@gmail.com	
Church Office (Old Frank's, High St, Elsenham)	Anna Hicks	814285
County Councillor (Stansted)	Ray Gooding	813103
Cricket Club	David Brown	831011
Cub Scouts	1sthenhamandelsenham@gmail.com	
ECA (Chair)	Sue Waite	07956 899326
ECA (Secretary)	Chris Richardson	07940 465627
ECA Website	www.ElsenhamCommunityAssociation.org.uk	
Elsenham Eagles	elsenham.action@btinternet.com	
Elsenham Farmers Market	elsenhamfarmersmarket@gmail.com	
Elsenham Surgery	www.elsenhamsurgery.nhs.uk	814730
Elsenham C of E Primary School	Linda Todd Headteacher	813198
Elsenham Church PCC Secretary	David Hill	812397
Elsenham Fete	ElsenhamSummerFete@gmail.com	
Elsenham Rights of Way website	www.e-voice.org.uk/erowos/	
Friends of Elsenham School (FOES)	Louise Judd	foespta@hotmail.com
Henham & District Garden Society	Moyra Jackson	647351
History Society	Mike Rea	evhs12@hotmail.co.uk 813634
Member of Parliament	Kemi Badenoch	0207 219 5214
Memorial Hall Bookings		
www.elsenhamcommunityassociation.org.uk/hiring-elsenham-memorial-hall		
Neighbourhood Watch Co-ordinator	Frances Lambert	07771 728332
	franceslambertnhw@btinternet.com	
Parish Clerk - Louise Johnson	louise.epc@gmail.com	07456 791727
Elsenham Parish Council Website	www.elsenham-pc.gov.uk	
Police		101
Post Office		812175
Rainbows	elsenhamrainbows@gmail.com	
Scouts	1sthenhamandelsenham@gmail.com	
St Mary's Fabric Fund	Elizabeth Barker	813543
Tennis Club	Petra Studholme	814667
Tots & Toddlers	Dawn Temple	07944 841358
Uttlesford District Councillors	Petrina Lees	07713 074656
(for Elsenham & Henham)	Bianca Donald	07941 880279
Village Hall Bookings	elsenhamvillagehall@gmail.com	
Womens Institute Secretary	Gill Hathaway	813385
Youth Football Club (Chairman)	Ricky Lambourne	info@elsenhamyfc.co.uk

If you would like your village organisation contact to appear regularly in the magazine, please contact one of the editors, see opposite for details.

THERE'S SO MUCH TO DO AT GWS!



TOPTRACER RANGE

**ADVENTURE GOLF,
FOOTGOLF, LESSONS,
GYM, EVENTS,
9-HOLES & MORE!**

NOW OPEN UNTIL MIDNIGHT FRIDAY'S & SATURDAY'S!



**Golf
World
Stansted**

Visit us now: Golf World Stansted, Hall Road, Nr Stansted Airport CM22 6FL
01279 812 965 ban@golfworldstansted.co.uk