

Elsenham News



**ELSENHAM FLOWER SHOW SOCIETY
ANNUAL PLANT SALE
22 MAY 2021**

elsenhamnews@hotmail.co.uk

May 2021

75p where sold

Please note that following government advice regarding Covid-19, most regular activities that would normally take place in the Memorial Hall or the Village Hall have been cancelled until further notice.

The following groups or activities are suspended until further notice:

Community Choir
Life Drawing
Rainbows
Tots & Toddlers
Yoga

Guides
Line Dance
Shape to the Beat
Village Café, tea, coffee and lunch
Zumba

Some groups are meeting online or in a limited way

Beavers and Cubs
Brownies (restarting 4 May) in the Memorial Hall
Church services and special events (please see page 27)
Little Fishes is meeting in the Memorial Hall
Elsenham Tennis Club activities (please see page 45)
Elsenham & Stansted Hall Cricket Club training & fixtures (see website)
Kick Boxing (on Playing Field)
WI (online, please see page 13)

Parish Council meetings are being held by Zoom. The next meeting is on either **Thursday 6 May or Monday 10 May**. Contact Louise Johnson for information by email on [✉ louise.epc@gmail.com](mailto:louise.epc@gmail.com) or check EPC website.

County Council & Police Fire & Crime Commissioner elections. Vote at the Memorial Hall. Thursday 6th May 7am - 10pm. (Poll card not essential). Covid-19 safety measures will be in place so enter via the double door opposite the Tennis Court. Please wear a mask (unless exempt) and bring your own pen or pencil.



Mobile library visits to Elsenham have resumed. Visitors are restricted in numbers so you may have to queue. Face coverings must be worn.

Place: Glebe End. Time: 11.50am to 12.20pm
Day: Thursday
Dates: 13 May, 3 and 24 June, 15 July, 5 and 26 August

THE NEWS REPORT

From The Editors



We've seen a bit of sunshine since the last magazine went out, and hasn't it made a difference? That plus the further easing of lockdown seems to be improving spirits.

We have lots to share with you in this month's magazine, which we hope will also keep you cheerful.

Some village societies are starting real life meetings again, which is great to hear. Check details on p2 and see the U3A update on p29. We are delighted to welcome back the Scouting update this month, with a round-up on how they have kept the Beavers, Cubs and Scouts engaged and inspired over the last year.

Congratulations to everyone who has had to find new ways of running groups and activities, it has meant a great deal to people at a difficult time.

The Elsenham Flower Show Society has its Plant Sale this month, see p5-7. You will be able to start ordering as soon as the magazine is delivered so don't delay. Orders can be placed online including on Facebook. Funds raised support the Flower Show itself, which takes place in August.

The Village Fete is on Saturday, 26 June. The organisers are working hard to ensure that it will be Covid-safe as well as fun-packed. Volunteers are needed to help on the day and there is still time to book a stall for your business or village organisation, or to promote your business in other ways. See p21 for details.

Not such good news everywhere in the magazine, sadly, with the Parish Council discussing vandalism in the play area on Isabel Drive p9, and Development Developments reporting on plans for further house building, p17.

Happy reading, see you next month,
The Editors

Regular features

100 Parishes	23	History Society	31
Book review	43	Natural Outlook	39
Church letter	26	Parish Council	9
Cookery Corner	49	Ray's Reflections	41
Development Developments	17	Sports clubs	45/47
District Council report	11	Women's Institute	13

f @cjtravel20
t cjtravel1981

DREAM, EXPLORE, Discover

OFFER
**10%
OFF**

YOUR NEXT BOOKING
USING THIS FLYER

YOUR LOCAL *Independent Travel Agent*

We can look after all your travel requirements including hotels, flights, package holidays, villas, cruises, car hire and much more.



*Subject to availability. Only available on selected deals. Please mention flyer when requesting a quote.



CJ Travel

Contact us now for special offers

07590-804702

cjtravel20@gmail.com



IndieTravel.com



All types of double glazing repairs, maintenance & installations, including emergency callouts. At replaceglaze.com we provide a reputable, family-run double glazing repair & installation service.

Our services include:

- Double glazing repairs & maintenance
- uPVC door installation
- Windows & door handles
- Locks & hinges
- Broken / sealed units
- Mistied units
- Patio door wheels
- Door adjustments & lubrication
- Government spec upgrades
- Safety Glass
- New uPVC double glazed units
- Professional & friendly service

Give us a call:

01279 282 997 or 01371 701 000

✉ info@replaceglaze.com

🌐 www.replaceglaze.com

**FULLY
OPEN**
27th May -
31st October

Cammas Hall Fruit Farm * Tea Barn * Farm Shop



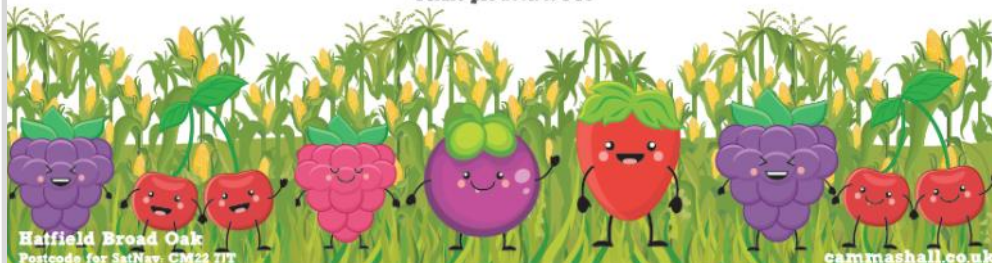
A great fun day out for all the family!

- Pick-your-own & freshly ready-picked produce*
- Farm Shop
- Tea Barn - great coffee and homemade food
- Children's Play Area
- Nature Trail
- Maize Maze (August to October)
- Seasonal Events

Strawberries • Gooseberries • Raspberries • Onions • Blackberries • Blackcurrants • Sweetcorn • Cherries
• Blueberries • Sunflowers • Pumpkins... *when in season*
& other local produce including honey & jam from the farm.

The highest quality fresh produce in beautiful countryside surroundings

*Please pre-book to PYO



Hatfield Broad Oak
Postcode for SatNav. CM22 1JT

cammashall.co.uk

ELSENHAM FLOWER SHOW SOCIETY

Sue Johnson ☎ 812704



ANNUAL PLANT SALE – SATURDAY 22 MAY

Due to ongoing restrictions, our plant sale will be organised in the same way as we did last year, ordering by email, over the telephone or via our Elsenham Flower Show Society Facebook page. A more up-to-date list will be available via Facebook page as we approach 22 May.

34th
YEAR

As last year, once we receive a message from you, we will respond to discuss your plant requirements. Ordering will start as soon as the magazine is delivered, on a first come, first serve basis due to some with limited stock, for collection on 22 May. Please note that some outdoor plants should not be put in the garden until nearer the end of the month, especially if frosts are forecast. Plants will be priced at 50p each (unless otherwise stated), correct cash payment on collection would be much appreciated.

If you have any small pots spare, please drop these off at Le Touquet, Station Road or when you collect your plants from New Road.

Here is a list of plants we have grown (to date):

Vegetables:

Broad Beans

Cabbages

Climbing and Dwarf French Beans

Runner Beans: White Lady, Scarlet Emperor, Enorma

Courgettes (£1 per plant)

Cucumbers

Hot Chillis

Sweet Peppers: California Wonder

Tomatoes: Alicante, Cherry Cerise, Garden Pearl, Gardeners' Delight, Ildi yellow

Strawberries

Summer Bedding Plants, etc:

Bedding Begonias

Busy Lizzies

Calendula: Art Shades Mixed

Cosmos: Sensation Mixture

Dahlia: Bedding Dahlias, Dwarf Double Mixed, Bishop's Children

Everlasting Sweet Peas

Continued on p7



Bear & Eden

COFFEE SHOP
EAT. RELAX. PLAY

We're Open For Takeaway!
We are going to reopen fully for takeaway & table service inside and outside on Tuesday 18th May

WE ARE A FAMILY-FRIENDLY COFFEE SHOP,
BASED IN THE HEART OF STANSTED MOUNTFITCHET VILLAGE
SERVING THE BEST LOCALLY SOURCED COFFEE FOR MILES

- TEA, COFFEE & SPECIALITY HOT CHOCOLATES
- FRESH ICE CREAM MILKSHAKES
- ORGANIC SMOOTHIES
- CORNISH PASTIES, SAUSAGE & VEGAN ROLLS
- HOMEMADE CAKES, SPECIALITY BROWNIES, NEW YORK COOKIES & AFTERNOON TEAS
- HEALTHY & VARIED BREAKFAST & LUNCH MENU

OPENING HOURS:

9 AM - 4 PM MON TO SAT
10 AM - 4 PM SUN



31 LOWER STREET, BREWERY BARN,
STANSTED MOUNTFITCHET,
ESSEX, CM24 8LN

e: info@bearandeden.com

Please visit our website for more details on table bookings and our Covid guidelines.

WWW.BEARANDEDEN.COM



FIAT 500's For Sale

Top Quality Pre-Owned Fiat 500s

Only 3 miles
North of
Bishops Stortford
in Manuden
CM23 1DQ



www.tq500.co.uk 07785990821



Customer reviews on Autotrader

ANNUAL PLANT SALE – SATURDAY 22 MAY *continued*

Foxgloves
French Marigolds
Gazania: Sunshine Mixed
Geraniums
Helichrysum
Penstemon (50p/£1 for established plants)
Rudbekia: Rustic Dwarfs
Salvia: Hotlips (£1)
Schizanthus: Angel Wings Mixed
Sunflowers
Sweet Williams
Zinnias, multicoloured



Larger Hardy Plants:

Agapanthus seedlings
Daphne - fragrant very early spring shrub (£1)
Hostas – various (£1/£2.00 depending on size)
Hollyhocks
Hellebores
Hydrangeas
Nerine Lilies (bulbs in pots, autumn flowering)

Houseplants:

Peace Lillies
Rubber plants
Small succulents and cacti (various)
Bromeliads



Other:

Rhubarb Bundle four sticks - picked fresh to order - £1

POSTPONEMENT OF OPEN GARDENS

Regrettably, for numerous reasons, particularly issues of safety, we have decided to postpone the Open Gardens again this year. We are concentrating all our efforts on the organisation of the Plant Sale and the Flower Show on 21 August.



N.M.S
*Window Cleaning
Service*

**Cobwebs removed, Windows,
Frames and sills washed,
doors cleaned as required.**

**Water fed pole system
Traditional**

07470291463

HANDY MAN SERVICES

NEW YEAR LOOK
AROUND THE HOME

All decorating in any colours using
Dulux paints.

All new flooring installs any type:
light wood, dark wood and oak.

Electrical new lighting LED, fittings,
sockets, switches change to
chrome/brass.

Alterations to out houses, garages to
extra room, dining room, office and
many more. Extensions.

Call Dennis. Free Quote
07946 231302



BARLEY GROVE
FINANCIAL SOLUTIONS LIMITED

- * Annual Accounts/Book-keeping
- * Payroll
- * Corporate Tax returns
- * Self-Assessment Tax
- * VAT Returns
- * New Business Set up
- * IR 35 advice
- * Construction Industry Scheme (CIS)
- * Making Tax Digital Advice

A PROFESSIONAL AND TAILORED SERVICE TO MEET YOUR PERSONAL
OR COMPANY NEEDS

LOCAL COMPANY

CONTACT US NOW FOR AN INFORMAL DISCUSSION

Tel : 0330 133 0246

Email: info@barleygrove.co.uk

Website : www.barleygrove.co.uk

ELSENHAM PARISH COUNCIL 12 APRIL 2021

By Louise Johnson, Clerk. ✉ louise.epc@gmail.com ☎ 07456 791727



Cllr Jackson read out a statement that had been placed on the Parish Council website.

HRH The Duke of Edinburgh 10 June 1921 – 9 April 2021. We are deeply saddened by the passing of HRH The Duke of Edinburgh; on behalf of EPC, we would like to express our sincere condolences to the Queen and the royal family at this time. Married for 73 years, Prince Philip demonstrated extraordinary dedication and commitment to public duty and as a devoted consort to Her Majesty The Queen. Our sorrow is shared by people across the world as we have remembered with affection and gratitude a lifetime of service by His Royal Highness.

Residents are encouraged to safely pay their respects through the virtual book of condolence that will be available on the official website of the royal family from 10 April. The laying of flowers is not recommended at this time and we would ask people to remember the current government guidelines in place to keep us all safe.

The legislation for councils to hold virtual meetings is due to expire on 7 May 2021, after which any resolution made at a Parish Council's meeting via Zoom, could be changed as being unlawful. Following the government's present guidelines, it is also not possible to hold any face-to-face meetings until after the 21 June 2021, at the earliest. The next Annual Parish Council meeting is either 6 or 10 May, to keep within the Government legislation, EPC will have to bring the date forward.

Police are still investigating the vandalism in the play area on Isabel Drive. The three gates to the play area were damaged resulting in repairs of £700. The police are to interview three boys that were seen in the play area at the time

All the benches in the playing field have now been treated with preservatives. The litter bins cannot cope with the amount of rubbish that is generated in the playing fields and they are often overflowing. The Playing Field Committee will discuss at their next meeting purchasing two extra bins and some form of replacement to store the full waste sacks as the previous double litter bin purchased from Uttlesford has been stolen.

Cllr Minor asked Cllr Gooding when Essex County Council would be given the land from the Section 106 agreement on the Hall Road development, so that a drop off and pick up point for the primary school could be built. Every morning and afternoon during school term there are traffic problems around Hailes Wood and other roads near the school, which will only increase as more houses are built in and around the village. Cllr Gooding said he is trying to bring forward the transfer of the land, and although Essex County Council would prefer children to walk to school, he would support a drop off point in Elsenham if the roads permitted.

The next Parish Council meeting date is to be decided. See p2.

MASKALLS TREE SURGERY

Small family business

Big expertise in trees

Call George

M: 07982 601 570 | T: 01279 819 127

email: george@maskalls.co.uk

www.maskalls.co.uk



All types of tree care & hedge cutting undertaken.
Call for a free estimate.



TAKELEY IRONING & DRY CLEANING

OPENING TIMES
MONDAY - FRIDAY 8AM - 5PM
SATURDAY 8AM TO 12PM

FREE LOCAL COLLECTION & DELIVERY TO YOUR DOOR

Takeley, Elsenham, Henham, Stansted, Felstead, Hatfield Broadok, Hatfield Heath, Sheering, Dunmow, Sawbridgeworth, Broxton, Spellbrook, Molehill Green, Broxton, Little Canfield.

- ✓ WASHING & IRONING
- ✓ IN HOUSE DRY CLEANING
- ✓ 48 HOUR SERVICE
- ✓ DUVETS
- ✓ CURTAINS
- ✓ ALTERATIONS
- ✓ WEDDING DRESSES

The Centre, Dunmow Road (Behind Londis)
Takeley, Bishops Stortford
Herts, CM22 6SH

Email: takeleyironing@gmail.com
takeleydrycleaning@gmail.com

Tel: 01279 871245

© Maskalls - 2021. All Rights Reserved. 01279 819 127

DISTRICT COUNCILLORS' REPORT

APRIL 2021

By Cllr Lees and Cllr LeCount

✉ Cllrlecount@uttlesford.gov.uk

✉ Cllrlees@uttlesford.gov.uk

☎ 07836 346717

☎ 816675



Technically we are in purdah (pre-election period) as we write this, and we do not want to break any of the rules, so we shall focus on voting.

The decision made on 6 May will directly affect you. We urge all to vote in the County Elections, and the Police, Fire and Crime Commissioner elections.

- The decision made in May will directly affect us all.
- It is your money the council is spending – or cutting.
- These are your highways - you use these .
- These are your schools .
- It is your Social Care that is provided.
- They are YOUR Police too.

Your views and opinions are worthwhile. We will have a look at what happens with a non voter.

Election strategist: 1.5m people want A and 1m people want B. But of the A-fans, 55 per cent don't vote. Of the B-people, 90 per cent vote. So let's do B - so your vote does count!

It is not rebelling by not voting, if we all voted it might really mix things up.

It may seem like an old cliché, but women died so women could vote.

Emily Davison was a key suffragette campaigning for British women to have the right to vote. On June 14, 1913, she rushed out in front of King George V's horse at the Epsom Derby and she died of her injuries.

People die fighting for democracy. Imagine them looking at us as you spend the day ignoring the fact there's an election on and moaning about your life.

Councillors are decent hardworking people who actually really want to change things for the better.

No vote is no voice.


S.E.P

TREE CARE & GARDEN MAINTENANCE
 Tree Topping & Felling
 Pruning & Pollarding
 Hedges cut, Trimmed & Removed
 All waste Chipped & Removed
 Garden, Garage & Site Clearance
 Gravel Driveways & Paths
 Fencing
 Turf Supplied & Laid
 Jet Washing Paths & Driveways
 Local Tradesman
 20 years experience
 For a free estimate Phone
07903 621657
08000 588057
 14 Day Cooling off Period



★ ★ ★
Clare *★ ★ ★*
 Gents hairstylist
 @ Rickling Green

- ★ Appointments from 7am Mon-Sat
- ★ FREE easy parking
- ★ Fully qualified & insured



Call: 01799 542424
 Text: 07791 058406

City & Guilds
 Qualified 

D BONNEY & SONS MANUDEN MOTOR VEHICLE ENGINEERS

MOT TESTING

ALL MAKES OF VEHICLES SERVICED INCLUDING FOUR WHEEL
DRIVES

TRW BRAKE CENTRE

DIAGNOSTIC AND FAULT FINDING

WELDING AND CHASSIS REPAIRS

SELECTION OF USED CARS

CALOR GAS STOCKIST

WE HELP YOU THE MOTORIST WITH A CHEAPER LABOUR RATE

GUARANTEED WORKMANSHIP

FREE COLLECTION AND DELIVERY IN LOCAL AREA

PLEASE RING: MALC, NEIL OR CRAIG

 **01279 813315** OR  **01279 815946**

ELSENHAM WOMEN'S INSTITUTE

By Moyra Jackson ☎ 647351



Snow at Easter – whatever next? I must admit as a Scot, that is nothing unusual but I have become used to the very pleasant weather we have down here. I hope all your Magnolia trees survived the sharp drop in temperature.

Our last meeting was very seasonal. The lovely Jane Lappage showed us the basics of modern calligraphy and had us making Easter cards. What a delight this craft was – easy to do and no special pens needed. Jane's enthusiasm for her art was contagious and there were some fabulous results.

Again on a seasonal note, I would like to mention once again the wonderful team in the Post Office for allowing us to have a craft stall with an Easter theme. Karen, Colin and Dean - you are amazing, and a huge thank you to all of you who bought up the little chicks, baskets, bunting and re-homed the bunnies! Funds raised will enable Elsenham WI to continue to engage quality speakers for their meetings, run workshops and support village events when we can open up again.



May would normally be our Annual Meeting but we are delaying this until we can be together in the hall. An extra date will be added. The lovely Saffron Summerfield will join us by Zoom on 20 May starting at 8pm. Saffron is a really talented blues singer and guitarist and she tracks her musical journey and also the development of the guitar with "Medieval to Mississippi". The competition is all about your first single. For many of us there was nothing more exciting than record shops, 45s and Radio Luxembourg – we look forward to hearing your stories!

The good news is this is likely to be our last fully virtual meeting as (fingers crossed) we hope to be back in the Memorial Hall for our meeting in July. Our meeting in March 2020 was cancelled at short notice and by May we were up and running again on Zoom with Nicholas Henderson being our first virtual speaker. Since then we managed to meet that way every month and even successfully run our Annual Meeting. It is 17 months since our last meeting in the hall and I think we are all ready to get back together.

Visitors are always welcome at our meetings. Our contact details are at the back of the magazine. We are on Zoom until June. There has never been a better time to come and join us – we look forward to welcoming you!

**Facebook: Elsenham WI Twitter: @elsenhawmi Instagram: elsenham_wi
Email: elsenhamwi@gmail.com**

Elsenham WI – There's a lot going on!

ALLASPECTSTREESERVICES.CO.UK



All Aspects Tree Services

TREE SURGERY - STUMP GRINDING
HEDGE CUTTING - FENCING

01279 755545 07940 231964

INFO@ALLASPECTSTREESERVICES.CO.UK

S. PERRY CHAPEL END NURSERY

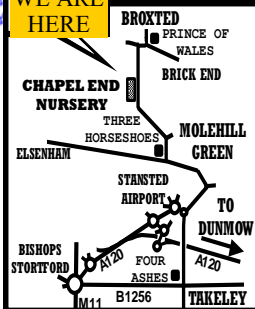
VEGETABLE PLANTS HERBS & BEDDING
HANGING BASKET & TUB PLANTS
TREES, SHRUBS, ROSES, FRUIT BUSHES

DECORATIVE BARK
FARMYARD MANURE
SEED & CUTTING COM-
POST

HORTICULTURAL GRIT
COLOURED GRAVELS
PEBBLES COBBLES

GODWIN'S
MULTIPURPOSE COMPOST
60 Litre Bag
£4.75 EACH 3 For £12

WE ARE
HERE

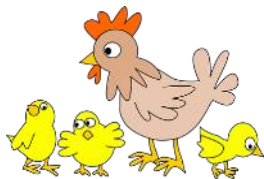


COUNTRY VALUE SEEDS
From 99p per PACKET
Mr Fothergills Seeds
Buy 5 Packs get Cheapest Free

OPEN 9am to 5 pm
MONDAY TO SATURDAY (CLOSED SUNDAYS)
MOLEHILL GREEN ROAD
BROXTED DUNMOW ESSEX CM6 2BW
01279 850771

www.chapelendnurserysperry.co.uk

VEGETABLE PLANTS
BASKET & TUB PLANTS
ALPINES
HERBACEOUS
HERBS
ROSES
SHRUBS
POND PLANTS
AQUATIC COMPOST
GODWIN COMPOST
WILD BIRD FOOD
SUNDRIES



Daisy May's Farm

Hall Road, Elsenham, CM22 6DN

www.daisymaysfarm.org



As you may well now know, **WE ARE OPEN** and our animals enjoying seeing all our lovely visitors or what. They are all having such a super time being fed and having a fuss made of them, so please keep on coming!

We are open every day except Wednesdays and Sundays from 9am to 3pm and you have to book in using our booking system via our website, so don't miss out. 📱 www.daisymaysfarm.org.

At the farm you can visit all our animals, including all the babies and those in the small animals' enclosure. You can also have fun on the play equipment, play in our den building area and have a splash in the stream, visit our

old friends the horses and explore our Woodland Walk - there is such a lot to do, so make sure you don't miss out!

We have lambs, kid goats, chicks, piglets, ducklings, so don't leave it too long as they are all growing quickly.

The last year has been really tough, so if you would like to help, you can either buy something from our Amazon Wish List

[;https://www.amazon.co.uk/hz/wishlist/ls/1B5UNRLQREZDL/?ref=lol_ov_le&filter=default&sort=default&viewType=grid](https://www.amazon.co.uk/hz/wishlist/ls/1B5UNRLQREZDL/?ref=lol_ov_le&filter=default&sort=default&viewType=grid)

Or donate to our Crowd Funding page

[;https://www.justgiving.com/crowdfunding/alison-thomson-920](https://www.justgiving.com/crowdfunding/alison-thomson-920)

Anything you can give is **MASSIVELY** appreciated.

If you need eggs, we have LOTS! Pop by and buy ours, they are delicious!

Very best wishes and thank you for your continued support.





**DECORATING SERVICES
ALL ASPECTS OF DIY**

NO JOB TOO SMALL

**For a friendly reliable service
Just Ask.....**

GARY KING

Home : 01279 850001

Mobile : 07951 452602

g.king962@btinternet.com

smnailsandlashes



Sophie May - Nail and
Lash Technician



Home based salon

ACRYLIC EXTENSIONS

BUILDER GEL EXTENSIONS

GEL POLISH

LASH LIFT AND TINT

PEDICURES

KINGSWOOD PLACE
ELSENHAM
CM22 6GX



Cultivated Turf Supplies

**ROTAVATING
NEW LAWNS LAID
ALL GARDEN WORK
UNDERTAKEN
CALL FOR FREE QUOTATION**

☎ 01279 718555

☎ 07930 188920

Taylor Computer Services (Stansted)

On-site Computer Maintenance/Repairs

**DON'T BE RESTRICTED TO OFFICE HOURS, I CAN VISIT YOUR HOME OR OFFICE
DURING THE DAY, EVENINGS OR WEEKENDS AT A TIME TO SUIT YOU.**

**Email and Broadband Setup, Data Transfers/Data Recovery, Hardware & Software
Installation, Virus & Spyware Removal & Protection, New PC Setup & Training**

**Call Derrick on 01279 816418 ~ 07926 289749
Email: Info@tcsstansted.co.uk**

DEVELOPMENT DEVELOPMENTS

By Graham Mott ☎ 812516 ✉ motts@grahammott.plus.com



Towards the end of a meeting of Uttlesford District Council's Local Plan Leadership Group on 23 March, the lead member of the Planning Department said that it was 'time to think about the guiding principles, the strategic objectives, which will inform the Local Plan'. The Chairman agreed: 'That's really when it starts to kick off', and he was encouraged by the agreement of officers to produce a paper on how it might be done. He then showed his commitment to speedy progress by cancelling the next scheduled meeting.

Government Inspectors rejected Uttlesford's previous attempt at a Local Plan in January 2020, making clear that the strategy of focussing new houses in three new 'garden settlements' would not answer, principally on account of the long delivery times involved. What was needed, they said, was something altogether more speedy, in order to meet Government targets. You could be excused for wondering what exactly - or even inexactly - Uttlesford has been doing to advance matters since then.

One answer is by holding a series of 'Community Stakeholder Forums' on a series of nine themes: 'Where you live', 'Character and heritage', and so on. The format was unpromising. A presentation was given by some eminent personage. About 20 experts in various fields had first dibs in the subsequent discussion from their respective points of view. The locals were privileged to listen, and were then given a limited amount of time to make a few comments at the end. It was not at all clear how these sessions would be absorbed into the preparation of the Local Plan.

Anyone could contribute to the subsequent consultation, which is now closed. The last presentation, on the subject of 'Creating New Places and Communities', seemed to me woeful shading towards dire. A couple of enthusiasts told us about their plans for clusters of villages connected together near to a station. The word 'holistic' was severely done to death and with any luck will not be heard again. Cycling, we were told, is the key - no-one mentioned the obvious problems: hills, weather, the elderly, the young, time compared with the car, the vast cost of constructing a suitable cycle network. The question was not asked as to whether there is any area in Uttlesford suitable for this futuristic clustering vision.

Take-up of both attendance at meetings and consultation responses has been abysmal, predictably enough since the only question which most residents are interested in is, how many new houses are you planning to build in my village, and what will be the impact on me? It could be argued that in Elsenham we don't have too much to worry about - there has been so much new building in the village that there are not many potential sites left.

On that theme, at the April meeting of UDC's Planning Committee, members were due to discuss the application by Gladman to build up to 220 new dwellings off Bedwell Road to the north, on a notably noisy site between the motorway and the railway. UDC's Planning Officer recommended approval; Essex Highways, true to form, withdrew their well-reasoned objections late in the day.

Hawkins & Co
ACCOUNTANTS & BOOKKEEPERS LTD

New location – New name!

Hawkins & Co Accountants & Bookkeepers Ltd, formerly A Wilson Accounting, would like to celebrate our expansion into 33 Cambridge Rd, Stansted, CM24 8BX by offering 10% off services to all new clients that join us in April 2021.

CALL 01279 812277

(10% will be deducted from the total net cost of service provided, valid for 1 year only)

Mat Duxbury

PAINTING

Professional Interior and Exterior Painting Specialist

References available on request

20 Years' experience

Fully Insured

NVQ Qualified and Health and Safety Certified

Local, reliable and friendly service guaranteed

For a free estimate please contact Mat on  07810 250426 or email  mat@duxburypainting.co.uk

ELSENHAM





Is the end in sight?

At the time of writing, the next stage in the relaxing of the lockdown rules is under way, and we can dream of some level of normality returning.

For your Church Fabric Fund that means we can start thinking about what sort of events we can lay on for your enjoyment and entertainment. Unfortunately, the current timing would not allow any significant group events until, probably, July. We will be looking to see what we can offer you during the latter half of the year, including, of course our Christmas Tree Festival!

Just watch *Elsenham News* and keep an eye on the local websites - we will let you know our plans as soon as we can.

Until then, stay safe and get your vaccinations when offered!

NEIGHBOURHOOD WATCH

By Frances Lambert franceslambertnhw@btinternet.com



Spring Garden Crime Prevention continued

We spoke last month about garden security - now we look at the shed, garages and objects within. As mentioned before, controlling access is your first line of defence and you may consider using good old gravel on paths and drives or round statues etc as an audible warning and/or a "Driveway Alert Monitor" (can be found by internet search). Sensitively and effectively placed lighting and CCTV may be considered to help protect outbuildings, ornaments, and statues but these should not be your only thoughts. Don't forget though motion activated lighting may be triggered by animals and shrubs moving in the wind.

Shed and outbuilding security: If you are installing a new shed, try and find a place in view of the house and neighbours. The padlock hasp fittings of a shed should be coach-bolted to the frame and door, strengthen the fitting area with a metal plate inside and out; don't forget the hinges, ensure they cannot be unscrewed. Cheap locks and padlocks are a poor investment; use good quality locks, look for a "Close Shackle" padlock or a key operated mortice lock to at least "Sold Secure" Silver or Gold standard. Protect windows with a wire mesh and fit a curtain or whitewash the windows to prevent prying eyes. NB some of this advice can apply to aviaries, kennels, barns and other buildings of similar nature.

On garage doors consider adding locking bolts to both sides of an "up and over door" or a garage door defender in the ground in front of the door. Don't forget other doors and windows in the garage - secure these as you would in a house.

LOCKS ARE A WASTE OF TIME IF YOU DO NOT LOCK THEM.

Binwash

We clean
your
wheelie
bins!

Commercial & Domestic



Monthly Cleaning
from just **£4.50!**

Professional equipment

Same day as waste collection

www.binwash-uk.com

01799 529899

enquiries@binwash-uk.com

Naomi



Gardening & Design

Creating outdoor spaces for living



Garden Maintenance & advice



Garden design & Consultation



Bespoke planting designs

Call for a free estimate

M: 07778 620576

E: Naomi@NaomiGardenDesign.co.uk

W: www.NaomiGardeningandDesign.co.uk

Trained at Capel Manor College

ANGLIA



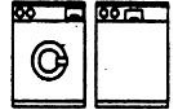
ELECTRICS

Established 1972

Domestic Appliance Repair Service

We offer Specialist Dishwasher,
Refrigeration & Cooker Service, in addition
to our long established and renowned
Washing Machine Service

Our Engineers are
Experienced and
Trained to service
most makes



01279 658767

Friendly Prompt Service

NICK SHUTES

PAINING AND DECORATING LTD

High quality interior and
exterior redecoration

Woodwork repairs and
replacements

Fascias, soffits and cladding

01799 542385
07885 778213

www.nickshutesdecorating.co.uk

ELSENHAM VILLAGE

FETE
SATURDAY 26 JUNE 1-4pm

Fete plans are going full steam ahead and we are still keeping everything crossed that we can all have a glorious day celebrating together at this year's fete.

We totally understand that some people may be a bit nervous as none of us will be used to being in a crowd, but we will obviously follow government guidelines and make the fete as safe as we possibly can and luckily our playing field is BIG! It does mean that any activities we have had previously that involve getting close to others won't be able to go ahead this year, but don't worry there will still be lots to do and see!

If it would make you feel more comfortable, please bring your own chair or picnic blanket for you to use when enjoying the refreshments.

Please note, there is NO parking on the playing field for the public, unless disabled parking is needed. Please park in the surrounding area, but better still, walk. Thank you.

Do you have a special vehicle you would like to bring along to the fete? If so, please just turn up on the day between 9.30am and 12pm – the more the merrier!

If you would like a stall, please either return a fete booking form or email me at the address below – many thanks.

We ALWAYS need help for the fete, particularly in setting up, but DEFINITELY in packing away – the more helpers, the quicker we can do the job. If you want to get involved in any way, please just drop us a line.

Also, if you would like to promote your business to LOTS of local people, then please do get in touch and we may be able to help you there too.

Come on Elsenham, let's make this a fete to remember and a real celebration!!

Please get in touch either calling on ☎ 07962 586825 or emailing on elaine.terry2011@btinternet.com – I look forward to hearing from you.

Very best wishes,



The Fete Team



P.S. Please can you help us with raffle prizes? If you have something you can donate for our raffle, please call Jo on ☎ 07947 559921. Thank you so much.

Luxury Toilet Hire (UK) Ltd



Whether you are arranging a wedding, private party or corporate event, let Luxury Toilet Hire (UK) Ltd provide you with the perfect toilet facility to make your occasion a memorable success.

Cesspit emptying also undertaken.

Tel: 01371 873003 or 01279 504638

Email: info@luxurytoilethire.co.uk

Web: www.luxurytoilethireltd.co.uk



We also hire out mobile fridge and freezer units.



Please contact us for a quote:

Tel: 01371 873003 or 01279 504638

Email: info@chillermatic.com Web: www.chillermatic.com

BMH

WINDOW CLEANING CHERRY PICKER HIRE (12.5M)

Window Cleaning

Gutter Cleaning

Commercial Window Cleaning

Excellent Rates

Professional & Trustworthy

Fully Insured

References on request

07852 722139

"Get rid of the grime with a Tony shine"

- Extensions
- Barn conversions
- New Homes
- Loft conversions
- Planning Drawings
- Building Regulations
- Project Management



Local Architectural Design

Free initial consultation

t: 01799 540600

e: info@alundesign.com

www.alundesign.com

Alun Design Consultancy, Neville House, Station Road,
Wendens Ambo, Saffron Walden, Essex, CB11 4LB

alun

design

consultancy

architectural design

planning

project management

interior design

THE HUNDRED PARISHES SOCIETY

www.hundredparishes.org.uk



Many of us wait anxiously for the outcome of the recent public inquiry into a possible increase in the passenger cap at Stansted Airport, yet the local community's love-hate relationship with Stansted Airport is only the latest in a series of significant aviation events that have occurred within the Hundred Parishes.

In a field at Standon Green End in the parish of Thundridge, a monument marks the spot where Italian balloonist Vincenzo Lunardi landed in 1784 after completing the first manned flight in England. He took off from London beneath a balloon filled with hydrogen.

In 1913, Bentfield Hucks was the first Englishman to loop-the-loop in his Bleriot aeroplane. He was born in 1884 in Bentfield Cottage, Stansted Mountfitchet and thus acquired his unusual forename.



Duxford airfield, now the site of Imperial War Museum, Duxford, first became operational in World War I. Some of its buildings, constructed by German prisoners-of-war, still stand. In 1938, Duxford was the first airfield to take delivery of Spitfire fighter planes. Frank Whittle flew regularly from here while he was developing ideas that eventually led to the invention of the turbojet engine just before the end of WWII.

Altogether, twelve military airfields operated within the Hundred Parishes during WWII. Andrewsfield, straddling the parish boundary between The Salings and Stebbing, was the first American-built base in Europe, becoming operational in 1943. Stansted was another American-built airfield. Thousands of Americans were based in this area; many never saw home again.



Many of us have enjoyed the relative peace that the Covid-19 pandemic has brought to our skies, in particular discovering the joy of walking in the countryside. It is sad that it has taken so many deaths to remind us of the quality of life that exists right here, without the need to fly.

Ken McDonald, Secretary

The Hundred Parishes is 450 square miles of northwest Essex, northeast Hertfordshire and southern Cambridgeshire that is largely unspoilt and is richly endowed with many fine examples of agricultural and built heritage. The area has shared a common history which shaped and preserved its distinctive landscape of small and medium-sized farms linked by winding lanes and ancient rights of way to hamlets, villages and then to small market towns. For more information visit www.hundredparishes.org.uk.

The Beauty Shack Elsenham

07703 784466 / 01279 497236

- * Waxing
- * Facials
- * Massage
- * Nails
- * Tints
- * Spray Tans
- * Lash Extensions
- * Lash Lift
- * Occasion Hair and Makeup



Vouchers Available

hpc (State Registered) **Chiropodist**

CH09088

Home Visiting Practice

Mrs Julie Golden

Est. 1994

01279 873492

A professional service at a
competitive rate

Do-It-4U

Repair, Care & Maintenance

For your Home and Garden

- ◆ **Plumbing, Electrical & Carpentry Services**
- ◆ **Drain Blockages Cleared**
- ◆ **Gutters Cleaned, Repaired or Replaced**
- ◆ **Gardens Tidied & Maintained**
- ◆ **Hedges & Topiary Trimmed & Shaped**
- ◆ **Fences Erected & Repaired**
- ◆ **Sheds & Other Sectional Buildings Erected**

Telephone
01279 814411

Mobile
07774 877320

SCOUTING NEWS MAY 2021

By Matt Morland (Akela) ☎ 07747 272706

✉ mmorland25@gmail.com



Many of you may have noticed the absence of our regular Scouting updates over the past year, but do not fear, we are still here! The restrictions imposed during lockdown forced many organisations to suspend their activities indefinitely, and our members were no longer able to meet face-to-face. However, in traditional Scouting style our dedicated and talented Leadership Team showed true resilience and ingenuity to employ various different methods of delivery to continue providing a quality programme to our young people.

Our Beavers and Cubs have continued to take part in weekly online meetings, enjoying the different style of engagement our programme provided over online school lessons, preventing the dreaded "Zoom Burnout".

For our online meetings we have held bakery nights, a Christingle service with Rev. Gary T, performed shows, learnt about other religions and cultures, practised our navigation and map reading skills, held a pancake night, learnt about WOSM and international Scouting, took part in craft evenings and even had an online First Aid night with Ross the Paramedic, with lots of games to top off our programme.



Throughout this time, we have continued to welcome new Beavers and Cubs to our Group, along with a number of new volunteer leaders. We look forward to offering them the traditional Scouting experiences as soon as we can.

The amount of extra time and effort given by our volunteer leaders to deliver a uniquely different type of Scouting to our Beavers and Cubs has been invaluable in keeping our group running, has kept our young people occupied and entertained, and provided a consistent, positive input to their wellbeing during these difficult times. Our thanks go to our Leadership Team and our members for all they have done.

As we go to print, we look forward to returning to face-to-face meetings for the Summer term as restrictions are slowly lifted, and to the future expansion of our group later in the year, more information on which will be revealed next month!



ST MARY'S CHURCH ELSENHAM
The Vicarage, Carters Lane, Henham ☎ 850281

'Going with the flow' of Covid and Biblical Prophecy

We could use this phrase to describe our approach to the Covid crisis. It hasn't been easy and there has been much suffering along the way, but because we've had to, we've adapted, with the help of amazing advances in technology and medicine. We are so grateful for these, especially the vaccines, which offer us the chance to get back to how we were before.

Will we actually go back to what things were before – or shall we find that much of what we've learnt over the past year will change our future lives significantly? Two things that we might have become more conscious of are the uncertainty of life and the certainty of death.

Referring to the period before his 'coming again in glory to judge both the quick and the dead', Jesus spoke of the uncertainty of life. He mentioned wars, rumours of wars, famines and earthquakes, which he described as "the beginning of birth-pains" (Matt.24.6-8). Of the period shortly before his return, Jesus spoke of "signs in the sun, moon and stars. On the earth, nations will be in anguish and perplexity at the roaring and tossing of the sea. Men will faint with terror" (Luke 21. 25 and 26.) Revelation also points to environmental catastrophe (8.7-11).

Regarding the certainty of death, biblical prophecy tells us something about what comes after death. When we die as Christians, our souls go to be with Christ, as happened with the repentant thief on his cross next to Jesus (Luke 23.43) For others the reality is less enviable – in a word, Hell (Luke 16.22-24). When Jesus returns we shall all experience the resurrection of our

bodies. Paul wrote that Jesus will be "revealed from heaven in blazing fire... he will punish those who do not know God and who do not obey the gospel of our Lord Jesus with everlasting destruction." (2 Thessalonians 1.6-9.)

Why? All have sinned and fallen short of the glory of God...and are freely justified through faith in his blood. (Romans 3.23-25). When Jesus died, he took the punishment that our sins deserved.

"For God so loved the world, that he gave his only son, that whoever believes in him should not perish, but have eternal life" (John 3.16.)

In Revelation, chapter 21 we are told that after Jesus has returned, the world as we know it shall pass away and God will create a new heaven and a new earth where there is no crying and no pain - the uncertainty of life will be no more, and those who belong to Christ will live there with him for ever.

So how can we go with the flow of this? Reader, if you do not belong to Jesus, repent, turn from your sins, and put your faith in him. Then you will receive the gift of the Holy Spirit to help you live a better life. You will become, "God's workmanship, created in Christ Jesus to do good works which God has prepared in advance for you to do" (Ephesians 2.10.)

There is much, much more that needs to be said, but my space has gone. Why not come to one of the churches to ask questions and learn more?

Bob McKean
Churchwarden

Church Services

We have now restarted some in-person services

The service pattern is as follows:

2nd May: Easter 4

10.00am Holy Communion, Elsenham

9th May: Easter 5

10.00am Morning Service, Ugley

11.15am Morning Service, Henham

16th May: Sunday after Ascension

8.45am Morning Prayer, Elsenham

10.00am Morning Service, Ugley

23rd May: Pentecost

8.45am Morning Prayer, Elsenham

11.15am Morning Service, Henham

30th May: Trinity Sunday

10.00am Holy Communion, Ugley

This is subject to regular review in line with the government roadmap out of lockdown.

We are also still meeting 'virtually' HEU Combined Churches Service

Available via the website each week:

www.heuchurch.co.uk

Or search 'Henham, Elsenham and Ugley' on YouTube

'Zoom Service' at 9.30am

We use the *same link* each week.

Contact Charles Willbe

(c@willbe.me.uk) for the link

For information on all these events, please contact the administrator at office@heuchurch.co.uk

Other regular events

St Peter's Ugley Junior Church

Parents are sent out material for each week's session, to be done at home. Term time only.

Elsenham Sunday Club/Explorers

(Y1-Y6) We continue to run the magazine programme each week. This includes a story, teaching sheet, family prayers, quizzes and crafts. Contact the administrator to receive the magazine.

Henham Sunday Club (age 5-Y3)

We continue to send an audio file, a picture story and activities to parents by email.

Henham Explorers (Y4-Y6)

Not currently running. Contact the administrator to be sent weekly material.

Christian Play (Y1-Y2)

We continue to run the magazine programme each week. This includes a story, teaching sheet, family prayers, quizzes and crafts. Contact the administrator to receive the magazine.

Henham Little Fishes pre-school group Thursdays, 10.15am

Meeting via Zoom until restrictions change to enable us to meet physically.

Elsenham Little Fishes pre-school group Now meeting 'in person' once again!

Fridays, 10.00am at Elsenham Memorial Hall during term-time. For parents and care givers and pre-school children. Join us for singing, Bible stories, craft and games.

Pathfinders (Y7-9) – Sundays, 6pm

Meeting via Zoom. We'd love to have new members join us!

Crammin' (Y10-Y13) Sun evenings,

7pm Zoom sessions for an hour including chat; games; and a short bible discussion - until such time as we have a solution for meeting physically again.

CHRISTIANITY|EXPLORED
WHAT'S THE BEST NEWS
YOU'VE EVER HEARD?



Covid, masks, tiers, restrictions, the economy, missing hugs.... Fed up hearing bad news?

Are you longing for some good news?

What about hearing the best news ever?

Christianity is all about Christ and Christ IS the best news ever. Join us on Zoom as we follow an eyewitness account of the life of Jesus and see for yourself how he really is the best news!

Courses can start anytime at times to suit you. If you would like a place on a course, contact office@heuchurch.co.uk with the days and times (am, pm or eve) that are best for you.



**Energetically clean your property,
restoring peace, joy and comfort.**

Are you buying or selling a property?

Moving into a new rental property?

Having issues selling or renting out your property?

House feel chaotic for no reason?

Unable to keep house organised no matter how hard you try?

Is there a corner in the house that you and your family avoid?

Feel uncomfortable in your own home?

Do you feel stuck in life but can't explain why?

Feel drained all the time?

Hear, see or feel things in your home?

Heightened emotions for no reason?

Something just feel off in your home?

Negative energies in our home can impact your emotional and physical health, your relationships and even your children and pets.

**GET IN TOUCH NOW TO RESTORE PEACE,
JOY AND COMFORT BACK TO YOUR HOME.**

www.greenlightrealignment.com

info@greenlightrealignment.com



APRIL AT U3A STANSTED

Contact Ray ☎ 813279 ✉ stanstedu3a@gmail.com



Registered Charity No: 1148073

Many groups have been able to continue during lockdown, mainly using the Zoom app. Keep an eye out for details of some planned Zoom coffee mornings!

Tony Wellings has kept us alert with his emails giving details of some lovely local walks and photos of the wild flowers and wildlife that we should look out for on the way.

Some recommended books to read with a pastoral theme are: 'English Pastoral' by James Rebanks, 'A Year Living Simply' by Kate Humble and 'Arthur's Garden' by Pam Rhodes. The Book Group has continued with their passion for reading but we are all looking forward to regaining some sort of normality with a general meeting on 24 June, taking advantage of the Government's proposed end to lockdown. This will be a social meeting with tea and cakes and an opportunity for us all to have a catch up chat and generally get used to meeting together again.

We are also proposing to have an Open Day on Thursday 1 July and we hope you will come along and see what we are about. Hopefully you will find something to interest you and if you haven't already joined, we would love you to join and find a group that suits you. More details in June and there will be posts on the information boards around the village.

This year our membership is just £12 for the year and our membership secretary Lynda Webb will be happy to take your details. Our first speaker at the meeting on 15 July will be Alan Haines who will talk on 'The Baby Boomer Nostalgia Show.'

STANSTED AIRPORT WATCH

☎ 870558 ✉ info@stopstanstedexpansion.com



Stop Stansted Expansion has announced its intention to bring an end to almost 19 years of campaigning under the SSE banner, to be replaced by Stansted Airport Watch (SAW). The proposed rebranding of SSE forms part of a number of changes to be recommended for approval at the annual general meeting (AGM) of SSE's parent organisation next month.

A reason for the new organisation is to help bring about a changing of the guard within SSE. Most of the current members of the SSE committee have been in place since the campaign group was founded.

Peter Sanders will be standing down as Chairman of SSE at this year's AGM, having been a founder member of SSE in 2002 and its Chairman since 2004. Peter Sanders commented: "I have no doubt that Stansted Airport Watch - SAW - will be every bit as effective as SSE."



The Executives Choice Chauffeur Company providing clients with premium transport at affordable prices. Airports, sporting events, theatre trips etc.

Corporate accounts welcomed.
7 Seater available

To discuss your requirements

Contact Graham Anderson: graham@execschoice.com

Phone 07481 494988

www.execschoice.com

Your local, independent sales & letting agent

- Sell or let your home with no fuss & the best price possible
- Accompanied viewings weekends & evenings
- Fixed fees or percentage (No VAT to pay)

Call 01279 813318 to book a free, no obligation valuation.



rightmove  Zoopla  PrimeLocation  OnTheMarket.com 

1 Station Road, Stansted, CM24 8BE
Email: peter.james@murdochsestateagents.co.uk
www.murdochsestateagents.co.uk

ELSENHAM VILLAGE HISTORY SOCIETY

By Mike Rea, Secretary ☎ 813634 ✉ evhs12@hotmail.co.uk

🌐 www.elsenham-history.co.uk



As I sit contemplating a blank computer screen pondering this month's offering I am reminded that non-essential shops are about to re-open after their period of enforced closure and this got me thinking about the shops of Elsenham, past and present. We are all familiar with Ambrose Corner that opened in a blaze of local publicity in 1978. Of the original shops that opened that day the only one that remains in its original form is Options Salon.

The Spar, Elsenham's first mini supermarket opened on day one with the Post Office inside, the Post Office later moving to its own present day premises. The Spar shop became a "One Stop" and more recently a Tesco Local. Next door was Shakespeare's Butchers that lasted until closure in the early 1980s. The premises were taken over by the Windleys in 1985 and re-opened as a butcher's. This too closed and in 1993 was reborn as Windley's Fish and Chip shop. Today it is still a fish and chip shop after an intervening period as an Indian takeaway. The greengrocer that also opened in 1978 lasted until January 1993, its small patronage making it unviable.

So from the newest shops to the oldest, "The Stores". Situated next to the Crown Inn, the earliest shopkeeper recorded was Miss Ritty (sic) Robinson who, likely leased it from Watney Combe Reid Co Ltd in 1866. She retired from the shop around 1903, died in 1914 and was buried in Henham Churchyard.

The next shopkeeper was Edwin Barrett who too leased the shop before buying the freehold in 1914. When the blacksmith's shop next door closed its doors in 1922, the shop was extended and Mr Barrett and wife Mary continued to run the shop until the mid 1930s. School children liked to be served by Mr Barrett as he was generous in his weighing of sweets, his wife Mary not so much!

The Barretts were succeeded by "Bert" and Mary Caton and her sister Edie who ran a haberdasher's within the shop. Jim Buttle, their assistant, was later to take over the business in 1954 and remained there until his retirement in 1982. Retired from the Navy, Jim Buttle's brother-in-law, Jim Barker and his wife Maureen ran the business until 1997 when "The Stores" closed. The last few years Jim ran the business alone after the sad loss of Maureen in 1994. Jim too has now passed away but will be remembered by many for his shout of "Dooooor" from his stool at the bar of The Crown to anyone who had the temerity to leave the door open on their entry, or exit. There is a fine photograph of Jim displayed by his seat in the pub standing in full uniform by his last command, HMS Victory.

Finally, referring back to last month's article, my note of thanks to Dave Verlander, Gordon Barker and Heather Salvidge for their help compiling the information. We have decided that the June meeting will not take place and are making tentative plans to welcome members and friends back to our meeting in September. Watch this space!



T.J. Patmore
Building Services

- Extensions – Loft Conversions
- Roof work – Carpentry – Roof Tiling
- First and second fix carpentry
- Kitchen fitting
- Built in wardrobes
- Decorating interior and exterior
- Floor and wall tiling
- Fencing – Decking – Patios
- Supply and fix u.p.v.c. windows
- House maintenance

*Call Trevor for friendly help, advice
and FREE estimates*

tel 01279 816097
mob 07932 666224



E. N.C. Electrical Limited

Industrial Agricultural Domestic

Electrical Installations

Fire Alarms/Emergency Lighting

Fault Finding

Portable Appliance Testing

Fixed Wiring Test & Inspection

Over 25 Years Experience in the
Electrical Industry

Contact: Ian Arran

Tel. 01279 647042
Mobile 07776 252994



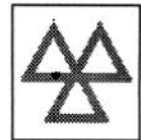
Email: eneelectri-
calltd@btinternet.com

44 Alsa Gardens Elsenham

Bishop's Stortford Herts, CM22 6HB

GARRETT'S GARAGE SERVICES

42 Golds Business Park, Elsenham
Bishop's Stortford, Herts CM22 6JX



- Mechanical Repairs
- Servicing
- Tyres
- Engine Tuning
- Computer Diagnosis
- Windscreen Repairs
- M.O.T.'s - Catalyst & Diesel Tested
- E.H.D.C. - Authorised Hackney Carriage Testers
- Batteries
- Exhausts

*MODERN WELL
MAINTAINED
WORKSHOP*

ALL MAKES OF VEHICLE

**FREE COLLECTION AND*
*DELIVERY SERVICE**

TEL: 01279 647777 FAX 01279 817622

Looking for a new job or thinking about a change of career?

On furlough and wanting to develop your skills and personal development?



Uttlesford District Council

The DevelopMe career development hub is packed with interactive tools, e-learning content and the latest job opportunities, all designed to help you navigate today's job market and grow in confidence

- Create a personalised development planner
- Help with career options - use the career assessment to get a better understanding of your strengths, motivations and aspirations
- Advice from expert career coaches and hiring managers
- 1000s of e-learning courses focusing on developing your career and workplace skills
- How to make your CV or job application stand out from the crowd
- Interactive interview technique program
- Job search engine to help find your perfect opportunity
- Specialised section for 16 to 24 year olds

Your career isn't just a future thing it's about discovering who you are now as well as who you might become.

Sign up today to start exploring what's on offer.

<https://www.uttlesford.gov.uk/develop-me>

Aged 16-24 and not sure what to do next?

An apprenticeship is an exciting option - you get hands on training and also the chance to put your skills into practice.

Apprenticeships are available for school leavers, people upskilling in their careers and complete career changes. There are hundreds to choose from and some include a qualification.

Apprenticeships are funded from contributions made by the Government and your employer which means you will not have any student loans or tuition fees.

Essex Opportunities is here to help you navigate your way through the different types of apprenticeship available and find the right opportunity for you. There's also lots of information about skills and training to help you kickstart your career.

www.essexopportunities.co.uk

Most people will need digital skills to gain or remain in employment as all sectors embrace and accelerate digital ways of working. Whether you are a resident or a business looking to upskill your workforce our website and free business newsletters contain up to date information on digital skills, training and mentoring opportunities.

www.uttlesford.gov.uk/business

Connect with Uttlesford District Council on Facebook and follow us on Twitter @UttlesfordDC and @UDCBusiness

Sign up for Business News emails at www.uttlesford.gov.uk/keepmeposted

YOUNG'S

WINDOW CLEANING SERVICE

We specialise in residential properties offering a quality and regular service for exterior and interior cleans
Serving the Elsenham community for the last 10 years

Call or text Malcolm for a FREE quote
07817 481901

01279 656 983 - 0800 587 2556

Unit 1, Suite 1, Peek Business Centre, Woodside Road, Bishops Stortford, CM23 5RG



- Aerial Installations
- CCTV & Security Alarms
- Audio Visual Installations
- Wireless & Wired Networks
- TV Wall Mounting Services
- Sky Installations & Subscriptions
- Freesat Installations & Receivers
- Multiroom Music & TV Distribution
- Family Run Business



www.mediacomS.co.uk

info@mediacomS.co.uk

St Clare Hospice's Open Gardens returns this summer

This summer, St Clare Hospice's perennially popular Open Gardens event is back for its 27th year and will be taking place safely in person, after last year's event had to take place virtually.



This year the horticultural event, sponsored by Land Sheriffs, will take place on weekends throughout June and July, giving green-fingered fans of the event more than a dozen gardens to explore including some of the best-kept green spaces in West Essex and East Hertfordshire – from the villages of Thornwood and Hastingwood, to the gardens of Harlow, Epping and Loughton. Entry to participating gardens is payable on the gate and entry starts from £3 per garden, or group of gardens. Tea, cakes and lunches are available in many of the gardens. For details call Dan Bailey on ☎ 773738 or ✉ dan.bailey@stclarehospice.org.uk

Look after the ones you love, and St Clare during Wills Month

This June, St Clare is holding its annual Wills Month – reminding people that writing your Will is one of the most important things you can do to ensure that your family is cared for and that it is never too soon to start thinking about it.

From 1 - 30 June 2021 you are able to make or amend your Will for a suggested donation to St Clare Hospice.

You will be able to make one of the most important documents in your life – whilst also raising vital funds for your local Hospice. The suggested minimum donations are: £150 for a Single Will; £200 for a Double Will; £85 for an amended Will.

The participating solicitors are:

- Bishop's Stortford: Pellys, 18 The Causeway, CM23 2EJ ☎ 01279 758080
- Dunmow: Foort Tayler, 42 High Street, CM6 1AH ☎ 01371 875200
- Wade & Davies, 28 High Street, CM6 1AH ☎ 01371 872816
- Saffron Walden: Pellys, 12 Market Walk, CB10 1JZ ☎ 01799 514420

To book an appointment, please get in touch with any of the participating solicitors and mention 'St Clare's Wills Month' when you make your appointment.

St Clare Hospice is a charity providing specialist palliative care for people living with terminal or life-limiting illnesses across West Essex and East Herts border. We care for patients and their families, providing physical, emotional, social, psychological and spiritual support, and ensuring they have timely access to skilled, compassionate and sensitive care in a place of their choice. Our services are free of charge to those who need our care, but cost over £4.6 million a year to run. With limited NHS funding we need to fundraise the majority of this each year through donations and other voluntary sources.

Options Hair Design and Hair Loss Clinic

An essential choice with a passion for hair

We welcome you with a complete in-depth consultation, whether this is for a change of style or colour or for more clinical advice on the health of your hair and scalp.

For clients visiting The Hair Loss Clinic we are able to offer a completely private consultation and treatment room away from the main salon. We offer proven treatments for hair loss and also provide a complete wig fitting and finishing service. We work closely with a leading UK Trichologist who holds regular clinics with our clients.

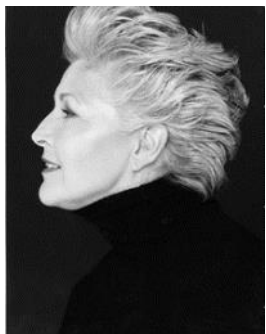
Our products are organic and formulated to enhance your hair health. Our dedicated stylists will work with you to achieve the look and feel that you want. Our salon has parking right outside and a warm welcome awaits you.

Elsenham Salon 01279 812665

Bookings not always necessary

www.optionssalon.co.uk

Hair Loss Clients please call Ann on 07957 166436



ELSENHAM C. OF E. PRIMARY SCHOOL

By Linda Reid, Headteacher



The start of the summer term has coincided with the easing of restrictions associated with COVID19 which has enabled us to gradually return to a more usual way of working. The children's excitement at returning to activities such as eating lunch together as a larger group in the school hall and sharing time outside at break times with other classes has been a joy to see. We have also been able to return to larger group assemblies and collective worship which has enabled us to share in the children's successes and celebrate their achievements with staff and other pupils. The wonderful sounds of children singing again is truly magical. It seems hard to believe that it is more than a year since these last took place!

The easing of restrictions also means that we are now able to open our doors and enjoy welcoming the children who will be joining one of our two reception years in September. A series of visits has been planned to ensure that they are as comfortable as possible with their new surroundings, and with the staff, before they start school formally. A meeting with new parents has also been arranged. However this will need to take place via Zoom due to the restrictions on group size, which remain in place. We hope to have a second, onsite meeting for parents in July.

This has been a busy time for us in terms of recruitment. I am delighted to let you know that the Governing Body has successfully appointed a new Headteacher, who will take up post in September. Ms Todd began her teaching career at Elsenham and has since gone on to enjoy some wide and varied experiences. She is an experienced Headteacher and is currently the Headteacher of Radwinter C. of E. Primary School. She is very much looking forward to returning to the school where her career began.

We have also been successful in recruiting a new teacher, Miss Verlander, to join the staff team. It seems very fitting that Eleanor too is returning to our school after a long absence. Eleanor first joined our school as a new pupil as I took up the headship. Throughout her time in school, she talked of her ambition to be a primary school teacher and it seems very fitting that she will fulfil her ambition at Elsenham in September.

We are in the process of finalising the staff team for our before and after school clubs and are pleased to welcome Mrs Janna Jenkins who takes up her post later this month. She has two boys in school and is keen to immerse herself in village life.

Next on the agenda is the recruitment of a caretaker. The post will be advertised shortly so if you know of anyone who may be interested, please encourage them to contact the school office.

It promises to be a busy term ahead.



**Golf
World
Stansted**

FOOTGOLF | 9 HOLE GOLF | TOPTRACER
DRIVING RANGE PLUS FOOD AVAILABLE
INDOORS, OUTDOORS OR TAKEAWAY!

1066 ADVENTURE GOLF

Everyone Welcome!

Golf World Stansted, Hall Road, Nr Stansted Airport, Essex
CM22 6FL | 01279 812 865 | leanne@golfworldstansted.co.uk
www.golfworldstansted.co.uk



REFILL DELIVERY SERVICE

BATHROOM • KITCHEN • LAUNDRY

HOUSEHOLD PRODUCTS REFILLED AT YOUR DOOR

100ML SAMPLE
BOTTLES AVAILABLE



WE CAN REFILL YOUR OLD BOTTLES!

EMAIL: HELLO@GREENPEARECO.COM

ORDER ONLINE: WWW.GREENPEARECO.COM



—STEPHENS—
CHIMNEY
SWEEP



*Insurance Certificate supplied - Fully
Insured - Free Smoke Test*

Open Fires - Multi Fuel Stoves -
Aga - Rayburn - Gas - Oil

CCTV Surveys - Bird Nest Removal
Local Business

Tel: 0800 112 3600

Mob: 07918 708626

www.stephenschimneysweep.co.uk

NATURAL OUTLOOK ON A MAY DAY

By Heather Salvidge ☎ 814153



There's a wide variation of weather patterns in May, true the days are longer but temperatures vary from night-time frosts to afternoon peaks of 28°C – 30°C. There are calm, sunny days, gales, storms, torrential downpours and mini droughts. There is also a lot going on with flowers, trees, insects and birds.

On 'a lovely May morning' if you open a window very early you should tune in to the dawn chorus when male birds sing loudly to establish territories and/or attract mates. Depending on where you live you could hear, for example, wood pigeons, collared doves, a crow, blackbirds, thrushes, dunnocks, robins, skylarks or chaffinches – or the M11.

The chorus dies down and birds start on business; nest building is still under way; twigs, moss, feathers, grasses and mud all need to be collected and used. I have watched starlings twisting off fronds of ornamental grasses, a sparrow ripping off a piece of lychnis leaf – interior decoration? - and a rook breaking off twigs.

Some nests have been made earlier and parent birds are either sitting on eggs or feeding nestlings, probing the grass for worms and insects or picking off aphids from plants. When nestlings leave the nests you see adult birds, for example, sparrows, starlings or blackbirds, being followed around on the ground by juveniles begging to be fed by an exasperated parent or being shown by one how to drink from a dish of water.

House martins and swallow chicks are fed in their nests until they fledge and with a little help from the adults are soon on the wing catching their own food. The parents have to feed themselves of course and if you can put out the right food, so much the better.



Locally on ponds and lakes, waterbirds have their families too: in the Aubrey Buxton reserve, mallards and moorhens raise broods, mainly on the top and bottom ponds so please keep dogs well away from these birds.

Hatfield Forest, bright yellow with buttercups in May, also has mallard and moorhen broods plus coots, great crested grebes sometimes, gulls, mostly black headed ones, and possibly either grey lag or Canada goose goslings. If you drive beyond the main entrance to the Forest and past two sharp bends after Little Barrington Hall Farm, there is a special roadside verge which towards the end of May is coming into its best. Just some of the special plants growing there are bee orchids, sulphur clover, grass vetchling, yellow wort, fairy flax, adder's tongue ferns and ox-eye daisies. These grow in full sun but in shaded sites such as Aubrey Buxton and Shadwell Wood near Ashdon, another EWT reserve, are the last of the bluebells, ramsons, the wild garlic and herbs, sanicle, pignut and sweet woodruff. All these have small or tiny white or green flowers and interesting leaves but are very different to look at.

Spellbrook Garden Design

DRIVEWAY & GARDEN DESIGN

- ✓ Decorative Walling and Fencing
- ✓ Patios & Paths
- ✓ Block paving, Tarmac and Graveling
- ✓ Decking
- ✓ Turfing, Garden design and build
- ✓ Stone cleaning

spellbrookgardendesign.simdif.com

Tel: 07799 603089 / 01279 503936 / 0800 696 5257

Westwoods, London Rd, Spellbrook CM23 4AH



[Checkatrade.com](https://www.checkatrade.com)

[MyBuilder.com](https://www.mybuilder.com)

GLYNN'S CHIMNEY SWEEPS

Est. 1995



VACUUM AND BRUSH

**NACS MEMBERS
HETAS APPROVED**

COMPETITIVELY PRICED

01279 424983

www.glynnschimneysweeps.com

Essex Autospray

Your local Collision Repair Centre - Est 1982

- Free Courtesy Cars
- Free Estimates
- Low Bake Ovens
- Blackhawk Alignment



Tel: 01279 816296 E: info@essexautospray.co.uk

www.essexautospray.com

M11 Business Link, Parsonage Lane,



RAY'S REFLECTIONS WILL RETURN IN ITS OLD FORMAT SOON, IN THE MEANTIME...

An update on the Bowls and Social Club by Therese Clear

The club started out as a concept in 1994 and we were playing on our new green from 1999. I joined in 1999 as a complete novice and was welcomed by a lot of friendly people who taught me how to bowl. Today, having gained my county badge along the way, I am happy to take part in any home or away, local or county competition.

Now, I would love to encourage any of you, who may be interested in learning the art of outdoor bowls, to come to the club as a visitor. You don't have to join immediately; we can supply you with shoes and bowls initially. We have some wonderful coaches who can teach you the basics and should you wish, take you from novice to as high as you want to fly. We have members who just want a social roll-up, some who just want to take part in the friendly games and internal competitions, and we have members who delight in County level competition.

If bowls is not your thing then we also offer regular darts, crib, pool, bingo and quiz nights. Occasionally we have social events with live music and dance nights.

Our modern clubhouse has a well-equipped bar and kitchen and we put these to good use.

It has been a sad year with the Covid closures and restrictions, but we have plans now with the recent announcements to go full steam ahead with our new seasonal plans as and when we are able. In the meantime, please be assured that we take our members' and visitors' safety very seriously and will be Covid secure as long as we need to. Come and join in – it's great fun!

GARDEN HINT *By Sue Johnson*

Wait until all risk of frost has passed before planting or moving tender plants outdoors. Harden off by covering with horticultural fleece at night for a week to acclimatise them to outdoor conditions.





Pike's Plumbing & Heating

Whether you're looking for a plumber or heating engineer, Pike's Plumbing & Heating can help.

If it's an emergency, simple problem or you're just thinking about a new boiler or bathroom give me a call – I'm available when you need me 24/7. Now's a good time to think about servicing your boiler too and make sure you're not left out in the cold! **No Call-Out Charges & Free Quotations**

Tel: 07889 140035

Craig Pike

Email: info@pikesph.co.uk



Web: www.pikesph.co.uk

DANIEL ROBINSON & SONS

Independent Family Funeral Directors & Monumental Masons

Est 1892

Always here when you need us...

- Arrangements in the comfort of your own home, if preferred
- Private Chapel of Rest
- Pre-paid funeral planning services
- Traditional & contemporary funerals to suit your wishes



**79/81 South Street
BISHOP'S STORTFORD
01279 655477**

www.drobinson.co.uk

THE MERMAID OF BLACK CONCH by Monique Roffey

Reviewed by Marion Giles



'March 1976: St Constance, a tiny Caribbean village on the island of Black Conch, at the start of the rainy season. A fisherman sings to himself in his pirogue, waiting for a catch but attracts a sea-dweller he doesn't expect. Aycayia, a beautiful young woman cursed by jealous wives to live as a mermaid, has been swimming the Caribbean Sea for centuries. And she is entranced by this man David and his song. ...' So says the blurb on the back of the book.

Reviews:

'Monique Roffey is a unique talent and most daring and versatile of writers'
- **Bernardine Evaristo**

'What makes the novel sing is how Roffey fleshes out mythical goings-on with pin-sharp detail from the real world' --**The Observer**

'The Mermaid of Black Conch is a beautiful book and a joy to read' --**Nikita Gill**

This was the choice for the book group this month. The book was the winner of the Costa Book Award 2020. This book was well liked by the group and absolutely loved by some. This is quite a sad book and quite dark at times.

This is an unusual take on the mermaid myth. This mermaid is not your usual sweet, hair brushing, scallop wearing beauty. She is massive, dynamic and barnacle encrusted. She is also a thousand years old.

Aycayia (sweet voice) was cursed by goddesses to live as a mermaid by a request from the jealous wives of her village who perceived her as a threat because their menfolk were so entranced by her. Doomed and lonely, she swims in the sea around Black Conch. David has come to know her and their trust develops slowly as she comes to hear his singing. She is captured by an American and his son on a fishing trip. They string her up in the harbour and intend to take her and sell her. David rescues her with the intent to put her back in the sea, but she starts to change back into a woman. However, she is once again targeted by those who perceive her as a threat.

The book is full of interesting characters, Miss Rains and her son Reggie are friends to David and Aycayia and Life, David's uncle. The book is full of magical realism, the writing is lyrical and the language quite poetic with much Caribbean expression. Monique Roffey paints a vivid picture of the Caribbean and the love between David and Aycayia is sensitive and lovely. There is also a view of modern life, attitudes to women and the sad cruelty of those who perceive themselves to be threatened by others.

That said, It is still an easy and enjoyable read.

Published by: Peepal Tree Press

ISBN: 978-1845234577

May 2021



SDS Installations Ltd

AERIAL AND SATELLITE SERVICES
FOREIGN SATELLITE SYSTEMS - CCTV - EXTRA TV POINTS - SKY LINK UPS
PHONE POINTS - HOME SIGNAL DISTRIBUTION - WALL MOUNTED PLASMA/
LCD SCREENS - CABLES SUPPLIED AND HIDDEN

Alan Smith
50 Sunnyside
Stansted
Essex CM24 8AX

01279 279012
07771 881042
sdsinstallations@hotmail.com
sdsinstallations.com

6 Windmill Close
Great Dunmow
Essex CM6 3AX

Andrew Allen Heating Services

07973 688286

lunarpond@hotmail.co.uk

- 'Gas Safe' registered
- Boiler and appliance servicing and breakdowns
- Plumbing and heating installation and maintenance
- Natural gas
- Landlord certificates

CLEAR OVENS

Oven Cleaning Specialists

01279 89 89 96

we accept cards!
VISA
MasterCard

Make your oven look showroom fresh with a professional clean from **Clear Ovens**. Our fully insured expert technicians will make it shine like new.



The Association of Approved Oven Cleaners



MEMBER OF THE FEDERATION OF SMALL BUSINESSES

Covering Sawbridgeworth, Harlow, Epping, Great Dunmow, Braintree, Stansted, Bishop's Stortford and surrounding areas.

01279 89 89 96 or visit us online at
www.clearovens.co.uk

The difference is clear

STANSTED HALL & ELSENHAM CRICKET CLUB

By David Brown ☎ 831011 ✉ david1.r.brown@gmail.com



The cricket season will begin on time – great news for all of our members. Outdoor nets began in early April for our senior players and our junior coaching evenings began on 16 April. Our 'All Stars' programme for 5 to 8 year olds will begin on 7 May. The England & Wales Cricket Board gave the go ahead to open our clubs from 29 March. Restrictions still apply and will be adhered to.

The clubs are in good shape going into the new season. Financially we are stable and it appears that all of last season's players will return plus a few. Both grounds (Stansted House and Molehill Green) are looking very nice and both pavilions have been improved. Jason Brown (All Stars), Paul Walton (U10), Ollie Patmore (U13), and Andrew Mackinlay (U15) will continue to take the Friday evening coaching sessions at our main ground.

The club would like to thank, Russell Property and Nockolds, our main sponsors, all advertisers, and ball sponsors for their continued support. Providing we get some warmth and sunshine this could be a lovely summer of sport. After what has been a very difficult winter we very much hope that people will want to get outside and take the air - where better than either of our grounds. A warm welcome awaits you. If you are interested in joining the club in any capacity please contact me – as above.

Have a great summer everybody – stay safe.

ELSENHAM TENNIS CLUB

By Petra Studholme ☎ 01279 814667



The best way to keep up to date is via our website www.elsenhamtennisclub.co.uk or our Facebook page.

Weekly schedule: once we are allowed to run these again please note that we operate these events strictly adhering to government and LTA guidelines in place at the time, limiting numbers via a pre-booking system. Strict measures are in place putting everyone's safety first.

Tuesday evening – club night

Wednesday morning – ladies' morning

Thursday evening – two group coaching sessions

Friday morning – ladies' morning

Sunday afternoon – leisure play

Coaching: our passionate and dedicated coach Steve has individual and group lessons to suit all needs, ages and abilities. See website for more details on how to get in touch with him.



Double Glazed Units – SAME DAY

- Table Tops
- Shelves
- Emergency Glazing
- Replacement Misted Double Glazing
- Greenhouse Glass
- Cat and Dog Flaps Fitted
- Splash Backs – Any Colour
- Glass Cut To Size
- Emergency Boarding
- Safety Glass
- Mirrors

LOCAL COMPANY – GREAT PRICES – RELIABLE PROMPT SERVICE

Elsenham – Great Dunmow – Bishops Stortford - Stansted



Simplylawns
Lawn Treatment Service

Fed up with moss and weeds?
I offer:

- Regular lawn feeds
- Weed treatment
- Moss treatment
- Aeration
- Scarification

CALL ANDREW NOW FOR A FREE LAWN SURVEY on 07791 128399 or visit my website www.simplylawns.co.uk

Local Business. Friendly, professional service

JOHN COLEBY

Experienced Interior and Exterior Decorator

For a friendly, reliable service please telephone
01279 815510 or 0793 9070818
for a free estimate

ELSENHAM BOWLS AND SOCIAL CLUB

By Sue Waite ✉ suewaite2003@yahoo.co.uk



Hello bowlers and social members. Hopefully when you read this we will have successfully opened the club on April 23 and members will have enjoyed their first game of the season with our Friday night roll up. Unfortunately, according to the guidance from Bowls England, we were only allowed to have 24 bowlers on the green and no spectators, so I'm sorry if you missed out on this but it will improve soon as long as the roadmap out of lockdown continues as planned.

Bowls England is planning a recruitment event for clubs from May 28 to 31. Trevor Hackett has scheduled our Open Day at the Bowls Club for May 30 to coincide with this.

No bowling as such is planned but a series of fun events are being organised on the rinks to encourage people to come along and have a go. If you are then interested in taking this further have a chat. A tour of the club will be given to you along with information about the club and how it runs and the games you could become involved in playing. Coaching can also be given with as many as four sessions able to be booked. If you are interested, then please come along from 10am on May 30 and have a go – you never know, you might be the next champion in waiting. Take care everyone and see you all soon.

HENHAM 3K & 10K FUN RUN

📍 www.henham10k.org.uk



Only six weeks to go until the start of this unique event. If you haven't entered yet, now is the right time. Every entry helps to support Henham village school. Only £5 per entrant. The course will be open for two weeks. Pick your day, pick your time, choose your companions, or run alone. The course can be completed as often as you like during the two weeks. Every competitor receives a medal.

If you would like to be considered for a prize as well as a medal and you do not currently record your runs or walks, we suggest that you download a free app to your phone such as 'Strava', or 'Map my run'.

Spread the word - invite friends and family, colleagues and neighbours, old and young, help your child and your gran get their first medal or add to their ever-increasing successes.

More detailed information and to enter, please visit 📍 www.henham10k.org.uk.

Paddy McKeown



WALDEN
Sweeps

- ◆ Services offered include:
- ◆ Chimney and Flue Sweeping
- ◆ Wood Burning Stoves
- ◆ Open Fires
- ◆ Aga/Rayburn
- ◆ Bird Nest Removal
- ◆ CCTV Examinations

t: 01799 599981
m: 07956 099788
e: paddy@waldensweeps.myzen.co.uk

WWW.WALDENCHIMNEYSWEEPS.CO.UK

CHIROPODIST & PODIATRIST

Bishop's Stortford

- Orthotics
- Diabetic Foot Care
- Saturday Clinics
- Routine Treatment

R. Handford & Colleagues
H.C. P.C Registered

Bishop's Stortford - 16 Hockerill
Street

01279 652249

www.feet.org.uk

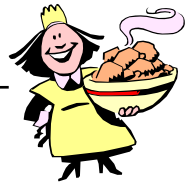
FROM THE PARISH REGISTERS

Funerals:

- Service of Thanksgiving on 23 March 2021 at St Mary's Church, Elsenham, followed by a burial at Elsenham Cemetery, John William Walker, aged 95 years, of Grange Care Home, Saffron Walden.
- Service of Thanksgiving on 26 March 2021 at St Mary's Church, Elsenham, followed by a burial in the churchyard, Darren Michael Barker, aged 51 years, of Pimblett Row, Henham.
- Service of Thanksgiving on 30 March 2021 at St Mary's Church, Elsenham, followed by cremation at Cam Valley Crematorium, Jacqueline Bailey, aged 69 years, of Station Road, Elsenham.
- Service of Thanksgiving on 20 April 2021 at St Mary's Church, Elsenham, followed by a burial in the churchyard, Rosemary Frances Kirkpatrick Long-Price, aged 91 years, of Edensor Care Home, Clacton-on-Sea.

COOKERY CORNER

By Sue Johnson ☎ 812704



Aubergines combined with tomatoes, make a lovely meat-free main course. Delicious also served alongside a roast. Slicing fairly thickly and cooking like this gives the aubergines a deliciously meaty texture.

ROASTED AUBERGINE PARMIGIANA (serves 4)

- 2 medium aubergines, cut into ½ inch (1 cm) thick slices
- Extra virgin olive oil, for frying
- 1 garlic clove, finely chopped
- 1lb 2oz (500g) tomato passata
- 1 bunch basil, leaves roughly torn
- 4oz (100g) Parmesan, grated

Lay the aubergine slices on a chopping board. Sprinkle some salt over each slice and place another chopping board on top. Place a heavy weight on top and leave to press for two hours.

Meanwhile, pour 1 tablespoon olive oil into a medium saucepan and fry the garlic until it begins to colour. Add the passata and simmer gently for about 45 minutes or until thickened, stirring occasionally. Season and leave to cool.

After the aubergine slices have been pressed, briefly rinse them in a colander, then thoroughly pat dry with kitchen paper. Heat 2-3 tablespoons olive oil in a frying pan and when very hot, add the slices and fry for 2-3 minutes on each side until lightly browned, adding more spoonfuls of oil as necessary during cooking and when turning the aubergines over. Drain on kitchen paper.

Heat the oven to 200°C/180°C fan/gas mark 6. Arrange the aubergine slices in a small ovenproof dish and spoon the tomato sauce over each slice. Scatter the basil leaves, then the Parmesan over the top and bake for 20 minutes. Serve hot.

CHEF'S RECOMMENDATIONS: Making this recipe does take a bit of time but is otherwise easy and well worth the effort. Vegetarian cheese can be used, if preferred. A tin of chopped tomatoes is fine instead of passata. Keep any left-over parmesan in the freezer, then use grated from frozen.

Editorial Information

Articles

The **last day** for editors to receive articles, advertising and letters, which must contain the author's name and address (which may be withheld), is **the 12th of each month**.

Articles should ideally consist of a half page of A5 or a full page of A5. Articles over these sizes or letters containing more than 500 words may be edited depending on space.

Copy submitted after the 12th may not be accepted but will, if deemed appropriate, be held over to the next month. We are happy to receive handwritten articles that ideally should reach us earlier than the 12th to allow for scanning etc.

Dates for the Diary must include date, event, venue and time.

Please submit all articles, adverts, letters and queries to the editorial team at: elsenhamsnews@hotmail.co.uk

General Notes

Whilst every effort is made to ensure that information is correct, the editorial team cannot be held responsible for any inconvenience caused through errors or omissions.

The views expressed within this magazine are not necessarily the views of the editorial team or Elsenham Community Association (ECA).

The editors and the ECA can accept no responsibility for the goods or services advertised in the magazine. Advertisements are included in good faith. The editors reserve the right to allow replies to letters/articles to be made in the same edition when appropriate.

The editors' decision is final.

Wanted/For Sale items: village residents may submit details of items wanted or for sale at no charge. These will be included in the next available magazine subject to space and acceptance by the editors.

Subscriptions

Elsenham News is available by email (on a pdf) at no charge, or through the post at a cost of £13 per annum. Contact Sarah, see details below.

Advertising

The costs are as follows:

	Single Insertion	Annual Cost (11 issues)
Half Page	£20	£190
Quarter Page	£10	£100
Inside Page	£50	n/a
Back Page	£75	n/a

Village organisations attract reduced rates, £5 for ¼ page. Half and full-page adverts attract full rates.

To place an advertisement:

For any queries please contact us. Please send your advert as Word or Publisher via email to elsenhamsnews@hotmail.co.uk

Once your advert has been approved and you are happy with it, you will be sent an invoice, which should be paid by BACS.

Flyers

It costs £50 to insert an advertising flyer into the magazine. You must let us know by the deadline of the 12th. You must also provide the flyers.

Editorial Team

Sarah Alder	817660
Marion Giles-Donovan	812763
Heather Baxter	812924

ECA Website

www.ElsenhamCommunityAssociation.org.uk

If you respond to one of the adverts in the magazine, please tell the advertiser that you found them in *Elsenham News*.



UPCOMING EVENTS

Saturday 26 June - Village Fete - 1-4pm

Saturday, 21 August, 3pm – Elsenham Flower Show

VILLAGE CONTACTS

Airport Roadside Parking		0800 731 2385
Beavers	1sthenhamandelsenham@gmail.com	
Bowls Club	Jean Platt	816151
Brownies	Jennifer Jarvis	814434
Church Office (Old Frank's, High St, Elsenham)	Anna Hicks	814285
County Councillor (Stansted)	Ray Gooding	813103
Cricket Club	David Brown	831011
The Crown pub	info@thecrown.info	814444
Cub Scouts	1sthenhamandelsenham@gmail.com	
Cycling Club (Victoria CC)	Doug Yareham	07884 040892
Elsenham Community Association (ECA)	www.ElsenhamCommunityAssociation.org.uk	
ECA (Chairman)	Allan Hathaway	813385
ECA (Secretary)	Moyra Jackson	647351
Elsenham Surgery	www.elsenhamsurgery.nhs.uk	814730
Elsenham C of E Primary School	Linda Reid, Headteacher	813198
Elsenham Church PCC Secretary	David Hill	812397
Elsenham Rights of Way website	www.e-voice.org.uk/erowos/	
Friends of Elsenham School (FOES)	Gemma Mills	07745 036066
Guides elsenhamguides@gmail.com	Gemma Lewis	07792 572423
Henham & District Garden Society	Moyra Jackson	647351
History Society	Mike Rea evhs12@hotmail.co.uk	813634
Member of Parliament	Kemi Badenoch	0207 219 1943
Memorial Hall Bookings	Cheryl Rae	817834
Neighbourhood Watch Co-ordinator	Frances Lambert	07771 728332
	franceslambertnhw@btinternet.com	
Parish Clerk - Louise Johnson	louise.epc@gmail.com	07456 791727
Elsenham Parish Council Website	https://elsenham-pc.gov.uk/	
Police		101
Post Office		812175
Rainbows	Petrina Lees	816675
St Mary's Fabric Fund	Elizabeth Barker	813543
Scouts	1sthenhamandelsenham@gmail.com	
Tennis Club	Petra Studholme	814667
Tots & Toddlers	Trudi Marsh	899864
Uttlesford District Councillors	Petrina Lees	816675
(for Elsenham & Henham)	Garry LeCount	07836 346717
Village Hall Bookings	Annie Gleeson	07809 490731
Village Hall email address	elsenhamvillagehall@gmail.com	
Women's Institute	Gill Hathaway	813385
WI website	www.elsenhamwi.co.uk	
Youth Football Club (Chairman)	Paul Jarvis	814434

If you would like your village organisation contact to appear regularly in the magazine, please contact one of the editors, see Editorial Information for details.



Clifford's

Country Grocers and Farm Shop

Fabulous Quality at Fair Prices

Fresh Fruit & Vegetables

Meats & Poultry

Dairy

Breads, Pastries & Cakes

Cheeses & Deli Range

Beers, Wines & Spirits

General Grocery

Vegan & Free From Ranges

Opening Times | Mon to Sat 08.30 to 5.30 | Sun 10.00 to 16.00

www.cliffords.info



The Barn, Pledgdon Hall,
Nr Henham, CM22 6BJ
Telephone: 01992 676710

orders@cliffords.co.uk

 [Facebook@Clifford's](https://www.facebook.com/Clifford's)



Pig Sty Tea Room

Pig Sty Tea Room | Mon to Sat 08.30 to 5.30 | Sun 10.00 to 16.00
Kitchen closed Tuesdays except for Hot Drinks and Cake.