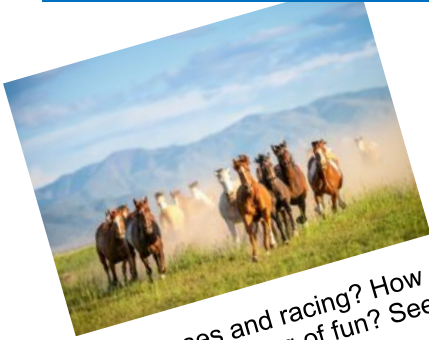


# Elsenham News



Like horses and racing? How about an evening of fun? See page 15



If you are green fingered or want to be, then see pages 27 and 33.



Want to support the Tennis Club and tax your brain? See quiz night details on page 35.



If you enjoy running, see pages 27 and 29.



[elsenhamnews@hotmail.co.uk](mailto:elsenhamnews@hotmail.co.uk)

March 2025  
75p where sold

## Elsenham Village Regular Monthly or Quarterly Activities

Parish Council 1st **Monday** of month 7.45pm (excl. Bank Holidays) Memorial Hall  
 Natter Night 2nd **Monday** of month 7-9pm Golf World Stansted  
 Elsenham EAGLES 4th **Monday** of month 7.30-9pm Bowls and Social Club  
 Henham & District Garden Soc. 1st **Tuesday** of month 2 for 2.30pm Memorial Hall  
 Community Choir 1st & 3rd **Tuesday** of month 7- 8.30pm Village Hall  
 Life Drawing 2nd and 4th **Tuesday** of month 7.30 - 9.30pm Village Hall  
 Village History Society 2nd **Wednesday** of month quarterly 7.45pm Memorial Hall  
 Women's Institute 3rd **Thursday** of month 7.45pm Memorial Hall  
 Gong Baths 4th **Thursday** of month 7.30pm Memorial Hall  
 Church Lunch Club 2nd & 4th **Friday** of month 12.30pm Memorial Hall  
 Elsenham Farmers' Market last **Saturday** of month 12.30 - 2.30pm Village Hall

## March 2025 diary

Mon 3	Parish Council Meeting	Memorial Hall 7.45pm
Tues 4	Henham & District Garden Soc. Outing	
Tues 4 & 18	Elsenham Community Choir	Village Hall 7pm
Sat 8 & 22	Bingo	Bowls & Social Club 7 for 7.30pm
Mon 10	Natter Night	Golf World Stansted 7-9pm
Tues 11	District Councillors' Surgery	Orwell House, Station Road Elsenham 6.30pm
Tues 11 & 25	Life Drawing	Village Hall 7.30pm
Weds 12	History Society AGM & Meeting	Memorial Hall 7.45 for 8pm
Thurs 13	ECA AGM	Memorial Hall 7.30pm
Fri 14 & 28	Church Lunch Club	Memorial Hall 12.30pm
Sat 15	Bowls & Social Club Quiz	Bowls & Social club 7.30 for 8pm
Tues 18	St Mary's Fabric Fund AGM	Old Frank's 7pm
Thurs 20	WI	Memorial Hall 7.45pm
Sat 22	Henham & District Garden Society Question Time	Memorial Hall 2-4pm
Mon 24	Elsenham Eagles	Bowls & Social Club 7.15pm
Sat 29	Famers' Market	Village Hall 12.30 - 2.30pm
Sat 29	Music Night - Around Midnite	Bowls & Social Club 7.30 for 8pm



**Mobile Library \*\* new day\*\***  
**Every third Saturday stopping at Glebe End**  
**9.30am to 10am Next visit: 1 and 22 March**

## Elsenham Village Regular Weekly Activities

Day	Time	Activity	Location
Monday	9.30-10.30am	Zumba	Memorial Hall
	10.30-11.30am	Health walk	Start at De Mandeville Green
	4-4.30pm	Rascals (3-4yrs)	Memorial Hall (term time)
	4.30-5.30pm	Rascals (5-7yrs)	Memorial Hall (term time)
	5.30-7pm	Rascals (8-12yrs)	Memorial Hall (term time)
	7-7.45pm	Pilates	Elsenham Village Hall
	7.30-8.30pm	Shape to the beat	Memorial Hall (not 1st Monday)
Tuesday	9.30-10.15am	Touchpoint Food Share	Bowls & Social Club
	9.30-11.30am	Village Café Coffee	Memorial Hall
	4.45-5.45pm	Rainbows	Memorial Hall (term-time)
	4.45-5.45pm	Beavers	Ugley Village Hall (term-time)
	6-7.15pm	Cubs (Wolf Pack)	Ugley Village Hall (term-time)
	6-7.30pm	Brownies	Memorial Hall (term-time)
	7.30-10.30pm	Tennis Club night	Tennis Courts
	8pm	Fitness Yoga/Pilates	Memorial Hall
Wednesday	9.45-11.30	Tots and Toddlers	Memorial Hall
	5.30-7pm	Slimming World	Memorial Hall
	6.30-7.15pm	Women's strength and Mobility	Village Hall
	7-9pm	Scouts	Ugley Village Hall (term-time)
	7.30pm	Aerobics	Elsenham Village Hall
Thursday	6-7.15pm	Cubs (Bear Pack)	Ugley Village Hall (term-time)
	6.45-7.45pm	Jump Fit	Elsenham Village Hall
Friday	10-11am	Little Fishes	Memorial Hall (term-time)
Saturday	8.15am-1pm	Tarte au Citroen	Playing Field
	9-10am	Dance Scene	Memorial Hall
	9am-12pm	Youth boys & girls football	Playing Field
	8.45-9.30am	Little Kickers Mighty	Village Hall (term time)
	9.35-10.20am	Little Kickers Junior	Village Hall (term time)



**The Hair Loss Clinic**  
 North Hall Road, Ugley  
 07957 166436  
[www.hairlosslaserclinic.co.uk](http://www.hairlosslaserclinic.co.uk)

The Hair Loss Clinic is a company set up to provide information, advice, support and above all solutions for people experiencing hair loss. Not only do we provide realistic and workable solutions to those suffering from hair loss but we are also specialists in after and on-going care for hair loss, giving you the very best support. We can help you through your journey from hair loss through to aftercare if your hair grows back. We provide a personalised service and will recommend the course of treatment or other solutions most appropriate to you.

We provide information, support and advice about your hair loss and identify the factors you will need to consider when choosing which solution is suitable for you.

We provide guidance on cutting and styling of your wig or integration piece and advice on what to do when your hair starts growing back.

Monthly Trichologist clinics are held with Eva Proudman, MIT IAT. Eva is widely known both in the UK and Internationally for her work with hair loss. She has appeared on TV many times and supports many major hair companies with her research into hair loss. All consultations are private and last for between 45 minutes and 1 hour; during this time all relevant areas of health, diet, lifestyle, family history, hair care regime will be discussed along with an in depth examination, including the use of a specialist scalp camera to arrive at a diagnosis and treatment plan.

Whatever the cause of your hair loss or the extent of the hair loss, we are here to help you.

**CLEAR OVENS**

Oven Cleaning Specialists

01279 89 89 96



Make your oven look showroom fresh with a professional clean from **Clear Ovens**. Our fully insured expert technicians will make it shine like new.



Covering Sawbridgeworth, Harlow Epping, Great Dunmow, Braintree, Stansted, Bishop's Stortford and surrounding areas.

01279 89 89 96 or visit us online at [www.clearovens.co.uk](http://www.clearovens.co.uk)

The difference is clear

# THE NEWS REPORT

From The Editors



The weather is at last showing signs of improvement and things are looking to be perking up here in Elsenham.

On the inside pages you will find many activities that will put a spring in your step. Fancy a run? Then join the new running group starting in Henham (see pages 27 and 29). To really feel spring like, perhaps gardening will help you? In which case see pages 27 and 33.

If you prefer to tax your brain, how about a good quiz? See page 35.

As ever, we are grateful to our regular contributors - History Society, WI and Bowls Club to name just a few - who regularly offer events and activities for us all to enjoy.

While we at Elsenham News continue to bring you details of all the events and activities, we also continue reviewing our future options for presenting this information to all village residents.

As the village has grown, the cost of providing a printed magazine for all is fast becoming unaffordable. The revenue we can expect from advertising would not cover the additional copies required, Other contributions in the past have helped, but we would need to secure considerably more money on a secure basis to meet the need.

Deliberations continue and we will keep you posted!

*Did you know that Elsenham News is available on the ECA Website*

[www.elsenhamcommunityassociation.org.uk](http://www.elsenhamcommunityassociation.org.uk)



---

## Regular features

Parish Council	7	U3A	25
Development Developments	9	Cricket Club	27
Village History Society	11	Aubrey Buxton Reserve	29
Daisy May's Farm	13	100 Parishes	31
Elsenham WI	15	Henham Garden Society	33
Elsenham EAGLES	17	Bowls Club	35
District Councillors' Report	19	Tennis Club	37
Ray's Reflections	21	Book review	39
Church Calendar	23	Cookery Corner	41



**T.J. Patmore**  
Building Services

Extensions – Loft Conversions  
 Roof work – Carpentry – Roof Tiling  
 First and second fix carpentry  
 Kitchen fitting  
 Built in wardrobes  
 Decorating interior and exterior  
 Floor and wall tiling  
 Fencing – Decking – Patios  
 Supply and fix u.p.v.c. windows  
 House maintenance

*Call Trevor for friendly help, advice  
and FREE estimates*

mob 07932 666224



**S.E.P**



**TREE CARE & GARDEN  
MAINTENANCE**

Tree Topping & Felling  
 Pruning & Pollarding  
 Hedges cut, Trimmed & Removed  
 All waste Chipped & Removed  
 Garden, Garage & Site Clearance  
 Gravel Driveways & Paths  
 Fencing  
 Turf Supplied & Laid  
 Jet Washing Paths & Driveways  
 Local Tradesman  
 20 years experience  
 For a free estimate Phone  
**07903 621657**  
**08000 588057**  
 14 Day Cooling off Period



# YOUNG'S

## WINDOW CLEANING SERVICE

We specialise in residential properties offering a quality  
and regular service for exterior and interior cleans  
Serving the Elsenham community for the last 10 years

**Call or text Malcolm for a FREE quote**  
**07817 481901**

# ELSENHAM PARISH COUNCIL FEBRUARY 2025

By Louise Johnson, Clerk.

✉ louise.epc@gmail.com ☎ 07456 791727



A lot of research for the outdoor gym project had been going on since November 2023. One of the problems is finalising a position where the gym could be installed on the playing field, whilst not causing any extra noise on the surrounding residential houses and not obstructing any regular users of the playing field.

Many residents and organisations have been consulted, and the Playing Field Committee have taken on board all the issues raised. But this is EPC's land, and the outdoor gym must be installed somewhere. This project is a package of an outdoor gym, outdoor table tennis table and picnic benches. Grants are being applied for to cover all the costs.

A question was raised at the meeting asking why, when Uttlesford District Council are saying that they have kept all increases in their budget low, is the price for the green garden bin being increased by 50%, from £50 to £75? The question has been sent on to our District councillors.

The next project the Climate Change Committee would like to proceed with is changing the streetlights owned by EPC to LED lights. EPC own 14 streetlights mainly in Station Road, some are already LED which use significantly less energy than traditional street lighting options, reducing energy costs and carbon emissions.

The Parish Council is looking into part funding a PCSO with Stansted and Henham from 1 April 2025. So, it was very disappointing news that Essex Police are making all the PCSOs redundant. However, this is not a done deal, the government has just increased their payment to the police by an extra £100 million pounds. Hopefully, this may sway Essex Police to think again.

The potholes in Hall Road continue to be a potentially dangerous problem. Unfortunately, all the Parish Council can do is continue to report them to Highways and our County Councillor.

The Government's plan for devolution would not affect Parish Councils. The number of local authorities in Essex could be reduced from 15, to two or three and a new mayor for the county could be voted into office in 2026. But this is early days and there are a lot of issues still to be finalised.

The next Parish Council meeting is scheduled for Monday March 3 in the Memorial Hall at 7.45pm. The meeting is open to members of the public.

## **GARDEN HINT** *By Sue Johnson*

Go peat-free: For sowing seeds and potting-up plants, buy peat-free compost. Be aware that unless clearly labelled "peat-free" then it is likely to contain peat.



# Pike's Plumbing & Heating

Whether you're looking for a plumber or heating engineer, Pike's Plumbing & Heating can help.

If it's an emergency, simple problem or you're just thinking about a new boiler or bathroom give me a call – I'm available when you need me 24/7. Now's a good time to think about servicing your boiler too and make sure you're not left out in the cold! **No Call-Out Charges & Free Quotations**

Tel: **07889 140035**

**Craig Pike**

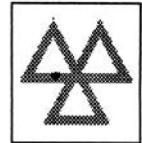
Email: **info@pikesph.co.uk**

Web: **www.pikesph.co.uk**



## **GARRETT'S** GARAGE SERVICES

42 Golds Business Park, Elsenham  
Bishop's Stortford, Herts CM22 6JX



- Mechanical Repairs
  - Servicing
  - Tyres
  - Engine Tuning
  - Computer Diagnosis
  - Windscreen Repairs
  - M.O.T.'s - Catalyst & Diesel Tested
  - E.H.D.C. - Authorised Hackney Carriage Testers
  - Batteries
  - Exhausts
- MODERN WELL MAINTAINED WORKSHOP*
- ALL MAKES OF VEHICLE*
- \*FREE COLLECTION AND\*  
\*DELIVERY SERVICE\**

**TEL: 01279 647777    FAX 01279 817622**



# DEVELOPMENT DEVELOPMENTS

By *Graham Mott* ☎ 812516 ✉ [motts@grahammott.plus.com](mailto:motts@grahammott.plus.com)



Back in June 2023, a planning application to erect five large houses on land to the south of The Old Vicarage in Hall Road was refused. A much revised application for five three-bedroom bungalows has now been approved by Uttlesford District Council. The applicant explained how the Grade 2 listed, eight-bedroom house, with several outbuildings, deteriorated into its present sad state after an ill-advised letting to tenants who turned it into a cannabis farm, followed by wholesale vandalism when the farmers were evicted. The owner undertook to use the proceeds from the new bungalows to refurbish the property, at a cost estimated by specialists at over £300,000 (not including the swimming pool, because they lack expertise). It was argued, surely reasonably, that as the land is surrounded on three sides by a development of no fewer than 130 new homes, any impact from a modest five bungalows would be minimal. The village is much in need of bungalows for down-sizing purposes - developers keep their number to an absolute minimum because of their relatively large footprint.

The first two of the 130 houses surrounding The Old Vicarage are now occupied. The main point of entry for construction vehicles has been switched from the main access, north of The Old Vicarage, to what will eventually be the emergency access, near to Abbotsford Bridge. The developers have conveniently forgotten that the authorised route is by turning right out of the site towards Takeley, whereas a mud trail clearly shows that many vehicles are turning left in order to go through the village and then on through Stansted. Enforcement action has been sought regarding this blatant ignoring of the agreed commitment.

Uttlesford District Council's Local Plan continues its slow progress. The Plan has been submitted and two inspectors have been appointed. They have issued their 'Initial Comments and Questions to the Council', to the number of 14, which make for interesting reading (well, OK, interesting if you like that type of thing). They ask firstly for clarification as to exactly which documents are included. They are severe on the failure to identify strategic policies clearly:

*We note that strategic policies are labelled as core policies in the Plan, but those core policies include a wide range of matters, many of which deal with detailed matters rather than being primarily concerned with setting out the overall strategy for the quantity and distribution of new development. We consider the Council should give further thought to the identification of strategic and non-strategic policies.*

They also say that the Council should be clear as to whether the inspectors are being asked to recommend modifications; if not, the Plan will either be adopted or rejected. They refer also to various statements of common ground which are lacking, and whether a Statement of Community Involvement is included.

There are some radical questions here, suggestive of haste in submitting the Plan. There could be a tight finish between eventual adoption of the Plan and the merciful abolition of UDC itself.

## CHIROPODIST & PODIATRIST

Bishop's Stortford

- Orthotics
- Diabetic Foot Care
- Saturday Clinics
- Routine Treatment

R. Handford & Colleagues  
H.C. P.C Registered

Bishop's Stortford - 16 Hockerill Street

**01279 652249**

[www.feet.org.uk](http://www.feet.org.uk)

# Binwash

We clean  
your  
wheelie  
bins!

Commercial & Domestic



Low cost & highly efficient service!

Professional machinery

4 weekly schedule or one-off clean

High pressure wash and dried

Disinfected and deodorised

[www.binwash-uk.com](http://www.binwash-uk.com)

**01799 529899**

[enquiries@binwash-uk.com](mailto:enquiries@binwash-uk.com)



Street Dance  
Pop Singing  
Acting

**FREE**  
Trial  
Offer



New classes in  
**Elsenham**

For more details:

Tel: 01376 331543

Email: [admin@rascals-uk.com](mailto:admin@rascals-uk.com)

Web: [www.rascals-uk.com](http://www.rascals-uk.com)

Fun classes  
inspiring Confidence,  
Character & Creativity  
for children aged 3-12yrs



**DECORATING SERVICES  
ALL ASPECTS OF DIY**

**NO JOB TOO SMALL**

For a friendly reliable service  
Just Ask.....

**GARY KING**

Home : 01279 850001

Mobile : 07951 452602

[g.king962@btinternet.com](mailto:g.king962@btinternet.com)

# ELSENHAM VILLAGE HISTORY SOCIETY

By Mike Rea, Secretary ☎ 813634 ✉ evhs12@hotmail.co.uk

🌐 www.elsenham-history.co.uk

---



We have recently unearthed a short list of wells that used to be in the village. There are five listed all now out of use and made safe. They are:

- The Kennel's Gaunts End (formerly the Keepers house)
- Opposite Hale's, Gaunts End
- Elsenham Jam Company
- Messrs Gold Bros Ltd Nurseries, New Road

The fifth and most prominent of these of course is the pump house at the foot of Park Road originally built by Sir Walter Gilbey in 1896 as a memorial to his late wife. The original shaft was dug eighty three feet (25M) deep. At a later date it was bored considerably deeper by G Ingold who fabricated many pumps in the local area. No-one knows for sure just how deep the shaft goes but estimates range from 120 to 150 feet (36 – 54M). It served the Village until the late 1950s when the shaft showed signs of collapse and the pump was deemed too dangerous to use. The pump itself was removed and a concrete cap placed over the shaft. The only part of the pump still extant is its handle. It should be noted that mains water didn't arrive in the Village until 1938 when a supply was laid in from Henham. This supply served the High Street, Robin Hood Road and Station Road. Residents in Stansted Road had to wait a few years more for a main to be laid from Stansted.

Of note also was the fact that the dome of the pumphouse was covered in gold leaf. This was said to shine so brightly that it was apparently covered by a tarpaulin during the second World War to stop the German bombers using it as a navigational aid.

If you know any more about these wells or any others in the village (maybe there is one in your garden?), we would be delighted if you would get in touch with details so we can add some more pieces to the Elsenham jigsaw.

Our next meeting will be held on Wednesday 12<sup>th</sup> March at 8pm in the Memorial Hall and will include our AGM. The speaker for the evening will be our Chairman Ray Franklin who, in his own inimitable style will tell the story of St Mary's Church. Visitors are always welcome at our meetings for a very modest two pounds but even better, membership still costs just five pounds for a full years meetings. A bargain!



- alun
- design
- consultancy
- architectural design
- planning
- project management
- interior design

Local architecture company with over 25 years experience designing and obtaining approval for new homes, extensions and conversions

Free consultation  
01799 540 600

[info@alundesign.com](mailto:info@alundesign.com)

[www.alundesign.com](http://www.alundesign.com)

Neville House, Station Road,  
Wendens Ambo, Saffron  
Walden, Essex, CB11 4LB

# DANIEL ROBINSON & SONS

Independent Family Funeral Directors & Monumental Masons

Est 1892

Always here when you need us...

- Arrangements in the comfort of your own home, if preferred
- Private Chapel of Rest
- Pre-paid funeral planning services
- Traditional & contemporary funerals to suit your wishes



79/81 South Street  
BISHOP'S STORTFORD  
01279 655477

[www.drobinson.co.uk](http://www.drobinson.co.uk)



## Daisy May's Farm

Hall Road, Elsenham, CM22 6DN

Cor, it's been a bit blowy lately! Whilst the wind makes a bit of a mess of our farm (don't even mention the mud!), our gorgeous animals are all snug and looking forward to having lots of visitors to come and make a fuss of them.

Our small animals are cosily tucked away and our pigs love snuffling away in the woodland area and being amongst the trees. There is a lovely walk round the woodland area which you can enjoy.

There really is so much for you to do at the farm including **riding on our train**, meeting the **new lambs** and **kid goats**, **holding chicks and ducklings**, enjoying **warm drinks and snacks**, **seasonal arts and crafts** and more!

We have all sorts of chickens, ducks, guineafowls, turkeys, and geese and don't forget, we often have chicken and sometimes duck eggs for you to buy.

Come down to our farm, blow those cobwebs away, and meet all our new additions who will be born over the coming months.

Check our Facebook page for news on our latest arrivals, opening hours and for any new events such as our **Hatch a Chick** scheme, which is now up and running again, along with other farm news updates.

We look forward to welcoming you to the farm.

We **always** need help in so many ways, particularly when there is **so** much to do. So if you have a little time to spare, **please** get in touch, we would **love** to hear from you. Please contact ' 07747 787973 or take a look at our website 8 [www.daisymaysfarm.org](http://www.daisymaysfarm.org) to find out more. Thank you so much.

## ELSENHAM COMMUNITY ASSOCIATION

*By Allan Hathaway, Chair*

The Annual General Meeting of the Elsenham Community Association will be held as per usual in the Memorial Hall on March 13 at 7.30pm. All are welcome. There will be some drinks and nibbles available after the meeting.

We now have super-fast full fibre WiFi in the Memorial Hall. This is free for anyone to use and was provided for us by **Gigaclear** as a Community Hub.

The password will be made freely available for all users of the facility.



# TRADITIONAL DRIVEWAYS

☎ 01992 450356  
☎ 07961 882027

✉ [tdmaintenance@btinternet.com](mailto:tdmaintenance@btinternet.com)  
[www.tdms-driveways.com](http://www.tdms-driveways.com)

Block paving specialists. Black and red tarmac. Hand and machine laid tarmac. Turfing and fencing. Residential and commercial. All work guaranteed. Free estimates.



## LOGS LOGS LOGS

- Well seasoned hard wood
- Transit load / bulk builder bag
- Cut to fire size

Call today ☎ 01279 718555  
Or email ✉ [dar13@mail.com](mailto:dar13@mail.com)



# BURY LODGE

HOTEL | WEDDINGS | EVENTS

Weddings – Parties – School Proms – Wakes – Dinner & Dances – Corporate Events

We are a family run 16<sup>th</sup> century barn, and we can accommodate up to 250.

Using this code BURY10 you will receive 10% off any booking made from this advert.

Email: [teresa@burylodge.com](mailto:teresa@burylodge.com)  
Tel: 07741845201 / 01279 816737  
Bury Lodge Lane, Stansted, CM24 8QE

# ELSENHAM WOMEN'S INSTITUTE

By Moyra Jackson ☎ 647351



Anyone else looking forward to better weather? It could be an age thing but this seems to have been a really long winter.

For our last meeting we welcomed Ray Franklin and Mike Rea from the Elsenham Village History Society who told us all about Elsenham, Village of a Thousand Years. The talk was enlightening and very amusing and the photographs were excellent. It was a great way to start our year.

Our Resolutions meeting went well with lively discussions taking place for each of the four resolutions. It was very well attended considering how poor the weather was that evening. The Resolution chosen by our assembled group was to improve the situation regarding recycling medical packaging. Our votes are included with those across Essex and then added to the national total for ratification at National Federation of Wis' Annual Meeting in June.

Our next meeting is on Thursday 20 March and it is local milliner Susan Widlake coming along to present her talk on 'Wherever I Lay My Hat'. Having heard Susan talk and attended one of her workshops, I know we are in for a real treat. The competition is a topical 'Your Favourite Headgear'.

Coming along to Elsenham WI is a really good way to make friends especially if you are new to Elsenham. The 'Jam and Jerusalem' traditions of our formation in 1921 have allowed us to grow and develop into the modern and forward-looking WI that we are today. We are happy to dispel any of the stereotypes associated with the WI – but our cakes are delicious! Why not come along (or come back) – visitors and new members are always welcome and you can join at anytime throughout the year.

*Details of our programme, events and activities can be found on Facebook, Twitter and Instagram – search for Elsenham WI. Visitors are welcome to our monthly meetings so please come along. We meet at 7.45pm on the third Thursday in the month in the Memorial Hall.*

**Elsenham WI – There's a lot going on!**

## SAVE THE DATE

**Race Night** in aid of Elsenham Community Association **Friday, April 4 at Elsenham Memorial Hall.**

Doors open at 6.45 for a 7.30pm start. £10 per ticket includes Ploughman's and nibbles. (Please advise of any dietary requirements.) Bar: Cash payments only.

Please contact Sue to book your place ☎ 07956 899326 or email

✉ [suewaite2003@yahoo.co.uk](mailto:suewaite2003@yahoo.co.uk)



**Double Glazed Units – SAME DAY**

- Table Tops
- Shelves
- Emergency Glazing
- Replacement Misted Double Glazing
- Greenhouse Glass
- Cat and Dog Flaps Fitted
- Splash Backs – Any Colour
- Glass Cut To Size
- Emergency Boarding
- Safety Glass
- Mirrors

**LOCAL COMPANY – GREAT PRICES – RELIABLE PROMPT SERVICE**

**Elsenham – Great Dunmow – Bishops Stortford - Stansted**



**01279 871 777 - 0800 587 2556**

6 Newman Road, Little Canfield, Dunmow, Essex, CM6 1GR

# MEDIACOMS

**Aerial Satellite | AV Security**

- Aerial Installations
- CCTV & Security Alarms
- Audio Visual Installations
- Wireless & Wired Networks
- Solar Panel Installations
- Sky Installations & Subscriptions
- Freesat Installations & Receivers
- Multiroom Music & TV Distribution
- TV Wall Mounting Services
- Family Run Business



[www.mediacoms.co.uk](http://www.mediacoms.co.uk)

[info@mediacoms.co.uk](mailto:info@mediacoms.co.uk)



# ELSENHAM EAGLES

## Elsenham Action Group for Local Environmental Sustainability

✉ [elsenhams.action@btinternet.com](mailto:elsenhams.action@btinternet.com)

---



### Printer ink cartridges

A huge thank you to everybody who has been putting their used ink cartridges in the recycling boxes at Elsenham Station, Elsenham Post Office and Elsenham WI. In 2024, recycling the cartridges raised £60 towards the work that EAGLES are planning to do in the village. The box taken to WI meetings has also raised £17 for Elsenham Primary School. So, recycling printer ink cartridges in this way is well worth doing.

(Please remember that cartridges should not be going into landfill bins as, being plastic, they will just languish in the environment for the next 100+ years.)

### REFILLit

A great way to reduce your consumption of single use plastics and help the planet and the oceans, is to bring your own containers to fill with food ingredients and cleaning products. A delivery service is also available. REFILLit have a range of rice, grains and pasta, herbs and spices, nuts and seeds, baking ingredients and dried fruit as well as cleaning liquids and powders, hand soap and shampoo.

REFILLit visits Elsenham Playing Field on Fridays from 12.30 - 3pm and Elsenham Farmers' Market on the last Saturday of the month 12.30-2.30pm. You can follow them on their Facebook page or website [www.refillit.org.uk/](http://www.refillit.org.uk/) to find out where the REFILLit converted milk float will be.

### Bat Walk

We will be holding another Bat Walk in the late spring. To be kept informed, please email us at the address above to be included on the EAGLES mailing list.

Thank you to The Crown for hosting us for the last two years and good luck to the Willets in their future endeavours. Thanks to our new hosts, the Bowls and Social club.

---

### Single Fare Cap Scheme

**Ray Franklin (Parish Council Transport Representative).**

The current £2 cap on single bus fares had been due to come to an end on 31 December 2024. From 1 January 2025 through to the end of December 2025, the new single fare cap is set at £3 to ensure people across the county can access affordable bus fares and better opportunities all over the county. This will particularly benefit passengers in rural communities and towns and will save passengers up to 80% on some routes.

The contracted services **both 7 & 7A** benefit from the cap fare scheme.

**Use the Bus or Lose the Bus.**

# E. N.C. Electrical Limited

Industrial Agricultural Domestic

Electrical Installations

Fire Alarms/Emergency Lighting

Fault Finding

Portable Appliance Testing

Fixed Wiring Test & Inspection

Over 25 Years Experience in the  
Electrical Industry

Contact: Ian Arran

Tel. 01279 647042  
Mobile 07776 252994



Email: enelectri-  
calltd@btinternet.com

44 Alsa Gardens Elsenham  
Bishop's Stortford Herts, CM22 6HB

replaceglaze<sup>inc</sup>  
Replace, Repair & Revive Your Double Glazing

All types of double glazing repairs, maintenance & installations, including emergency callouts. At [replaceglaze.com](http://replaceglaze.com) we provide a reputable, family-run double glazing repair & installation service.

Our services include:

- Double glazing installations, repairs & maintenance
- Aluminium, composite & uPVC installations
- Windows & door handles
- Locks & hinges
- Misted units
- Patio door wheels
- Door adjustments & lubrication
- Aluminium bifolding doors
- Composite doors
- Aluminium/uPVC roof lanterns

01279 282997 01371 701000

[info@replaceglaze.com](mailto:info@replaceglaze.com) [www.replaceglaze.com](http://www.replaceglaze.com)

[replaceglaze](https://www.instagram.com/replaceglaze)

## TAKELEY IRONING & DRY CLEANING

OPENING TIMES  
MONDAY - FRIDAY 8AM - 5PM  
SATURDAY 8AM TO 12PM

### FREE LOCAL COLLECTION & DELIVERY TO YOUR DOOR

Takeley, Elsenham, Henham, Stansted, Felsted, Hatfield Broadoak, Hatfield Heath, Sheering, Dunmow, Sawbridgeworth, Broxton, Spellbrook, Molehill Green, Broxton, Little Canfield.

- ✓ WASHING & IRONING
- ✓ IN HOUSE DRY CLEANING
- ✓ 48 HOUR SERVICE
- ✓ DUVETS
- ✓ CURTAINS
- ✓ ALTERATIONS
- ✓ WEDDING DRESSES

The Centre, Dunmow Road (Behind Londis)  
Takeley, Bishops Stortford  
Herts, CM22 6SH

Email: [takeleyironing@gmail.com](mailto:takeleyironing@gmail.com)  
[takeleydrycleaning@gmail.com](mailto:takeleydrycleaning@gmail.com)

Tel: 01279 871245

# DISTRICT COUNCILLORS' REPORT

✉ [Cllrdonald@uttlesford.gov.uk](mailto:Cllrdonald@uttlesford.gov.uk)

☎ 07941 880279

✉ [Cllrlees@uttlesford.gov.uk](mailto:Cllrlees@uttlesford.gov.uk)

☎ 07713 074656



The Local Government Constitutional Reform and Devolution proposed reforms are the greatest to affect Local Government for 50 years. Uttlesford was formed in 1974. The Government have agreed that Essex is on the “fast track list” for 2027/28.

Devolution consists of the Unitary Authorities – Southend, Thurrock and Essex County Council – no longer existing and a strategic Mayor will be elected.

Local Government reform involves all District Councils, including Thurrock and Southend to merge into Unitary Authorities. At the time of writing Essex Leaders have voted in principle for five Unitary Authorities. The Government guidelines has been 500,000 residents per authority, (Essex has a population of just over 1.8m). We believe that is too high a number, per authority and will be presenting to the Government strong robust evidence for five.

The Council agreed that the creation of new unitary authorities must be based on all (awaited) material evidence, including local synergies, and it reaffirms its core intent always to work to achieve the best outcomes for both the current and future Uttlesford residents and businesses of a new unitary authority.

As Essex County Council will not be disbanded for at least two (and possibly three) years, and as setting up a new Mayoral-led Strategic Authority would be entirely separate to the normal work of councillors, the May 2025 County election should go on as scheduled; to cancel it would deny Uttlesford residents their vote including increased representation from the increase in number of electoral divisions covering Uttlesford for Essex County Council (increased from four to five).

At the Cabinet meeting held on September 5 2024, members agreed to adopt a new approach to funding voluntary and community sector organisations by moving from one-year applications to a three-year outcome-focused commissioning process. This will ensure better stability and long-term planning. Organisations and projects will benefit from consistent funding.

If you are a properly constituted voluntary organisation or similar body in Uttlesford you can apply for a Health and Wellbeing grant of up to £5,000 to fund pilot projects and services or for a one-off event.



***Continued on page 21***

## Luxury Toilet Hire (UK) Ltd



Whether you are arranging a wedding, private party or corporate event, let Luxury Toilet Hire (UK) Ltd provide you with the perfect toilet facility to make your occasion a memorable success.

Cesspit emptying also undertaken.

Tel: 01371 873003 or 01279 504638

Email: [info@luxurytoilethire.co.uk](mailto:info@luxurytoilethire.co.uk)

Web: [www.luxurytoilethireltd.co.uk](http://www.luxurytoilethireltd.co.uk)



We also hire out mobile fridge and freezer units.



Please contact us for a quote:

Tel: 01371 873003 or 01279 504638

Email: [info@chillermatic.com](mailto:info@chillermatic.com) Web: [www.chillermatic.com](http://www.chillermatic.com)

## hpc (State Registered) Chiropodist

CH09088

### Home Visiting Practice

Mrs. Julie Golden  
*Est. 1994*  
01279 873492

A professional service at a competitive rate

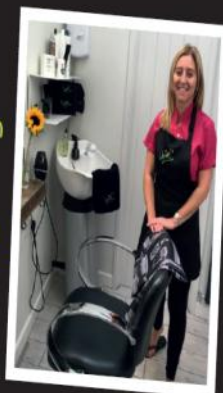
# Clare's Gents hairstylist

@ Rickling Green

★ Appointments from 7am Mon-Sat

★ FREE easy parking

★ Fully qualified & insured



Call: 01799 542424

Text: 07791 058406

City & Guilds  
Qualified

## DANCE SCENE

New Classes Every Saturday  
morning Elsenham Memorial Hall

Baby Ballet - 9:00-9:30

Junior Ballet - 9:30-10:00

Musical Theatre/ Street - 10:00-10:45

(Ages 3-5)

(Ages 6-8)

(Ages 5+)

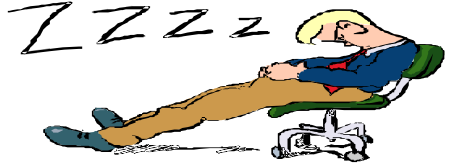


For more information and to book a free trial please contact-

Lorraine Hodges -07711 745193  
[lorraine@dancescene.me.uk](mailto:lorraine@dancescene.me.uk)

Come along to our new fun classes and get involved at our well established dance school!





## Elsenham Church

Saint Mary's Church Elsenham is affectionately known as "The Little Norman Church on the Hill." It has a very long history being mentioned together with a water mill within the pages of "The Domesday Book" and is over 1,000 years old. Initially the site of an earlier Anglo Saxon Church, it has undergone many changes over the centuries. Indeed, work is being carried out today, toilets and rooms being built within its boundaries.

Top quality architectural works with the addition of a new north porch added in the 19<sup>th</sup> century can be found within the building. If you look around, you cannot help but notice the beautiful timbered roof and the fine internal carvings. Note the altar, it was constructed in 1908 and made of oak which was grown on the Elsenham Hall Estate. Although the pulpit is modern it still retains the original stem of 1626. The Elsenham Village History Society has a list of nearly fifty vicars, going back to 1322. The Society is meeting on March 12 at 7.45pm at the Memorial Hall where there will be a talk on the history of the church. If you would like to know more and see photos illustrating the church and its contents wander down there, I know you will be made most welcome.

Ray  
Franklin

---

### **Continued from page 19**

The application deadline is midday March 10.  
[www.uttlesford.gov.uk/one-off-health-and-wellbeing-grant](http://www.uttlesford.gov.uk/one-off-health-and-wellbeing-grant)

We are aware that the rising cost of everything is making it difficult to make ends meet. Please visit the Council Website which shares information on some of the help that is available within the district, some handy hints, and tips to help you, and general information to lighten the load.  
[www.uttlesford.gov.uk/cost-of-living](http://www.uttlesford.gov.uk/cost-of-living)

We will be holding our usual monthly surgery on Tuesday March 11, Orwell House, Station Road Elsenham at 18.30. We look forward to meeting residents without making any prior appointment. As ever, of course, we would be very happy to hear from any residents by email or phone should there be anything they think we can help with or answer any questions you may have on our report, or the District Council.

**ST MARY'S CHURCH ELSENHAM**  
Office@heuchurch.co.uk  
**Thought For The Month** by *Louis Wilson*

There was once an elderly Italian gentleman who loved to grow tomatoes in his back garden. But the garden was so rocky that he had to rely on his son Vincent to dig it for him.

And then one year, Vincent was put in prison and the old man wrote to him saying:

Dear Vincent, I'm feeling so sad. I can't grow tomatoes this year because, as you know, I'm too old to dig the garden by myself. I know that if you were here, you would love to do it for me. Signed your loving father.

A couple of days later, the old man got a letter back from his son which said:

Dear Dad,  
Whatever you do, don't dig the garden!  
That's where I buried all the bodies. Lots of love, Vinnie.

Very early the next morning, there was a knock at the door and in came large numbers of FBI agents and police officers. They dug up every inch of that back garden. They dug and they dug, but they did not find a single body. Two days later, the old man got another letter from his son:

Dear Dad,  
I'm sorry about that. But it was the best I could do in the circumstances. You ought to be able to plant those tomatoes now.

It was not an obvious way to get the garden dug. But it illustrates an important truth of the Christian life:

God is in control. He knows what he's doing. But to us, it may not always look like it, and he doesn't always do things the way we would.

When I was first ordained, I worked at a church which I would probably not have chosen. I was set to serve elsewhere, but rather late in the day it fell through, which left me with limited options. Years later, I realised that had I gone to my chosen church, that would have set me on a very different course. I would never have spent ten years leading a small church in Sussex. While those years were not at all easy or straightforward, I dare to think they were the most extraordinary ten years of my life (to date). Yet if I'd had my choice, they would not have happened. In all the chaos, God had a plan. He always does.

With great thanks to Derek Ward and others, the building project at Henham Church is now finished. When it closed in September 2023, most of our Henham Sunday morning congregation joined with our 10.15 am congregation meeting in Elsenham Village Hall.

This has resulted in a vibrant and often very well-attended weekly service. But more than that, two separate congregations have become one. This was not something we envisaged at the outset, but God is in control and we trust that this service will continue to thrive, and also benefit from all that the reordered Henham Church building will offer. We'd love to invite you to come along and see for yourself. All the details are at [www.heuchurch.org](http://www.heuchurch.org)

# CHURCH EVENTS IN OUR VILLAGES MARCH 2025

## Church Services

### Sunday 2<sup>nd</sup> March

- 10:15** All Together All Age Service,  
Elsenham Village Hall  
**18:00** Sunday@6, HUSCH\*, Henham

### Sunday 9<sup>th</sup> March

- 08:45** Prayer Book Holy Communion,  
Elsenham Church  
**10:00** Morning Service, Ugley Church  
**10:15** Morning Service,  
Elsenham Village Hall  
**18:00** Sunday@6, HUSCH\*, Henham

### Sunday 16<sup>th</sup> March

- 08:45** Prayer Book Morning Prayer,  
Elsenham Church  
**10:00** Prayer Book Holy Communion,  
Ugley Church  
**10:15** Morning Service  
Elsenham Village Hall  
**18:00** Sunday@6, HUSCH\*, Henham

### Sunday 23<sup>rd</sup> March

- 08:45** Prayer Book Morning Prayer,  
Elsenham Church  
**10:00** Morning Service, Ugley Church  
**10:15** Morning Service,  
Elsenham Village Hall  
**18:00** Sunday@6, HUSCH\*, Henham

### Sunday 30<sup>th</sup> March

- 10:30** All Together All Age Service,  
Henham Church  
**18:00** Sunday@6, Henham Church

### Friday 7<sup>th</sup> March

#### World Day of Prayer 2025

Elsenham Memorial Hall  
**14:30** Informal Service  
followed by refreshments

### Wednesday 26<sup>th</sup> March

#### Ladies' Pudding Evening, 7.30pm at Henham Church

Desserts, drinks, quiz, craft and a chance  
to reflect on the important things of life.  
All ladies welcome!

## Other Regular Events

### SUNDAYS:

**Elsenham & Henham Sunday Club/  
Explorers (Reception-Y5)**  
(Y1-Y6) Starts at EVH then on to  
Old Frank's, Elsenham, 10.15am  
9<sup>th</sup> 16<sup>th</sup> & 23<sup>rd</sup>

### **Pathfinders (Y6-Y9)**

**HUSCH\*, Henham 6.00pm - leave  
from service to meet in the Church  
Hall, Henham.**  
2<sup>nd</sup>, 9<sup>th</sup>, 16<sup>th</sup>, 23<sup>rd</sup> and at Henham  
church on 30<sup>th</sup>.

### **Crammin' (Y10-Y13)**

**HUSCH\*, Henham 6.00pm followed  
by 7.00pm at OSCA, Henham**  
2<sup>nd</sup>, 9<sup>th</sup>, 16<sup>th</sup>, 23<sup>rd</sup> and at Henham  
church on 30<sup>th</sup>.

### MID-WEEK AND SATURDAY:

#### **Start the Week with Prayer**

**Old Frank's, Elsenham 9.30am**  
Mondays: 3<sup>rd</sup>, 10<sup>th</sup>, 17<sup>th</sup>, 24<sup>th</sup> & 31<sup>st</sup>

#### **Seekers After School Bible Club**

**(Y3-Y4) Old Frank's 3.20pm**  
Mondays: 3<sup>rd</sup>, 10<sup>th</sup>, 17<sup>th</sup> & 24<sup>th</sup>

#### **Christian Play (Y1-Y2)**

**Rowan House, Elsenham 3.15pm**  
Tuesdays: 4<sup>th</sup>, 11<sup>th</sup>, 18<sup>th</sup> & 25<sup>th</sup>

#### **Little Fishes Pre-School Group**

**Church Hall, Henham 10.30am**  
Thursday: 6<sup>th</sup>, 13<sup>th</sup>, 20<sup>th</sup> & 27<sup>th</sup>

#### **Little Fishes Pre-School Group**

**Elsenham Memorial Hall 10.00am**  
Fridays: 7<sup>th</sup>, 14<sup>th</sup>, 21<sup>st</sup> & 28<sup>th</sup>

#### **Church Lunch Club**

**Elsenham Memorial Hall 12.30pm**  
Fridays: (2<sup>nd</sup> & 4<sup>th</sup> Friday of the month):  
14<sup>h</sup> and 28<sup>th</sup>

\* **HUSCH:** Henham & Ugley School Hall

For information on all these events,  
please contact [office@heuchurch.co.uk](mailto:office@heuchurch.co.uk)

**WE PUT THE HOT IN YOUR  
WATER & THE HEAT IN  
YOUR HOME**

- Central Heating, Boiler replacement
- Boiler servicing & Repairs
- General Plumbing



Call Mark - 07908005478  
Email - nelsonplumbingheatingltd@gmail.com

**Nelson & Sons Plumbing  
& Heating LTD**



**DREAM, EXPLORE, Discover**

**OFFER  
10%  
OFF**  
YOUR NEXT BOOKING  
USING THIS ADVERT.

**YOUR LOCAL *Personal Travel Consultant***

We can look after all your travel requirements including hotels, flights, package holidays, villas, cruises, car hire and much more.

\*Subject to availability. Only available on selected deals. Please mention advert when requesting a quote.

Carla Jayne at Hays Travel    cj\_haystravel

01279 886731 | 07590 804702 | carla.jayne@hays-travel.co.uk  
haystravel.co.uk/personal-travel-consultants/carla-jayne

**Hays Travel**

**Advertise your business in  
Elsenham News  
Contact us at**

**elsenhamnews@hotmail.co.uk**



The increased provision of comfortable seating was necessary for the first General Meeting to be held at St Theresa's Centre when a record audience of 107 people gathered to hear a personal account of one of the RAF's most daring World War II missions: the raid on Amiens Prison, often referred to as "Operation Jericho".

The following Saturday the first Seminar of 2025 took place in the same venue.

Our next Saturday Seminar on 8<sup>th</sup> March is entitled "Rockets and Spaceflight". The speaker, Professor Tony White, is an Emeritus Professor of Systems Engineering, Middlesex University and is a member of the Stansted Mountfitchet u3a. The seminar will start with the history of rockets from their invention by the Chinese to the rocket pioneers in the 20<sup>th</sup> century. It will move on to the rise of amateur rocket groups in the 1930s to the massive expansion during WW2. It will cover post-war delivery systems, the moon shots and manned spaceflights along with a comprehensive explanation of rocket propulsion.

A wonderful collection of short stories has been published by the Stansted Mountfitchet u3a Creative Writing Group. Entitled "After the Twa Corbies and Other Stories" it contains a fascinating pot-pourri of styles and genres; from the surreal to the ridiculous. Loss, love, mystery, nostalgia and humour; it's all there. The limited edition of 100 copies was so popular that it sold out by Christmas 2024. However, the book will be available in the local library for those who were unable to purchase a copy.

Having negotiated any difficulties in producing their first book, the group, which meets monthly and has been running for five years, is intending to publish a second in time for Christmas 2025. With even more stories, it promises to be just as sought after. Will there be a third? That remains to be seen!

---

## **World Day of Prayer 7<sup>th</sup> March 2025 by Felicity Savage**

World Day of Prayer is a global service held on the first Friday of March each year. Join with people from Henham, Elsenham and Ugley churches at 2.30pm on Friday March 7 in the Memorial Hall, Elsenham for an informal service followed by refreshments. Each year the service is prepared by Christian women from a different country. This year the women of the Cook Islands have prepared a service with the theme "I made you wonderful" based on Psalm 139. The Cook Islands are a group of 15 islands in the South Pacific Ocean, which have a Maori heritage and a deep association with nature. The service shows their life and culture, whilst being rooted as reflections and prayer based on "I praise you, for I am fearfully and wonderfully made" (Psalm 139: 14).

Everyone is welcome to the informal service followed by refreshments.

# S. PERRY CHAPEL END NURSERY

SEED POTATOES ONION SETS & SHAL-  
LOTS  
POTTED SPRING BULBS, SUMMER FLOWERING BULBS

SEED & CUTTING COMPOST  
25 Litre Bag  
£5.25 EACH 3 For £13.50

HORTICULTURAL GRIT  
COLOURED GRAVELS  
PEBBLES COBBLES

ROFFEY  
MULTIPURPOSE COMPOST  
70 Litre Bag  
£9 EACH 3 For £23.75

WE ARE  
HERE



**COUNTRY VALUE SEEDS**  
**Most 99p per PACKET**  
**Mr Fothergills Seeds**  
**Buy 5 Packs get Cheapest Free**

OPEN 9am to 5 pm  
MONDAY TO SATURDAY (CLOSED SUNDAYS)  
MOLEHILL GREEN ROAD  
BROXTED DUNMOW ESSEX CM6 2BW  
01279 850771

VEGETABLE PLANTS  
BASKET & TUB PLANTS  
ALPINES  
HERBACEOUS  
HERBS  
ROSES  
SHRUBS  
POND PLANTS  
AQUATIC COMPOST  
GODWIN COMPOST  
WILD BIRD FOOD  
SUNDRIES

# Mat Duxbury

## PAINTING



Professional Interior and Exterior Painting Specialist

References available on request

20 Years' experience

Fully Insured

NVQ Qualified and Health and Safety Certified

Local, reliable and friendly service guaranteed

For a free estimate please contact Mat on ☎ 07810 250426 or  
email ✉ [mat@duxburypainting.co.uk](mailto:mat@duxburypainting.co.uk)

ELSENHAM



## NEWPORT & DISTRICT FLOWER CLUB

Contact Patricia Sanz ✉ [flowersanzp2020@gmail.com](mailto:flowersanzp2020@gmail.com)

---

### March into Friendship, Fun and Flowers

Our club evening title for 19 March is 'March Floral Marvel' this will be a demonstration by Gill McGregor who is a renowned International Floral Art designer, author, demonstrator and teacher. We are delighted to welcome her back for another evening of stunning displays at our club on 19th March 2025 at 7pm. Please do come along and bring a friend with you. This evening is one not to be missed.



We meet on 3rd Wednesday of the month (except January, August, and December) at 7pm at Ugley Village Hall, Cambridge Road, CM22 6HR. Contact Patricia Sanz [flowersanzp2020@gmail.com](mailto:flowersanzp2020@gmail.com)

Our arrangements are raffled at the end of the evening.

Visitors are always very welcome.

---

## STANSTED HALL & ELSENHAM CRICKET CLUB

By David Brown ☎ 831011 ✉ [david1.r.brown@gmail.com](mailto:david1.r.brown@gmail.com)

---

All is not well with English cricket. Results during the winter months for our international teams have been really disappointing both men and women. With a test series against India this coming summer and an 'Ashes' series in November and December let's hope things improve.



We will not get downcast however, village cricket is alive and well. Our club had a very successful quiz, which was won by Gina Thomas and Philippa Fidell with a little help from others! Senior indoor nets have begun at HECC and juniors will begin late February. 'All Stars' cricket will start in May for the 5 to 8 year age group, but if interested you must register with the ECB. We are hoping to raise funds to purchase mowing equipment and mobile nets as these are urgently required. We continue to welcome new members of all ages, please contact me as above.

---

### Henham 10k run is coming - Sunday June 22

The run helps raise much needed funds for Henham village school. It is a great village event in mid-summer, come and join the fun. This will be followed by a bar-b-q, stalls, fun and games in the school grounds. We need:- runners, marshalls, cake bakers and supporters.

Contact Neil Laird ☎ 07496 412178 or June Brennan ☎ 07749 858353 If you can help in any way.

# tdcelectrical

covering all aspects of  
domestic electrical installations

contact us for a free estimate

**07960 941138**

contact@tdcelectrical.com

www.tdcelectrical.com

## **D BONNEY & SONS MANUDEN MOTOR VEHICLE ENGINEERS**

MOT TESTING

ALL MAKES OF VEHICLES SERVICED INCLUDING FOUR WHEEL  
DRIVES

TRW BRAKE CENTRE

DIAGNOSTIC AND FAULT FINDING

WELDING AND CHASSIS REPAIRS

SELECTION OF USED CARS

CALOR GAS STOCKIST

WE HELP YOU THE MOTORIST WITH A CHEAPER LABOUR RATE

GUARANTEED WORKMANSHIP

FREE COLLECTION AND DELIVERY IN LOCAL AREA

**PLEASE RING: MALC, NEIL OR CRAIG**

** 01279 813315 OR  01279 815946**

By the end of February we will have finished any coppicing activity so that going into spring we don't disturb wildlife, particularly nesting birds, with noisy chain saws. The finished coppices may look like an area of destruction so it is worth explaining what is happening and why.

Multi stemmed hazel trees have been coppiced for hundreds of years to provide fire wood and building material. The straight and flexible stems that grow after coppicing were a valuable resource used for a variety of purposes. Where it grows, most villages would have had a managed hazel wood. Today our stems go to the Audley End estate for fencing and to gardeners for bean poles, whilst some of the thicker stems go to Morris dancers!

Coppicing cuts the hazel back almost to ground level leaving a "stool". The new growth from the stool creates a multi stem shrub rather than a single stem tree, creating a particular habitat that we want to maintain. Immediately after coppicing an area and for two or three years after until the hazels have regrown to a height, the floor of the wood is opened up to daylight giving a chance for other plants to flourish. So by coppicing areas in rotation over the years we ensure that this cycle of growth and plant variety continues.



At Aubrey Buxton we cover the coppiced stools with interwoven branches to stop rabbits and deer eating the new hazel shoots as they appear. The remaining cut material is laid as a dead hedge which is excellent cover for small mammals and nesting sites for birds such as wrens. The photo shows how this looks until the new shoots appear. Stools that were coppiced last year already have new growth up to four feet high!

---

## Monday evening running club

Monday evening group runs will recommence on Monday 31<sup>st</sup> March. Runs will start at 18.30 from outside The Cock in Henham. The starting distance will be 5k building up to 10k in time for the Henham 10k on June 22.

All welcome, children must be accompanied by a responsible adult who can keep up! Dogs welcome if kept under control. The runs are mainly off road, signed by yellow fish. The route changes every 2 weeks.

More information from June ☎ 07749 858353.



## SDS Installations Ltd

AERIAL AND SATELLITE SERVICES  
FOREIGN SATELLITE SYSTEMS - CCTV - EXTRA TV POINTS - SKY LINK UPS  
PHONE POINTS - HOME SIGNAL DISTRIBUTION - WALL MOUNTED PLASMA/  
LCD SCREENS - CABLES SUPPLIED AND HIDDEN

Alan Smith  
50 Sunnyside  
Stansted  
Essex CM24 8AX

01279 279012  
07771 881042  
sdsinstallations@hotmail.com  
sdsinstallations.com

## NEW BEGINNINGS COUNSELLING

### A safe environment to explore your thoughts and feelings

*A private practice with parking based in Takeley*

*Represented by Michele Simpson MBACP*

Ever felt sad, overwhelmed, lost or just not quite right? Most people at some point in their lives have felt so overwhelmed that they find it impossible to see a way out of a situation.

My beliefs are that everybody has the resources within themselves, given the right environment, to experience therapeutic change. Give me a call to see how I can help you to improve your life.

Counselling could enable you to have that new beginning

phone: 07956 224954 or 01279 879009

email: [ms@newbeginningscounselling.co.uk](mailto:ms@newbeginningscounselling.co.uk)

[www.newbeginningscounselling.co.uk](http://www.newbeginningscounselling.co.uk)

## JOHN COLEBY

### Experienced Interior and Exterior Decorator

For a friendly, reliable service please telephone

**01279 815510 or 0793 9070818**

for a free estimate

## Taylor Computer Services (Stansted)

On-site Computer Maintenance/Repairs

DON'T BE RESTRICTED TO OFFICE HOURS, I CAN VISIT YOUR HOME OR OFFICE DURING THE DAY, EVENINGS OR WEEKENDS AT A TIME TO SUIT YOU.

Email and Broadband Setup, Data Transfers/Data Recovery, Hardware & Software Installation, Virus & Spyware Removal & Protection, New PC Setup & Training

Call Derrick on 01279 816418 ~ 07926 289749  
Email: [Info@tcsstansted.co.uk](mailto:Info@tcsstansted.co.uk)



One of the main crops of the rich agricultural area covered by The Hundred Parishes is barley, the main ingredient of traditional ales and beer. In the past, much of the barley was malted locally before being taken to a nearby brewery to be combined with water, hops and yeast for fermenting into beer.

Brewing was initially a domestic activity in the home for family consumption, on farms and estates for the landowner's family and workers, and in various institutions such as religious communities for those who lived in and visited them. As the demand for beer grew (safer to drink than 'fresh' water at the time) so did the brewing industry. Public houses had their own brewhouses, commercial brewers worked out of stand-alone breweries, and, later, industrial scale brewery complexes developed.

Evidence of all these different types of breweries is to be found within the Hundred Parishes in the form of place names such as "Brewery Lane" in Stansted, "Brewery House" in Little Hadham, "Little Brewers", a cottage in Matching Green, "Brewery Cottage" in Swards End and "Brewers House" in Dunmow.



There are also surviving examples of the breweries from each of the various phases of the development of the industry.

At Audley End House, the estate's brewhouse survives, although the internal features have been lost. An example of a public house brewery survives as The Old Brewery in Radwinter, which is now a private house. In Hatfield Heath, the former stand-alone brewhouse was converted to a corn mill before becoming commercial offices.

Three examples of brewhouses which were a part of industrial brewery complexes survive in Furneux Pelham, Wethersfield, and Felsted.

*The Hundred Parishes is 450 square miles of northwest Essex, northeast Hertfordshire and southern Cambridgeshire that is largely unspoilt and is richly endowed with many fine examples of agricultural and built heritage. The area has shared a common history which shaped and preserved its distinctive landscape of small and medium-sized farms linked by winding lanes and ancient rights of way to hamlets, villages and then to small market towns. For more information visit [www.hundredparishes.org.uk](http://www.hundredparishes.org.uk).*



**Options Hair Design**  
2 Ambrose Corner, Elsenham  
01279 812665  
[www.optionsalon.co.uk](http://www.optionsalon.co.uk)

At Options Hair Design we work hard to provide the very best of care to our clients.

From the moment you enter our salon our aim is for you to feel like the most confident and beautiful version of yourself.

Our dedicated and talented team of professionals use the very best and innovative, organic products to achieve the look that you want for your hair. We work with you to achieve this as we believe that confidence comes from a hairstyle that you are happy with.

Our team of five stylists each bring with them a wealth of experience, and each display their own creativity whether in colouring, cutting, styling, or finishing.

Our ethos is that the salon experience we provide ensures you leave feeling relaxed, pampered and confident.

**My name is Samantha, I am an Accredited BACP Counsellor.**

How have you been? Are you struggling with everyday life? Perhaps feeling overwhelmed, feeling lost inside, anxious or depressed. Sometimes it can feel overwhelming, painful and confusing to navigate life.

I offer a warm, friendly non judgmental counselling service for adults and young people. Working with a range of issues including trauma, addiction and recovery. Relationships, anxiety, depression, self-worth and identity, disability and chronic health conditions.

My therapeutic orientation is person-centred therapy I will work with you on your journey to a more peaceful mind. You have the tools, I will simply be there with you, and provide a space for you to work things out.

I also offer a mobile service for clients who live locally in the Epping area.

**Samantha Allison**  
**07944 044207**

**bacp** | professional standards authority  
collective mark | accredited register  
Registered Member **381184**  
**MBACP (Accred)**



# HENHAM & DISTRICT GARDEN SOCIETY

*By Moyra Jackson*



For those of you who enjoy your garden, why not come along once a month to our Garden Club? Whether you are an expert who has gardened for years or a beginner with your first garden, you will find something to interest you.

This Club has been running for almost 50 years, originally meeting in Henham. For over 10 years we have met at Elsenham Memorial Hall.

We have an annual 'Question Time' styled meeting on Saturday, March 22 2pm-4pm. Our members collectively have a wealth of experience gardening in this area and are delighted to share their knowledge.

Annual subscription is £20 with an extra charge of £30 to cover transport and admission for outings.

Visitors are welcome to all our meetings and we do occasionally have extra spaces for the outings that non-members can come along to.

So, what is planned for 2025?:

March 4 Outing – Chippenham Hall

April 1 Spring Show

May 6 The Secret Life of a Wood—Roger Hance

June 3 Cornish Treasures, Eden to Heligan – Robin Carsberge

July 1 Outing – Capel Manor

Sep 2 Wild Scotland: The Highlands and Islands - Liz Huxley

Oct 7 Outing – RHS Hyde Hall

Nov 4 AGM

**(No meetings – August and December)**

If you would like more information, contact details for the club are at the back of the magazine.

Happy gardening!



# Essex Autospray

**Your local Collision Repair Centre - Est 1982**

- Free Courtesy Cars
- Free Estimates
- Low Bake Ovens
- Blackhawk Alignment



**Tel: 01279 816296 E: [info@essexautospray.co.uk](mailto:info@essexautospray.co.uk)**

**[www.essexautospray.com](http://www.essexautospray.com)**

*M11 Business Link, Parsonage Lane,*

## **MASKALLS TREE SURGERY**

**Small family business**

**Big expertise  
in trees**

**Call George**

**M: 07982 601 570 | T: 01279 819 127**

**email: [george@maskalls.co.uk](mailto:george@maskalls.co.uk)**

**[www.maskalls.co.uk](http://www.maskalls.co.uk)**



**All types of tree care & hedge cutting undertaken.  
Call for a free estimate.**



# ELSENHAM BOWLS AND SOCIAL CLUB

*By David Thomas*



We are looking forward to the new bowls season and would like to thank all our members who have been involved in the upkeep of the grounds and club house in preparation for the 2025 season. Work to make sure that the green is at its best goes on daily with weekly maintenance on a Wednesday morning. There has also been special Saturday work parties to cut hedges and carry out decorating in the club house. Our thanks to all involved.

With an eye to the new season we would like to remind bowlers to sign up for the North West Essex Bowling Association Wednesday Night League and the Tuesday Afternoon Essex & Herts Seniors League. The signup sheets are available at the club so please pop in and let us know your availability. Also, the Essex County Bowling Association men's competitions portal is open for entries. The deadline for signing up for the 2025 season is Friday 28 February.

Elsenham Bowls & Social Club are pleased to announce that we will be hosting the Darts Academy from Saturday 1 March. The academy is an opportunity for young people from the age of eight upwards to discover the game requirements and practise their skills. The coaching sessions are already fully subscribed with 64 youngsters registered to play with ten more on the waiting list.

Our Elvis Presley tribute evening, in January, was very entertaining for all who attended. The next music night is on Saturday 29 March when Around Midnite will be performing music from the 1960s to the 2000s. Tickets are available now at £7.50 for members and £12.50 for non-members. Ticket availability is limited so please call Trevor on 07445 437437 to secure your ticket for the event.

We had a really good quiz night in January and are looking forward to the next one on Saturday 15 March. Tables of up to eight team members are invited to book with Trevor on 07445 437437. A light supper is included in the price at just £7 per person.

Our increasingly popular Bingo nights are on 8 and 22 March. Eyes down at 7.30 pm. There is also Shortmat bowling on Monday afternoons at 2pm (open to all members), crib on a Tuesday evening and darts on Thursday evenings. The bar is open at these times for members and their visitors as well as on a Friday evening which is our social night.

## **ETC Quiz – 12 April 2025, 7.30 for 8pm at the Bowls Club**

Format: Trevor asks the questions; we are supposed to answer them correctly. Good night out in fab company. We provide you with a ploughman's supper, raffle and there is a licensed bar. eight brains per table, £9 per person. To book in your team, please email [mail@elsenhambowlsclub.co.uk](mailto:mail@elsenhambowlsclub.co.uk) and we will confirm your table.



**GLYNN'S  
CHIMNEY SWEEPS**  
Est. 1995



**VACUUM AND  
BRUSH**  
**NACS MEMBERS  
HETAS APPROVED**

**COMPETITIVELY PRICED**

**01279 424983**

[www.glynnschimneysweeps.com](http://www.glynnschimneysweeps.com)

**JLT ROOFING**  
07974 953162

All roofing works undertaken, including :

- \*Slating
- \*Asphalt
- \*Tiling
- \*Flat Roofing
- \*Leadwork
- \*Fascia and Soffit
- \*Guttering

\*All works fully guaranteed \*

**PROFESSIONAL RELIABLE AFFORDABLE**

Please contact for a free no obligation quote:  
07974953162 info@jltroofing.co.uk

**COOK UPHOLSTERY**

[www.taylorandcookltd.co.uk](http://www.taylorandcookltd.co.uk)

*Don't Replace It ... Re-cover It !*



**Any Item Reupholstered**

Sofas • Armchairs • Headboards • Divans •  
Kitchen Chairs • Ottomans

**Wall Padding**

Create a beautiful feature wall in your lounge or  
bedroom • Large Choice of fabrics and designs

Call Gary on 07787 518022

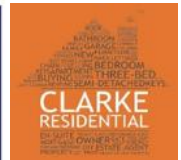
Email: [garycook99@btinternet.com](mailto:garycook99@btinternet.com)

*Text or email a picture for an immediate quote*

***THINKING OF SELLING OR  
RENTING YOUR PROPERTY?***

Please call either of us to find out  
how we can help make your move  
a whole new experience!

**Nicola 07909 548028**  
**Jacqui 07956 513238**



# ELSENHAM TENNIS CLUB

By Petra Studholme ☎814667



Our new season will start in April 2025 with subscriptions unchanged. Various packages are available to suit everyone, go onto our website to find out more or email us [mail@elsenhامتennisclub.co.uk](mailto:mail@elsenhامتennisclub.co.uk). And you can always try before you subscribe. Book a lesson with Steve, come to cardio or if you feel up for it, contact us to attend a club night.

We have two all weather courts, floodlights so you can play before or after work. We are situated right in the heart of the village, on the playing fields. You will get your own key to access the courts, can book online at your convenience and participate in our club events such as club nights, weekend or morning play sessions.

## Essex Small Club League

During our opening match of the winter league, we faced Standon and Puckaridge away which was played on artificial grass which we are not used to and unfortunately we found it very hard to adjust to this. The team consisted of captain Henry, Gavin, Lewis and Paul, everyone put in 100% effort but unfortunately in the end we came short. The final score ending 12-4 to the opposition. Our next match was Harlow away which is never an easy task. The team consisted of myself, Gavin, Jon and Stuart. We all battled hard, but in the end the better team won. Plenty of matches left to enjoy though going into spring.

## Coaching – individual and group sessions

We have individual and group coaching sessions, cardio run by our dedicated and experienced coach Steve Smith. Get in touch with him via email: [stevesmith865@hotmail.com](mailto:stevesmith865@hotmail.com) or call/text 07790 561 817. Please note that Cardio is open to non-members. Cardio is a great way to get or stay fit. Our coach's choice of music is sometimes questionable, but everyone is definitely having fun and is getting a great workout.

## Hire our courts – open to non-members

Hire our courts to play with friends and family - £3 per adult, and 50p for under 18s. You can email us for availability, but please, if possible, give us 24hrs notice as we need to arrange to open the courts.

### Tennis Club Weekly Activities

Tuesday evening – 6.30pm cardio tennis  
(non members welcome)

Tuesday evening – 7.30pm club night

Wednesday morning – 10am causal play

Thursday evening – 6.30pm cardio tennis

(non members welcome)

Thursday evening – 7.30pm team practice  
sessions

Friday morning – 10am casual play

Sunday afternoon – 2pm casual play

# *Ella Bella* BEAUTY

## **Nails**

*Acrylics - Builder Gel - Gel Polish*

## **Facial Treatments**

*Dermaplaning - Microneedling - Galvanic*

*High Frequency - Chemical Peels*

*Hydro Gen - Radio Frequency*

## **Brow & Lash Treatments**

*Brow Lamination- Lash Lift*

*Brow & Lash Tints*

# 20% OFF

Introductory Offer  
Your First Treatment

Limited Time

Hall Close Henham, CM22 6AU

Tel: 07525 475954

Insta: ellabellabeautyuk

## **CARPETS 2 U**

Carpet, laminate, Lvt, vinyl, karndean  
All types of flooring done

*The best for less*

Latex floor levelling, plyboarding preparation  
Old uplifted and disposed of  
Plenty of choice brought to your home

I try to give the best quality for your budget.  
30 years' experience

Steve 07939 739845  
Carpets2u@icloud.com

# THE GLASS HOTEL BY EMILY ST JOHN MANDEL

Reviewed by Marion Giles for Elsenham Book Group



“Vincent is the beautiful bartender at the exclusive Hotel Caiette. When New York financier Jonathan Alkaitis walks into the hotel and hands her his card, it is the beginning of their life together.

That same night, a hooded figure scrawls a note on the windowed wall of the hotel: ‘Why don’t you swallow broken glass.’ Leon Prevant, a shipping executive, sees the note from the hotel bar and is shaken to his core.

When Alkaitis's investment fund is revealed to be a Ponzi scheme, Leon loses his retirement savings in the fallout, but Vincent seemingly walks away unscathed. Until, a decade later, she disappears from the deck of one of Leon's ships.” So says the blurb on the back of the book.

**A beguiling tale about skewed morals, reckless lives and necessary means of escape.** *The Economist*

This was the choice of the book group this month.

The Amazon AI summarises: Customers find the book a joy to read with an interesting plot and clever intertwining of storylines. They praise the writing quality as sublime, beautifully written, and subtly done. The characters are complex and well-drawn, with their respective emotions. Many describe the book as beautiful and dreamy. However, some feel the pacing is not brilliant and underwhelming. There are mixed opinions on the structure, with some finding it clever and well-managed, while others think it's dull and underwhelming.

That summarises our thoughts. The book was generally well-liked due to the word craft. We didn't find many of the characters likeable but did enjoy the way they connected together and how the story unfolded. Some of the plot mechanisms seemed a little contrived so some aspects were disappointing.

New York financier Jonathan Alkaitis is the owner of the book's hotel, on the 'wilderness-adjacent' northernmost tip of Vancouver Island, accessible only by boat. Mixing cocktails in the hotel bar is Vincent. Her best friend drives the hotel boat; her brother, Paul – aspiring composer and recovering addict – sweeps the floors. Alkaitis offers her the chance to be his live-in partner and companion in exchange for “the freedom to stop thinking about money.”

However, plummeting stock prices and collapsing banks is near. As the scheme collapses, Alkaitis will die in prison but one by one, we learn of the fate of the characters; his family, his employees and most importantly, his investors, robbed of their life savings and thrust into destitution. Alkaitis begins to be haunted by those he affected and his existence becomes dreamlike.



Meeting friends and having a catch up is such a lovely way to spend time, and did you know that you can do exactly this at our monthly Farmers Market? We have the most fabulous barista coffee, thirst-quenching, home-produced apple juice, and cold pressed homemade juice shots. Anything you buy from our lovely sellers you can enjoy seated inside or outside. You could perhaps treat yourself to some incredible cakes, wonderful savouries such as quiches, sausage rolls, scotch eggs, cheese toasties, or perhaps purchase some moreish sourdough bread and English cheeses to enjoy at home – we have it all covered!

The Markets are at Elsenham Village Hall (next to the school) from **12.30-2.30pm** as follows:

<b>29<sup>th</sup> MARCH</b>	<b>30<sup>th</sup> AUGUST</b>
<b>26<sup>th</sup> APRIL</b>	<b>27<sup>th</sup> SEPTEMBER</b>
<b>31<sup>st</sup> MAY</b>	<b>25<sup>th</sup> OCTOBER</b>
<b>28<sup>th</sup> JUNE</b>	<b>29<sup>th</sup> NOVEMBER</b>
<b>26<sup>th</sup> JULY</b>	

We have around 12-14 different sellers on a regular basis. They are all local small businesses and any profit from market pitch fees is donated to charity; so, you can shop with a conscience too.

You can find almost everything there to treat yourself to an amazing meal and it's only once a month, so go on, you know you want to, and you definitely deserve it. We look forward to seeing you.

No charge for entry; just enjoy and immerse yourself in all the gorgeous produce.

Best wishes,  
Elsenham Farmers Market Team



## COOKERY CORNER

By Sue Johnson ☎ 812704



A lovely lemony light mousse dessert, topped with crunchy oats and hazelnuts. Can be served in a large glass bowl or individual glasses, if preferred.

### LEMON AND BLUEBERRY MOUSSE WITH A CRUNCHY OAT AND HAZELNUT TOPPING (serves 6-8)

#### Topping:

1oz (25g) butter  
2 tablespoons honey  
4oz (100g) jumbo oats  
2oz (50g) demerara sugar  
2oz (50g) hazelnuts, roughly chopped  
1½ oz (40g) plain flour

#### Mousse:

8oz (200g) full-fat crème fraiche  
8oz (200g) Greek Yoghurt  
3 tablespoons lemon curd  
Juice ½ a lemon  
8oz (200g) fresh blueberries

To make the topping, heat the oven to 180°C/fan 160°C/gas 4. Line a baking tray with baking paper.

Melt the butter and honey in a saucepan. Mix in all the other topping ingredients and spread the mixture out on the baking sheet. Bake for 15-20 minutes, turning halfway through cooking time, until golden brown. Remove from oven and leave to cool completely on the tray. Break up into bite size pieces.

Mix the crème fraiche, yoghurt, lemon curd and lemon juice together in a bowl for the mousse.

To serve, divide the blueberries between 6-8 glasses, if using. Simply, top with the mousse and sprinkle over the topping pieces.

#### **CHEF'S RECOMMENDATIONS:**

*This topping keeps well and can be made up to three days ahead. If you have any left over, it is delicious eaten for breakfast sprinkled over yoghurt. The mousse can be made up to six hours ahead and kept in the fridge.*

# Editorial Information

## Articles

The **last day** for editors to receive articles, advertising and letters, which must contain the author's name and address (which may be withheld), is the 8<sup>th</sup> of each month.

Articles should ideally consist of a half page of A5 or a full page of A5. Articles over these sizes or letters containing more than 500 words may be edited depending on space.

**Copy submitted after the 8<sup>th</sup> may not be accepted but will, if deemed appropriate, be held over to the next month.** We are happy to receive hand written articles which ideally should reach us earlier than the 8<sup>th</sup> to allow for scanning etc.

**Dates for the Diary** must include date, event, venue and time.

**Please submit all articles, adverts, letters and queries to the editorial team at:**  
**[elsenhamsnews@hotmail.co.uk](mailto:elsenhamsnews@hotmail.co.uk)**

## General Notes

Whilst every effort is made to ensure that information is correct, the editorial team cannot be held responsible for any inconvenience caused through errors or omissions.

The views expressed within this magazine are not necessarily the views of the editorial team or Elsenham Community Association (ECA).

The editors and the ECA can accept no responsibility for the goods or services advertised in the magazine. Advertisements are included in good faith. The editors reserve the right to allow replies to letters/articles to be made in the same edition when appropriate.

**The editors' decision is final.**

**Wanted/For Sale items:** individuals may submit short details of items wanted or for sale etc at no charge. These will be included in the next available issue of the magazine subject to space and acceptance by the editors.

## Subscriptions

*Elsenham News* is available by email (on a pdf) at no charge, or through the post at a cost of £13 per annum. Contact **[elsenhamsnews@hotmail.co.uk](mailto:elsenhamsnews@hotmail.co.uk)**

## Advertising

The costs are as follows:

	Single Insertion	Annual Cost (11 issues)
Half Page	£20.00	£190.00
Quarter Page	£10.00	£100.00
Inside Page	£50.00	n/a
Back Page	£75.00	n/a

**Village organisations** attract reduced rates, £5 for ¼ page. Half and full-page adverts attract full rates.

## To place an advertisement:

If you have any queries, please email us. Please send your advert as Word or Publisher via email to:  
**[elsenhamsnews@hotmail.co.uk](mailto:elsenhamsnews@hotmail.co.uk)**

**Advertising Editor: TBA**

## Business Advertising

Cheques should be made payable to "**Elsenham Community Association**".

**Editorial Team:**  
**Gary Williams**  
**Emma Bailey**  
**Marion Giles**  
**Patricia Davis**  
**Anne White**  
**Nyaradzo Chabata**  
**Angie Wenlock**  
**David Newland**

**Previous issues of Elsenham News are available on the ECA Website**

**[www.ElsenhamCommunityAssociation.org.uk](http://www.ElsenhamCommunityAssociation.org.uk)**

## UPCOMING EVENTS

ECA race night 4 April Memorial Hall  
 Tennis Club Quiz 12 April Elsenham Bowls and Social Club  
 Good Friday Village Ramble 18 April

## VILLAGE CONTACTS

Airport Roadside Parking		0800 731 2385
Beavers	1sthenhamandelsenham@gmail.com	
Bowls Club	Therese Clear	07759 158859
Brownies	elsenhambrownies@gmail.com	
Church Office (Old Frank's, High St, Elsenham)	Anna Hicks	814285
County Councillor (Stansted)	Ray Gooding	813103
Cricket Club	David Brown	831011
Cub Scouts	1sthenhamandelsenham@gmail.com	
ECA (Chairman)	Allan Hathaway	813385
ECA (Secretary)	Moyra Jackson	647351
ECA Website	www.ElsenhamCommunityAssociation.org.uk	
Elsenham Eagles	elsenham.action@btinternet.com	
Elsenham Farmers Market	elsenhamfarmersmarket@gmail.com	
Elsenham Surgery	www.elsenhamsurgery.nhs.uk	814730
Elsenham C of E Primary School	Linda Todd Headteacher	813198
Elsenham Church PCC Secretary	David Hill	812397
Elsenham Fete	ElsenhamSummerFete@gmail.com	
Elsenham Rights of Way website	www.e-voice.org.uk/erowos/	
Friends of Elsenham School (FOES)	Louise Judd	foespta@hotmail.com
Henham & District Garden Society	Moyra Jackson	647351
History Society	Mike Rea	evhs12@hotmail.co.uk 813634
Member of Parliament	Kemi Badenoch	0207 219 5214
Memorial Hall Bookings	Cheryl Rae	817834
Neighbourhood Watch Co-ordinator	Frances Lambert	07771 728332
	franceslambertnhw@btinternet.com	
Parish Clerk - Louise Johnson	louise.epc@gmail.com	07456 791727
Elsenham Parish Council Website	www.elsenham-pc.gov.uk	
Police		101
Post Office		812175
Rainbows	elsenhamrainbows@gmail.com	
Scouts	1sthenhamandelsenham@gmail.com	
St Mary's Fabric Fund	Elizabeth Barker	813543
Tennis Club	Petra Studholme	814667
Tots & Toddlers	Dawn Temple	07944 841358
Uttlesford District Councillors (for Elsenham & Henham)	Petrina Lees	07713 074656
Village Hall Bookings	Bianca Donald	07941 880279
Womens Institute Secretary	elsenhamvillagehall@gmail.com	
Youth Football Club (Chairman)	Gill Hathaway	813385
	Ricky Lambourne	info@elsenhamyfc.co.uk

If you would like your village organisation contact to appear regularly in the magazine, please contact one of the editors, see opposite for details.

THERE'S SO MUCH TO DO AT GWS!



**TOPTRACER RANGE**

**ADVENTURE GOLF,  
FOOTGOLF, LESSONS,  
GYM, EVENTS,  
9-HOLES & MORE!**

**NOW OPEN UNTIL MIDNIGHT FRIDAY'S & SATURDAY'S!**



**Golf  
World  
Stansted**

Visit us now: Golf World Stansted, Hall Road, Nr Stansted Airport CM22 6FL  
01279 812 865 [ban@golfworldstansted.co.uk](mailto:ban@golfworldstansted.co.uk)