

Elsenham News

We are moving!

*From next month, we will be
online only at:*



www.elsenhamcommunityassociation.org.uk

*In the future, we will move to a dedicated site and details
will be made available as soon as that is ready.*



elsenhamnews@hotmail.co.uk

June 2025
75p where sold

Elsenham Village Regular Monthly or Quarterly Activities

Parish Council 1st **Monday** of month 7.45pm (excl. Bank Holidays) Memorial Hall
 Natter Night 2nd **Monday** of month 7-9pm Golf World Stansted
 Elsenham EAGLES 4th **Monday** of month 7.30-9pm Bowls and Social Club
 Henham & District Garden Soc. 1st **Tuesday** of month 2 for 2.30pm Memorial Hall
 Community Choir 1st & 3rd **Tuesday** of month 7- 8.30pm Village Hall
 Life Drawing 2nd and 4th **Tuesday** of month 7.30-9.30pm Village Hall
 Village History Society 2nd **Wednesday** of month quarterly 7.45pm Memorial Hall
 Women's Institute 3rd **Thursday** of month 7.45pm Memorial Hall
 Gong Baths 4th **Thursday** of month 7.30pm Memorial Hall
 Church Lunch Club 2nd & 4th **Friday** of month 12.30pm Memorial Hall
 Elsenham Farmers' Market last **Saturday** of month 12.30 - 2.30pm Village Hall

June 2025 diary

Mon 2	Parish Council Meeting	Memorial Hall 7.45pm
Tues 3	Henham & District Garden Soc.	Memorial Hall for 2.15pm
Tues 3 & 17	Elsenham Community Choir	Village Hall 7pm
Thurs 5	District Councillors' Surgery	OSCA Henham 6.30pm
Thurs 5 & 19	Mobile Community Supermarket	Memorial Hall 1-3pm
Sat 7	FOES Summer Festival	School Field 11am-2pm
Mon 9	Natter Night	Golf World Stansted 7-9pm
Tues 10 & 24	Life Drawing	Village Hall 7.30pm
Wed 11	History Society Meeting	Memorial Hall 7.45 for 8pm
Fri 13 & 27	Church Lunch Club	Memorial Hall 12.30pm
Sat 14	EYFC Festival & presentation	Playing Field Noon-11pm
	Day	
Thurs 19	WI	Memorial Hall 7.45pm
Sat 21	Bingo	Bowls & Social Club 7.30 for 8pm
Mon 23	Elsenham Eagles	Bowls & Social Club 7.15pm
Sat 28	Famers' Market	Village Hall 12.30-2.30pm
Sat 28	Classic Car Meet	Old Vicarage, Hall Road 11.30am-3.30pm



Mobile Library ** new day**
Every third Saturday stopping at Glebe End
9.30am to 10am Next visit: 14 June

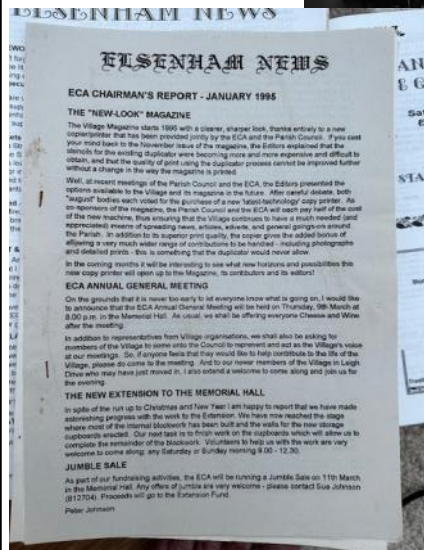
Elsenham Village Regular Weekly Activities

Day	Time	Activity	Location
Monday	9.30-10.30am	Zumba	Memorial Hall
	10.30-11.30am	Health walk	Start at De Mandeville Green
	4-4.30pm	Rascals (3-4yrs)	Memorial Hall (term time)
	4.30-5.30pm	Rascals (5-7yrs)	Memorial Hall (term time)
	5.30-7pm	Rascals (8-12yrs)	Memorial Hall (term time)
	7-7.45pm	Pilates	Elsenham Village Hall
	7.30-8.30pm	Shape to the beat	Memorial Hall (not 1st Monday)
	9.30-11.30am	Village Café Coffee	Memorial Hall
	12.15-1pm	Touchpoint Food Share	Memorial Hall
	4.45-5.45pm	Rainbows	Memorial Hall (term-time)
	4.45-5.45pm	Beavers	Ugley Village Hall (term-time)
	6-7.15pm	Cubs (Wolf Pack)	Ugley Village Hall (term-time)
	6-7.30pm	Brownies	Memorial Hall (term-time)
	7.30-10.30pm	Tennis Club night	Tennis Courts
	8pm	Fitness Yoga/Pilates	Memorial Hall
Wednesday	9.45-11.30	Tots and Toddlers	Memorial Hall
	5.30-7pm	Slimming World	Memorial Hall
	6.30-7.15pm	Women's strength and Mobility	Village Hall
	7-9pm	Scouts	Ugley Village Hall (term-time)
	7.30pm	Aerobics	Elsenham Village Hall
Thursday	9.10am	Teddy Bear Music	Memorial Hall (term-time)
	6-7.15pm	Cubs (Bear Pack)	Ugley Village Hall (term-time)
	6.45-7.45pm	Jump Fit	Elsenham Village Hall
	7.30pm	Gong Baths	Memorial Hall
Friday	10-11am	Little Fishes	Memorial Hall (term-time)
Saturday	8.15am-1pm	Tarte au Citroen	Playing Field
	8.15am-1pm	Youth boys & girls football	Playing Field
	9-10am	Dance Scene	Memorial Hall
	8.45-9.30am	Little Kickers Mighty	Village Hall (term time)
	9.35-10.20am	Little Kickers Junior	Village Hall (term time)

Thank You to all Elsenham News volunteers — past and present!

To our current editorial team, past editorial teams, our current band of distributors and those from past years - a heartfelt thank you!

Here's to a new beginning.



WE PUT THE HOT IN YOUR WATER & THE HEAT IN YOUR HOME

- Central Heating, Boiler replacement
- Boiler servicing & Repairs
- General Plumbing



Call Mark - 07908005478
Email - nelsonplumbingheatingltd@gmail.com

Nelson & Sons Plumbing & Heating LTD



THE NEWS REPORT

From The Editors



Welcome to the last ‘hard’ copy of Elsenham News. Elsenham News has been printed and distributed in its current format since 1995. However, back then it was all produced manually by a gang of volunteers and only had a distribution of 960.

Today we print and distribute over 1,700 copies and even that number does not reach all homes in Elsenham. With the ever increasing development of the village, and need for a wider circulation, the funds available just do not meet the requirements of today’s increased numbers.

The Editor, in consultation with Elsenham Community Association, decided we must go on but in a new format. A format that will meet the needs of the next generation of Elsenham residents. With that decision made, we have turned to the internet, and that is where you will find us in the future.

Originally just titled Elsenham it was first published in the 1970s by the ECA. It usually consisted of two double sided foolscap sheets folded into eight pages subsequently changing to A4 in June 1988.

Without doubt, we would not be able to achieve the number of volunteers and funds needed if we were still doing everything ‘by hand’.

All things must change, and Elsenham News is no different. We do hope though that moving to an online presence means we will attract a younger set of volunteers. Young people interested in modern online design and publishing, people interested in their community and serving it in some small way.

Whatever we decided to, it would not be popular with everyone. We believe that going in the direction we have chosen is the right one for the future. We hope all our readers understand that doing nothing was not an option and providing for the future was the best way forward.

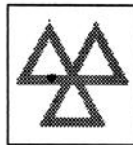
This is not the end of Elsenham News but a new beginning.

Regular features

Parish Council	7	Church Calendar	27
Development Developments	9	Aid for Romania	29
Village History Society	11	St Mary’s Fabric Fund	31
Daisy May’s Farm	13	St Mary’s Church	33
Elsenham WI	15	100 Parishes	35
District Councillors’ Report	17	Omega Running Club	37
Ray’s Reflections	19	Bowls Club	39
EFSS	21	Natural Outlook	41
U3A	23	Book Review	43
Memorial Hall	25	Cookery Corner	45

GARRETT'S GARAGE SERVICES

42 Golds Business Park, Elsenham
Bishop's Stortford, Herts CM22 6JX



- Mechanical Repairs
 - Servicing
 - Tyres
 - Engine Tuning
 - Computer Diagnosis
 - Windscreen Repairs
 - M.O.T.'s - Catalyst & Diesel Tested
 - E.H.D.C. - Authorised Hackney Carriage Testers
 - Batteries
 - Exhausts
- MODERN WELL MAINTAINED WORKSHOP*
- ALL MAKES OF VEHICLE*
- *FREE COLLECTION AND*
*DELIVERY SERVICE**

TEL: 01279 647777 FAX 01279 817622

JOHN COLEBY

Experienced Interior and Exterior Decorator

For a friendly, reliable service please telephone
01279 815510 or 0793 9070818
for a free estimate



Cultivated Turf Supplies

**ROTAVATING
NEW LAWNS LAID
ALL GARDEN WORK
UNDERTAKEN
CALL FOR FREE QUOTATION**

 **01279 718555**

 **07930 188920**

ANNUAL ELSENHAM PARISH COUNCIL MEETING 12 MAY

By Louise Johnson, Clerk.

✉ louise.epc@gmail.com ☎ 07456 791727



The first item on the agenda at the Annual Parish Council meeting must be to elect a chair for the coming year.

Cllr. Graham Mott was unanimously elected as Chair: this is Cllr. Mott's seventh consecutive year. Cllr. Bob Burlton was elected Vice- Chair for the second year. Councillors and Co-opted members were elected to the eleven Committees, two Working Groups and ten Appointments of Representatives to Outside Bodies. The parish council's finances have been audited by the internal auditor.

The Chair and the Parish Clerk signed the Annual Return and the Annual Governance for 2024/2025.

These are now sent off for the external auditor to approve. Copies of all these reports can be seen on the Parish Council website.

Bloor Homes are to give the Parish Council a new flowerbox. The Flower committee are thinking of placing it on Henham Road, near the new 30mph sign.

Some of the Section 106 money given by David Wilson Homes for the maintenance of the Isabel play area, is to go to improving the area opposite. The project is for a Community Garden with an area of natural play for young children. The project will be run by volunteers and be overseen by the EAGLES.

A resident asked what the parish council could do to push our local authority into doing something about the road closures in and around the village.

Although the Parish Council agreed with the sentiments, they are limited to what they can do. The Parish Council have raised it with Elsenham's County Councillor Ray Gooding and a letter has been sent to Essex Highways reporting residents' frustration.

The next Parish Council meeting is to be held on 2 June 2025 in the Memorial Hall at 7.45pm.

The new home of Elsenham News. Simply put your mobile phone camera over this QR code and follow the link.



Essex Autospray

Your local Collision Repair Centre - Est 1982

- Free Courtesy Cars
- Free Estimates
- Low Bake Ovens
- Blackhawk Alignment



Tel: 01279 816296 E: info@essexautospray.co.uk

www.essexautospray.com

M11 Business Link, Parsonage Lane,

CARPETS 2 U

Carpet, laminate, Lvt, vinyl, karndean
All types of flooring done

The best for less

Latex floor levelling, plyboarding preparation
Old uplifted and disposed of
Plenty of choice brought to your home

I try to give the best quality for your budget.
30 years' experience

Steve 07939 739845
Carpets2u@icloud.com

DEVELOPMENT DEVELOPMENTS

By *Graham Mott* ☎ 812516 ✉ motts@grahammott.plus.com



The Government wants to build lots more new houses, and build them quickly. What slows things down is that, effectively, developers have control of the time-table. Gladman made an application as long ago as March 2024 to put 240 new homes on the site to the north of Bedwell Road, bounded on one side by the continuous noise of the motorway and on the other side by the intermittent noise of the railway. Various objections were made, many of them involving, predictably enough, noise. Gladman thought about it and came back with a reply to the objections, and it was expected that the application would be considered by Uttlesford District Council's Planning Committee in October 2024. Then Gladman weren't quite ready, and it was put back a month. And another month. And - you get the idea. Eventually, yes, they're all set. The application will be before the Planning Committee meeting on 7 May. But then, with a very few days to go, it's hold hard! Forget all that. There are some more objections which they want to answer.

What is conspicuous is that it's the developers who decide when they're ready. They have nothing like a deadline. They can consult their consultants, and hold their meetings, and revise their plans for as long as they like. Of course, local residents don't mind - the developers can put it off for ever, as far as they're concerned. But if Government is concerned with delays in the planning system, they should be looking at the ways in which developers use it.

To give another example, in December 2024, plans were submitted for 40 new homes in the field at the end of Robin Hood Road adjacent to the railway, with access from the turning head at the end of the road. Various objections were made, and revised plans were lodged on 1 May. The revisions are considerable, and yet no notification was given, and a mere fortnight was allowed for responses.

It cannot be said that improvements have been made. Amongst the criticisms of the previous version was the quality of the equipment proposed in the Local Area of Play ('LAP'). The developers have answered by doing away with it, in favour of three small areas termed 'Natural Play', each comprising two or three logs, four or so boulders, a mound ('created from subsoil on site and subject to availability') and 'sensory planting'. A central green area is claimed, but this is so minuscule that it is difficult to locate on the plan. The affordable homes are still very obviously clustered together alongside the railway, despite UDC policy which expects them to be dispersed, and the visitor parking is not distributed around the site either. The schedule of plans shows that the original *Design & Access Statement* is to be regarded as current - and yet that cannot be correct, since it includes several versions of the previous site layout, which has been radically amended.

These are just two examples of delays caused by developers



JLT ROOFING

07974 953162

All roofing works undertaken, including :

- *Slatting
- *Asphalt
- *Tiling
- *Flat Roofing
- *Leadwork
- *Fascia and Soffit
- *Guttering

*All works fully guaranteed *

PROFESSIONAL RELIABLE AFFORDABLE

Please contact for a free no obligation quote:

07974953162 info@jltroofing.co.uk

Luxury Toilet Hire (UK) Ltd



Whether you are arranging a wedding, private party or corporate event, let Luxury Toilet Hire (UK) Ltd provide you with the perfect toilet facility to make your occasion a memorable success.

Cesspit emptying also undertaken.

Tel: 01371 873003 or 01279 504638
Email: info@luxurytoilethire.co.uk
Web: www.luxurytoilethireltd.co.uk




We also hire out mobile fridge and freezer units.

Please contact us for a quote:
Tel: 01371 873003 or 01279 504638
Email: info@chillermatic.com Web: www.chillermatic.com



CAMWOOD

HOME IMPROVEMENTS

Kitchens • Bathrooms
Electrics • Conversions

Fully Qualified Experienced Tradesmen
All other aspects of building

Get in touch today for a free estimate

Office: 01279 814296 Mobile: 07714 300920
Email: camwoodhome@outlook.com
www.camwoodhome.co.uk




ELSENHAM VILLAGE HISTORY SOCIETY

By Mike Rea, Secretary ☎ 813634 ✉ evhs12@hotmail.co.uk

🌐 www.elsenham-history.co.uk



I, and no doubt many others are saddened to read that this will be the last printed copy of the magazine. The village magazine has been around for fifty years and originally consisted of a single foolscap sheet produced on a Roneo machine. I wonder how many people still remember those? It was published somewhat irregularly at first covering items of interest to the village. For example, the Parish Council advised that land acquisition was to go ahead to provide a pavement outside the Crown and another proposal for a pavement outside the Station Garage (now Hunters Court) and along the length of New Road was put forward for consideration by the Highways Department.

It wasn't until 1979 that the decision was made by the ECA to make it a regular monthly publication free of charge to every household in Elsenham. In those days Stansted Airport was much in the news and in early 1980 the magazine reported that the Government was producing proposals to increase capacity from the then 300,000 passengers a year to 15 million and more. A number of public meetings were held outlining the expected changes to the surrounding villages. The writer noted that the effects could only be imagined. Today, as we look about us, we don't have to imagine, there were almost 30 million passengers through the airport last year, its busiest year ever!

Over the succeeding years the magazine has covered all the major events in the village including the building of the new Village Hall next to the school and the Memorial Hall. Some of the less major events included the running of a highly successful mini-marathon that raised £3,080 for charity; PC Dix moving into the new Police house on Station Road to take up rural beat duties in Elsenham and the surrounding Villages and a Christmas party for 100 children where they enjoyed a magician, Punch & Judy and carol singing.

Finally, my personal favourite, the "Inefficiency Award" presented to British Railways (Eastern Region) (BR(ER)) by local commuters in February 1979 celebrating the first right time arrival of the 08:41 from Cambridge that year. I was even more amused by the refusal of BR(ER) to accept the award as, according to their records, the train was in fact, two minutes late arriving at Liverpool Street. Who said public institutions don't have a sense of humour?

Thanks for the above must go to all the editors past and present of the newsletter and magazine and their band of willing volunteers and contributors. We wish the current incumbents every success for the future .

Looking ahead, we look forward to welcoming you to our meeting on Wednesday 11 June at 8pm in the Memorial Hall. The speaker for the evening will be Mark Ratcliff, who will tell the fascinating story of Camp 116 near Hatfield Heath. Why was it built, who for, and who lived there? Come along on the night and all will be revealed. Visitors are always welcome at our meetings for a very modest £2 but even better, membership still costs just five pounds for a full years meetings.

June 2025



Options Hair Design
2 Ambrose Corner, Elsenham
01279 812665
www.optionssalon.co.uk

At Options Hair Design we work hard to provide the very best of care to our clients.

From the moment you enter our salon our aim is for you to feel like the most confident and beautiful version of yourself.

Our dedicated and talented team of professionals use the very best and innovative, organic products to achieve the look that you want for your hair. We work with you to achieve this as we believe that confidence comes from a hairstyle that you are happy with.

Our team of five stylists each bring with them a wealth of experience, and each display their own creativity whether in colouring, cutting, styling, or finishing.

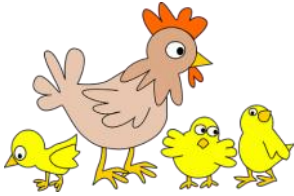
Our ethos is that the salon experience we provide ensures you leave feeling relaxed, pampered and confident.

YOUNG'S

WINDOW CLEANING SERVICE

**We specialise in residential properties offering a quality
and regular service for exterior and interior cleans
Serving the Elsenham community for the last 10 years**

**Call or text Malcolm for a FREE quote
07817 481901**



Daisy May's Farm

Hall Road, Elsenham, CM22 6DN

Even with the changeable weather, our babies just keep on coming in all sorts of shapes and sizes, but what they all have in common is that they are really cute!! There is SO much to do:

- Hold the ducklings & chicks
- Bottle feed the orphans
- Meet the farm animals
- Cuddle the babies
- Arts & crafts
- Enjoy our play area
- Ride the train (£2 per person)
- Zip and Friends Story Trail
- Woodland Trail
- Ollie's Food Hut

It's only £6 per person and under 1's are free and we are open until 5pm. Please note there are NO credit card facilities, and no booking is necessary. Please make sure you **BRING YOUR WELLIES!!**

We are a working farm and are run mainly by volunteers as a not for profit organisation. The money we raise by you visiting us makes sure our animals stay well fed and watered. So, in essence, this is a win win situation, you have a lovely time seeing our animals and as a direct result, we can afford to ensure they are all well looked after. So, thank you!

If you have a child's birthday coming up, why not have your party with us at the farm? Want a different kind of holiday? Then come and camp on the farm and enjoy the great outdoors and our animals at the same time! Either book direct on our website – daisymaysfarm.org – sooner than later!

As ever, thanks so much for your continued support.

We **always** need help in so many ways, particularly when there is **so** much to do. So if you have a little time to spare, **please** get in touch, we would **love** to hear from you. Please contact ☎ 07747 787973 or take a look at our website 8 www.daisymaysfarm.org to find out more. Thank you so much.



Elsenham Tots & Toddlers Group



We meet in the Memorial Hall on Elsenham Playing Field

Wednesdays at 9.45am to 11.30am (Term Time only)

All are welcome - Mums to be, babies & toddlers up to 5years - with mum or dad, grandparent or carer

MEET OTHERS

We have a very safe and friendly environment in which to play and have fun

Drop in for a chat and a coffee - Your first week is free

Then it's £3 per adult & first child,

50p per additional child over 12 months

Please message Dawn on 07944 841358 for more information

Lots of Toys



Elsenham Tots and Toddler Group

Have Fun

MAKE FRIENDS

Ella Bella BEAUTY

Nails

Acrylics - Builder Gel - Gel Polish

Facial Treatments

Dermaplaning - Microneedling - Galvanic

High Frequency - Chemical Peels

Hydro Gen - Radio Frequency

Brow & Lash Treatments

Brow Lamination- Lash Lift

Brow & Lash Tints

20% OFF

**Introductory Offer
Your First Treatment**

Limited Time

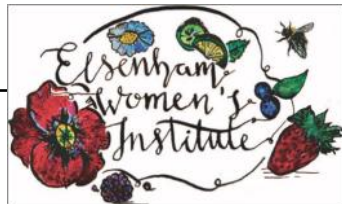
Hall Close Henham, CM22 6AU

Tel: 07525 475954

Insta: ellabellabeautyuk

ELSENHAM WOMEN'S INSTITUTE

By Moyra Jackson ☎ 647351



I am writing this on what started as a very blustery, dull and wet Early May Bank Holiday having watched the parade in London to celebrate VE DAY 80. Some wonderful sights especially the Red Arrows Fly Past, accompanying some amazing other aircraft. As I look out of my window, I can also see the fabulous Post Box Topper that our multi- talented secretary, Gill Hathaway made especially for VE DAY. I hope you all had a chance to see the wonderful dancing couple featured on it – I couldn't help smiling every time I walked past it!

We had a meeting with Fraud Prevention Officer Tammy Blest from Essex Police, Uttlesford District who told us how to avoid being scammed. She told us true stories of scammers and fraudsters and gave us all a pack including bells to attach to purses to make life just a little bit harder for pickpockets.

Our next meeting is well timed. We are having Paul Barwick coming to tell us all about "The White Mouse – Nancy Wake, A Truly Remarkable Spy". Nancy was a spy during WWII, and this really is a meeting not to miss. The competition this month is War Memorabilia.



I am sure you have read about the upcoming changes to this magazine. This edition of the Elsenham News will be the last edition in print, delivered to your door. Next month it will be available in glorious colour online. If any of our members are unable to access this, please let me know, as I am happy to print off some copies for you to share at our meetings. Fear not, dear readers – no matter if the magazine is in print or online, the WI article will still be there every month!

I would also like to thank everyone involved with the Elsenham News over the many years – those who write the articles, advertisers, proofreaders, the editorial teams and especially those people who delivered it to our doors. All of them volunteers, all doing a wonderful job. I look forward to reading it online.

Coming along to Elsenham WI is a really good way to make friends especially if you are new to the area. The 'Jam and Jerusalem' traditions of our formation in 1921 have allowed us to grow and develop into the modern and forward-looking WI that we are today. We are happy to dispel any of the stereotypes associated with the WI – but our cakes *are* delicious! Why not come along (or come back) – visitors and new members are always welcome, and you can join at any time throughout the year.

Details of our programme, events and activities can be found on Facebook, Twitter and Instagram – search for Elsenham WI. Visitors are welcome to our monthly meetings so please come along. We meet at 7.45pm on the third Thursday in the month in the Memorial Hall.

Elsenham WI – There's a lot going on!

COOK UPHOLSTERY

www.taylorandcookltd.co.uk

Don't Replace It ... Re-cover It !



Any Item Reupholstered

Sofas • Armchairs • Headboards • Divans •
Kitchen Chairs • Ottomans

Wall Padding

Create a beautiful feature wall in your lounge or
bedroom • Large Choice of fabrics and designs

Call Gary on 07787 518022

Email: garycook99@btinternet.com

Text or email a picture for an immediate quote



New Classes Every Saturday morning Elsenham Memorial Hall

Baby Ballet - 9:00-9:30

(Ages 3-5)

Junior Ballet - 9:30-10:00

(Ages 6-8)

Musical Theatre/ Street - 10:00-10:45

(Ages 5+)



For more information and to
book a free trial please contact:

Come along to our new fun
classes and get involved in our
well established dance school

Lorraine Hughes - 0779 743893

lorraine@dancescene.me.uk



The Hair Loss Clinic

North Hall Road, Ugley

07957 166436

www.hairlosslaserclinic.co.uk

The Hair Loss Clinic is a company set up to provide information, advice, support and above all solutions for people experiencing hair loss. Not only do we provide realistic and workable solutions to those suffering from hair loss but we are also specialists in after and on-going care for hair loss, giving you the very best support. We can help you through your journey from hair loss through to aftercare if your hair grows back. We provide a personalised service and will recommend the course of treatment or other solutions most appropriate to you.

We provide information, support and advice about your hair loss and identify the factors you will need to consider when choosing which solution is suitable for you.

We provide guidance on cutting and styling of your wig or integration piece and advice on what to do when your hair starts growing back.

Monthly Trichologist clinics are held with Eva Proudman, MIT IAT. Eva is widely known both in the UK and Internationally for her work with hair loss. She has appeared on TV many times and supports many major hair companies with her research into hair loss. All consultations are private and last for between 45 minutes and 1 hour; during this time all relevant areas of health, diet, lifestyle, family history, hair care regime will be discussed along with an in depth examination, including the use of a specialist scalp camera to arrive at a diagnosis and treatment plan.

Whatever the cause of your hair loss or the extent of the hair loss, we are here to help you.

DISTRICT COUNCILLORS' REPORT

✉ CLlrDonald@uttlesford.gov.uk

☎ 07941 880279

✉ CLlrlees@uttlesford.gov.uk

☎ 07713 074656



As we write, the sun is shining. The UK's weather is notoriously changeable. One moment it could be sunny, and the next it might rain. This variability gives people plenty to talk about. If you are able, we would recommend taking some time to walk around this beautiful village that we are lucky enough to live in.

Environmentally, we have secured two grants from the government as part of our goal of making UDC net zero. We successfully bid for £3.8 million of government funding to make council homes more energy efficient and reduce tenants' bills. We are upgrading 276 (10%) of the most energy-inefficient homes in the council's housing stock with additional insulation, solar panels and air-source heat pumps.

Alongside this is a £636,000 government grant towards decarbonising UDC's offices in Saffron Walden. Having a carbon-efficient building is a valuable asset. This money from the government can only be used for the council building. It is part of our Climate Change and Biodiversity Action Plan. Whatever the New Local Government Organisation entails, a listed building, well looked after, is an asset. The building is full and busy, not empty. All space not needed for council use is being rented out to tenants, earning an income of £328k per year.

May we recommend a visit to Saffron Walden Museum? In July, the Museum will be 190 years old! (Not as old as its Egyptian mummy!) To celebrate, the museum has launched a "WONDERS" exhibition (chosen by public vote.) With collections of all sorts from around the world, there is little they don't have.

We were saddened to hear of the death of former District Councillor Garry Le Count, who served the ward of Henham and Elsenham for six years. We send our condolences to his family.

We will be holding our usual monthly surgery at the OSCA Hall in Henham on Thursday 5 June at 6:30pm. We look forward to meeting residents without making any prior appointment. As ever, of course, we would be very happy to hear from any residents by email or phone should there be anything they think we can help with or to answer any questions you may have about our report or the District Council.

The new home of Elsenham News. Simply put your mobile phone camera over this QR code and follow the link.





SDS Installations Ltd

AERIAL AND SATELLITE SERVICES
FOREIGN SATELLITE SYSTEMS - CCTV - EXTRA TV POINTS - SKY LINK UPS
PHONE POINTS - HOME SIGNAL DISTRIBUTION - WALL MOUNTED PLASMA/
LCD SCREENS - CABLES SUPPLIED AND HIDDEN

Alan Smith
50 Sunnyside
Stansted
Essex CM24 8AX

01279 279012
07771 881042
sdsinstallations@hotmail.com
sdsinstallations.com

Taylor Computer Services (Stansted)

On-site Computer Maintenance/Repairs

DON'T BE RESTRICTED TO OFFICE HOURS, I CAN VISIT YOUR HOME OR OFFICE
DURING THE DAY, EVENINGS OR WEEKENDS AT A TIME TO SUIT YOU.

Email and Broadband Setup, Data Transfers/Data Recovery, Hardware & Software
Installation, Virus & Spyware Removal & Protection, New PC Setup & Training

Call Derrick on 01279 816418 ~ 07926 289749
Email: Info@tcsstansted.co.uk

MASKALLS TREE SURGERY

Small family business

Big expertise
in trees

Call George

M: 07982 601 570 | T: 01279 819 127

email: george@maskalls.co.uk

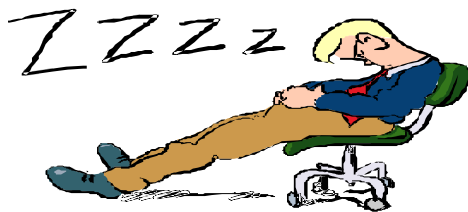
www.maskalls.co.uk



All types of tree care & hedge cutting undertaken.
Call for a free estimate.



Ray's Reflections
Ray's Reflections



Then and Now

I was among the small band of volunteers who in the Summer of 1970 produced the first printed Village Magazine. It should be noted that at that time the population was a little over 1,100. Over the years the Village News, has changed its appearance several times. Going from the first hand-cranked Roneo sheet to the very professional A5 sized award-winning tome we have today.

I wonder just how many remember fighting that Roneo, the black ink-covered, typed skins, the late nights producing copy, followed by the obligatory Chinese take-away. The first major change occurred in 1972 moving from a news sheet to a true magazine with coloured back and front cover. There followed a number of experimental printings and delivery styles, trying delivery on one occasion to a bi-monthly basis. As the population of Elsenham increased so did the cost of production. Despite financial support from many including the Parish Council in 2025, with a current population exceeding 3,000 you find yourself reading the last printed version of Elsenham News.

Elsewhere, you will read that the magazine will continue, albeit online. So, you'll still be able to read the Village News and see all that is planned for the future. I extend my sincere thanks to all who have assisted in production over the last 50 years. I am proud to have been a producer, deliverer, and contributor for over half a century.

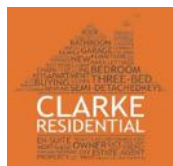
Ray
Franklin

**THINKING OF SELLING OR
RENTING YOUR PROPERTY?**

Please call either of us to find out
how we can help make your move
a whole new experience!

Nicola 07909 548028

Jacqui 07956 513238



**hpc (State Registered)
Chiropodist**

CH09088

Home Visiting Practice

Mrs. Julie Golden

Est. 1994

01279 873492

**A professional service at a
competitive rate**

**GLYNN'S
CHIMNEY SWEEPS**

Est. 1995



**VACUUM AND
BRUSH**

**NACS MEMBERS
HETAS APPROVED**

COMPETITIVELY PRICED

01279 424983

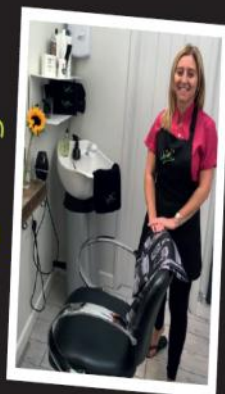
www.glynnschimneysweeps.com

Clare's Gents hairstylist
@ Rickling Green

★ Appointments from
7am Mon-Sat

★ FREE easy parking

★ Fully qualified
& insured



Call: 01799 542424
Text: 07791 058406

**City &
Guilds
Qualified**



ELSENHAM FLOWER SHOW SOCIETY

✉ suewaite2003@yahoo.co.uk or

✉ lynda.jolly@btinternet.com



The Plant Sale was a successful day; our volunteers and helpers worked hard alongside the committee with all the wonderful plants which were grown and sold on the day. So, a big "Thank You" to all. All the money taken will go towards the cost of the Flower Show in August.

Those of you who bought flower or vegetable plants at the sale can think about entering them in the various categories at the Flower Show in August. If you require an entry form, it was in the April magazine, but they are also available at the Post Office and the Station

Just a reminder that there will not be an Open Garden Day this year as we hold that every two years.

Again, "Thank You" to all the people who came to the Plant Sale and to those who volunteered by donating various plants and helping on the day.

NEWPORT & DISTRICT FLOWER CLUB

Contact Patricia Sanz ✉ flowersanzp2020@gmail.com

April saw the start of our 2025-26 Programme with our AGM. We said goodbye to two of our longstanding committee members but welcomed new committee members and club members alike. The meeting was well attended and after the official business we enjoyed a fun quiz evening with light refreshments.

In May, demonstrator Elizabeth Robertson returned with her title 'Life's Rich Colours' and on 18 June we are looking forward to seeing Doreen Robinson and her displays with a 'Gone Fishing' theme.

We would love to see you there!

Our meetings are a 7pm for 7.30pm start every third Wednesday of the month at Ugley Village Hall CM22 6HR

GARDEN HINT *By Sue Johnson*

Repeat-sow salads: Cut-and-come-again salads, pea shoots and microgreens are costly to buy but easy to grow. Ensure a steady supply by making a new sowing every few weeks.

CLEAR OVENS

Oven Cleaning Specialists

01279 89 89 96

we accept cards!

Make your oven look showroom fresh with a professional clean from **Clear Ovens**. Our fully insured expert technicians will make it shine like new.



Covering Sawbridgeworth, Harlow Epping, Great Dunmow, Braintree, Stansted, Bishop's Stortford and surrounding areas.

01279 89 89 96 or visit us online at www.clearovens.co.uk

The difference is clear

DANIEL ROBINSON & SONS

Independent Family Funeral Directors & Monumental Masons

Est 1892

Always here when you need us...

- Arrangements in the comfort of your own home, if preferred
- Private Chapel of Rest
- Pre-paid funeral planning services
- Traditional & contemporary funerals to suit your wishes



79/81 South Street
BISHOP'S STORTFORD
01279 655477

www.drobinson.co.uk

U3A STANSTED

Registered Charity Number 1148073

✉ stanstedu3a@gmail.com

By Julia Cook



The u3a offers several different types of exercise activities for fun and to learn how to keep body and mind as happy as possible. Pilates, for example, takes place in St John's Hall every Thursday. The founder of Pilates asserted that it could lead to coordination of mind, body and spirit. Although this is quite a claim, following the guided breathing patterns while becoming more aware of the part of the body you are moving does bring about a decidedly good feeling. You are not expected to push yourself beyond what you can comfortably do and there is no competition; the class is arranged in the hall in a wide semicircle facing the instructor, so you can concentrate on yourself and not worry about those in front or behind. Indeed, as with all the activities at u3a, the time spent together brings about a touch of fellow feeling.

There was plenty of fellow feeling in the Bus Pass group when they recently journeyed to the Warner Textile Archive in Braintree. The absorbing museum, housing textiles used by royalty both for coronations and in Buckingham Palace, was a fascinating experience. A walk in Bocking Park and a visit to the market completed a rewarding day out in good company. Clever minds are clearly at work finding such stimulating places to visit on bus routes.

The same is true for the Gardening Group. They sought the special kind of beauty created by the plants found at Ulting Wick near Maldon, the home of Mr and Mrs Burrough. This proved to be delightful. Blessed with a beautiful spring day, when everything was bursting into life with joyful exuberance, the group relished the chance to explore 8 acres of borders, kitchen garden, pond and wildflower meadows, storing up lovely inward images to replay at will.

THE ARTS SOCIETY BISHOP'S STORTFORD

✉ info@tasbs.org.uk

www.tasbs.org.uk Membership Secretary Sue Chapman ☎ 01279 508542



Our next meeting is on the 10 June at South Mill Arts with coffee from 10 a.m. followed at 10.40 a.m. by our lecture by Gavin Plumley on "John Singer Sargent: The Private Radical".

Whether drawing duchesses or portraying princes, John Singer Sargent (1856 – 1925) was high society's leading portraitist. With a consummate technique, he mirrored his subjects' wealth. Yet beneath the veneer of works such as *Madame X*, *The Daughters of Edward Darley Boit* and *Lady Agnew* lurks a much rawer world. He certainly scandalised Parisian society with his frank depictions of human sexuality, yet he was even more modern than they might have feared. This talk charts the artist's life and his prolific output, showing that Sargent was always on the cusp of seismic change.

Visitors are very welcome for which we invite a donation of £7 - cash or cheque please. If coming by car, please also register your car number at SMA reception.

Are you ready?
Henham 10k and 3k run

22nd June 2025

Enter online at

henham10k.co.uk

As well as runners we need marshals, if you feel able to help
with the run, please message June on 07749858353

This event is sponsored by

Tilt fitness studio

Please note

There will be road closures in Henham
from School Lane to Hall Road on

22nd June 2025

from 9.25am – 9.45am

This is to allow a safe start for the races.

We apologise in advance for the inconvenience


S. PERRY

CHAPEL END NURSERY

HANGING BASKET & TUB PLANTS
VEGETABLE PLANTS HERBS & BEDDING
TREES, ROSES, SHRUBS, FRUIT BUSHES, HEDGING

DECORATIVE BARK TERRACOTTA & GLAZED PLANTERS & POTS	HORTICULTURAL GRIT COLOURED GRAVELS PEBBLES COBBLES	WATER SOFTENER SALT 25kg £14 each £62.50 for 5
--	--	---

WE ARE HERE



COUNTRY VALUE SEEDS
Most 99p per PACKET
Mr Fothergills Seeds
Buy 5 Packs get Cheapest Free

OPEN 9 am to 5 pm
MONDAY TO SATURDAY (CLOSED SUNDAYS)
MOLEHILL GREEN ROAD
BROXTED DUNMOW ESSEX CM6 2BW
01279 850771

VEGETABLE PLANTS
BASKET & TUB PLANTS
ALPINES
HERBACEOUS
HERBS
ROSES
SHRUBS
POND PLANTS
AQUATIC COMPOST
COMPOST
WILD BIRD FOOD
SUNDRIES

Elsenham Memorial Hall

By Margaret Shaw, ECA Treasurer



Visitors to the Memorial Hall will have noticed significant upgrades during 2025.

The Memorial Hall, on Elsenham Playing Field, is owned and managed by Elsenham Community Association (ECA). Thanks to a grant from the UK Shared Prosperity Fund, we have installed infra-red heating that warm people and objects directly, rather than the air, and consume far less energy than the old storage heaters they replaced.



The same grant enabled us to upgrade to LED lighting. LEDs consume up to 80–90% less energy than traditional incandescent or halogen bulbs, leading to much lower electricity bills. They also have a much longer lifespan, typically 25,000–50,000 hours, require little maintenance, contain no toxic materials and are fully recyclable.

With help from the Uttlesford Zero Carbon Communities Fund, we have also installed 29 solar PV panels (with pigeon-proofing) and a battery storage system. Modern solar PV systems require minimal maintenance and provide a long-term, hassle-free energy solution.

By generating electricity on-site, the solar panels are already dramatically lowering our energy costs. We store unused solar energy for use in the evening in the Hall and by the tennis courts. Once we have the paperwork in place, excess electricity can be sold back to the national grid, providing the ECA a source of income under the UK's Smart Export Guarantee scheme. **In fact, during the first week of May we used just one-tenth of the electricity we consumed during the same period in 2024!**

We received a grant from our District Councillors' Ward Initiative Fund to install a fully automated smoke alarm system. Thank you, Bianca and Petrina.

In partnership with Gigaclear, we now have super-fast Wi-Fi available throughout the Memorial Hall. The password is on display. The more it is used the happier Gigaclear will be.

We installed an overhead projector and screen, compatible with the Wi-Fi system, making it easier than ever for our users to show presentations.

A special thank-you must go to our outgoing Chairman, Allan Hathaway, for his hard work and dedication in over-seeing the successful delivery of these improvements; redecorating the hall and working with the architect and builders to refurbish the three toilets over the past few years.

ST MARY'S CHURCH ELSENHAM

Office@heuchurch.co.uk

Thought For The Month by *Louis Wilson*

Although it's nearly 40 years ago, I clearly remember the evening of Friday 6 March 1987. I was still a schoolboy but two or three of us were at the annual dinner of the old boys of the school in the hope (presumably) that we would persuade others to join the Association.

And therefore, I was at the dinner when news came through about the catastrophe that had taken place just outside the Belgian port of Zeebrugge. It was a calm, cold night when the Herald of Free Enterprise car ferry set sail for Dover without closing the bow doors. Within minutes water had flooded the ship and in just 90 seconds it capsized. There was no time to send an SOS signal, lower the lifeboats or deploy life jackets. 193 people lost their lives.

Larry O'Brien, an Irish long-distance lorry driver was aboard the ship that night. Nearly 40 years on, I heard his story on the radio the other day. Married with one child, he was on his way back to Ireland when the disaster struck. Despite not being able to swim, he managed to climb out of the water, smash a porthole and clamber out onto the hull. There he found a rope which he lowered back down through the porthole and was able to pull more than 30 people to safety.

On a night of unspeakable terrors, panic and loss, it was behaviour of conspicuous courage and selflessness. For his actions that night, Larry O'Brien received awards in Britain, Belgium and France. But at least it did not cost him his life. He still lives in Ireland today having left lorry driving for a career in politics.

In an old churchyard in the City of London, there's a wall called the Memorial to Heroic Self-sacrifice. On it are mounted dozens of tablets which commemorate various ordinary people who gave their lives to save others. People like: Edmund Emery of King's Road Chelsea who leapt from a Thames steamboat to rescue a child and was drowned 31 July 1874.

Or Henry James Bristow aged eight – at Walthamstow on December 30, 1890 – saved his little sister's life by tearing off her flaming clothes but caught fire himself and died of burns and shock.

Or Solomon Galaman aged 11 - died of injuries on 6 September 1901 after saving his little brother from being run over in Commercial Street. "Mother I saved him but I could not save myself."

Extraordinary acts of heroism all of them. We rightly admire their excellence. But someone has written: All heroes are shadows of Christ. In John 10:11, Jesus said "I am the good shepherd. The good shepherd lays down his life for the sheep."

The Bible says we all like sheep - sheep that have gone astray. We need a shepherd. And on a cross outside Jerusalem, Jesus proved himself to be the good shepherd. He willingly laid down his life in the place of his sheep. The Lord had laid on him the iniquity of us all.

With best wishes,

Louis

CHURCH EVENTS IN OUR VILLAGES JUNE 2025

Church Services

Sunday 1st June

- 10:30 All Age Service,
Elsenham Village Hall
18:00 Sunday@6, Henham Church

Sunday 8th June

- 08:45 Prayer Book Morning Prayer
Elsenham Church
10:00 Morning Service,
Ugley Church
10:30 Morning Praise,
Henham Church
18:00 Sunday@6, Henham Church

Sunday 15th June

- 08:45 Prayer Book Morning Prayer,
Elsenham Church
10:00 Holy Communion, Ugley Church
10:30 Morning Praise,
Elsenham Village Hall
18:00 Sunday@6, Henham Church

Sunday 22nd June

- 08:45 Prayer Book Holy Communion,
Elsenham Church
10:00 Morning Service, Ugley Church
10:30 Morning Praise Communion,
Henham Church
18:00 Sunday@6, Henham Church

Sunday 29th June

- 08:45 Prayer Book Morning Prayer,
Elsenham Church
10:00 Morning Service, Ugley Church
10:30 Morning Praise,
Elsenham Village Hall
18:00 Sunday@6, Henham Church

COMING UP:

Family Challenge Afternoon

Saturday 5th July, 3:30 – 5:30pm
at Henham Church

Bring your family, make up a team and complete challenges and enjoy a BBQ!

Other Regular Events

SUNDAYS:

Elsenham & Henham Sunday Club/ Explorers (Reception-Y5)

(Y1-Y6) Leave from Morning Praise Service, 10.30am Sundays: 8th, 15th, 22nd & 29th

Pathfinders (Y6-Y9)

Henham Church 6.00pm - leave from service to meet in New Church Hall, Henham Church. Sundays: 8th 15th, 22nd & 29th

Crammin' (Y10-Y13)

Henham Church 6.00pm – leave from service to meet in New Church Hall, Henham Church. Sundays: 8th, 15th, 22nd & 29th

MID-WEEK AND SATURDAY:

Seekers After School Bible Club (Y3-Y4) Old Frank's 3.15pm

Mondays: 2nd, 9th, 16th, 23rd & 30th

Christian Play (Y1-Y2)

Rowan House, Elsenham 3.15pm
Tuesdays: 3rd, 10th, 17th & 24th

Little Fishes Pre-School Group

Church Room, Henham Church
10.30am Thursday: 5th, 12th, 19th & 26th

Little Fishes Pre-School Group

Elsenham Memorial Hall 10.00am
Fridays: 6th, 13th, 20th & 27th

Church Lunch Club

Elsenham Memorial Hall 12.30pm
Fridays: (2nd & 4th Friday of the month):
13th & 27th

For information on all these events, please contact office@heuchurch.co.uk or go to www.heuchurch.org



EFFORTLESS BOOKKEEPING SOLUTIONS FOR YOUR BUSINESS

ARE YOU...

- Spending weekends sorting receipts instead of with family?
- Unsure if your business is actually profitable?
- Stressed about missed deadlines?
- Making decisions without clear financial insights?

IMAGINE...

- Handing over all bookkeeping to a trusted professional
- Receiving clear monthly reports
- Knowing exactly where your business stands financially
- Finally focusing on what you do best

Why wait? Free up your time and reduce stress today.

CONTACT US NOW

07976 849144

WWW.SALTERACCOUNTING.CO.UK

ZUMBA with KAZ!

fitness

FUN

MUSIC

DANCE

MONDAY 9.30am

Elsenham Memorial Hall CM22 6BY

THURSDAY 7:45pm

Hillmead School CM23 4PW

All ages and abilities

Children welcome to come along

There are many ways to get fit,
some are just more fun than others.



Like **Kaz Zumba** on Facebook

Visit my website Kazs.zumba.com

Contact Kaz

07976 849 144

kaz.zumba@yahoo.co.uk

AID FOR ROMANIA

By Richard Peake ☎ 850374

The spring lorry has now arrived safely in Romania after clearing customs with no problems. About 35 poor families were given clothes and three or four items of furniture for their meagre houses (more like shacks).

Our warehouse is now empty and we are collecting for the winter lorry. Some of the goods will be given free to needy families in Mărășești (not far from the border with Ukraine) as nominated by the local Baptist church and others by the town mayor, with the better quality goods sold through our charity shop with proceeds helping to pay the costs of the minister as well as helping the same poor sections of the community with health, education and improving their terrible housing conditions. We are now wanting: -

- Clean **winter** clothes for adults and children (under 3yrs must be new), we are always desperate for **children's clothes**. Please wash any clothes that need it before bringing them. **Any shoes and footwear MUST be brand NEW.**
- Beds (Single or Z beds and any spare mattresses), sturdy iron or wooden framed beds are very desirable - **no divans**.
- Cushions, bed sheets, pillows, duvets & blankets (single and double).
- Towels, toiletries (including loo rolls).
- Umbrellas and rugs (no carpet offcuts).
- Building and workshop tools (also some types of gardening tools and sturdy wheelbarrows).
- Surplus school tables (must be 2ft clearance underneath i.e. not infant) and stackable adult size chairs (please ask any contact with a local school or village hall who are/maybe re-furbishing).
- Sturdy chests of drawers, bedside cabinets, kitchen/dining tables (either drop-leaf or removable legs).
- Irons and boards.
- Kitchen items (crocery, cutlery, utensils, pots/pans – especially big sizes e.g. preserving pans).
- Wheelchairs, crutches, walking sticks, zimmers and boxes of incontinence pads.
- Bandages and dressings (*absolutely NO pills, medicines, or creams*).
- Rucksacks and holdalls (must be in good condition).
- **Costume jewellery.**
- Footballs.
- Bikes and scooters.
- Large suitcases - but not the old-fashioned types.

Continued on page 31

tdcelectrical

covering all aspects of
domestic electrical installations

contact us for a free estimate

07960 941138

contact@tdcelectrical.com

www.tdcelectrical.com



Pike's Plumbing & Heating

Whether you're looking for a plumber or heating engineer, Pike's Plumbing & Heating can help.

If it's an emergency, simple problem or you're just thinking about a new boiler or bathroom give me a call – I'm available when you need me 24/7. Now's a good time to think about servicing your boiler too and make sure you're not left out in the cold! No Call-Out Charges & Free Quotations

Tel: 07889 140035

Email: info@pikesph.co.uk

Web: www.pikesph.co.uk

Craig Pike





It has been a busy year so far at St. Marys Church and we finally opened our new building and toilets over Easter. Hopefully a full report by our Church

Wardens will appear elsewhere in this magazine this month. It is a wonderful new building and a great asset to us all.

We held our Fabric Fund AGM on March 18, and the committee remain much the same as last year. No surprises there! However, I can report some good news that we were able to help our church with the repairs to the roof and gutters at a cost of £11,800 and contribute £1,197.80 towards the repair of the church wall in the corner. We have also pledged £5,000 towards a new replacement path linking the Church to the new St. Marys Rooms. This will have to be laid in York Stone as stipulated by the Diocese. The Fabric Fund are very grateful for your support and donations at our fund-raising events, and you always give so generously. Without you none of this work could be carried out to our lovely Norman Church that we are so lucky to have.

Now, a date for your diary. The Fabric Fund will be holding a Vintage/Retro Exhibition on the weekend of July 19 and 20 at St. Marys Church. This will include a collection of Vintage clothing, toys, games and cameras. So, if you have something you would like to exhibit or even sell, please do get in touch. Look out for the advertising and details nearer the time.

Finally, a huge thank you to the editors, helpers and distributors of this magazine. You have kept our community informed and inspired over many years. I, like many are going to miss that ubiquitous little yellow magazine. It was always such a good read with a nice cup of tea. How it will fare in its new format remains to be seen but let's wish it well.

Continued from page 29

- Ear defenders for the manual workers and high-viz vests/jackets.
- Small toys such as push-along cars, cuddly toys etc (no big toys as these cause much jealousy!).
- Christmas trees and decorations etc.
- Large plastic storage boxes with lids.

We need cash donations for the cost of the lorry as it now costs more to send as diesel is not cheap and we must now clear customs.

If you have any of the above please bring them around to 1 Hall Close, Henham during June.

Contact Richard Peake first on 01279 850374 or 07831 406225 to arrange delivery or collection etc.

DREAM, EXPLORE, *Discover*

OFFER
**10%
OFF**

YOUR NEXT BOOKING
USING THIS ADVERT.

YOUR LOCAL *Personal Travel Consultant*

We can look after all your travel requirements including hotels, flights, package holidays, villas, cruises, car hire and much more.

*Subject to availability. Only available on selected deals. Please mention advert when requesting a quote.



Carla Jayne at Hays Travel



cj_haystravel

01279 886731 | 07590 804702 | carla.jayne@hays-travel.co.uk
haystravel.co.uk/personal-travel-consultants/carla-jayne



Hays Travel

Mat Duxbury

PAINTING



Professional Interior and Exterior Painting Specialist

References available on request

20 Years' experience

Fully Insured

NVQ Qualified and Health and Safety Certified

Local, reliable and friendly service guaranteed

For a free estimate please contact Mat on ☎ 07810 250426 or
email ✉ mat@duxburypainting.co.uk

ELSENHAM



ST MARY'S CHURCH

By Roger Clark and Charles Willbe, Churchwardens

Back in September 2017 we told you of our ambitious plans to provide toilets and refreshment facilities at St. Mary's Church. In fact, our journey had started earlier - it was in July 2013 that the Parochial Church Council agreed to pursue this project.

From time to time over the intervening years we have updated you with what progress had been made, often including appeals for financial assistance.

We are now delighted to announce that after nearly 12 years we finally have our building. St. Mary's Rooms, as it is known, sits in the north-west corner of the churchyard and comprises a meeting room with a kitchenette, a unisex toilet and an accessible toilet.



In addition, there is a public toilet for the benefit of visitors to the church and burial ground, and the adjacent allotments.

None of this would have been possible without the generous financial support of the church family and very many villagers, together with a grant from the Friends of Essex Churches. We are extremely grateful for this support and hope that you will be as pleased and proud of what we have achieved as we are.

STRUGGLING? WE'RE HERE TO HELP

✉ help@uttlesfordca.org.uk

www.uttlesfordca.org.uk ☎ 01799 618840



Being part of a safe, positive community is vital for our mental health and wellbeing. We thrive when we have strong connections with other people and supportive communities that remind us that we are not.

Uttlesford Frontline is a free, easy-to-use online tool that helps you find local health and wellbeing services in your area. So, if you or someone you know is struggling, don't wait - visit uttlesfordfrontline.org.uk and take the first step toward getting the help you need.

If you can't easily access the internet, or need a little extra help, give our friendly advisers a call, or pop into the Library in Dunmow, Stansted and Thaxted or the Old Schoolhouse in Takeley. If we aren't there in person you can still speak to an adviser via our simple one-touch video link. Advice is always free and confidential.

E. N.C. Electrical Limited

Industrial Agricultural Domestic

Electrical Installations

Fire Alarms/Emergency Lighting

Fault Finding

Portable Appliance Testing

Fixed Wiring Test & Inspection

Over 25 Years Experience in the
Electrical Industry

Contact: Ian Arran

Tel. 01279 647042
Mobile 07776 252994



Email: eneelectri-
calltd@btinternet.com

44 Alsa Gardens Elsenham

Bishop's Stortford Herts, CM22 6HB

Replace, Repair & Revive Your Double Glazing

All types of double glazing repairs, maintenance & installations, including emergency callouts. At replaceglaze.com we provide a reputable, family-run double glazing repair & installation service.

Our services include:

- Double glazing installations, repairs & maintenance
- Aluminium, composite & uPVC installations
- Windows & door handles
- Locks & hinges
- Mistied units
- Ratio door wheels
- Door adjustments & lubrication
- Aluminium bifolding doors
- Composite doors
- Aluminium/uPVC roof lanterns

01279 282997 01371 701000

info@replaceglaze.com www.replaceglaze.com

replaceglaze

TAKELEY IRONING & DRY CLEANING

OPENING TIMES
MONDAY - FRIDAY 8AM - 5PM
SATURDAY 8AM TO 12PM

FREE LOCAL COLLECTION & DELIVERY TO YOUR DOOR

Takeley, Elsenham, Henham, Stansted, Felsted, Hatfield Broad Oak, Hatfield Heath, Sheering, Dunmow, Sawbridgeworth, Broxton, Spellbrook, Molehill Green, Broxton, Little Canfield.

- ✓ WASHING & IRONING
- ✓ IN HOUSE DRY CLEANING
- ✓ 48 HOUR SERVICE
- ✓ DUVETS
- ✓ CURTAINS
- ✓ ALTERATIONS
- ✓ WEDDING DRESSES

The Centre, Dunmow Road (Behind Londis)
Takeley, Bishops Stortford
Herts, CM22 6SH

Email: takeleyironing@gmail.com
takeleydrycleaning@gmail.com

Tel: 01279 871245



We know that being outside is good for our wellbeing, both mental and physical. Besides the open countryside, we are fortunate in The Hundred Parishes to have parks and gardens where we can walk, sit and enjoy nature. I will mention just a few.

Bridge End Gardens in Saffron Walden was created by a local businessman and Quaker, Francis Gibson, in the 1840s. It is now managed by Saffron Waldon Town Council. Delights to explore include the hedge maze, rose garden and Dutch garden.



The Gardens of Easton Lodge

The Gardens of Easton Lodge in Little Easton have limited opening hours which can be found on our website www.hundredparishes.org.uk. They were designed by Harold Peto in 1902 for the Countess of Warwick who lived at Easton Lodge.

In Sawbridgeworth, Pishiobury Park was redesigned by Capability Brown in the 18th century as an enclosed park. It is a registered historic park and includes wet woodland, grazed fields, an oak walk, meadows and part of the River Stort.

Birchanger Wood comprises 69 acres of ancient, coppiced woodland, managed and owned by the Birchanger Wood Trust. Three miles of all-weather, wheelchair-friendly paths make it easy to explore.



Birchanger Wood

In Stansted Mountfitchet, the Aubrey Buxton Nature Reserve is a 25 acre woodland with six man-made ponds. It was originally part of the park and garden of Aubrey Buxton's house. He was a co-founder of the World Wildlife Trust and donated the land to Essex Wildlife Trust. Today you can enjoy circular walks passing the ponds through the wood.



Aubrey Buxton Nature Reserve

June is the month when many private gardens open to the public, even groups of gardens in Duxford and Ickleton – details appear on the What's On section of our website.

We hope you enjoy the summer and explore some of our wonderful parks and gardens.

The Hundred Parishes is 450 square miles of northwest Essex, northeast Hertfordshire and southern Cambridgeshire that is largely unspoilt and is richly endowed with many fine examples of agricultural and built heritage. The area has shared a common history which shaped and preserved its distinctive landscape of small and medium-sized farms linked by winding lanes and ancient rights of way to hamlets, villages and then to small market towns. For more information visit www.hundredparishes.org.uk.



alun
design
consultancy
architectural design
planning
project management
interior design

Local architecture company with over 25 years experience designing and obtaining approval for new homes, extensions and conversions

Free consultation
01799 540 600

info@alundesign.com

www.alundesign.com

Neville House, Station Road,
Wendens Ambo, Saffron
Walden, Essex, CB11 4LB

D BONNEY & SONS MANUDEN MOTOR VEHICLE ENGINEERS

MOT TESTING

ALL MAKES OF VEHICLES SERVICED INCLUDING FOUR WHEEL
DRIVES

TRW BRAKE CENTRE

DIAGNOSTIC AND FAULT FINDING

WELDING AND CHASSIS REPAIRS

SELECTION OF USED CARS

CALOR GAS STOCKIST

WE HELP YOU THE MOTORIST WITH A CHEAPER LABOUR RATE

GUARANTEED WORKMANSHIP

FREE COLLECTION AND DELIVERY IN LOCAL AREA

PLEASE RING: MALC, NEIL OR CRAIG

☎ 01279 813315 OR ☎ 01279 815946

OMEGA RUNNING CLUB

Contact: June Brennan ☎ 07749 858353

Meets Monday evening outside the Cock at 7.00pm and Saturday morning at 9.00 outside Vision fitness gym and all are welcome. Run, jog or walk, the route is marked out with yellow fish, the fish are usually in place for a few days before and after the run, so you can enjoy the route whenever you see a fish. We are working up to a 10k run ready for the Henham 10k on 22 June.

Our runners this year have already completed many significant races. I have listed a few of them below.

William Colby - the gruelling London marathon on an amazingly hot day.

Alcus Erasmus - the Northstowe half and the Cambridge half Marathons.

Andy Fuller Lewis - the 4-race challenge at Disney world in Florida this challenge included a Marathon.

Andy and Harry Brennan - the Cambridge Boundary run.

June Brennan and Pushpa Mystery - the Bath half.

This is just a sample of the activities undertaken by our merry band this year so far. Don't worry, you don't have to run that far, you are very welcome whatever your level.

FROM THE PARISH REGISTERS

Funeral: A funeral service at Elsenham Church, followed by a burial in the churchyard on 7 May 2025, Barbara Mary Service, aged 95 years, formerly of Conewood Manor Nursing & Care Home, Great Dunmow.

Burial of Ashes: On 1 May 2025 at Elsenham Churchyard, Aubrey James Thurgood.

Church Contact Telephone Numbers, E-Mail and Web-Site Addresses

Vicar	01279 850480 louis.wilson@heuchurch.co.uk	Rev. Louis Wilson
Church Office	01279 814285	Anna Hicks
Church e-mail	office@heuchurch.co.uk	
Church web-site	www.heuchurch.co.uk	

Enquiries about thanksgivings, baptisms, weddings and funerals should be made in the first instance to Anna Hicks at the Church Office ☎ 01279 814285.



TRADITIONAL DRIVEWAYS

☎ 01992 450356

☎ 07961 882027

✉ tdmaintenance@btinternet.com

www.tdms-driveways.com

Block paving specialists. Black and red tarmac. Hand and machine laid tarmac. Turfing and fencing. Residential and commercial. All work guaranteed. Free estimates.



Advertise your business
in Elsenham News
Contact us at

elsenhamnews@hotmail.co.uk



Double Glazed Units – **SAME DAY**

- Table Tops
- Shelves
- Emergency Glazing
- Replacement Misted Double Glazing
- Greenhouse Glass
- Cat and Dog Flaps Fitted
- Splash Backs – Any Colour
- Glass Cut To Size
- Emergency Boarding
- Safety Glass
- Mirrors

**LOCAL COMPANY – GREAT PRICES – RELIABLE
PROMPT SERVICE**

Elsenham – Great Dunmow – Bishops Stortford - Stansted



ELSENHAM BOWLS AND SOCIAL CLUB

By David Thomas



Congratulations to Trevor Hackett who is the winner of the club Clear Winner Trophy. This was the first internal club competition of the year. All our bowling members that took part enjoyed a lovely warm bowling day on the green and were pleased to start the season with such a relaxed enjoyable competition.

Our congratulations also go to David Spearman and Duncan Dellow who won the Club Kings Arms Cup competition that was held on the first May Bank Holiday this year. This was a close-run competition with club members taking part in a series of play offs resulting in the finalists being selected. David and Duncan were up against Peter Watson and Dieter Denis in a well fought final in the afternoon of May Spring sunshine.

The club bowlers have three club competitions in June including our traditional Men's and Ladies' Triples competition. This is a fun day where the best of all players comes out with a challenge to play to the strength of the best team.

On June 20 we are pleased to have our 2025 County Coaching Day when club members will be able to participate in tailored activities designed to improve their bowling. This promises to be a challenging and rewarding event which is open to all club bowlers of all skill levels and abilities.

July 5 brings the return of our Charity Quiz night to the club. Tables of up to eight team members are invited to book with Trevor on ☎ 07445 437437. A light supper is included in the price at just £7 per person.

A quick "Save the Date" notice for our next music night on July 12. The Caverners group will be playing a range of 60s and 70s chart topping hits for an enjoyable mid-summer evening's entertainment. Tickets are available now at £7.50 for members and £12.50 for non-members. Ticket availability is limited so please call Trevor on ☎ 07445 437437 to secure your ticket for the event.

Remember our regular activities are open to anyone interested including Wednesday and Thursday evening darts, Friday team roll up and social night. Please pop along for a chat.

For full details about Elsenham Bowls Club including membership and our opening times please see our website www.elsenhambc.org.uk

CHIROPODIST & PODIATRIST

Bishop's Stortford

- Orthotics
- Diabetic Foot Care
- Saturday Clinics
- Routine Treatment

R. Handford & Colleagues
H.C. P.C Registered

Bishop's Stortford - 16 Hockerill Street

01279 652249

www.feet.org.uk

Binwash

We clean
your
wheelie
bins!

Commercial & Domestic



Low cost & highly efficient service!

Professional machinery

4 weekly schedule or one-off clean

High pressure wash and dried

Disinfected and deodorised

www.binwash-uk.com

01799 529899

enquiries@binwash-uk.com



Street Dance
Pop Singing
Acting

FREE
Trial
Offer



New classes in
Elsenham

For more details:

Tel: 01376 331543

Email: admin@rascals-uk.com

Web: www.rascals-uk.com

Fun classes
inspiring Confidence,
Character & Creativity
for children aged 3-12yrs



**DECORATING SERVICES
ALL ASPECTS OF DIY**

NO JOB TOO SMALL

For a friendly reliable service
Just Ask.....

GARY KING

Home : 01279 850001

Mobile : 07951 452602

g.king962@btinternet.com

NATURAL OUTLOOK

By Heather Salvidge ☎ 814153



Earlier this year while walking and driving out and about in the village and further beyond, I was startled by the sheer amount of dandelions! They were all over the roadside verges, in people's gardens and in fields, these mainly resting in large areas or used for grazing. Their deep yellow glowed, especially when the sun came out. They are called "Dandelion" because in the French language it is called 'dent-de-lion' i.e. 'Lions teeth'. If you look at the dandelion's leaves you will see they have a sharply jagged edge and these are the 'lions' teeth'.

Then another early plant that I saw at the same time was Hoary Cress, which is much more likely to be seen in coastal areas, we see it on roadside verges looking like a foaming mass of white flowers. They grow on the sides of the more used roads which are salted in winter months to counteract icy patches. This year they were taller and had a thicker mass of flower heads and sometimes have a really long stretch such as on the B1383 towards Newport, on the B1051 leading up to Thaxted and more on the road towards the Airport after Molehill Green and elsewhere.

Other 'whites' being early at coming into flower because of this winter etc. were white dead nettles, which are profligate including in our garden. Also, garlic mustard, if you rub the leaves you can see why it gets its name! These plants are anything between 10 inches and up to 30 inches in some places.

Then there were in a few places some early wild specimens of pink flowers, for instance Herb Robert, only smallish ones but their pink flowers showed up on their pink stems. By the time I had found out where there were even more of the above specimens, the more usual roadsiders were beginning to show e.g white cow parsley and pink hedgerow cranesbill and the dandelions were starting to have 'clocks'.

The new home of Elsenham News. Simply put your mobile phone camera over this QR code and follow the link.





T.J. Patmore
Building Services

Extensions – Loft Conversions
Roof work – Carpentry – Roof Tiling
First and second fix carpentry
Kitchen fitting
Built in wardrobes
Decorating interior and exterior
Floor and wall tiling
Fencing – Decking – Patios
Supply and fix u.p.v.c. windows
House maintenance

*Call Trevor for friendly help, advice
and FREE estimates*

mob 07932 666224



S.E.P



**TREE CARE & GARDEN
MAINTENANCE**

Tree Topping & Felling
Pruning & Pollarding
Hedges cut, Trimmed & Removed
All waste Chipped & Removed
Garden, Garage & Site Clearance
Gravel Driveways & Paths
Fencing
Turf Supplied & Laid
Jet Washing Paths & Driveways
Local Tradesman
20 years experience
For a free estimate Phone
07903 621657
08000 588057
14 Day Cooling off Period



01279 871 777 - 0800 587 2556

6 Newman Road, Little Canfield, Dunmow, Essex, CM6 1GR

MEDIACOMS

Aerial Satellite AV Security

- Aerial Installations
- CCTV & Security Alarms
- Audio Visual Installations
- Wireless & Wired Networks
- Solar Panel Installations
- Sky Installations & Subscriptions
- Freesat Installations & Receivers
- Multiroom Music & TV Distribution
- TV Wall Mounting Services
- Family Run Business

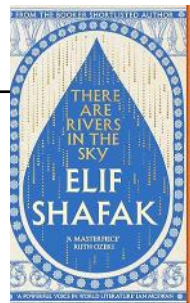


www.mediacom.com

info@mediacom.com

THERE ARE RIVERS IN THE SKY BY ELIF SHAFAK

Reviewed by Marion Giles for Elsenham Book Group



“*There Are Rivers in the Sky* is a rich, sweeping novel set between the 19th century and modern times, about love and loss, memory and erasure, hurt and healing, centred around three enchanting characters living on the banks of the River Thames and the River Tigris – their lives all curiously touched by the epic of Gilgamesh.” So says the blurb on the back of the book.

Elif Shafak is a unique and powerful voice in world literature. *Ian McEwan*

An absorbing novel. Shafak is a novelist whose interest in mapping the intricately related world and its history goes beyond literary device. *The Guardian*

This was the choice of the book group this month.

The Amazon AI summarises: Customers find this book to be a must-read with beautiful writing and a well-researched story. One customer describes it as a gripping historical tale of lives, while others appreciate its profound and educational content. The character development receives mixed reactions, with some finding them unforgettable while others note they are predictable and one-dimensional.

The story travels through ancient Byzantine, Victorian England to modern times with the idea that rivers carry life onwards. This book is an historical tale of lives asking questions about empires, ownership of treasures, women and Gilgamesh.

The story begins with a single drop of rain falling on the head of king Ashurbanipal in 630 BCE. The same drop is recycled through the novel. It falls as a snowflake on the lips of Arthur in Victorian London, moistens the parched lips of the Yazidi child Narin in Iraq in 2014 and slips as a teardrop from the eye of scientist Zaleekhah in 2018. The narrative weaves together their lives: a man, a woman, a child and two rivers, the Thames and the Tigris.

Arthur was particularly well drawn and it was easy to embrace Victorian London. Water is made up of 1xH and 2xO, H₂O. Arthur is the H and Narin and Zaleekah the Os. There is an overall sadness to each of their stories, particularly the experiences of Narin. Zaleekah was the weakest character and the descriptions of her choices seemed less detailed and harder to understand or feel quite so empathetic.

This is a long novel but the switching between the stories encourages us to want to know how and when their stories will coincide.

Elif Shafak signs off her novel to Nisaba, who was the goddess of stories.



Our Farmers Market runs on the last Saturday of every month, but just to make things easier, these are the dates for the rest of 2025:

The markets for the rest of the year are:

June 28

July 27

August 30

September 27

October 25

November 29 (all things festive & more!)

We will have many of our fabulous regular sellers, such as the delicious Mapuldor sourdough bread, the brilliant Mel with her preserves, chutneys and oils, the Flying Pig Company's local meat just perfect for the weekend, the most amazing fresh coffee, mouthwatering cakes and even your dog is catered for by Pampered Pooches dog treats!

You will be able to buy eggs, honey, homemade savouries perfect for lunch, fish and other frozen yummy products, British cheeses, freshly made chilli jams and ginger jellies, the most beautiful plants and flowers at such reasonable prices, and we are constantly on the lookout for new and fresh ideas, so do pop by.

Helen will be there with Ernie, her converted milk float selling food refills like rice, pasta, etc, so be sure to bring your containers! She will also have her sustainable cleaning products too.

This Market is for our fabulous community to get together, so why not meet friends there and have a coffee whilst deciding how you are going to treat yourselves? It's only once a month!

This Market helps to support our fabulous community and gets local businesses together; and of course, all proceeds from the Market go to local charities.

No charge for entry, you just need to enjoy and immerse yourself in all the gorgeous produce!

The Elsenham Farmers Market Team

COOKERY CORNER

By Sue Johnson ☎ 812704



One of my favourite recipes, adapted from the kitchen of the wonderful Mary Berry. These tarts look impressive and are great for lunch, served with a salad, or as a light snack on their own.

ONION, COURGETTE AND BLUE CHEESE PUFF TARTS (makes 6)

1 x 320g packet ready-rolled puff pastry
A knob of butter. 2 tablespoons olive oil
2 large onions, thinly sliced
1 tablespoon light soft brown cane sugar
2 teaspoons balsamic vinegar
2 large courgettes, sliced on the diagonal
3 tomatoes, deseeded and sliced into thick strips
7oz (200g) stilton, crumbled into cubes
1 egg, beaten.
Salt and freshly ground black pepper

Line a baking sheet or tray with baking paper. Lay the pastry on a floured surface and re-roll a little more to make a rectangle measuring 12x18in (30x45cm). Using a sharp knife, halve the dough widthways and then cut each half into three 6in (15cm) squares. Use the knife to score a border round each square, about 3/4in (2cm) in from the edge. Prick the base of the inside square with a fork and place on the prepared baking sheet.

Heat the butter and 1 tablespoon of oil in a large frying pan, add the onions and fry gently for about 10 minutes to soften. Stir in the sugar and balsamic vinegar, cover with a lid and cook over a low heat for about 15 minutes until completely soft. Remove the lid, drive off any liquid over a high heat, stirring continuously, until golden and lightly caramelised. Season with salt and pepper, then remove with a slotted spoon and set aside.

Preheat the oven to 220°C/200°C fan/gas mark 7.

Add the remaining oil to the pan and fry the courgettes over a high heat for about two minutes on each side until golden. You may have to do this in batches so as not to overcrowd the pan.

Spread the caramelised onion and courgettes over the pastry squares. Arrange the tomato slices on top and scatter with the cubes of cheese. Brush the beaten egg around the pastry border. Bake for 20-25 minutes or until golden brown and crisp. Serve hot or warm.

CHEF'S RECOMMENDATIONS: The tarts can be assembled and kept in the fridge for up to 8 hours before cooking to serve. Mozzarella or Cheddar cheese, instead of Stilton, give a milder flavour.

Editorial Information

Articles

The **last day** for editors to receive articles, advertising and letters, which must contain the author's name and address (which may be withheld), is the 8th of each month.

Articles should ideally consist of a half page of A5 or a full page of A5. Articles over these sizes or letters containing more than 500 words may be edited depending on space.

Copy submitted after the 8th may not be accepted but will, if deemed appropriate, be held over to the next month. We are happy to receive hand written articles which ideally should reach us earlier than the 8th to allow for scanning etc.

Dates for the Diary must include date, event, venue and time.

Please submit all articles, adverts, letters and queries to the editorial team at:
elsenhamsnews@hotmail.co.uk

General Notes

Whilst every effort is made to ensure that information is correct, the editorial team cannot be held responsible for any inconvenience caused through errors or omissions.

The views expressed within this magazine are not necessarily the views of the editorial team or Elsenham Community Association (ECA).

The editors and the ECA can accept no responsibility for the goods or services advertised in the magazine. Advertisements are included in good faith. The editors reserve the right to allow replies to letters/articles to be made in the same edition when appropriate.

The editors' decision is final.

Wanted/For Sale items: individuals may submit short details of items wanted or for sale etc at no charge. These will be included in the next available issue of the magazine subject to space and acceptance by the editors.

Subscriptions

Elsenham News is available by email (on a pdf) at no charge, or through the post at a cost of £13 per annum. Contact **elsenhamsnews@hotmail.co.uk**

Advertising

The costs are as follows:

	Single Insertion	Annual Cost (11 issues)
Half Page	£20.00	£190.00
Quarter Page	£10.00	£100.00
Inside Page	£50.00	n/a
Back Page	£75.00	n/a

Village organisations attract reduced rates, £5 for ¼ page. Half and full-page adverts attract full rates.

To place an advertisement:

If you have any queries, please email us. Please send your advert as Word or Publisher via email to:
elsenhamsnews@hotmail.co.uk

Advertising Editor: TBA

Business Advertising

Cheques should be made payable to "**Elsenham Community Association**".

Editorial Team:

**Gary Williams
Emma Bailey
Marion Giles
Patricia Davis
Anne White
Nyaradzo Chabata
Angie Wenlock
David Newland**

Previous issues of Elsenham News are available on the ECA Website

www.ElsenhamCommunityAssociation.org.uk

UPCOMING EVENTS

Charity Quiz Bowls and Social Club July 5

Music Night at the Bowls and Social Club July 12

The Fabric Fund Vintage/Retro Exhibition, St. Mary's Church July 19 & 20

Flower Show, Memorial Hall, August 16

VILLAGE CONTACTS

Airport Roadside Parking		0800 731 2385
Beavers	1sthenhamandelsenham@gmail.com	
Bowls Club	Therese Clear	07759 158859
Brownies	elsenhambrownies@gmail.com	
Church Office (Old Frank's, High St, Elsenham)	Anna Hicks	814285
County Councillor (Stansted)	Ray Gooding	813103
Cricket Club	David Brown	831011
Cub Scouts	1sthenhamandelsenham@gmail.com	
ECA (Chair)	Sue Waite	07956 899326
ECA (Secretary)	Chris Richardson	07940 465627
ECA Website	www.ElsenhamCommunityAssociation.org.uk	
Elsenham Eagles	elsenham.action@btinternet.com	
Elsenham Farmers Market	elsenhamfarmersmarket@gmail.com	
Elsenham Surgery	www.elsenhamsurgery.nhs.uk	814730
Elsenham C of E Primary School	Linda Todd Headteacher	813198
Elsenham Church PCC Secretary	David Hill	812397
Elsenham Fete	ElsenhamSummerFete@gmail.com	
Elsenham Rights of Way website	www.e-voice.org.uk/erowos/	
Friends of Elsenham School (FOES)	Louise Judd	foespta@hotmail.com
Henham & District Garden Society	Moyra Jackson	647351
History Society	Mike Rea	evhs12@hotmail.co.uk 813634
Member of Parliament	Kemi Badenoch	0207 219 5214
Memorial Hall Bookings		
www.elsenhamcommunityassociation.org.uk/hiring-elsenham-memorial-hall		
Neighbourhood Watch Co-ordinator	Frances Lambert	07771 728332
	franceslambertnhw@btinternet.com	
Parish Clerk - Louise Johnson	louise.epc@gmail.com	07456 791727
Elsenham Parish Council Website	www.elsenham-pc.gov.uk	
Police		101
Post Office		812175
Rainbows	elsenhamrainbows@gmail.com	
Scouts	1sthenhamandelsenham@gmail.com	
St Mary's Fabric Fund	Elizabeth Barker	813543
Tennis Club	Petra Studholme	814667
Tots & Toddlers	Dawn Temple	07944 841358
Uttlesford District Councillors	Petrina Lees	07713 074656
(for Elsenham & Henham)	Bianca Donald	07941 880279
Village Hall Bookings	elsenhamvillagehall@gmail.com	
Womens Institute Secretary	Gill Hathaway	813385
Youth Football Club (Chairman)	Ricky Lambourne	info@elsenhamyfc.co.uk

If you would like your village organisation contact to appear regularly in the magazine, please contact one of the editors, see opposite for details.

BRUNCH AND BALLS

Happy Father's Day!



This Father's Day dads can enjoy 50
FREE balls on our Driving Range when 2 or
more people order from our breakfast menu.

Sunday 15th June 2025

T&Cs apply

Please contact

bar@golfworldstansted.co.uk