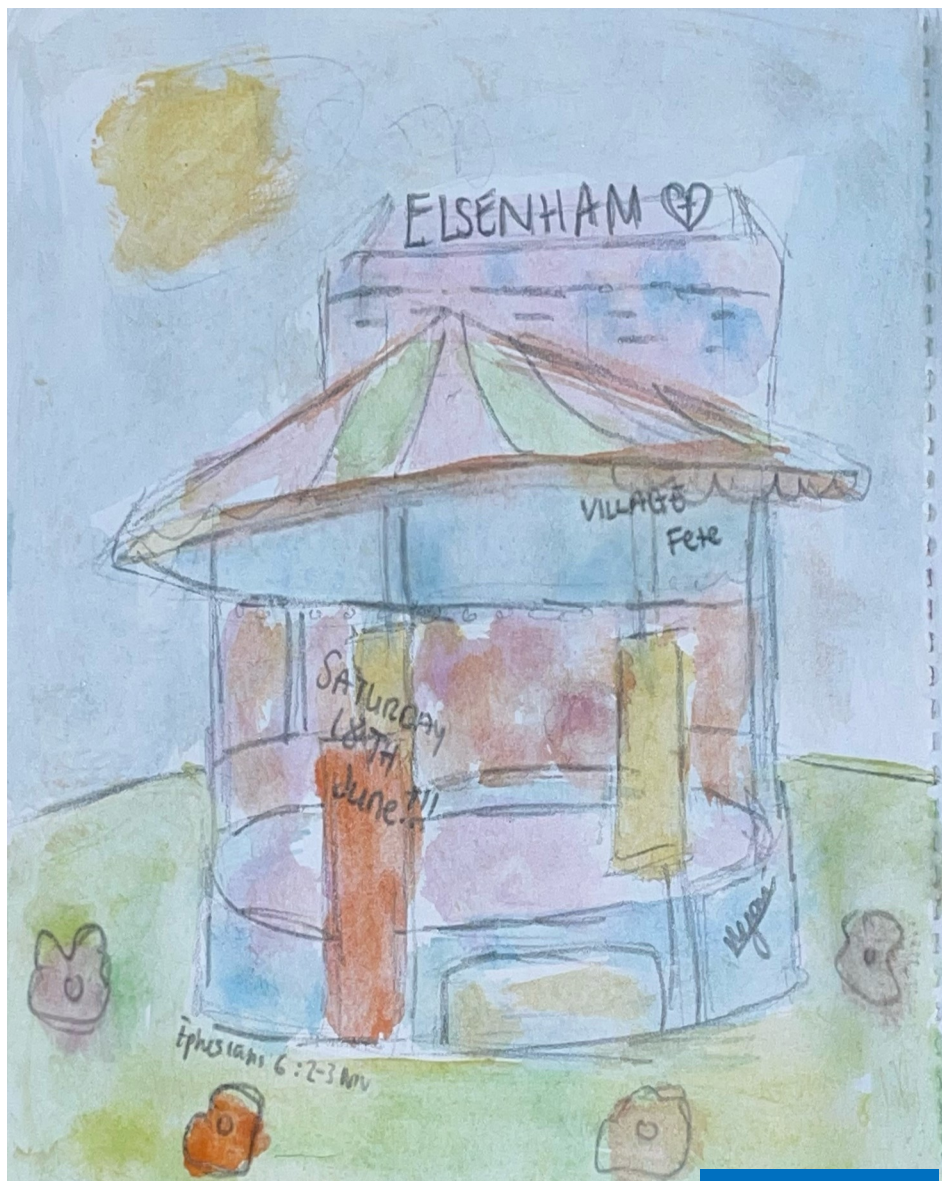


# Elsenham News



75p where sold

[elsenhamsnews@hotmail.co.uk](mailto:elsenhamsnews@hotmail.co.uk)

June 2022

June 2022

### **Elsenham Village Regular Monthly or Quarterly Activities**

Parish Council 1st **Monday** of month 8pm (excl. Bank Holidays) Memorial Hall

Village Café Coffee 1st & 3rd **Tuesday** 9.30 - 11.30am Memorial Hall

& 2nd & 4th **Tuesday** 9.30 - 11.30am Bowls & Social Club

Henham & District Garden Society 1st **Tuesday** of month 2.30 - 4pm Memorial Hall

Community Choir 1st & 3rd **Tuesdays** of the month 7-8.30pm Village Hall

Life Drawing 2nd **Tuesday** of month 7.30 - 9.30 Village Hall

Village History Society 1st **Wednesday** of month quarterly 7.45pm Memorial Hall

Natter Night 2nd **Tuesday** of the month from 7.30pm Bowls & Social Club

Village History Society 1st Wednesday of the month quarterly 7.45pm Memorial Hall

Church Lunch Club 2nd & 4th **Friday** of the month 12.30pm Memorial Hall

## **June diary**

Wed 1	Flower Pot Festival Starts	
Sun 5	Platinum Jubilee Picnic	Playing Fields
Mon 6	Parish Council Meeting	Memorial Hall 8pm
Tues 7 & 21	Village Café Coffee Morning	Memorial Hall 9.30 - 11.30am
Tues 7	Henham & District Garden Soc	Memorial Hall 2.30pm
Tues 7 & 21	Elsenham Community Choir	Village Hall 7pm
Wed 8	History Society Meeting	Memorial Hall 7.45 for 8 pm
Fri 10 & 24	Church Lunch Club	Memorial Hall 12.30 pm
Sat 11	Bingo	Bowls & Social Club 7.30 for 8 pm
Tues 14 & 28	Village Café Coffee Morning	Bowls & Social Club 9.30 - 11.30am
Tues 14	Life Drawing	Village Hall 7.30pm
Tues 14	Natter Night	Bowls & Social Club 7.30 pm
Thurs 16	Elsenham WI	Memorial Hall 7.45pm
Sat 18	Village Fete	Playing Fields 1—4 pm
Sat 25	Charity Quiz	Bowls & Social Club 7.30 pm
Sun 26	Garden Show Society	Open Gardens 1—5 pm

## Elsenham Village Regular Weekly Activities

Day	Time	Activity	Location
Monday	9.30-10.30am	Zumba	Memorial Hall
	10.30am	Health walk	Start at De Mandeville Green
	7-8.30pm	Guides	Village Hall (term-time)
	7.30-8.30pm	Shape to the beat	Memorial Hall (not 1st Monday)
Tuesday	4.45-5.45pm	Rainbows	Memorial Hall (term-time)
	6-7.30pm	Brownies	Memorial Hall (term-time)
	6-7.30pm	Cubs	Henham Village Hall (term-time)
	8-10.30pm	Tennis Club night	Tennis Courts
	8pm	Fitness Yoga/Pilates	Memorial Hall
Wednesday	9.45-11.30am	Tots & Toddlers	Memorial Hall (term-time)
	5.30-7.30pm	Slimming World	Memorial Hall
	5.45-6.45pm	Beavers	Henham Village Hall (term-time)
	7-9pm	Scouts	Henham Village Hall (term-time)
Thursday	9.30-11am	Slimming World	Memorial Hall
	6.30-7.45pm	Cubs	Henham Village Hall (term-time)
Friday	10-11am	Little Fishes	Memorial Hall (term-time)
	5.45-6.45pm	Beavers Group 2	Henham Village Hall (term-time)
Saturday	9am-12pm	Junior Football	Playing Field
	8.45-9.30am	Little Kickers Mighty	Village Hall (term time)
	9.35-10.20am	Little Kickers Junior	Village Hall (term time)

### Mobile Library

**The Mobile Library visits every third Thursday calling  
at Glebe End 11.50 am to 12.20 pm  
Next visit: June 16**



# Mat Duxbury

## PAINTING

**Professional Interior and Exterior Painting Specialist**

**References available on request**

**20 Years' experience**

**Fully Insured**

**NVQ Qualified and Health and Safety Certified**

**Local, reliable and friendly service guaranteed**

For a free estimate please contact Mat on ☎ 07810 250426 or  
email ✉ [mat@duxburypainting.co.uk](mailto:mat@duxburypainting.co.uk)

ELSENHAM



**Binwash**  
We clean  
your  
wheelie  
bins!

Commercial & Domestic



**Monthly Cleaning from £5!**

Bespoke bin cleaning machines  
4 weekly schedule or one-off clean  
Same day as waste collection  
Bins disinfected and deodorised

[www.binwash-uk.com](http://www.binwash-uk.com)

**01799 529899**

[enquiries@binwash-uk.com](mailto:enquiries@binwash-uk.com)

  
-STEPHENS-  
**CHIMNEY**  
SWEEP



*Insurance Certificate supplied -  
Fully  
Insured - Free Smoke Test  
Open Fires - Multi Fuel Stoves -  
Aga - Rayburn - Gas - Oil  
Stove installations*

**CCTV Surveys - Bird Nest  
Removal  
Local Business**

**Tel: 0800 112 3600**

**Mob: 07918 708626**

[www.stephenschimneysweep.co.uk](http://www.stephenschimneysweep.co.uk)

# THE NEWS REPORT

*From The Editors*

---



There is so much to see and do this month in our fantastic village. If you are a fairly new resident, please make sure you get along to the village fete on Saturday 18th.

There will be so much to do on the day and we are sure you will enjoy every moment.

The Elsenham Flower Show Society have arranged the Open Gardens tour again this year and, again, we recommend you take time out to go and enjoy this opportunity to see what can be done with a garden.

If you care about your environment, then why not meet up with the local police when they have their Elsenham day out on Monday the 20th. Tell them what is of concern to you. Better still, why not join the Speed Watch Team and do your bit to help prevent accidents or, possibly, fatalities on our small roads that seem to have become an opportunity for many to try out the performance of their vehicles.

But best of all is the fact that all this, and more, happens within our small community here in Elsenham. If you want to ensure we don't get over developed and just end up a suburban sprawl with no character, then please read Development Developments and make sure you stay up to date.

We at Elsenham News are still on the lookout for additional help. If you can spare a few hours a month just checking over articles for spelling mistakes and grammatical errors, then please do get in touch. We could use you!

The village now has a new Vicar and we hope you welcome him and his family when you get the opportunity. Why not take a walk up to the Church if you haven't yet visited. It is steeped in history.

We look forward to June and we look forward to reporting on the activities and events in the next issue.

---

## Regular features

Development Developments	Pg13	Ray's Reflections	Pg35
History Society	Pg29	Tennis Club	Pg39
Elsenham Flower Society	Pg21	Neighbourhood Watch	Pg41
Women's Institute	Pg19	Cookery Corner	Pg43
Church Calendar	Pg25	Book review	Pg45
Natural Outlook	Pg27		

# CLEAR OVENS

Oven Cleaning Specialists

01279 89 89 96

we accept cards!  
VISA  
MasterCard

Make your oven look showroom fresh with a professional clean from Clear Ovens. Our fully insured expert technicians will make it shine like new.



Instagram



The Association of Approved Oven Cleaners



MEMBER OF THE FEDERATION OF SMALL BUSINESSES

Covering Sawbridgeworth, Harlow Epping, Great Dunmow, Braintree, Stansted, Bishop's Stortford and surrounding areas.

01279 89 89 96 or visit us online at [www.clearovens.co.uk](http://www.clearovens.co.uk)

The difference is clear

## Essex Autospray

Your local Collision Repair Centre - Est 1982

- Free Courtesy Cars
- Free Estimates
- Low Bake Ovens
- Blackhawk Alignment



Tel: 01279 816296 E: [info@essexautospray.co.uk](mailto:info@essexautospray.co.uk)

[www.essexautospray.com](http://www.essexautospray.com)

M11 Business Link, Parsonage Lane,

# ELSENHAM PARISH COUNCIL 7 FEBRUARY 2022

By Louise Johnson, Clerk. ✉ [louise.epc@gmail.com](mailto:louise.epc@gmail.com) ☎ 07456 791727

---



For the fourth consecutive year Cllr. Graham Mott was unanimously elected Chairman of Elsenham Parish Council.

After the Chairman had signed the Declaration of Acceptance of Office, the following appointments were assigned to Councillors and co-opted members, eight Committees, four Working Groups, representatives to eight separate Outside Bodies and Co-Ordinator's to three other roles.

One of the slabs at the top of the steps leading to the slide in the children's play area had become unsteady, a temporary fix was arranged. All the slabs are now going to be re-cemented and new wooded framework installed.

There has been a delay installing the new equipment for the children's play area. Any projects over £25,000, must first be advertised on the Government Contracts Finder Website. The Parish Council are now arranging this.

The Teen Shelter's window has been broken again, either by accident or vandalism. It is going to cost £295 to have it repaired.

The new dogs' signs have been installed in the playing field, stating that only assistance dogs are allowed.

After three years, it is with regret that the Parish Council has decided to give three months' notice to terminate the PCSO's contract. Unfortunately, employing the PCSO had not accomplished everything the Parish Council had hoped. The contract with Uttlesford District Council had not been executed as it should, with terms and conditions not being met. The Parish Council felt Elsenham was not getting value for money.

However, it was noted that the PCSO had been very supportive of the Speed Watch Team, helping on many occasions. The Parish Council is to research alternative forms of policing, such as Special Officers.

Accessibility of the Parish Council's website is being researched, to make the website user friendly for everyone. Enquires are being made on employing someone to take over managing the website.

The Parish Council thanked Mr Allan Hathaway for cleaning the plaque on the memorial bench in the Spinney and also for cataloguing all the potholes in the village, which has been sent to Uttlesford District Council and Essex County Council Highways.

The next Parish Council meeting is to be held on Monday 6 June at 8pm in The Memorial Hall.

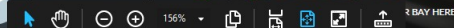
EAT, DRINK & HIT BALLS

 **TOPTRACER**

# DRIVING RANGE!

CELEBRATE AN EVENT WITH US TOO!  
SUITABLE FOR ADULTS & CHILDREN

SEE OUR WEBSITE FOR OUR COVID-SAFE PROCEDURE  
Golf World Stansted, Hall Road, Nr Stansted Airport, Essex, CM22 6FL  
01279 812 865 | [leanne@golfworldstansted.co.uk](mailto:leanne@golfworldstansted.co.uk)



Collector, collator and  
relator of life's special  
events

Are you planning or considering: a Memorial Service, a Funeral,  
Renewal of Vows, a Wedding or a Naming Celebration?

A Celebrant led ceremony will help you  
to create special memories of the day.

For more information please contact:

[janetterickwood\\_celebrant@btinternet.com](mailto:janetterickwood_celebrant@btinternet.com)

[www.janetterickwoodcelebrant.co.uk](http://www.janetterickwoodcelebrant.co.uk) ☎ 07889 375200

Facebook @JRCelebrant



# DISTRICT COUNCILLORS' REPORT

## JUNE 2019

By Cllr Lees and Cllr LeCount

✉ [Cllrlecount@uttlesford.gov.uk](mailto:Cllrlecount@uttlesford.gov.uk)

✉ [Cllrlees@uttlesford.gov.uk](mailto:Cllrlees@uttlesford.gov.uk)

☎ 07836 346717

☎ 816675



We are really looking forward to the Village Fete and The Jubilee Picnic this month and hope to see many of you there (quick plug for offers to help PLEASE). This Month we thought we would give an insight into a week for the Leader of the Council and what that can entail.

Petrina attended a District Council Network Conference in London, which addressed the proposed changes in Local Government (Levelling up) proposed by the Government. Here we met, Stuart Andrew MP, six weeks into his new role. It provided a good opportunity for members to ask searching questions; including on Right to Buy, planning policy and social housing.

Right to Buy is a scheme where existing tenants can buy their council house, the idea was that Councils would replace all houses bought by tenants to fill the gap. The difficulty here in Uttlesford is the cost of replacing those houses sold. As the cost-of-living increases and people are having to turn to private renting, we are considering asking the Government to help us address this issue. We are interested in our residents' thoughts on this matter. Please do contact us to discuss – contact details below.

At the conference we heard from Professor Colin Copus, Emeritus Professor of Local Politics, De Montfort University, Local Governance Research Unit & Visiting Professor, Ghent University, and Professor Alistair Jones, for the launch of the Bigger is Still Not Better report. There was an enthusiastic defence of smaller units of local government. We do not believe that changing the council structure to serve larger areas with a mayor, is necessarily good for residents and localism. Bigger is not always better.

A meeting with Princess Anne followed the conference, at Stansted College at the Airport. This visit was postponed two years ago due to the pandemic. The students were a credit to the college and the canapes from the catering students were superb (a real perk).

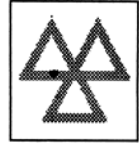
Uttlesford Parish Councils attended a meeting Chaired by the Leader the following evening, where the ECC Cabinet member for highways Cllr Scott addressed Highway Issues within the District. If you have any highway issues do contact us and Cllr Gooding of course.

A meeting at Essex followed to discuss how we can work together in place-based partnerships to help shape the agenda of integrated care systems to create the conditions for better quality of life and health outcomes followed.

***Continued on next page***

# **GARRETT'S** GARAGE SERVICES

42 Golds Business Park, Elsenham  
Bishop's Stortford, Herts CM22 6JX



- Mechanical Repairs
  - Servicing
  - Tyres
  - Engine Tuning
  - Computer Diagnosis
  - Windscreen Repairs
  - M.O.T.'s - Catalyst & Diesel Tested
  - E.H.D.C. - Authorised Hackney Carriage Testers
  - Batteries
  - Exhausts
- MODERN WELL MAINTAINED WORKSHOP*
- ALL MAKES OF VEHICLE*
- \*FREE COLLECTION AND\*  
\*DELIVERY SERVICE\**

**TEL: 01279 647777    FAX 01279 817622**

**01279 871 777 - 0800 587 2556**

6 Newman Road, Little Canfield, Dunmow, Essex, CM6 1GR

## **MEDIACOMS**

**Aerial Satellite AV Security**

- Aerial Installations
- CCTV & Security Alarms
- Audio Visual Installations
- Wireless & Wired Networks
- Solar Panel Installations
- Sky Installations & Subscriptions
- Freesat Installations & Receivers
- Multiroom Music & TV Distribution
- TV Wall Mounting Services
- Family Run Business



[www.mediacom.co.uk](http://www.mediacom.co.uk)

[info@mediacom.co.uk](mailto:info@mediacom.co.uk)

## DISTRICT COUNCILLORS' REPORT

### JUNE 2019—CONTINUED FROM PREVIOUS PAGE

The situation with Ukrainian refugees is fluid at the moment, as always, been impressed by the generosity and kindness of our ward's residents with the offers of help and support. Our website is constantly updating on the situation. <https://www.uttlesford.gov.uk/ukrainian-refugee-support>.

Our Community Safety Partnership team were out and about in the ward in April, knocking on doors and checking smoke alarms, if your door wasn't knocked upon – this is a gentle reminder to check your alarms are working.

At UDC we are delighted to have allocated more than £300,000 in local grants to the local volunteer sector for the 2022/23 tax year. The biggest recipients are the Uttlesford and East Herts Citizens Advice services with grants of over £160,000. They provide extensive, and significantly free, advice to residents about debt and money, benefits entitlement, housing, employment, family, and health matters – and much more. As we have seen through the last two years with the pandemic, UDC's financial grants to the local volunteer sector are an important part of providing necessary extra support to those residents in need – and in fact are a safety net for many. With the skyrocketing cost of living and squeeze on wallets, this year their services will be even more vital for more residents than ever. The grant allocation committee applaud and thank all the selfless work done by volunteers in the district for their fellow residents. There is a varied range of support in the district.

**Our 2022/23 Community Project Grant scheme is open again for new applications.** This scheme is open to properly constituted voluntary organisations or similar bodies in Uttlesford.

You can apply for a grant from a minimum of £100 up to a maximum of £3,500. See here <https://www.uttlesford.gov.uk/community-project-grant>

We continue to try and persuade colleagues at Essex to address the issues at North Hall Road, Henham and are nearing a resolution at Hall Road, Elsenham. I am delighted that we have managed to negotiate with Bloor Homes to provide enough space for a full-sized football pitch – so the adults of the village can be part of the success of the football club here.

Our Surgery will be on June 16<sup>th</sup> at 17.30 Elsenham.

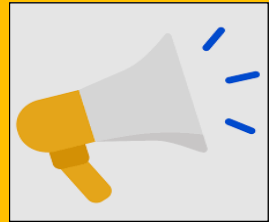
Feel free to visit and we are always available via the telephone or zoom.

# JOHN COLEBY

## Experienced Interior and Exterior Decorator

For a friendly, reliable service please telephone  
**01279 815510 or 0793 9070818**  
for a free estimate

Advertise your business in  
Elsenham News  
Contact us at  
[elsenhamsnews@hotmail.co.uk](mailto:elsenhamsnews@hotmail.co.uk)



## D BONNEY & SONS MANUDEN MOTOR VEHICLE ENGINEERS

MOT TESTING

ALL MAKES OF VEHICLES SERVICED INCLUDING FOUR WHEEL  
DRIVES

TRW BRAKE CENTRE

DIAGNOSTIC AND FAULT FINDING

WELDING AND CHASSIS REPAIRS

SELECTION OF USED CARS

CALOR GAS STOCKIST

WE HELP YOU THE MOTORIST WITH A CHEAPER LABOUR RATE

GUARANTEED WORKMANSHIP

FREE COLLECTION AND DELIVERY IN LOCAL AREA

**PLEASE RING: MALC, NEIL OR CRAIG**

**☎ 01279 813315 OR ☎ 01279 815946**

## DEVELOPMENT DEVELOPMENTS

By *Graham Mott* ☎ 812516 ✉ [motts@grahammott.plus.com](mailto:motts@grahammott.plus.com)



The detailed application by Bloor Homes to build up to 350 homes off Henham Road was considered by Uttlesford District Council's Planning Committee on 27 April. The Committee, encouraged by members of the District Council and Parish Council for the village, voted unanimously to defer a decision.

The Parish Council protested that insufficient time had been given to consider the 140 new documents with Bloor's revised application. Furthermore, there were more documents since then, including an astonishing 54 from Bloor stored on UDC's website just two days before the Planning Committee meeting.

The planning officer wanted to say that the 54 new documents were submitted following Essex Highways' late response. That seemed absurdly unlikely, given that Highways' response, as is usual with them just before determination, was to the effect that they withdrew all their previous objections. The Planning Manager said that even a change as small as an amendment to a window detail could generate vast quantities of new documents (although none of the changes was anything to do with windows). Furthermore, he continued, the planning officer would, of course, have checked through all the documents to ensure there was nothing of any consequence. But the officer did not say so herself, and it's quite possible that she did not even know they were there. The Parish Council representative was indignant at this late imposition, and some members of the Planning Committee were inclined to agree.

Some matters were resolved at a meeting held between the interested parties - Bloor, UDC Planning Manager, District Council, Parish Council, Elsenham Youth Football Club - shortly thereafter. The venue was the corner of a field - but not just any old corner of some random field, but the one nearest to the wholly unofficial gap in the hedge which enables walkers to gain access from Hailes Wood. Bloor agreed, if reluctantly, not to make this access part of their sales and marketing appeal. Agreement was reached on the details of football pitches and a pavilion, following a revised suggestion from Elsenham Youth Football Club.

The application will again be put before UDC Planning Committee on 25 May. The Parish Council is expected to continue to object on the grounds of amenity space for the flats and insufficient parking for both residents and visitors. The planning officer has now left - this application has swallowed officers in the way I eat toast for breakfast - but it can confidently be predicted that the Planning Manager will tell the Committee that if they don't agree this time, consequences will befall which will make the present 'designation' by Government feel like a mild slap on the wrist; and the Committee will probably roll over.

Details of the Local Plan are now expected to be revealed to an apprehensive populace at the end of May or start of June. We must be hopeful that Elsenham is not included this time, but every other parish in the district will be thinking the same.



## SDS Installations Ltd

AERIAL AND SATELLITE SERVICES  
FOREIGN SATELLITE SYSTEMS - CCTV - EXTRA TV POINTS - SKY LINK UPS  
PHONE POINTS - HOME SIGNAL DISTRIBUTION - WALL MOUNTED PLASMA/  
LCD SCREENS - CABLES SUPPLIED AND HIDDEN

Alan Smith  
50 Sunnyside  
Stansted  
Essex CM24 8AX

01279 279012  
07771 881042  
sdsinstallations@hotmail.com  
sdsinstallations.com

## Taylor Computer Services (Stansted)

On-site Computer Maintenance/Repairs

DON'T BE RESTRICTED TO OFFICE HOURS, I CAN VISIT YOUR HOME OR OFFICE DURING THE DAY, EVENINGS OR WEEKENDS AT A TIME TO SUIT YOU.

Email and Broadband Setup, Data Transfers/Data Recovery, Hardware & Software Installation, Virus & Spyware Removal & Protection, New PC Setup & Training

Call Derrick on 01279 816418 ~ 07926 289749  
Email: [Info@tcsstansted.co.uk](mailto:Info@tcsstansted.co.uk)

## DANIEL ROBINSON & SONS

Independent Family Funeral Directors & Monumental Masons

Est 1892

Always here when you need us...

- Arrangements in the comfort of your own home, if preferred
- Private Chapel of Rest
- Pre-paid funeral planning services
- Traditional & contemporary funerals to suit your wishes



79/81 South Street  
BISHOP'S STORTFORD  
01279 655477

[www.drobinson.co.uk](http://www.drobinson.co.uk)



# Welcome to The Elsenham Village Fete 2022!

## Saturday 18<sup>th</sup> June 1-4pm.

We cannot wait and it is going to be a real treat for everyone at this year's fete. We have tried to ensure that there is something for everyone, and we really hope you have a marvellous time!



The WI are organising our wonderful **Tea Tent** (in the Memorial Hall) and there will be a smorgasbord of utterly delicious cakes, savouries and thirst-quenching drinks. However, if you would like to bake something for them, please get in touch with Gill Hathaway who would be delighted to hear from you.



There will be the usual mouth-watering **barbeque**. Frankie is bringing his cooling **ice creams and donuts** and this year we have the Greek Street Café coming! **The Crown** are providing the **Beer Tent** and there are lots of stalls selling their homemade edible treats around the fete too!



There will be lots of **games** and **Tombolas** to play; **bouncy castles** to jump on, **coconuts** to be smashed, **circus skills** to be learnt, **cute animals** to be petted, **biscuits to be decorated** and much more. Young or old, you can come and have your **face painted** and look amazing! We will have a real live **Magician** roaming around the fete amazing and astounding folk!

Do start saving your pennies to bring as we will have superb **homemade dog accessories**, scrummy **jams and chutneys**, **hand crafted cards, bags, candles** and much more. There will also be **vintage clothing, handmade wooden creations, all sorts of books** and glorious **plants and flowers**. The list is endless!!



Come and see what the **Historical Society** have been up to, as well as **Guide Dogs for the Blind**, the **Tennis Club**, the **Bowls Club**, the **Post Office** and many more village organisations! If you're feeling a bit tense, you can go and take your frustrations out at the **plate smashing stall!!**



There will be even more **classic vehicles** this year and if you have one you would like to bring, then please just turn up with it before midday. Otherwise, just mosey down and chat to the owners.

The Arena attractions will be entertaining us throughout the afternoon with a variety of dancing, displays and the magnificent **Elsenham Community Choir** will be performing, so make sure you don't miss any of these.



If you have any questions or would like to participate, then please get in touch on 07962 586825 [elaine.terry2011@btinternet.com](mailto:elaine.terry2011@btinternet.com) or 07811 386027 [allanahathaway@sky.com](mailto:allanahathaway@sky.com).

Finally, a reminder that **dogs are not allowed** onto the playing field and please **walk, don't drive** – for everyone's safety there will only be parking spaces for stall holders, classic vehicle owners and disabled drivers.

**HERE'S TO A FABULOUS DAY FOR US ALL!**

See you on the day and let's hope the sun shines!



# Spellbrook Garden Design

## DRIVEWAY & GARDEN DESIGN

- ✓ Decorative Walling and Fencing
- ✓ Patios & Paths
- ✓ Block paving, Tarmac and Graveling
- ✓ Decking
- ✓ Turfing, Garden design and build
- ✓ Stone cleaning

[spellbrookgardendesign.simdif.com](http://spellbrookgardendesign.simdif.com)

Tel: 07799 603089 / 01279 503936 / 0800 696 5257

Westwoods, London Rd, Spellbrook CM23 4AH



## LOGS LOGS LOGS

- Well seasoned hard wood
- Transit load / bulk builder bag
- Cut to fire size

Call today ☎ 01279 718555

Or email ✉ [dar13@mail.com](mailto:dar13@mail.com)



## DECORATING SERVICES ALL ASPECTS OF DIY

NO JOB TOO SMALL

For a friendly reliable service  
Just Ask.....

**GARY KING**

Home : 01279 850001

Mobile : 07951 452602

[g.king962@btinternet.com](mailto:g.king962@btinternet.com)

# N.M.S

## Window Cleaning Service

Cobwebs removed, Windows,  
Frames and sills washed,  
doors cleaned as required.

Water fed pole system  
Traditional

07470291463

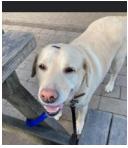


# ELSENHAM C. OF E. PRIMARY SCHOOL

By Linda Reid, Headteacher



The children of Elsenham C. of E. primary school have a new four-legged friend! Bo is a golden Labrador, retired guide dog for the



blind and now a happiness dog, who comes with her owner to spend time with some of our children. Bo got her name from the unusual birth mark she has on her head, shaped like a bow. She has been a big hit with everyone – not just the children – bringing smiles to all our faces. Bo has been introduced as part of our wider wellbeing programme and will be a regular visitor to our school. We enjoyed another visitor recently, musician Tabea Deus.

Dubbed “one of the most exciting young musicians in the early music world” by *Classic FM*, Tabea played a variety of music on the recorder for the children to enjoy. In conjunction with Saffron Hall, Saffron Walden, the children in Year 5 will work with their teachers and a music specialist to learn a short repertoire in order to come together for an interactive musical event with other local schools later this academic year.



---

## AID FOR ROMANIA

By Richard Peake ☎ 850374

The April lorry left on the 29<sup>th</sup> and hopefully has arrived safely as it now has to clear EU customs in Rotterdam. Our warehouse is empty and we are now collecting for the October lorry. Some of the goods will be given free to needy families in Mărășești (not far from the border with Ukraine) as nominated by the local Baptist church and others by the town mayor, with the better quality sold through our charity shop with proceeds helping the same poor sections of the population with health, education and improving their terrible housing conditions. We now want **winter** clothes & shoes for adults and children (under 3 years old and must be new). Single and Z beds with mattresses (sturdy iron or wooden framed beds are very desirable - no divans). Cushions, bed sheets, pillows, duvets & blankets (single & double), towels, toiletries (including loo rolls), umbrellas and rugs (no carpet offcuts). Building & workshop tools (also some types of gardening tools and sturdy wheelbarrows) and a sack barrow. Surplus school tables (must be 2ft clearance underneath i.e. not infant) & stackable adult size chairs (please ask any contact with a local school or village hall who are/maybe re-furbishing). Sturdy chest of drawers (not flat pack built as these do not survive the truck journey), bedside cabinets, kitchen/dining tables (either drop-leaf or removable legs). Irons & boards. Kitchen items (crocery, cutlery, utensils, pots/pans – especially big sizes e.g. preserving pans). Wheelchairs, crutches, walking sticks, zimmers. Bandages & dressings (*absolutely NO pills, medicines or creams*). Rucksacks & holdalls (must be in good condition). Costume jewellery. Footballs. Suitcases - but not the old ‘cardboard’ types. Ear defenders and high-viz vests/jackets. Small toys such as push-along cars, cuddly toys etc (no big toys as these cause much jealousy!). Christmas decorations and so forth. Cash donations for the cost of the lorry would be greatly appreciated, as it now costs more to send since we must now clear customs. If you have any of the above, please bring them around to 1 Hall Close, Henham during June. Please contact Richard Peake first on ' 850374 to arrange delivery.

June 2022



## Pike's Plumbing & Heating

Whether you're looking for a plumber or heating engineer, Pike's Plumbing & Heating can help.

If it's an emergency, simple problem or you're just thinking about a new boiler or bathroom give me a call – I'm available when you need me 24/7. Now's a good time to think about servicing your boiler too and make sure you're not left out in the cold! **No Call-Out Charges & Free Quotations**

**Tel: 07889 140035**

**Craig Pike**

**Email: [info@pikesph.co.uk](mailto:info@pikesph.co.uk)**



**Web: [www.pikesph.co.uk](http://www.pikesph.co.uk)**

## Saplings Nursery

*We are recruiting*

Early Years Practitioners

**Full & Part-time posts available**

Competitive Rates of pay  
Staff ratios met and exceeded  
Ongoing Professional Development

We offer a home from home environment,  
where children play to learn  
We use mixed educational approaches

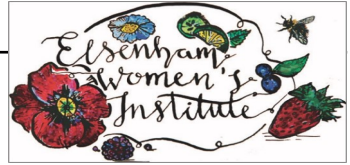
**CALL us on 01279 851998**

Saplings Nursery, Waltham Hall Cottage,  
Bambers Green Road, Takeley, CM22 6PF

# ELSENHAM WOMEN'S INSTITUTE

By Moyra Jackson ☎ 647351

Looking around Elsenham it is most definitely summer – at last! The gardens are all looking beautiful as they burst back into life.



Our last meeting (which I unfortunately missed having contracted covid-19) featured the excellent and very knowledgeable Nicholas Henderson drawing his series of talks on the wives of Henry VIII to its conclusion. A well attended meeting and my thanks go to Barbara Pether who chaired the meeting in my absence.

We are set to be extremely busy this month. We look forward to seeing lots of families at the 'Picnic in the Park' on Sunday 5<sup>th</sup> June to celebrate the Queen's Platinum Jubilee. Elsenham WI will be providing hot drinks from the Memorial Hall. Not wishing to tempt fate but the weather is looking perfect for a picnic! We will be back in the Memorial Hall on Saturday 18<sup>th</sup> for the Village Fete where it will be transformed into a fabulous Tearoom where drinks, cakes and cream teas will be available – weather permitting we will also have tables in the garden at the hall. The WI will also have a Stall at the Fete – not our usual tombola so watch out for something special. Come along and have a chat with us – we are always happy to chat.



Ladies who Lunch had an excellent outing to the Three Willows in Birchanger – the extensive menu on offer was enjoyed by all. The Cinema Club went to see the latest Downton Abbey film and our Bookworms are reading "The One Hundred Years of Lenni and Margot". I am delighted that Elsenham WI is so well fed and entertained!

Our June meeting is on Thursday 16 June and is "Simplistic Jewellery Making" with Sharon Gould that is sure to be a very popular topic. The competition continuing the theme of the meeting is your favourite item of jewellery.

An early notice for our July meeting "**A - Z of Roses with Simon White**". This will be the first 'Open Meeting' we have held in many years and this is open to all - including men! There will be our usual charge of £3 for all visitors and we look forward to having a full house.

*Details of our programme, events and activities can be found on Facebook, Twitter and Instagram – search for Elsenham WI. Visitors are welcome to our monthly meetings so please come along. We meet at 7.45pm on the third Thursday in the month in the Memorial Hall.*  
**Elsenham WI – There's a lot going on!**

# Options Hair Design and Hair Loss Clinic

An essential choice with a passion for hair

We welcome you with a complete in-depth consultation, whether this is for a change of style or colour or for more clinical advice on the health of your hair and scalp.

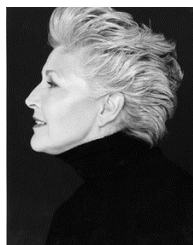
For clients visiting The Hair Loss Clinic we are able to offer a completely private consultation and treatment room away from the main salon. We offer proven treatments for hair loss and also provide a complete wig fitting and finishing service. We work closely with a leading UK Trichologist who holds regular clinics with our clients.

Our products are organic and formulated to enhance your hair health. Our dedicated stylists will work with you to achieve the look and feel that you want. Our salon has parking right outside and a warm welcome awaits you.

Elsenham Salon **01279 812665**

Bookings not always necessary

Hair Loss Clients please call Ann on  
07957 166436



[www.optionssalon.co.uk](http://www.optionssalon.co.uk)

## **S.E.P** **TREE CARE & GARDEN MAINTENANCE**

Tree Topping & Felling  
Pruning & Pollarding  
Hedges cut, Trimmed & Removed  
All waste Chipped & Removed  
Garden, Garage & Site Clearance  
Gravel Driveways & Paths  
Fencing

Turf Supplied & Laid  
Jet Washing Paths & Driveways

Local Tradesman

20 years experience

For a free estimate Phone

**07903 621657**

**08000 588057**

14 Day Cooling off Period

## Recital of Church Music

St Peter's, Ugley, Saturday, 25<sup>th</sup> of June 7.30pm.

**Sarah Rosewell** *Soprano*  
**Ian de Massini** *Organ*

O Ecclesia *van Bingen (1098-1179)*  
Salve Regina *Pergolesi (1710-1726)*  
Gloria *Handel (1685-1759)*  
Organ piece T.B.A.

Sarah and Ian are distinguished professional musicians who will provide a real treat.

***Admission: £10 in aid of St Peter's Fabric Fund***

*to be paid at the door.*

*(Cash, please, or cheque in favour of St Peter's Fabric Fund)*

Wine, soft drink, light refreshments in the interval included in admission cost. *If you are intending to come, it would help us if you could phone*

*Bob McKean on 01279 812263 after 7pm, so that we can have some idea of numbers.*



To celebrate the Queen's Platinum Jubilee we are having a Flowerpot Festival. Display your Jubilee Flowerpot for all to see from 1st June and then bring them to the Elsenham Village Fete on 18<sup>th</sup> June



How is your Flowerpot creation coming along? Will yours be a flowerpot man or a beautifully decorated flowerpot?

If you have no spare flowerpots Victoria at Berries, Station Road will put some out by her stall for you to help yourself!



---

## ELSENHAM FLOWER SHOW SOCIETY

By Sue Johnson ☎ 812704

✉ [susanjohnson09@hotmail.co.uk](mailto:susanjohnson09@hotmail.co.uk)



### ELSENHAM OPEN GARDENS SUNDAY 26th JUNE

**11.00 a.m.-5.00 p.m. (please note the longer opening hours)**

A treat for all in the village is our long-awaited Open Gardens Day. If you are relatively new to Elsenham, we hope this event will give you an opportunity to explore a bit more of our lovely village. You will need to pick up a leaflet at any one of the gardens which are opening. These will be marked with a yellow sign "GARDEN OPEN TODAY". Since we have a total of 12 gardens opening (in New Road, Station Road, De Mandeville Road, Park Road, Robin Hood Road, Gilbey Cottages, also Franklin Drive and Sant Close in Elsenham Vale), the gardens will now be open two hours longer than in previous years.. Tea will be served in Station Road in the front garden of Le Touquet and a toilet is available here as well, in case of need!

The price per adult is £3.00 (accompanied children are free) and you can pay at the first garden you visit. The programme will give you entry to all gardens. The programme includes a map showing the location of the gardens that are open. Look out for the **YELLOW SIGNS** along the way.

Proceeds from the Open Gardens will help with staging our Flower Show, which takes place at the Memorial Hall on the Playing Field on Saturday 20<sup>th</sup> August.

Finally, we would like to say a huge thank you to all who supported our plant sale last month.



Call for your free quote  
**07960 941 138**

**AREAS COVERED**

Elsenham  
Bishop's Stortford  
Harlow  
Cambridge  
and everywhere  
in between

**ELECTRICAL SERVICES**

- Installations
- Maintenance
- Fault-Finding
- New Consumer Units

contact@tdcelectrical.com    www.tdcelectrical.com

# BMH

## WINDOW CLEANING CHERRY PICKER HIRE

**(12.5M)**

**Window Cleaning**

**Gutter Cleaning**

**Commercial Window Cleaning**

**Excellent Rates**

**Professional & Trustworthy**

**Fully Insured**

**References on request**

**07852 722139**

*"Get rid of the grime with a Tony shine"*

## Luxury Toilet Hire (UK) Ltd



Whether you are arranging a wedding, private party or corporate event, let Luxury Toilet Hire (UK) Ltd provide you with the perfect toilet facility to make your occasion a memorable success.

Cesspit emptying also undertaken.

Tel: 01371 873003 or 01279 504638  
Email: [info@luxurytoilethire.co.uk](mailto:info@luxurytoilethire.co.uk)  
Web: [www.luxurytoilethireltd.co.uk](http://www.luxurytoilethireltd.co.uk)



We also hire out mobile fridge and freezer units.



Please contact us for a quote:

Tel: 01371 873003 or 01279 504638

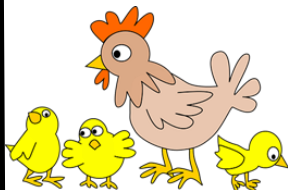
Email: [info@chillermatic.com](mailto:info@chillermatic.com)    Web: [www.chillermatic.com](http://www.chillermatic.com)

## HANDY MAN SERVICES

### NEW YEAR LOOK AROUND THE HOME

All decorating in any colours using Dulux paints. All new flooring installs any type light wood, dark wood and oak. Electrical new lighting LED, fittings, sockets, switches change to chrome/brass. Alterations to out houses, garages to extra room, dining room, office and many more.

**Call Dennis Free Quote  
07946 231302**



**Daisy May's Farm**  
Hall Road, Elsenham, CM22 6DN

The sun has been shining and our babies just keep on coming in all sorts of shapes and sizes, but what they all have in common is that they are soooooo cute!!

Our opening hours are:

Monday	9am-3pm
Tuesday	9am-3pm
Wednesday	Closed
Thursday	9am-3pm
Friday	9am-3pm
Saturday	10am-4pm
Sunday	Closed



On our open days, come and bottle feed the lambs and kid goats at 10.30am, 12.30pm or 2.30pm – they love it and you will too!

We are a working and community farm and are run solely by volunteers, as a not for profit organisation. The money we raise by you visiting us, makes sure our animals stay well fed and watered. So, in essence, this is a win win situation, you have a lovely time seeing our animals and as a direct result, we can afford to ensure they are all well looked after. Thank you!



If you have a child's birthday coming up, why not have your party with us at the farm? Also, if you arrange school trips, come and have a chat with us, we love having the school children here and they love coming here for an informative and fun day out!



There is so much going on at Daisy Mays' Farm, small animal enclosure, play area & ride on toys, Woodland Trail, arts and crafts, picnic area, Snack Shack..... do make sure you don't miss out. We really look forward to seeing you soon.

We **always** need help in so many ways, particularly when there is **so** much to do. So if you have a little time to spare, **please** get in touch, we would **love** to hear from you. Please contact ☎ 07747 787973 or take a look at our website 🌐 [www.daisymaysfarm.org](http://www.daisymaysfarm.org) to find out more. Thank you so much.

# ST MARY'S CHURCH ELSENHAM

Office@heuchurch.co.uk

At last, we have a new vicar! He is the Rev. Louis Wilson, of Denton, East Sussex, near Newhaven, for nearly 10 years now. The six Parish Representatives and the five from the wider Church, representing the Patrons, the Deanery and the Diocese, were unanimous that he should be offered the post, and all of us who have met him are very much looking forward to his arrival.

Louis is in his early 50s. He will be bringing his wife Jenny and their four children, of whom two are at university and the others at secondary school. He will be coming with a really solid basis of experience. After qualifying in Law, he spent 15 years as a solicitor before training for the ministry. Following that, he served for three years as curate in Evenlode Vale, a rural benefice in the Cotswolds, until 2012.

In Evenlode and Denton Louis has done much work with families and young people and the local community, and I believe that here, as there, he will try to get to know as many people as possible. He is a very good preacher and believes that sound Bible-based

teaching is essential to the health and growth of the local church. His ministry at Denton has particularly been marked by his emphasis on evangelism, including personally with individuals, and by the resultant growth in the size of the congregation there.

Louis has been called by God to lead us, and teach us in this great venture, and we must do what we can to support him and to respond positively to his leadership, "standing firm in one spirit with one mind striving side by side for the faith of the gospel." (Philippians 1.27) May Louis keep watch over our souls "with joy, and not groaning." (Hebrews 13.17)

Finally, let's not forget to pray for Louis and his family, as they go through the testing time of the move, and for his church at Denton as they set about seeking a new vicar – and let's not forget, either, that there are practical tasks that need to be done in preparation for the family's arrival. If you would like to help with one or more of these, please get in touch with Richard Peake – phone: 01279 850374.





# CHURCH EVENTS IN OUR VILLAGES JUNE 2022

## Church Services

### St Mary's, Elsenham 8.45am

Sun 5	BCP Holy Communion
Sun 12	BCP Morning Prayer
Sun 19	BCP Morning Prayer
Sun 26	BCP Morning Prayer

### St Peter's, Ugley 10.00am

Sun 5	Morning Service
Sun 12	Morning Service
Sun 19	BCP Holy Communion
Sun 26	Morning Service

### Elsenham Village Hall 10.15am

Sun 5	Holy Communion
Sun 12	Morning Service
Sun 19	Morning Service
Sun 26	Morning Service

### St Mary's, Henham 11.15am

Sun 5	Morning Service
Sun 12	Morning Service
Sun 19	Holy Communion
Sun 26	Morning Service

### St Mary's, Henham 6.00pm

Sun 5	<b>NO</b> Sunday@Six
Sun 12	Sunday@Six
Sun 19	Sunday@Six
Sun 26	Sunday@Six



CELEBRATE THE JUBILEE

ST MARY'S CHURCH HENHAM  
SUNDAY JUNE 5TH FROM 3PM

**Jubilee Thanksgiving Service  
and Celebration Tea  
Sunday 5<sup>th</sup> June 2022  
3.00pm at St Mary's, Henham**

Children's royal fancy dress competition and children's art competition (bring your drawings and paintings of Queen Elizabeth II to be displayed in our church).

Plus, flower festival and bell ringing.

*All welcome!*

## Other regular events

### SUNDAYS

#### SUNDAYS

#### St Peter's Junior Church

#### St. Peter's Church

10.00am Sundays: 12<sup>th</sup>, 19<sup>th</sup> & 26<sup>th</sup>

#### Elsenham Sunday Club/Explorers

(Y1-Y5) Old Franks, Elsenham

10.15am Sundays: 12<sup>th</sup>, 19<sup>th</sup> & 26<sup>th</sup>

#### Henham Sunday Club/Explorers

(Reception-Y5) Church Hall, Henham

11.00am Sundays: 12<sup>th</sup>, 19<sup>th</sup> & 26<sup>th</sup>

#### Pathfinders (Y6-Y9)

St Mary's, Henham 6.00pm - leave from service to meet in OSCA Sundays: 12<sup>th</sup>, 19<sup>th</sup> & 26<sup>th</sup>

#### Crammin' (Y10-Y13)

St Mary's, Henham 6.00pm followed by 6.45pm at the Church Hall, Henham Sundays: 12<sup>th</sup>, 19<sup>th</sup> & 26<sup>th</sup>

### MID-WEEK AND SATURDAY

#### Start the Week with Prayer

Church Hall, Henham 9.30am

Mondays: 6<sup>th</sup>, 13<sup>th</sup>, 20<sup>th</sup> & 27<sup>th</sup>

#### Benefice Prayer Supper

Church Hall, Henham 7.30pm

Mondays (4<sup>th</sup> of each month) 27<sup>th</sup>

#### Seekers After School Bible Club

(Y3-Y4) Old Franks, 3.15pm

Mondays: 6<sup>th</sup>, 13<sup>th</sup>, 20<sup>th</sup> & 27<sup>th</sup>

#### Christian Play (Y1-Y2)

Rowan House, Elsenham 3.15pm

Tuesdays: 7<sup>th</sup>, 14<sup>th</sup>, 21<sup>st</sup> & 28<sup>th</sup>

#### Little Fishes Pre-School Group

Church Hall, Henham 10.15am

Thursdays: 2<sup>nd</sup>, 9<sup>th</sup>, 16<sup>th</sup>, 23<sup>rd</sup> & 30<sup>th</sup>

#### Little Fishes Pre-School Group

Elsenham Memorial Hall 10.00am

Fridays: 3<sup>rd</sup>, 10<sup>th</sup>, 17<sup>th</sup> & 24<sup>th</sup>

#### Church Lunch Club

Elsenham Memorial Hall 12.30pm

Fridays (2<sup>nd</sup> & 4<sup>th</sup> of month): 10<sup>th</sup> & 24<sup>th</sup>

#### Afternoon Tea

OSCA, Henham 2.00pm

Saturday (3<sup>rd</sup> of month): 18<sup>th</sup>



- alun
- design
- consultancy
- architectural design
- planning
- project management
- interior design

Local architecture company with over 25 years experience designing and obtaining approval for new homes, extensions and conversions

Free consultation  
01799 540 600

[info@alundesign.com](mailto:info@alundesign.com)

[www.alundesign.com](http://www.alundesign.com)

Neville House, Station Road,  
Wendens Ambo, Saffron  
Walden, Essex, CB11 4LB

# BOSS

PROFESSIONAL CLEANING SERVICES

- ✦ Windows
- ✦ Conservatories
- ✦ UPVC Soffits & Fascias
- ✦ Gutters
- ✦ Patio & Driveway Cleaning

We're a family run business based in Herts & Essex with more than 20 years experience. We provide one-off or regular visits, it's up to you. Very friendly - No job too big or small

**Contact: Tony**

**Tel: 07977 970 371**

**Email: [tony@boss-cleaning.co.uk](mailto:tony@boss-cleaning.co.uk)**

**Website: [www.boss-cleaning.co.uk](http://www.boss-cleaning.co.uk)**



## NATURAL OUTLOOK ON SOME MIDSUMMER SPECIALS

By Heather Salvidge ☞ 814153

---



Things seem rather early this year but June should be the month when our wild roses appear. Locally there are several different species; dog rose, field rose and a downy rose. Dog roses have five pink petals and curved thorns, they get fairly tall on arching stems. The field rose has white petals which are less cupped than dog roses' and are more low growing unless it finds a shrub for support It too develops red hips. The downy rose is another pink one with 5 petals which have notches in each. Its leaflets are densely downy and its thorns are straighter than dog roses' are. All these have hips in varying shades of red after flowering which lasts till about August. It grows in patches in Alsa Street and on the winding part of Snakes Lane and also in other hedges and in woodlands though not so much in Alsa Wood.

As the leaves close over, woodland canopy gets denser and most of its flora dies back, but not the exotically named enchanters' nightshade. An inconspicuous plant, it gets up to 12–18" tall in dark corners and has tiny white flowers and elliptical leaves growing up its stem. It blooms from now until about August.

Much more showy are some of the local orchids; we even have some common spotted orchids in our garden 'inherited' from its past use. They take their name from the dark spots on their leaves, darker than those on the early purple orchids which flowered earlier this year in Alsa Wood, They vary on size from about 8-16" and the flowers which are borne in a pointed oval cluster on the stalk vary from pale pink to pale mauve or even white. They start about now and can go on till late July or longer. There are a few scattered patches in the Aubrey Buxton reserve and we hope there will be more than last year.

Bee orchids are shorter and take their name as they are said to look like the rear of a small bumble bee. It is thought that bees land on the flowers, realise their mistake and fly on to another and thereby pollinate it. There are four little groups on a grass patch in New Road by the back entrance to Hunters Court. There are more in the further disused sandpit accessed from the Henham Road. This is also where there is a good stand of pyramidal orchids in the top left hand corner. Their flower head is cone shaped and the flowers vary from pink to rather more purplish. Development work make it hard to see them this year but there are some more on one of the roundabouts on an internal airport road. Don't look if it's you driving!

So far this year I have not seen signs that the house martins are planning to take up residence in their old nest above the shops – maybe there was no soft mud around for the patch up process when needed so keep your fingers crossed in case they do return.

## **E. N.C. Electrical Limited**

**Industrial Agricultural Domestic**

**Electrical Installations**

**Fire Alarms/Emergency Lighting**

**Fault Finding**

**Portable Appliance Testing**

**Fixed Wiring Test & Inspection**

**Over 25 Years Experience in the  
Electrical Industry**

**Contact: Ian Arran**

**Tel. 01279 647042  
Mobile 07776 252994**



Email: enelectri-  
calltd@btinternet.com

**44 Alsa Gardens Elsenham**

**Bishop's Stortford Herts, CM22 6HB**

## **GLYNN'S CHIMNEY SWEEPS**

**Est. 1995**



**VACUUM AND  
BRUSH**

**NACS MEMBERS  
HETAS APPROVED**

**COMPETITIVELY PRICED**

**01279 424983**

**[www.glynnschimneysweeps.com](http://www.glynnschimneysweeps.com)**

**6 Oak Drive  
Elsenham  
CB22 6GB**



**Established  
in 2009**

**Friendly local Accountant  
Fixed fee Menu  
Monthly Packages to suit everyone**

**[www.sturgesonline.co.uk](http://www.sturgesonline.co.uk)**



**Call Roy now on:  
01279 817790**

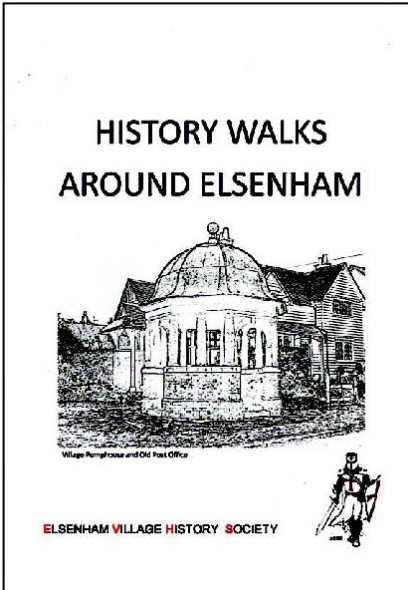
# ELSENHAM VILLAGE HISTORY SOCIETY

By Mike Rea, Secretary ☎ 813634 ✉ evhs12@hotmail.co.uk

🌐 www.elsenham-history.co.uk



As you read these notes, the Village Fete will be just a couple of weeks away and all being well we will be there to say hello to old and new friends. As well as presenting a display reflecting some aspect of Elsenham's past we will also have copies of our books there including our latest, albeit belated, offering.



Way back before lockdown I wrote that there is no better way to see the thatched cottages of Elsenham than to take a stroll around our village. *“To help guide you on your way the History Society has prepared an illustrated booklet of walks with a map and brief description of the most notable features of the village”*. As I wrote those words, the final editing was in hand and we subsequently launched the book at our meeting in March 2020. Well, we all know what happened then! So, some two years plus later we will be re-launching the book at our June meeting and we will be bringing, we hope, ample stocks to the Village Fete.

Oh, the good news, the book costs just two pounds! Armed with this book you can spend a pleasant summer's afternoon travelling in time through the village.

Perhaps start in the 12<sup>th</sup> century at St Mary's and come right up to date to the 21<sup>st</sup> century in our new estates maybe stopping off en-route at the 18<sup>th</sup> century Crown Inn for refreshment. Even if you don't fancy the walk, the book will offer you a glimpse of the rich history of Elsenham and is well worth a read.

At our next meeting on Wednesday 8<sup>th</sup> June (8pm in the Memorial Hall) we will be welcoming Anthony Tuck from the Newport Local History Group. He will be speaking about “Newport, A Great and Poor Town”, the story of our neighbour just a little way up the road.

EVHS membership costs just five pounds a year and allows admission to four meetings through the year which will all feature interesting speakers on a wide variety of subjects. If you are not sure whether this is for you, do remember that visitors are also very welcome to any of our meetings and pay just two pounds per evening. We look forward to seeing you there and at the Fete.



**T.J. Patmore**  
Building Services

- Extensions – Loft Conversions
- Roof work – Carpentry – Roof Tiling
- First and second fix carpentry
  - Kitchen fitting
  - Built in wardrobes
- Decorating interior and exterior
  - Floor and wall tiling
- Fencing – Decking – Patios
- Supply and fix u.p.v.c. windows
- House maintenance

*Call Trevor for friendly help, advice  
and FREE estimates*

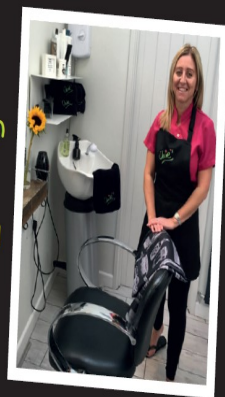
mob 07932 666224



*★ ★ ★  
Claire's*

*Gents hairstylist  
@ Rickling Green*

- ★ Appointments from  
7am Mon-Sat
- ★ FREE easy parking
- ★ Fully qualified  
& insured



**Call: 01799 542424**  
**Text: 07791 058406**



# TAKELEY IRONING & DRY CLEANING

**OPENING TIMES**  
**MONDAY - FRIDAY 8AM - 5PM**  
**SATURDAY 8AM TO 12PM**

## FREE LOCAL COLLECTION & DELIVERY TO YOUR DOOR

Takeley, Eisenham, Henham, Stansted, Felsted, Hatfield Broad Oak, Hatfield Heath, Sheering, Dunmow, Sawbridgeworth, Broxton, Spellbrook, Molehill Green, Broxton, Little Canfield.

- ✓ WASHING & IRONING
- ✓ IN HOUSE DRY CLEANING
- ✓ 48 HOUR SERVICE
- ✓ DUVETS
- ✓ CURTAINS
- ✓ ALTERATIONS
- ✓ WEDDING DRESSES

**The Centre, Dunmow Road (Behind Londis)**  
**Takeley, Bishops Stortford**  
**Herts, CM22 6SH**

Email: [takeleyironing@gmail.com](mailto:takeleyironing@gmail.com)  
[takeleydrycleaning@gmail.com](mailto:takeleydrycleaning@gmail.com)

**Tel: 01279 871245**

## SCOUTING NEWS

By Matt Morland (Akela) ☎ 07747 272706

✉ 1sthenhamandelsenham@gmail.com



Summer term has arrived with a jam-packed programme planned for our Beavers, Cubs and Scouts by our remarkable volunteer leaders at 1st Henham & Elsenham.

Our term started with a set of traditional events to celebrate the Patron Saint of Scouting, St George. Many of our members attended a St George's Day service at Henham Church followed by our Group parade of flags and renewal of our Scout



Promises on the village green at Henham. We had fantastic weather on the day which eventually morphed into an impromptu picnic with parents outside OSCA in the sunshine. We also took the opportunity to hold a collection to raise money for the Ukraine Crisis Appeal.

So far this term our Beavers have taken part in activities towards their Air Activities Badge by making paper aeroplanes and learning the phonetic alphabet, their Cyclist badge by learning safe riding and maintenance skills, and celebrated Earth Day by making edible dirt cups (sounds gross but, in reality, it's jelly with crushed Oreos and gummy worms so very popular with our youngest Scouts!). Cubs have been den building, practicing pitching tents in preparation for Mega Camp after half term, taken part in science experiments with water rockets to learn about propulsion, and hiked around Henham to learn about the local area. Scouts have had an evening of wide games in Alsa Woods including Capture the Flag and Cluedo, finished their DIY birthday cakes and used them to practice fire-lighting with flint strikers, and took part in the Chippy Hike to vote on the best chips in the area (Churchills in Stansted came in 1<sup>st</sup> by the tiniest of margins with Elsenham Fish Bar in 2<sup>nd</sup> place).

From the summer term we have also moved to our new home at Henham Village Hall, and we'd like to thank the team at Henham for making us so welcome. Our meeting days stay the same, but all Sections will now meet in Henham rather than being split across two locations. It will be sad to leave Elsenham Village Hall and we would like to give enormous thanks to the Elsenham Village Hall Committee for all their support in hosting 1<sup>st</sup> H&E Scout Group over the years.

And finally, as this article goes to press our Group is aware that we will be requiring a new Group Secretary. Please get in touch if you are interested in volunteering with our Group and would like to know more about this role.

Fiona Gardiner

SKIN & BEAUTY CLINIC  
ELENHAM



## Discover Skin Confidence

At Fiona Gardiner  
Skin and Beauty Clinic

AWARD WINNING  
SKIN THERAPIST 2021

- Cryopen Blemish Removal  
(Skin Tags, Warts, Sun Spots)
- Facial Rejuvenation
- Expert Laser Skin Treatments
- Clinicare Skin Peels & Facials
- Microdermabrasion & Dermaplane
- Botulinum Toxin Injections

SKIN SCANNING  
WITH  
OBSERV 320  
TECHNOLOGY

SKIN  
CONSULTATIONS  
JUST  
£25!

Elsenham, Essex  
07858482728

facebook @fionagardinerbeauty



## hpc (State Registered) Chiropodist

CH09088

Home Visiting Practice

Mrs. Julie Golden  
Est. 1994  
01279 873492

A professional service at a  
competitive rate

All types of double glazing repairs, maintenance & installations, including emergency callouts. At [replaceglaze.com](http://replaceglaze.com) we provide a reputable, family-run double glazing repair & installation service.

Our services include:

- Double glazing installations, repairs & maintenance
- Aluminium, composite & uPVC installations
- Windows & door handles
- Locks & hinges
- Misted units
- Patio door wheels
- Door adjustments & lubrication
- Aluminium bifolding doors
- Composite doors
- Aluminium/uPVC roof lanterns

01279 282997 01371 701000

[info@replaceglaze.com](mailto:info@replaceglaze.com) [www.replaceglaze.com](http://www.replaceglaze.com)

[replaceglaze](https://www.instagram.com/replaceglaze)





Stained glass has been with us for over a thousand years, traditionally used in windows of places of worship. The Hundred Parishes has some beautiful memorial windows, mostly from the 19th and early-20th centuries, but I would like to briefly describe a few examples that are more recent.

The Parish Church of St. Andrew in Much Hadham has a window on the west wall of the tower based on an etching by the renowned sculptor, Henry Moore. The window, depicting the Tree of Life, was created by Patrick Reyntiens and celebrates the joint use of the church by Church of England and Roman Catholic congregations.



In Little Easton, the parish church is dedicated to St. Mary the Virgin and has two stained glass windows in the north chapel that honour the American air crews of 386th Bomb Group (known as the Crusaders) who lost their lives in WWII. The windows are the Crusaders Window and the Window of Friendship and Peace.

Another window dedicated to American airmen can be found in St. Georges, Anstey. The Millennium Window records the names of all the men of 398th Bomb Group who died in WWII, etched onto butterflies.



In Broxted, 13th-century St. Mary's church has two modern stained-glass windows, the Hostage Windows. They were installed following the release in 1991 of three men: Terry Waite, Brian Keenan and local man John McCarthy. All had been held hostage in Lebanon for five years. One window is called the Window of Captivity and the other the Window of Freedom. They were designed by John Clarke and replaced two Victorian windows.

When you are out and about, I hope you will pause to look in our churches at the wonderful range of craftsmanship, some old and some not so old.

*The Hundred Parishes is 450 square miles of northwest Essex, northeast Hertfordshire and southern Cambridgeshire that is largely unspoilt and is richly endowed with many fine examples of agricultural and built heritage. The area has shared a common history which shaped and preserved its distinctive landscape of small and medium-sized farms linked by winding lanes and ancient rights of way to hamlets, villages and then to small market towns. For more information visit [www.hundredparishes.org.uk](http://www.hundredparishes.org.uk).*

# NEW BEGINNINGS COUNSELLING

A safe environment to explore your thoughts and feelings

A private practice with parking based in Takeley  
Represented by Michele Simpson MBACP

Ever felt sad, overwhelmed, lost or just not quite right?

Most people at some point in their lives have felt so overwhelmed that they find it impossible to see a way out of a situation

My beliefs are that everybody has the resources within themselves, given the right environment, to experience therapeutic change

Why not give me a call to see how I can help you to improve your life

Counselling could enable you to have that new beginning

phone: 07956 224954 or 01279 879009

email: [ms@newbeginningscounselling.co.uk](mailto:ms@newbeginningscounselling.co.uk)  
[www.newbeginningscounselling.co.uk](http://www.newbeginningscounselling.co.uk)

## S. PERRY CHAPEL END NURSERY

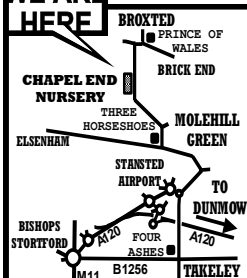
**HANGING BASKET & TUB PLANTS**  
**VEGETABLE PLANTS HERBS & BEDDING**  
**TREES, ROSES, SHRUBS, FRUIT BUSHES**

**DECORATIVE BARK**  
Water Softener Salt

**HORTICULTURAL GRIT**  
**COLOURED GRAVELS**  
**PEBBLES COBBLES**

**GODWIN'S**  
**MULTIPURPOSE COMPOST**  
60 Litre Bag  
**£6.50 EACH 3 For £17**

**WE ARE  
HERE**



**COUNTRY VALUE SEEDS**  
**Most 99p per PACKET**  
**Mr Fothergills Seeds**  
**Buy 5 Packs get Cheapest Free**

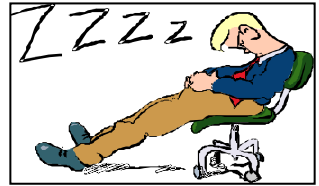
**OPEN 9am to 5 pm**  
**MONDAY TO SATURDAY (CLOSED SUNDAYS)**  
**MOLEHILL GREEN ROAD**  
**BROXTED DUNMOW ESSEX CM6 2BW**  
**01279 850771**

[www.chapelendnurserysperry.co.uk](http://www.chapelendnurserysperry.co.uk)

**VEGETABLE PLANTS**  
**BASKET & TUB PLANTS**  
**ALPINES**  
**HERBACEOUS**  
**HERBS**  
**ROSES**  
**SHRUBS**  
**POND PLANTS**  
**AQUATIC COMPOST**  
**GODWIN COMPOST**  
**WILD BIRD FOOD**  
**SUNDRIES**

# Ray's Reflections

Ray's Reflections



## DAYS GONE BY, “ON THE STREET(S) WHERE YOU LIVE.”

We moved to Elsenham in 1980 mainly because it was just about affordable for us to buy our first house in Oziers. Back then Elsenham probably had more fields than houses! Even Leigh Drive and The Croft didn't exist. The toy factory resided on Saunders Close and we could buy apples in the orchard! We also had a Police House on Station Road.

In 1982 Andy joined the Elsenham Cricket Club and I was roped in to help with the teas and the scoring. Many a summer afternoon at the weekend was spent listening to the sounds of 'how was that', The best part for me of course was 'apres' cricket spent in the Crown, with the landlords Ian and Barbara Good, drinking copious amounts of beer which was served from a jug. This was a perk for any cricketer who had scored 50 runs, taken 5 wickets or 3 catches, they had to buy a jug of beer! Not sure if that tradition continues today.

Later that year we moved to Elm Close and took on a couple of allotments next to the Church, where we were also married by the late Rev. Brian Green.

With all the produce grown we started to get involved with the Flower Show with lots of rivalry taking place between Andy, John Clayden and George Powell over the vegetable and flower trophies, and myself with Sue Johnson over the cooking trophy. This continued for a number of years in the 1990's until we got involved with the founding of the Bowls club.

Bowls can be pretty time consuming along with the social aspects of the club particularly on a Saturday evening with a glass of wine when the dulcet tones of Ray Franklin can be heard calling things like 'legs eleven' and 'two fat ladies' at Bingo! Unfortunately, he doesn't always call the right numbers!

Debbie and Andy Sales - First "Oziers" and then "Elm Close.."

Ray  
Franklin



The **Executives Choice Chauffeur Company** providing clients with premium transport at affordable prices. Airports, sporting events, theatre trips etc.

Corporate accounts welcomed.  
7 Seater available

To discuss your requirements

Contact Graham Anderson: [graham@execschoice.com](mailto:graham@execschoice.com)

Phone 07481 494988

[www.execschoice.com](http://www.execschoice.com)

## NEED A VENUE?

Elsenham Village Hall currently has availability on Wednesday, Thursday & Friday evenings.

Introductory rate for new bookings  
(half price for first 4 weeks).

**Email Annie at:**  
[elsenhavillagehall@gmail.com](mailto:elsenhavillagehall@gmail.com)

Peter Regelous, the speaker at our April meeting, held his audience in the palm of his hand. He appears to have had a life full of variety and interest; achieved without the formalities of planning or training, a serendipity of opportunity and the willingness to have a go. Somewhere along the line he must have worked hard because a career in musical and light entertainment was reached via shaping butter pats for Sainsburys, the Essex police and law courts (he was on the right side of the law of course). Peter did what he enjoyed, from solo spots in London pubs to working on many TV series that make up the hinterland of our entertainment memories. He has many a tale to tell about the programmes he worked on and the people he met along the way and he tells them kindly and with great humour.



On May 19th we had a return visit from Amanda Sutherland, an expert on fashionable costume styled from the last century. She brought examples to illustrate her talk and her travelling gift-shop of accessories was available to buy.

On June 15<sup>th</sup> we have a trip arranged to the Sevill Gardens with a river boat ride, lunch and tea. The following day at our meeting the Speaker will be Tim Moorey who has been a professional cryptic crossword setter for many years. He is an authority on spelling, meaning and usage and his talk 'Fun with English' promises to take us through aspects of our ever-growing language in a light-hearted interactive way. Restrictions on parking in St John's Road will be lifted for the period of the meeting (1.30pm – 4.00pm). Please do come along, meet old friends and make some new ones.

## Garden Hint

Now that houseplants are actively growing, pot any that have become rootbound into a container the next size up from their current size. Use a peat-free houseplant potting compost and watch your plant continue to grow healthily.



Advertise your business  
in Elsenham News  
Contact us at  
[elsenhamnews@hotmail.co.uk](mailto:elsenhamnews@hotmail.co.uk)

## **CHIROPODIST & PODIATRIST**

**Bishop's Stortford**

- Orthotics
- Diabetic Foot Care
- Saturday Clinics
- Routine Treatment

**R. Handford & Colleagues**  
H.C. P.C Registered

Bishop's Stortford - 16 Hockerill  
Street

**01279 652249**

[www.feet.org.uk](http://www.feet.org.uk)

# **YOUNG'S**

## **WINDOW CLEANING SERVICE**

We specialise in residential properties offering a quality  
and regular service for exterior and interior cleans  
Serving the Elsenham community for the last 10 years

**Call or text Malcolm for a FREE quote**  
**07817 481901**

# ELSENHAM TENNIS CLUB

By Petra Studholme ☎814667



## Our new season started – join ETC now

Despite a small increase year on year to cover essential maintenance on our facilities, ETC fees are still amongst the lowest in the area:

Adult - £70

Couple - £125

Family - £135

Student - £37.50

Senior - £42.50

Junior - £16

Non-playing – £10

We have floodlights that allow us to play until 10.30pm as well as regular club nights, competitive league play (including inter-club), ladies mornings and coaching (individual and group lessons). Court bookings are all online, you will get your own key and we will show you how to operate the lights via tokens you can purchase from us. To find out more, visit our website, or you can get in touch via Facebook or [mail@elsenhامتennisclub.co.uk](mailto:mail@elsenhامتennisclub.co.uk).

## Free play during Elsenham Village Fete

We will open our courts during the Village Fete. Minors under 12 must be supervised by an adult whilst playing and we ask everyone to wear appropriate non-marking footwear to be able to play. Rackets and balls will be provided. Just stop by the courts and have a go!

## Hire our courts – open to non-members

Try before you join – why not hire our courts to play with friends and family - £2 per adult, £1 for students and 50p for under 18s. You can email us or message on Facebook for availabilities, but please if possible give us 24hrs notice as we need to arrange to open the courts for you.

## Sunday afternoon 2pm – 4pm, club nights Tuesday evenings 7.30pm onwards

Fun times, doubles play for our members is going strong, another reason to join the club. Our club nights are also well attended with various levels of abilities and ages, so don't be shy.

## Beginners and rusty rackets lessons, cardio, individual and group lessons

Steve, our head coach, is starting his new beginners and rusty rackets course. He also runs cardio tennis twice a week and individual and group lessons are also offered.

To find out more, get in touch with him via email: [stevesmith865@hotmail.com](mailto:stevesmith865@hotmail.com) or call/ text 07790 561 817.

## Mixed and Men's teams entered into the ESC Summer 2022 League

Our men's team has been promoted to the highest division, our mixed is starting out this summer so division 3. Good luck teams and have fun!

### WEEKLY SCHEDULE:

Tuesday evening – 6.30pm cardio tennis

Tuesday evening – 7.30pm club night

Wednesday morning – 10am ladies' morning

Thursday evening – 6.30pm group coaching

Thursday evening – 7.30pm cardio tennis

Friday morning – 10am ladies' morning

Sunday afternoon – 2pm leisure play

# MASKALLS TREE SURGERY

Small family business

# Big expertise in trees

Call George

M: 07982 601 570 | T: 01279 819 127

email: [george@maskalls.co.uk](mailto:george@maskalls.co.uk)

[www.maskalls.co.uk](http://www.maskalls.co.uk)



All types of tree care & hedge cutting undertaken.  
Call for a free estimate.



Double Glazed Units – SAME DAY

- Table Tops
- Shelves
- Emergency Glazing
- Replacement Misted Double Glazing
- Greenhouse Glass
- Cat and Dog Flaps Fitted
- Splash Backs – Any Colour
- Glass Cut To Size
- Emergency Boarding
- Safety Glass
- Mirrors

**LOCAL COMPANY – GREAT PRICES – RELIABLE  
PROMPT SERVICE**

**Elsenham – Great Dunmow – Bishops Stortford - Stansted**





# NEIGHBOURHOOD WATCH

By Frances Lambert ☎ 07771 728332



**Kerry Rowson PC42003574**

Kerry.rowson@essex.police.uk

Throughout the summer we will be launching a new project called 'Policing our Parishes'. We would like to work alongside Parish Councils and partner agencies to attend a local area and carry out foot patrols, door knocking, school visits and speed checks, reaching as many residents as possible.

During the month of June, we will be in the locations detailed below where local police officers will be on hand to meet with you. This could be a short patrol to point out any hotspots, meeting in an area that residents have highlighted as a speeding issue or just a quick hello before we set off into the Parish. Please note that officers will be in the areas below on the given dates. Please contact the officer listed below if you would like to meet with them.

Monday 20 <sup>th</sup>	Elsenham	PCSO Stewart <a href="mailto:alexander.stewart@essex.police.uk">alexander.stewart@essex.police.uk</a>
Tuesday 28 <sup>th</sup>	Henham	PCSO Stewart <a href="mailto:alexander.stewart@essex.police.uk">alexander.stewart@essex.police.uk</a>

The Community Policing Team can also be contacted at:

North Local Policing Area  
Essex Police  
Saffron Walden Police Station  
Council Offices, London Road,  
Saffron Walden CB11 4ER

If you have any information regarding incidents contact Essex Police on '101 or Crimestoppers anonymously on '0800 555 111.

## “SPEED CAN KILL”

How can **YOU HELP**

Join the **Elsenham Community Speed Watch Team**. This is a good opportunity for Elsenham residents to increase road safety in the village, and reduce road collisions and injuries. Our village is becoming a race track.

**Talk is not enough – Your action is required**




To become part of this major village speed initiative we need more volunteers for the **“Elsenham Speed Watch Team”**. Full initial training will be given by Essex Police and then just a few hours a month operationally and when you are available

**There is NO weekly or monthly commitment**

**Are you interested?** Or need more information then Contact:

Frances Lambert ☎07771 728 332

  
**Naomi**  
**Gardening & Design**  
*Creating outdoor spaces for living*

-  Garden maintenance & advice
-  Garden design & consultation
-  Bespoke planting designs

Call for a free estimate

M: 07778 620576

E: [Naomi@NaomiGardenDesign.co.uk](mailto:Naomi@NaomiGardenDesign.co.uk)

W: [www.NaomiGardeningandDesign.co.uk](http://www.NaomiGardeningandDesign.co.uk)

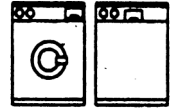
*Trained at Capel Manor College*

**ANGLIA**   
**ELECTRICS**

Established 1972  
Domestic Appliance Repair Service

We offer Specialist Dishwasher,  
Refrigeration & Cooker Service, in addition  
to our long established and renowned  
Washing Machine Service

Our Engineers are  
Experienced and  
Trained to service  
most makes



**01279 658767**

**Friendly Prompt Service**

**Do-It-4U**  
**Repair, Care & Maintenance**  
For your Home and Garden

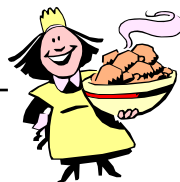
- ◆ **Plumbing, Electrical & Carpentry Services**
- ◆ **Drain Blockages Cleared**
- ◆ **Gutters Cleaned, Repaired or Replaced**
- ◆ **Gardens Tidied & Maintained**
- ◆ **Hedges & Topiary Trimmed & Shaped**
- ◆ **Fences Erected & Repaired**
- ◆ **Sheds & Other Sectional Buildings Erected**

**Telephone**  
**01279 814411**  
**Mobile**  
**07774 877320**

## COOKERY CORNER

By Sue Johnson 📞 812704

---



This recipe may seem a bit complicated, but well worth the effort!

**RASPBERRY LEMON MERINGUE PIE** (serves 8-10)  
500g shortcrust pastry block (or make your own)

### For the curd:

**5oz (150g) raspberries, mashed to a pulp**  
**2 lemons, zest and juice**  
**2 tablespoons cornflour**  
**3½oz (100g) unsalted butter, cut into cubes**  
**5oz (150g) caster sugar**  
**2 eggs**  
**4 egg yolks**

### For the meringue:

**4 egg whites**  
**7oz (200g) caster sugar**  
**2 teaspoons cornflour**

Pre-heat the oven to 200°C/fan 180°C/gas mark 6. Roll out the pastry to line a 9-inch (23cm) loose-bottomed tart tin. Prick the base all over with a fork. Line the pastry with baking parchment, fill with baking beans and bake on a tray for 5 minutes. Remove the paper and beans. Bake a further 10 minutes until crisp. Leave to cool.

Turn the oven down to 170°C/fan 150°C/gas mark 3 ready to bake the pie.

Meanwhile, make the curd. Put the raspberries in a measuring jug with the lemon juice, making up with a little water, until mix measures 8fl oz (240ml). Pass mixture through a sieve into a non-stick pan, reserving 2 tablespoons to mix with the cornflour. Add this to the pan along with the lemon zest, butter and sugar. Stir over a low heat until the sugar has dissolved, and the butter melted (3-5 minutes). Whisk the whole eggs and yolks together in a bowl, then over a very low heat, slowly add to the berry mixture. Once incorporated, increase the heat and cook stirring constantly, for 5-8 minutes until thick. Set aside.

Make the meringue by whisking the egg whites to soft peaks in a large clean bowl. Add the sugar, one tablespoon at a time, whisking constantly. Finally, add the cornflour and whisk until the mixture is shiny and stiff.

Once the pastry case has cooled, fill with the curd. Spoon half the meringue on top, spreading it flat with a palette knife, ensuring you push the meringue right into the edges, so they are sealed. Spread over the remaining meringue and make some swirls with the back of a spoon.

Bake in cool oven for 20 minutes, until the meringue is golden and crisp. Leave to rest in the tin for 30 minutes. Transfer to a cooling rack and leave for a further 30 minutes before serving.

# “SPEED CAN KILL”

How can YOU HELP

Join the

## *Elsenham Community Speed Watch Team*

This is a good opportunity for Elsenham residents to increase road safety in the village, and reduce road collisions and injuries

Our village is becoming a race track

**Talk is not enough – Your action is required**

To become part of this major village speed initiative we need more volunteers for the

## “Elsenham Speed Watch Team”

Full initial training will be given by Essex Police

And then just a few hours a month operationally

When you are available

**There is NO weekly or monthly commitment**

**Are you interested? Or need more information**

Contact Call – Frances Lambert 07771 728 332

## From The Parish Registers

### Burial of Ashes:

#### Baptisms:

On 1 May 2022 at Elsenham Village Hall, Heidi Elsa Kempe.

On 8 May 2022 at Elsenham Village Hall, Charlie George Simmonds.

#### Funerals:

Service of Thanksgiving on 13 May 2022 at Ugley Church, Maureen Joan Felstead, formerly of Bedwell Road, Ugley.

Service of Thanksgiving on 14 May 2022 at Henham Church, Amanda Louise Shaw, formerly of Vernon's Close, Henham.

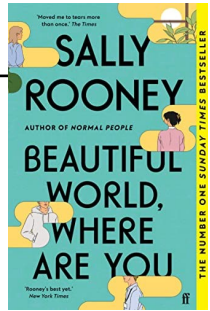
#### Burial of Ashes:

On 16 May 2022 at Elsenham Churchyard, Stephen Lodge.

Church Office	01279 814285	Anna Hicks
Church e-mail address		<a href="mailto:office@heuchurch.co.uk">office@heuchurch.co.uk</a>
Church web-site address		<a href="http://www.heuchurch.co.uk">www.heuchurch.co.uk</a>

Enquiries about thanksgivings, baptisms, weddings and funerals should be made in the first instance to Anna Hicks at the Church Office 01279 814285.

**BEAUTIFUL WORLD, WHERE ARE YOU?** by Sally Rooney  
Reviewed by Marion Giles for Elsenham Book Group



*'Alice, a novelist, meets Felix, who works in a warehouse, and asks him if he'd like to travel to Rome with her. In Dublin, her best friend Eileen is getting over a break-up and slips back into flirting with Simon, a man she has known since childhood.'*

*Alice, Felix, Eileen and Simon are still young - but life is catching up with them. They desire each other, they delude each other, they get together, they break apart. They worry about sex and friendship and the world they live in. Are they standing in the last lighted room before the darkness, bearing witness to something? Will they find a way to believe in a beautiful world? ... ' So says the blurb on the back of the book.*

**'Written with immense skill and illuminated by an endlessly incisive intelligence.'** – *Irish Times*

This was the choice of the book group this month. It is fair to say we were unanimous in our dislike for this book and couldn't disagree more with the *Irish Times*.

A couple of us who had read *Normal People* and a few had watched and loved the TV adaptation. However, this is a very different thing. It is as if previous success has given the publishers permission to push out any old rubbish. I expect many people will defend her writing because of *Normal People's* success and because she is 'on trend'. The lack of speech marks is very annoying and it is not clear if this is meant to be hip or because the author/editor doesn't understand punctuation.

The characters seem to spend their lives unable to make any meaningful decisions. Otherwise, they seem to be arguing about the nature of beauty, Catholicism, Bronze Age settlements (!) amongst other topics in the form of emails back and forth between Alice and Eileen. It is as if Sally Rooney had loads of stuff hanging around and shoved these in the book as a mechanism to express views. However, these seem to be irrelevant to the people or the story. The characters are flawed, as are many of us, but they are extremely irritating and unlikeable, not quirky, which was perhaps the intention. They speculate about doomed humanity like teenagers, though they are supposed to be grown-ups, which explains explicit sex scenes. These don't add anything and some people just skipped over those with a yawn.

Some people in the group did not finish (DNF). This book is lacklustre in every sense of the word. It is tedious and meandering.

The, probably inevitable, TV adaptation will have to work very hard not to be extremely boring.

# Editorial Information

## Articles

The **last day** for editors to receive articles, advertising and letters, which must contain the author's name and address (which may be withheld), is the 12<sup>th</sup> of each month.

Articles should ideally consist of a half page of A5 or a full page of A5. Articles over these sizes or letters containing more than 500 words may be edited depending on space.

**Copy submitted after the 12<sup>th</sup> may not be accepted but will, if deemed appropriate, be held over to the next month.** We are happy to receive hand written articles which ideally should reach us earlier than the 12<sup>th</sup> to allow for scanning etc.

**Dates for the Diary** must include date, event, venue and time.

**Please submit all articles, adverts, letters and queries to the editorial team at:**  
**[elsenhamnews@hotmail.co.uk](mailto:elsenhamnews@hotmail.co.uk)**

## General Notes

Whilst every effort is made to ensure that information is correct, the editorial team cannot be held responsible for any inconvenience caused through errors or omissions.

The views expressed within this magazine are not necessarily the views of the editorial team or Elsenham Community Association (ECA).

The editors and the ECA can accept no responsibility for the goods or services advertised in the magazine. Advertisements are included in good faith. The editors reserve the right to allow replies to letters/articles to be made in the same edition when appropriate.

**The editors' decision is final.**

**Wanted/For Sale items:** individuals may submit short details of items wanted or for sale etc at no charge. These will only be included in the next available issue if there is magazine space and subject to acceptance by the editors. We cannot guarantee to include any small ad.

## Subscriptions

*Elsenham News* is available by email (on a pdf) at no charge, or through the post at a cost of £13 per annum. Contact **[elsenhamnews@hotmail.co.uk](mailto:elsenhamnews@hotmail.co.uk)**

## Advertising

The costs are as follows:

	Single Insertion	Annual Cost (11 issues)
Half Page	£20.00	£190.00
Quarter Page	£10.00	£100.00
Inside Page	£50.00	n/a
Back Page	£75.00	n/a

**Village organisations** attract reduced rates, £5 for ¼ page. Half and full-page adverts attract full rates.

## To place an advertisement:

For any queries, contact Nathalie. Please send your advert as Word or Publisher via email to **[elsenhamnews@hotmail.co.uk](mailto:elsenhamnews@hotmail.co.uk)**

**Advertising Editor: Nathalie Kosorin**

## Business Advertising

Cheques should be made payable to "Elsenham Community Association".

**Editorial Team:**  
**Gary Williams**  
**Emma Bailey**  
**Patricia Davis**  
**Anne White**  
**Kirstie Waite**  
**Nyaradzo Chabata**

**Previous issues of Elsenham News are available on the ECA Website**

[www.ElsenhamCommunityAssociation.org.uk](http://www.ElsenhamCommunityAssociation.org.uk)

## VILLAGE CONTACTS

Airport Roadside Parking		0800 731 2385
Beavers	1sthenhamandelsenham@gmail.com	
Bowls Club	Jean Platt	816151
Brownies	elsenhambrownies@outlook.com	
Church Office (Old Franks, High St, Elsenham)	Anna Hicks	814285
County Councillor (Stansted)	Ray Gooding	813103
Cricket Club	David Brown	831011
Cub Scouts	1sthenhamandelsenham@gmail.com	
ECA (Chairman)	Allan Hathaway	813385
ECA (Secretary)	Moyra Jackson	647351
ECA Website	www.ElsenhamCommunityAssociation.org.uk	
Elsenham Surgery	www.elsenhamsurgery.nhs.uk	814730
Elsenham C of E Primary School	Linda Todd Headteacher	813198
Elsenham Church PCC Secretary	David Hill	812397
Elsenham Rights of Way website	www.e-voice.org.uk/erowos/	
Friends of Elsenham School (FOES)	Gemma Mills	07745 036066
Guides elsenhamguides@gmail.com	Gemma Schafer	07792 572423
Henham & District Garden Society	Moyra Jackson	647351
History Society	Mike Rea evhs12@hotmail.co.uk	813634
Member of Parliament	Kemi Badenoch	0207 219 5214
Memorial Hall Bookings	Cheryl Rae	817834
Neighbourhood Watch Co-ordinator	Frances Lambert	07771 728332
	franceslambertnhw@btinternet.com	
Parish Clerk - Louise Johnson	louise.epc@gmail.com	07456 791727
Elsenham Parish Council Website	<a href="http://www.elsenham-pc.gov.uk">www.elsenham-pc.gov.uk</a>	
Police		101
Post Office		812175
Rainbows	elsenhamrainbows@outlook.com	
Scouts	1sthenhamandelsenham@gmail.com	
St Mary's Fabric Fund	Elizabeth Barker	813543
Tennis Club	Petra Studholme	814667
Tots & Toddlers	Dawn Temple	814406
Uttlesford District Councillors	Petrina Lees	816675
(for Elsenham & Henham)	Garry LeCount	07836 346717
Village Hall Bookings	Annie Gleeson	07809 490731
Village Hall email address	elsenhamvillagehall@gmail.com	647729
Womens Institute Secretary	Gill Hathaway	813385
Wl website	www.elsenhamwi.co.uk	
Youth Football Club (Chairman)	Paul Jarvis	07786 933280

*If you would like your village organisation contact to appear regularly in the magazine, please contact one of the editors, see opposite for details.*

## UPCOMING EVENTS

Village Fete—Saturday 18 June

Open Gardens - Sunday 26 June

Flower Show - Saturday 20 August



Welcome to our  
Farm Shop & Tearoom  
The Barn, Pledgdon Hall, Henham,  
Bishops Stortford, CM22 6BJ

If you would like to order from us or book a table, please call us on 01279 248 201 or email [orders@cliffords.info](mailto:orders@cliffords.info)

Open Monday to Saturday 9.00 to 17.00 (CLOSED TUESDAYS), Sundays 9.00 to 16.00, Pig Sty Tearoom open 9.00 to 15.30



### About our Farm Shop

We stock a vast array of produce.

Fresh fruit and vegetables sourced from New Spitalfields Market, local meats and poultry from Priors Hall, bread and cakes from The Brown Bread Co. & beers and spirits from local microbreweries & distilleries. Foods and drinks from around the world & a large gluten free range and many vegan items.



Open Monday to Saturday 9.00 to 17.00 (CLOSED TUESDAYS), Sundays 9.00 to 16.00, Pig Sty Tearoom open 9.00 to 15.30

### Pig Sty Tearoom

All Day Breakfasts & Lunch with both Full Size "Pig Sty" meals as well as smaller "Piglet" size servings and for the youngest among us a "Baby Piglet" menu.

Sunday Lunches with 2 meat choices and a veggie choice every week, including homemade desserts.

Our Afternoon and Cream Teas are fast becoming legendary, freshly made Sandwiches, Scones & both Home Made Cakes and Belguite Patisserie.



If you would like to order from us or book a table, please call us on 01279 248 201 or email [orders@cliffords.info](mailto:orders@cliffords.info)