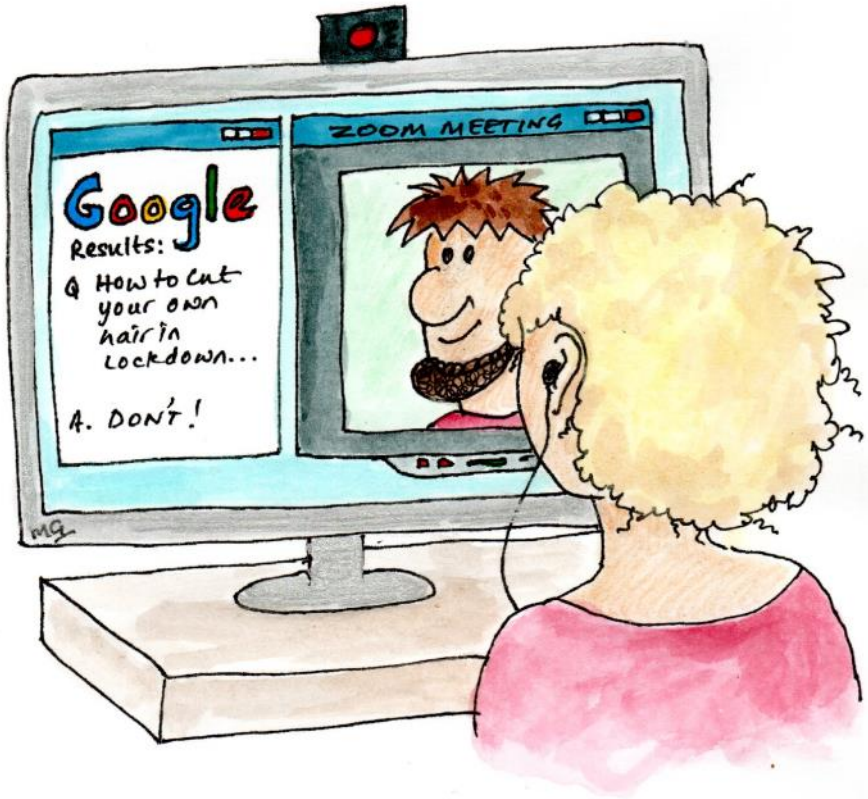


Elsenham News



STAY ALERT AND AT
HOME IF YOU CAN

SAVE LIVES

elsenhamsnews@hotmail.co.uk

June 2020

75p where sold

Please note that following government advice regarding Covid-19, all regular activities that would normally take place in the Memorial Hall, playing field or the Village Hall have been cancelled until further notice.

The following specific events have been cancelled:

- June 6 Village Fete
- June 10 Village History Meeting and talk
- June 20/21 Vintage Toy and Doll Display
- June 28 Henham School Fun Run and Fete

The following groups or activities are suspended until further notice: **General cancellations include:**

Beavers
Brownies
Community Choir
Cubs
Football
Guides
Kick Boxing
Little Fishes
Life Drawing
Line Dance
Nordic Walking
Rainbows
Shape to the beat
Slimming World
Tots & Toddlers
Yoga
Zumba

All Bowls & Social Club events
All church services and special events
Church Lunch Club
Elsenham & Stansted Hall Cricket
Club training & fixtures
Elsenham Tennis Club activities
Mobile library visits
Tots and Toddlers
U3A events
Village Café, tea, coffee and lunch
WI events

Parish Council meetings are being held by Zoom. The next meeting is on 1 June. Contact Louise Johnson for information by email on [✉ louise.epc@gmail.com](mailto:louise.epc@gmail.com)

Daisy May's Farm and the Crown remain closed



We're still in lockdown and maybe heading out of it? We hope you are all still safe and well.

Don't forget the Elsenham Good Neighbours Network which aims to help those who are self-isolating or working on the front line. Thank you to everyone involved. See p5 for how to ask for help, or how to volunteer. Uttlesford Food Bank is receiving an extremely high number of requests for support, see how you can help on p13.

Good news – Golf World Stansted has re-opened

You can play Golf, Footgolf and Adventure Golf, but this must be either as:

- Individuals playing golf on their own.
- Two people comprising individuals from different households
- Members of the same household playing as a two, three or four.

There are social distancing rules in place for booking and paying. Hot and cold drinks, snacks and a limited menu are available for takeaway. Opening hours will be from 7am – 9pm on weekdays and 7am – 8pm at weekends.

If you have anything you would like to contribute to the magazine – letters, articles, photos – please get in touch, elsenhamnews@hotmail.co.uk, it would be great to hear from you. Stay well.

The Editors

We are continuing to produce Elsenham News in PDF format only. It's available via the Henham & Elsenham Facebook group and the Elsenham Community Association website. We can email it to anyone who requests it via elsenhamnews@hotmail.co.uk. We are still running adverts from our regular advertisers to keep them visible to the local community; where you can, now or in the future, please support local businesses.

Regular features

100 Parishes	11	Development Developments	33
Book Review	27	History Society	19
Bowls & Social Club	39	Natural Outlook	17
Church letter	23	Ray's Reflections	15
Cookery Corner	41	U3A	31
Cricket Club	37	Women's Institute	21

E. N.C. Electrical Limited

Industrial Agricultural Domestic

Electrical Installations

Fire Alarms/Emergency Lighting

Fault Finding

Portable Appliance Testing

Fixed Wiring Test & Inspection

Over 25 Years Experience in the
Electrical Industry

Contact: Ian Arran

Tel. 01279 647042
Mobile 07776 252994



Email: encelectricaltd@btinternet.com

44 Alsa Gardens Elsenham

Bishop's Stortford Herts, CM22 6HB

Luxury Toilet Hire (UK) Ltd



Whether you are arranging a wedding, private party or corporate event, let Luxury Toilet Hire (UK) Ltd provide you with the perfect toilet facility to make your occasion a memorable success.

Cesspit emptying also undertaken.

Tel: 01371 873003 or 01279 504638

Email: info@luxurytoilethire.co.uk

Web: www.luxurytoilethireltd.co.uk



We also hire out mobile fridge and freezer units.



Please contact us for a quote:

Tel: 01371 873003 or 01279 504638

Email: info@chillermatic.com Web: www.chillermatic.com



BARLEY GROVE

FINANCIAL SOLUTIONS LIMITED

- * Annual Accounts/Book-keeping
- * Payroll
- * Corporate Tax returns
- * Self-Assessment Tax
- * VAT Returns
- * New Business Set up
- * IR 35 advice
- * Construction Industry Scheme (CIS)
- * Making Tax Digital Advice

A PROFESSIONAL AND TAILORED SERVICE TO MEET YOUR PERSONAL
OR COMPANY NEEDS

LOCAL COMPANY

CONTACT US NOW FOR AN INFORMAL DISCUSSION

Tel : 0330 133 0246

Email: info@barleygrove.co.uk

Website : www.barleygrove.co.uk



Elsenham Good Neighbours Network

If you are self-isolating or working on the front line, we are happy to help and try to ease your isolation



Each area of Elsenham now has an EGNN team of lovely volunteers who will be happy to assist.

✉ elsenhambtinternet.com (subject EGNN)
or contact Cllr Petrina Lees on ☎ 07713 074656
or Allan Hathaway on ☎ 07811 386027
to be put in contact with your local team.

Due to the contagious nature of the virus, we cannot pop in for a chat, and all deliveries/collections can only be left on the doorstep.



1066 ADVENTURE GOLF | FOOTGOLF |
9 HOLE COURSE | DRIVING RANGE |
PLUS TAKEAWAY FOOD!

NOW OPEN!!
Everyone Welcome!

Golf World Stansted, Hall Road, Nr Stansted Airport, Essex
CM22 6FL | 01279 812 865 | leanne@golfworldstansted.co.uk
www.golfworldstansted.co.uk



Lawn Treatment Service

Fed up with moss and weeds?

- I offer:
- Regular lawn feeds
 - Weed treatment
 - Moss treatment
 - Aeration
 - Scarification

CALL ANDREW NOW FOR A FREE LAWN SURVEY
on 07791 128399 or visit my website
www.simplylawns.co.uk

Local Business. Friendly, professional service

Taylor Computer Services (Stansted)

On-site Computer Maintenance/Repairs

DON'T BE RESTRICTED TO OFFICE HOURS, I CAN VISIT YOUR HOME OR OFFICE
DURING THE DAY, EVENINGS OR WEEKENDS AT A TIME TO SUIT YOU.

Email and Broadband Setup, Data Transfers/Data Recovery, Hardware & Software
Installation, Virus & Spyware Removal & Protection, New PC Setup & Training

Call Derrick on 01279 816418 ~ 07926 289749
Email: Info@tcsstansted.co.uk

COVID-19 Changes to our advice service

The logo for Citizens Advice, featuring the words "citizens advice" in white lowercase letters inside a dark grey speech bubble shape.

To protect the health and wellbeing of our clients, volunteers and staff, we will be restricting our advice service to telephone support from 18 March until further notice. Call us on **01799 618840** or email bureau@uttlesfordcab.cabnet.org.uk and leave a message clearly stating your name, date of birth, postcode, email address and telephone number. If you are only available on certain days or times please tell us.

We plan to check our phones every working day and will come back to you as soon as we can, but please bear with us as, with limited resources, we may not be able to contact you as quickly as we would like to.

- For online advice - including advice relating to COVID-19 - please go to www.citizensadvice.org.uk
- For urgent matters relating to housing, speak to **Uttlesford District Council** on **01799 510510**.
- If you are worried about debt - speak to your creditors and tell them that you are seeking advice.
- For urgent court matters call or email the Court.
- For urgent advice on employment issues, ACAS can help, www.acas.org.uk or call 0800 123 1100.

Visit www.uttlesfordfrontline.org.uk for information about local support, to self-refer to local health and wellbeing services or to **download factsheets** giving details of:

- **Local support for anyone housebound or self-isolating**
- **Financial, employment & consumer issues relating to COVID-19**

If you don't have internet access or know someone that can print this information for you, call us and we can post you a copy.

We will be recording any information you provide in our client management system. For details on how we use your data, please see our privacy policy on www.uttlesfordcab.org.uk or speak to one of our volunteers when they call back.



Cultivated Turf Supplies

**ROTAVATING
NEW LAWNS LAID
ALL GARDEN WORK
UNDERTAKEN**

CALL FOR FREE QUOTATION

 **01279 718555**

 **07930 188920**

6 Windmill Close
Great Dunmow
Essex CM6 3AX

Andrew Allen
Heating Services

07973 688286

lunarpond@hotmail.co.uk

- 'Gas Safe' registered
- Boiler and appliance servicing and breakdowns
- Plumbing and heating installation and maintenance
- Natural gas
- Landlord certificates



ALLASPECTSTREESERVICES.CO.UK

**All Aspects
Tree Services**

TREE SURGERY - STUMP GRINDING
HEDGE CUTTING - FENCING

01279 755545 07940 231964

INFO@ALLASPECTSTREESERVICES.CO.UK

ELSENHAM PARISH COUNCIL 11 MAY 2019

By Louise Johnson, Clerk. ✉ louise.epc@gmail.com ☎ 07456 791727



The Parish Council would like to acknowledge the magnificent response to Covid-19 from the neighbouring network and volunteers, it has been incredible. Elsenham Parish Council thanks you; you have been inspirational.

The Flowerbed Committee continues to brighten everyone's day, while working within Government guidelines. Some of the flowerbed boxes are to be replaced as the timber has begun to decay. This year, due to Covid-19 regulations, our volunteers will be unable to help with the planting of begonias, therefore this will be carried out by our resident gardener.

Work is still being carried out in the playing field. The grass is cut regularly, the trees have been lifted and brambles and ivy cut back around the perimeter of the field. The work on the safety surface in the children's play area has now been completed.

The bus services are reporting that passenger numbers have dropped to approximately 2% of the usual numbers. This is having a significant impact on the viability of the operators, with many buses running with just one or two passengers. The Trusty Bus contract, which was up for renewal, has been extended for another year.

Parish Councils are not required to hold Annual Parish or Annual Parish Council Meetings this year. The Chairman and vice-Chairman of the Parish Council, members of committees, working groups, their present Chairman, coordinators and other roles will remain in their duties until May 2021.

Uttlesford District Council voted relatively strongly in favour of abandoning the draft local plan. This has caused worry, as it will leave Uttlesford without a local plan for longer and leave Elsenham open to all developers.

The waste bins are still being collected and the collection of the garden waste bins has now been reinstated.

Our Essex County Councillor, Ray Gooding, reported that the current major issue is the Government's proposal to open Primary Schools for reception, year 1 and year 6. Whilst this is a small percentage of school children, it would logistically be difficult and many issues must be considered. It would be the parents' decision whether their children go back to school or continue to home school.

The next Parish Council meeting will be 1 June 2020, 8pm via Zoom.



Double Glazed Units – SAME DAY

- Table Tops
- Shelves
- Emergency Glazing
- Replacement Misted Double Glazing
- Greenhouse Glass
- Cat and Dog Flaps Fitted
- Splash Backs – Any Colour
- Glass Cut To Size
- Emergency Boarding
- Safety Glass
- Mirrors

**LOCAL COMPANY – GREAT PRICES – RELIABLE
PROMPT SERVICE**

Elsenham – Great Dunmow – Bishops Stortford - Stansted



Bobby's Gardening Services Ltd.

We provide high quality workmanship at reasonable prices, letting our work speak for itself. Our work includes both landscaping design and garden maintenance. Local friendly business. Visit our website below. We are also on checkatrade.com.

Our services include: full garden design, decking, fences, new lawns, patio, artificial grass, garden walls, raised beds, sheds, bespoke seating, fire pit, water features, planting, living walls, stone walls plus garden maintenance.

Contact us on: 01279 957770 or 07961 546929

E: bobbysgardeningervices@yahoo.co.uk

<http://www.bobbysgardeningervices.co.uk>

CM22



One of the features of The Hundred Parishes website is a section on famous people from our area. There is a short account of each of 21 past and present celebrities, from Dick Turpin to Jamie Oliver. Gustav Holst is one of these.

GUSTAV HOLST (1874-1934)



While teaching and composing in London, Gustav Holst began a love affair with Thaxted after a walking holiday in the area led to his taking a weekend cottage nearby. A great attraction must have been its cathedral-sized church with spacious interior, where he became involved with local music-making, encouraged by the town's socialist vicar, Conrad Noel. Holst himself was an active socialist.

In 1916, Holst invited some of his London pupils to spend four days of music-making in Thaxted, at the Whitsuntide festival. Sadly, this was only repeated for two more years before being moved to London to avoid Holst's pupils becoming associated with Noel's controversial extremist left-wing sermons. The successful Thaxted Festival was re-established in 1980.

Holst stayed in Thaxted for several years working on his acknowledged masterpiece, *The Planets*. He adapted the big melody from "Jupiter" to accompany the poem "I vow to thee, my country". This became a popular hymn and Holst named the tune "Thaxted". It has since been used for fourteen other hymns worldwide as well as the anthem of the Rugby World Cup. Holst also composed the music for a popular Christmas carol, "In the Bleak Midwinter".



During these days of social distancing, we are unable to travel and enjoy our beautiful area as much as before. However, we can remind ourselves of it and read about our rich local history on the Society's website.

Ken MacDonald, Secretary

The Hundred Parishes is 450 square miles of northwest Essex, northeast Hertfordshire and southern Cambridgeshire that is largely unspoilt and is richly endowed with many fine examples of agricultural and built heritage. The area has shared a common history which shaped and preserved its distinctive landscape of small and medium-sized farms linked by winding lanes and ancient rights of way to hamlets, villages and then to small market towns. For more information visit www.hundredparishes.org.uk.

01279 656 983 - 0800 587 2556

Unit 1, Suite 1, Peek Business Centre, Woodside Road, Bishops Stortford, CM23 5RG



- Aerial Installations
- CCTV & Security Alarms
- Audio Visual Installations
- Wireless & Wired Networks
- TV Wall Mounting Services
- Sky Installations & Subscriptions
- Freesat Installations & Receivers
- Multiroom Music & TV Distribution
- Family Run Business



www.mediacomS.co.uk

info@mediacomS.co.uk

D BONNEY & SONS MANUDEN MOTOR VEHICLE ENGINEERS

MOT TESTING

ALL MAKES OF VEHICLES SERVICED INCLUDING FOUR WHEEL
DRIVES

TRW BRAKE CENTRE

DIAGNOSTIC AND FAULT FINDING

WELDING AND CHASSIS REPAIRS

SELECTION OF USED CARS

CALOR GAS STOCKIST

WE HELP YOU THE MOTORIST WITH A CHEAPER LABOUR RATE

GUARANTEED WORKMANSHIP

FREE COLLECTION AND DELIVERY IN LOCAL AREA

PLEASE RING: MALC, NEIL OR CRAIG

☎ 01279 813315 OR ☎ 01279 815946

DISTRICT COUNCILLORS' REPORT

JUNE 2020

By Cllr Lees and Cllr LeCount

✉ Cllrlecount@uttlesford.gov.uk

✉ Cllrlees@uttlesford.gov.uk

☎ 07836 346717

☎ 816675



Whilst writing there is still a feeling of low level anxiety regarding the pandemic. It has been an uncertain and worrying time for us all.

Uttlesford District Council (UDC) was the first council to hold a Full Council Meeting remotely. Alongside the agenda, we received an information pack on protocol for a remote meeting. The first line being, you must be dressed!

Though customer service is remote, it continues online and through telephone services. Two-thirds of staff have been working from home and essential services continue. Staff have been redeployed from different departments, to help with refuse collection, and apart from a short suspension of the collection of garden waste, refuse has continued to be collected. The refuse collectors have greatly appreciated the notes, waves and pictures on the bins.

The council regularly updates information regarding COVID-19 to parish councils and on their website and Facebook page. If you require help with benefits, council tax payment, small business grants (to date we have £13 million in cash grants, from the Government to businesses in need), the council has created a hub to help those in need within the district. We bask in reflected glory, that this village has been self-sufficient in that regard.

I am sure you are aware that the council voted to withdraw the Local Plan, as advised by the two inspectors, although it had cross-party support. This means of course that we must start again. It is exciting and slightly scary, but it will be completely evidence based. At this time “everything is on the table and everything is off the table” or as Garry says, “new Local Plan, new team, new day”.

Though we cannot have a surgery, we are always available via the telephone, and email. Stay safe.

Uttlesford Food Bank has received six times the volume of requests for support compared to this time last year. Volunteers are collecting donations and dropping these at the Foodbank on Mondays and Thursdays. Donations can be left at Orwell House, Station Road (next to the surgery). They need non-perishable food, sanitary wear (particularly for teenagers), children's toothbrushes and toothpaste and condiments. Petrina said, “Whilst we are all living with an underlying anxiety, we continue to show that we have the ability to think of others. We are all part of this place, YOU make this a great place to live”.

Equally importantly, **if you need support then please get in touch** with the Food Bank on ☎ 07531 436335 or with Petrina directly on ☎ 816675 or via Facebook.

CHIROPODIST & PODIATRIST

Bishop's Stortford

- Orthotics
- Diabetic Foot Care
- Saturday Clinics
- Routine Treatment

R. Handford & Colleagues
H.C. P.C Registered

Bishop's Stortford - 16 Hockerill
Street

01279 652249

www.feet.org.uk

The Beauty Shack Elsenham

07703 784466 / 01279 497236

- * Waxing
- * Facials
- * Massage
- * Nails
- * Tints
- * Spray Tans
- * Lash Extensions
- * Lash Lift
- * Occasion Hair and Makeup



Vouchers Available

GLYNN'S CHIMNEY SWEEPS

Est. 1995



VACUUM AND BRUSH

**NACS MEMBERS
HETAS APPROVED**

COMPETITIVELY PRICED

01279 424983

www.glynnschimneysweeps.com



**DECORATING SERVICES
ALL ASPECTS OF DIY**

NO JOB TOO SMALL

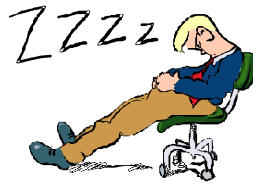
For a friendly reliable service
Just Ask.....

GARY KING

Home : 01279 850001

Mobile : 07951 452602

g.king962@btinternet.com



Ray
Franklin

Reflections from 'Lock Down'

There is a distinct parallel between those "crane" gaming machines you find in amusement arcades and attempting to buy groceries on-line. I am sure you are all familiar with the machines I mean.

Behind a glass case is proudly displayed many wonderful prizes. Mobile phones, ten pound notes and expensive looking watches. All designed to entice the punter to have a go to furiously wind handles and try to get that prize that you really must have. Some hope!

To attempt to organize a delivery from a supermarket requires the patience of a saint and the ability to stay awake into the wee small hours. They must have a special malevolent nature to tempt their prospective customers. There you will find photos of groceries and goodies in full colour. So, you sit and wait and wait and wait at midnight in your pants, hunched over your computer. Just as you think you may be successful the screen changes to "Sorry - all slots are taken - try again another day." Cursing Bill Gates, you make your way to bed. There will always be another day.

Special Culinary notes

Being stuck indoors allows much experimentation on the cooking front. Now I fully realise I am never going to compete with those who supply comprehensive menus and cooking instructions within this magazine. However, I pass on my findings. Crumpets improve by being frozen before you toast them. Noodle soups are greatly improved by the addition of "Chip Shop" curry granules.

Happy dining and stay safe.

ST. MARY'S
ELSENHAM



900 YEARS
OF WORSHIP
AD 1119 - AD 2019

ST MARY'S FABRIC FUND ELSENHAM

Registered Charity No 1052884

By David Hill ☎ 812397



The latest news, as I write this, suggests that we may be starting to see the light at the end of the coronavirus tunnel. The problem is, it seems to be a very long tunnel. As I said last month, the plans for Fabric Fund activities are on hold, which unfortunately means that we have now decided to postpone, for the second year in succession, our vintage toy and doll exhibition which was planned for 20/21 June.

We'll keep you updated of any other changes through these pages. Stay safe.

Christine's Will Writing Limited

'this firm complies with the IPW code of practice'



**Wills, Will Trusts, Lasting Power of Attorney,
Funeral Plans, Estate Administration
and Safe Document Storage**

**Personal, confidential service in the comfort
of your own home, at a time that suits you**

Single Wills from £150 * Joint Mirror Wills from £200
LPA's £300 each + Court Fees * NO VAT PAYABLE

01763 848555/07703 258555

Christine Grisbrooke MIPW
chris@christineswillwriting.co.uk

www.christineswillwriting.co.uk



**-STEPHENS-
CHIMNEY
SWEEP**



*Insurance Certificate supplied - Fully
Insured - Free Smoke Test*

Open Fires - Multi Fuel Stoves -
Aga - Rayburn - Gas - Oil

**CCTV Surveys - Bird Nest Removal
Local Business**

Tel: 0800 112 3600

Mob: 07918 708626

www.stephenschimneysweep.co.uk

Mat Duxbury

PAINTING

Professional Interior and Exterior Painting Specialist

References available on request

20 Years' experience

Fully Insured

NVQ Qualified and Health and Safety Certified

Local, reliable and friendly service guaranteed

For a free estimate please contact Mat on  07810 250426 or
email  mat@duxburypainting.co.uk

ELSENHAM



NATURAL OUTLOOK ON HOME AND AWAY

By Heather Salvidge 📞 814153



Some of us can get out a bit more now but if you are still largely housebound and have little or no garden you can still birdwatch.

The juvenile offspring of some of your regulars may have fledged and will have joined their parents at feeding time. Maybe there will be some 'new' ones – perhaps a house martin or swallow zapping by overhead or a warbler of some kind such as a chiffchaff. Small birds, about 4” long with black legs and typical 'small-bird' shape but thinnish and round headed. It has a dull olive back, wings and tail and is yellowish below with a pointed bill. It takes its name from the male's song and flicks its wings and is distinctly jerky in its movements as it works through plants, shrubs and trees.

So long as you have a flower pot or two outdoors or are on a route between sources of nectar you should see butterflies and/or some day-flying moths. The spring brood of holly blue butterflies should still be about; like most of the 'blues', males and females differ somewhat. Both these small butterflies have silvery speckled under-wings and blue upper sides but the black wing fringe on females is more pronounced, even more so on the summer broods.



Then there are the familiar peacocks with their 'eyes' on the tips of the forewings and the smaller, neater, small tortoiseshell with their speckled blue fringe round both fore and hind wings. Cinnabar moths are daytime flyers; at rest with their forewings folded flat along their backs, they appear brownish with a crimson stripe down the outside edge and two spots behind it. In flight, though, their beautiful crimson underwings show. Their caterpillars are yellow with circular and black stripes and feed on ragwort plants.

If you can get out more and go for a footpath walk further into the countryside (Google 'EROWOS' to find routes and maps) you are more likely to see farmland birds such as yellowhammers and linnets. Both these birds were far more common when I was a lot younger but are scarcer nowadays. About 5¼” male linnets in summer have a rosy patch on their heads and another on the top of their palish breast, otherwise they have a grey head and a chestnut back. Out of the breeding season he is more like the female always is – a streaky dull, grey brown. They pair up and breed in farmland hedges, gorse or scrub. In winter though they often join flocks of other farmland birds and feed with them in large numbers on stubble etc.



Yellowhammers are bigger, about 6½”, and have quite a lot of bright yellow in their plumage, the males more so as it shows on their heads and underparts, setting off their chestnut back and wings. Females are more subdued both in their shades of yellow and brown and juveniles even more so. This bird is one of the few British birds to have its song transcribed into words as it seems to be saying “a little bit of bread and no cheese”.

Binwash
We clean
your
wheelie
bins!



Commercial & Domestic

**Monthly Cleaning
from just £4.50!**

Professional equipment
Same day as waste collection

www.binwash-uk.com

01799 529899

enquiries@binwash-uk.com

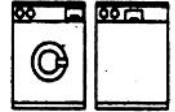
ANGLIA 
ELECTRICS

Established 1972

Domestic Appliance Repair Service

We offer Specialist Dishwasher,
Refrigeration & Cooker Service, in addition
to our long established and renowned
Washing Machine Service

Our Engineers are
Experienced and
Trained to service
most makes



01279 658767

Friendly Prompt Service

**S. PERRY
CHAPEL END NURSERY**

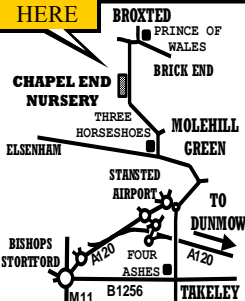
**Due to Covid-19 the Nursery is Closed
and will remain so until we are allowed to reopen.
Check our website for limited local home delivery and updated news**

**SEED & CUTTING COMPOST
20 Litre Bag
£2.75 EACH 3 For £7.25**

**HORTICULTURAL GRIT
COLOURED GRAVELS
PEBBLES COBBLES**

**GODWINS
MULTIPURPOSE COMPOST
60 Litre Bag
£4.50 EACH 3 For £11.50**

**WE ARE
HERE**



**COUNTRY VALUE SEEDS ALL
90p per PACKET
Mr Fothergills Seeds
Buy 5 Packs get Cheapest Free**

**OPEN 9am to 5 pm
MONDAY TO SATURDAY (CLOSED SUNDAYS)
MOLEHILL GREEN ROAD
BROXTED DUNMOW ESSEX CM6 2BW
01279 850771**

www.chapelendnurserysperry.co.uk

**VEGETABLE PLANTS
BASKET & TUB PLANTS
ALPINES
HERBACEOUS
HERBS
ROSES
SHRUBS
POND PLANTS
AQUATIC COMPOST
GODWINS COMPOST
WILD BIRD FOOD
SUNDRIES**

ELSENHAM VILLAGE HISTORY SOCIETY

By Mike Rea, Secretary ☎ 813634 ✉ evhs12@hotmail.co.uk

🌐 www.elsenham-history.co.uk



The current epidemic is the biggest thing to affect the village for many years, probably since WW2. We feel we should be recording the event and producing a diary of what is happening in the village during these odd times. For example, the shopping being done to help those during 'Lockdown', how people are coping being confined to their homes, how they take exercise, and the first Zoom enabled virtual Parish Council meeting? I am sure you can think of many more examples so please jot down your experiences as we navigate these turbulent times. Pass them on to us and we will collate them into the Elsenham Corona Diaries. Thank you.

And now the answers to last month's quiz.

1. The Church was laid down in 1110 AD making it 910 years old
2. Dedicated to St Mary the Virgin
3. The school opened in the current building in 1863 which was a gift from Mrs Clarissa Rush after whom Rush Lane is named
4. The horse is Golden Miller, the most successful Cheltenham Gold Cup Winner ever having won five consecutive times from 1932 to 1936
5. At the time of its greatest success the owner was Dorothy Paget
6. Sir Walter Gilbey planted fruit orchards in Elsenham and in 1890 there was such a glut of fruit he opened the factory to use it all up
7. "The most expensive jam in the world" and it was delicious to boot!
8. The Mini Marathon was held in June 1981
9. The railway was established in 1843 and inaugurated in 1845. The station was moved from Robin Hood Road to its present site in 1863 due to the severe gradient causing trains to run away
10. The Thaxted branch was nicknamed "The Gin 'n' Toffee" after Sir Walter's gin and Lee's toffees in Thaxted
11. The Crown Inn built around 1785 and still extant and the Robin Hood that closed its doors in 1989
12. The 150th anniversary of the railway was celebrated with steam rallies in the Station Car Park and special steam trains on the main line
13. Mrs Reid was appointed Head Teacher at the School in September 2003
14. The garage was called Barkers
15. The land under Glebe End was originally allotments and it was from here that the then village policeman George Johnson accidentally shot and killed Mrs Dixon who was tending her garden across the railway at 6 High St in 1940

Our next meeting was due to be held on Wednesday 10 June 2020. In light of the current situation the decision has been made to cancel this meeting and invite our speaker, Anthea Hawden from Raking Light, to return next year in what we hope will be happier and more settled times.

Whenever our next meeting is held we look forward to welcoming you all. In the meantime be good and stay safe.

★ ★
Clare's gents hairstylist
@ Rickling Green

★ Appointments from
7am Mon-Sat

★ FREE easy parking

★ Fully qualified
& insured



Call: 01799 542424
Text: 07791 058406

City &
Guilds
Qualified



**Danielle Rumble
Interiors**



Website: www.daniellerumble.co.uk
Email: interiors@daniellerumble.co.uk
Tel: 01279 944141
Mob: 07500 058052

Danielle Rumble Interiors is a professional and relaxed practice that aims to provide a unique, residential design, tailored to your every need. It offers a complete design experience from initial consultation to finished project.

CHRISTIANITY | EXPLORED

WHAT'S THE BEST NEWS
YOU'VE EVER HEARD?



What do Christians believe? Who is Jesus Christ? Did he really exist? Is he really God? If he did exist and he is God, what did he say while he was here on earth? Does he really tell us what the point of life is?

We have only one life – what is it all about?

During these uncertain times, now seems a great time to investigate who Jesus was and make your own mind up! **Come and join our relaxed and informal zoom course.**

- You don't need to know anything about the Bible.
- You won't be asked to read aloud, pray or sing.
- You can ask any question you want.

The sessions last about one hour and include a video to watch and the opportunity to find out who Jesus is and why he came.

HOW TO JOIN VIA ZOOM: Sessions can be tailored around your day; we can run meetings in the morning, afternoon or evening to fit around homeschooling, work and family life.

If you would like to join a group please **contact** office@heuchurch.co.uk stating which day and time slot (morning, afternoon, evening) suits you and we will contact you about joining.

WANT MORE INFO? To find out more about the course see www.christianityexplored.org

ELSENHAM WOMEN'S INSTITUTE

By Moyra Jackson ☎ 647351



I am writing this in the middle of a cold snap – who would have thought after the beautiful weather we had that plants would now be frost damaged.

Am I the only person losing track of days, weeks and months? Probably not.

I do have some WI activity to report – by the time you read this we will have had our first virtual meeting with the wonderful Nicholas Henderson. His talk will be the second of his four-part trilogy (his words, not mine) and is about Henry VIII's middle two wives, Jane Seymour and Anne of Cleves. I will let you know how it goes.

Our June meeting (again virtual, thanks to Zoom) is on Thursday 18 June and is with Donna Negus who will tell us about "Mindfulness in Everyday Language". An appropriate subject for these trying times when mental health and wellbeing can be every bit as important as physical health.

We have a monthly newsletter going to all our members – not quite in competition with Elsenham News yet, but we are very happy with it! It helps us share information, tips and just communicate.

Our Natter Nights are working well on Zoom and our committee continues to meet this way too. It is actually quite nice chatting to everyone from the comfort of your own favourite chair.

Many of our members are key workers in hospitals, care homes, and many other locations keeping us all safe, well and able to shop for essentials. We would not manage without you. Our meetings all start later so we can all take part in the NHS and Key Workers appreciation or 'the clap' as it is affectionately known now! Well done to you all.

Love and best wishes from all at Elsenham WI. Stay safe



Details of our programme, events and activities can be found on Facebook, Twitter and Instagram – search for Elsenham WI.

Elsenham WI – There's a lot going on!



Pike's Plumbing & Heating

Whether you're looking for a plumber or heating engineer, Pike's Plumbing & Heating can help.

If it's an emergency, simple problem or you're just thinking about a new boiler or bathroom give me a call – I'm available when you need me 24/7. Now's a good time to think about servicing your boiler too and make sure you're not left out in the cold! **No Call-Out Charges & Free Quotations**

Tel: 07889 140035

Craig Pike

Email: info@pikesph.co.uk



Web: www.pikesph.co.uk

- Extensions
- Barn conversions
- New Homes
- Loft conversions
- Planning Drawings
- Building Regulations
- Project Management



Local Architectural Design



Free initial consultation

t: 01799 540600

e: info@alundesign.com

www.alundesign.com

Alun Design Consultancy, Neville House, Station Road,
Wendens Ambo, Saffron Walden, Essex, CB11 4LB

alun
design
consultancy
architectural design
planning
project management
interior design



ST MARY'S CHURCH ELSENHAM
Vicar: Gary Townsend
The Vicarage, Carters Lane, Henham ☎ 850281

We are all looking forward to the time when the lockdown measures will be relaxed and we can return to some of the things that we have had to forego for so long. When that time comes I suspect there will be a rush to get back to the shops, council tips and places of recreation etc. I guess there will be a surge and I'm sure we can all understand why. Just like when people jump, clothes and all, into an oasis pool after many days in the desert so the desire to immerse ourselves fully and quickly in what we've been denied will be a powerful urge. I have decided that when the time comes I will ease myself back into shopping and other activities gradually. This is partly because rushing is against my nature and partly because I've acquired more of something during lockdown that I do not want to lose – patience.

Lockdown has shown how capable we all are of being patient. I've no doubt that things have been (and continue to be) far harder for many people than they have been for me. I think of those who have lost loved ones; those who have been on the frontline of caring for the sick and elderly; those with children to amuse or teach; workers who have been furloughed or those forced to work from home; those in flats and others with little of their own outside space; those for whom interrupted DIY projects have been on hold;

cancelled weddings and holidays. Many people have been subjected to greater degrees of frustration than I have and the patience they have shown has been extraordinary. The inspiration I draw from their examples, as well as coping with my own much smaller difficulties, has taught me the value of patience. In fact, can we not all say that lockdown has taught us not simply the value of patience but the absolute necessity of it? This is why it's said that patience is a virtue. As far as I understand it, a virtue is a character trait without which human wellbeing is impossible. Just imagine the mess we'd be in if no-one had been patient during lockdown! I think we'd have been in meltdown long before now.

However, we all know patience can run out and pressing on is a hard slog; one of the old ways of translating the Biblical word for patience was 'long suffering'. Jesus taught his disciples that they should always pray and never give up (*Luke Gospel chapter 18 v1*).

I know there have been answers to prayer during this pandemic and so, as hard as it is to continue exercising restraint, I believe we can pray and ask God to help us keep going – if that's what we choose to do.

Rev. Gary Townsend

Scrub And Shine

Herts & Essex
leading carpet & upholstery
cleaning specialists!

We're a fully qualified family only
company and have been in the
trade for over 16 years.

We offer competitive pricing with
100% customer satisfaction
guaranteed.

Call or email us today for a free
quotation!

07545 394262
07810 016272

scrubnshine1@gmail.com

NICK SHUTES PAINTING AND DECORATING LTD

High quality interior and
exterior redecoration
Woodwork repairs and
replacements
Fascias, soffits and cladding

**01799 542385
07885 778213**

www.nickshutesdecorating.co.uk

YOUNG'S

WINDOW CLEANING SERVICE

We specialise in residential properties offering a quality
and regular service for exterior and interior cleans
Serving the Elsenham community for the last 10 years

Call or text Malcolm for a FREE quote
07817 481901

APPLE CAKE RECIPE

By Heather Salvidge



An easy and tasty recipe that you can serve for dessert, with a cup of tea or coffee, or even as a treat! We could all do with a delicious homemade cake, especially in these unprecedented times. Enjoy!

APPLE CAKE (1¼ hours)

- 113g (4oz) butter
- 113g (4oz) soft brown sugar
- 113g (4oz) sultanas
- 142ml (¼ pint) apple juice
- 226g (8oz) English dessert apples, peeled, cored and chopped
- 2 eggs, beaten
- 283g (10oz) self-raising flour
- 28g (1oz) demerara sugar
- 1 teaspoon cinnamon

Pre-heat the oven to 180C/350F/Gas mark 4 and grease and line a 7" (18cm) round cake tin. Place the butter, brown sugar, sultanas and apple juice in a large saucepan and heat gently for 5 minutes. Allow to cool then add the apples and eggs and mix well. Fold in the flour and cinnamon, and spoon into the prepared tin. Sprinkle over the demerara sugar and bake for 60 – 75 minutes until golden brown and firm to the touch. Leave it in the tin for 5 minutes then turn out onto a wire rack to cool.

CHEF'S TIP:

If given the chance, this cake will keep for up to a week in an airtight tin or wrapped in tin foil.

Hello to all the lovely people who came to our afternoon teas and coffee mornings. It's been a very long time since we were able to be together so just wanted to let you know that you are in our thoughts. We sincerely hope that all is well with you and your families.

I know some of you continue to do the exercise class with Jacki – thank you Jacki for helping to keep people fit - where would we be without the technology that allows us to see our family and friends even though we can't be with them.

In the famous words of Vera Lynn – we'll meet again, we do know where, we just don't know when. Keep safe everyone,

Village Café Team



The Executives Choice Chauffeur Company providing clients with premium transport at affordable prices. Airports, sporting events, theatre trips etc.

Corporate accounts welcomed.
7 Seater available

To discuss your requirements

Contact Graham Anderson: graham@execschoice.com

Phone 07481 494988

www.execschoice.com

Your local, independent sales & letting agent

- Sell or let your home with no fuss & the best price possible
- Accompanied viewings weekends & evenings
- Fixed fees or percentage (No VAT to pay)

Call 01279 813318 to book a free, no obligation valuation.



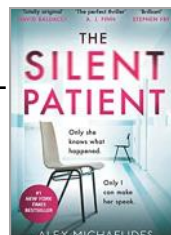
rightmove  Zoopla  PrimeLocation  nTheMarket.com 

1 Station Road, Stansted, CM24 8BE
Email: peter.james@murdochsestateagents.co.uk
www.murdochsestateagents.co.uk

THE SILENT PATIENT

By Alex Michaelides

Reviewed by Marion Giles



'Alicia Berenson lived a seemingly perfect life until one day six years ago. When she shot her husband in the head five times. Since then she hasn't spoken a single word. It's time to find out why. . . .' So says the blurb on the back of the book.

Reviews:

- 'Absolutely brilliant . . . I read it in a state of intense, breathless excitement' *Stephen Fry*
- 'I read it in two nights and savoured every luscious word, every grim encounter, every startling twist.' *David Baldacci*
- 'The Silent Patient may be a first novel, but it has the pace and finesse of a master.' *BBC Culture*

This was the choice of the book group this month. It received mixed reviews. True to say nobody disliked it. We were all of the opinion that the book was not a literary classic, however, that made it an easy read. No one was surprised to learn that Alex Michaelides is a thriller-film scriptwriter. Once you are aware of this, one can't help noticing how everything would translate well to the screen. This book was not particularly thrilling to read but would probably make a good film and plans are already under way.

The main story is set within a secure psychiatric ward. The narrator, for the most part, shares top billing with a young girl, artist Alicia Berenson, who after traumatic events refuses to, or is unable, to speak.

The narrator, Theo Faber, is a young psychotherapist, who seizes on the opportunity to work with Alicia, in the hopes of restoring her speech.

Through a series of plot devices, we learn something of Alicia's story and also of Theo's. To say more about these would be a plot spoiler.

The publicity would indicate that the book is a breath-taking page turner. This is not what we found. Some of the writing is flat and clichéd; the diary sequences are not wholly convincing and not really illustrative of an agonised state of mind. There are lapses in grammar and the book would have benefitted from careful proof-reading. There could have been more character development. Everyone seemed a little bit manic. The beginning was slow and then the ending felt rushed. It also gave the impression of having been written in a rush.

The underlying idea is promising and you probably will want to finish it, but more to find out what happened rather than because you can't put it down.

*Bobby's
Construction
Services Ltd.*



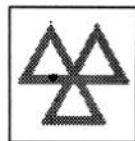
Specialised joinery and carpentry, wood flooring, painting and decorating, internal & external, tiling, kitchen, bathroom, decking, paving, electrical work

Contact us on: 01279 957770 or 07961 546929
bobbysem@hotmail.co.uk



GARRETT'S GARAGE SERVICES

42 Golds Business Park, Elsenham
Bishop's Stortford, Herts CM22 6JX



- Mechanical Repairs
 - Servicing
 - Tyres
 - Engine Tuning
 - Computer Diagnosis
 - Windscreen Repairs
 - M.O.T.'s - Catalyst & Diesel Tested
 - E.H.D.C. - Authorised Hackney Carriage Testers
 - Batteries
 - Exhausts
- MODERN WELL MAINTAINED WORKSHOP*
- ALL MAKES OF VEHICLE*
- *FREE COLLECTION AND*
*DELIVERY SERVICE**

TEL: 01279 647777 FAX 01279 817622



May Plant Sale

We would like to thank you for supporting us by buying plants 'from a distance' in a very different way this year.

When we began taking our cuttings in the autumn and even when we were sowing our seeds in February, we could never have imagined how different our sale would need to be in 2020. It seems, however, that sales have surpassed all expectations and we are so grateful to all of you who now have our plants in your possession.

Thuy Nottage and Alex Lucas are to be commended for their superior organisational skills in masterminding the event. Proceeds from the sale will be put towards the costs of staging the Flower Show in August.

August Flower Show

We do not know how things will be for any of us by the time late summer arrives. Maybe in another month we will be in a better position to decide whether the Flower Show could take place on 22 August as planned. So please watch this space for next month's update!

BONFIRES DURING THE CORONAVIRUS OUTBREAK

Please avoid bonfires whilst the Coronavirus controls are in place if smoke or smell might prevent neighbours' enjoyment of their garden, prevent them from opening windows, hanging washing out or aggravate any health conditions.

If you are experiencing issues with smoke from a bonfire, you can report it to the Uttlesford Environmental Health Team. <https://www.uttlesford.gov.uk/article/5706/Bonfires>
If you really must light a bonfire, try to ensure that the material you need to burn is dry. This will minimise the amount of smoke produced. Here are some guidelines

- Never burn household rubbish, rubber tyres or anything containing plastic, foam or paint. Only burn dry material
- Never use old engine oil, meths or petrol to light the fire or encourage it
- Avoid burning when the wind will carry the smoke over roads or into other people's property
- Avoid burning at weekends and bank holidays when people are in their gardens
- Avoid burning when the air quality in your area is 'poor' or 'very poor'
- Take care to keep children away from a bonfire
- Heaps of garden refuse provide a haven for small animals such as hedgehogs. Remember to check before you light the fire
- Never leave a fire unattended or to smoulder - douse with water if necessary



T.J. Patmore
Building Services

- Extensions – Loft Conversions
- Roof work – Carpentry – Roof Tiling
- First and second fix carpentry
- Kitchen fitting
- Built in wardrobes
- Decorating interior and exterior
- Floor and wall tiling
- Fencing – Decking – Patios
- Supply and fix u.p.v.c. windows
- House maintenance

*Call Trevor for friendly help, advice
and FREE estimates*

tel 01279 816097
mob 07932 666224



BMH

**WINDOW CLEANING
& GARDEN SERVICES**

- Window Cleaning**
- Gutter Cleaning**
- Commercial Window Cleaning**
- Garden Services**
- Excellent Rates**
- Professional & Trustworthy**
- Fully Insured**
- References on request**

07852 722139

“Get rid of the grime with a Tony shine”

hpc (State Registered)
Chiropodist

CH09088

Home Visiting Practice

Mrs Julie Golden
Est. 1994
01279 873492

A professional service at a
competitive rate



Advertise your
business in Elsenham
News

Contact us at

elsenhamnews@hotmail.co.uk

STANSTED MOUNTFITCHET U3A

By Sally Rich, Vice Chair ☎ 07874 385541

✉ stanstedu3a@gmail.com

Stansted Mountfitchet U3A

10th Anniversary 2019-20



I am pleased to report that Stansted Mountfitchet U3A is still alive and well thanks to the efforts of many of our members who keep going and are keeping in touch despite the lockdown.

Thanks to our group leaders, many of our groups are still active, albeit with a different format. Some are using Zoom to have regular meetings – the Art Group members are even painting and drawing together via Zoom on a weekly basis and our committee is holding its meetings on Zoom. Other groups that are having active Zoom meetings are Poetry, Literature, French, Creative Writing and the Singers. Apologies to any that have been missed out of this list. Many members are staying in touch via email and phone and we are sending out weekly newsletters to share news and information. People have also been sharing photos of their lovely walks around the area.

Some managed to have VE Day celebrations, either with family at home or with neighbours, but always being careful to maintain their social distancing. You can see the lovely photo that Pat B sent us of her special VE Day tea that she had at home with family.



Despite the problems of getting out, over 60% of our members have already renewed this year, although we have given people until the end of July to do so, an extension of three months. We are still taking new members, therefore if you are thinking of joining us, just go to our website and download a form, or you can ✉ stanstedu3a@gmail.com and we will contact you.

Keep safe and well everyone.

GARDEN HINT *By Sue Johnson*

If growing greenhouse crops, ensure you have adequate shading, and check night time temperatures as you may need to close vents and doors.



Options Hair Design and Hair Loss Clinic

An essential choice with a passion for hair

We welcome you with a complete in-depth consultation, whether this is for a change of style or colour or for more clinical advice on the health of your hair and scalp.

For clients visiting The Hair Loss Clinic we are able to offer a completely private consultation and treatment room away from the main salon. We offer proven treatments for hair loss and also provide a complete wig fitting and finishing service. We work closely with a leading UK Trichologist who holds regular clinics with our clients.

Our products are organic and formulated to enhance your hair health. Our dedicated stylists will work with you to achieve the look and feel that you want. Our salon has parking right outside and a warm welcome awaits you.

Elsenham Salon 01279 812665

Bookings not always necessary

www.optionssalon.co.uk

Hair Loss Clients please call Ann on 07957 166436



DEVELOPMENT DEVELOPMENTS

By Graham Mott ☎ 812516 ✉ motts@grahammott.plus.com



Uttlesford District Council held an Extraordinary Meeting at the end of April in order to consider what to do next with the Local Plan. The Inspectors reported on 10 January and Uttlesford engaged consultants who eventually advised that UDC should do what the Inspectors told them to do, that is, abandon its strategy of three new 'garden settlements'. But they did not say there should be no new large schemes.

As is usual, the meeting gave the opportunity for representations from the public. An enterprising and original speaker on behalf of Elsenham Parish Council pointed out that the Government has introduced a deadline of the end of 2023 by which date local plans must be determined, and claimed that Uttlesford will struggle to produce a truly new Plan in that time; it should therefore seek to incorporate as much as possible of the old Plan, whilst not making it too obvious to the Inspectors.

All the written representations support withdrawal of the plan and many want the 'garden settlement' near to them to be abandoned. There are plenty of statements as to where the new houses should not be; but suggestions as to where they should be are as thin on the ground as the houses themselves, so far.

In other respects the submissions make for a curiously mixed bag. They conclude with two which enter the realm of the more than slightly weird. There are eleven pages from the Thaxted Society, full of flowery language where you shake your head in trying to discern the meaning, and wonder if they will ever get to the point; for instance:

We may be obsessed in this country with the past, but where it still lies it does have affect and impact until it is ignored and at Uttlesford that does appear to be the case.

Lastly there is an unbelievable 47 pages including many from a learned QC (who won't have come cheap) and extensive quotations from the examination of the previous failed Local Plan in 2014. It could all be summarised in a sentence: 'The policy which requires a replacement dwelling to be no larger than the original should be discarded'. The relevance to the decision as to whether to proceed with the current plan or start afresh is not explained, and councillors will not have been encouraged to take other representations seriously.

The Inspectors' central message, that there should be more building in small and medium-sized settlements, is not good news for Elsenham. Meanwhile the village is free of the sound of construction vehicles, and not just because of the strange times in which we continue to live. For reasons unknown, Bovis Homes seem to be in no hurry at all to start on their approved project to build 130 homes off Hall Road, to the south of the school.

Do-It-4U

Repair, Care & Maintenance

For your Home and Garden

- ◆ Plumbing, Electrical & Carpentry Services
- ◆ Drain Blockages Cleared
- ◆ Gutters Cleaned, Repaired or Replaced
- ◆ Gardens Tidied & Maintained
- ◆ Hedges & Topiary Trimmed & Shaped
- ◆ Fences Erected & Repaired
- ◆ Sheds & Other Sectional Buildings Erected

Telephone
01279 814411
Mobile
07774 877320

EMVY

beauty

Qualified Eyelash Technician and Make-Up Artist / Leigh Drive -Elsenham

Eyelash Extensions

Classic Eyelash Extensions

These lashes bring a thicker extension to natural eyelashes recommended for a natural look.

£15

Hybrid Eyelash Extensions

A combination of classic and Russian volume eyelashes resulting in a thicker enhanced look

£18

Russian Volume Extensions

These lashes create a full, thick and dramatic look, recommended for those who want extra coverage

£20

March - June %%% Offer

Bring a friend and get any set of eyelash extensions for £10 each!

Make-Up

Full Face of Makeup including fake eyelashes

This treatment includes a full face cleanse, with a full face of makeup in your desired style and fake eyelashes

£15

Full Face of Makeup without fake eyelashes

All of the above, without fake eyelashes

£13

Full Face of Makeup with Classic or Hybrid Eyelash Extensions

This offer is for a limited time only!

£25

CONTACT: 07969747609 (text only)
emilysbannerman@gmail.com

ELSENHAM TENNIS CLUB

By Petra Studholme ☎ 01279 814667



Update for new members

Our membership normally starts in April with fees remaining unchanged from last year. This season we reduced membership pro rata to start in June until end of March. Fees are as follows: Adult £55, Couple £95, Family £105, Senior £30, Student £30, Junior - £12.50

Further benefits (once normal play is allowed to resume): club nights, Sunday afternoon leisure play, ladies on Friday morning play, weekly Wednesday evening coaching sessions. We have floodlights all year round. For more info go to www.elsenhamtennisclub.co.uk.

We participate in the Essex Small Club League in Men's, Ladies' and Mixed if you want to join our teams. Again, the summer league has been cancelled but we are hopeful that this competition will resume in autumn.

The Hospital Cup tournament has also been cancelled.

Being a member of ETC (and becoming a member of British Tennis for free) means that you are also eligible to enter the Wimbledon Ballot we hold in Spring of next year. If you fancy applying for Wimbledon tickets, it is a great way to increase your chances to watch Wimbledon at SW19 by becoming a member of ETC. We can but dream.

Our courts have been re-opened: court bookings for members – subject to change if advice from the government and LTA guidelines change

All bookings to be made online, no turn up and play to ensure that we do not have too many players on one court at any time, we strictly adhere to LTA and government guidelines. Additional measures are in place to ensure all our members' safety.

Court bookings for non-members (court hire) – subject to change if advice from the government and LTA guidelines change

In line with government and LTA (our governing body) guidelines, Elsenham Tennis Club is hoping to open the courts in June for the general public to hire. We must stress that we will review this of course if any advice on use of outdoor spaces changes. We will also insist that everyone using our facilities adheres to the strict measures we will put in place to ensure social distancing, public safety and hygiene with regards to hand washing, using sanitisers and wiping down commonly used surfaces such as locks, handles and the net equipment. Those in self-isolation are not allowed to use the courts until their full isolation time period has elapsed. All important safety details will be displayed on notices at the courts. For further up to date info, please refer to our website.

WEEKLY ACTIVITIES are currently suspended until further notice – keep an eye on the ETC website and follow us on Facebook for the latest info.

Spellbrook Garden Design

DRIVEWAY & GARDEN DESIGN

- ✓ Decorative Walling and Fencing
- ✓ Patios & Paths
- ✓ Block paving, Tarmac and Graveling
- ✓ Decking
- ✓ Turfing, Garden design and build
- ✓ Stone cleaning

spellbrookgardendesign.simdif.com

Tel: 07799 603089 / 01279 503936 / 0800 696 5257

Westwoods, London Rd, Spellbrook CM23 4AH



Checkatrade.com

MyBuilder.com

Paddy McKeown



WALDEN Sweeps

- ◆ Services offered include:
- ◆ Chimney and Flue Sweeping
- ◆ Wood Burning Stoves
- ◆ Open Fires
- ◆ Aga/Rayburn
- ◆ Bird Nest Removal
- ◆ CCTV Examinations

t: 01799 599981

m: 07956 099788

e: paddy@waldensweeps.myzen.co.uk

WWW.WALDENCHIMNEYSWEEPS.CO.UK

Essex Autospray

Your local Collision Repair Centre - Est 1982

- Free Courtesy Cars
- Free Estimates
- Low Bake Ovens
- Blackhawk Alignment



Tel: 01279 816296 E: info@essexautospray.co.uk

www.essexautospray.com

M11 Business Link, Parsonage Lane,

STANSTED HALL & ELSENHAM CRICKET CLUB

By David Brown ☎ 831011 ✉ david1.r.brown@gmail.com



The club has decided to open a 'Just Giving' page to try to raise funds. With little or no income into the club we are predicting a loss of £5,000 this year.

It looks very unlikely that cricket will be played at the recreational level until mid-July at the earliest. This is a great shame but totally understandable as this pandemic continues to cause havoc around the world.

We have applied to Uttlesford District Council and Sport England for grants but have failed in securing any funding thus far. This is rather annoying on the basis that there appears to be a lot of money around for sports clubs with certain criteria. As you are aware we do support the local community mainly through our junior section.

Looking to the future we are concerned that our main income comes from our sponsors, advertisers and our two quizzes – will 180 people be able to go into a school hall in years to come? Worrying and difficult times but I feel sure that somehow we will pull through.

We would ask that members and friends would consider making a donation through our JustGiving page. [Justgiving.com/campaign/stanstedhall/2020](https://www.justgiving.com/campaign/stanstedhall/2020)

We would like to once again thank the NHS staff and indeed all workers that continue to show determination and bravery during this difficult period.

#QUARANTQUIZ

Answers to last month's quiz

- | | |
|----------------|------------------|
| 1. GERMANY | 9. PAKISTAN |
| 2. INDONESIA | 10. EAST TIMOR |
| 3. SOUTH KOREA | 11. IRELAND |
| 4. SINGAPORE | 12. MALDIVES |
| 5. NETHERLANDS | 13. SOUTH AFRICA |
| 6. BOTSWANA | 14. BANGLADESH |
| 7. SRI LANKA | 15. ARGENTINA |
| 8. DENMARK | 16. CAMBODIA |
| | 17. HONDURAS |
| | 18. LICHTENSTEIN |
| | 19. LIBYA |
| | 20. MONGOLIA |

smnailsandlashes



Sophie May - Nail and Lash Technician



Monday's - first two of each month, 11am - 4pm
Fridays 11am - 6.30pm
Saturdays 11am - 4pm
Message via Facebook or Instagram to book in

FULLY
QUALIFIED
AND
INSURED



TREATMENTS
INCLUDE ACRYLIC
EXTENSIONS, GEL
POLISH, LASH LIFT
AND TINT AND
PEDICURES



BEAUTIFUL,
RELAXING
ENVIRONMENT

KINGSWOOD PLACE
EISENHAM
CM22 6GX



Naomi Gardening & Design

Creating outdoor spaces for living



Garden Maintenance & advice



Garden design & Consultation



Bespoke planting designs

Call for a free estimate

M: 07778 620576

E: Naomi@NaomiGardenDesign.co.uk

W: www.NaomiGardeningandDesign.co.uk

Trained at Capel Manor College

DANIEL ROBINSON & SONS

Independent Family Funeral Directors & Monumental Masons

Est 1892

Always here when you need us...

- Arrangements in the comfort of your own home, if preferred
- Private Chapel of Rest
- Pre-paid funeral planning services
- Traditional & contemporary funerals to suit your wishes



79/81 South Street
BISHOP'S STORTFORD
01279 655477

www.drobinson.co.uk

ELSENHAM BOWLS AND SOCIAL CLUB

By Sue Waite ☎ 07956 899326 ✉ suewaite2003@yahoo.co.uk



The hard work continues and the green is in tip top condition, so it is very good news that the Government is beginning to lift restrictions on people playing sport. Bowls England is in the process of putting together detailed guidelines and so there is hope for us opening in the future.

However, we would still have to maintain social distancing and only two people could play together. Therefore we have much to think about and organise before this can happen but we are keeping our fingers crossed.

Trevor Hackett is still organising his quizzes which he will email to you if you want to join in and of course the 100 club is still going strong. If you want to join this then Trevor is the one to contact.

Let's hope that over the next few weeks, restrictions will continue to be lifted and we can at least go to the bowls club for a roll up and a get together with friends, albeit from a distance.

Stay safe everyone and remember to keep your distance. Sending best wishes to you all and hope that all is well with you and your families.

THE NUMBER GAME

Answers to last month's quiz

- | | |
|--------------------------------|------------------------------------|
| 1. 7 Days in a Week | 10. 1969 First Man on the Moon |
| 2. 1666 Great Fire of London | 11. 180 Max Score with 3 Darts |
| 3. 12 Signs of the Zodiac | 12. 18 Holes on a Golf Course |
| 4. The 10 Commandments | 13. 365 Days in a Year |
| 5. 64 Squares on a Chess Board | 14. 366 Days in a Leap Year |
| 6. 52 Cards in a Deck | 15. 7 Ancient Wonders of the World |
| 7. Snow White and the 7 Dwarfs | 16. 3 Wise Men |
| 8. 101 Dalmatians | 17. 16 Ounces in a Pound |
| 9. 2 Peas in a Pod | 18. 14 Pounds in a Stone |
| | 19. 1000 Millilitres in a Litre |
| | 20. 12 Labours of Hercules |

CLEAR OVENS

Oven Cleaning Specialists

01279 89 89 96

we accept cards!
VISA

Make your oven look showroom fresh with a professional clean from Clear Ovens. Our fully insured expert technicians will make it shine like new.



Covering Sawbridgeworth, Harlow Epping, Great Dunmow, Braintree, Stansted, Bishop's Stortford and surrounding areas.

01279 89 89 96 or visit us online at
www.clearovens.co.uk

The difference is clear

JOHN COLEBY

Experienced Interior and Exterior Decorator

For a friendly, reliable service please telephone
01279 815510 or 0793 9070818
for a free estimate

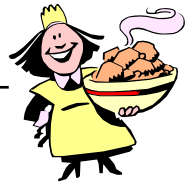
FROM THE PARISH REGISTERS

Funerals:

- Service of Thanksgiving followed by a Cremation at Cam Valley Crematorium, Great Chesterford on 30 April 2020, Patricia Platt, aged 84 years, of Crow Street, Henham.
- Service of Thanksgiving followed by a Cremation at Parndon Wood Crematorium on 6 May 2020, Bertha (known as Betty) Mary Bohan, aged 97 years, of New Road, Elsenham.

COOKERY CORNER

By Sue Johnson ☎ 812704



Roasted potatoes in olive oil, garlic, Italian seasoning and parmesan cheese, plus the always optional red chilli flakes for those of you who like a spicy kick. An utterly delicious easy recipe you can serve alongside a roast, casserole or simply on its own.

ITALIAN ROASTED GARLIC PARMESAN POTATOES (serves 4-5)

Butter for greasing the dish

- 2lb (900g) potatoes
- 2 fl oz (55ml) olive oil (preferably extra-virgin but it doesn't have to be)
- 1 teaspoon Italian seasoning
- 4 cloves garlic, crushed
- Ground black pepper
- 2oz (50g) grated parmesan cheese
- Chilli flakes (optional)
- Fresh chopped parsley, for garnish

Preheat the oven to 200°C/180°C fan/Gas Mark 6. Generously butter an 8 x 10 inch (20 x 25 cm) casserole dish. Peel and cut the potatoes in half lengthwise, then lay each half flat and slice lengthwise into ½ inch (1cm) wide half-moons. Place the potatoes in a big mixing bowl and toss with 2 tablespoons of the olive oil. Toss with the seasoning, garlic, ½ teaspoon of black pepper and half the parmesan (plus a few pinches of chilli flakes if using). Pour into the casserole dish, scooping out any spices or garlic left in the bowl. Sprinkle a tablespoon of parmesan over the top and drizzle with a tablespoon of oil.

Bake for 30 minutes then remove from the oven and toss well. Sprinkle the remaining parmesan on top and drizzle with the last of the oil. Bake for 25 minutes more. Toss well and season to taste with more pepper if needed. Place the potatoes on a serving dish, pour over any oil at the bottom of the pan and garnish with a little fresh parsley.

CHEF'S SUGGESTIONS:

Another recipe which is great warmed up the next day, if you have any left overs that is! Parmesan cheese keeps very well in the freezer, just grate straight from frozen when you next need to use some.

Editorial Information

Articles

The **last day** for editors to receive articles, advertising and letters, which must contain the author's name and address (which may be withheld), is **the 12th of each month**.

Articles should ideally consist of a half page of A5 or a full page of A5. Articles over these sizes or letters containing more than 500 words may be edited depending on space.

Copy submitted after the 12th may not be accepted but will, if deemed appropriate, be held over to the next month. We are happy to receive handwritten articles that ideally should reach us earlier than the 12th to allow for scanning etc.

Dates for the Diary must include date, event, venue and time.

Please submit all articles, adverts, letters and queries to the editorial team at: elsenhamsnews@hotmail.co.uk

General Notes

Whilst every effort is made to ensure that information is correct, the editorial team cannot be held responsible for any inconvenience caused through errors or omissions.

The views expressed within this magazine are not necessarily the views of the editorial team or Elsenham Community Association (ECA).

The editors and the ECA can accept no responsibility for the goods or services advertised in the magazine. Advertisements are included in good faith. The editors reserve the right to allow replies to letters/articles to be made in the same edition when appropriate.

The editors' decision is final.

Wanted/For Sale items: village residents may submit details of items wanted or for sale at no charge. These will be included in the next available magazine subject to space and acceptance by the editors.

Subscriptions

Elsenham News is available by email (on a pdf) at no charge, or through the post at a cost of £13 per annum. Contact Sarah, see details below.

Advertising

The costs are as follows:

	Single Insertion	Annual Cost (11 issues)
Half Page	£20	£190
Quarter Page	£10	£100
Inside Page	£50	n/a
Back Page	£75	n/a

Village organisations attract reduced rates, £5 for ¼ page. Half and full-page adverts attract full rates.

To place an advertisement:

For any queries please contact us. Please send your advert as Word or Publisher via email to elsenhamsnews@hotmail.co.uk

Once your advert has been approved and you are happy with it, you will be sent an invoice, which should be paid by BACS.

Flyers

It costs £50 to insert an advertising flyer into the magazine. You must let us know by the deadline of the 12th. You must also provide the flyers.

Editorial Team

Sarah Alder	817660
Marion Giles-Donovan	812763
Heather Baxter	812924

ECA Website

www.ElsenhamCommunityAssociation.org.uk

If you respond to one of the adverts in the magazine, please tell the advertiser that you found them in *Elsenham News*.



UPCOMING EVENTS TBC

Elsenham Flower Show Saturday 22 August 3pm Memorial Hall

Elsenham Village History meeting 9 September

Santa visits the village 5 December 1pm Village Hall

VILLAGE CONTACTS

Airport Roadside Parking		0800 731 2385
Beavers	Jackie Weston	816282
Bowls Club	Jean Platt	816151
Brownies	Jennifer Jarvis	814434
Church Office (Old Frank's, High St, Elsenham)	Anna Hicks	814285
County Councillor (Stansted)	Ray Gooding	813103
Cricket Club	David Brown	831011
The Crown pub	info@thecrown.info	814444
Cub Scouts	Linda Gleeson	850504
Cycling Club (Victoria CC)	Doug Yareham	07884 040892
Elsenham Community Association (ECA)	www.ElsenhamCommunityAssociation.org.uk	
ECA (Chairman)	Allan Hathaway	813385
ECA (Secretary)	Jill French	647543
Elsenham Surgery	www.elsenhamsurgery.nhs.uk	814730
Elsenham C of E Primary School	Linda Reid, Headteacher	813198
Elsenham Church PCC Secretary	David Hill	812397
Elsenham Rights of Way website	www.e-voice.org.uk/erowos/	
Friends of Elsenham School (FOES)	Gemma Mills	07745 036066
Guides elsenhamguides@gmail.com	Gemma Lewis	07792 572423
Henham & District Garden Society	Moyra Jackson	647351
History Society	Mike Rea evhs12@hotmail.co.uk	813634
Member of Parliament	Kemi Badenoch	0207 219 1943
Memorial Hall Bookings	Cheryl Rae	817834
Neighbourhood Watch Co-ordinator	Frances Lambert	07771 728332
	franceslambertnhw@btinternet.com	
Parish Clerk - Louise Johnson	louise.epc@gmail.com	07456 791727
Elsenham Parish Council Website	https://elsenham-pc.gov.uk/	
Police		101
Post Office		812175
Rainbows	Petrina Lees	816675
St Mary's Fabric Fund	Elizabeth Barker	813543
Tennis Club	Petra Studholme	814667
Tots & Toddlers	Trudi Marsh	899864
Uttlesford District Councillors	Petrina Lees	816675
(for Elsenham & Henham)	Garry LeCount	07836 346717
Village Hall Bookings	Annie Gleeson	07809 490731
Village Hall email address	elsenhamvillagehall@gmail.com	
Women's Institute	Gill Hathaway	813385
WI website	www.elsenhamwi.co.uk	
Youth Football Club (Chairman)	Paul Jarvis	814434

If you would like your village organisation contact to appear regularly in the magazine, please contact one of the editors, see opposite for details.



NEWPORT PIZZA

www.newportpizzasw.co.uk

**2 PIZZAS FOR
£20 ANY SIZE!**



COLLECTION & DELIVERY

Grab this amazing offer
while it lasts.

Free delivery to Elsenham
& nearby villages

07378 879899

07378 874647