

# Elsenham News



July 2022

[elsenhamsnews@hotmail.co.uk](mailto:elsenhamsnews@hotmail.co.uk)

75p where sold

### **Elsenham Village Regular Monthly or Quarterly Activities**

Parish Council 1st **Monday** of month 8pm (excl. Bank Holidays) Memorial Hall

Village Café Coffee 1st & 3rd **Tuesday** 9.30 - 11.30am Memorial Hall

& 2nd & 4th **Tuesday** 9.30 - 11.30am Bowls & Social Club

Henham & District Garden Society 1st **Tuesday** of month 2.30 - 4pm Memorial Hall

Community Choir 1st & 3rd **Tuesdays** of the month 7 - 8.30pm Village Hall

Life Drawing 2nd **Tuesday** of month 7.30 - 9.30 Village Hall

Natter Night 2nd **Tuesday** of the month from 7.30pm Bowls & Social Club

Village History Society 1st **Wednesday** of month quarterly 7.45pm Memorial Hall

Church Lunch Club 2nd & 4th **Friday** of the month 12.30pm Memorial Hall

## **July diary**

Mon 4	Parish Council Meeting	Memorial Hall 8pm
Tues 5 & 19	Village Café Coffee Morning	Memorial Hall 9.30 - 11.30am
Tues 5	Henham & District Garden Soc	Outing
Tues 5 & 19	Elsenham Community Choir	Village Hall 7pm
Fri 8 & 22	Church Lunch Club	Memorial Hall 12.30pm
Sat 9	Bingo	Bowls & Social Club 7.30 for 8pm
Sat 9	Ladies Tea Afternoon	Memorial Hall 2-4pm
Tues 12 & 26	Village Café Coffee Morning	Bowls & Social Club 9.30 - 11.30am
Tues 12	Life Drawing	Village Hall 7.30pm
Tues 12	Natter Night	Bowls & Social Club 7.30pm
Thu 14	Elsenham Community Association Meeting	Memorial Hall 7.45pm
Thu 21	Elsenham WI	Memorial Hall 7.45pm

### **Mobile Library**

**Every third Thursday at Glebe End 11.50 am to 12.20 pm**

**July 7 & 28**



## Elsenham Village Regular Weekly Activities

Day	Time	Activity	Location
Monday	9.30-10.30am	Zumba	Memorial Hall
	10.30am	Health walk	Start at De Mandeville Green
	7.30-8.30pm	Shape to the beat	Memorial Hall (not 1st Monday)
Tuesday	4.45-5.45pm	Rainbows	Memorial Hall (term-time)
	6-7.30pm	Brownies	Memorial Hall (term-time)
	8-10.30pm	Tennis Club night	Tennis Courts
	8pm	Fitness Yoga/Pilates	Memorial Hall
Wednesday	9.45-11.30am	Tots & Toddlers	Memorial Hall (term-time)
	5.30-7.30pm	Slimming World	Memorial Hall
	5.45-6.45pm	Beavers	Henham Village Hall (term-time)
	7-9pm	Scouts	Henham Village Hall (term-time)
Thursday	9.30-11am	Slimming World	Memorial Hall
	6.30-7.45pm	Cubs	Henham Village Hall (term-time)
Friday	10-11am	Little Fishes	Memorial Hall (term-time)
	5.45-6.45pm	Beavers Group 2	Henham Village Hall (term-time)
Saturday	9am-12pm	Junior Football	Playing Field
	8.45-9.30am	Little Kickers Mighty	Village Hall (term time)
	9.35-10.20am	Little Kickers Junior	Village Hall (term time)

## From The Parish Registers

### Funerals:

Service of Thanksgiving on 17<sup>th</sup> June 2022 at Henham Church, followed by interment of ashes in the graveyard, Edward (Ted) Wilshire, formerly of Crow Street, Henham.

Church Office	01279 814285	Anna Hicks
Church e-mail address		<a href="mailto:office@heuchurch.co.uk">office@heuchurch.co.uk</a>
Church web-site address		<a href="http://www.heuchurch.co.uk">www.heuchurch.co.uk</a>

Enquiries about thanksgivings, baptisms, weddings and funerals should be made in the first instance to Anna Hicks at the Church Office 01279 814285.

# Essex Autospray

**Your local Collision Repair Centre - Est 1982**

- Free Courtesy Cars
- Free Estimates
- Low Bake Ovens
- Blackhawk Alignment



**Tel: 01279 816296 E: [info@essexautospray.co.uk](mailto:info@essexautospray.co.uk)**

**[www.essexautospray.com](http://www.essexautospray.com)**

*M11 Business Link, Parsonage Lane,*

**TDC ELECTRICAL**  
Domestic Electrician

Call for your free quote  
**07960 941 138**

**AREAS COVERED**  
Elsenham  
Bishop's Stortford  
Harlow  
Cambridge  
and everywhere  
in between

**ELECTRICAL SERVICES**

- Installations
- Maintenance
- Fault-Finding
- New Consumer Units

[contact@tdcelectrical.com](mailto:contact@tdcelectrical.com) [www.tdcelectrical.com](http://www.tdcelectrical.com)

## HANDY MAN SERVICES

### NEW YEAR LOOK AROUND THE HOME

All decorating in any colours using Dulux paints. All new flooring installs any type light wood, dark wood and oak. Electrical new lighting LED, fittings, sockets, switches change to chrome/brass. Alterations to out houses, garages to extra room, dining room, office and many more.

**Call Dennis Free Quote  
07946 231302**

# THE NEWS REPORT

*From The Editors*

---



It seems that some of the social issues that come with larger conurbations are making their way to Elsenham.

Last month we had a plea from the Neighbourhood Watch team for more volunteers to man the speed guns (their ad is repeated this month on page 44) and this month we have details of concerns about HGVs using the village roads (see Parish Council report page 7). Let's be honest, the roads are becoming more crowded and, as a result, more dangerous. Please help if you can.

It would be nice to understand how Henham gets a nice new speed sign that smiles sweetly if you are driving at the correct speed but glares fiercely if you are over the limit. Elsenham Drag Strip (Stansted Road to the rest of us) is not seen as needing such improvement.

Quendon also has far more regular police speed checks, which is normally two motorcycle officers tucked out of the way. Could they visit us one day please?

On top of those concerns, the Parish Council would welcome some new blood, this publication would love a few more people to help out, and the Guides are lost to us for at least the next six months due to maternity leave and no-one willing to step in for a short period. Are we really a small village community any more?

All that said, Elsenham is still a good place to live and, if you are lucky enough to be a young family, this area has a lot to offer you. Please enjoy it and please consider giving a little something back. You reap what you sow, as they say.

Finally, we hope you all enjoyed the village fete and we will bring you reports on the event in next month's issue.

If there are any topics you want covered in this publication, please send us an email. We would really like to hear from you.

Have a great Summer!

---

## Regular features

Parish Council	Pg7	Ray's Reflections	Pg29
Development Developments	Pg9	Natural Outlook	Pg31
Women's Institute	Pg19	Tennis Club	Pg39
Elsenham Flower Society	Pg21	Bowls Club	Pg39
Neighbourhood Watch	Pg21	Cookery Corner	Pg43
Church Calendar	Pg25	Book review	Pg45
History Society	Pg27		

## Luxury Toilet Hire (UK) Ltd



Whether you are arranging a wedding, private party or corporate event, let Luxury Toilet Hire (UK) Ltd provide you with the perfect toilet facility to make your occasion a memorable success.

Cesspit emptying also undertaken.

Tel: 01371 873003 or 01279 504638

Email: [info@luxurytoilethire.co.uk](mailto:info@luxurytoilethire.co.uk)

Web: [www.luxurytoilethireltd.co.uk](http://www.luxurytoilethireltd.co.uk)



We also hire out mobile fridge and freezer units.



Please contact us for a quote:

Tel: 01371 873003 or 01279 504638

Email: [info@chillermatic.com](mailto:info@chillermatic.com) Web: [www.chillermatic.com](http://www.chillermatic.com)

# replaceglaze.com

Replace, Repair & Revive Your Double Glazing

All types of double glazing repairs, maintenance & installations, including emergency callouts. At [replaceglaze.com](http://replaceglaze.com) we provide a reputable, family-run double glazing repair & installation service.

Our services include:

- Double glazing installations, repairs & maintenance
- Aluminium, composite & uPVC installations
- Windows & door handles
- Locks & hinges
- Misted units
- Patio door wheels
- Door adjustments & lubrication
- Aluminium bifolding doors
- Composite doors
- Aluminium/uPVC roof lanterns



01279 282997 01371 701000

[info@replaceglaze.com](mailto:info@replaceglaze.com) [www.replaceglaze.com](http://www.replaceglaze.com)

[replaceglaze](#)

*Fiona Gardiner*

SKIN & BEAUTY CLINIC  
ELSENHAM

**Discover  
Skin  
Confidence**

At Fiona Gardiner  
Skin and Beauty Clinic

AWARD WINNING 2021  
SKIN THERAPIST

- Cryopen Blemish Removal (Skin Tags, Warts, Sun Spots)
- Facial Rejuvenation
- Expert Laser Skin Treatments
- Clinicare Skin Peels & Facials
- Microdermabrasion & Dermaplane
- Botulinum Toxin Injections

SKIN SCANNING  
WITH  
OBSERV 320  
TECHNOLOGY

SKIN  
CONSULTATIONS  
JUST  
£25!

Elsenham, Essex  
07858482728

facebook @fionagardinerbeauty



# ELSENHAM PARISH COUNCIL 6 JUNE 2022

By Louise Johnson, Clerk. ✉ [louise.epc@gmail.com](mailto:louise.epc@gmail.com) ☎ 07456 791727



There is great concern about the number of HGV lorries driving through the village and then causing congestion at the traffic lights on Grove Hill. Many of these lorries are transporting soil from Hertfordshire and depositing it in Essex, but Essex Enforcements ensure us they are looking into legal ways they can stop this from happening.

Enforcement measures are to be installed on the roads approaching Stansted to stop large vehicles coming through Stansted and Grove Hill. There will be a weight limit imposed in the centre of Stansted village. Automatic Number Plate Recognition (ANPR) cameras are to be installed in Stansted which will take images of vehicles' number plates. Any exceeding the weight limit will be sent a fine. There is to be a public consultation on these enforcement measures. The parish councils will receive the details first and then there will be a general consultation for the public.

The Chairman signed off the annual governance statement and accounting statement. All the Parish Council's finances have been agreed and inspected by an independent internal auditor. They will now be sent to the external auditor, Littlejohn Accountants for Parish Councils.

The Parish Council would like to thank Golf World for their donation of £300 towards the maintenance of the defibrillator, which is housed outside the doctor's surgery. This will purchase new pads and a battery when required.

The Communication Committee have been working hard to make the Parish Council's website compliant with accessibility. This will allow partially sighted people to access information on the website. As from this month the format of the meeting minutes will be changing. They will no longer be recorded as 'smart minutes' but a layout that is accessible for all to access. The Parish Council would like to thank Mrs Annie Gleeson for all her work and help she has provided to achieve this.

For clarification, Elsenham does not have any buses that run on Sundays. There is an 'all-new Bus Checker' application which can be downloaded, it allows you to plan journeys, see real-time bus information and buy tickets.

Uttlesford District Council's Local Plan is about seven weeks behind. Regulation 18 is due to be published on 15 July 2022 and this marks the start of the engagement stage of the plan for Parish Councils and the public.

The next Parish Council meeting is to be held on Monday 4 July at 8pm in The Memorial Hall.



The **Executives Choice Chauffeur Company** providing clients with premium transport at affordable prices. Airports, sporting events, theatre trips etc.

Corporate accounts welcomed.  
7 Seater available

To discuss your requirements

Contact Graham Anderson: [graham@execschoice.com](mailto:graham@execschoice.com)

Phone 07481 494988

[www.execschoice.com](http://www.execschoice.com)

## NEED A VENUE?

Elsenham Village Hall currently has availability on Wednesday, Thursday & Friday evenings.

Introductory rate for new bookings  
(half price for first 4 weeks).

**Email Annie at:**  
[elsenhavillagehall@gmail.com](mailto:elsenhavillagehall@gmail.com)



## DEVELOPMENT DEVELOPMENTS

By *Graham Mott* ☎ 812516 ✉ [motts@grahammott.plus.com](mailto:motts@grahammott.plus.com)

---



To no-one's surprise at all, Uttlesford District Council's Planning Committee agreed unanimously at its meeting on 25 May to approve the application by Bloor Homes to build 350 homes off Henham Road. As I noted last month, some issues were resolved at a site meeting between the interested parties. The Parish Council continued to object, but by then the case was clearly hopeless.

Back in November 2020, an application was made to build 50 homes to the south of Bedwell Road, on land close to the motorway bridge. Little was heard until the usual lack of adequate notice was given that it would be before Uttlesford District Council's Planning Committee on 8 June, just in time for this report to be rushed to ***Elsenham News*** before the copy deadline at midnight.

The site is actually in Ugley parish, but hard against the Elsenham parish boundary, and an earnest councillor asserted his views while impressively wearing two hats in order to represent both parish councils. It was put to the Committee that they must defer a decision in order to allow discussions to be held on the content of a Section 106 agreement, to be implemented should the application be successful. It's generally understood that if such discussions are held, they are 'without prejudice', as the phrase has it, to the position of wholesale opposition to the proposals as a whole. The Committee resolved to defer a decision pending a site visit so that they can experience for themselves the full impact of motorway noise.

There is, in fact, plenty which is objectionable. The site is too close to the motorway, and the continuous steady noise is unavoidable. The proposed solution is to build three-storey blocks of flats on the side of the site nearest to the motorway, in order to baffle the sound. The objections to this jolly wheeze are many. It would mean that the residents of the affordable homes would, in effect, be acting as acoustic shields to the benefit of their more affluent neighbours in the market homes. It would be in direct contravention of UDC's expectations that affordable homes are distributed around the site, rather than being clustered together; and the site, at the edge of the village, is not suitable for three-storeys, especially when proposed with under-croft parking, contravening the Essex Design Guide which is supposed to act as a standard.

In another unannounced initiative, Dandara submitted more than 40 new documents relating to their detailed application to build 99 homes, roughly half each off Isabel Drive and off Stansted Road. It looks as if the changes are of some consequence, but at the time of writing there has not been time to review them.

UDC were asked for adequate time for consideration and sprang a surprise by agreeing. If the developers answer previous objections to the scheme, that will also be a surprise - comparable with UDC managing to keep to their schedule for implementation of the new Local Plan. The latest news is of a seven-week delay, with details now scheduled to be made known on 15 July.

# **Do-It-4U**

## **Repair, Care & Maintenance**

For your Home and Garden

- ◆ **Plumbing, Electrical & Carpentry Services**
- ◆ **Drain Blockages Cleared**
- ◆ **Gutters Cleaned, Repaired or Replaced**
- ◆ **Gardens Tidied & Maintained**
- ◆ **Hedges & Topiary Trimmed & Shaped**
- ◆ **Fences Erected & Repaired**
- ◆ **Sheds & Other Sectional Buildings Erected**

**Telephone**  
**01279 814411**  
**Mobile**  
**07774 877320**

## **Naomi** **Gardening & Design**

*Creating outdoor spaces for living*



Garden maintenance & advice



Garden design & consultation



Bespoke planting designs

Call for a free estimate

M: 07778 620576

E: [Naomi@NaomiGardenDesign.co.uk](mailto:Naomi@NaomiGardenDesign.co.uk)

W: [www.NaomiGardeningandDesign.co.uk](http://www.NaomiGardeningandDesign.co.uk)

*Trained at Capel Manor College*

## **CHIROPODIST & PODIATRIST**

**Bishop's Stortford**

- **Orthotics**
- **Diabetic Foot Care**
- **Saturday Clinics**
- **Routine Treatment**

**R. Handford & Colleagues**  
H.C. P.C Registered

**Bishop's Stortford - 16 Hockerill  
Street**

**01279 652249**

[www.feet.org.uk](http://www.feet.org.uk)

# ELSENHAM C. OF E. PRIMARY SCHOOL

By Linda Todd, Headteacher



It was lovely to see so many of the Elsenham village community join the school for our annual FOES fete back on May 14<sup>th</sup>. There was a wonderful atmosphere, the weather was kind and we raised an amazing amount of money—£4000 - towards our wellbeing room.

Our wellbeing room has since been installed and has excited our children and staff with the wonderful lighting controlled by a large soft dice, amazing light tube, fibre optic curtain, bean bags, sensory wall, music and aromatherapy. It is a special place for calm and for meeting the emotional and sensory needs of our children. Thank you to all those who helped us to raise the funds needed for this.



The end of May saw us joining in with the Platinum Jubilee celebrations. The children dressed in red, white and blue, whilst the staff provided them with a quiz by dressing in the style of a decade. We held our own street party with the Queen joining us as our special guest (well cardboard style as apparently, she was quite busy!) We took part in lots of creative activities on the Jubilee theme, including decorating loo rolls to depict favourite Royals and creating flower jars which were sold at the end of the day as a fund raiser.



# YOUNG'S

## WINDOW CLEANING SERVICE

We specialise in residential properties offering a quality and regular service for exterior and interior cleans  
Serving the Elsenham community for the last 10 years

Call or text Malcolm for a FREE quote  
07817 481901

## **MASKALLS** **TREE SURGERY**

Small family business

Big expertise  
in trees

Call George

M: 07982 601 570 | T: 01279 819 127

email: [george@maskalls.co.uk](mailto:george@maskalls.co.uk)

[www.maskalls.co.uk](http://www.maskalls.co.uk)



All types of tree care & hedge cutting undertaken.  
Call for a free estimate.



## Summer Reading Challenge 2022

Get ready for Gadgeteers, arriving in your local library this summer.

### A library card for every child!

Essex Library Service wants every child to experience the joy of reading. That is why we are giving every pupil in Essex a library card as part of our Essex Year of Reading campaign. By now, most pupils will have received their library card and a campaign bookmark from their school. All you need to do is take it to any Essex library to activate it and start borrowing. As well as access to thousands of books, Essex Libraries also offer e-books, e-audio and e-comics.

If you haven't had the card, don't worry. Just go into your local library and ask to join. (You will need ID such as a driving licence, bank statement or recent utility bill.) It's free, it's quick and it's easy. More about Essex Year of Reading at [essex.gov.uk/news/essex-year-of-reading](http://essex.gov.uk/news/essex-year-of-reading).

### Harlow Library has reopened

Harlow Library opened again for the public on Monday 20 June. The improved library space includes good stocks of books, a café, a large, vibrant, exciting children's area, quiet spaces, a literacy area, a modern, flexible layout that can be used for events and gatherings, and an event and exhibition space on the first floor in partnership with Adult Community Learning.

Children across Essex are being challenged to help the Gadgeteers by reading six books and earning cool stickers. Along the way they'll discover amazing science and innovation in the world around us. If they complete the challenge they receive a certificate and medal. Find out more about how to take part in this free activity on our website:

[libraries.essex.gov.uk](http://libraries.essex.gov.uk)

**Saturday 16 July to Saturday 3 September**

Presented by The Reading Agency.  
Delivered in partnership with libraries.



We hope you'll come down and discover the amazing work that's been happening behind the scenes. We've missed you!

Also save the date, Saturday 2 July, when we will be having our official launch celebrations from 10.30am onwards. Special guest Jeff Brazier will be joining us, and activities will include a rhyme time, a storytelling performance with Live Wire, a children's craft session and an exhibition by Harlow Museum. No need to book – just turn up.





**Double Glazed Units – SAME DAY**

- Table Tops
- Shelves
- Emergency Glazing
- Replacement Misted Double Glazing
- Greenhouse Glass
- Cat and Dog Flaps Fitted
- Splash Backs – Any Colour
- Glass Cut To Size
- Emergency Boarding
- Safety Glass
- Mirrors

**LOCAL COMPANY – GREAT PRICES – RELIABLE PROMPT SERVICE**

**Elsenham – Great Dunmow – Bishops Stortford - Stansted**



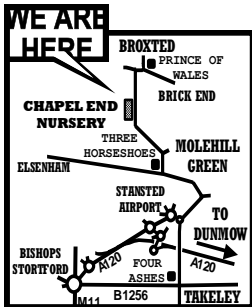
**S. PERRY  
CHAPEL END NURSERY**

**HANGING BASKET & TUB PLANTS  
VEGETABLE PLANTS HERBS & BEDDING  
SEED POTATOES ONION SETS &  
SHALLOTS**

**DECORATIVE BARK  
FARMYARD MANURE  
SEED & CUTTING COMPOST**

**HORTICULTURAL GRIT  
COLOURED GRAVELS  
PEBBLES COBBLES**

**GODWINS  
MULTIPURPOSE COMPOST  
60 Litre Bag  
£6.50 EACH 3 For £17**



**COUNTRY VALUE SEEDS  
Most 99p per PACKET  
Mr Fothergills Seeds  
Buy 5 Packs get Cheapest Free**

**OPEN 9am to 5 pm  
MONDAY TO SATURDAY (CLOSED SUNDAYS)  
MOLEHILL GREEN ROAD  
BROXTED DUNMOW ESSEX CM6 2BW  
01279 850771  
www.chapelendnurserysperry.co.uk**

**VEGETABLE PLANTS  
BASKET & TUB PLANTS  
ALPINES  
HERBACEOUS  
ROSES  
HERBS  
SERUBS  
POND PLANTS  
AQUATIC COMPOST  
GODWIN COMPOST  
WILD BIRD FOOD  
SUNDRIES**

## SCOUTING NEWS

By Matt Morland (Akela) ☎ 07423 620120

✉ 1sthenhamandelsenham@gmail.com



Half term has provided a somewhat short but well needed break for our leadership team who have been hard at work running our Colony, Pack and Troop meetings and activities, taking advantage of what has so far been fairly pleasant weather-wise (hopefully I've not put a jinx on it!).

Beavers have taken part in cycle and road safety activities towards their Cyclist Badge, spent an evening with the Human Roots Charity in Stansted working towards their Gardener Activity Badge and activities for their Jubilee Badge, while our Cubs (who have recently voted to name their Packs "Wolf" and "Bear") have been practising their campfire skills at a backwoods cooking evening and Scouts taking part in a Taskmaster evening involving lots of water, cream crackers, spaghetti and marshmallows.



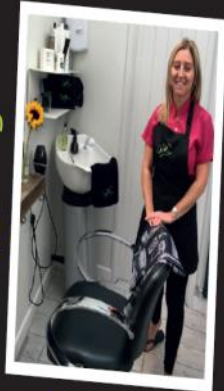
Our Cubs and Scout Sections have been busy preparing for the upcoming Mega and Epic Camps and also had the opportunity to take part in an archery session run by our District Scout Active Support team, who are a valuable resource comprising of retired Scout Leaders who support all scouting in the district with staff, equipment and expertise free of charge which would otherwise incur charges for the Group if we used external providers.

As part of preparations for upcoming camps our leaders have been busy preparing inventories of the equipment required and available to the Group. This is no easy task considering the limited storage we have and also the need for more equipment as our Group expands. We have been very lucky to receive significant donations from Uttlesford District Council and Golf World Stansted to purchase thirteen 3-person tents which means we now have enough tentage to allow all Beavers, Cubs and Scouts (and their Leaders) to attend camps if they wish. We would all like to give a huge "thank you" to both of these organisations for their generous support.

And finally, a further request for assistance in recruiting for a number of support roles within our Group, most urgently is the need for a new Group Secretary. The role predominantly assists the Group Chair in arranging our Executive Committee meetings (4 meetings a year), minute-taking and distribution, record-keeping and liaison with the Scout District.

Please get in touch if you are interested in volunteering with our Group and would like to know more about this or other roles.

★  
★  
★  
**Clare's** Gents hair stylist  
@ Rickling Green



★ Appointments from  
7am Mon-Sat

★ FREE easy parking

★ Fully qualified  
& insured

Call: 01799 542424  
Text: 07791 058406

City &  
Guilds  
Qualified 

## hpc (State Registered) Chiropodist

CH09088

Home Visiting Practice

Mrs. Julie Golden

Est. 1994

01279 873492

A professional service at a  
competitive rate

# TAKELEY IRONING & DRY CLEANING

OPENING TIMES  
MONDAY - FRIDAY 8AM - 5PM  
SATURDAY 8AM TO 12PM

## FREE LOCAL COLLECTION & DELIVERY TO YOUR DOOR

Takeley, Elsenham, Henham, Stansted, Felsted, Hatfield Broad Oak, Hatfield Heath, Sheering, Dunmow, Sawbridgeworth, Broxton, Spellbrook, Molehill Green, Broxton, Little Canfield.

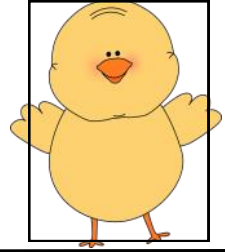
- ✓ WASHING & IRONING
- ✓ IN HOUSE DRY CLEANING
- ✓ 48 HOUR SERVICE
- ✓ DUVETS
- ✓ CURTAINS
- ✓ ALTERATIONS
- ✓ WEDDING DRESSES

The Centre, Dunmow Road (Behind Londis)  
Takeley, Bishops Stortford  
Herts, CM22 6SH

Email: [takeleyironing@gmail.com](mailto:takeleyironing@gmail.com)  
[takeleydrycleaning@gmail.com](mailto:takeleydrycleaning@gmail.com)

Tel: 01279 871245





**Daisy May's Farm**  
Hall Road, Elsenham, CM22 6DN

We are SO excited as once more our fabulous **woodland campsite** is **OPEN** and we are ready to receive guests! You can stay in the woodland area and get back in touch with nature or stay in our camper/caravan paddock where there is lots of space and lovely scenery. All of these options obviously include entry to the farm where you can meet our lovely animals and all their babies.....what a fabulous holiday and all for just £25 a night AND on your doorstep! Please message us through our Facebook page to book.

As if that wasn't enough, we still have babies of all sorts everywhere..... Chicks, ducklings and you can even cuddle the lambs and kid goats and trust me, they don't come much cuter!



We have a fabulous safe area to play in, a stream to splash in, a woodland trail to explore, ice creams to be slurped and crafts to be created and more!

Entry is £5 (under 1's free) and it really is a fabulous day out for all the family.



Weekdays we are open 9am - 3pm and Saturday from 10am - 4pm and please note, we are closed Wednesdays and Sundays. For further information, always check our Facebook page.

There really is so much to do and see at the farm and our animals just love seeing you all. So do be sure to come and see us over the summer. Can't wait to see you.

We **always** need help in so many ways, particularly when there is **so** much to do. So if you have a little time to spare, **please** get in touch, we would **love** to hear from you. Please contact ' 07747 787973 or take a look at our website 8 [www.daisymaysfarm.org](http://www.daisymaysfarm.org) to find out more. Thank you so much.



**T.J. Patmore**  
Building Services

Extensions – Loft Conversions  
Roof work – Carpentry – Roof Tiling  
First and second fix carpentry  
Kitchen fitting  
Built in wardrobes  
Decorating interior and exterior  
Floor and wall tiling  
Fencing – Decking – Patios  
Supply and fix u.p.v.c. windows  
House maintenance

*Call Trevor for friendly help, advice  
and FREE estimates*

mob 07932 666224

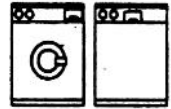


**ANGLIA**   
ELECTRICS

Established 1972  
Domestic Appliance Repair Service

We offer Specialist Dishwasher,  
Refrigeration & Cooker Service, in addition  
to our long established and renowned  
Washing Machine Service

Our Engineers are  
Experienced and  
Trained to service  
most makes



**01279 658767**

**Friendly Prompt Service**



**LOGS LOGS LOGS**

- Well seasoned hard wood
- Transit load / bulk builder bag
- Cut to fire size

Call today ☎ 01279 718555  
Or email ✉ [dar13@mail.com](mailto:dar13@mail.com)



**N.M.S**  
*Window Cleaning*  
Service

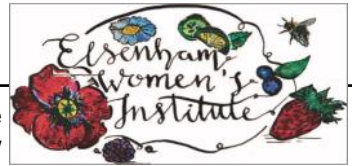
Cobwebs removed, Windows,  
Frames and sills washed,  
doors cleaned as required.

Water fed pole system  
Traditional

**07470291463**

# ELSENHAM WOMEN'S INSTITUTE

By Moyra Jackson ☎ 647351



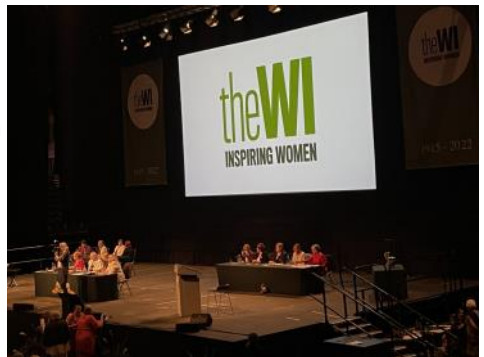
This time of year is Annual Meeting Season for the WI. Our own Annual Meeting was in May and our new Committee is already working hard with all the events we have coming up.

The National Federation of WIs held their Annual Meeting in Liverpool and this year Gill Hathaway, Gloria Eatson, Jo Lushey and I represented Elsenham WI, travelling with a wonderful coach full of members from all over Essex. We were enjoying a leisurely breakfast in our hotel before the meeting and a stranger wearing a WI Badge asked if she could join us. Surprise, surprise it turned out to be Barbara Ball, a former Chair of Essex Federation who now lives in Yorkshire and had visited Elsenham WI in the 1980s and remembered it very fondly.

It was lovely mingling with so many women from the length and breadth of England and Wales in the M&S Bank Arena. The meeting itself was the usual mix of business and inspiring speakers. It began with 3,500 voices in unison singing 'Jerusalem' – always a truly moving and uplifting experience. This year's resolution was passed by 96.5% of members so our latest campaign will be to call for better diagnosis of women with ASD and ADHD. They had wonderful speakers debating for and against the motion. The main speaker of the day was Sarah Clarke OBE who in 2017 became the first female Black Rod, and the link between the three elements of power in government; the House of Commons, the Lords and the Monarchy. She was a fabulous speaker – very natural and unassuming with a great deal of humour and an appreciation for the WI movement.

At the end of the month we will be off on our travels again with even more of our members, this time only as far as Colchester for the Federation of Essex WIs Annual Meeting and the main speaker will be Jennie Bond, former Royal Correspondent.

Our July Meeting is **"A - Z of Roses with Simon White"**. This will be the first 'Open Meeting' we have held in many years and this is open to all including men! There will be our usual charge of £3 for all visitors with tickets available at the door and we look forward to having a full house.



*Details of our programme, events and activities can be found on Facebook, Twitter and Instagram – search for Elsenham WI. Visitors are welcome to our monthly meetings so please come along. We meet at 7.45pm on the third Thursday in the month in the Memorial Hall.*  
**Elsenham WI – There's a lot going on!**

Spellbrook Garden Design

**DRIVEWAY & GARDEN DESIGN**

- ✓ Decorative Walling and Fencing
- ✓ Patios & Paths
- ✓ Block paving, Tarmac and Graveling
- ✓ Decking
- ✓ Turfing, Garden design and build
- ✓ Stone cleaning

spellbrookgardendesign.simdif.com

Tel: 07799 603089/ 01279 503936 / 0800 696 5257

Westwoods, London Rd, Spellbrook CM23 4AH



Checkatrade.com

MyBuilder.com



**DECORATING SERVICES  
ALL ASPECTS OF DIY**

**NO JOB TOO SMALL**

**For a friendly reliable service  
Just Ask.....**

**GARY KING**

**Home : 01279 850001**

**Mobile : 07951 452602**

**g.king962@btinternet.com**

**Options Hair Design and Hair Loss Clinic**

**An essential choice with a passion for hair**

We welcome you with a complete in-depth consultation, whether this is for a change of style or colour or for more clinical advice on the health of your hair and scalp.

For clients visiting The Hair Loss Clinic we are able to offer a completely private consultation and treatment room away from the main salon. We offer proven treatments for hair loss and also provide a complete wig fitting and finishing service. We work closely with a leading UK Trichologist who holds regular clinics with our clients.

Our products are organic and formulated to enhance your hair health. Our dedicated stylists will work with you to achieve the look and feel that you want. Our salon has parking right outside and a warm welcome awaits you.

**Elsenham Salon 01279 812665**

Bookings not always necessary

Hair Loss Clients please call Ann on  
07957 166436



[www.optionssalon.co.uk](http://www.optionssalon.co.uk)

## ELSENHAM FLOWER SHOW SOCIETY

By Sue Johnson ☎ 812704

✉ susanjohnson09@hotmail.co.uk



---

To all of you who so generously supported our May Plant Sale, either by growing plants or buying them, we would like to extend a huge thank you. We raised over £800, putting the Society in a great position to provide a wonderful Flower Show in August.

Elsenham Flower Show – Date for your diary – Saturday 20th August 2022!

All being well, the 2022 Flower Show schedule will be repeated in the centre pages of the August Elsenham News, together with rules and entry forms. Watch out for next month's magazine.

---

## NEIGHBOURHOOD WATCH

By Frances Lambert ☎ 07771 728332



---

We have received another report from **Action Fraud** that it had received **752 reports in four days relating to fake emails purporting to be from Ofgem.**

The emails state that the recipient is eligible for a rebate as a result of a newly announced government scheme. The links in the emails lead to genuine-looking websites that are designed to steal your personal and financial information.

The scammers are becoming more and more inventive with their emails, making them much more believable to many people, remember the old saying "If it looks too good to be true, it probably isn't, and it is probably a fake".

Before you respond to any suspect emails **Remember, your bank, or any other official organisation, will not ask you to share your personal information over email or text. If you need to double check that it's a genuine message, contact the company using details from their official website or app.**

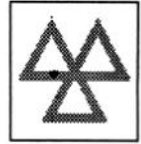
If you have spotted a suspicious email forward it to the Suspicious Email Reporting Service (SERS) - [report@phishing.gov.uk](mailto:report@phishing.gov.uk)

***For more information on how to stay secure online, please visit:***  
[www.cyberaware.gov.uk](http://www.cyberaware.gov.uk)

If you have any information regarding incidents contact Essex Police on '101 or Crimestoppers anonymously on ' 0800 555 111.
--

# **GARRETT'S** GARAGE SERVICES

42 Golds Business Park, Elsenham  
Bishop's Stortford, Herts CM22 6JX



- Mechanical Repairs
  - Servicing
  - Tyres
  - Engine Tuning
  - Computer Diagnosis
  - Windscreen Repairs
  - M.O.T.'s - Catalyst & Diesel Tested
  - E.H.D.C. - Authorised Hackney Carriage Testers
  - Batteries
  - Exhausts
- MODERN WELL MAINTAINED WORKSHOP*
- ALL MAKES OF VEHICLE*
- \*FREE COLLECTION AND\*  
\*DELIVERY SERVICE\**

**TEL: 01279 647777    FAX 01279 817622**

## **NEW BEGINNINGS COUNSELLING**

**A safe environment to explore your thoughts and feelings**

A private practice with parking based in Takeley  
Represented by Michele Simpson MBACP

**Ever felt sad, overwhelmed, lost or just not quite right?**

Most people at some point in their lives have felt so overwhelmed that they find it impossible to see a way out of a situation

My beliefs are that everybody has the resources within themselves, given the right environment, to experience therapeutic change

Why not give me a call to see how I can help you to improve your life  
Counselling could enable you to have that new beginning

phone: 07956 224954 or 01279 879009

email: [ms@newbeginningscounselling.co.uk](mailto:ms@newbeginningscounselling.co.uk)  
[www.newbeginningscounselling.co.uk](http://www.newbeginningscounselling.co.uk)

## St Clare Hospice, Hastingwood Road, Hastingwood, Essex CM17 9JX

[www.stclarehospice.org.uk](http://www.stclarehospice.org.uk)



### **Our perennially popular “Open Gardens” is back – now in its 28th year**

We are delighted that there are more than a dozen fab-u-lous gardens, large and small, on show this year across West Essex and East Herts in aid of St Clare Hospice. You can enjoy them on weekends throughout June and July. Come and explore some of the best-kept green spaces in our catchment area, many with refreshments.

Find out more at <https://stclarehospice.org.uk/event/open-gardens-2022/>

### **Step Up to fund St Clare’s care this July**

Dani De’ath, Challenges and Events Fundraiser said, *“Could you Step Up and help us? We are challenging you to walk, skip or run 10,000 steps or maybe cover the 4.5 mile distance on your bike or swim your way to the total. However you choose to do it, you must do it every day to give you a grand total of 139 miles throughout the month of July. Did you know that 10,000 steps are the average distance a nurse does in a single shift! , There is no entry fee, but we ask you to raise as much as you can in the month with sponsorship. Just £200 could pay for a night sitter to stay with one of our patients whilst their family get some much needed rest, secure in the knowledge that their loved one is being expertly cared for. This gives the family a much needed break in very difficult times. You really will be making an incredible difference by taking part in Step Up. Every person who takes part gets a St Clare Hospice T-shirt and the personal satisfaction that they have helped us continue to care for local people.”* If you would like to take part, call Dani on 01279 773738.

### **St Clare Summer Party**

On Friday July 1, from 5pm, St Clare Hospice is hosting their Summer Party, with live music from local musicians, at the renowned Redchurch Brewery. They will be serving their exquisite collection of draught and bottles beers. Stort Valley Spirits will boast their refreshing gin stall. From 6pm, delicious food will be served street-food-stall-style by local businesses, including Slow Dough Pizza Co. and Smoke BBQ Kitchen. Book a ticket today! Each ticket includes a Redchurch beer or exclusive ‘St Clare Cooler’ cocktail upon arrival. Every ticket sold helps raise vital funds . Please note that this event is for people aged 18+ only.

Get your ticket at: <https://stclarehospice.org.uk/event/summer-party-2022>

Redchurch Brewery 15 - 16 Mead Park Industrial Estate, Harlow, CM20 2SEU.

**Calling all local businesses** – if you would like to join the St Clare Corporate Partnership Networking, you get early entry to this event and enjoy a Happy Hour. The Corporate Partnership Network (CPN) is an opportunity for local businesses to support the hospice whilst, at the same time, being part of a local business network There are some great businesses involved already from sole traders to larger organisations. Find out more here: <https://stclarehospice.org.uk/event/happy-hour/> or call Charlotte Durham on: 01279 773753.

# ST MARY'S CHURCH ELSENHAM

Office@heuchurch.co.uk

## Thought For The Month

I wonder if there are any reading this that, like me, are looking forward to having a holiday this year after several years of not being able to get away.

One of the reasons we are particularly looking forward to going away this year is that having 2 boys, 20 and 17, we are not sure just how many more family holidays we will have together - although I have been reliably informed that if mum and dad choose a really cool location and pick up the bill, then children, however old, are sure to come along. Holidays are a time of rest, to take time out from the normal pattern of life.

For some, it might mean time away and for others it is having a staycation, enjoying the garden, or visiting friends. These rest times are an important part of life and are much needed to recharge our batteries and take stock of what is happening in our lives.

And God realises the importance of rest and He has done since the beginning of time. The first book of the bible is Genesis and it opens with an account of how the world was created. It is an orderly account of how over six days God created the world. The length of each day as God views a day will have many sharing different interpretations and opinions but the important part of this account is that God completed His creation in six days and rested on the seventh day. So, we see that rest is central to how God intended His world to work.

The Jewish nation of the Old Testament called this day the Sabbath

and it was a day set apart from the rest of the week to praise God and to keep the day free from work.

Traditionally in the western world, Sunday was set aside as a rest day until quite recently. Perhaps modern times just do not lend themselves now to a day in the week that is a special day of rest. Before I retired, my work commitments meant sometimes I needed to work through the night or at weekends. It meant all too often I ignored God's provision of a day of rest he built into creation and I really suffered for it.

Going back to Genesis and the account of the creation of the world and the rest day, Genesis ch2v2 says "By the seventh day God had finished the work he had been doing; so, on the seventh day he rested from his work". I want to close by saying that the seventh day, the day of rest, has far more significance than just a day off work or a holiday. Unlike the six days prior in the creation account, the seventh day does not end. This is God's invitation that everyone can share in His rest, and this spiritual rest can only be found in Jesus. In Matthew's gospel ch11v28 Jesus says "Come to me all you who are weary and burdened and I will give you rest".

So, I trust this summer we can all have some much-needed rest and when the holiday is over, we can be assured of the greatest, most fulfilling and lasting rest, found only in our creator God through His Son Jesus.

**Rocky Stevens, Churchwarden.**



# CHURCH EVENTS IN OUR VILLAGES JULY 2022

## Church Services

### St Mary's, Elsenham 8.45am

Sun 3 Joint service at Henham  
Sun 10 BCP Morning Prayer  
Sun 17 BCP Holy Communion  
Sun 24 BCP Morning Prayer  
Sun 31 BCP Morning Prayer

### St Peter's, Ugley 10.00am

Sun 3 Joint service at Henham  
Sun 10 Morning Service  
Sun 17 Morning Service  
Sun 24 BCP Holy Communion  
Sun 31 Morning Service

### Elsenham Village Hall 10.15am

Sun 3 Joint service at Henham  
Sun 10 Morning Service  
Sun 17 Holy Communion  
Sun 24 Morning Service  
Sun 31 Morning Service

### St Mary's, Henham 11.15am

Sun 3 Joint Benefice Service  
Sun 10 Morning Service  
Sun 17 Morning Service  
Sun 24 Holy Communion  
Sun 31 Morning Service

### St Mary's, Henham 6.00pm

Sun 3 Sunday@Six  
Sun 10 Sunday@Six  
Sun 17 Sunday@Six  
Sun 24 Sunday@Six  
Sun 31 Sunday@Six

## Other regular events

### SUNDAYS

#### St Peter's Junior Church

#### St. Peter's Church

10.00am Sundays: 10<sup>th</sup> & 17<sup>th</sup>

#### Elsenham Sunday Club/Explorers

#### (Y1-Y5) Old Frank's, Elsenham

10.15am Sundays: 10<sup>th</sup> & 17<sup>th</sup>

#### Henham Sunday Club/Explorers

#### (Reception-Y5) Church Hall, Henham

11.00am Sundays: 3<sup>rd</sup>, 10<sup>th</sup> & 17<sup>th</sup>

#### Pathfinders (Y6-Y9)

#### St Mary's, Henham 6.00pm - leave from service to meet in OSCA

Sundays: 3<sup>rd</sup>, 10<sup>th</sup> & 17<sup>th</sup>

#### Crammin' (Y10-Y13)

#### St Mary's, Henham 6.00pm followed by 6.45pm at the Church Hall, Henham

Sundays: 3<sup>rd</sup>, 10<sup>th</sup> & 17<sup>th</sup>

### MID-WEEK AND SATURDAY

#### Start the Week with Prayer

#### Church Hall, Henham 9.30am

Mondays: 4<sup>th</sup>, 11<sup>th</sup>, 18<sup>th</sup> & 25<sup>th</sup>

#### Benefice Prayer Supper

#### Church Hall, Henham 7.30pm

Mondays (4<sup>th</sup> of each month) 25<sup>th</sup>

#### Seekers After School Bible Club

#### (Y3-Y4) Old Franks, 3.15pm

Mondays: 4<sup>th</sup> & 11<sup>th</sup>

#### Christian Play (Y1-Y2)

#### Rowan House, Elsenham 3.15pm

Tuesdays: 5<sup>th</sup>, 12<sup>th</sup> & 19<sup>th</sup>

#### Little Fishes Pre-School Group

#### Church Hall, Henham 10.15am

Thursdays: 7<sup>th</sup>, 14<sup>th</sup> & 21<sup>st</sup>

#### Little Fishes Pre-School Group

#### Elsenham Memorial Hall 10.00am

Fridays: 1<sup>st</sup>, 8<sup>th</sup>, 15<sup>th</sup> & 22<sup>nd</sup>

#### Church Lunch Club

#### Elsenham Memorial Hall 12.30pm

Fridays (2<sup>nd</sup> & 4<sup>th</sup> of month): 8<sup>th</sup> & 22<sup>nd</sup>

#### Afternoon Tea

#### OSCA, Henham 2.00pm

Saturday (3<sup>rd</sup> of month): 16<sup>th</sup>



*Insurance Certificate supplied - Fully Insured - Free Smoke Test*  
Open Fires - Multi Fuel Stoves - Aga - Rayburn - Gas - Oil Stove installations

**CCTV Surveys - Bird Nest Removal  
Local Business**

**Tel: 0800 112 3600**

**Mob: 07918 708626**

[www.stephenschimneysweep.co.uk](http://www.stephenschimneysweep.co.uk)

 **S.E.P**   
**TREE CARE & GARDEN MAINTENANCE**

Tree Topping & Felling  
Pruning & Pollarding  
Hedges cut, Trimmed & Removed  
All waste Chipped & Removed  
Garden, Garage & Site Clearance  
Gravel Driveways & Paths  
Fencing

Turf Supplied & Laid  
Jet Washing Paths & Driveways

Local Tradesman  
20 years experience

For a free estimate Phone

**07903 621657**

**08000 588057**

14 Day Cooling off Period



  
*Janette Rickwood*  
Celebrant

**Collector, collator and  
relator of life's special  
events**

Are you planning or considering: a Memorial Service, a Funeral, Renewal of Vows, a Wedding or a Naming Celebration?

A Celebrant led ceremony will help you to create special memories of the day.

For more information please contact:

[janetterickwood\\_celebrant@btinternet.com](mailto:janetterickwood_celebrant@btinternet.com)

[www.janetterickwoodcelebrant.co.uk](http://www.janetterickwoodcelebrant.co.uk)  07889 375200

Facebook @JRCelebrant

# ELSENHAM VILLAGE HISTORY SOCIETY

By Mike Rea, Secretary ☎ 813634 ✉ evhs12@hotmail.co.uk

🌐 [www.elsenhams-history.co.uk](http://www.elsenhams-history.co.uk)

---



I am writing these notes just after the Jubilee celebrations and hope that you all had a very enjoyable time. There were no doubt many photographs taken and we would be delighted if you would share them with us. We would like to compile an album illustrating the festivities throughout the village for eventual publication on our website. If you would like to help, please send your photos to the above e-mail address.

Our speaker for the June meeting was Anthony Tuck from the Newport Local History Group, his subject Newport – A Great and Poor Town. This phrase came from the will of Joyce Frankland who in 1588 founded the Newport Free Grammar School. It was an odd phrase to use as Newport was neither great, nor a town, nor was it poor. Throughout its history it had a close association with London and London money and although it grew over the years it was never a large place.

Several times it nearly became a town. In the tenth century, Edward the Elder, having freed Essex from the Danegeld set up his Royal Court in Newport and it was thought that at one time, the Royal Mint was sited there. Edward also established a market that survived until 1141 when Geoffrey de Mandeville moved it to Saffron Walden. Although the market returned to Newport, it never recovered and went into something of a decline.

At this time Newport came into the ownership of the Duchy of Cornwall where it remained until 1550 when it was sold on. Over the next fifty years or so Newport was owned by six different Lords of the Manor including the uncle of Oliver Cromwell. At this time there was an improvement in its fortunes but never quite enough to make it to township.

Newport was a thoroughfare village built along the turnpike and it benefited when the turnpike was improved in the 18<sup>th</sup> century. Until then, Newport had been a mainly agricultural village but a century later, in 1845 the railway came to Newport bringing new people and business to the area. A Maltings was established and later a gasworks, raw material for the latter being brought in by the railway. Once more Newport had the feel of a town. The gasworks closed in 1931 when the Metropolitan Gas Co. who then owned the works laid a pipeline at great expense from Bishop's Stortford to keep the village supplied with gas. The Maltings closed in the 1970s and Newport had once more avoided town status.

At our next meeting on Wednesday 14<sup>th</sup> September (8pm in the Memorial Hall) our speaker will be Ken MacDonald from the 100 Parishes Society. The 100 parishes are a large, attractive, gently-undulating area, around 450 square miles of northwest Essex, northeast Hertfordshire and southern Cambridgeshire that is largely unspoilt and is richly endowed with many fine examples of agricultural and built heritage.

EVHS membership costs just five pounds a year and allows admission to four meetings through the year which will all feature interesting speakers on a wide variety of subjects. Visitors are very welcome to any of our meetings and pay just two pounds per evening. We look forward to seeing you there.

# Taylor Computer Services (Stansted)

On-site Computer Maintenance/Repairs

DON'T BE RESTRICTED TO OFFICE HOURS, I CAN VISIT YOUR HOME OR OFFICE DURING THE DAY, EVENINGS OR WEEKENDS AT A TIME TO SUIT YOU.

Email and Broadband Setup, Data Transfers/Data Recovery, Hardware & Software Installation, Virus & Spyware Removal & Protection, New PC Setup & Training

Call Derrick on 01279 816418 ~ 07926 289749  
Email: [Info@tcsstansted.co.uk](mailto:Info@tcsstansted.co.uk)

## SDS Installations Ltd



AERIAL AND SATELLITE SERVICES  
FOREIGN SATELLITE SYSTEMS - CCTV - EXTRA TV POINTS - SKY LINK UPS  
PHONE POINTS - HOME SIGNAL DISTRIBUTION - WALL MOUNTED PLASMA/  
LCD SCREENS - CABLES SUPPLIED AND HIDDEN

Alan Smith  
50 Sunnyside  
Stansted  
Essex CM24 8AX

01279 279012  
07771 881042  
[sdsinstallations@hotmail.com](mailto:sdsinstallations@hotmail.com)  
[sdsinstallations.com](http://sdsinstallations.com)

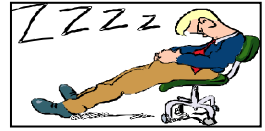
Advertise your business in  
Elsenham News  
Contact us at  
[elsenhamsnews@hotmail.co.uk](mailto:elsenhamsnews@hotmail.co.uk)



# JOHN COLEBY

## Experienced Interior and Exterior Decorator

For a friendly, reliable service please telephone  
**01279 815510 or 0793 9070818**  
for a free estimate



## *Village Shops*

Talk to older village folk about local shops when you had personal attention and service. Hear about days when flour sold by the stone, scooped from a large bin and filled into brown paper bags.

Sugar was kept in containers and sold in blue paper bags. I remember sitting in the Store with John Buttle making-up blue bags for use in the shop. Butter and lard were cut to the customer's orders. Salt broken off a large block. Housewives with a large family would purchase a half or full block. Vinegar sold by the half-pint or pint and filled into customer's own bottle. This was often a "Bishop's Stortford Mineral Water" Pop bottle!

Sweets sold in three-cornered bags. Bacon cut from roll, scales had weights. Shops had a real sense of place in the community, these days it seems that shop assistants find it hard to even smile at customers, let alone make conversation.

Making money from a village shop required a special form of expertise. In addition to being a shrewd businessman you HAD to go that little extra to supply your Customers' needs. Some of Jim's clientele were extremely well monied and requested unusual things. To fill a special "want" he would buy one bottle of Extra, extra, extra Virgin Olive Oil from, "Holland & Barretts," of B.S. it was uneconomical to purchase a case only to sell two or three over twelve months. It was explained by Mr. Buttle that Virgin Olive Oil was picked by girls who could run very, very fast!

Jim boiled his own gammon and generally did all he could to meet local needs. I remember half loaves of bread being sold with the other half going into the freezer, catering for the single person.

Ray  
Franklin

---

## **Garden Hint – Encouraging Insects**

*Encourage hoverflies into the garden by planting single-flowered French marigolds. These beneficial insects are useful pollinators as adults, and the larvae of some species are aphid predators.*

6 Oak Drive  
Elsenham  
CB22 6GB



Established  
in 2009

Friendly local Accountant  
Fixed fee Menu  
Monthly Packages to suit everyone

[www.sturgessonline.co.uk](http://www.sturgessonline.co.uk)



Call Roy now on:  
01279 817790



- alun
- design
- consultancy
- architectural design
- planning
- project management
- interior design

Local architecture  
company with over  
25 years experience  
designing and  
obtaining approval  
for new homes,  
extensions and  
conversions

Free consultation  
01799 540 600

[info@alundesign.com](mailto:info@alundesign.com)

[www.alundesign.com](http://www.alundesign.com)

Neville House, Station Road,  
Wendens Ambo, Saffron  
Walden, Essex, CB11 4LB

## NATURAL OUTLOOK ON SOME MIDSUMMER SPECIALS

By Heather Salvidge ☞ 814153

---



The long days are with us at the start of the month but it's been a funny year for things growing and some creatures behaving in non-standard ways. It has been a very good year for the low-growing, deep blue germander speedwell but, at the time of writing *not* for common spotted orchids. Early on there was the usual promise both in the Aubrey Buxton reserve and in our back garden where I counted 24 of them. It had now become obvious that I'll be lucky to get 8 in flower so we are unlikely to have any left for July. Fingers crossed, the New Road bee orchids are doing better and grasses have done very well.

Dawn chorus birdsong is diminishing but not 'evensong' which still happens on pleasant evenings especially for song thrushes, crooning doves and blackbirds. Many birds, though, are still busy with second or third broods to raise. Look out for the adults hunting out materials for nest construction and others collecting beakful of worms and grubs or bird food to feed nestlings. By now the early first broods will be away from the nest, some as early as late May, and independent. Later in July the bird moult starts, not all at the same time; some robins may start to look tatty and lose some orange feathers whereas juvenile robins have no colour on their chests, just a spotty area. Adult blackbirds might begin to look careworn and lose several tail feathers; Young goldfinches have plain faces and won't get their "make up" till later and on the water at Hatfield Forest many of the black-headed gulls are without their chocolate caps but have a pale grey spot round their eyes. The drakes on the lake may have gone into an early eclipse and look remarkably like the ducks.

Also in Hatfield Forest in some of the drier areas the purple vipers' bugloss is in mid-flower; it's at its tallest with the remaining flowers growing up the stem. In taller grasses the pink common centaury shows up, the clusters of star shaped flowers branching off the stem. The common mallow with its purple/pink flowers had been out for a while but the musk mallow now joins it, being a more soft silvery pink and not so tall.

Some moths you could find are the blood-vein, beige background which sets off the red line that runs across its wings and round their edges; about the same size is the black and white argent and sable which, given sunshine, will appear during the day as will the cinnabar moth, mid brown fore wings with two scarlet spots on each and scarlet hind wings. Its colourful caterpillars have yellow and black round stripes, have the poisonous ragwort as their larval food which it safely chomps through. Then there are several species of small beige moths. Look out, too, for hoverflies, the little black pollen beetles especially on yellow flowers - and ants.

These are just some of the inhabitants of the natural world at this time of the year as butterflies, other flowers and small animals e.g. hedgehogs are about too, see what you can find!

# THE 1:1 DIET

by Cambridge Weight Plan®



I'm a 1:1 Diet by Cambridge Weight Plan consultant offering private & personal help to lose weight. Let me help you achieve the results you want with 1:1 support and meal replacement products. Either in person or virtual appointments and orders delivered directly to your door. Over 40 delicious and nutritious products, Not just shakes!

I've helped hundreds of men and women for over eight years to achieve their goals and get results, whether it's dropping a few dress sizes or a jean size, with a plan to suit each individual's needs and medical conditions.

I offer free weekly appointments via FaceTime, WhatsApp, Texts. I'm here to offer 24/7 support.

***No sign up fee.***

***No contract.***

***What do you have to lose?***

I'm based in Church Langley Harlow and I also cover a wide area; Stansted, Elsenham, Dunmow etc .

So get in touch for a free consultation on 07816-393858 or direct message me or check out my App.

**<https://eu.jotform.com/app/220534089287360>**

**[www.one2onediet.com/Amanda\\_S](http://www.one2onediet.com/Amanda_S)**



# THE HUNDRED PARISHES SOCIETY

🌐 [www.hundredparishes.org.uk](http://www.hundredparishes.org.uk)

By Ken McDonald, Secretary



There are thousands of village halls in England, owned and run by local councils, churches or independent trustees for the benefit of local communities. The Hundred Parishes has its share, with a great variety of buildings and history.

Probably the oldest is in Hunsdon: it dates from the 15th century and was once a school. Barley's 16th-century building - once a guildhall - still looks ancient, while Westmill has a converted 17th-century barn. Ashdon claims to have the only local thatched village hall: that element of the building, once a house, dates from the 17th century. Radwinter's hall is part of village redevelopment in the arts-and-crafts style after a disastrous fire in 1874.



Many purpose-built village halls appeared after the First World War, funded either by public subscription or a generous benefactor and often built as a lasting memorial to those who died in the conflict. Ugley's hall was built in 1920, funded largely by the local Tennant family, while Blackmore End in Wethersfield benefited from the generosity of Samuel Courtauld.



Several halls have been converted from their original use: Wethersfield has a second village hall, part of what was once a brewery. Little Chesterford, Hempstead and Stocking Pelham have found new life for their old schools, while Chrishall and Stebbing re-purposed former churches. Hildersham's village

hall started life as a First World War army surgical ward and was brought from Cambridge.

Our village halls are greatly valued and used by all manner of groups for meetings, sport and exercise, pre-school activities, cultural performances, quizzes, exhibitions, farmers' markets and so on. We see new village halls appearing quite regularly, for example at Great Hornead in 2015 and Duxford in 2020. Some are now referred to as "community centres" but we know what they mean!

*The Hundred Parishes is 450 square miles of northwest Essex, northeast Hertfordshire and southern Cambridgeshire that is largely unspoilt and is richly endowed with many fine examples of agricultural and built heritage. The area has shared a common history which shaped and preserved its distinctive landscape of small and medium-sized farms linked by winding lanes and ancient rights of way to hamlets, villages and then to small market towns. For more information visit [www.hundredparishes.org.uk](http://www.hundredparishes.org.uk).*

# **BOSS**

PROFESSIONAL CLEANING SERVICES

- ✧ Windows
- ✧ Conservatories
- ✧ UPVC Soffits & Fascias
- ✧ Gutters
- ✧ Patio & Driveway Cleaning

We're a family run business based in Herts & Essex with more than 20 years experience. We provide one-off or regular visits, it's up to you. Very friendly - No job too big or small

**Contact: Tony**

**Tel: 07977 970 371**

**Email: [tony@boss-cleaning.co.uk](mailto:tony@boss-cleaning.co.uk)**

**Website: [www.boss-cleaning.co.uk](http://www.boss-cleaning.co.uk)**



## **E. N.C. Electrical Limited**

Industrial Agricultural Domestic

Electrical Installations

Fire Alarms/Emergency Lighting

Fault Finding

Portable Appliance Testing

Fixed Wiring Test & Inspection

Over 25 Years Experience in the  
Electrical Industry

Contact: Ian Arran

Tel. 01279 647042  
Mobile 07776 252994



Email: [encelectri-calltd@btinternet.com](mailto:encelectri-calltd@btinternet.com)

44 Alsa Gardens Elsenham

Bishop's Stortford Herts, CM22 6HB

## **GLYNN'S CHIMNEY SWEEPS**

Est. 1995



### **VACUUM AND BRUSH**

### **NACS MEMBERS HETAS APPROVED**

**COMPETITIVELY PRICED**

## **01279 424983**

[www.glynnschimneysweeps.com](http://www.glynnschimneysweeps.com)



---

By the time you are reading this we will have had our (delayed) AGM and hope to have our schedule of activities planned, to be notified to you via the next newsletter. However, as was communicated earlier, we are suffering (as I am sure many other village organizations are) from the progress of time. We have recently lost several active members of our Fabric Fund and those of us that are left are struggling to maintain the level of activity that we like to offer you.

We need more people to step up and help us, not just financially (although that is always welcome) but with active members and physical involvement. Without that it is very likely that the 2022 Christmas Tree Festival, if it goes ahead, will be our last. A tradition established in 2009 will come to an end. Your Church is a very important building dating back to 1110, when Henry I was on the throne! It is of major historical importance, and needs a lot of TLC, which is where our fund-raising activities – and your help - come in.

Please give a thought to helping us out – it can be as little or as much as you like. I look forward to hearing from you. Thank you.

---

## *Ladies' Race Afternoon - Saturday July 9*

*Free of Charge!*



---

Ladies, get your hats and posh frocks out as Elsenham Church invites you to the Memorial Hall on Saturday July 9 between 2 and 4pm. Leave your family for a couple of hours and meet your friends for a chat, a glass of prosecco (or non-alcoholic alternative) and a scone with cream and jam.....all free!

Hopefully we will be outside but if the weather is "British" we will take the fun inside. We are planning one or two little surprises and will keep you posted on Facebook.

---

## **ELSENHAM VILLAGE CAFE**

*By Sue Waites*

---

Our weekly coffee mornings are proving to be really successful. The buzz of happy chatter and laughter certainly brings joy to us and we hope, to you too. We are very welcoming so don't be shy – come and join us on a Tuesday morning, either in the Memorial Hall or in the Bowls Club from 9.30. The details are at the front of the magazine.

## **D BONNEY & SONS MANUDEN MOTOR VEHICLE ENGINEERS**

MOT TESTING

ALL MAKES OF VEHICLES SERVICED INCLUDING FOUR WHEEL  
DRIVES

TRW BRAKE CENTRE

DIAGNOSTIC AND FAULT FINDING

WELDING AND CHASSIS REPAIRS

SELECTION OF USED CARS

CALOR GAS STOCKIST

WE HELP YOU THE MOTORIST WITH A CHEAPER LABOUR RATE

GUARANTEED WORKMANSHIP

FREE COLLECTION AND DELIVERY IN LOCAL AREA

**PLEASE RING: MALC, NEIL OR CRAIG**

**☎ 01279 813315 OR ☎ 01279 815946**

## **Saplins Nursery**

*We are recruiting*

**Early Years Practitioners**

**Full & Part-time posts available**

**Competitive Rates of pay  
Staff ratios met and exceeded  
Ongoing Professional Development**

**We offer a home from home environment,  
where children play to learn  
We use mixed educational approaches**

**CALL us on 01279 851998**

**Saplins Nursery, Waltham Hall Cottage,  
Bambers Green Road, Takeley, CM22 6PF**

## U3A STANSTED

☎ 07874 385541 ✉ [stanstedu3a@gmail.com](mailto:stanstedu3a@gmail.com)

[www.u3asites.org.uk/stansted/home](http://www.u3asites.org.uk/stansted/home)

---



The Literature Group got there at last! In 2019, having read “Enigma” by Robert Harris, they planned to visit Bletchley Park. They finally went on April 14<sup>th</sup> 2022. Bletchley Park, which became the principal centre of Allied code breaking during WW2, housed the government code and cipher school where the team of 9,000 people, working in shifts day and night, regularly penetrated the secret codes of the German Enigma and Lorenz ciphers. They had a fascinating tour with a volunteer guide, seeing the huts, desks set out with work, pens and phones as if the staff had just left, and enjoying the beautiful house and grounds with spring blossom on the trees.



On May 9<sup>th</sup> the Garden Group travelled to Cambridge to visit the University’s Botanic Gardens, a memorable visit on a warm and sunny day. After a convivial alfresco lunch, they were joined by two guides, split into two groups and taken on interesting and informative tours of the many and varied areas of the garden and glasshouses. They learned about the history of the garden, the plants, the head gardeners and plans for the future. On June 13<sup>th</sup> they plan to visit an NGS garden, Dragons, at Boyton Cross near Chelmsford.



Members at the monthly meeting on May 19<sup>th</sup> enjoyed “Shape Shifters”, a talk by Amanda Sutherland. It was illustrated by her collection of vintage clothing including her own wedding dress which she had made in the Victorian style. She described the progression of style from the bosom emphasising muslins of the Regency period, the tightly corseted and hooped crinolines of the Victorians, the straight silhouettes of the 20s and 30s to the present day. Very early Christmas shopping took place at her travelling boutique gift shop.

At the monthly meeting in July Jane Gosling will talk about Medieval Lavenham.

---

## GIRL GUIDES UPDATE

---

The two Guides leaders are both now on maternity leave and, unfortunately, have not found anyone willing to take over the unit. So they are temporarily on hiatus until Gemma and Jemma are ready to come back (probably at least for the remainder of 2022). Elsenham News will update you in due course.

01279 871 777 - 0800 587 2556

6 Newman Road, Little Canfield, Dunmow, Essex, CM6 1GR

# MEDIACOMS

Aerial Satellite AV Security

- Aerial Installations
- CCTV & Security Alarms
- Audio Visual Installations
- Wireless & Wired Networks
- Solar Panel Installations
- Sky Installations & Subscriptions
- Freesat Installations & Receivers
- Multiroom Music & TV Distribution
- TV Wall Mounting Services
- Family Run Business



[www.mediacom.com](http://www.mediacom.com)

[info@mediacom.com](mailto:info@mediacom.com)



## Pike's Plumbing & Heating

Whether you're looking for a plumber or heating engineer, Pike's Plumbing & Heating can help.

If it's an emergency, simple problem or you're just thinking about a new boiler or bathroom give me a call – I'm available when you need me 24/7. Now's a good time to think about servicing your boiler too and make sure you're not left out in the cold! No Call-Out Charges & Free Quotations

Tel: 07889 140035

Email: [info@pikesph.co.uk](mailto:info@pikesph.co.uk)

Web: [www.pikesph.co.uk](http://www.pikesph.co.uk)

Craig Pike



# ELSENHAM TENNIS CLUB

By Petra Studholme ☎814667



With Wimbledon already in full swing, why not try some tennis? And we have some great offers for you to give it a go. Please feel free to contact us at [mail@elsenhامتennisclub.co.uk](mailto:mail@elsenhامتennisclub.co.uk) if you have any questions:

## Hire our courts – open to non-members

Try before you join – why not hire our courts to play with friends and family - £2 per adult, £1 for students and 50p for under 18s. You can email us or message on Facebook for availabilities, but please if possible give us 24hrs notice as we need to arrange to open the courts for you.

## Free 30min session for new members

All new members who join until end of September get a free session (cardio or rusty racquet) curtesy of Steve, our head coach. For more info, contact Steve directly him via email: [stevesmith865@hotmail.com](mailto:stevesmith865@hotmail.com) or call/ text 07790 561 817. To join, go onto our website: [www.elsenhامتennisclub.co.uk](http://www.elsenhامتennisclub.co.uk).

Mixed and Men's teams entered into the ESC Summer 2022 League.

Jon's match report: Unlucky for our first men's match against Stebbing, where we lost 6-10. Great points and game play throughout the sets. Looking forward to the next ones.

Mixed: first match beginning of June.

### WEEKLY SCHEDULE:

Tuesday evening – 6.30pm cardio tennis

Tuesday evening – 7.30pm club night

Wednesday morning – 10am ladies' morning

Thursday evening – 6.30pm group coaching

Thursday evening – 7.30pm cardio tennis

Friday morning – 10am ladies' morning

Sunday afternoon – 2pm leisure play

# ELSENHAM BOWLS AND SOCIAL CLUB

By Sue Waite



The thing about playing bowls is that there is nothing for months and then the season starts with a bang and there is not enough time in the day. Our season has certainly started with a bang – we have friendlies most weekends with local clubs either at Elsenham or away. The nice thing about this is that we get to see other clubs and find out what they are doing. The men's leagues and ladies' leagues are in full swing and we hope to build on our successes from last year.

Starting soon are our internal games where if you win your name goes on the honours boards which are around the inside of the club and reflect our history. We would still like to start a club for junior players so if you have children over the age of 9 then think about letting them have a go. The earlier you start to bowl the better you become – we could have budding professionals in our midst.

The club is a lovely place to be, the drinks are cheaper, we are friendly and eager to welcome you in. If you need a new interest, then bowls is for you. Take care, hope to see you, Sue, Ladies' Captain

EAT, DRINK & HIT BALLS



TOPTRACER

# DRIVING RANGE!

CELEBRATE AN EVENT WITH US TOO!  
SUITABLE FOR ADULTS & CHILDREN

SEE OUR WEBSITE FOR OUR COVID-SAFE PROCEDURE  
Golf World Stansted, Hall Road, Nr Stansted Airport, Essex, CM22 6FL  
01279 812 865 | leanne@golfworldstansted.co.uk



@stanstedgolf



power Tee



**Binwash**  
We clean  
your  
wheelie  
bins!

Commercial & Domestic



Monthly Cleaning from **£5!**

Bespoke bin cleaning machines  
4 weekly schedule or one-off clean  
Same day as waste collection  
Bins disinfected and deodorised

[www.binwash-uk.com](http://www.binwash-uk.com)

**01799 529899**

[enquiries@binwash-uk.com](mailto:enquiries@binwash-uk.com)

**BMH**

**WINDOW CLEANING  
CHERRY PICKER HIRE  
(12.5M)**

**Window Cleaning**

**Gutter Cleaning**

**Commercial Window Cleaning**

**Excellent Rates**

**Professional & Trustworthy**

**Fully Insured**

**References on request**

**07852 722139**

*"Get rid of the grime with a Tony shine"*





**Navigating the service by St Clare Social Worker – Michele Tavarone**



June 30<sup>th</sup> - 1.30pm – 3.30pm at St Clare Hospice, Wellbeing Hub, Hastingwood, CM17 9JX. Join Michele Tavarone, St Clare Hospice Social Worker in the Patient and Family Support Team. The topic is 'Navigating the Services'.

**July 28 – Planning for your future care.**

St Clare Hospice is holding a series of free, face-to-face events open to anyone in West Essex and East Herts who may have been given a terminal or life-limiting diagnosis and is looking for some informal support.

They are held at the Hospice in Hastingwood and are open to you without you being a Hospice patient.

It can be a lottery as to how much information people are given by health and social care professionals at differing stages of their illness. Sometimes people have to seek out information themselves, but it can be hard to know where to get the information that is accessible and clear. Seeking support for yourself or your loved one can be daunting. Not everyone is confident at doing this especially when feeling overwhelmed already. Navigating through health and social care, the welfare benefit system and universal services can be challenging, as resources are tight and heavily bureaucratic.

This introduction will provide an insight of what services and benefits may be available and how to access them. Book your free place here:

<https://www.eventbrite.co.uk/e/navigating-the-services-tickets-338918854417> or

call Alice Jones, St Clare Hospice Wellbeing Hub Lead on 01279 773700.

**St Clare Harlow Shop is Launching as a Clearance Outlet**

The largest St Clare shop is relaunching as a Clearance Outlet in June. There will be more clothes on sale and an even bigger furniture department. All clothing will be on sale at £2 an item and so there will be many gems to snap up.

Donations are very much welcomed of pre-loved clothes, bric a brac etc. If you have furniture you'd like to donate to St Clare please arrange a collection at [www.stclarehospice.org.uk/furniture](http://www.stclarehospice.org.uk/furniture)



# Mat Duxbury

## PAINTING

Professional Interior and Exterior Painting Specialist

References available on request

20 Years' experience

Fully Insured

NVQ Qualified and Health and Safety Certified

Local, reliable and friendly service guaranteed

For a free estimate please contact Mat on ☎ 07810 250426 or  
email ✉ [mat@duxburypainting.co.uk](mailto:mat@duxburypainting.co.uk)

ELSENHAM



## CLEAR OVENS

Oven Cleaning Specialists

01279 89 89 96

we accept cards!  


Make your oven look showroom fresh  
with a professional clean from **Clear Ovens**.  
Our fully insured expert technicians will  
make it shine like new.



Instagram



The Association of  
Approved Oven Cleaners



MEMBER OF THE FEDERATION  
OF SMALL BUSINESSES

Covering Sawbridgeworth, Harlow  
Epping, Great Dunmow, Baintree,  
Stansted, Bishop's Stortford and  
surrounding areas.

01279 89 89 96 or visit us online at  
[www.clearovens.co.uk](http://www.clearovens.co.uk)

The difference is clear

## COOKERY CORNER

By Sue Johnson ☎ 812704



**This tasty pâté is quick and very easy to prepare. Serve with hot toast and a salad garnish for a starter or light lunch.**

### **SMOKED MACKEREL PÂTÉ WITH LIME (serves 4-6)**

- 11oz (300g) smoked mackerel fillets, skinned
- 1 x 250g tub full-fat mascarpone cheese
- 1 teaspoon coarsely ground black pepper
- Finely grated zest and juice of 1 lime
- A few sprigs of parsley

Place the mackerel and mascarpone into the food processor and whizz until fairly smooth. Tip into a bowl. Add the pepper, half the lime zest and all the juice. Stir to combine and check the seasoning.

Spoon the mixture into a serving dish (or individual bowls or ramekins), scatter with the remaining lime zest and top with sprigs of parsley.

#### **CHEF'S RECOMMENDATIONS:**

Prepacked smoked mackerel fillets come with the skin on. This can be easily removed by peeling gently away from the flesh.

Best to check there are no bones before mixing with the mascarpone.

This pâté also makes a delicious luxury sandwich filler. For a tasty alternative, whizz up some rocket leaves, a teaspoon of horseradish sauce and just a squeeze of lemon with the mackerel, instead of the lime juice and zest.

## **“SPEED CAN KILL”**

How can **YOU HELP**

Join the

### ***Elsenham Community Speed Watch Team***

This is a good opportunity for Elsenham residents to increase road safety in the village, and reduce road collisions and injuries

Our village is becoming a race track

### **Talk is not enough – Your action is required**

To become part of this major village speed initiative we need more volunteers for the

### **“Elsenham Speed Watch Team”**

Full initial training will be given by Essex Police

And then just a few hours a month operationally

When you are available

**There is NO weekly or monthly commitment**

**Are you interested?** Or need more information

Contact Call – Frances Lambert 07771 728 332

# **DANIEL ROBINSON & SONS**

**Independent Family Funeral Directors & Monumental Masons**

**Est 1892**

**Always here when you need us...**

- Arrangements in the comfort of your own home, if preferred
- Private Chapel of Rest
- Pre-paid funeral planning services
- Traditional & contemporary funerals to suit your wishes

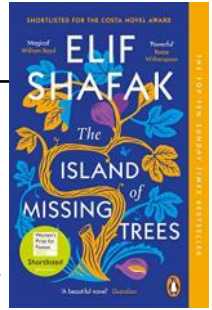


**79/81 South Street  
BISHOP'S STORTFORD  
01279 655477**

**[www.drobinson.co.uk](http://www.drobinson.co.uk)**

**THE ISLAND OF MISSING TREES** by *Elif Shafak*  
Reviewed by Marion Giles for Elsenham Book Group

---



*‘Two teenagers, a Greek Cypriot and a Turkish Cypriot, meet at a taverna on the island they both call home. The taverna is the only place that Kostas and Defne can meet in secret, hidden beneath the blackened beams from which hang garlands of garlic and chilli peppers, creeping honeysuckle, and in the centre, growing through a cavity in the roof, a fig tree. The fig tree witnesses their hushed, happy meetings; their silent, surreptitious departures. The fig tree is there, too, when war breaks out, when the capital is reduced to ashes and rubble, when the teenagers vanish. Decades later, Kostas returns - a botanist, looking for native species - looking, really, for Defne. The two lovers return to the taverna to take a clipping from the fig tree and smuggle it into their suitcase, bound for London. Years later, the fig tree in the garden is their daughter Ada’s only knowledge of a home she has never visited, as she seeks to untangle years of secrets and silence, and find her place in the world...’* So says the blurb on the back of the book.

**‘Lovely heartbreaker of a novel centred on dark secrets of civil wars and evils of extremism: Cyprus, star-crossed lovers, killed beloveds, damaged kids.’** *Margaret Atwood*

This was the choice of the book group this month, well-liked and loved by most.

The language, the descriptions, the characters are very evocative and beautifully written and whilst there are elements to the story that are very sad, it does not feel like a sad read.

If you are unaware of the history of Cyprus, this book will give you some background and a glimpse of the shared pain of the Islanders in the 1970s, both Greek and Turkish. However, the history does not feel like a lecture. This story covers themes of love, grief, memory and the importance and power of all three. There is also lots to learn about Cyprus, then and now, prejudice and intolerance. It tells us lots about trees, ecology and interconnectedness, and highlights the appalling traffic in trapped songbirds.

The book starts quite slowly and moves between England now and Cyprus then. The fig tree is the narrator of the book and this is a clever method as the tree can observe things that as readers we wouldn’t otherwise know. So the author can tell us things without actually telling us. The fact that a cutting of that tree is now in England allows us to explore her memory (the tree refers to herself as feminine) and share the knowledge the tree has. The story will also introduce you to Ada, who is dealing with her own grief and anxieties and trying to figure out who she is. Her only connection to Cyprus is a tree growing in her garden and her father and her mother’s sister whom she had not met until now.

# Editorial Information

## Articles

The **last day** for editors to receive articles, advertising and letters, which must contain the author's name and address (which may be withheld), is the 8<sup>th</sup> of each month.

Articles should ideally consist of a half page of A5 or a full page of A5. Articles over these sizes or letters containing more than 500 words may be edited depending on space.

**Copy submitted after the 8<sup>th</sup> may not be accepted but will, if deemed appropriate, be held over to the next month.** We are happy to receive hand written articles which ideally should reach us earlier than the 8<sup>th</sup> to allow for scanning etc.

**Dates for the Diary** must include date, event, venue and time.

**Please submit all articles, adverts, letters and queries to the editorial team at:**  
[elsenhamsnews@hotmail.co.uk](mailto:elsenhamsnews@hotmail.co.uk)

## General Notes

Whilst every effort is made to ensure that information is correct, the editorial team cannot be held responsible for any inconvenience caused through errors or omissions.

The views expressed within this magazine are not necessarily the views of the editorial team or Elsenham Community Association (ECA).

The editors and the ECA can accept no responsibility for the goods or services advertised in the magazine. Advertisements are included in good faith. The editors reserve the right to allow replies to letters/articles to be made in the same edition when appropriate.

**The editors' decision is final.**

**Wanted/For Sale items:** individuals may submit short details of items wanted or for sale etc at no charge. These will be included in the next available issue of the magazine subject to space and acceptance by the editors.

## Subscriptions

*Elsenham News* is available by email (on a pdf) at no charge, or through the post at a cost of £13 per annum. Contact [elsenhamsnews@hotmail.co.uk](mailto:elsenhamsnews@hotmail.co.uk)

## Advertising

The costs are as follows:

	<b>Single Insertion</b>	<b>Annual Cost (11 issues)</b>
Half Page	£20.00	£190.00
Quarter Page	£10.00	£100.00
Inside Page	£50.00	n/a
Back Page	£75.00	n/a

**Village organisations** attract reduced rates, £5 for ¼ page. Half and full-page adverts attract full rates.

## To place an advertisement:

For any queries, contact Nathalie. Please send your advert as Word or Publisher via email to [elsenhamsnews@hotmail.co.uk](mailto:elsenhamsnews@hotmail.co.uk)

**Advertising Editor: Nathalie Kosorin**

## Business Advertising

Cheques should be made payable to **"Elsenham Community Association"**.

## Editorial Team:

**Gary Williams  
Emma Bailey  
Patricia Davis  
Anne White  
Kirstie Waite  
Nyaradzo Chabata**

**Previous issues of Elsenham News are available on the ECA Website**

[www.ElsenhamCommunityAssociation.org.uk](http://www.ElsenhamCommunityAssociation.org.uk)

## VILLAGE CONTACTS

Airport Roadside Parking		0800 731 2385
Beavers	1sthenhamandelsenham@gmail.com	
Bowls Club	Jean Platt	816151
Brownies	elsenhambrownies@outlook.com	
Church Office (Old Franks, High St, Elsenham)	Anna Hicks	814285
County Councillor (Stansted)	Ray Gooding	813103
Cricket Club	David Brown	831011
Cub Scouts	1sthenhamandelsenham@gmail.com	
ECA (Chairman)	Allan Hathaway	813385
ECA (Secretary)	Moyra Jackson	647351
ECA Website	www.ElsenhamCommunityAssociation.org.uk	
Elsenham Surgery	www.elsenhamsurgery.nhs.uk	814730
Elsenham C of E Primary School	Linda Todd Headteacher	813198
Elsenham Church PCC Secretary	David Hill	812397
Elsenham Rights of Way website	www.e-voice.org.uk/erowos/	
Friends of Elsenham School (FOES)	Gemma Mills	07745 036066
Guides elsenhamguides@gmail.com	Gemma Schafer	07792 572423
Henham & District Garden Society	Moyra Jackson	647351
History Society	Mike Rea evhs12@hotmail.co.uk	813634
Member of Parliament	Kemi Badenoch	0207 219 5214
Memorial Hall Bookings	Cheryl Rae	817834
Neighbourhood Watch Co-ordinator	Frances Lambert	07771 728332
	franceslambertnhw@btinternet.com	
Parish Clerk - Louise Johnson	louise.epc@gmail.com	07456 791727
Elsenham Parish Council Website	<a href="http://www.elsenham-pc.gov.uk">www.elsenham-pc.gov.uk</a>	
Police		101
Post Office		812175
Rainbows	elsenhamrainbows@outlook.com	
Scouts	1sthenhamandelsenham@gmail.com	
St Mary's Fabric Fund	Elizabeth Barker	813543
Tennis Club	Petra Studholme	814667
Tots & Toddlers	Dawn Temple	814406
Uttlesford District Councillors	Petrina Lees	816675
(for Elsenham & Henham)	Garry LeCount	07836 346717
Village Hall Bookings	Annie Gleeson	07809 490731
Village Hall email address	elsenhamvillagehall@gmail.com	647729
Womens Institute Secretary	Gill Hathaway	813385
WI website	www.elsenhamwi.co.uk	
Youth Football Club (Chairman)	Paul Jarvis	07786 933280

*If you would like your village organisation contact to appear regularly in the magazine, please contact one of the editors, see opposite for details.*

## UPCOMING EVENTS

Flower Show - Saturday 20 August



Welcome to our  
Farm Shop & Tearoom  
The Barn, Pledgdon Hall, Henham,  
Bishops Stortford, CM22 6BJ

If you would like to order from us or book a table, please call us on 01279 248 201 or email [orders@cliffords.info](mailto:orders@cliffords.info)

Open Monday to Saturday 9.00 to 17.00 (CLOSED TUESDAYS), Sundays 9.00 to 16.00, Pig Sty Tearoom open 9.00 to 15.30



### About our Farm Shop

We stock a vast array of produce.

Fresh fruit and vegetables sourced from New Spitalfields Market, local meats and poultry from Priors Hall, bread and cakes from The Brown Bread Co. & beers and spirits from local microbreweries & distilleries. Foods and drinks from around the world & a large gluten free range and many vegan items.



Open Monday to Saturday 9.00 to 17.00 (CLOSED TUESDAYS), Sundays 9.00 to 16.00, Pig Sty Tearoom open 9.00 to 15.30

### Pig Sty Tearoom

All Day Breakfasts & Lunch with both Full Size "Pig Sty" meals as well as smaller "Piglet" size servings and for the youngest among us a "Baby Piglet" menu.

Sunday Lunches with 2 meat choices and a veggie choice every week, including homemade desserts.

Our Afternoon and Cream Teas are fast becoming legendary, freshly made Sandwiches, Scones & both Home Made Cakes and Belgian Patisserie.



If you would like to order from us or book a table, please call us on 01279 248 201 or email [orders@cliffords.info](mailto:orders@cliffords.info)