

Elsenham News



Saturday 16 August

Flower Show

Memorial Hall 2.30pm



elsenhamnews@hotmail.co.uk

August 2025

Elsenham Village Regular Monthly or Quarterly Activities

Parish Council 1st **Monday** of month 7.45pm (excl. Bank Holidays) Memorial Hall
 Natter Night 2nd **Monday** of month 7-9pm Golf World Stansted
 Elsenham EAGLES 4th **Monday** of month 7.30-9pm Bowls and Social Club
 Henham & District Garden Soc. 1st **Tuesday** of month 2 for 2.30pm Memorial Hall
 Community Choir 1st & 3rd **Tuesday** of month 7- 8.30pm Village Hall
 Life Drawing 2nd and 4th **Tuesday** of month 7.30-9.30pm Village Hall
 Village History Society 2nd **Wednesday** of month quarterly 7.45pm Memorial Hall
 Women's Institute 3rd **Thursday** of month 7.45pm Memorial Hall
 Church Lunch Club 2nd & 4th **Friday** of month 12.30pm Memorial Hall

August 2025 diary

| | | |
|---------------|-------------------------------|--|
| Mon 4 | Parish Council Meeting | Memorial Hall 7.45pm |
| Tues 5 & 19 | Elsenham Community Choir | Village Hall 7pm |
| Fri 8 & 22 | Church Lunch Club | Memorial Hall 12.30pm |
| Mon 11 | Natter Night | Golf World Stansted 6.30-9pm |
| Tues 12 & 26 | Life Drawing | Village Hall 7.30pm |
| Thurs 14 & 28 | Community Supermarket | Memorial Hall o/s 1.30-3.30pm |
| Sat 16 | Flower Show | Memorial Hall 2.30pm |
| Sat 16 | Bingo | Bowls & Social Club 7.30 for 8pm |
| Mon 18 | Elsenham Eagles | Bowls & Social Club 7.15pm |
| Thurs 21 | District Councillors' Surgery | Orwell House, Station Road Elsenham 6-7pm |
| Thurs 21 | WI | Memorial Hall 7.45pm |
| Sat 30 | Famers' Market | Village Hall 12.30-2.30pm |



Mobile Library
Every third Saturday stopping at Glebe End
9.30am to 10am Next visit: 16 August

Elsenham Village Regular Weekly Activities

| Day | Time | Activity | Location |
|-----------|---------------|-------------------------------|--------------------------------|
| Monday | 9.30-10.30am | Zumba | Memorial Hall |
| | 10.30-11.30am | Health walk | Start at De Mandeville Green |
| | 4-4.30pm | Rascals (3-4yrs) | Memorial Hall (term time) |
| | 4.30-5.30pm | Rascals (5-7yrs) | Memorial Hall (term time) |
| | 5.30-7pm | Rascals (8-12yrs) | Memorial Hall (term time) |
| | 7-7.45pm | Pilates | Elsenham Village Hall |
| | 7.30-8.30pm | Shape to the beat | Memorial Hall (not 1st Monday) |
| | 9.30-11.30am | Village Café Coffee | Memorial Hall |
| | 12.15-1pm | Touchpoint Food Share | Memorial Hall |
| | 4.45-5.45pm | Rainbows | Memorial Hall (term-time) |
| | 4.45-5.45pm | Beavers | Ugley Village Hall (term-time) |
| | 6-7.15pm | Cubs (Wolf Pack) | Ugley Village Hall (term-time) |
| | 6-7.30pm | Brownies | Memorial Hall (term-time) |
| | 7.30-10.30pm | Tennis Club night | Tennis Courts |
| | 8pm | Fitness Yoga/Pilates | Memorial Hall |
| Wednesday | 9.45-11.30 | Tots and Toddlers | Memorial Hall |
| | 5.30-7pm | Slimming World | Memorial Hall |
| | 6.30-7.15pm | Women's strength and Mobility | Village Hall |
| | 7-9pm | Scouts | Ugley Village Hall (term-time) |
| | 7.30pm | Aerobics | Elsenham Village Hall |
| Thursday | 9.10am | Teddy Bear Music | Memorial Hall (term-time) |
| | 6-7.15pm | Cubs (Bear Pack) | Ugley Village Hall (term-time) |
| | 6.45-7.45pm | Jump Fit | Elsenham Village Hall |
| | 7.30pm | Gong Baths | Memorial Hall |
| Friday | 10-11am | Little Fishes | Memorial Hall (term-time) |
| Saturday | 8.15am-1pm | Tarte au Citroen | Playing Field |
| | 8.15am-1pm | Youth boys & girls | Playing Field |
| | 9-10am | Dance Scene | Memorial Hall |
| | 8.45-9.30am | Little Kickers Mighty | Village Hall (term time) |
| | 9.35-10.20am | Little Kickers Junior | Village Hall (term time) |

2025

GOLF WORLD STANSTED

THIS SUMMER

10% OFF FOOTGOLF AND
ADVENTURE GOLF FOR
FAMILY'S.

28TH JULY - 1ST SEPTEMBER
MONDAY - FRIDAY

WITH CODE - GWS25

T&C'S APPLY, FOR MORE INFORMATION CONTACT BAR@GOLFWORLDDSTANSRED.CO.UK



Elsenham News

We want your ideas!

Now we are online only, we want to appeal to as wide an audience as possible. To help us achieve this, we would like your ideas on any improvements or additional services we could provide as part of an online service. This could include areas such as:

Articles
Organisations
Interactive features
Layout
Guest articles

Please send your ideas and thoughts to:

elsenhamnews@hotmail.co.uk

We hope you will just take a few minutes to drop us a line and give us your thoughts.



Schools have finally broken up for summer and there will be a number of parents looking for ways to amuse their young charges locally.

Inside this month's issue there is plenty of activity and events to choose from!

Golf World are offering family discounts (see opposite page) , Daisy May's has a host of activities (page 13) and Down Farm Stud has a day of miniature railway lined up on 23 August (page 40).

And for the adults? There are numerous societies and organisations in and around the village that would welcome you. Why not go along to a meeting and see if it's one for you?

Whatever you choose to do, we are sure there is something for everyone here in Elsenham and, now we are online, you can easily search for an activity that you feel would be of interest to you.

Whatever you decide to do this summer break, we hope you enjoy it and Elsenham News helps you find that enjoyment.

While pondering what to do, please do read the piece on the opposite page. We would love to hear from you, particularly the younger members of our village community.

Enjoy you summer!

The Editorial Team

Regular features

| | | | |
|------------------------------|----|------------------------------|-------|
| Parish Council | 7 | Church Calendar | 27 |
| Development Developments | 9 | Fire Brigade Advice | 29/31 |
| Village History Society | 11 | Newport & Dist. Flower Club | 33 |
| Daisy May's Farm | 13 | 100 Parishes | 35 |
| Elsenham WI | 15 | Aubrey Buxton Nature Reserve | 37 |
| District Councillors' Report | 17 | Bowls Club | 39 |
| Ray's Reflections | 21 | Parish Registers | 41 |
| Elsenham EAGLES | 23 | Book Review | 43 |
| U3a | 25 | Cookery Corner | 45 |



**Street Dance
Pop Singing
Acting**

**FREE
Trial
Offer**



**New classes in
Elsenham**

For more details:

Tel: 01376 331543

Email: admin@rascals-uk.com

Web: www.rascals-uk.com

Fun classes
inspiring Confidence,
Character & Creativity
for children aged 3-12yrs

Binwash

**We clean
your
wheelie
bins!**



Commercial & Domestic

Low cost & highly efficient service!

Professional machinery

4 weekly schedule or one-off clean

High pressure wash and dried

Disinfected and deodorised

www.binwash-uk.com

01799 529899

enquiries@binwash-uk.com

YOUNG'S

WINDOW CLEANING SERVICE

We specialise in residential properties offering a quality
and regular service for exterior and interior cleans
Serving the Elsenham community for the last 10 years

**Call or text Malcolm for a FREE quote
07817 481901**

ELSENHAM PARISH COUNCIL MEETING 7 JULY

By Louise Johnson, Clerk.

✉ louise.epc@gmail.com ☎ 07456 791727



The Gladman's proposed development of 240 houses north of Bedwell Road was rejected by UDC Planning Committee, with the principal reason being noise from the motorway.

The Parish Council has informed Uttlesford District Council about the appalling condition of the play area on the Dandara development. They have also informed Enforcement at Uttlesford District Council that the footpath to the station on the Bloor site has still not been fully installed.

Residents should not allow their dogs to exercise in the enclosed fenced off area on Southfield Close. The Parish Council owns this land, which is designated for the new community centre.

It is very disappointing that the new 'No Dogs' sign on the playing field corner was damaged just two days after being installed. The playing field is a dog free area. This is to allow children to play without the fear of treading in dog waste, for the football teams to play football without having to pick up all the dog waste on the pitches first. Remember, some people may be uneasy around dogs. The playing field is a place children should be able to enjoy themselves without any worries.

There is a lot of concern about the tall dead trees on Hall Road near Church Lane; these trees could fall into the road and cause an accident. The Parish Council have informed Essex Highways and have asked our PCSO to visit and advise the owner.

Despite the no parking sign on Oziers Green, cars and vans continue to park on the green. The grass cutter cannot cut the grass, it churns the mud up which is then left on the road, Oziers residents deserve to see a green space, not a car park.

The next Parish Council meeting is 4 August in The Memorial Hall at 7.45pm.

The new home of Elsenham News. Simply put your mobile phone camera over this QR code and follow the link.





T.J. Patmore
Building Services

Extensions – Loft Conversions
Roof work – Carpentry – Roof Tiling
First and second fix carpentry
Kitchen fitting
Built in wardrobes
Decorating interior and exterior
Floor and wall tiling
Fencing – Decking – Patios
Supply and fix u.p.v.c. windows
House maintenance

**Call Trevor for friendly help, advice
and FREE estimates**

mob 07932 666224



CHIROPODIST & PODIATRIST

Bishop's Stortford

- Orthotics
- Diabetic Foot Care
- Saturday Clinics
- Routine Treatment

R. Handford & Colleagues
H.C. P.C Registered

Bishop's Stortford - 16 Hockerill Street

01279 652249

www.feet.org.uk

DREAM, EXPLORE, Discover

OFFER
**10%
OFF**

YOUR NEXT BOOKING
USING THIS ADVERT.

YOUR LOCAL *Personal Travel Consultant*

We can look after all your travel requirements including hotels, flights, package holidays, villas, cruises, car hire and much more.

*Subject to availability. Only available on selected deals. Please mention advert when requesting a quote.



Carla Jayne at Hays Travel



cj_haystravel

01279 886731 | 07590 804702 | carla.jayne@hays-travel.co.uk
haystravel.co.uk/personal-travel-consultants/carla-jayne



Hays Travel

DEVELOPMENT DEVELOPMENTS

By *Graham Mott* ☎ 812516 ✉ motts@grahammott.plus.com



The outline application by Gladman for 240 homes on the site to the north of Bedwell Road was refused by Uttlesford District Council's Planning Committee on 2 July. The original deadline for representations was May 2024, over a year ago, and Gladman tried unsuccessfully in the intervening period to improve the application. Unusually, they did not turn up at the Planning Committee meeting to make their case - presumably they decided it was a lost cause, and their time would be better spent in considering the Appeal which, no doubt, will follow shortly.

Noise from the motorway was inevitably the main issue. Members of the committee visited the site a couple of days before the meeting, and duly found that it was difficult to hear each other speak. They were unimpressed by the proposal that a row of three-storey houses should be erected on the side of the site towards the motorway, in order to baffle the noise. An application to build 50 homes south of Bedwell Road was approved with a similar arrangement, but that was on a much smaller site. It was explained that some of the rooms on the side towards the motorway would be deemed 'habitable', giving a choice between closed windows with controlled noise and open windows with unrestrained noise.

The site is divided roughly 50/50 between the parishes of Henham and Ugley, with a major impact anticipated on Elsenham village. A diligent 'three for the price of one' representative of the three parish councils spoke on the inescapable noise, particularly in the planned children's play areas. The parishes had combined to engage a noise consultant, whose view differed radically from Gladman's expert. Uttlesford officers helpfully explained that noise assessment is not an exact science, and that in the end a judgement must be made. Members duly made their judgement, and refused the application by eight to nil, with one abstention, which is as near as you can get to unanimity without actually being unanimous.

The Hearings into Uttlesford District Council's proposed Local Plan concluded on 19 June. The Inspector gave some feedback in the last session, and was remarkably positive. He congratulated the Council on having got so far, and said that if they can show a five-year housing land supply, then they are pretty much there, with no show-stoppers. There are still a dozen or so issues which are being considered. Meanwhile, UDC need to draft a schedule of main modifications, which will be the subject of a six-week consultation period.

UDC got nowhere near this level of approval with their previous attempts, in 2014 and 2019. On those occasions, inspectors' cards were held close to inspectorial chests without so much as a chink of daylight in between, and the two decisions were a surprise to everyone, and an unpleasant surprise to most. This time, UDC had assembled a good and knowledgeable planning team, although their lead KC was surprisingly inarticulate, despite, no doubt, drawing the largest wage of anyone in the room.



**DECORATING SERVICES
ALL ASPECTS OF DIY**

NO JOB TOO SMALL

**For a friendly reliable service
Just Ask.....**

GARY KING

Home : 01279 850001

Mobile : 07951 452602

g.king962@btinternet.com

 **S.E.P** 
**TREE CARE & GARDEN
MAINTENANCE**

Tree Topping & Felling

Pruning & Pollarding

Hedges cut, Trimmed & Removed

All waste Chipped & Removed

Garden, Garage & Site Clearance

Gravel Driveways & Paths

Fencing

Turf Supplied & Laid

Jet Washing Paths & Driveways

Local Tradesman

20 years experience

For a free estimate Phone

07903 621657

08000 588057

14 Day Cooling off Period



**D BONNEY & SONS MANUDEN
MOTOR VEHICLE ENGINEERS**

MOT TESTING

**ALL MAKES OF VEHICLES SERVICED INCLUDING FOUR WHEEL
DRIVES**

TRW BRAKE CENTRE

DIAGNOSTIC AND FAULT FINDING

WELDING AND CHASSIS REPAIRS

SELECTION OF USED CARS

CALOR GAS STOCKIST

WE HELP YOU THE MOTORIST WITH A CHEAPER LABOUR RATE

GUARANTEED WORKMANSHIP

FREE COLLECTION AND DELIVERY IN LOCAL AREA

PLEASE RING: MALC, NEIL OR CRAIG

 01279 813315 OR  01279 815946

ELSENHAM VILLAGE HISTORY SOCIETY

By Mike Rea, Secretary ☎ 813634 ✉ evhs12@hotmail.co.uk

🌐 www.elsenham-history.co.uk



At our June meeting, our speaker, Mark Ratcliffe told the story of Camp 116 at Hatfield Heath. What was camp 116 you might ask? It was a Prisoner of War (PoW) camp, one of many built around 1943 to house the growing number of captured combatants, many from Germany and Italy. This number grew rapidly after D-Day such that there were around one thousand camps in total, including main camps, like Hatfield Heath, and their satellites and associated hostels. Numbers of prisoners held peaked at 402,000 in 1946 when the US sent their PoWs back to the UK.

The first prisoners to be held there were Italians, largely captured in North Africa. In 1944 after the allied landings in Normandy the allies started taking large numbers of German prisoners and certain camps were designated to be turned over to hold German prisoners, Hatfield Heath being one of them.

When the camp was built the facilities were all modern, they had flush WCs, sinks with running water and electricity when most of the local villagers were living in cottages with wells, gas lamps and no flush toilets. So, although they were prisoners, their living conditions weren't too bad. You can't help wondering what the locals thought seeing these facilities being built for people who were supposed to be our enemy and, in some ways, living in better conditions than themselves.

By September 1946, Hatfield Heath Camp had nearly 900 German prisoners, nearly twice the original capacity. Some of the excess were housed in tents within the compound and other, lower risk prisoners, were billeted on the farms where they were working. All these men were guarded by Lieutenant Colonel Barlow and his seven officers and around forty other ranks so this certainly wasn't a high security camp. There were no guards walking around the perimeter with dogs, searchlights or gun towers, it was all quite a light touch.

By 1948 Camp 116 was empty, the last PoWs leaving the UK early in 1948, three years after the end of the war. It is believed that the final push to get them repatriated was the 1948 Olympics as the Government didn't want to hold prisoners whilst we were hosting the Olympic games.

Today the camp, whilst extant, is derelict and in 2024 planning permission was granted to redevelop the prisoner area for housing and to demolish all but one hut, so everything else will go. The guards area is to be redeveloped for three large multi-million-pound lodges!

I am pleased to say that we have filled our speaker vacancy for the September meeting. Chris Bush has agreed to speak to us about "Listed Elsenham" a canter around the older buildings at Elsenham's heart. The meeting will be on Wednesday 10 September at 8pm in the Memorial Hall. Visitors are always welcome at our meetings for a modest £2 but even better, annual membership still costs just £5.

CARPETS 2 U

Carpet, laminate, Lvt, vinyl, karndean
All types of flooring done

The best for less

Latex floor levelling, plyboarding preparation
Old uplifted and disposed of
Plenty of choice brought to your home

I try to give the best quality for your budget.
30 years' experience

Steve 07939 739845
Carpets2u@icloud.com

TAKELEY IRONING & DRY CLEANING

OPENING TIMES
MONDAY - FRIDAY 8AM - 5PM
SATURDAY 8AM TO 12PM

FREE LOCAL COLLECTION & DELIVERY TO YOUR DOOR

Takeley, Elsenham, Henham, Stansted, Felsted, Hatfield Broad Oak, Hatfield Heath, Sheering, Dunmow, Sawbridgeworth, Broxted, Spellbrook, Molehill Green, Broxted, Little Canfield.

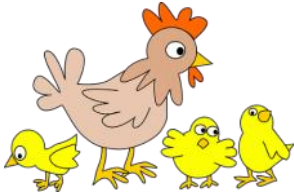
- ✓ WASHING & IRONING
- ✓ IN HOUSE DRY CLEANING
- ✓ 48 HOUR SERVICE
- ✓ DUVETS
- ✓ CURTAINS
- ✓ ALTERATIONS
- ✓ WEDDING DRESSES

The Centre, Dunmow Road (Behind Londis)
Takeley, Bishops Stortford
Herts, CM22 6SH

Email: takeleyironing@gmail.com
takeleydrycleaning@gmail.com

Tel: 01279 871245

Website: www.takeleyironinganddrycleaning.com



Daisy May's Farm

Hall Road, Elsenham, CM22 6DN

We are so excited as once more our fabulous woodland campsite is open, and we are ready to receive guests! You can stay in the woodland area and get back in touch with nature or stay in our camper/caravan paddock where there is lots of space and lovely scenery. All these options obviously include entry to the farm where you can meet our lovely animals and all their babies.....what a fabulous holiday and all for just £25 a night and on your doorstep! Please message us through our Facebook page to book.

As if that wasn't enough, we still have babies of all sorts everywhere - chicks, ducklings and you can even cuddle the lambs and kid goats, and they don't come much cuter!

We have a fabulous safe area to play in, a train ride with a small £2 fee, a stream to splash in, a woodland trail to explore, ice creams to be slurped and crafts to be created and more!

Entry is £6 (under 1s free) and it really is a fabulous day out for all the family.

We are open every day, but please always check our Facebook page just in case.

There really is so much to do and see at the farm and our animals just love seeing you all. So do be sure to come and see us over the summer. Can't wait to see you.



We **always** need help in so many ways, particularly when there is **so** much to do. So if you have a little time to spare, **please** get in touch, we would **love** to hear from you. Please contact ☎ 07747 787973 or take a look at our website 8 www.daisymaysfarm.org to find out more. Thank you so much.

E. N.C. Electrical Limited

Industrial Agricultural Domestic

Electrical Installations

Fire Alarms/Emergency Lighting

Fault Finding

Portable Appliance Testing

Fixed Wiring Test & Inspection

**Over 25 Years Experience in the
Electrical Industry**

Contact: Ian Arran

**Tel. 01279 647042
Mobile 07776 252994**

Email: enelectri-
calltd@btinternet.com

44 Alsa Gardens Elsenham

Bishop's Stortford Herts, CM22 6HB





replaceglaze^{uk}
Replace, Repair & Revive Your Double Glazing

All types of double glazing repairs, maintenance & installations, including emergency callouts. At replaceglaze.com we provide a reputable, family run double glazing repair & installation service.

Our services include:

- Double glazing installations, repairs & maintenance
- Aluminium, composite & uPVC installations
- Windows & door handles
- Locks & hinges
- Mistied units
- Patio door wheels
- Door adjustments & lubrication
- Aluminium bifolding doors
- Composite doors
- Aluminium/uPVC roof lanterns



 **01279 282997**  **01371 701000**

 info@replaceglaze.com  www.replaceglaze.com

 [replaceglaze](https://www.instagram.com/replaceglaze)

Mat Duxbury

PAINTING

Professional Interior and Exterior Painting Specialist

References available on request

20 Years' experience

Fully Insured

NVQ Qualified and Health and Safety Certified

Local, reliable and friendly service guaranteed

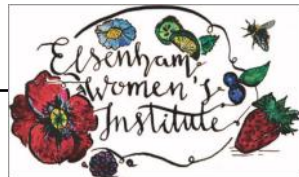
For a free estimate please contact Mat on ☎ 07810 250426 or
email ✉ mat@duxburypainting.co.uk

ELSENHAM



ELSENHAM WOMEN'S INSTITUTE

By Moyra Jackson ☎ 647351



As I write this in the middle of thunder, lightning and torrential rain it is a bit of an interruption to the beautiful sunshine we have had for most of the summer so far.

It has not stopped Elsenham WI getting out and about. Our Walking Group meet monthly and explore different local walks – most if not all ending with a coffee stop. Listen out at the meetings for the next date.

Natter Nights continue through the summer on the second Monday at the Golf Club at 6.30pm – 9pm. We have an exciting new project up our sleeves; patterns and wool for anyone who can knit or crochet. Plenty of chat, crafting and a coffee or perhaps a cheeky little Chablis – what's not to like!

Our last meeting was attended by the excellent Paul Barwick telling us all about Nancy Wake. She was known as the White Mouse, and she undertook extremely dangerous missions with the French Resistance in WWII. Paul was an excellent speaker, and we were all amazed by the exploits of Nancy – an extremely brave and inspiring woman. I am sure we will see Paul again at a future meeting.

Many of our members were joined by ladies from Manuden, Stansted, Great Sampford and Hatfield Broad Oak WIs on our coach to the University of Essex, Colchester campus for the Federation of Essex WIs Annual Meeting. The weather was lovely – thankfully we were in an air-conditioned hall. The main speakers were excellent. In the morning Lucy Lewis, the first woman bomb disposal officer spoke about her army days – a very funny lady. Adam Frost, renowned gardener and 7 times gold medal winner at Chelsea Flower Show as well as BBC Gardeners Question Time regular was the afternoon speaker and he was excellent and very amusing. As always, the Elsenham crew gave great support to both Gill Hathaway and me as we were taking part in the meeting.



Our next meeting is our Summer Party on Thursday 21st August. We will be having a Drinks and Cocktail Tasting Event, which I am sure, will be enjoyed by all. Due to limited space this meeting is for members and invited guests only.

The competition is a Limerick: 'There was a young girl who liked gin..... If you are not a member and would like to come along, please give either Gill or me a call.

Details of our programme, events and activities can be found on Facebook, Twitter and Instagram – search for Elsenham WI. Visitors are welcome to our monthly meetings so please come along. We meet at 7.45pm on the third Thursday in the month in the Memorial Hall.

Elsenham WI – There's a lot going on!

DANCE SCENE

New Classes Every Saturday morning Elsenham Memorial Hall

Baby Ballet - 9:00-9:30

Junior Ballet - 9:30-10:00

Musical Theatre/ Street - 10:00-10:45

(Ages 3-5)

(Ages 6-8)

(Ages 9+)



For more information and to
book a free trial please contact:

Lorraine Hodges 01778 743893
lorraine@dancescene.ma.uk

Come along to our new fun
classes and get involved at our
well established dance school!



Luxury Toilet Hire (UK) Ltd



Whether you are arranging a wedding,
private party or corporate event, let
Luxury Toilet Hire (UK) Ltd
provide you with the perfect toilet facility
to make your occasion a memorable success.

Cesspit emptying also undertaken.

Tel: 01371 873003 or 01279 504638

Email: info@luxurytoilethire.co.uk

Web: www.luxurytoilethireltd.co.uk



We also hire out mobile fridge
and freezer units.



Please contact us for a quote:

Tel: 01371 873003 or 01279 504638

Email: info@chillermatic.com Web: www.chillermatic.com

01279 871 777 - 0800 587 2556

6 Newman Road, Little Canfield, Dunmow, Essex, CM6 1GR

MEDIACOMS

Aerial Satellite AV Security

- Aerial Installations
- CCTV & Security Alarms
- Audio Visual Installations
- Wireless & Wired Networks
- Solar Panel Installations
- Sky Installations & Subscriptions
- Freesat Installations & Receivers
- Multiroom Music & TV Distribution
- TV Wall Mounting Services
- Family Run Business



www.mediacoms.co.uk

info@mediacoms.co.uk

DISTRICT COUNCILLORS' REPORT

✉ Cllrdonald@uttlesford.gov.uk

☎ 07941 880279

✉ Cllrlees@uttlesford.gov.uk

☎ 07713 074656



Bedwell Road Development Refused

Uttlesford District Council has officially rejected the proposal for 240 homes on Bedwell Road, following strong local opposition. This decision represents a clear win for local voices and common sense. The Planning Committee carefully considered all the issues raised and unanimously supported the officers' recommendation to refuse the application.

Refuse Trucks Go Green

Uttlesford's waste collection fleet is going greener! Vehicles will now run on **Hydrotreated Vegetable Oil (HVO)** — a clean biofuel that reduces carbon emissions by up to **90%** compared to diesel. The new fleet is already operating in Elsenham, Henham, and neighbouring villages. Quoting Cllr. Bianca at the recent Scrutiny Meeting: "This is an important shift from a health and safety perspective. Both our workers and residents are exposed to diesel emissions — this is a small price to pay for cleaner air and healthier lives." Cabinet members were **unanimous in their support** for this transition.

Small Electricals: Weekly Recycling Now Available

You can now recycle **small electrical items** weekly alongside your wheeled bin collection.

- Place items out **by 7am** at the boundary of your property on collection day.
- **Important:** Please wait until you receive your **bin sticker** before presenting items for recycling.

Local Green Grants Awarded

Several community sustainability projects have received funding:

- **Elsenham:** £1,000 to create new wildflower meadows along De Mandeville Road.
- **Henham Village Hall:** £7,995 secured for solar panel installation.
- **Elsenham Memorial Hall:** Now powered by **29 solar panels** with integrated battery storage.

Community Grants Scheme – Now Open

The **One-Off Community Grant Scheme** is open until 29 August. If you're running a local project that needs a single funding boost to get started, check the **Uttlesford District Council website** for eligibility and application details.

Sustainable Housing in Henham

A new housing development in Henham has been approved, featuring:

- **45 low-carbon homes**
- Over 40% affordable housing. While opinions vary, this project is a positive example of environmentally-conscious design in action.

Continued on the next page

DANIEL ROBINSON & SONS

Independent Family Funeral Directors & Monumental Masons

Est 1892

Always here when you need us...

- Arrangements in the comfort of your own home, if preferred
- Private Chapel of Rest
- Pre-paid funeral planning services
- Traditional & contemporary funerals to suit your wishes



**79/81 South Street
BISHOP'S STORTFORD
01279 655477**

www.drobinson.co.uk



Pike's Plumbing & Heating

Whether you're looking for a plumber or heating engineer, Pike's Plumbing & Heating can help.

If it's an emergency, simple problem or you're just thinking about a new boiler or bathroom give me a call – I'm available when you need me 24/7. Now's a good time to think about servicing your boiler too and make sure you're not left out in the cold! **No Call-Out Charges & Free Quotations**

Tel: 07889 140035

Email: info@pikesph.co.uk

Web: www.pikesph.co.uk

Craig Pike



Wayfinding & Rural Connectivity Projects

We are currently inviting expressions of interest from:

- **Town and parish councils** interested in co-designing signage and wayfinding infrastructure
- **Rural communities and businesses** seeking to improve local connectivity

This initiative supports our wider goal of creating vibrant, accessible, and character-rich town centres. Details have been shared with all local councils and will be promoted through regular channels.

Coming Soon: Neighbourhood Roadshow

The **Uttlesford Neighbourhood Roadshow** returns later this summer!

Get updates, meet your councillors, and engage with local services. Check your parish noticeboard or website for dates and locations.

We will be holding our usual monthly surgery at Orwell house from 6:00 – 7:00pm on Thursday 21 August. We look forward to meeting residents without making any prior appointment. As ever, of course, we would be very happy to hear from any residents by email or phone should there be anything they think we can help with or answer any questions you may have on our report, or the District Council.


Transport Report – by Ray Franklin

Stephenson's have just produced a timetable for our local bus services, the 7, 7A and 301 (Saffron Walden) and 501 (Harlow). Physical copies of the timetables are available on their buses, but they also have an app – unfortunately this is only available for the Apple iPhone.

The First Bus app is convenient and user-friendly and will help you plan your bus journeys and access real-time information about bus services. Users can quickly find the nearest bus stop, view bus timetables, and track the live location of your bus. The app also provides updates on any disruptions or delays.

Priority One, the £25 million investment made by Essex County Council into targeted highway maintenance completed last month. 128 additional roads were resurfaced – a total of 400,000 square metres which included Chapel Hill in Stansted. Additional investment in road maintenance will continue during the 2025/26 fiscal year.

<https://stephensonsofessex.com/wp-content/uploads/sites/48/2025/04/7-7A-07-24.pdf>



Cultivated Turf Supplies

**ROTAVATING
NEW LAWNS LAID
ALL GARDEN WORK
UNDERTAKEN
CALL FOR FREE QUOTATION**

**☎ 01279 718555
☎ 07930 188920**

JOHN COLEBY

Experienced Interior and Exterior Decorator

For a friendly, reliable service please telephone
01279 815510 or 0793 9070818
for a free estimate

Essex Autospray

Your local Collision Repair Centre - Est 1982

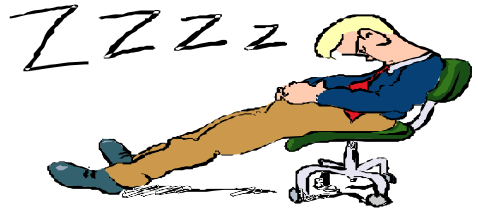
- Free Courtesy Cars
- Free Estimates
- Low Bake Ovens
- Blackhawk Alignment



Tel: 01279 816296 E: info@essexautospray.co.uk

www.essexautospray.com

M11 Business Link, Parsonage Lane,



Some are gone and some remain

To paraphrase Lennon & McCartney, "There are Clubs and Organisation that I remember, some are gone and some remain". Many faces appear before me, those who have maintained and worked for village bodies. I intend to reflect on those that are no longer around and mention the many that remain. So, let's start with: -

The Elsenham Angling Club

"The Elsenham Angling Club," was formed in 1956-1957. Initially "piscatorial pursuits" were confined to Elsenham Lake. This fine, three-acre stretch of water was created by Sir Walter Gilbey. The lake was fed by underground springs, the fresh, oxygenated water constantly refreshing the many "denizens of the deep." One could sit and fall under the "fascination of the float," observe kingfishers as they swooped for flies and occasionally a majestic heron would fly overhead.

There were many healthy fish beneath the waters; the larger and more wily specimens were determined to remain there. The club flourished; if you arrived at 4 am you would often find a dozen people already there! Arriving at that time, many anglers were forced to wend their weary way home. To try to alleviate the situation, the club acquired another water on the River Stour. Already a break-away group had formed, "The Elsenham Oaks," a sea-angling group. The ownership of Elsenham Hall changed many times and, for many reasons, the club ceased to exist in 1970.

Ray
Franklin

tdcelectrical

covering all aspects of
domestic electrical installations

contact us for a free estimate

07960 941138

contact@tdcelectrical.com

www.tdcelectrical.com

MASKALLS **TREE SURGERY**

Small family business

Big expertise in trees

Call George

M: 07982 601 570 | T: 01279 819 127

email: george@maskalls.co.uk

www.maskalls.co.uk



**All types of tree care & hedge cutting undertaken.
Call for a free estimate.**



ELSENHAM EAGLES

Elsenham Action Group for Local Environmental Sustainability

✉ elsenhams.action@btinternet.com

By Bianca Donald



We would like to thank the Elsenham Flower Show Society for donating plants for the community garden in Isabel Drive. These were planted on Sunday 29th June by a stalwart team in temperatures of over 30 degrees. The team had a lot of fun working together and after the planting and watering they enjoyed keeping their own moisture levels up by sharing some cold beer together!



The community garden has now moved further towards being “A nicer place to be” after the installation and planting of three no dig flowerbeds.



We are grateful to Elsenham Primary School's Gardening Club for their help in growing super sunflowers and wonderful wildflowers for the community garden. We hope these green-fingered young gardeners enjoyed growing this abundance of plants, they have certainly helped to pack out the beds.

The final touch of a deep mulch of bark chippings will hopefully retain moisture in the beds as we have not yet got running water at the garden. If you live locally, please pop over with the occasional can of water to help us with keeping everything alive.

This is just the beginning, we have many more plans to make this forgotten space a nice place to be. If you would like to be involved with the community garden, please contact Bianca Donald ☎ 07941 880 297 so you can be added to our WhatsApp group.

Make a Metre Matter

Could you, whether you are a gardener or not, “Make a metre matter” and make space for wildlife in your own garden by letting a patch of grass grow long and/or by planting native pollinator-friendly plants? So much of the UK is occupied by gardens and the more people garden with wildlife in mind the more we can really make a difference. Every little helps. Please remember to recycle your old printer cartridges at the recycling boxes at the station and post office. A big thank you to those who have already done so. We have received £75 so far which will go towards the community garden.





Elsenham Tots & Toddlers Group



We meet in the Memorial Hall on Elsenham Playing Field

Wednesdays at 9.45am to 11.30am (Term Time only)

All are welcome - Mums to be, babies & toddlers up to 5years - with mum or dad, grandparent or carer

We have a very safe and friendly environment in which to play and have fun

Drop in for a chat and a coffee - Your first week is free
Then it's £3 per adult & first child,
50p per additional child over 12 months

Please message Dawn on 07944 841358 for more information



Elsenham Tots and Toddler Group

MEET OTHERS

Lots of Toys

MAKE FRIENDS

Have Fun

CLEAR OVENS

Oven Cleaning Specialists

01279 89 89 96

we accept cards!

Make your oven look showroom fresh with a professional clean from Clear Ovens. Our fully insured expert technicians will make it shine like new.



The Association of Approved Oven Cleaners



MEMBER OF THE FEDERATION OF SMALL BUSINESSES

Covering Sawbridgeworth, Harlow Epping, Great Dunmow, Braintree, Stansted, Bishop's Stortford and surrounding areas.

01279 89 89 96 or visit us online at
www.clearovens.co.uk

The difference is clear

U3A STANSTED

Registered Charity Number 1148073

✉ stanstedu3a@gmail.com

stansted.u3asite.uk



By Susan Sedgebeer

We're delighted to announce a new group activity following an approach from Stansted Bowling Club, lawn bowls. The group will meet twice a month, on the first and third Monday afternoons, throughout the summer. Sessions will take place at the Club's facilities, with some of the members from the Bowling Club kindly offering guidance and support.

Our Annual General Meeting took place at the start of June's monthly meeting. The current committee remains unchanged, though it was noted that some members will be retiring at next year's AGM. We will therefore be seeking nominations for several roles. As a member-led organisation, the u3a relies on everyone playing their part to help sustain and shape our future.

In August, we look forward to a talk by Paul Chambers from Touchpoint. Paul, a Stansted resident for over 20 years, is a passionate advocate for community spirit. He sees Touchpoint as a valuable way to enhance the support we offer one another and will update us on its latest developments and initiatives. The meeting will take place on Thursday 21 August in St Theresa's Parish Centre, High Lane, at 1.30pm for 2.00pm. Visitors and prospective members are always welcome. The Garden Group will visit Thundridge Hill House, Ware, on Monday 11 August. The 2.5-acre garden features a wide variety of plants, shrubs, and roses, including a distinctive "yellow only" bed.

Finally, understanding modern technology can be daunting, so the u3a Trust has launched a national AI Team. This group aims to help all 430,000 members better understand Artificial Intelligence—its meaning, uses, benefits, and potential risks. An online library, updated daily, offers articles on AI's real-world applications. A rolling programme of talks, both online and in person, is also available to members across the UK.

The new home of Elsenham News. Simply put your mobile phone camera over this QR code and follow the link.



ST MARY'S CHURCH ELSENHAM

Office@heuchurch.co.uk

Thought For The Month by Pete Tibbott

Hello – it's great to 'meet' you!

My name is Pete and, as I write this, I am a week away from moving to Elsenham with my family to be the Curate of Henham, Elsenham and Ugley churches. My wife, Anna, and I have two wonderfully energetic children (Ezra and Lara) who are both looking forward to joining Elsenham Primary School in September. We are moving from Oak Hill College in North London where I have been training for church ministry for the last three years. Prior to that, we lived in Harold Wood (Essex). Both Anna and I grew up in the Romford/Harold Wood area and, aside from university years, have lived the majority of our lives within the M25, so we are looking forward to life with a bit more greenery!

Before College I worked as an office manager and fundraiser for a Christian mission organisation for about 8 years. Anna worked as a primary school teacher but has enjoyed the last few years being a full-time mum. We both enjoy watching box-sets (Clarkson's Farm at the moment), playing various sports and taking our kids to the beach.

We are very much looking forward to living in Elsenham and have already been warmly welcomed by our new church families. I recognise, however, that we are in a period of great change: new school, new house, new church, new streets. There seems to be a constant buzz of things that need ordering for the move, trips to Ikea and B&Q (or rather, Wickes in Bishop's Stortford) or the need to tie up loose ends. Added to the busyness is the mix of different emotions that we're all

feeling: the excitement and expectation of all things 'new' with lots of places to discover and lots of people to meet; the sadness of saying goodbye to friends; the nostalgia of shared memories; the confusion of... "which bins do I need to put out again... and when?!"

In periods of change like this, it's a great comfort to know that God does not change: he is the same yesterday, today and forever (Malachi 3:6; Hebrews 13:8). If he did change, it would be disastrous (see the stories of the Greek and Roman gods for examples!). But as it is, God remains always loving, always just, always good. What's more, his promises to his people never change and so Christian people have a hope "as an anchor for the soul, firm and secure" (Hebrews 6:19).

Our family love to visit the Isles of Scilly every year, which is a place full of boats (as well as sun, sand and Cornish pasties). Without anchors, islanders and visitors alike would be stuck watching their boats float off into the Atlantic. But with anchors in place, their boats are secure through whatever weather comes their way.

So it is with a Christian's hope. Life has many changes, many ups and many downs. But having a hope secure as an anchor, in the unchanging God, we know we can go about this period of change with ultimate lasting security and hope.

May God bless you this Summer.

Pete

CHURCH EVENTS IN OUR VILLAGES AUGUST 2025

Church Services

Sunday 3rd August

10:30 All Together All-Age Service,
Elsenham Village Hall

Sunday 10th August

10:30 Joint Morning Service,
Ugley Church

Sunday 17th August

10:30 Joint Communion Service,
Elsenham Church
18:00 Sunday@6, Henham Church

Sunday 24th August

10:30 Morning Praise Service,
Henham Church

Sunday 31st August

10:30 Morning Praise Service, Hen-
ham Church

**Sunday@6 Services resume on
7th September 2025 when Youth
Groups also resume.**

Other Regular Events

Sunday lunchtime picnic:

(All welcome) Bring a packed lunch and
folding chair after the Morning Services
to:

10th August: 'St Helen's' Stebbing

24th August: The Vicarage, Henham

MID-WEEK AND SATURDAY:

Start the Week with Prayer

Church Hall, Henham 9.30am

Mondays: 4th, 11th, 18th & 25th

Church Lunch Club

Elsenham Memorial Hall 12.30pm

Fridays: (2nd & 4th Friday of the month):
8th & 22nd

For information on all these events,
please contact office@heuchurch.co.uk

Smoke Alarms Save Lives

We recommend that each floor of your home has a working alarm fitted. These should be tested regularly and batteries replaced if necessary.

We provide smoke alarms free of charge to all Essex residents, via our Home Safety/Safe and Well Service. To keep you and your family safe from fire, contact us today:

Call: 0300 303 0088

Email: home.safety@essex-fire.gov.uk

Online: www.essex-fire.gov.uk/Book



GLYNN'S CHIMNEY SWEEPS

Est. 1995



VACUUM AND BRUSH

NACS MEMBERS HETAS APPROVED

COMPETITIVELY PRICED

01279 424983

www.glynnschimneysweeps.com



TRADITIONAL DRIVEWAYS

☎ 01992 450356

☎ 07961 882027

✉ tdmaintenance@btinternet.com

www.tdms-driveways.com

Block paving specialists. Black and red tarmac. Hand and machine laid tarmac. Turfing and fencing. Residential and commercial. All work guaranteed. Free estimates.



The Hair Loss Clinic

North Hall Road, Ugley

07957 166436

www.hairlosslaserclinic.co.uk

The Hair Loss Clinic is a company set up to provide information, advice, support and above all solutions for people experiencing hair loss. Not only do we provide realistic and workable solutions to those suffering from hair loss but we are also specialists in after and on-going care for hair loss, giving you the very best support. We can help you through your journey from hair loss through to aftercare if your hair grows back. We provide a personalised service and will recommend the course of treatment or other solutions most appropriate to you.

We provide information, support and advice about your hair loss and identify the factors you will need to consider when choosing which solution is suitable for you.

We provide guidance on cutting and styling of your wig or integration piece and advice on what to do when your hair starts growing back.

Monthly Trichologist clinics are held with Eva Proudman, MIT IAT. Eva is widely known both in the UK and internationally for her work with hair loss. She has appeared on TV many times and supports many major hair companies with her research into hair loss. All consultations are private and last for between 45 minutes and 1 hour; during this time all relevant areas of health, diet, lifestyle, family history, hair care regime will be discussed along with an in depth examination, including the use of a specialist scalp camera to arrive at a diagnosis and treatment plan.

Whatever the cause of your hair loss or the extent of the hair loss, we are here to help you.

Smoke Alarms

Smoke alarms save lives.

You are at least eight times more likely to die in a fire in the home, if there are no working smoke alarms.

To arrange for free Home Safety/Safe and Well Visit call us on 0300 303 0088

Escape Routes

If fire breaks out, it is vital that you and your family know your escape route so you don't waste time. Every second counts in an emergency.

Prepare an escape route and make sure everyone knows it. Keep your escape route clear so there are no obstacles to slow you down.

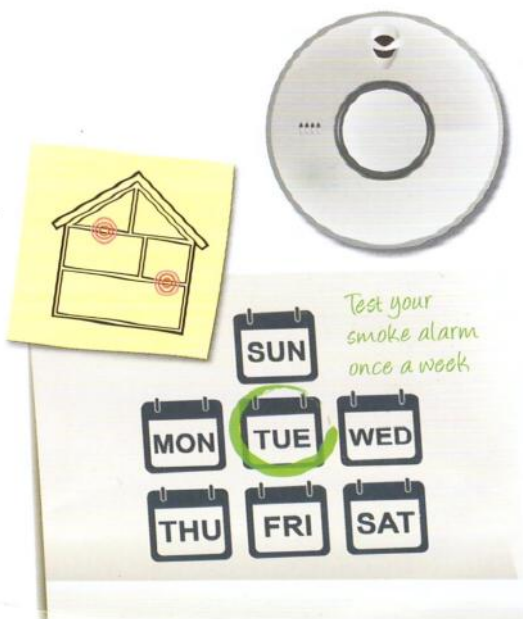
Make sure everyone in the house – including friends and family who may stay over – knows where all keys to doors and windows are kept.

Kitchen

More fires start in the kitchen than anywhere else in the home.

Never leave children or pets alone in the kitchen while cooking, and do not leave cooking unattended.

Please keep tea towels, cloths and packaging away from the cooker, and clean your oven and grill regularly to prevent a build-up of grease or fats.



Taylor Computer Services (Stansted)

On-site Computer Maintenance/Repairs

DON'T BE RESTRICTED TO OFFICE HOURS, I CAN VISIT YOUR HOME OR OFFICE DURING THE DAY, EVENINGS OR WEEKENDS AT A TIME TO SUIT YOU.

Email and Broadband Setup, Data Transfers/Data Recovery, Hardware & Software Installation, Virus & Spyware Removal & Protection, New PC Setup & Training

Call Derrick on 01279 816418 ~ 07926 289749
Email: Info@tcsstansted.co.uk



SDS Installations Ltd

AERIAL AND SATELLITE SERVICES
FOREIGN SATELLITE SYSTEMS - CCTV - EXTRA TV POINTS - SKY LINK UPS
PHONE POINTS - HOME SIGNAL DISTRIBUTION - WALL MOUNTED PLASMA/
LCD SCREENS - CABLES SUPPLIED AND HIDDEN

Alan Smith
50 Sunnyside
Stansted
Essex CM24 8AX

01279 279012
07771 881042
sdsinstallations@hotmail.com
sdsinstallations.com



Double Glazed Units – SAME DAY

- Table Tops
- Shelves
- Emergency Glazing
- Replacement Misted Double Glazing
- Greenhouse Glass
- Cat and Dog Flaps Fitted
- Splash Backs – Any Colour
- Glass Cut To Size
- Emergency Boarding
- Safety Glass
- Mirrors

**LOCAL COMPANY – GREAT PRICES – RELIABLE
PROMPT SERVICE**

Elsenham – Great Dunmow – Bishops Stortford - Stansted



NEWPORT & DISTRICT FLOWER CLUB

Sandra Honour

✉ sandra@thewesleys.net

We hope you've been enjoying the lovely weather, a bit too warm for some, including the plants and flowers in our gardens! We have, however, continued to enjoy our club evenings and in July two of our members demonstrated and helped us create beautiful arrangements in special holders suitable for attaching to a bottle and a box that could be given as gifts. I would certainly be thrilled to receive one!



As a reminder, 13 August sees our afternoon Cream Tea and mini floral demonstration so if you haven't secured your place, be quick! Tickets are £15.

Visitors are always welcome. We would love to see you at any of our meetings.

A 7 for 7:30pm start every third Wednesday of the month at Ugley Village Hall, CM22 6HR.

GARDEN HINT *By Sue Johnson*

Time it right

Water plants early in the morning to use precious resources most efficiently; this will both help to reduce evaporation and deter slugs. Established plants can survive droughts, so prioritise watering new plantings, fruit and vegetables, as well as any potted plants. Use rainwater whenever and wherever you can. If you are going away, group containers together and place under a tree or in a shaded spot if possible.

COOK UPHOLSTERY

www.taylorandcookltd.co.uk

Don't Replace It ... Re-cover It !



Any Item Reupholstered

Sofas • Armchairs • Headboards • Divans •
Kitchen Chairs • Ottomans

Wall Padding

Create a beautiful feature wall in your lounge or
bedroom • Large Choice of fabrics and designs

Call Gary on 07787 518022

Email: garycook99@btinternet.com

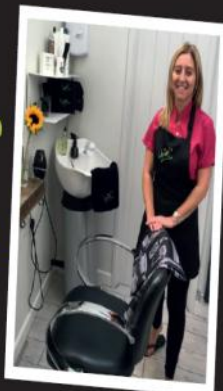
Text or email a picture for an immediate quote

★ ★ ★
Clare's *Gents hairstylist*
@ Rickling Green

★ Appointments from
7am Mon-Sat

★ FREE easy parking

★ Fully qualified
& insured



Call: 01799 542424

Text: 07791 058406

City &
Guilds
Qualified



ZUMBA with KAZ!

fitness



FUN

MUSIC

DANCE

MONDAY 9.30am

Elsenham Memorial Hall CM22 6BY

THURSDAY 7:45pm

Hillmead School CM23 4PW

All ages and abilities

Children welcome to come along

There are many ways to get fit,
some are just more fun than others.



Like **Kaz Zumba** on Facebook

Visit my website Kazs.zumba.com



Contact Kaz

07976 849 144

kaz.zumba@yahoo.co.uk

first class

FREE

then just **£7**
per class



Before the dissolution of the monasteries, instigated in 1536 by King Henry VIII, the Hundred Parishes area had its fair share of religious houses: monasteries, convents, abbeys and priories. The remains of some can still be seen today.

Tilty Abbey is one. It was founded for Cistercian monks in 1153 and prospered, mainly due to the wool trade, before being dissolved. In 1220 a chapel was built outside the abbey gates for use by visitors. The chapel survives and today functions as Tilty's parish church. Although little remains of the other abbey buildings, the site can be visited. Interpretation boards inform the visitor and give an artist's impression of what the site would have looked like.



The remains of Tilty Abbey

Little Dunmow Priory was founded in 1104 and was home to Augustinian monks until the dissolution. Most of the priory church was demolished but the southern aisle survived. It is now used as the parish church.

Several of our larger hospitality venues were developed on sites of former religious houses: Hanbury Manor in Thundridge was once Poles Convent, Down Hall in Hatfield Heath evolved from a 14th-century monastery, while Leez Priory in Felsted became the home of Richard Rich through his leading role in dissolving the monasteries.



Leez Priory, Felstead

In Saffron Walden, Audley End House was built on the site of Walden Abbey, founded in the 12th century and whose lands were granted in 1538 to Sir Thomas Audley, Henry VIII's Lord Chancellor. The present house was built some 60 years later by his grandson Thomas Howard.



Hanbury Manor

While we tend to think of religious houses as a bygone era, Pleshey has one that is relatively new and active: its House of Retreat was founded as a convent in the early 1900s and became the first Diocesan Retreat House in England in 1927.

The Hundred Parishes is 450 square miles of northwest Essex, northeast Hertfordshire and southern Cambridgeshire that is largely unspoilt and is richly endowed with many fine examples of agricultural and built heritage. The area has shared a common history which shaped and preserved its distinctive landscape of small and medium-sized farms linked by winding lanes and ancient rights of way to hamlets, villages and then to small market towns. For more information visit www.hundredparishes.org.uk.



Advertise your business
in Elsenham News
Contact us at

elsenhamnews@hotmail.co.uk

Please see our new online rates on page 46

JLT ROOFING

07974 953162

All roofing works undertaken, including :

- *Slating
- *Asphalt
- *Tiling
- *Flat Roofing
- *Leadwork
- *Fascia and Soffit
- *Guttering

*All works fully guaranteed *

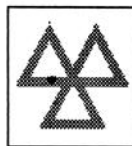
PROFESSIONAL RELIABLE AFFORDABLE

Please contact for a free no obligation quote:

07974953162 info@jltr roofing.co.uk

GARRETT'S GARAGE SERVICES

42 Golds Business Park, Elsenham
Bishop's Stortford, Herts CM22 6JX



- | | | |
|----------------------|--|--|
| • Mechanical Repairs | • M.O.T.'s - Catalyst & Diesel Tested | MODERN WELL MAINTAINED WORKSHOP |
| • Servicing | • E.H.D.C. - Authorised Hackney Carriage Testers | |
| • Tyres | • Batteries | ALL MAKES OF VEHICLE |
| • Engine Tuning | • Exhausts | |
| • Computer Diagnosis | | *FREE COLLECTION AND *DELIVERY SERVICE* |
| • Windscreen Repairs | | |

TEL: 01279 647777 FAX 01279 817622

THE AUBREY BUXTON NATURE RESERVE

By John Welham, Warden

✉ communications@essexwt.org.uk



In the Aubrey Buxton nature reserve we have two large elm trees that stand out majestically whatever the season. Mature elms are now seldom found because of the infamous Dutch Elm disease.

So how do we come to have these two healthy specimens in the reserve? These trees are known as 'Pitney-Bowes Elms', but more properly they are "Sapporo Autumn Gold", a hybrid between Japanese and Siberian elms. The US firm Pitney Bowes spearheaded a campaign which focused on planting disease resistant elm trees throughout the UK and Europe as part of its Elms Across Europe initiative in the early 1980s.

The patent issued for this hybrid has expired, and there are now no propagation restrictions, so we will see if we can propagate our trees from cuttings.

Last month we welcomed members of the Essex Field Club to carry out some moth trapping in the reserve.

This involves using mercury vapour lamps to attract in the moths which are then released unharmed after identification.

On a warm night with good conditions, we recorded over 100 species of moth. The most abundant species was the Bird Cherry Ermine of which some 500 arrived at the lamps.

It is amazing to discover the volume and variety of life that exists in the reserve and that will normally go unobserved.





EFFORTLESS BOOKKEEPING SOLUTIONS FOR YOUR BUSINESS

ARE YOU...

- Spending weekends sorting receipts instead of with family?
- Unsure if your business is actually profitable?
- Stressed about missed deadlines?
- Making decisions without clear financial insights?

IMAGINE...

- Handing over all bookkeeping to a trusted professional
- Receiving clear monthly reports
- Knowing exactly where your business stands financially
- Finally focusing on what you do best

Why wait? Free up your time and reduce stress today.

CONTACT US NOW

07976 849144

WWW.SALTERACCOUNTING.CO.UK

WE PUT THE HOT IN YOUR WATER & THE HEAT IN YOUR HOME

- Central Heating, Boiler replacement
- Boiler servicing & Repairs
- General Plumbing



Call Mark - 07908005478

Email - nelsonplumbingheatingltd@gmail.com

Nelson & Sons Plumbing
& Heating LTD



ELSENHAM BOWLS AND SOCIAL CLUB

www.elsenhambc.org.uk

By David Thomas



Welcome to our midsummer bowls and social club news. The bowls season is only five months long and seems to pass very quickly. Sadly, when the nights start drawing in in the autumn, there is not enough light to play evening matches, and we need to give the grass time to recover after it has been manicured within millimetres of its survival all summer. Our bowling season comes to its climax with our Club Finals weekend on 6 and 7 September. Visitors are welcome to come and enjoy the conclusion of our internal competitions.

Activities for our social members go on throughout the year. In July alone, we had a quiz night, a bingo session and a music night with the Caverners group playing chart topping hits all evening.

The quiz night, which was held on 5 July, was an enjoyable evening with general knowledge being tested at all levels. Thank you to our quiz master, Trevor, who set questions which included maths problems, questions on travel and cartoon characters going back over the last 60 years. One of the technology questions was "What is the letter of the alphabet found on the top left key on a computer keyboard?". If you think you can answer questions like that maybe you should join us on our next quiz!

On 20 September we are looking forward to our next music night, when we are having music from Gary Benjafield. This promises to be a memorable night with hits from "Neil Diamond" and other artists from the 70s and 80s. Tickets are available now at £7.50 for members and £12.50 for non-members. Ticket availability is limited so please call Trevor ☎ 07445 437437 to secure your ticket for the event.

Bingo sessions are coming up on 16 August and 13 September at 7.30 for 8pm and are open to members and non-members. Our caller is Ray, who you may know from his "Reflections" article in this magazine. He brings the same sense of humour to calling the numbers for us.

Friday evenings are becoming really busy at our team roll up and social night. We are having introduction sessions for new bowlers, friendly club member matches, competition games and skills practice sessions played right across all six of our rinks. New and existing members are playing side by side making the evening worthwhile. It is lovely to spend some time outside on the green on a summer evening and then sit and have a drink on the patio in the sunshine. Please pop along on a Friday evening to find out more about our bowls and social club.

For full details about Elsenham Bowls Club including membership and our opening times please see our website (address above).

STANSTED DOWN MINIATURE RAILWAY



OPEN DAY

Saturday 23rd August

10:30 – 16:00

Rides* on:

Steam Trains

Electric Train

Steam Lorry

Traction Engine

Steam Car



Tea, Coffee & Home Made Cakes

Picnic Area

Cash & Card Payments Accepted

Free Entry – All Rides £2 ea.



Find us at: Down Farm Stud, Elsenham Road, Stansted, CM24 8ST.

What3words: nametag.totally.audio

From Elsenham - cross the M11 bridge, we are 150m on the left – signposted "Miniature Railway"

If you live nearby (Elsenham), please walk if you can

* rides on specific engines are subject to availability and weather conditions

Please note: our toilet is not accessible by the disabled

The Stansted Down Miniature Railway is operated by the

Saffron Walden and District Society of Model Engineers

Enquiries: swdsme.secretary@gmail.com Facebook: [groups/SWDSME](https://www.facebook.com/groups/SWDSME) Web: www.swdsme.co.uk

Uttlesford Citizens Advice

✉ help@uttlesfordca.org.uk 🌐 www.uttlesfordca.org.uk
☎ 01799 618840

citizens
advice

Celebrating 25 Years of Dedicated Service

This year, Uttlesford Citizens Advice is proud to celebrate 25 years of service from Lyndie Taylor, our long-standing adviser in the Disability Benefits Team. Her dedication reflects what we do every day; provide free, confidential advice to help you move forward, whoever you are, whatever your problem.

You can find more information online at
www.uttlesfordca.org.uk.

If you can't easily access the internet, or need a little extra help, send us an email, give us a call, or pop into the Library in Dunmow, Stansted and Thaxted or the Old Schoolhouse in Takeley. If we aren't there in person you can still speak to an adviser via our simple one-touch video link. Advice is always free and confidential. To speak to one of our friendly advisers call **01799 618840** or email help@uttlesfordca.org.uk.



Can You Help Others Too?

As the need for our services continues to grow, **we're looking for new volunteers** to join our friendly and supportive **Disability Benefits Team**. If you have a few hours a week, an eye for detail, and a desire to make a real difference in people's lives, we'd love to hear from you. Full training is provided.

Go to <https://www.uttlesfordca.org.uk/join-us/> for more details on how to join.

FROM THE PARISH REGISTERS

Church Contact Telephone Numbers, E-Mail and Web-Site Addresses

| | | |
|----------------|--|-------------------|
| Vicar | 01279 850480 louis.wilson@heuchurch.co.uk | Rev. Louis Wilson |
| Curate | petetibbott@heuchurch.co.uk | Pete Tibbott |
| Church Office | 01279 814285 | Anna Hicks |
| | office@heuchurch.co.uk | |
| Church website | https://heuchurch.org | |

Enquiries about thanksgivings, baptisms, weddings and funerals should be made in the first instance to Anna Hicks at the Church Office.

hpc (State Registered) **Chiropodist**

CH09088

Home Visiting Practice

Mrs. Julie Golden
Est. 1994
01279 873492

A professional service at a
competitive rate

THINKING OF SELLING OR RENTING YOUR PROPERTY?

Please call either of us to find out
how we can help make your move
a whole new experience!

Nicola 07909 548028
Jacqui 07956 513238



Advertise your business in
Elsenham News
Contact us at

elsenhamsnews@hotmail.co.uk

Please see our new online rates on page 46

THE FLOWER BOAT GIRL BY LARRY FEIGN

Reviewed by Marion Giles for Elsenham Book Group



“Her father traded away her youth. Sea bandits stole her freedom. She has one way to get them back: become the most powerful pirate in the world. South China coast, 1801. Sold as a child to a floating brothel, 26-year-old Yang has finally bought her freedom, only to be kidnapped by a brutal pirate gang and forced to marry their leader. Dragged through stormy seas and lawless bandit havens, Yang must stay scrappy to survive. She embeds herself in the dark business of piracy, carving out her role against the resistance of powerful pirate leaders and Cheung Po Tsai, her husband's flamboyant male concubine. As she is caught between bitter rivals fighting for mastery over the pirates—and for her heart—Yang faces a choice between two things she never dreamed might be hers: power or love. Based on a true story that has never been fully told until now, *The Flower Boat Girl* is the tale of a woman who, against all odds, shaped history on her own terms.” So says the blurb on the back of the book.

A simply riveting read from first page to last. *Midwest Book Review*

This was the choice of the book group this month.

The Amazon AI summarises: Customers find the book to be a fascinating and well-written read, with one review highlighting its wealth of cultural and geographical detail. The story receives positive feedback for its descriptive narrative and epic nature, with one customer noting it's based on true events.

The account of how pirates struggle with authorities, volatile and deadly weather, interpersonal conflicts, battles with other pirates and all sorts of hardships from being constantly at sea were well described. Some of the names are hard to keep up with and some of the raids and journeys merged with one another — but it is possible to let that pass. It is based on a true story so the research must be been extensive. It is a long read but good if you like historical fiction/epic saga.

The relationship between Yang and her pirate husband Cheng Yat was turbulent with a few moments of understanding. They appeared to be mutually dependent and resentful, full of drama, competition and jealousy. He was often very violent towards her, which she accepted. There is a lot of mention of her ‘skill set with men.’ A little stereotypical perhaps and based on what the male author imagines might be the role of a sex worker in those times. Not sure how much research was done on this aspect.

At the end of the story Yang's approach towards a power grab felt a bit sketchy and quick and the book ended abruptly but apparently there will be a sequel. I don't think I will be buying it.



Did you know that living in close proximity to a Farmers Market can increase the value of your home, as it's seen as a really positive selling feature, so why not make the most of ours?

Our stall-holders can vary from month to month, and their products can be seasonal, but the quality is always tip top and there is something for everyone; so, if you haven't been for a while, do pop by.

We are open from **12.30-2.30pm** and this month it is on **SATURDAY 30 August**, you will not be disappointed.

We have a great range of products, including **eggs, honey, apple juice, chocolate, cakes, savoury pastries, local meat products, healthy juice shots, dog treats, chutneys and oils, plants, fish, whole-foods & spices, bread, cheese...** The list is long, and the majority is locally produced.

Not sure what you're after? Why not come for fresh barista coffee and cake and have a browse at the produce whilst you're here...it's a win win!

Most of the produce is homemade, so not only do you get to treat yourself to these fantastic goodies once a month, but you are also supporting local businesses, and coming together with our fabulous community; you might even make a new friend!

The markets for the rest of the year are on

SEPTEMBER 27

OCTOBER 25

NOVEMBER 29 (all things festive & more!)

We look forward to seeing you.

No charge for entry; just enjoy and immerse yourself in all the gorgeous produce!

Best wishes

Elsenham Farmers Market Team

COOKERY CORNER

By Sue Johnson ☎ 812704



Here is an easy salad which will enhance any barbecue or summer supper menu.

EASY ITALIAN BEAN SALAD (serves 8)

- 1 bunch spring onions
- 2 garlic cloves, crushed
- 1 red chilli, seeded and finely chopped
- 2 x 400g cans cannellini beans, drained and rinsed
- 1 x 400g can butter beans, drained and rinsed
- 6 tbsp olive oil
- 2 tbsp white wine vinegar
- plenty of chopped parsley

Finely chop the spring onions and put into a bowl with the garlic and the chilli. Mix in the cannellini beans and the butter beans.

Whisk the olive oil with the white wine vinegar and add plenty of seasoning. Stir through the salad with plenty of chopped parsley.

CHEF'S RECOMMENDATIONS:

Make up to a day ahead and keep in the fridge until ready to eat. Mix well before serving.

The new home of Elsenham News. Simply put your mobile phone camera over this QR code and follow the link.



Editorial Information

Articles

The **last day** for editors to receive articles, advertising and letters, which must contain the author's name and address (which may be withheld), is the 8th of each month.

Articles should ideally consist of a half page of A5 or a full page of A5. Articles over these sizes or letters containing more than 500 words may be edited depending on space.

Copy submitted after the 8th may not be accepted but will, if deemed appropriate, be held over to the next month. We are happy to receive hand written articles which ideally should reach us earlier than the 8th to allow for scanning etc.

Dates for the Diary must include date, event, venue and time.

Please submit all articles, adverts, letters and queries to the editorial team at:
elsenhamsnews@hotmail.co.uk

General Notes

Whilst every effort is made to ensure that information is correct, the editorial team cannot be held responsible for any inconvenience caused through errors or omissions.

The views expressed within this magazine are not necessarily the views of the editorial team or Elsenham Community Association (ECA).

The editors and the ECA can accept no responsibility for the goods or services advertised in the magazine. Advertisements are included in good faith. The editors reserve the right to allow replies to letters/articles to be made in the same edition when appropriate.

The editors' decision is final.

Wanted/For Sale items: individuals may submit short details of items wanted or for sale etc at no charge. These will be included in the next available issue of the magazine subject to space and acceptance by the editors.

Subscriptions

Elsenham News is available by email (on a pdf) at no charge, or through the post at a cost of £13 per annum. Contact **elsenhamsnews@hotmail.co.uk**

Advertising

The costs are as follows:

| | Single Insertion | Annual Cost (11 issues) |
|------------------|---------------------|----------------------------|
| Half Page | £10.00 | £45.00 |
| Quarter | £ 5.00 | £25.00 |
| Inside Full Page | £20.00 | £100.00 |
| Back Page | By negotiation | n/a |

Village organisations are not charged for a quarter page and half and full-page adverts attract heavily discounted rates.

To place an advertisement:

If you have any queries, please email us. Please send your advert as Word or Publisher via email to:
elsenhamsnews@hotmail.co.uk

Advertising Editor: TBA

Business Advertising

Cheques should be made payable to "**Elsenham Community Association**".

Editorial Team:
Gary Williams
Emma Bailey
Marion Giles
Patricia Davis
Anne White
Angie Wenlock

Previous issues of Elsenham News are available on the ECA Website

www.ElsenhamCommunityAssociation.org.uk

UPCOMING EVENTS

Music night, Elsenham Bowls & Social Club September 20 8pm till late
MacMillan Coffee Morning, Bowls & Social Club, September 26 9.30-11.30am

VILLAGE CONTACTS

| | | |
|---|---|-----------------------------|
| Airport Roadside Parking | | 0800 731 2385 |
| Beavers | 1sthenhamandelsenham@gmail.com | |
| Bowls Club | Therese Clear | 07759 158859 |
| Brownies | elsenhambrownies@gmail.com | |
| Church Office (Old Frank's, High St, Elsenham) | Anna Hicks | 814285 |
| County Councillor (Stansted) | Ray Gooding | 813103 |
| Cricket Club | David Brown | 831011 |
| Cub Scouts | 1sthenhamandelsenham@gmail.com | |
| ECA (Chair) | Sue Waite | 07956 899326 |
| ECA (Secretary) | Chris Richardson | 07940 465627 |
| ECA Website | www.ElsenhamCommunityAssociation.org.uk | |
| Elsenham Eagles | elsenham.action@btinternet.com | |
| Elsenham Farmers Market | elsenhamfarmersmarket@gmail.com | |
| Elsenham Surgery | www.elsenhamsurgery.nhs.uk | 814730 |
| Elsenham C of E Primary School | Linda Todd Headteacher | 813198 |
| Elsenham Church PCC Secretary | David Hill | 812397 |
| Elsenham Rights of Way website | www.e-voice.org.uk/erowos/ | |
| Friends of Elsenham School (FOES) | Louise Judd | foespta@hotmail.com |
| Henham & District Garden Society | Moyra Jackson | 647351 |
| History Society | Mike Rea | evhs12@hotmail.co.uk 813634 |
| Member of Parliament | Kemi Badenoch | 0207 219 5214 |
| Memorial Hall Bookings | | |
| www.elsenhamcommunityassociation.org.uk/hiring-elsenham-memorial-hall | | |
| Neighbourhood Watch Co-ordinator | Frances Lambert | 07771 728332 |
| | franceslambertnhw@btinternet.com | |
| Parish Clerk - Louise Johnson | louise.epc@gmail.com | 07456 791727 |
| Elsenham Parish Council Website | www.elsenham-pc.gov.uk | |
| Police | | 101 |
| Post Office | | 812175 |
| Rainbows | elsenhamrainbows@gmail.com | |
| Scouts | 1sthenhamandelsenham@gmail.com | |
| St Mary's Fabric Fund | Elizabeth Barker | 813543 |
| Tennis Club | Petra Studholme | 814667 |
| Tots & Toddlers | Dawn Temple | 07944 841358 |
| Uttlesford District Councillors | Petrina Lees | 07713 074656 |
| (for Elsenham & Henham) | Bianca Donald | 07941 880279 |
| Village Hall Bookings | elsenhamvillagehall@gmail.com | |
| Womens Institute Secretary | Gill Hathaway | 813385 |
| Youth Football Club (Chairman) | Ricky Lambourne | info@elsenhamyfc.co.uk |

If you would like your village organisation contact to appear regularly in the magazine, please contact one of the editors, see opposite for details.

THERE'S SO MUCH TO DO AT GWS!



TOPTRACER RANGE

**ADVENTURE GOLF,
FOOTGOLF, LESSONS,
GYM, EVENTS,
9-HOLES & MORE!**

NOW OPEN UNTIL MIDNIGHT FRIDAY'S & SATURDAY'S!



**Golf
World
Stansted**

Visit us now: Golf World Stansted, Hall Road, Nr Stansted Airport CM22 6FL
01279 812 965 ban@golfworldstansted.co.uk