

Elsenham News



This year's competition details in our centre spread pull out



*Want to forge some
new friendships
through singing?
See page 31*



*Time to get fit? See
pages 21 and 41*



*If you want to learn
more about your
local area and its
history, see page 11*



elsenhamnews@hotmail.co.uk

April 2025
75p where sold

Elsenham Village Regular Monthly or Quarterly Activities

Parish Council 1st **Monday** of month 7.45pm (excl. Bank Holidays) Memorial Hall
 Natter Night 2nd **Monday** of month 7-9pm Golf World Stansted
 Elsenham EAGLES 4th **Monday** of month 7.30-9pm Bowls and Social Club
 Henham & District Garden Soc. 1st **Tuesday** of month 2 for 2.30pm Memorial Hall
 Community Choir 1st & 3rd **Tuesday** of month 7- 8.30pm Village Hall
 Life Drawing 2nd and 4th **Tuesday** of month 7.30 - 9.30pm Village Hall
 Village History Society 2nd **Wednesday** of month quarterly 7.45pm Memorial Hall
 Women's Institute 3rd **Thursday** of month 7.45pm Memorial Hall
 Gong Baths 4th **Thursday** of month 7.30pm Memorial Hall
 Church Lunch Club 2nd & 4th **Friday** of month 12.30pm Memorial Hall
 Elsenham Farmers' Market last **Saturday** of month 12.30 - 2.30pm Village Hall

April 2025 diary

Tues 1	Henham & District Garden Soc.	Memorial Hall for 2.30pm
Tues 1 & 15	Elsenham Community Choir	Village Hall 7pm
Thurs 3	District Councillors' Surgery	OSCA, Henham 6pm
Fri 4	ECA Race Night	Memorial Hall 6.45 for 7.30pm
Sat 5 & 19	Bingo	Bowls & Social Club 7 for 7.30pm
Sunday 6	Floral Workshops	Memorial Hall 10am, Noon, 3pm
Mon 7	Parish Council Meeting	Memorial Hall 7.45pm
Tues 8 & 22	Life Drawing	Village Hall 7.30pm
Fri 11 & 25	Church Lunch Club	Memorial Hall 12.30pm
Sat 12	Tennis Club Quiz	Bowls & Social club 7.30pm
Mon 14	Natter Night	Golf World Stansted 7-9pm
Thurs 17	WI	Memorial Hall 7.45pm
Fri 18	Good Friday Ramble	Playing Field Car Park 2.30pm
Thurs 24	Teddy Bear Music	Memorial Hall 9.30am
Thurs 24	Gong Baths	Memorial Hall 7.30pm
Sat 26	Famers' Market	Village Hall 12.30 - 2.30pm
Mon 28	Elsenham Eagles	Bowls & Social Club 7.15pm



Mobile Library ** new day**
Every third Saturday stopping at Glebe End
9.30am to 10am Next visit: 12 April

Elsenham Village Regular Weekly Activities

Day	Time	Activity	Location
Monday	9.30-10.30am	Zumba	Memorial Hall
	10.30-11.30am	Health walk	Start at De Mandeville Green
	4-4.30pm	Rascals (3-4yrs)	Memorial Hall (term time)
	4.30-5.30pm	Rascals (5-7yrs)	Memorial Hall (term time)
	5.30-7pm	Rascals (8-12yrs)	Memorial Hall (term time)
	7-7.45pm	Pilates	Elsenham Village Hall
	7.30-8.30pm	Shape to the beat	Memorial Hall (not 1st Monday)
Tuesday	9.30-10.15am	Touchpoint Food Share	Bowls & Social Club
	9.30-11.30am	Village Café Coffee	Memorial Hall
	4.45-5.45pm	Rainbows	Memorial Hall (term-time)
	4.45-5.45pm	Beavers	Ugley Village Hall (term-time)
	6-7.15pm	Cubs (Wolf Pack)	Ugley Village Hall (term-time)
	6-7.30pm	Brownies	Memorial Hall (term-time)
	7.30-10.30pm	Tennis Club night	Tennis Courts
	8pm	Fitness Yoga/Pilates	Memorial Hall
Wednesday	9.45-11.30	Tots and Toddlers	Memorial Hall
	5.30-7pm	Slimming World	Memorial Hall
	6.30-7.15pm	Women's strength and Mobility	Village Hall
	7-9pm	Scouts	Ugley Village Hall (term-time)
	7.30pm	Aerobics	Elsenham Village Hall
Thursday	6-7.15pm	Cubs (Bear Pack)	Ugley Village Hall (term-time)
	6.45-7.45pm	Jump Fit	Elsenham Village Hall
Friday	10-11am	Little Fishes	Memorial Hall (term-time)
Saturday	8.15am-1pm	Tarte au Citroen	Playing Field
	9-10am	Dance Scene	Memorial Hall
	9am-12pm	Youth boys & girls football	Playing Field
	8.45-9.30am	Little Kickers Mighty	Village Hall (term time)
	9.35-10.20am	Little Kickers Junior	Village Hall (term time)

Ella Bella BEAUTY

Nails

Acrylics - Builder Gel - Gel Polish

Facial Treatments

Dermaplaning - Microneedling - Galvanic

High Frequency - Chemical Peels

Hydro Gen - Radio Frequency

Brow & Lash Treatments

Brow Lamination- Lash Lift

Brow & Lash Tints

20% OFF

Introductory Offer
Your First Treatment

Limited Time

Hall Close Henham, CM22 6AU

Tel: 07525 475954

Insta: ellabellabeautyuk

CARPETS 2 U

Carpet, laminate, Lvt, vinyl, karndean
All types of flooring done

The best for less

Latex floor levelling, plyboarding preparation
Old uplifted and disposed of
Plenty of choice brought to your home

I try to give the best quality for your budget.
30 years' experience

Steve 07939 739845
Carpets2u@icloud.com

THE NEWS REPORT

From The Editors



April has finally arrived, bringing some better spring weather with it. At last!

This month's issue is reflective of that seasonal change with Elsenham Flower Show Society, Elsenham Tennis Club and the cricket club making sure they get good coverage. Perhaps you would like to participate in some of their activities, or perhaps you may be more interested in one of the other organisations who regularly contribute articles? Whatever you decide, you have plenty to choose from within these pages.

April also takes us one step closer to having to make a decision on the future of this magazine. The debate has been focussed on how best we can continue to provide a service to the ever expanding population of Elsenham. As our plans become firm actions, we will keep you informed.

Whatever the outcome, Elsenham News will continue but not necessarily in a printed format.

In the meantime, please do take advantage of the information provided inside by the many organisations who contribute to the magazine and use it to enjoy your life here in Elsenham.

Did you know that Elsenham News is available on the ECA Website

www.elsenhamcommunityassociation.org.uk



Regular features

Parish Council	7	Church Calendar	27
Development Developments	9	U3A	29
Village History Society	11	Community Choir	31
Daisy May's Farm	13	100 Parishes	35
Elsenham WI	15	Cricket Club	37
District Councillors' Report	17	Bowls Club	39
Ray's Reflections	19	Tennis Club	41
EFSS	21	Book review	43
Elsenham Tennis Club	21	Cookery Corner	45

GLYNN'S CHIMNEY SWEEPS

Est. 1995



VACUUM AND BRUSH

NACS MEMBERS HETAS APPROVED

COMPETITIVELY PRICED

01279 424983

www.glynnschimneysweeps.com

JLT ROOFING

07974 953162

All roofing works undertaken, including :

- *Slating
- *Asphalt
- *Tiling
- *Flat Roofing
- *Leadwork
- *Fascia and Soffit
- *Guttering

*All works fully guaranteed *

PROFESSIONAL RELIABLE AFFORDABLE

Please contact for a free no obligation quote:

07974953162 info@jltroofing.co.uk

COOK UPHOLSTERY

www.taylorandcookltd.co.uk



Don't Replace It ... Re-cover It !

Any Item Reupholstered

Sofas • Armchairs • Headboards • Divans •
Kitchen Chairs • Ottomans

Wall Padding

Create a beautiful feature wall in your lounge or
bedroom • Large Choice of fabrics and designs

Call Gary on 07787 518022

Email: garycook99@btinternet.com

Text or email a picture for an immediate quote

THINKING OF SELLING OR RENTING YOUR PROPERTY?

Please call either of us to find out
how we can help make your move
a whole new experience!

Nicola 07909 548028
Jacqui 07956 513238



ELSENHAM PARISH COUNCIL

By Louise Johnson, Clerk.

✉ louise.epc@gmail.com ☎ 07456 791727



Two years ago, Elsenham Parish Council paid the invoice of £1,500 to UK Power Network to connect the electric to the streetlight outside the Elsenham Surgery. It took just over 18 months for the company to carry out the work after which they sent another invoice for a further £4,897.20. After many months of phone calls and emails to UK Power Network contesting this invoice, they have finally agreed there will be no further charge and have cancelled the invoice.

The Parish Clerk attended a meeting with Essex Association of Local Councils (EALC), regarding devolution. The Government has confirmed they had accepted the request of Essex County Council, Southend on Sea Council & Thurrock Council to be part of the Priority Devolution Programme.

The three councils will combine as a Strategic Mayoral Authority for Greater Essex. Mayoral elections will be held in May 2026. Essex County Council elections due this year have been cancelled. The Government has also made it clear that they will not bail Thurrock Council out of their debt. There is little information on how devolution will affect parish/town councils as they are not mentioned in the Government's white paper. However, reorganisation will mean the transfer of some assets and responsibilities down to parish and town councils, most likely without any funding.

After much discussion the Parish Council have agreed to part fund a PCSO from April 1 2025 to March 31 2026. The council have part funded a PCSO in previous years with conflicting opinion regarding the amount of funding required against the time the PCSO actually spends in Elsenham. To part fund a PCSO for just under 5 hours per week is £6,187.50 per year.

The Climate Change committee would like to modify all EPC's streetlights in Station Road and New Road to LED. Some of the advantages for LED lights are, they use less electricity than traditional streetlights, lower energy bills due to reduced electricity consumption and reduced CO2 emissions. The committee will also be mindful of biodiversity and ensure the new lights are not harmful for insects.

Stephenson Bus company were unable to provide their service at the end of February to the beginning of March due to both Grove Hill and Pound Lane being closed at the same time. The company said they had done their best but just couldn't get in or out of Elsenham!



Elsenham Tots & Toddlers Group



We meet in the Memorial Hall on Elsenham Playing Field

Wednesdays at 9.45am to 11.30am (Term Time only)

All are welcome - Mums to be, babies & toddlers up to 5years - with mum or dad, grandparent or carer

MEET OTHERS

MAKE FRIENDS

We have a very safe and friendly environment in which to play and have fun

**Drop in for a chat and a coffee - Your first week is free
Then it's £3 per adult & first child,
50p per additional child over 12 months**

Please message Dawn on 07944 841358 for more information

Lots of Toys

Have Fun



Elsenham Tots and Toddler Group



Options Hair Design
2 Ambrose Corner, Elsenham
01279 812665
www.optionssalon.co.uk

At Options Hair Design we work hard to provide the very best of care to our clients.

From the moment you enter our salon our aim is for you to feel like the most confident and beautiful version of yourself.

Our dedicated and talented team of professionals use the very best and innovative, organic products to achieve the look that you want for your hair. We work with you to achieve this as we believe that confidence comes from a hairstyle that you are happy with.

Our team of five stylists each bring with them a wealth of experience, and each display their own creativity whether in colouring, cutting, styling, or finishing.

Our ethos is that the salon experience we provide ensures you leave feeling relaxed, pampered and confident.

DEVELOPMENT DEVELOPMENTS

By *Graham Mott* ☎ 812516 ✉ motts@grahammott.plus.com



Developers will happily, indeed merrily, make all sorts of commitments when they are applying for planning permission. Once the permission is granted, however, getting them to comply can be another matter.

Uttlesford District Council's Planning Department has an Enforcement division which can take legal action, but rarely does so, preferring to use gentle persuasion and an occasional unconvincing threat. They point to their limited resources, and the fact that, remarkably, there is no legal obligation on them to take enforcement action at all.

Bloor Homes agreed when their application for 350 off Henham Road was approved that they would provide a new cycleway/walkway to the station, to run close to the railway line, and to be made available before 80 houses are occupied. The current count is at least double that number, but the new amenity is not available. Much of it has been constructed, but after a short distance there is a diversion to a temporary path which takes the long route around the north and east of their site. It is only about one metre wide and the surface is not up to much. But it seems obvious that it is intended to be there for an extended period, and indeed residents have been told that the path as agreed will not be available until late 2026. Whether Uttlesford will enforce the obligation remains to be seen.

Shortcomings are revealed most obviously when developments near completion. All the homes on the two Dandara sites are now occupied. From the Crown Drive development, off Stansted Road, a new footpath leads to the north towards the Public Right of Way near to the footpath over the motorway. Unfortunately the surface has too much sand, and soon turns into a sort of glutinous yellow goo - expect to pick up half an inch or so (or metric equivalent) and leave a trail all along the pavement if you're heading in that direction. The new footpath passes close to the children's play area, which is nearly complete, but it has been fenced around for many weeks, no doubt to the frustration of parents on the development, who must be wondering whether it will be available before their small children approach adulthood. The landscaping should be completed, but the area is mostly barren, and the developers have failed to complete the fence along the top of the bank which in any event has proved surprisingly ineffective in baffling noise from the motorway.

On the other Dandara site, off Isabel Drive, the Public Right of Way alongside Als Wood has been much improved, but unfortunately the surface is identical to the Stansted Road site, with the same problem of excess stickiness. There is also a gap at each end, and thus inevitable mud for most of the year. On this site, two areas at the end of cul-de-sacs have been left barren, without so much as a gesture towards the attractive landscaping on the approved plans. It's disappointing, but also only to be expected.

Luxury Toilet Hire (UK) Ltd



Whether you are arranging a wedding, private party or corporate event, let Luxury Toilet Hire (UK) Ltd provide you with the perfect toilet facility to make your occasion a memorable success.

Cesspit emptying also undertaken.

Tel: 01371 873003 or 01279 504638

Email: info@luxurytoilethire.co.uk

Web: www.luxurytoilethireltd.co.uk



We also hire out mobile fridge and freezer units.



Please contact us for a quote:

Tel: 01371 873003 or 01279 504638

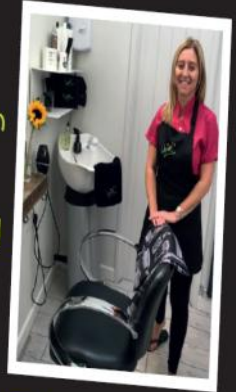
Email: info@chillermatic.com Web: www.chillermatic.com

★ ★ ★
Clare's Gents hairstylist
@ Rickling Green

★ Appointments from
7am Mon-Sat

★ FREE easy parking

★ Fully qualified
& insured



Call: 01799 542424

Text: 07791 058406

City &
Guilds
Qualified



hpc (State Registered) Chiropodist

CH09088

Home Visiting Practice

Mrs. Julie Golden
Est. 1994
01279 873492

A professional service at a
competitive rate



New Classes Every Saturday
morning Elsenham Memorial Hall

Baby Ballet - 9:00-9:30

(Ages 3-5)

Junior Ballet - 9:30-10:00

(Ages 6-8)

Musical Theatre/ Street - 10:00-10:45

(Ages 5+)



For more information and to
book a free trial please contact-

Lorraine Hodges -07711 745193
lorraine@dancescene.me.uk

Come along to our new fun
classes and get involved at our
well established dance school!



ELSENHAM VILLAGE HISTORY SOCIETY

By Mike Rea, Secretary ☎ 813634 ✉ evhs12@hotmail.co.uk

🌐 www.elsenham-history.co.uk



Following last month's article about Elsenham's wells, our thanks go to Dave Gascoine of Henham Road who contacted us with details of an extant well that can be added to the list. If anyone else has any more information they can offer about our wells, please get in touch.

From time to time, we receive enquiries via our website which we always try to answer. Recent enquiries have involved a gentleman who was trying to find burial records for his grandfather who we were able to show was cremated in Enfield, Another, was a query asking what trains called at Elsenham Station in the summer of 1939. A delve into the LNER (London and North Eastern Railway) Eastern Counties summer timetable valid from 3rd July to 24th September 1939 produced the requested information which I thought might be of interest.

The timetables revealed that Elsenham was served on weekdays that Summer by 10 trains per day from London Liverpool Street between 7.22a.m and 9.30 p.m. In the other direction there were 13 trains per day originating from Norwich and Cambridge between 7.36 a.m. and 9.57 p.m. Sundays appear to be rather sparse with only four trains in either direction. The fastest train to London took just under an hour and a half and to Cambridge 34 minutes. Of course, there were also weekday services only between Elsenham and Thaxted; six from Elsenham and five from Thaxted.

By comparison, today weekday services are a little under 30 trains each way between London and Cambridge; 20 each way on Saturdays and 16 each way on Sundays.

Did you know there was a Prisoner of War Camp at Hatfield Heath during WW2? No, neither did I. Remnants of the camp still exist although some of it is rapidly disappearing under housing. Prisoner of War Camp 116 was set up in 1941 to house Italian prisoners of war, but from 1943-1944 it mainly held German and Austrian prisoners who were set to work on the land. This work was totally voluntary and the lifestyle quite enjoyable in comparison to the life British POWs endured in German hands. The camp, which was built for about 750 people was non-Nazi, so was classed as low risk.

If you want to know more about Camp 116 then come along to our meeting on Wednesday June 11 at 8pm in the Memorial Hall. The speaker will be Mark Ratcliff who will tell the full fascinating story. Visitors of course are always welcome at our meetings for a very modest £2 but even better, membership still costs just £5 for a full year's meetings. What a bargain!

WE PUT THE HOT IN YOUR WATER & THE HEAT IN YOUR HOME

- Central Heating, Boiler replacement
- Boiler servicing & Repairs
- General Plumbing



Call Mark - 07908005478
Email - nelsonplumbingheatingltd@gmail.com

Nelson & Sons Plumbing & Heating LTD



DREAM, EXPLORE, Discover

OFFER
10% OFF
YOUR NEXT BOOKING USING THIS ADVERT.

YOUR LOCAL *Personal Travel Consultant*

We can look after all your travel requirements including hotels, flights, package holidays, villas, cruises, car hire and much more.

*Subject to availability. Only available on selected deals. Please mention advert when requesting a quote.

Carla Jayne at Hays Travel cj_haystravel

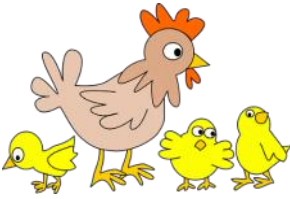
01279 886731 | 07590 804702 | carla.jayne@hays-travel.co.uk
haystravel.co.uk/personal-travel-consultants/carla-jayne

Hays Travel



Advertise your business in
Elsenham News
Contact us at

elsenhamsnews@hotmail.co.uk



Daisy May's Farm

Hall Road, Elsenham, CM22 6DN

How lovely it is to be able to show off our lovely farm to all our visitors. Thank you so much for coming to see us.

We have SO many babies around the farm and they are ALL so cute, so do NOT miss out on coming to see our small animal area in the woods, cuddling the orphans (be they lambs or goats), feeding our animals, themed arts and crafts, playing in the Woodland Trail or having a ride on our train and you can also enjoy a cuppa and a cake!

As if that wasn't enough, you can also FEED A LAMB, HOLD A CHICK OR DUCKLING or CUDDLE A KID and there will even be a GOLDEN EGG HUNT too!!!

At the moment we are open every day until 4pm, so make sure you come and see us at any time, but particularly in the EASTER HOLIDAYS! Please do check our Facebook page for any updates.

There is no need to pre-book and entry is only £6 each, but please be aware we have no credit card facilities and ALWAYS WEAR YOUR WELLIES!!!!

If you have a child's birthday coming up, why not have your party with us at the farm? Perhaps you arrange school trips? Then come and have a chat with us, we love having the school children here and they love coming here for an informative and fun day out!

There is so much going on at our farm at the moment, so we really hope to see you.



We **always** need help in so many ways, particularly when there is **so** much to do. So if you have a little time to spare, **please** get in touch, we would **love** to hear from you. Please contact ' 07747 787973 or take a look at our website 8 www.daisymaysfarm.org to find out more. Thank you so much.



TRADITIONAL DRIVEWAYS

☎ 01992 450356

☎ 07961 882027

✉ tdmaintenance@btinternet.com

www.tdms-driveways.com

Block paving specialists. Black and red tarmac. Hand and machine laid tarmac. Turfing and fencing. Residential and commercial. All work guaranteed. Free estimates.



LOGS LOGS LOGS

- Well seasoned hard wood
- Transit load / bulk builder bag
- Cut to fire size

Call today ☎ 01279 718555

Or email ✉ dar13@mail.com



Kitchens • Bathrooms

Electrics • Conversions

Fully Qualified Experienced Tradesmen

All other aspects of building

Get in touch today for a free estimate

Office: 01279 814296 Mobile: 07714 300920

Email: camwoodhome@outlook.com

www.camwoodhome.co.uk



camwoodhome



ELSENHAM WOMEN'S INSTITUTE

By Moyra Jackson ☎ 647351



April showers? I would need a crystal ball today to answer that as I am writing this early March when we have just had a lovely spell of spring weather. So nice not having to 'layer up'.

Last month was another busy one for Elsenham WI. We have relocated to the Golf Club for our monthly Natter Night, and they have made us very welcome. So welcome in fact that we have all met there twice for lunch since I last wrote.

Three of us went along to Hatfield Broad Oak WI. This is one of the local WIs that we exchange invitations with and often attend one another's meetings. It was lovely to catch up with our friends there.

For our Show the Love meeting, the fabulous Holly Roberts who trades under the name 'Jean Genie Denims' was our speaker. Not only does Holly give a talk on issues surrounding fast fashion including throwing clothes into landfill, but she also recycles denim jackets. With her Art Teaching background these denim jackets are indeed transformed into works of art, some using scraps of leather that would normally be thrown away.

Our April meeting is sure to be an arresting talk (sorry) from Essex Police Fraud Protection Unit about the very topical subject of 'Scams/Fraud – how to identify and prevent them'. The competition is something beginning with the letter 'P'.

Coming along to Elsenham WI is a really good way to make friends especially if you are new to the area. The 'Jam and Jerusalem' traditions of our formation in 1921 have allowed us to grow and develop into the modern and forward-looking WI that we are today. We are happy to dispel any of the stereotypes associated with the WI – but our cakes are delicious! Why not come along (or come back) – visitors and new members are always welcome, and you can join at any time throughout the year.



Details of our programme, events and activities can be found on Facebook, Twitter and Instagram – search for Elsenham WI. Visitors are welcome to our monthly meetings so please come along. We meet at 7.45pm on the third Thursday in the month in the Memorial Hall.

Elsenham WI – There's a lot going on!



Double Glazed Units – SAME DAY

- Table Tops
- Shelves
- Emergency Glazing
- Replacement Misted Double Glazing
- Greenhouse Glass
- Cat and Dog Flaps Fitted
- Splash Backs – Any Colour
- Glass Cut To Size
- Emergency Boarding
- Safety Glass
- Mirrors

LOCAL COMPANY – GREAT PRICES – RELIABLE PROMPT SERVICE

Elsenham – Great Dunmow – Bishops Stortford - Stansted



01279 871 777 - 0800 587 2556

6 Newman Road, Little Canfield, Dunmow, Essex, CM6 1GR

MEDIACOMS

Aerial Satellite | AV Security

- Aerial Installations
- CCTV & Security Alarms
- Audio Visual Installations
- Wireless & Wired Networks
- Solar Panel Installations
- Sky Installations & Subscriptions
- Freesat Installations & Receivers
- Multiroom Music & TV Distribution
- TV Wall Mounting Services
- Family Run Business



www.mediacoms.co.uk

info@mediacoms.co.uk

DISTRICT COUNCILLORS' REPORT

✉ Cllrdonald@uttlesford.gov.uk

☎ 07941 880279

✉ Cllrlees@uttlesford.gov.uk

☎ 07713 074656



As we write we are preparing for a meeting on March 19, agreeing to put our name to the letter stating we will reorganise the District Councils in Essex, to become Unitary Authorities. It is a time consuming exercise.

On a lighter note, 2025 Uttlesford Business Awards shone a spotlight on the remarkable stories and the vibrant business community here in Uttlesford. There were almost 180 nominations for 72 businesses across 12 categories, which was narrowed down to a shortlist of 39 businesses from different sectors. These awards are a wonderful opportunity to celebrate and recognise the innovation and excellence of local businesses and the value they bring to our communities. It was an inspirational evening and we are proud to celebrate their achievements – the coveted Uttlesford Business of the Year title was given to Chater's. Do visit their inspirational Café in Saffron Walden. Elsenham Post Office were nominated and though sadly didn't win the People's Choice award, we residents know they are absolute winners locally.

We have supported the **I am more** Exhibition- Presented by Uttlesford Foodbank. As we know, hardship can happen to anyone. **I am more** invites compassion and greater understanding for how people's circumstances can change. **I am more** illustrates the emotional impact of our prejudice and how individuals grappled with the stigma and labels we are so ready to apply to others when they have hit their lowest point. It is very moving and encourages it to look beyond labels. It will be on loan to schools, churches, and community groups across the district. So do look out for the exhibition.

The Council budget was approved in February. The budget aims to maintain service levels, protect residents on low incomes, and limit the rise in council tax bills to a below-inflation rate of 2.99 per cent.

Despite government funding cuts and mounting financial pressures on local councils, the district has expressed confidence in its financial position. It plans to continue investing in services, the decarbonisation of its estate, and will set aside nearly £20 million for new council homes. Uttlesford District Council keeps just under 8 pence in every pound of your Council Tax.

We will be holding our usual monthly surgery on Thursday April 3 at OSCA, Henham at 6pm. We look forward to meeting residents without making any prior appointment. As ever, of course, we would be very happy to hear from any residents by email or phone should there be anything you think we can help with or answer any questions you may have on our report, or the District Council.

E. N.C. Electrical Limited

Industrial Agricultural Domestic

Electrical Installations

Fire Alarms/Emergency Lighting

Fault Finding

Portable Appliance Testing

Fixed Wiring Test & Inspection

Over 25 Years Experience in the
Electrical Industry

Contact: Ian Arran

Tel. 01279 647042
Mobile 07776 252994



Email: enelectri-
calltd@btinternet.com

44 Alsa Gardens Elsenham

Bishop's Stortford Herts, CM22 6HB

replaceglaze^{inc}
Replace, Repair & Revive Your Double Glazing

All types of double glazing repairs, maintenance & installations, including emergency callouts. At replaceglaze.com we provide a reputable, family-run double glazing repair & installation service.

Our services include:

- Double glazing installations, repairs & maintenance
- Aluminium, composite & uPVC installations
- Windows & door handles
- Locks & hinges
- Misted units
- Patio door wheels
- Door adjustments & lubrication
- Aluminium bifolding doors
- Composite doors
- Aluminium/uPVC roof lanterns

01279 282997 01371 701000

info@replaceglaze.com www.replaceglaze.com

[replaceglaze](https://www.instagram.com/replaceglaze)

TAKELEY IRONING & DRY CLEANING

OPENING TIMES
MONDAY - FRIDAY 8AM - 5PM
SATURDAY 8AM TO 12PM

FREE LOCAL COLLECTION & DELIVERY TO YOUR DOOR

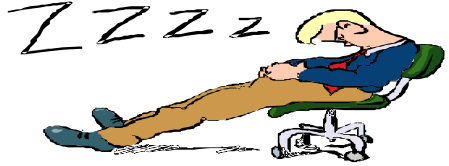
Takeley, Elsenham, Henham, Stansted, Felsted, Hatfield Broadoak, Hatfield Heath, Sheering, Dunmow, Sawbridgeworth, Broxton, Spellbrook, Molehill Green, Broxton, Little Canfield.

- ✓ WASHING & IRONING
- ✓ IN HOUSE DRY CLEANING
- ✓ 48 HOUR SERVICE
- ✓ DUVETS
- ✓ CURTAINS
- ✓ ALTERATIONS
- ✓ WEDDING DRESSES

The Centre, Dunmow Road (Behind Londis)
Takeley, Bishops Stortford
Herts, CM22 6SH

Email: takeleyironing@gmail.com
takeleydrycleaning@gmail.com

Tel: 01279 871245



Gin & Toffee Line

The main railway came to Elsenham in 1845; however, a small branch line was to open on 31st March 1913, the first sods being cut by Sir Walter Gilbey at Hill Farm, the site of the Thaxted Station. He helped to finance the project. He was our first Parish Council Chairman and a great local benefactor. He paid and built our "old" Village Hall. In addition, he gave land and paid for the Memorial Cross. He lived for some time at Elsenham Hall.

Known affectionately as, "The Gin and Toffee Line," it ran from Elsenham Station to Thaxted, passing through Henham. It derived its name from Gilbey's Gin production and the Henham Factory, "Lees," which made sweets. You could board the train, which ran from the rear of the existing Elsenham platform, to Liverpool Street. There were a number of "Halts" between Elsenham and Henham, the final Terminus being Thaxted.

The London to Thaxted journey time, as late as 1937, was two hours and 28 minutes. The long journey time was due to two reasons, the waiting time to allow passengers to purchase their second ticket and speed restrictions on the line due to the number of unmanned road crossings.

Used to carry both passengers and goods, this much-loved service ran until 1952. I had the honour of travelling with my mother on its final passenger run. Before it departed from Elsenham Station, a coffin was, symbolically and with great reverence, carried across the railway tracks.

Photos of Elsenham, both historical and more modern, can be viewed on the "Elsenham Village History Society," web site. Just "Google", or go to and visit
📄 www.elsenham-history.co.uk

Ray
Franklin's

GARDEN HINT *By Sue Johnson*

Start weeding: Getting on top of weeds now will be a big help later in the year. Regularly hoe off annual weeds and keep an eye out for any perennial weeds that are re-growing and dig them out.



- alun
- design
- consultancy
- architectural design
- planning
- project management
- interior design

Local architecture company with over 25 years experience designing and obtaining approval for new homes, extensions and conversions

Free consultation
01799 540 600

info@alundesign.com

www.alundesign.com

Neville House, Station Road,
Wendens Ambo, Saffron
Walden, Essex, CB11 4LB

DANIEL ROBINSON & SONS

Independent Family Funeral Directors & Monumental Masons

Est 1892

Always here when you need us...

- Arrangements in the comfort of your own home, if preferred
- Private Chapel of Rest
- Pre-paid funeral planning services
- Traditional & contemporary funerals to suit your wishes



79/81 South Street
BISHOP'S STORTFORD
01279 655477

www.drobinson.co.uk

ELSENHAM FLOWER SHOW SOCIETY

✉ suewaite2003@yahoo.co.uk or

✉ lynda.jolly@btinternet.com



Plant Sale Saturday May 17 10am - 2pm

Flower Show Saturday August 16 3pm - 5pm

The PLANT SALE will be held in the Memorial Hall Saturday May 17. There will be a good variety of flowers and vegetables as the committee and a few voluntary helpers are starting to sow the various seeds to sell this year. If you would like to donate any spare plants you have or volunteer to grow any plants they will be gratefully received., please contact Sue Waite or Lynda Jolly (see above for contact details) with the names of your plants. If you require any plant pots we can supply. All proceeds from the plant sale goes to the costs of the Flower Show in August.

The FLOWER SHOW will be held in the Memorial Hall. You will find a schedule in the centre of the magazine along with the entry form. These will also be available from the Post Office and at the Station. So if you want to show your best flowers and/or huge vegetables that you have grown PLEASE send your entry forms in. There are also competitions for baking, crafting, photography and many more. Please send the entry form asap.

There will not be an OPEN GARDEN event this year as they are held every two years, so the next one is in 2026. Please support the Elsenham Flower Show Society. Hope we see you soon.

ELSENHAM TENNIS CLUB



Elsenham Tennis Club offers bespoke membership packages. Our playing year is 1 April 2025 – 31 March 2026 so the ideal time to join now. We have some of the most reasonably priced subscriptions in the area.

www.elsenhamtennisclub.co.uk

<https://www.facebook.com/groups/elsenhamtennisclub>

Adult: £80
Couple: £145 (living at same address)
Family: £155 (includes 2 adults and all children living at same address)
Senior: £50 (65 and over)
Student: £45 (must provide a valid student card at time of sign-up)
Junior: £20 (under 18)

We have two all weather courts, floodlights so you can play before or after work. We are situated right in the heart of the village, on the playing field. You will get your own key to access the courts, can book online at your convenience and participate in our club events such as club nights, weekend or morning play sessions.

April 2025

ST MARY'S CHURCH ELSENHAM
Office@heuchurch.co.uk
Thought For The Month by *Louis Wilson*

Darlene Deibler Rose was an American missionary in Indonesia (or the Dutch East Indies as it was known) at the start of the Second World War. After the Japanese invasion, she spent four years in a prisoner of war camp and was separated from her husband whom she never saw again.

There was suffering and death all around her. But also, incredible sacrifice. The camp was plagued by rabid dogs which would come in without warning from the jungle. One bite and you would die a violent, painful death.

She tells the story of a beautiful young Dutch woman called Toos. One night there was an air raid, so a group of women were sheltering in a trench when a clearly rabid dog came at them in the dark.

They were all in serious danger so Toos jumped out of the trench, grabbed the dog with her bare hands and held it while another woman killed it with a knife. But of course, Toos was bitten and scratched all over, and contracted rabies.

There was no cure and so she had to be isolated alone in a hut until she died. Afterwards, Darlene wrote: when her death came, each of us died a little. Fully aware of the implications, she gave her life that others might not die.

In a tiny way, that is a story which illustrates the events we will be celebrating this Easter. Jesus gave his life that others might not die. And if that was all his death meant, it would be an

amazing example of love and sacrifice.

But the Bible says his death is much more than an example. 2 Corinthians 5: 21 says: God made him who had no sin to be sin for us, so that in him we might become the righteousness of God.

On the cross, Jesus became sin, he was punished for sin, so that you and I need not be. And that is what we call penal substitution. Jesus' death was penal: he received God's punishment for sin. And it was a substitution: he died in our place. And it works only because Jesus was without sin. He was righteous.

You see, if like that young Dutch woman, I was brave enough and the opportunity was there, I could conceivably die in your place. I could die so you could live.

It's very doubtful that I would do that, but it's possible. But what I cannot do is be punished in your place, for your sin. The only way out is to find a substitute who's not due any punishment themselves; and who's willing to take our place. That is precisely who Jesus is.

This Easter, do join us as we hold activities and services across our benefice to celebrate Jesus' death and resurrection. On Sunday 13 April, we also have the Bishop of Ebbsfleet, Rob Munro coming to help us celebrate the reopening of Henham Church. All the details are in this magazine or on our website www.heuchurch.org

With very best wishes this Easter,

Louis

ELSENHAM FLOWER SHOW 2025 SHOW ENTRY FORM

Please tick carefully each class you wish to enter.



FLOWERS	22	42
1	23	43
2	24	44
3	25	
4	26	FLOWER ARRANGING
5	27	45
6	28	46
7	29	47
8	30	48
9	31 <i>EFSS TOP TRAY</i>	
10		HANDICRAFTS
11 <i>EFSS Top Vase</i>	PRODUCE	49
	32	50
VEGETABLES	33	51
12	34	52
13	35	53
14	36	
15	37	PHOTOGRAPHY
16	38	54
17	39	55
18		56
19	BAKING	57
20	40	
21	41	

EXHIBITOR'S CONTACT DETAILS

TOTAL NUMBER OF ENTRIES ENTRY MONEY ENCLOSED

NAME:

TEL. NO
 ADDRESS:

ENTRY MONEY - Each exhibit charged at 50p. For 10 or more entries total equals £5.00

Completed Entry Forms should be placed **IN AN ENVELOPE, TOGETHER WITH YOUR ENTRY FEES** and delivered to either:

Sue Waite, 1 Sant Road, (off Franklin Drive) Elsenham (07956 899326); or

Lynda Jolly, 2 Purcell Close (off Sant Road), Elsenham (07885258771)

BY SATURDAY 9TH AUGUST. LATE ENTRIES MAY NOT BE ACCEPTED.

FLOWER Classes:

1. A Vase of Roses no more than 5 stems *
2. 3 Cactus, Ball or Pompom Dahlia Blooms *
3. 5 Stems (each one a different flower) *
4. Flower Heads floating in a saucer of water
5. A Vase of Foliage – 5 kinds
6. My Best Bloom *
7. Flowering Pot Plant *
8. Foliage Pot Plant *
9. Succulent/Cactus in container - Max 20cm diameter
10. Fuchsias - 6 Flower heads (mounts supplied) *
11. EFSS TOP VASE

VEGETABLE/FRUIT Classes:

All vegetables and fruit shall be of the same cultivar, unless otherwise specified.

12. Herbs - one vase
13. 6 Hot Chilli Peppers (with some stalk attached)
14. 4 Carrots (with 7.5cm tops)
15. 4 Potatoes
16. 6 Pods of Runner Beans (with some stalk attached)
17. 6 Pods of French Beans (with some stalk attached)
18. 4 Tomatoes, not Cherry (ripe with stalk)
19. 6 Cherry Tomatoes (ripe with stalk) not exceeding 3.5cm
20. 1 Cucumber
21. 2 Courgettes (10-20cms long, or if round, 7.5cm dia. Approx.)
22. 3 Beetroots (with 7.5cms (3") tops)
23. 2 of the same kind of Vegetable not already listed
24. 3 Bulbs of Garlic
25. Heaviest Marrow *
26. Heaviest Onion *
27. Heaviest Potato
28. Longest Runner Bean
29. Longest Stick of Rhubarb
30. Plate of Fruit, one variety
31. EFSS TOP TRAY CLASS

PRODUCE Classes:

Jars to be filled and covered with clear cellophane tops except 37 and 39.

32. 1 Jar Marmalade *
33. 1 Jar Strawberry Jam
34. 1 Jar Raspberry Jam

35. 1 Jar Stoned Fruit Jam
36. 1 Jar Lemon Curd
37. 1 Jar Chutney
38. 1 Jar of Preserve, not already listed
39. Bottle of Home-made Liqueur (e.g. Sloe Gin) *

BAKING Classes:

40. Children's Birthday Cake *
41. Fruit Loaf
42. Battenberg Cake
43. Sausage Plait
44. Fruit Pie

FLOWER ARRANGING Classes:

All arrangements in the classes must use fresh flowers and foliage. Boards 60cms x 60cms (24" x 24") will be available upon which arrangements must be displayed, with the exception of Class 46. For classes 47, 48 and 49, arrangements must be displayed within the area of the board. No part of the arrangement may exceed the size of the board.

45. A Miniature Arrangement (**max.** 10cms (4") overall) *
46. 'Mother of the Bride' Corsage
47. A Dinner Table Arrangement in Purple and Pink *
48. A Musical Show

HANDICRAFT Classes:

No exhibit will be accepted which has been exhibited at a previous show or is more than three (3) years old.

49. An Article of Crochet *
50. A Hand Knitted Article *
51. An Article in Cross Stitch using Embroidery Silks
52. A Picture in Any Medium (max. size 45cms (18") square)
53. A Handwritten Limerick - 'There was a young woman called Nellie.' *
(to be mounted on card measuring 15cms x 20cms (6" x 8"))

PHOTOGRAPHY Classes:

Photographs should measure 15cms x 20cms (6" x 8") and labelled, and be mounted on stiff card, measuring no more than 18cms x 23cms (7"x 9"). Entries must be original photographic images; no computer created pictures will be accepted.

54. An Historic Building
55. Forest View
56. Wet and Wild
57. Shades of Blue

ELSENHAM FLOWER SHOW 2025

RULES OF THE SHOW

1. Competition is open to all living in the Parish of Elsenham. Outside exhibitors are at the discretion of the Committee.
2. Staging from 8.30 a.m. to 10.45 a.m. on the morning of the show.
3. Judging is from 11.00 a.m. (Public not admitted to this.)
4. Open to the public 2.30 p.m. Admission £1.00
Accompanied children are Free.
5. Entry money - Each exhibit charged at 50p. For 10 or more entries (total) equals £5.00.
6. Upon arrival, competitors will be given class cards, each one to accompany each article exhibited. Each competitor will be given an exhibitor's number. Vases, paper plates and saucers will be made available.
7. All exhibits must be grown or made by the exhibitor (with the exception of the Flower Arranging Classes).
8. Only one exhibit allowed in each Class per person. **Please note that only entries with one name per exhibit will be accepted.**
9. Certificates will be awarded to the first three placings in each Class.
10. **Each** exhibitor must complete an Entry Form. Entry Forms, together with appropriate fees, must be submitted to Sue Waite or Lynda Jolly by **Saturday, 9th August 2025** -see entry form for details.
11. Additional copies of the Entry Form can be obtained from Sue Waite, 1 Sant Road or Lynda Jolly, 2 Purcell Close Elsenham. Copies also available at the Post Office and Ticket Office Railway Station
12. The Society will not accept responsibility for any damage caused to exhibits before, during or after the Show.
13. Points for each Class will be awarded as follows: 4 points for a 1st; 3 points for a 2nd; 2 points for a 3rd and 1 point for Highly Commended. The Parish Council Shield will be awarded to the exhibitor gaining most points overall.
14. The judge's decision is final. Awards/points may be withheld from any exhibit of insufficient merit.
15. Trophy winners are responsible for loss or damage to the Society's trophies whilst in their possession. Please ensure that our trophies are covered by your household insurance.
16. No exhibitors' entries can be moved without the permission of stewards.

Any queries to: Sue Waite (Treasurer), 1 Sant Road. Email suewaite2003@yahoo.co.uk

CHURCH EVENTS IN OUR VILLAGES APRIL 2025

Church Services

Sunday 6th April

08:45 Prayer Book Holy Communion,
Elsenham Church

10:00 Morning Service, Ugley Church

10:30 Morning Service,
Elsenham Village Hall

18:00 Sunday@6, Henham Church

Sunday 13th April

08:45 Prayer Book Morning Prayer,
Elsenham Church

10:00 Morning Service, Ugley Church

10:30 Morning Service,
Henham Church

17:30 A service of thanksgiving for the
reopening of Henham Church with Bishop
Rob Munro, Henham Church

Friday 18th April Good Friday

12:00 Hour at the Cross, Ugley Church

13:30 Village Good Friday, Elsenham
Memorial Garden

Easter Sunday 20th April

09:30 Easter Service,
Elsenham Church

10:00 Holy Communion, Ugley Church

10:30 Easter Service, Henham Church

Sunday 27th April

08:45 Prayer Book Morning Prayer,
Elsenham Church

10:00 Morning Service, Ugley Church

10:30 Morning Service,
Henham Church

18:00 Sunday@6, Henham Church

Henham Easter Egg Trail

Sat 19th April 2 - 4:30pm

Collect a map from outside Church Hall,
Carter's Lane Henham



Other Regular Events

SUNDAYS:

**Elsenham & Henham Sunday Club/
Explorers (Reception-Y5)
(Y1-Y6) leave from service to meet in
Church Room, Henham Church,
10.30am**

Sundays: 27th

**Pathfinders (Y6-Y9)
Henham Church 6.00pm - leave from
service to meet in OSCA, Henham.**

Sundays: 27th

**Crammin' (Y10-Y13)
Henham Church 6.00pm – leave from
service to meet in Church Room,
Henham Church.**

Sundays: 27th

MID-WEEK AND SATURDAY:

**Seekers After School Bible Club
(Y3-Y4) Old Frank's 3.20pm**

Mondays: 28th

Christian Play (Y1-Y2)

Rowan House, Elsenham 3.15pm

Tuesdays: 22nd & 29th

**Little Fishes Pre-School Group
Church Hall, Henham 10.30am**

Thursdays: 24th

**Little Fishes Pre-School Group
Elsenham Memorial Hall 10.00am**

Fridays: 25th

Church Lunch Club

Elsenham Memorial Hall 12.30pm

Fridays: (2nd & 4th Friday of the month):
11th & 25th

* **HUSCH:** *Henham & Ugley School Hall*

For information on all these events,
please contact office@heuchurch.co.uk



SDS Installations Ltd

AERIAL AND SATELLITE SERVICES
FOREIGN SATELLITE SYSTEMS - CCTV - EXTRA TV POINTS - SKY LINK UPS
PHONE POINTS - HOME SIGNAL DISTRIBUTION - WALL MOUNTED PLASMA/
LCD SCREENS - CABLES SUPPLIED AND HIDDEN

Alan Smith
50 Sunnyside
Stansted
Essex CM24 8AX

01279 279012
07771 881042
sdsinstallations@hotmail.com
sdsinstallations.com

NEW BEGINNINGS COUNSELLING

A safe environment to explore your thoughts and feelings

A private practice with parking based in Takeley

Represented by Michele Simpson MBACP

Ever felt sad, overwhelmed, lost or just not quite right? Most people at some point in their lives have felt so overwhelmed that they find it impossible to see a way out of a situation.

My beliefs are that everybody has the resources within themselves, given the right environment, to experience therapeutic change. Give me a call to see how I can help you to improve your life.

Counselling could enable you to have that new beginning
phone: 07956 224954 or 01279 879009

email: ms@newbeginningscounselling.co.uk

www.newbeginningscounselling.co.uk

JOHN COLEBY

Experienced Interior and Exterior Decorator

For a friendly, reliable service please telephone

01279 815510 or 0793 9070818

for a free estimate

Taylor Computer Services (Stansted)

On-site Computer Maintenance/Repairs

DON'T BE RESTRICTED TO OFFICE HOURS, I CAN VISIT YOUR HOME OR OFFICE DURING THE DAY, EVENINGS OR WEEKENDS AT A TIME TO SUIT YOU.

Email and Broadband Setup, Data Transfers/Data Recovery, Hardware & Software Installation, Virus & Spyware Removal & Protection, New PC Setup & Training

Call Derrick on 01279 816418 ~ 07926 289749
Email: Info@tcsstansted.co.uk

A Winter's Tale

Drawn by the promise of snowdrops, cyclamen, aconites and hellebores, the gardening group determined to say goodbye to Winter and enjoy Spring at the gardens of Benington Lordship near Stevenage. Arriving expectantly, they were not disappointed by the immaculately manicured borders, banks of snowdrops and a delightful parterre in front of the striking Georgian house. Alas, Winter laid on cold sleety rain which bullied and buffeted the doughty party. The group withdrew to the café's warm and friendly wood burning stove to partake of some bad-weather-enhanced-hot tea. Despite Winter's caprices, they swore to return to do justice to a very beautiful place.

Appreciating the wilder landscape of Wales through the illuminating and insightful lines of Owen Sheers was the great pleasure of the Poetry group in a recent meeting. Following some excellent preparation by one member, the group animatedly read and animatedly discussed the ways Sheers describes profound and thought-provoking elements of the human condition through the Welsh landscape. Here he uses a sight we have all seen many a time, but gives voice to the utter cheerfulness of birds in Spring in his poem Calendar,

'Swallows crotchet and minim the telephone wires,
sing volts down the line.'

(illustration by Julia Cook)



Forthcoming Poetry sessions include: The life and work of John Donne, Poems related to new technology, The life and work of e. e. cummings, and poems about water - all of which are sure to challenge and gratify!

Stansted u3a has such a wide range of classes available, it is well worth checking out the website where you can find information about all of them. You will be warmly welcomed to sample any of the classes to find out what might suit you. Please contact via www.u3asites.org.uk/stansted or by 'phone ☎ 07847 385541.

ETC Quiz – 12 April 2025, 7.30 for 8pm at the Bowls Club

Format: Trevor asks the questions; we are supposed to answer them correctly. Good night out in fab company. We provide you with a ploughman's supper, raffle and there is a licensed bar. eight brains per table, £9 per person. To book in your team, please email mail@elsenhamtennisclub.co.uk and we will confirm your table.



tdcelectrical

covering all aspects of
domestic electrical installations

contact us for a free estimate

07960 941138

contact@tdcelectrical.com

www.tdcelectrical.com

S. PERRY CHAPEL END NURSERY

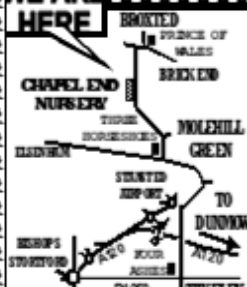
HANGING BASKET & TUB PLANTS
VEGETABLE PLANTS HERBS & BEDDING
SEED POTATOES ONION SETS & SHAL-
LOTS

MULTIPURPOSE COMPOST
70 Litre Bag
£9 each 3 for £23.75

HORTICULTURAL GRIT
COLOURED GRAVELS
PEBBLES COBBLES

**WATER SOF-
TENER SALT 25kg**
£14 each £62.50 for 5

**WE ARE
HERE**



COUNTRY VALUE SEEDS
Most 99p per PACKET
Mr Fothergills Seeds
Buy 5 Packs get Cheapest Free

OPEN 9 am to 5 pm
MONDAY TO SATURDAY (CLOSED SUNDAYS)
MOLEHILL GREEN ROAD
BROXTED DUNMOW ESSEX CM6 2BW
01279 850771

www.chapelendnurserysperry.co.uk

VEGETABLE PLANTS
BASKET & TUB PLANTS
ALPINES
HERBACEOUS
HERBS
ROSES
SHRUBS
POND PLANTS
AQUATIC COMPOST
GODWIN COMPOST
WILD BIRD FOOD
SUNDRIES

ELSENHAM COMMUNITY CHOIR

By Elaine Terry ☎ 07962 586825

✉ elaine.terry2011@btinternet.com



Would you like to make new friends? Well, singing in a group (such as a choir) can help forge social bonds and fast!

Do you worry about getting stale? Well, singing not only exercises the brain, it also helps improve posture, muscle tension and breathing.

Singing, whether alone or in a group, has shown to improve our sense of well being and happiness and learning new songs is cognitively stimulating and can help the memory, so it's a win, win!

So why not give the Elsenham Community Choir a go? You will make new friends, feel uplifted with a sense of achievement, and have some fun too. Oh, and we also always have chocolates!

So hey, why not try something new? Come and join us the first and third Tuesday of every month at 7.00pm until 8.30pm in Elsenham Village Hall (attached to the school).

There are no auditions at our choir, all you have to do is just turn up and sing.

There is always a warm welcome on your arrival, whether with friends or on your own, everyone has a place in our Choir.

FLORAL WORKSHOPS

By Victoria Farrall ☎ 07887 766247

✉ berriesproduce@gmail.com

This month the Memorial Hall has Berries produce back again hosting three different Easter themed floral workshops following the busy Christmas wreath workshop back in December.

All will be held on Sunday April 6 at 10am, 12pm and 3pm and have something for children and adults.

See our Facebook page @berriesproduce for details or call Victoria on ☎ 07887 766247.

D BONNEY & SONS MANUDEN MOTOR VEHICLE ENGINEERS

MOT TESTING

ALL MAKES OF VEHICLES SERVICED INCLUDING FOUR WHEEL
DRIVES

TRW BRAKE CENTRE

DIAGNOSTIC AND FAULT FINDING

WELDING AND CHASSIS REPAIRS

SELECTION OF USED CARS

CALOR GAS STOCKIST

WE HELP YOU THE MOTORIST WITH A CHEAPER LABOUR RATE

GUARANTEED WORKMANSHIP

FREE COLLECTION AND DELIVERY IN LOCAL AREA

PLEASE RING: MALC, NEIL OR CRAIG

☎ 01279 813315 OR ☎ 01279 815946

Mat Duxbury **PAINTING**

Professional Interior and Exterior Painting Specialist

References available on request

20 Years' experience

Fully Insured

NVQ Qualified and Health and Safety Certified

Local, reliable and friendly service guaranteed

For a free estimate please contact Mat on ☎ 07810 250426 or
email ✉ mat@duxburypainting.co.uk

ELSENHAM



THE AUBREY BUXTON NATURE RESERVE

By John Welham, Warden

✉ communications@essexwt.org.uk



As I was working in the reserve on the 4th March, I came across a frog that was making its way from the wood to the pond. The frogs and toads are on the move, coming from their winter resting places under logs and deep in the leaf litter towards the ponds where they will breed and start the next generation.

The arrival of frogspawn is one of “spring’s vital signs” that are recorded every year in a large citizen science project run by The Woodland Trust. They also record the dates of flowering blackthorn and singing song thrush. They use the data to understand how wildlife is coping with shifting seasons, warmer temperatures and unpredictable weather patterns.

Spring starts in the southwest of Britain and works its way up the country arriving in Scotland several weeks later, but it is trending earlier. Last year the first frogspawn was recorded on the Isles of Scilly on 21st December followed by recordings in Cornwall in early January!

Now is an excellent time to get outside and do some bird watching. The birds are very active establishing territories and finding nest sites. Before the trees are in full leaf you have the best chance of good views and hopefully you can observe the birds singing which really helps to build your knowledge of bird song.

EROWOS

✉ erowos@btopenworld.com

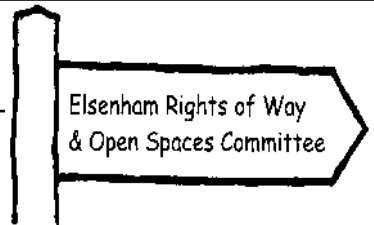
Please join us on our next village ramble -
on Good Friday 18th April 2025.

This is a long-standing village tradition and is a good chance to catch up with friends and acquaintances during a relaxed ramble on local footpaths. A great way to discover safe local walks and meet new people if you are new to the area.

Meet at 2.30pm at The Playing Field Top Car Park (dogs outside the gate please).

Everyone is welcome. Bring the children and dogs (dogs on leads please). Unfortunately the paths are probably too difficult for prams or wheelchairs.

Can't wait till our next organised walk? Plenty of Walks around Elsenham available here: www.e-voice.org.uk/erowos/ or email ✉ erowos@btopenworld.com



CHIROPODIST & PODIATRIST

Bishop's Stortford

- Orthotics
- Diabetic Foot Care
- Saturday Clinics
- Routine Treatment

R. Handford & Colleagues
H.C. P.C Registered

Bishop's Stortford - 16 Hockerill Street

01279 652249

www.feet.org.uk

Binwash
We clean
your
wheelie
bins!

Commercial & Domestic



Low cost & highly efficient service!

Professional machinery

4 weekly schedule or one-off clean

High pressure wash and dried

Disinfected and deodorised

www.binwash-uk.com

01799 529899

enquiries@binwash-uk.com



Street Dance
Pop Singing
Acting

**FREE
Trial
Offer**



New classes in
Elsenham

For more details:

Tel: 01376 331543

Email: admin@rascals-uk.com

Web: www.rascals-uk.com

Fun classes
inspiring Confidence,
Character & Creativity
for children aged 3-12yrs



**DECORATING SERVICES
ALL ASPECTS OF DIY**

NO JOB TOO SMALL

For a friendly reliable service
Just Ask.....

GARY KING

Home : 01279 850001

Mobile : 07951 452602

g.king962@btinternet.com



Late 19th-century Ordnance Survey maps record the location of numerous ponds in farmland across lowland England, but since then farming practices have changed and many have disappeared.

Well-maintained ponds are hot spots for biodiversity, supporting special plants and animals. Responding to concerns about the loss of such habitats, researchers at the Pond Restoration Research Group at University College London joined forces with others to investigate the potential for restoring such lost ponds and produced advice about the best ways to create new ones.

Following on from this, Essex Wildlife Trust identified 17,200 Essex farmland ponds on these old maps but noted that 10,400 had since disappeared. A few have been restored and the team is working with the Farming & Wildlife Advisory Group to secure funding to help more farmers reinstate their lost ponds

📄 www.fwageast.org.uk/ponds

However, pond restoration can be challenging - as evidenced by the difficulties faced during the project to resolve problems with Doctor's Pond in Great Dunmow. In recent years it has been polluted by toxic blue green algal growth.

Ambitious and costly plans were drawn up to desilt the pond which necessitated the safe removal of fish so they could be returned in due course. Work commenced last October with the installation of safety fencing and the draining of water so that a digger could be used to help remove over 1,900 tons of contaminated silt. Heavy rains made the silt very slippery, and the digger became stranded in January. By the end of February all the silt had been removed.

Future plans include landscaping of the surrounding area and replanting with suitable vegetation once the pond is refilled. It is anticipated that in the coming months this attractive pond will, once again, provide a great habitat for ducks, fish, and dragonflies.



**Doctor's Pond, Great Dunmow,
February 2025**

The Hundred Parishes is 450 square miles of northwest Essex, northeast Hertfordshire and southern Cambridgeshire that is largely unspoilt and is richly endowed with many fine examples of agricultural and built heritage. The area has shared a common history which shaped and preserved its distinctive landscape of small and medium-sized farms linked by winding lanes and ancient rights of way to hamlets, villages and then to small market towns. For more information visit www.hundredparishes.org.uk.

Essex Autospray

Your local Collision Repair Centre - Est 1982

- Free Courtesy Cars
- Free Estimates
- Low Bake Ovens
- Blackhawk Alignment



Tel: 01279 816296 E: info@essexautospray.co.uk

www.essexautospray.com

M11 Business Link, Parsonage Lane,

MASKALLS TREE SURGERY

Small family business

**Big expertise
in trees**

Call George

M: 07982 601 570 | T: 01279 819 127

email: george@maskalls.co.uk

www.maskalls.co.uk



**All types of tree care & hedge cutting undertaken.
Call for a free estimate.**



STANSTED HALL & ELSENHAM CRICKET CLUB

By David Brown ☎ 831011 ✉ david1.r.brown@gmail.com



After a long grey cold winter, the bright light of summer sun is upon us and the good news is that the cricket season is about to begin. If you live locally, you are fortunate in that you have some very nice cricket clubs on your doorstep that have a lot to offer.

Down at 'The Hall' we offer plenty for all the family. Cricket begins at the age of 5 with our 'All Stars' programme which is aimed at the 5-to-8-year age group. Our Friday evening sessions start in May. We will also be running teams in the U10 to U16 age groups. Our U14 team will be playing in the Sir Alistair Cook T20 competition and our U16 will be playing in the Trevor Bailey U16 Shield. The competitions are organised by Essex County Cricket Club. Our indoor nets practice for all age groups has already begun.

The senior section runs 2 league teams on Saturdays and friendly team on Sundays and we welcome any new members.

England international cricketers – well the less said the better!!! Hopefully things will improve during this summer.

We are a well organised community club catering for all. If you are interested in joining, please contact as above.

HENHAM RUNNING GROUP

☎ 07496 412178 (Neil Laird) ☎ 07749 858353 (June Brennan)

🌐 www.henham10k.co.uk

Henham Village 3k and 10k run - Hooray it is back! 22nd June 2025

Come and join the fun. You can walk, jog, or run. It is a beautiful, mainly off-road course, showing off the lovely countryside around our village. All runners receive a medal on completion of the run. Enter now and beat the rush. It is worth it just to see our great new web page : www.henham10k.co.uk. If running isn't your thing, we need cake bakers, marshalls and people to cheer, so put it in your diary now. All proceeds to Henham and Ugly school.

Monday evening runs - Almost there!

The Monday evening runs start again the day after the clocks change. The first run is on Monday 31st March. All welcome, you run at your own risk. This is a group of friends running together. Children and dogs welcome, both must be closely supervised by a responsible adult.

The runs will start at about 5k and build up to 10k by the 22nd of June. Yellow fish will clearly mark the route. Come and join us. More info from June ☎ 07749 858353.



Pike's Plumbing & Heating

Whether you're looking for a plumber or heating engineer, Pike's Plumbing & Heating can help.

If it's an emergency, simple problem or you're just thinking about a new boiler or bathroom give me a call – I'm available when you need me 24/7. Now's a good time to think about servicing your boiler too and make sure you're not left out in the cold! No Call-Out Charges & Free Quotations

Tel: 07889 140035

Craig Pike

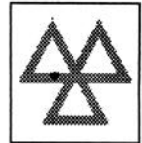
Email: info@pikesph.co.uk

Web: www.pikesph.co.uk



GARRETT'S GARAGE SERVICES

42 Golds Business Park, Elsenham
Bishop's Stortford, Herts CM22 6JX



- Mechanical Repairs
 - Servicing
 - Tyres
 - Engine Tuning
 - Computer Diagnosis
 - Windscreen Repairs
 - M.O.T.'s - Catalyst & Diesel Tested
 - E.H.D.C. - Authorised Hackney Carriage Testers
 - Batteries
 - Exhausts
- MODERN WELL MAINTAINED WORKSHOP*
- ALL MAKES OF VEHICLE*
- *FREE COLLECTION AND*
*DELIVERY SERVICE**

TEL: 01279 647777 FAX 01279 817622

ELSENHAM BOWLS AND SOCIAL CLUB

By David Thomas



As the weather improves all outdoor bowlers are looking forward to the start of the new bowls season. The green has been prepared and the club house cleaned and decorated. All this work is done by volunteers so we would like to reiterate our thanks to everyone involved in getting ready for the upcoming season.

The 2025 green opening is on Friday 25 April at 6pm. This is an opportunity for a first game of the new season. All are welcome to join us for our opening evening. If you are a seasoned player or are just interested in finding out more about the game, please join us on the 25th.

Saturday 26 April is the club's first competition of the new season. The 2 Wood Event is a gentle introduction to the new season. All members are welcome to join the event, with sign up open now. Registration is at 10.00am on the day followed by the qualifying rounds before the final is played in the late afternoon. It will be interesting to see who is the "Clear Winner Trophy" champion this year with our new players challenging our more experienced players for the title. Spectators and supporters are also welcome to join us at the club on the day.

Congratulations to our Crib team players and all who are involved in the local league matches over the winter months. Our A team came fifth in the league with our B team in seventh place. The singles crib competition continues with Glynis Davis (Elsenham B) and Trevor Hackett (Elsenham A) progressing to the fourth round of the competition. Interestingly our A and B teams have been drawn against each other in the KO Plate competition, so we have our own special internal derby match coming soon.

The Darts Academy started last month. It was lovely to see the hall packed with young people keen to take up a new sport or polish their skills. There were some very young hopefuls to aspiring teenagers who were all being expertly encouraged by a team of coaches.

Our next music night is on May 3 with Piccadilly Swing who will be playing a variety of Swing and Jazz hits of the 60s through to current chart toppers. Tickets are available now at £7.50 for members and £12.50 for non-members. Ticket availability is limited so please call Trevor on 07445 437437 to secure your ticket for the event.

Other club activities for April include our popular Bingo nights on 5th and 19th, 7.30 for 8.00pm. Our Shortmat final is on Monday 14 at 2pm and our regular darts session is on Thursday evenings. The bar is open at all these times as well as on a Friday evening for members and their visitors.

For full details about Elsenham Bowls Club including membership and our opening times please see our website www.elsenhambc.org.uk



T.J. Patmore
Building Services

Extensions – Loft Conversions
 Roof work – Carpentry – Roof Tiling
 First and second fix carpentry
 Kitchen fitting
 Built in wardrobes
 Decorating interior and exterior
 Floor and wall tiling
 Fencing – Decking – Patios
 Supply and fix u.p.v.c. windows
 House maintenance

*Call Trevor for friendly help, advice
and FREE estimates*

mob 07932 666224



S.E.P



**TREE CARE & GARDEN
MAINTENANCE**

Tree Topping & Felling
 Pruning & Pollarding
 Hedges cut, Trimmed & Removed
 All waste Chipped & Removed
 Garden, Garage & Site Clearance
 Gravel Driveways & Paths
 Fencing
 Turf Supplied & Laid
 Jet Washing Paths & Driveways
 Local Tradesman
 20 years experience
 For a free estimate Phone
07903 621657
08000 588057
 14 Day Cooling off Period



YOUNG'S

WINDOW CLEANING SERVICE

We specialise in residential properties offering a quality
and regular service for exterior and interior cleans
Serving the Elsenham community for the last 10 years

Call or text Malcolm for a FREE quote
07817 481901

ELSENHAM TENNIS CLUB

By Petra Studholme ☎ 814667



Our new season will start in April 2025 with subscriptions unchanged. Various packages are available to suit everyone. And you can always try before you subscribe. Book a lesson with Steve, come to cardio or if you feel up for it, contact us to attend a club night.

Adult: £80
Couple: £145
Family: £155
Senior: £50
Student: £45
Under 18s: £20
Non-playing: £10

We have two all-weather courts, floodlights so you can play before or after work. We are situated right in the heart of the village, on the playing field. You will get your own key to access the courts, can book online at your convenience and participate in our club events such as club nights, weekend, or morning play sessions.

Essex Small Club League

The men's match away to Stansted resulted in an excellent, well deserved 9:7 win for Elsenham. Jon partnering Henry and Lewis partnering Gavin fought long and hard and came out on top! Well done guys.

Coaching – individual and group sessions

We have individual and group coaching sessions, cardio run by our dedicated and experienced coach Steve Smith. Get in touch with him via email: stevesmith865@hotmail.com or call/text 07790 561 817. Please note that Cardio is open to non-members. Cardio is a great way to get or stay fit. Our coach's choice of music is sometimes questionable, but everyone is definitely having fun and is getting a great workout.

Hire our courts – open to non-members

Hire our courts to play with friends and family - £3 per adult, and 50p for under 18s. You can email us for availability, but please, if possible, give us 24hrs notice as we need to arrange to open the courts

Tennis Club Weekly Activities

Tuesday evening – 6.30pm cardio tennis
(non members welcome)

Tuesday evening – 7.30pm club night

Wednesday morning – 10am causal play

Thursday evening – 6.30pm cardio tennis

(non members welcome)

Thursday evening – 7.30pm team practice
sessions

Friday morning – 10am casual play

Sunday afternoon – 2pm casual play



The Hair Loss Clinic
 North Hall Road, Ugley
 07957 166436
www.hairlosslaserclinic.co.uk

The Hair Loss Clinic is a company set up to provide information, advice, support and above all solutions for people experiencing hair loss. Not only do we provide realistic and workable solutions to those suffering from hair loss but we are also specialists in after and on-going care for hair loss, giving you the very best support. We can help you through your journey from hair loss through to aftercare if your hair grows back. We provide a personalised service and will recommend the course of treatment or other solutions most appropriate to you.

We provide information, support and advice about your hair loss and identify the factors you will need to consider when choosing which solution is suitable for you.

We provide guidance on cutting and styling of your wig or integration piece and advice on what to do when your hair starts growing back.

Monthly Trichologist clinics are held with Eva Proudman, MIT IAT. Eva is widely known both in the UK and Internationally for her work with hair loss. She has appeared on TV many times and supports many major hair companies with her research into hair loss. All consultations are private and last for between 45 minutes and 1 hour; during this time all relevant areas of health, diet, lifestyle, family history, hair care regime will be discussed along with an in depth examination, including the use of a specialist scalp camera to arrive at a diagnosis and treatment plan.

Whatever the cause of your hair loss or the extent of the hair loss, we are here to help you.

CLEAR OVENS

Oven Cleaning Specialists

01279 89 89 96



Make your oven look showroom fresh with a professional clean from **Clear Ovens**. Our fully insured expert technicians will make it shine like new.



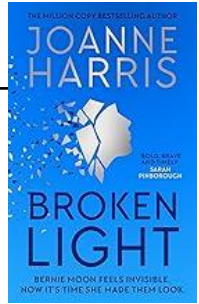
Covering Sawbridgeworth, Harlow Epping, Great Dunmow, Braintree, Stansted, Bishop's Stortford and surrounding areas.

01279 89 89 96 or visit us online at www.clearovens.co.uk

The difference is clear

BROKEN LIGHT BY JOANNE HARRIS

Reviewed by Marion Giles for Elsenham Book Group



“Bernie Moon has given her life to other people: her husband, her son, her friends (who are these days, mostly online). At nineteen she was full of dreams and ambitions; now almost fifty, and going through the menopause, she's fading, fast. Heartbroken and hormonal, she often feels like she's losing her mind. When a young woman is murdered in a local park, it sparks a series of childhood memories in Bernie and with them, a talent that has lain dormant most of her adult life.

She promised herself she'd never think of it again. When she was a teenager, it almost destroyed her. But now she's older, could it be the power she's been missing? Could it be the chance to, finally, make them look?” So says the blurb on the back of the book.

Chilling, enchanting, and thought-provoking . *Ian Rankin*

This was the choice of the book group this month.

The Amazon AI summarises: Customers praise the writing style as descriptive and not wordy. They find the book thought-provoking and relevant to current thinking. Many appreciate the empowerment of women through menopause and the story's insights into menopause. The empathy, wry insight, humour, and humanity are also highlighted. While some readers found the mystery content strange and unusual, others felt the pacing was repetitive.

Bernie's first experience of magic was at a magic show as a child. The magician always takes centre stage, however, it is the female assistant who connects with Bernie - 'makes her look.' Bernie and her friend Katie develop an ability to 'see' into each other's feelings in their minds—Bernie refers to it as exploring 'houses.' At the start of her menstruation, Bernie realises the ability has changed into an ability to 'flip' what she sees in people's 'houses' using mirrors. A couple of incidents at school cause Bernie to suppress it. Bernie and Katie drift; Bernie has an unfulfilling relationship with her husband and worries about her son plus she is a constant disappointment to her mother. Bernie can't seem to communicate and is feeling the invisibility that many middle-aged women experience.

As menopause begins, she 'feels' the emotions of a young woman who is being murdered. When she finds it is true, it awakens those long suppressed abilities via menopause flashes. Following the murder, the story explores misogyny depicted on social media and actions of some men. This aspect of the world today provokes strong feelings including anger and when Bernie meets Iris, her abilities are exploited with both positive and negative consequences. However, it is at the school reunion that suppressed, rage, invisibility, frustration, love, empathy and regret explodes in a shattering of mirrors and reflections.



Now it is getting warmer, and we are getting excited about summer, why not celebrate by visiting the Farmers Market on Saturday April 26 12.30-2.30pm?

We have a great range of products and we try hard to ensure that we only sell consumable produce or allied products by small independent sellers. Everything is as local as possible. Our sellers can vary from month to month and their products can also be seasonal, but the quality is always tip top with something for everyone. So, if you haven't been for a while, do pop by. You will not be disappointed.

If you are not sure you want anything, come for a coffee and cake and a browse. It's a win win! Most of the produce is homemade, so not only do you get these fabulous treats once a month, you are also supporting local businesses as well as coming together with our fabulous community, you might even make a new friend!

The markets for the rest of the year are:

May 31

June 28

July 27

August 30

September 27

October 25

November 29 (all things festive & more!)

We look forward to seeing you there. No charge for entry; just enjoy and immerse yourself in all the gorgeous produce!

Elsenham Farmers Market Team

COOKERY CORNER

By Sue Johnson ☎ 812704



Serve this delicious chicken and chorizo ragu over rice or pasta as an easy midweek dinner for the family. Eat any leftovers for lunch the next day or freeze it for future use.

CHICKEN AND CHORIZO RAGU (serves 4)

120g cooking chorizo, chopped
1 red onion
2 garlic cloves, crushed
1 teaspoon hot smoked paprika
80g sun dried tomatoes, chopped
600g skinless and boneless chicken thighs
400g can chopped tomatoes
100ml chicken stock
1 lemon, juiced
Jacket potatoes, chopped parsley and soured cream to serve (optional)

Fry the chorizo over a medium heat in a large saucepan or flameproof casserole dish for 5 minutes or until it releases its oil and starts to char at the edges. Add the onion and fry for 5 minutes more or until soft.

Tip in the garlic and cook for 2 minutes before stirring in the paprika and sun dried tomatoes. Add the chicken thighs and fry for 2 minutes each side until they are well coated in the spices and beginning to brown.

Pour in the tomatoes and stock and turn the heat down. Cover and cook for 40 minutes until the chicken is falling apart and the sauce is thick. Stir through the lemon juice.

Chef's recommendations

Serve the ragu with hot jacket potatoes, parsley sprinkled over and a dollop of soured cream on top. Left-over sun dried tomatoes can be used up by adding to your next pizza topping.

Memorial Hall Bookings

After looking after the Memorial Hall Bookings so brilliantly for 14 years, Cheryl Rae has decided to hand over to Sue Waite. Bookings for the Memorial Hall can now be made online via the ECA website:

<https://elsenhcommunityassociation.org.uk/hiring-elsenh-memorial-hall/>

Editorial Information

Articles

The **last day** for editors to receive articles, advertising and letters, which must contain the author's name and address (which may be withheld), is the 8th of each month.

Articles should ideally consist of a half page of A5 or a full page of A5. Articles over these sizes or letters containing more than 500 words may be edited depending on space.

Copy submitted after the 8th may not be accepted but will, if deemed appropriate, be held over to the next month. We are happy to receive hand written articles which ideally should reach us earlier than the 8th to allow for scanning etc.

Dates for the Diary must include date, event, venue and time.

Please submit all articles, adverts, letters and queries to the editorial team at:
elsenhamsnews@hotmail.co.uk

General Notes

Whilst every effort is made to ensure that information is correct, the editorial team cannot be held responsible for any inconvenience caused through errors or omissions.

The views expressed within this magazine are not necessarily the views of the editorial team or Elsenham Community Association (ECA).

The editors and the ECA can accept no responsibility for the goods or services advertised in the magazine. Advertisements are included in good faith. The editors reserve the right to allow replies to letters/articles to be made in the same edition when appropriate.

The editors' decision is final.

Wanted/For Sale items: individuals may submit short details of items wanted or for sale etc at no charge. These will be included in the next available issue of the magazine subject to space and acceptance by the editors.

Subscriptions

Elsenham News is available by email (on a pdf) at no charge, or through the post at a cost of £13 per annum. Contact **elsenhamsnews@hotmail.co.uk**

Advertising

The costs are as follows:

	Single Insertion	Annual Cost (11 issues)
Half Page	£20.00	£190.00
Quarter Page	£10.00	£100.00
Inside Page	£50.00	n/a
Back Page	£75.00	n/a

Village organisations attract reduced rates, £5 for ¼ page. Half and full-page adverts attract full rates.

To place an advertisement:

If you have any queries, please email us. Please send your advert as Word or Publisher via email to:
elsenhamsnews@hotmail.co.uk

Advertising Editor: TBA

Business Advertising

Cheques should be made payable to "**Elsenham Community Association**".

Editorial Team:
Gary Williams
Emma Bailey
Marion Giles
Patricia Davis
Anne White
Nyaradzo Chabata
Angie Wenlock
David Newland

Previous issues of Elsenham News are available on the ECA Website

www.ElsenhamCommunityAssociation.org.uk

UPCOMING EVENTS

Re-opening of The Crown April 17 and 18
 Music Night at the Bowls Club - Piccadilly Swing May 3
 Flower Show Society Plant Sale May 17

VILLAGE CONTACTS

Airport Roadside Parking		0800 731 2385
Beavers	1sthenhamandelsenham@gmail.com	
Bowls Club	Therese Clear	07759 158859
Brownies	elsenhambrownies@gmail.com	
Church Office (Old Frank's, High St, Elsenham)	Anna Hicks	814285
County Councillor (Stansted)	Ray Gooding	813103
Cricket Club	David Brown	831011
Cub Scouts	1sthenhamandelsenham@gmail.com	
ECA (Chairman)	Allan Hathaway	813385
ECA (Secretary)	Moyra Jackson	647351
ECA Website	www.ElsenhamCommunityAssociation.org.uk	
Elsenham Eagles	elsenham.action@btinternet.com	
Elsenham Farmers Market	elsenhamfarmersmarket@gmail.com	
Elsenham Surgery	www.elsenhamsurgery.nhs.uk	814730
Elsenham C of E Primary School	Linda Todd Headteacher	813198
Elsenham Church PCC Secretary	David Hill	812397
Elsenham Fete	ElsenhamSummerFete@gmail.com	
Elsenham Rights of Way website	www.e-voice.org.uk/erowos/	
Friends of Elsenham School (FOES)	Louise Judd	foespta@hotmail.com
Henham & District Garden Society	Moyra Jackson	647351
History Society	Mike Rea evhs12@hotmail.co.uk	813634
Member of Parliament	Kemi Badenoch	0207 219 5214
Memorial Hall Bookings	Cheryl Rae	817834
Neighbourhood Watch Co-ordinator	Frances Lambert	07771 728332
	franceslambertnhw@btinternet.com	
Parish Clerk - Louise Johnson	louise.epc@gmail.com	07456 791727
Elsenham Parish Council Website	www.elsenham-pc.gov.uk	
Police		101
Post Office		812175
Rainbows	elsenhamrainbows@gmail.com	
Scouts	1sthenhamandelsenham@gmail.com	
St Mary's Fabric Fund	Elizabeth Barker	813543
Tennis Club	Petra Studholme	814667
Tots & Toddlers	Dawn Temple	07944 841358
Uttlesford District Councillors (for Elsenham & Henham)	Petrina Lees	07713 074656
	Bianca Donald	07941 880279
Village Hall Bookings	elsenhamvillagehall@gmail.com	
Womens Institute Secretary	Gill Hathaway	813385
Youth Football Club (Chairman)	Ricky Lambourne	info@elsenhamyfc.co.uk

If you would like your village organisation contact to appear regularly in the magazine, please contact one of the editors, see opposite for details.

EASTER ACTIVITES

19TH, 20TH & 21ST APRIL

EASTER FUN ALL WEEKEND

on the Adventure Golf Course | £8-10 PP

EASTER MONDAY EGG HUNT

No booking required | 11-3PM £5.00 PP

Golf World Stansted, Hall Road, Nr Stansted Airport,
Essex, CM22 6FL
01279 812 865 | bar@golfworldstansted.co.uk

