

Elsenham News



**CHILDREN'S EASTER EGG HUNT
STARTS SUNDAY 4 APRIL
SEE INSIDE...**

elsenhamsnews@hotmail.co.uk

April 2021

75p where sold

Please note that following government advice regarding Covid-19, all regular activities that would normally take place in the Memorial Hall or the Village Hall have been cancelled until further notice.

The following groups or activities are suspended until further notice:

Brownies
Community Choir
Life Drawing
Rainbows
Tots & Toddlers
Yoga

Guides
Line Dance
Shape to the Beat
Village Café, tea, coffee and lunch
Zumba

Some groups are meeting online or in a limited way

Beavers and cubs
Church services, Little Fishes and special events (please see page 27)
Elsenham Tennis Club activities (please see page 45)
Elsenham & Stansted Hall Cricket Club training & fixtures (see website)
Kick Boxing (on Playing Field)
WI (online, please see page 21)

Parish Council meetings are being held by Zoom. The next meeting is on **Monday 12 April**. Contact Louise Johnson for information by email on [✉](mailto:louise.epc@gmail.com) louise.epc@gmail.com



Mobile library visits to Elsenham have resumed. Visitors are restricted in numbers so you may have to queue. Face coverings must be worn.

Place: Glebe End. Time: 11.50am to 12.20pm
Day: Thursday
Dates: 1 and 22 April

THE NEWS REPORT

From The Editors



Happy Easter everyone, let's hope we get some sunshine.

We are pleased to be producing a printed magazine again this month. Please support the local businesses that advertise with us, without their contribution we would not be able to produce the magazine.

We also get great support from our regular contributors and one of them, Heather Salvidge who writes the Natural Outlook article every month, is celebrating a notable milestone this month. The Natural Outlook piece on p39 is Heather's 200th article. An incredible contribution and one that has educated and entertained villagers for many years. Thank you, Heather, we are all looking forward to reading the next 200 articles.

The next big village event will be the Village Fete, on Saturday, 26 June. As ever there will be fun for all the family – and don't we need that? There's opportunities for local organisations to get involved, as well as individuals. See p33 for details and do get in touch with the organisers if you have any suggestions.

Always nice to hear good news from local businesses and this month we heard about Cammas Hall winning an award, see p47. Many villagers will have visited them over the years to pick fruit and veg or take the kids for holiday activities.

Exciting news from Daisy May's Farm, which is located on the edge of the village, near the church. They will be open again from 12 April, hooray! Details of how to organise your visit on p15 and if you can't visit them but would like to support the animals, you can find out how to do that too.

The rest of the magazine is jam-packed too. There's the Annual Parish Meeting, see p13. An update on the great work of Uttlesford Food Bank on p5, and an invitation to support them with contributions too. If the sun does come out, sorry, WHEN the sun does come out, you can be ready for it, as Cookery Corner has gone tropical with the recipe, see p49.

Happy reading, see you next month,
The Editors

Regular features

100 Parishes	23	History Society	31
Book review	43	Natural Outlook	39
Church letter	26	Parish Council	7
Cookery Corner	49	Ray's Reflections	41
Development Developments	17	Sports clubs	45/47
District Council report	9	Women's Institute	21



Cammashall
Fruit Farm * Tea Barn * Farm Shop

OPEN
Thursday to Sunday

Farm Shop now open

Thursday to Sunday 9am to 3pm

- Bread • Fresh Fruit & Veg • Eggs • Fresh Meat • Milk • Cheese & Dairy**
- Jars & Sauces • Flour & Yeast • Cereal • Pasta & Rice
 - Ice Cream & Confectionery • Frozen Food • Cleaning Products
 - Plants • Greetings Cards • Gifts • Toys • Firewood
 - Local wines, spirits, beers & ciders

Face coverings must be worn in the farm shop and please adhere to social distancing guidelines.

Please visit our website and social media pages for further details on the above and all our latest updates
cammashall.co.uk



FIAT 500's For Sale

Top Quality Pre-Owned Fiat 500s

Only 3 miles
North of
Bishops Stortford
in Manuden
CM23 1DQ



www.tq500.co.uk 07785990821



Customer reviews on Autotrader

UTTLESFORD FOOD BANK

By Petrina Lees



Our foodbank distributes food to those in need, providing a service that, I am sad to say, is a necessity in this modern age, despite us being a wealthy nation. There are many reasons why people find themselves in need, such as rising living costs, unexpected expense, changes to income and/or benefits, job losses, illness, disability, family breakdown, among others - this could be any of us!

The Trussell Trust has begun a campaign to stop food poverty, and I have recently joined our local strategy group. Those of us within the foodbank group, are campaigning for us not to be needed. Whilst we work for long-term change, our foodbank provides emergency food and compassionate, dignified support to people locked in crisis, so please continue to support your local foodbank. Elsenham has a reputation of responding to a rallying call with generosity and kindness. Our village contributions are mentioned at regional meetings.

A typical food parcel provides cereal, soup, pasta, rice, tinned foods, pasta sauce, pies, biscuits, UHT milk, fruit juice, tea/coffee, and condiments. Dog and cat food may also be provided. Where we can, we also try to supply non-food items, such as toiletries – deodorant, toilet paper, shower gel, shaving gel, shampoo, soap, toothbrushes, toothpaste, hand wipes etc. Household items such as washing powder, tampons, and baby supplies are also welcomed.

For more Information on Uttlesford Foodbank and information on our fight hunger campaign - please visit www.uttlesford.foodbank.org.uk.

Thank you for your continued support, I am so grateful to live where folk decide to make a difference. The campaign is a five year campaign, we know it's going to take a while!

For an insight into food poverty, Jack Monroe wrote an excellent piece, though in the depths of despair called Hunger Hurts. In that post, one can feel the sadness in her voice as she writes about how it feels to hit rock bottom. <https://www.theguardian.com/society/2013/jul/23/jack-monroe-face-modern-poverty>

All donations are gratefully received -please drop off at Orwell House, Station Rd.

Celtic roots that remain with us today:

1. The date of Easter follows pagan (earth-loving) traditions as it is determined from the lunar calendar. Easter will be on the first Sunday after the first full moon following the spring equinox (21 March), which is why it changes annually.
2. Egg symbols come from the Celtic maiden depicted with a willow basket of eggs, representing creation and new birth.
3. Rabbits were animals associated with the Goddess Oestre.
4. The Goddess Oestre provides the basis for words related to female fertility and reproduction as in oestrus (fertility cycle) and oestrogen (fertility hormone).



Bear & Eden

COFFEE SHOP
EAT. RELAX. PLAY

**We're Open
For Takeaway!**

WE ARE A FAMILY-FRIENDLY COFFEE SHOP,
BASED IN THE HEART OF STANSTED MOUNTFITCHET VILLAGE
SERVING THE BEST LOCALLY SOURCED COFFEE FOR MILES

- TEA, COFFEE & SPECIALITY HOT CHOCOLATES
- FRESH ICE CREAM MILKSHAKES
 - ORGANIC SMOOTHIES
- CORNISH PASTIES, SAUSAGE & VEGAN ROLLS
- HOMEMADE CAKES & AFTERNOON TEAS
 - HEALTHY & VARIED BREAKFAST & LUNCH MENU

OPENING HOURS:
9.30 AM - 3.30 PM MON TO SAT
10 AM - 4 PM SUN



31 LOWER STREET, BREWERY BARN,
STANSTED MOUNTFITCHET,
ESSEX, CM24 8LN

e: info@bearandeden.com

WWW.BEARANDEDEN.COM



REFILL DELIVERY SERVICE

BATHROOM • KITCHEN • LAUNDRY

HOUSEHOLD PRODUCTS REFILLED AT YOUR DOOR

100ML SAMPLE
BOTTLES AVAILABLE



WE CAN REFILL YOUR OLD BOTTLES!

EMAIL: HELLO@GREENPEARECO.COM

ORDER ONLINE: WWW.GREENPEARECO.COM

N.M.S
Window Cleaning Service

Cobwebs removed, Windows, Frames and sills washed, doors cleaned as required.

**Water fed pole system
Traditional**

07470291463

ELSENHAM PARISH COUNCIL 1 MARCH 2021

By Louise Johnson, Clerk. ✉ louise.epc@gmail.com ☎ 07456 791727



A reminder to all bus users, it is important for those who are seeking an exemption from wearing a mask on the buses, to check that the details they have are acceptable to the bus operator.

The new path in the children's play area has now been completed. The council will now look at other areas in the play area that would benefit from similar paving.

There had been some vandalism in the play area in Isabel Drive. All the three gates in the play area were damaged and the self-closing mechanisms were torn off. The police have been informed and are investigating the issue, some youths have been questioned by the police.

The dog bins on the trim trail in Elsenham Vale are overflowing again. The Management Company, Remus, is responsible for emptying the bins; this is a health hazard. Two councillors who live on Elsenham Vale are going to speak to the company.

Cllr Bentley, Cabinet Member for Essex County Council, has confirmed that the issues with North Hall Road are far more complex and the length of wall requiring remedial work is longer than first anticipated. The project is being commissioned for design in the 2021/22 financial year.

ECC council tax is to be frozen for the coming year, although there will be 1.5% increase in the Social Care precept.

The Parish Council thanked Allan Hathaway for cleaning and reapplying paint onto the Elsenham village sign, and to Mick Burke for removing the sign and reinstalling it, both gave up their own time to help the village.

A Zoom meeting was held with Paul Seabright from North Essex Parking Partnership, and three councillors. The Parking Partnership is going to be looking at the problems with the parking in the village, especially around the school and the shops.

The Flowerbed Committee is looking at ways to make the Memorial Garden more wildlife friendly, without taking over the appearance and meaning of this garden as a central point of the village. Three bird nesting boxes have been put in the trees, plus a hedgehog box on the ground. The Parish Council thanked Allan Hathaway for making and installing the boxes. The Parish Council is also looking at alternative ways to kill the weeds, by excluding geo phosphate and using organic weed suppressors; EPC aims to be completely chemical free by 2023.

The next Parish Council meeting is on 12 April 2020 at 8pm, via Zoom.



Advertise your
business in Elsenham
News

Contact us at

elsenhamnews@hotmail.co.uk

HANDY MAN SERVICES

NEW YEAR LOOK
AROUND THE HOME

All decorating in any colours using Dulux paints.
All new flooring installs any type: light wood, dark wood and oak.
Electrical new lighting LED, fittings, sockets, switches change to chrome/brass.
Alterations to out houses, garages to extra room, dining room, office and many more. Extensions.

Call Dennis. Free Quote
07946 231302



BARLEY GROVE
FINANCIAL SOLUTIONS LIMITED

- * Annual Accounts/Book-keeping
- * Payroll
- * Corporate Tax returns
- * Self-Assessment Tax
- * VAT Returns
- * New Business Set up
- * IR 35 advice
- * Construction Industry Scheme (CIS)
- * Making Tax Digital Advice

A PROFESSIONAL AND TAILORED SERVICE TO MEET YOUR PERSONAL
OR COMPANY NEEDS

LOCAL COMPANY

CONTACT US NOW FOR AN INFORMAL DISCUSSION

Tel : 0330 133 0246

Email: info@barleygrove.co.uk

Website : www.barleygrove.co.uk

DISTRICT COUNCILLORS' REPORT

FEBRUARY 2021

By Cllr Lees and Cllr LeCount

✉ Cllrlecount@uttlesford.gov.uk

✉ Cllrlees@uttlesford.gov.uk

☎ 07836 346717

☎ 816675



District Councillor Report

Council Investments and Finances

As UDC's commercial investment portfolio is growing towards its target total of £300m and two more major investments have recently been finalised, readers may be interested to see a summary of the purchases, and the tenants:

Completed Investments

	60,841,000
Headquarters at Tewkesbury (Moog Controls)	35,000,000
Retail distribution centre Chorley (Waitrose - NW England and Scotland)	55,000,000
Retail distribution centre Gloucester (Amazon)	42,555,000
Skyway House Takeley (Weston Homes)	20,000,000
Stane Retail Park Colchester (Aldi, B&Q)	30,424,000
Vet Hospital Livingston (Mars Veterinary Health Group)	5,925,000
	249,745,000

Future Committed Investments

Chesterford Research Park	13,400,000
---------------------------	------------

Future Options

Investment 2	35,000,000
--------------	------------

Total **298,145,000**

The anonymous one is where the purchase is an option which UDC may take up, or not, and remains commercially confidential.

The details of all investments have been seen and approved by UDC. The Investment Board receives professional expert reports on each investment, and subsequently on the performance of each investment. All the sites purchased have been visited by UDC officers.

Continued on page 11

MASKALLS TREE SURGERY

Small family business

Big expertise in trees

Call George

M: 07982 601 570 | T: 01279 819 127

email: george@maskalls.co.uk

www.maskalls.co.uk



All types of tree care & hedge cutting undertaken.
Call for a free estimate.



TAKELEY IRONING & DRY CLEANING

OPENING TIMES
MONDAY - FRIDAY 8AM - 5PM
SATURDAY 8AM TO 12PM

FREE LOCAL COLLECTION & DELIVERY TO YOUR DOOR

Takeley, Elsenham, Henham, Stansted, Felsted, Hatfield Broadock, Hatfield Heath, Sheering, Dunmow, Sawbridgeworth, Broxton, Spellbrook, Molehill Green, Broxton, Little Canfield.

- ✓ WASHING & IRONING
- ✓ IN HOUSE DRY CLEANING
- ✓ 48 HOUR SERVICE
- ✓ DUVETS
- ✓ CURTAINS
- ✓ ALTERATIONS
- ✓ WEDDING DRESSES

The Centre, Dunmow Road (Behind Londis)
Takeley, Bishops Stortford
Herts, CM22 6SH

Email: takeleyironing@gmail.com
takeleydrycleaning@gmail.com

Tel: 01279 871245

© Maskalls - 2021. All Rights Reserved. 01279 819 127

A full analysis, including photos of the buildings, is in the Commercial Strategy 2021-2025 published in the agenda for full council 23 February 2021. <https://uttlesford.moderngov.co.uk/documents/s22542/Appendix%20B%20-%20Commercial%20Strategy%202021-2025.pdf>

The purchases are all freehold land and the building, not the businesses. Buying land is a lower risk strategy compared to buying businesses, which other councils have done, e.g. Stansted Airport. These investments are balancing-up UDC's portfolio to correct the previous administration's high-risk concentration in one asset, so when the portfolio is complete the Chesterford Research Park element will have reduced from 100% to about 25%. The investments within Uttlesford will be around 31% of the total.

A misconception repeated by (political) critics is to compare the council's income with the size of the investment portfolio. It is not like buying a house, which is a source of expenditure, using your personal income to service the mortgage and costs. In contrast, the council's investments come with a significant income, which covers the capital and interest payments and provides a surplus to support council services. And further, it is the tenants who pay the running costs of the buildings, not UDC. The investments support the council's income and not the other way round. This income is allowing UDC to fund £1m of environmental work, £1m on business covid recovery initiatives, £450k of sports provision, and to cover the costs to the council of the pandemic so far. And most importantly to fill the large inherited future funding gap of £5m a year for the provision of council services. Without this income there would need to be cuts in staffing and in services.

Although the UDC accounts for last year have not been signed off, this is not to do with the financial part of them, which the auditors are happy with, and the accounts are published on the UDC website. A balanced budget for 2021/22 has been approved by full council, following review by the Scrutiny Committee. The package is 150 pages of detail and with the uncertainty over the financial implication of Covid-19, the officers have had a harder preparation job this year.

The key items which residents will be interested in is that the Band D council tax is proposed to rise by £5 a year, and council house rents by 1.7%, which has been agreed by the Tenants' Forum, meaning an average rent of £102.73 a week.

We have spent our Ward Initiative Fund. We have helped to buy a salt bin, and also helped with Daisy May's Farm's food costs, provided laptop support for the local schools and Mental Health provision.

We were delighted that the Planning Committee agreed to refuse the planning application on Mill Rd, Henham,. Of course we will be defending the inevitable appeal.

Happy Easter.

Fancy something to do? Visit Audley End

<https://www.english-heritage.org.uk/visit/places/audley-end-house-and-gardens/prices-and-opening-times/>



LOGS LOGS LOGS

- Well seasoned hard wood
- Transit load / bulk builder bag
- Cut to fire size

Call today ☎ 01279 718555
 Or email ✉ dar13@mail.com

★ ★ ★
Jaime's Gents hairstylist
 @ Rickling Green

- ★ Appointments from 7am Mon-Sat
- ★ FREE easy parking
- ★ Fully qualified & insured



Call: 01799 542424
Text: 07791 058406



D BONNEY & SONS MANUDEN MOTOR VEHICLE ENGINEERS

MOT TESTING

ALL MAKES OF VEHICLES SERVICED INCLUDING FOUR WHEEL DRIVES

TRW BRAKE CENTRE

DIAGNOSTIC AND FAULT FINDING

WELDING AND CHASSIS REPAIRS

SELECTION OF USED CARS

CALOR GAS STOCKIST

WE HELP YOU THE MOTORIST WITH A CHEAPER LABOUR RATE

GUARANTEED WORKMANSHIP

FREE COLLECTION AND DELIVERY IN LOCAL AREA

PLEASE RING: MALC, NEIL OR CRAIG

☎ **01279 813315** OR ☎ **01279 815946**

ANNUAL PARISH MEETING

By Louise Johnson, Clerk. ✉ louise.epc@gmail.com ☎ 07456 791727



Annual Parish Meeting is on Thursday 22 April at 8pm via Zoom.

To join the Zoom meeting:

Meeting ID: 864 0049 6409

Passcode: 937069

The meeting gives residents the opportunity to have their say on issues in the village. Essex County Councillor Ray Gooding, District Councillor Petrina Lees and the Parish Council Chairman will give reports and be available to answer any questions.

Plus, information about our new Community Hall, Open Forum: your chance to give your views.

Everyone is welcome - it would be lovely to hear the views and comments from residents who have recently moved to the village, as well as those who have lived here for years.

PLEASE JOIN US - If you are new to Zoom and would like help to attend the meeting, please contact Moyra ☎ 647351, who will be happy to help.

WORLD'S BIGGEST COFFEE MORNING

By Elaine Terry ☎ 812363 or 07962 586825

✉ elaine.terry2011@btinternet.com



YOU'RE INVITED

Ok folks keep everything crossed that on **Friday September 24** from **9.30 - 11.30am** we will all be able to meet once more at the Bowls Club and raise money for this fantastic charity.

The last year must have devastated their fund raising, so please pop this date in your diary, whether it is to come, bake a cake, donate a tombola prize, make a donation or all of these!

It is always such a great opportunity to get together, meet friends, eat cake, have fun and raise money and it's not often you can do all those things at the same time!

Got any questions? Then please do get in touch ☎ 07962 586825 or ✉ elaine.terry2011@btinternet.com.



ALLASPECTSTREESERVICES.CO.UK



All Aspects Tree Services

TREE SURGERY - STUMP GRINDING
HEDGE CUTTING - FENCING

01279 755545 07940 231964

INFO@ALLASPECTSTREESERVICES.CO.UK

S. PERRY CHAPEL END NURSERY

VEGETABLE PLANTS HERBS & BEDDING
HANGING BASKET & TUB PLANTS

Available
Now

TREES, ROSES, FRUIT BUSHES, HEDGING

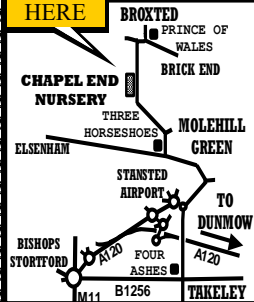
Available
Now

SEED & CUTTING COMPOST
20 Litre Bag
£3 EACH 3 For £8

HORTICULTURAL GRIT
COLOURED GRAVELS
PEBBLES COBBLES

GODWINS
MULTIPURPOSE COMPOST
60 Litre Bag
£4.75 EACH 3 For £12

WE ARE
HERE

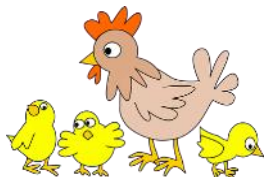


COUNTRY VALUE SEEDS
From 99p per PACKET
Mr Fothergills Seeds
Buy 5 Packs get Cheapest Free

OPEN 9am to 5 pm
MONDAY TO SATURDAY (CLOSED SUNDAYS)
MOLEHILL GREEN ROAD
BROXTED DUNMOW ESSEX CM6 2BW
01279 850771

www.chapelendnurserysperry.co.uk

VEGETABLE PLANTS
BASKET & TUB PLANTS
ALPINES
HERBACEOUS
HERBS
ROSES
SHRUBS
POND PLANTS
AQUATIC COMPOST
GODWIN COMPOST
WILD BIRD FOOD
SUNDRIES



Daisy May's Farm

Hall Road, Elsenham, CM22 6DN

www.daisymaysfarm.org

Get your wellies out, we are REOPENING!!! Boy were we delighted with that news or what.

As from MONDAY 12 APRIL we will be open again every day except Wednesday and Sundays – please check out our Facebook page for times and up to date information.

At the moment there are babies everywhere on the farm including the cutest little chicks, utterly adorable lambs, teeny tiny bunnies, snuffly baby guinea pigs and as for the kid goats, well they are so gorgeous and who knows what else there will be by the time we open, as LOTS more are due any moment! Busy times ahead for us!

Come and see all the animals and feed some of them too. You can also stroll through the Woodland Walk, have fun doing some spring crafts, play on the swings and slide, check out if our resident troll is about and generally blow those lockdown cobwebs away. Spring is definitely on its way at Daisy May's!

However, things have been very tough for us, so if you would like to help us, we would be SO grateful. You can help at:

<https://www.justgiving.com/crowdfunding/alison-thomson-920>

https://www.amazon.co.uk/hz/wishlist/ls/1B5UNRLQREZDL/?ref_lo!_ov_le&filter=default&sort=default&viewType=grid

We also have fertile eggs for sale, along with chickens, ducks, rabbits and guinea pigs.

We are ALWAYS on the lookout for volunteers, so if you have some time to spare, please do get in touch!

We are so looking forward to seeing you.

Thank you for your support.



 **S.E.P** 
**TREE CARE & GARDEN
MAINTENANCE**

Tree Topping & Felling
Pruning & Pollarding
Hedges cut, Trimmed & Removed
All waste Chipped & Removed
Garden, Garage & Site Clearance
Gravel Driveways & Paths
Fencing
Turf Supplied & Laid
Jet Washing Paths & Driveways

Local Tradesman
20 years experience
For a free estimate Phone
07903 621657
08000 588057
14 Day Cooling off Period



**DECORATING SERVICES
ALL ASPECTS OF DIY**

NO JOB TOO SMALL

**For a friendly reliable service
Just Ask.....**

GARY KING

Home : 01279 850001

Mobile : 07951 452602

g.king962@btinternet.com

Taylor Computer Services (Stansted)
On-site Computer Maintenance/Repairs

**DON'T BE RESTRICTED TO OFFICE HOURS, I CAN VISIT YOUR HOME OR OFFICE
DURING THE DAY, EVENINGS OR WEEKENDS AT A TIME TO SUIT YOU.**

Email and Broadband Setup, Data Transfers/Data Recovery, Hardware & Software
Installation, Virus & Spyware Removal & Protection, New PC Setup & Training

Call Derrick on 01279 816418 ~ 07926 289749
Email: Info@tcsstansted.co.uk



Simplylawns
Lawn Treatment Service

Fed up with moss and weeds?

- I offer:
- Regular lawn feeds
 - Weed treatment
 - Moss treatment
 - Aeration
 - Scarification

**CALL ANDREW NOW FOR A FREE LAWN SURVEY
on 07791 128399 or visit my website**

www.simplylawns.co.uk

Local Business. Friendly, professional service

DEVELOPMENT DEVELOPMENTS

By Graham Mott ☎ 812516 ✉ motts@grahammott.plus.com



The Appeal Inquiry into Uttlesford District Council's refusal to allow an increase in the number of passengers per annum at Stansted Airport has now concluded. There were three parties. The Airport appealed rigorously and Stop Stansted Expansion opposed vigorously, whilst UDC took up an equivocal position, insisting that they were right to refuse the application, but also holding that if the Airport agreed to Condition 15, designed to monitor environmental impacts over the next few years, the appeal could certainly be allowed. UDC's QC held by Condition 15 with the tenacity of someone clinging to his last dwindling hope of success, asserting that whether the issue is noise, or air quality, or carbon emissions, or any other nasty which the Airport might generate, if the Inspectors would but agree to Condition 15, all would be well, the Airport would be set for a bright future, SSE would be silenced for the time being and UDC would give a mighty sigh of relief.

The Airport countered that Condition 15 would not do at all; it was onerous, unprecedented and an intolerable interference with their private commercial concerns. And it wouldn't work anyway. For good measure, they also slapped down a claim for the costs of the Inquiry against UDC on the grounds of 'unreasonable behaviour', citing the extraordinary series of events whereby UDC agreed the application back in 2018, then declined to sign it off, then considered it again after the change of administration and refused it soundly the second time round, in January 2020. A legal barney followed, the words 'ambush', 'histrionics' and 'grimaces' were used and UDC agreed to give their response in a month. If the claim is successful, it could cost UDC £lots and then some.

It is very pleasing to walk to the end of Smith Road, off Franklin Drive, near to the motorway, and see that at long last cultivation of the new allotments has started in earnest. When approval was given for new homes to the south of Stansted Road, part of the 'Section 106' agreement with Uttlesford District Council stated that the land would be available to the Parish Council before three-quarters of the homes were occupied, which means that they were nearly three years late. The Parish Council pursued the matter doggedly, but no pressure was brought to bear by UDC, and there is no penalty for late delivery. The Parish Council did not agree to take on the trim trail and all the large area to the south of the site for the good reason that it was not brought up to sufficient standard.

Another 'Section 106' agreement was made back in 2012 whereby land for a Community Hall would be made available off what is now Southfield Close, with contributions from three major developers in the village. Again UDC have been disgracefully dilatory - the land has not been transferred and the payments have not been made. But some progress has been made in determining what the new Hall might look like and a presentation will be made at the Annual Parish Meeting (not a Parish Council meeting). There are more details in a notice on p13, so do Zoom along to the meeting on 22 April, get an idea of what it's all about and have your say. See you there!

Christine's Will Writing Limited

"this firm complies with the IPW code of practice"



**Wills, Will Trusts, Lasting Power of Attorney,
Funeral Plans, Estate Administration
and Safe Document Storage**

Personal, confidential service in the comfort
of your own home, at a time that suits you

Single Wills from £180 • Joint Mirror Wills from £250
LPA's £300 each + Court Fees • NO VAT PAYABLE

01763 848555 / 07703 258555

Christine Grisbrooke MIPW chris@christineswillwriting.co.uk
www.christineswillwriting.co.uk



**- STEPHENS -
CHIMNEY
SWEEP**



*Insurance Certificate supplied - Fully
Insured - Free Smoke Test*

Open Fires - Multi Fuel Stoves -
Aga - Rayburn - Gas - Oil

**CCTV Surveys - Bird Nest Removal
Local Business**

Tel: 0800 112 3600

Mob: 07918 708626

www.stephenschimneysweep.co.uk

Mat Duxbury PAINTING

Professional Interior and Exterior Painting Specialist

References available on request

20 Years' experience

Fully Insured

NVQ Qualified and Health and Safety Certified

Local, reliable and friendly service guaranteed

For a free estimate please contact Mat on  07810 250426 or
email  mat@duxburypainting.co.uk

ELSENHAM





First of all, a very Happy Easter to you all!

As we celebrate the coming of new life, with the spring flowers showing all round the village, the days getting longer and the sun stronger, we also have the promise of a return to some sort of normality as Covid-19 gradually retreats and our vaccination programme progresses.

So where does this leave your Fabric Fund? Well, at the time of writing, not a lot further on unfortunately. We still have ideas for your entertainment during the year, but until we can start to meet together to thrash out the details, they remain just that – ideas. Never mind, as soon as these restrictions ease up we will let you know our plans. Just watch *Elsenham News* and keep an eye on the local websites.

Until then, stay safe, and enjoy your Easter!

NEIGHBOURHOOD WATCH

By Frances Lambert franceslambertnhw@btinternet.com



Spring Garden Crime Prevention

As we move into spring the weather is improving and inviting us out into the garden. It's a good time to take a look around; are your fences and gates secure and do you have locks on gates and will they keep unwelcome intruders out? To the front of your property where possible keep fencing, planting and hedges to about 1.5m in height so that an intruder is not hidden from view.

Security does not have to be just about locks, bolts, and spiky fence toppings; nature provides some excellent plants to keep people away. There are a number of attractive, fragrant plants of a spiky nature such as climbing roses, pyracanthus and berberis and other planting of a dense nature that can work quite well. Have a chat at your garden centre for the right plant for the right location.

When in the garden it is easy to get engrossed in what you are doing, if the house is empty close and lock the door (don't forget the key though!). At the end of the day as well as putting tools away put the wheelbarrow and wheelie bin away too. "It will add insult to injury" if your tools are used to break into your own house or provide a climbing aid or method of carrying things away.

Mind how you dispose of the packaging of your new tools and lawn mowers etc, don't advertise it with your empty boxes on display outside for roadside collection, fold boxes inside out or break them up.

Binwash

We clean
your
wheelie
bins!

Commercial & Domestic



Monthly Cleaning
from just **£4.50!**

Professional equipment

Same day as waste collection

www.binwash-uk.com

01799 529899

enquiries@binwash-uk.com

Naomi



Gardening & Design

Creating outdoor spaces for living



Garden Maintenance & advice



Garden design & Consultation



Bespoke planting designs

Call for a free estimate

M: 07778 620576

E: Naomi@NaomiGardenDesign.co.uk

W: www.NaomiGardeningandDesign.co.uk

Trained at Capel Manor College

ANGLIA



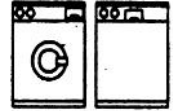
ELECTRICS

Established 1972

Domestic Appliance Repair Service

We offer Specialist Dishwasher,
Refrigeration & Cooker Service, in addition
to our long established and renowned
Washing Machine Service

Our Engineers are
Experienced and
Trained to service
most makes



01279 658767

Friendly Prompt Service

NICK SHUTES

PAINING AND DECORATING LTD

High quality interior and
exterior redecoration

Woodwork repairs and
replacements

Fascias, soffits and cladding

01799 542385
07885 778213

www.nickshutesdecorating.co.uk

Luxury Toilet Hire (UK) Ltd



Whether you are arranging a wedding, private party or corporate event, let Luxury Toilet Hire (UK) Ltd provide you with the perfect toilet facility to make your occasion a memorable success.

Cesspit emptying also undertaken.

Tel: 01371 873003 or 01279 504638

Email: info@luxurytoilethire.co.uk

Web: www.luxurytoilethireltd.co.uk



We also hire out mobile fridge and freezer units.



Please contact us for a quote:

Tel: 01371 873003 or 01279 504638

Email: info@chillermatic.com Web: www.chillermatic.com

BMH

WINDOW CLEANING CHERRY PICKER HIRE (12.5M)

Window Cleaning

Gutter Cleaning

Commercial Window Cleaning

Excellent Rates

Professional & Trustworthy

Fully Insured

References on request

07852 722139

"Get rid of the grime with a Tony shine"

- Extensions
- Barn conversions
- New Homes
- Loft conversions
- Planning Drawings
- Building Regulations
- Project Management



Local Architectural Design

Free initial consultation

t: 01799 540600

e: info@alundesign.com

www.alundesign.com

Alun Design Consultancy, Neville House, Station Road,
Wendens Ambo, Saffron Walden, Essex, CB11 4LB

alun

design

consultancy

architectural design

planning

project management

interior design



Guilds were an early form of trade association. They became established in the Middle Ages by groups of merchants to control standards and promote their particular craft or skill in the locality in which they operated. Some acquired sufficient funds and status to erect their own premises or Guildhalls in market towns. These buildings were used for meetings and other functions by the guilds. Some were designed to allow markets or trade on the ground floor.

The Hundred Parishes has some wonderful surviving examples of guildhalls. Thaxted is probably the best known - three storeyed, timber framed and jettied, built in the 15th century. Thaxted was an important centre of cutlery manufacture and it is believed the cutlers helped to fund the building we now know as the Guildhall. Its original purpose is uncertain; it may have had broader uses as a moot hall or civic meeting place. The building later became a school and today it is used for parish council and other meetings and incorporates a small museum of Thaxted's history.



(Thaxted Guildhall)

The guildhall at Linton was built in 1523 and is now a private house. It was once the home of Sir John Kendrew who was awarded the Nobel Prize for Chemistry in 1962.

Finchingfield's 15th-century guildhall stands beside the parish church. In the past it was used as almshouses and now the renovated building houses a library and excellent museum. The first floor is used in non-Covid times for courses and is available for private hire.

In Church Lane Clavering you will find a 15th-century timber-framed and plastered building. Now a private dwelling, it was built as the guildhall and later served as a workhouse and then almshouses.

Ashdon's former 15th-century guildhall, behind the church, also later served as a workhouse before becoming a private house.

The Hundred Parishes is 450 square miles of northwest Essex, northeast Hertfordshire and southern Cambridgeshire that is largely unspoilt and is richly endowed with many fine examples of agricultural and built heritage. The area has shared a common history which shaped and preserved its distinctive landscape of small and medium-sized farms linked by winding lanes and ancient rights of way to hamlets, villages and then to small market towns. For more information visit www.hundredparishes.org.uk.

The Beauty Shack Elsenham

07703 784466 / 01279 497236

- * Waxing
- * Facials
- * Massage
- * Nails
- * Tints
- * Spray Tans
- * Lash Extensions
- * Lash Lift
- * Occasion Hair and Makeup



Vouchers Available

hpc (State Registered) **Chiropodist**

CH09088

Home Visiting Practice

Mrs Julie Golden

Est. 1994

01279 873492

A professional service at a
competitive rate

Do-It-4U

Repair, Care & Maintenance

For your Home and Garden

- ◆ **Plumbing, Electrical & Carpentry Services**
- ◆ **Drain Blockages Cleared**
- ◆ **Gutters Cleaned, Repaired or Replaced**
- ◆ **Gardens Tidied & Maintained**
- ◆ **Hedges & Topiary Trimmed & Shaped**
- ◆ **Fences Erected & Repaired**
- ◆ **Sheds & Other Sectional Buildings Erected**

Telephone
01279 814411

Mobile
07774 877320

From



to



As you will have guessed, Elsenham Church is unable to celebrate Village Good Friday at the War Memorial this year but Elsenham News have kindly allowed us some extra space to explain what we are doing instead and to provide some Easter activities for the children – see the fourth page of our “pull-out”.

First though ...

HAPPY EASTER!



Although we will not be able to gather around the cross in the Memorial Garden, we are sending others in our place.

Look out for them over the Easter weekend!

We will also be running a “locational quiz” for all the family to get out and look around our village, spot where various ‘photos have been taken and spell out an Easter message.

Get the quiz from our church website (search for “heuchurch”), from Facebook, or from posters around the village.

And we have raised some Easter Chicks which, rumour has it, lay tasty eggs. Children (only!) look out for them around the village from Easter Sunday until Wednesday.



ST MARY'S CHURCH ELSENHAM
The Vicarage, Carters Lane, Henham ☎ 850281

It is a strange anomaly that in the Church's calendar just eight weeks after celebrating the birth of our Saviour Jesus Christ at Christmas we are in Lent, the period of forty days leading up to Easter when we commemorate his death and resurrection. Christmas is widely celebrated with parties, cards, presents, an excess of food and drink and family get-togethers. Not so much in 2020, of course. Easter has always been different, with celebrations being more low-key.

This is not surprising. The birth of a child is always a cause for much joy and celebration, whereas a death, regardless of the age or condition of the person involved, is always a sad affair. Yet the death of Jesus was no normal death, because it was followed three days later by a resurrection – a return to an earthly life. This had never happened before, nor since. The bible teaches us that Jesus raised his friend Lazarus, and the daughter of an official of the synagogue named Jairus, to life after they had both died. But we can be sure that they did eventually die, their 'resurrection' was only a temporary thing.

With Jesus it was different. His rising to life was permanent, he lives for eternity. And having paid the price for our sins, our wickedness, it means that death has no claim on us either. We shall live forever with Jesus in heaven. This is a bold claim for which I have no earthly evidence, other than what Jesus said and what was faithfully recorded by the gospel writers at the time. This is why the funeral service in the Book of Common Prayer talks of 'the sure and certain hope of the Resurrection to eternal life, through our Lord Jesus

Christ'. It is this assurance that fills Christians with such joy. Whatever trials and tribulations we are to endure in this world we know that something better awaits us.

Good Friday is called 'good' because we know that the sorrow and sadness that surrounded Jesus' trial and execution will be forgotten on that glorious Easter morning when we can celebrate His resurrection, and look forward to the time when we will be reunited with Him, in heaven, for eternity.

As we travel along the Prime Minister's road map to recovery we hope that, all being well, we shall be able to re-open our churches for services in April. Look for announcements on social media and the other usual news outlets.

Roger Clark
Churchwarden



For Christ suffered once for sins, the righteous for the unrighteous, to bring you to God. (1 Peter 3:18)

We wish you all a blessed and joyous Easter.

Christ is Risen!

CHURCH EVENTS IN OUR VILLAGES APRIL 2021

Church Services

We are restarting some in-person services from Easter Sunday. The service pattern is as follows:

4th April: Easter Sunday

10am Morning Prayer, Ugley

11.15am Holy Communion, Henham

11th April:

8.45am Morning Prayer, Elsenham

10am Morning Prayer, Ugley

18th April:

10am Morning Prayer, Ugley

11.15am Morning Service Henham

25th April:

8.45am Morning Prayer, Elsenham

11.15am Morning Service, Henham

This is subject to regular review in line with the government roadmap out of lockdown.

We are also still meeting 'virtually':

HEU Combined Churches Service

Available via the website each week:

www.heuchurch.co.uk

Or search 'Henham, Elsenham and Ugley' on YouTube

'Zoom Service' at 9.30am

We use the **same link** at the respective times each week. Contact Charles Willbe (c@willbe.me.uk) for the link

CHRISTIANITY | EXPLORED

WHAT'S THE BEST NEWS
YOU'VE EVER HEARD?



Covid, masks, tiers, restrictions, the economy, missing hugs....Fed up hearing bad news?

Are you longing for some good news?

What about hearing the best news ever?

Christianity is all about Christ and Christ IS the best news ever. But don't just take our word for it.

Join us on zoom as we follow an eyewitness account of the life of Jesus Christ and see for yourself how he really is the best news for all people.

Courses via Zoom at times to suit you. If you would like a place on a course, contact office@heuchurch.co.uk with the days and times (am, pm or eve) that are best for you.

Other regular events

St Peter's Ugley Junior Church

Parents sent material for each week's session, to be done at home. Term time.

Elsenham Sunday Club/Explorers

(Y1-Y6) We continue to run the magazine programme each week. This includes a story, teaching sheet, family prayers, quizzes and crafts. Contact the administrator to receive the magazine.

Henham Sunday Club (age 5-Y3)

We will send an audio file, a picture story and activities to parents by email.

Henham Explorers (Y4-Y6)

Not currently running. Contact the administrator to be sent weekly material.

Christian Play (Y1-Y2)

We continue to run the magazine programme each week. This includes a story, teaching sheet, family prayers, quizzes and crafts. Contact the administrator to receive the magazine.

Henham Little Fishes pre-school group **Thursdays, 10.15am**

Meeting via Zoom until restrictions change to enable us to meet physically.

Elsenham Little Fishes pre-school

group Weekly resources provided during term time.

Pathfinders (Y7-9) – Sundays, 6pm

Meeting via Zoom. We'd love to have new members join us!

Crammin' (Y10-Y13) Sun evenings, 7pm

Zoom sessions for an hour including chat; games; and a short bible discussion - until such time as we have a solution for meeting physically again.

EASTER EVENTS

Henham Easter Egg Trail - Saturday 3 April 2-4.30pm

Collect trail map from outside the Church Hall, Henham. Buggy friendly, suitable for toddlers & primary age children. Small prize at the end.

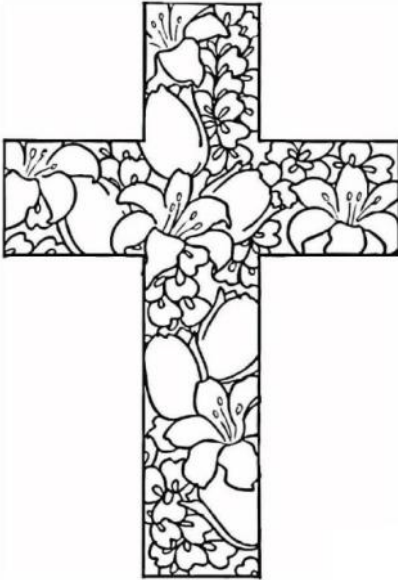
Elsenham - look out for:

Easter display at the Memorial Gardens, an **Easter quiz**, and **knitted Easter chicks** hidden around the village. Further details on posters around the village, and Facebook.

Here are some Easter activities for the children

... for colouring

... for word-searching



W	Y	F	X	N	D	T	T	R	R	Q	N
N	T	R	Y	O	G	E	B	W	B	G	X
J	E	M	Z	I	T	R	A	M	G	N	R
B	K	V	Q	T	R	L	O	D	E	A	A
W	R	Z	A	C	Y	T	N	N	N	M	I
H	E	W	L	E	Q	M	I	G	L	L	S
H	T	T	M	R	H	L	E	D	F	D	E
Z	S	F	L	R	M	L	F	K	H	W	D
L	A	Q	M	U	S	T	D	F	R	T	D
X	E	M	D	S	Z	Q	X	K	Y	D	Q
Z	D	B	L	E	J	E	S	U	S	V	X
T	X	M	K	R	K	J	E	N	O	T	S

ANGELS, DEAD, EASTER,
HEAVEN, JESUS, LINEN, RAISED,
RESURRECTION, STONE, TOMB

... and for decoding (A=1, B=2 etc.)

3	8	18	9	19	20		4	9	5	4			
6	15	18		15	21	18		19	9	14	19		
1	3	3	15	18	4	9	14	25		20	15		
20	8	5		19	3	18	9	16	20	21	18	5	19
8	5		23	1	19		2	21	18	9	5	4	
1	14	4		8	5		18	15	19	5			
1	25	1	9	14		20	8	5					
20	8	9	18	4		4	1	25					
1	3	3	15	18	4	9	14	25		20	15		
20	8	5		19	3	18	9	16	20	21	18	5	19



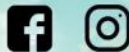
**Energetically clean your property,
restoring peace, joy and comfort.**

- Are you buying or selling a property?
- Moving into a new rental property?
- Having issues selling or renting out your property?
- House feel chaotic for no reason?
- Unable to keep house organised no matter how hard you try?
- Is there a corner in the house that you and your family avoid?
- Feel uncomfortable in your own home?
- Do you feel stuck in life but can't explain why?
- Feel drained all the time?
- Hear, see or feel things in your home?
- Heightened emotions for no reason?
- Something just feel off in your home?

Negative energies in our home can impact your emotional and physical health, your relationships and even your children and pets.

**GET IN TOUCH NOW TO RESTORE PEACE,
JOY AND COMFORT BACK TO YOUR HOME.**

www.greenlightrealignment.com
info@greenlightrealignment.com





The Executives Choice Chauffeur Company providing clients with premium transport at affordable prices. Airports, sporting events, theatre trips etc.

Corporate accounts welcomed.
7 Seater available

To discuss your requirements

Contact Graham Anderson: graham@execschoice.com

Phone 07481 494988

www.execschoice.com

Your local, independent sales & letting agent

- Sell or let your home with no fuss & the best price possible
- Accompanied viewings weekends & evenings
- Fixed fees or percentage (No VAT to pay)

Call 01279 813318 to book a free, no obligation valuation.



rightmove  Zoopla  PrimeLocation  OnTheMarket.com 

1 Station Road, Stansted, CM24 8BE
Email: peter.james@murdochsestateagents.co.uk
www.murdochsestateagents.co.uk

ELSENHAM VILLAGE HISTORY SOCIETY

By Mike Rea, Secretary ☎ 813634 ✉ evhs12@hotmail.co.uk

🌐 www.elsenham-history.co.uk



I start this month's musings with a thank you to John and Hilary Todd who have very kindly donated a number of colour slides of railway subjects dating from the 1960s. These are in the process of being scanned onto a computer and catalogued. We are always delighted to receive any material that helps tell the story of Elsenham, be it photographs, postcards or even a jotted down memory. Photographs and documents will be scanned and returned to their owners. Please get in touch if you have any material you would like to share.

I must also thank Sue Johnson who has sent along her thoughts from lockdown that will go towards our Covid Diaries. If you have any anecdotes, stories, thoughts from lockdown you would like to share with us, please get in touch.

A lot of this material ends up on our website (address above) and if you haven't already, please do take a look. Within its pages you can find a timeline of the village from earliest times through to the present day, recordings of village residents telling tales of times gone past and galleries of photographs featuring significant happenings in the life of the village as well as lots, lots more. To paraphrase a once well-known Sunday paper, all village life is here!

Back in February, I mentioned an Elsenham windmill that, after some research, was actually discovered to have been in Henham. Since then it has come to light that it was thought there was once a windmill in Fullers End to the East of Footpath 12 that runs south towards Tye Green. Looking for any remains is on the "list of things to do after lockdown". It has also been noted that there is a scratched outline of a windmill close to a window in the tower of St Mary's suggesting that at one time the mill would have been visible from there. This will be another thing to check on the post lockdown list.

It is also thought that there was also a watermill, appropriately enough down Mill Lane, that may have started off as a Fulling Mill, perhaps giving its name to Fullers End. Fulling involved the cleaning of woollen cloth after weaving to eliminate any dirt and impurities and to make it thicker. Originally this was carried out by pounding the cloth with wooden clubs and occasionally the fuller's hands and feet. From Mediaeval times on, however, this process was carried out in watermills, followed by stretching the cloth on large frames known as tenterhooks, to which it was attached by tenterhooks. It is from this process that the phrase being on tenterhooks comes.

Our next meeting is due to be held on 9 June which is just a couple of weeks before the official end of Covid restrictions so it is unlikely to go ahead.

Quite when we will be able to get together for our first post-lockdown meeting is still unclear but we look forward to welcoming you through the door when it does.



T.J. Patmore
Building Services

- Extensions – Loft Conversions
- Roof work – Carpentry – Roof Tiling
- First and second fix carpentry
- Kitchen fitting
- Built in wardrobes
- Decorating interior and exterior
- Floor and wall tiling
- Fencing – Decking – Patios
- Supply and fix u.p.v.c. windows
- House maintenance

*Call Trevor for friendly help, advice
and FREE estimates*

tel 01279 816097
mob 07932 666224



E. N.C. Electrical Limited

Industrial Agricultural Domestic

Electrical Installations

Fire Alarms/Emergency Lighting

Fault Finding

Portable Appliance Testing

Fixed Wiring Test & Inspection

Over 25 Years Experience in the
Electrical Industry

Contact: Ian Arran

Tel. 01279 647042
Mobile 07776 252994



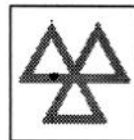
Email: encelectri-
calltd@btinternet.com

44 Alsa Gardens Elsenham

Bishop's Stortford Herts, CM22 6HB

GARRETT'S GARAGE SERVICES

42 Golds Business Park, Elsenham
Bishop's Stortford, Herts CM22 6JX



- Mechanical Repairs
- Servicing
- Tyres
- Engine Tuning
- Computer Diagnosis
- Windscreen Repairs
- M.O.T.'s - Catalyst & Diesel Tested
- E.H.D.C. - Authorised Hackney Carriage Testers
- Batteries
- Exhausts

*MODERN WELL
MAINTAINED
WORKSHOP*

ALL MAKES OF VEHICLE

**FREE COLLECTION AND*
*DELIVERY SERVICE**

TEL: 01279 647777 FAX 01279 817622

ELSENHAM VILLAGE



SATURDAY 26 JUNE 1-4pm

As our original choice of date for our Village Fete was not possible, it would have been very easy not to bother once again this year, but we were adamant the fete must go on!!

We are really hoping that this year's fete will be particularly special and a real celebration. We also know that this date might not suit everyone and for that we apologise, but there is a narrow window for a fete like this and we have tried to do our best for the village as a whole.

We totally understand that some people may be a bit nervous as none of us will be used to being in a crowd, but we will obviously follow government guidelines and make the fete as safe as we possibly can and luckily our playing fields are BIG! It also means that any activities we have had previously that involve getting close to others won't be able to go ahead this year, such as face painting, pony rides, holding small animals, etc, but don't worry there will be SO much else to do and never fear, they will be back as soon as we can!

Also, if you have a special vehicle you would like to bring along to the fete, please just turn up on the day between 9.30am and 12 noon – the more the merrier!

If you would like a stall, please either return a fete booking form or email me at the address below – many thanks.

We would really like lots for our young villagers to do, so if we can get the games, please can you help run a game stall? Also, maybe you have a game we could borrow? If so, please get in touch, thanks so much.

We ALWAYS need help for the fete, particularly in setting up, but DEFINITELY in breaking down – the more helpers, the quicker we can do the job.

Also, if you would like to promote your business to LOTS of local people, then please do get in touch and we may be able to help you there.

Come on Elsenham, let's make this a fete to remember and a real celebration!!

Please get in touch either calling on ☎ 07962 586825 or emailing on elaine.terry2011@btinternet.com – I look forward to hearing from you.

Very best wishes,



The Fete Team



YOUNG'S

WINDOW CLEANING SERVICE

We specialise in residential properties offering a quality and regular service for exterior and interior cleans
Serving the Elsenham community for the last 10 years

Call or text Malcolm for a FREE quote
07817 481901

01279 656 983 - 0800 587 2556

Unit 1, Suite 1, Peek Business Centre, Woodside Road, Bishops Stortford, CM23 5RG



- Aerial Installations
- CCTV & Security Alarms
- Audio Visual Installations
- Wireless & Wired Networks
- TV Wall Mounting Services
- Sky Installations & Subscriptions
- Freesat Installations & Receivers
- Multiroom Music & TV Distribution
- Family Run Business



www.mediacomS.co.uk

info@mediacomS.co.uk

Hospice project celebrates three years of founding 150 friendships

St Clare Hospice is celebrating the third anniversary since the launch of its social movement project, Compassionate Neighbours – a project which is connecting communities, building community resilience and helping to prevent social isolation.

Compassionate Neighbours is an award-winning project which aims to help tackle loneliness within local communities. Since the project started at St Clare Hospice, in 2018, it has connected more than 300 people, with 166 volunteers who have trained to become Compassionate Neighbours – giving an hour a week to offer social and emotional support to others who are isolated.

The Compassionate Neighbours project has become a vital scheme during the pandemic, when instances of isolation and loneliness have increased with lockdown and the restrictions, especially in relation to those who are clinically vulnerable. To date, the project has already matched more than 150 Community Members (socially isolated individuals in the local community) and is open to people to self-refer to the service or for professionals to make referrals.



The Compassionate Neighbours are ‘matched’ based on common interests, lifestyles and experiences and both parties benefit from a mutual, supportive relationship as friends.

A core feature of the Compassionate Neighbours is the mutual benefit for the Compassionate Neighbour as well as the Community Member. The project is actively recruiting volunteers who are able to spare time to bring friendship to the lives of people who are lonely and socially isolated. Regular training sessions are being run, currently via online meeting platform Zoom and volunteers are DBS checked prior to becoming Compassionate Neighbours. Volunteering as a Compassionate Neighbour is a rewarding role where people can build genuine friendships by calling or meeting a local, socially isolated person every week.

Contact Stacey Towler, Compassionate Neighbours Manager, at St Clare Hospice for more information.

St Clare Hospice is a charity providing specialist palliative care for people living with terminal or life-limiting illnesses across West Essex and East Herts border. We care for patients and their families, providing physical, emotional, social, psychological and spiritual support, and ensuring they have timely access to skilled, compassionate and sensitive care in a place of their choice. Our services are free of charge to those who need our care, but cost over £4.6 million a year to run. With limited NHS funding we need to fundraise the majority of this each year through donations and other voluntary sources.

Options Hair Design and Hair Loss Clinic

An essential choice with a passion for hair

We welcome you with a complete in-depth consultation, whether this is for a change of style or colour or for more clinical advice on the health of your hair and scalp.

For clients visiting The Hair Loss Clinic we are able to offer a completely private consultation and treatment room away from the main salon. We offer proven treatments for hair loss and also provide a complete wig fitting and finishing service. We work closely with a leading UK Trichologist who holds regular clinics with our clients.

Our products are organic and formulated to enhance your hair health. Our dedicated stylists will work with you to achieve the look and feel that you want. Our salon has parking right outside and a warm welcome awaits you.

Elsenham Salon 01279 812665

Bookings not always necessary

www.optionssalon.co.uk

Hair Loss Clients please call Ann on 07957 166436



ELSENHAM VILLAGE HALL

Elsenham Village Hall needs a new caretaker from this September who can help us for the long term.

It would be three or four evenings a week during term time and one or two evenings out of term time. It's the perfect job for someone local looking for work a few hours a week. From time to time there is other work, occasionally on Saturdays.

The pay is very competitive, with extra offered for unsocial hours.

If you want to find out more, let's have a chat.

Please call Elaine Terry on ☎ 07962 586825 or ✉ elaine.terry@btinternet.com.



New location – New name!

Hawkins & Co Accountants & Bookkeepers Ltd, formerly A Wilson Accounting, would like to celebrate our expansion into 33 Cambridge Rd, Stansted, CM24 8BX by offering 10% off services to all new clients that join us in April 2021.

CALL 01279 812277

(10% will be deducted from the total net cost of service provided, valid for 1 year only)



FOOTGOLF | 9 HOLE GOLF | TOPTRACER
DRIVING RANGE PLUS FOOD AVAILABLE
INDOORS, OUTDOORS OR TAKEAWAY!

1066 ADVENTURE GOLF
Everyone Welcome!

Golf World Stansted, Hall Road, Nr Stansted Airport, Essex
CM22 6FL | 01279 812 865 | leanne@golfworldstansted.co.uk
www.golfworldstansted.co.uk

Bobby's Gardening Services Ltd.

We provide high quality workmanship at reasonable prices, letting our work speak for itself. Our work includes both landscaping design and garden maintenance. Local friendly business. Visit our website below. We are also on checkatrade.com.

Our services include: full garden design, decking, fences, new lawns, patio, artificial grass, garden walls, raised beds, sheds, bespoke seating, fire pit, water features, planting, living walls, stone walls plus garden maintenance.

Contact us on: 01279 957770 or 07961 546929

E: bobbysgardeningervices@yahoo.co.uk

<http://www.bobbysgardeningervices.co.uk>

CM22

NATURAL OUTLOOK ON APRIL GOINGS-ON

By Heather Salvidge 📞 814153



April usually tells us that we are not – yet – quite finished with winter, but as compensation there's a lot going on. The wet weather over the last few months has raised the level of the water table a great deal and kept water in streams and seasonal ponds etc. that had been dry for a long while. By now the two clumps of frogspawn laid a few weeks ago in the watercourse that goes through our back garden should have become tadpoles – fingers crossed. Frogs spawn in clumps of 'jelly' which protect the black dots which are the developing tadpoles and frogs are the ones with smooth shiny skins. Toads have warty skins and lay the spawn in chains and like their water a little deeper. Common newts, about 4" long, lay eggs and the female wraps up each one in a leaf in the pond/water where they were laid. Great crested newts, about 5½" to 6" long, do the same with the female laying about 200 eggs and wrapping up each one so you can imagine how long it takes her to do the lot. G.C.N.s are a rare and protected species, the male growing his crest in the breeding season which is when they spawn, round here in the Aubrey Buxton nature reserve. I have little hope for any spawn or eggs laid in the top pond to mature after the thoughtless release of 'the goldfish' which feed on the British wildlife in the pond. But as there has been a lot of water this year in the seasonal 'moat' we may get lucky there.

In the rest of the reserve the early trees will be coming into leaf and the bluebells and wood anemones starting to flower along with the diverse clumps of the rare oxlips, a much paler yellow than the more usual cowslips. 'Our' side of Alsa Wood can boast all three of these species and many more oxlips scattered through the wood so it's a good idea to stick to the public footpath and 'the trails' so as not to accidentally tread on them.

What I would love is for a local cuckoo to come back for the summer. There are many fewer returning than 20 years ago when there was a resident one in Aubrey Buxton and indeed also in Elsenham. It seems that they do not winter well in Africa or are shot on the way back. If you walk past a damp area on a footpath you may see some Lady's smock or 'Cuckoo flower' It is between 6" to 10" tall and has clusters of four-petalled pale lilac flowers. Called 'Cuckoo flower' perhaps because it blooms at the same time as the cuckoos come. Returners such as blackcaps, chiff-chaffs and other songbirds arrive from their wintering grounds so birdsong increases as territories are established but any that have wintered here tend to move north. Coming back as well, are swallows and house martins, though I doubt if many of the latter will nest in central Elsenham except in the eaves above the flats in Ambrose Corner. You might see swallows around Fullers End, Green Street or Tye Green. All very busy with raising their broods.



Cuckoo flower

Spellbrook Garden Design

DRIVEWAY & GARDEN DESIGN

- ✓ Decorative Walling and Fencing
- ✓ Patios & Paths
- ✓ Block paving, Tarmac and Graveling
- ✓ Decking
- ✓ Turfing, Garden design and build
- ✓ Stone cleaning

spellbrookgardendesign.simdif.com

Tel: 07799 603089 / 01279 503936 / 0800 696 5257

Westwoods, London Rd, Spellbrook CM23 4AH



[Checkatrade.com](https://www.checkatrade.com)

[myBuilder.com](https://www.mybuilder.com)

GLYNN'S CHIMNEY SWEEPS

Est. 1995



VACUUM AND BRUSH

**NACS MEMBERS
HETAS APPROVED**

COMPETITIVELY PRICED

01279 424983

www.glynnschimneysweeps.com

Essex Autospray

Your local Collision Repair Centre - Est 1982

- Free Courtesy Cars
- Free Estimates
- Low Bake Ovens
- Blackhawk Alignment



Tel: 01279 816296 E: info@essexautospray.co.uk

www.essexautospray.com

M11 Business Link, Parsonage Lane,



The street where I live by Petra Studholme

Petra writes about her time in Leigh Drive

We decided to move in 1994 from Sawbridgeworth. We looked at housing estates within commuting distance to London. Some new builds were so bad with no green space and crammed in, I refused to get out of the car. My husband found Leigh Drive, we walked around the estate, looked at bare soil where our dream home would be. Liking the Leigh Drive houses, we viewed one inside. We walked around the village, the fields and Alsa Woods and paid a deposit there and then. Elsenham had what we needed: railway within walking distance, close to the M11, surgery and village shop and a wonderful feel to it.

We immediately loved the friendliness of our direct neighbours, the whole village had a feel of a small community and village life. Most of our neighbours had children the same age as our daughter Julia. Long-term friendships were formed and we all helped out where we could. Highlights were kids playing in the cul-de-sacs safely, street parties (closing the street, having a BBQ and bouncy castle for kids/big kids) as well as the recent help-out scheme during the pandemic where we supported each other, in particular those shielding. We introduced socially distancing coffee mornings check-ins on our driveways to make sure everyone was OK.

We have the highest praise for Elsenham School and clubs within the village, cubs, beavers, scouts, football, tennis and cricket, all run by volunteers for the benefit of the community. One of the best decisions of our lives was to move to Leigh Drive in Elsenham.

GARDEN HINT *By Sue Johnson*

Apply lawn spring feed. Combined products containing moss killer, weed-killer and fertiliser can be useful.





Pike's Plumbing & Heating

Whether you're looking for a plumber or heating engineer, Pike's Plumbing & Heating can help.

If it's an emergency, simple problem or you're just thinking about a new boiler or bathroom give me a call – I'm available when you need me 24/7. Now's a good time to think about servicing your boiler too and make sure you're not left out in the cold! **No Call-Out Charges & Free Quotations**

Tel: 07889 140035

Craig Pike

Email: info@pikesph.co.uk



Web: www.pikesph.co.uk

DANIEL ROBINSON & SONS

Independent Family Funeral Directors & Monumental Masons

Est 1892

Always here when you need us...

- Arrangements in the comfort of your own home, if preferred
- Private Chapel of Rest
- Pre-paid funeral planning services
- Traditional & contemporary funerals to suit your wishes

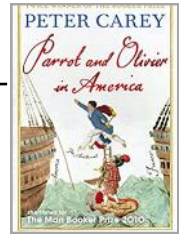


**79/81 South Street
BISHOP'S STORTFORD
01279 655477**

www.drobinson.co.uk

PARROT AND OLIVIER IN AMERICA by Peter Carey

Reviewed by Marion Giles



'Olivier is an aristocrat, the traumatized child of survivors of the French Revolution. Parrot the son of an itinerant printer who always wanted to be an artist but has ended up a servant. Born on different sides of history, their lives will be brought together by their travels in America.'

When Olivier sets sail for America, ostensibly to study its prisons but in reality to save his neck from one more revolution - Parrot is sent with him, as spy, protector, foe and foil. As the narrative shifts between the perspectives of Parrot and Olivier, and their picaresque travels together and apart - in love and politics, prisons and the world of art - Peter Carey explores the adventure of American democracy, in theory and in practice, with dazzling wit and inventiveness..' So says the blurb on the back of the book.

Reviews:

'Carey is a wily and supremely confident storyteller on a grand scale.' **The Times**

'Fizzing with fictional panache ... Exhilarating.' **Sunday Times**

This was the choice for the book group this month. I'm afraid none of us found this book to be 'fizzing with fictional panache' nor exhilarating. In fact, we found it quite tiring to read and most got a bit fed up with it. The language was convoluted with lengthy sentences. The book lacks much at all in the way of plot. The historical descriptions were interesting but the story woven around it hardly credible.

In truth, this book was not much liked by those that finished it. That probably says enough. Most of us found it, although an interesting concept, a little confusing. The plot was not entirely clear and characters seemed to pop up without context. We agreed that Parrot was a more likeable character and his story rather more engaging but not so much that it made the book enjoyable.

The novel is a reflection on the Old World and the New World through the eyes of both main characters, Parrot and Olivier. The novel alternates point-of-view narratives between Olivier and his future man servant Parrot. Olivier is a pompous, petulant, sickly boy, with parents who are perpetually on edge who narrowly escaped execution. Olivier is sent to America largely under a false pretext and finds himself shackled to Parrot once they reach America having hoped to be rid of him.

It is based on real-life characters that Carey has researched. It is also supposed to be funny but we all seemed to have missed that.



SDS Installations Ltd

AERIAL AND SATELLITE SERVICES
FOREIGN SATELLITE SYSTEMS - CCTV - EXTRA TV POINTS - SKY LINK UPS
PHONE POINTS - HOME SIGNAL DISTRIBUTION - WALL MOUNTED PLASMA/
LCD SCREENS - CABLES SUPPLIED AND HIDDEN

Alan Smith
50 Sunnyside
Stansted
Essex CM24 8AX

01279 279012
07771 881042
sdsinstallations@hotmail.com
sdsinstallations.com

6 Windmill Close
Great Dunmow
Essex CM6 3AX

Andrew Allen Heating Services

07973 688286

lunarpond@hotmail.co.uk

- 'Gas Safe' registered
- Boiler and appliance servicing and breakdowns
- Plumbing and heating installation and maintenance
- Natural gas
- Landlord certificates

CLEAR OVENS

Oven Cleaning Specialists

01279 89 89 96

we accept cards!
VISA
MasterCard

Make your oven look showroom fresh with a professional clean from **Clear Ovens**. Our fully insured expert technicians will make it shine like new.



The Association of Approved Oven Cleaners



MEMBER OF THE FEDERATION OF SMALL BUSINESSES

Covering Sawbridgeworth, Harlow Epping, Great Dunmow, Braintree, Stansted, Bishop's Stortford and surrounding areas.

01279 89 89 96 or visit us online at
www.clearovens.co.uk

The difference is clear

ELSENHAM TENNIS CLUB

By Petra Studholme ☎ 814667



Elsenham Tennis Club play is back!

At the time of writing this article we are hopeful that play will resume as of the end of March. Fingers crossed!

The best way to keep up to date is via our Facebook page or our website
📄 www.elsenhamtennisclub.co.uk

Our new season starts on 1 April 2021 so sign up now!

Our membership fees are amongst the lowest in the area, and it is quick and easy to join, just sign up online.

- Individual membership: £65
- Couple: £115
- Family: £125
- Senior: £40
- Student: £35
- Junior: £15

We have floodlights that allow us to play until 10.30pm as well as regular club nights, competitive league play (including inter-club), ladies' mornings and coaching (individual and group lessons). Court bookings are online. You will get your own key and we will show you how to operate the lights via tokens that you can purchase from us. To find out more visit our website, or get in touch via Facebook or mail@elsenhamtennisclub.co.uk.

Weekly schedule: once we are allowed to run these again please note that we operate these events strictly adhering to government and LTA guidelines in place at the time, limiting numbers via a pre-booking system. Strict measures are in place putting everyone's safety first.

Tuesday evening – club night

Wednesday morning – ladies' morning

Thursday evening – two group coaching sessions

Friday morning – ladies' morning

Sunday afternoon – leisure play

Coaching: our passionate and dedicated coach, Steve, has individual and **group lessons to suit all needs, ages and abilities. See website for more details on how to get in touch with him.**



Double Glazed Units – SAME DAY

- Table Tops
- Shelves
- Emergency Glazing
- Replacement Misted Double Glazing
- Greenhouse Glass
- Cat and Dog Flaps Fitted
- Splash Backs – Any Colour
- Glass Cut To Size
- Emergency Boarding
- Safety Glass
- Mirrors

**LOCAL COMPANY – GREAT PRICES – RELIABLE
PROMPT SERVICE**

Elsenham – Great Dunmow – Bishops Stortford - Stansted



*Bobby's
Construction
Services Ltd.*



Specialised joinery and carpentry, wood flooring, painting and decorating, internal & external, tiling, kitchen, bathroom, decking, paving, electrical work

Contact us on: 01279 957770 or 07961 546929
bobbysem@hotmail.co.uk

Checkatrade.com
where reputation matters

CM22

City & Guilds
Qualified

ELSENHAM BOWLS AND SOCIAL CLUB

By Sue Waite ✉ suewaite2003@yahoo.co.uk



Hi everyone, there is light at the end of the Corona tunnel and hopefully we will be out of lockdown soon.

I don't know about you but I have found this lockdown particularly difficult, suffering with really low moods, so it is heartening to think that it will soon be over as long as we follow the guidance and everything goes according to the Government's plan.

Our first game in the bowls club is due to be on Friday, 23 April at 6pm with an opening night roll-up and on Saturday we will have a two-wood internal competition at 1.30pm. We will also have a limited outdoor bar. So, even if you are not bowling, please come along and watch the games and have a drink al fresco. Our bowling will, of course, be subject to Covid guidelines.

If all goes well we will be back to 'normal' (whatever that is) on 21 June with a full programme of bowling and lots of exciting social events to look forward to.

A charity quiz has been organised for Saturday 3 July at 7.30pm in the Club House – there will be teams of eight. £8 each to include supper.

We will see you all soon. Take good care and stay safe,

CAMMAS HALL FARM WINS NATIONAL FARM RETAIL AWARD

Cammass Hall Farm has won PYO of the Year in a national award ceremony which celebrates the very best of the farm retail industry. Cammass Hall was announced as one of the winners across eight categories in the prestigious awards organized by the Farm Retail Association (FRA). The judges declared that Cammass Hall is “how a pick your own should be, professionally run with the layout of healthy, tidy and clean crops meticulously planned to be as efficient as possible, with a view to coping with future expansion”.

Cammass Hall's owner Jonathan Lukies said: “I am overjoyed to receive the FRA award for the best Pick Your Own Farm 2021. It is recognition of a huge amount of hard work and dedication by Cammass Hall's incredible team. A massive thank you to them, to all of our wonderful customers and of course the FRA!”

Cammass Hall Farm is based on the Essex/ Hertfordshire border, just outside the historic village of Hatfield Broad Oak.



Paddy McKeown





WALDEN
Sweeps

- ◆ Services offered include:
- ◆ Chimney and Flue Sweeping
- ◆ Wood Burning Stoves
- ◆ Open Fires
- ◆ Aga/Rayburn
- ◆ Bird Nest Removal
- ◆ CCTV Examinations

t: 01799 599981
m: 07956 099788
e: paddy@waldensweeps.myzen.co.uk

WWW.WALDENCHIMNEYSWEEPS.CO.UK

CHIROPODIST & PODIATRIST

Bishop's Stortford

- Orthotics
- Diabetic Foot Care
- Saturday Clinics
- Routine Treatment

R. Handford & Colleagues
H.C. P.C Registered

Bishop's Stortford - 16 Hockerill
Street

01279 652249

www.feet.org.uk

JOHN COLEBY

Experienced Interior and Exterior Decorator

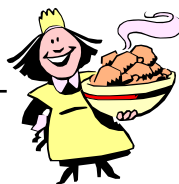
For a friendly, reliable service please telephone
01279 815510 or 0793 9070818
for a free estimate

FROM THE PARISH REGISTERS

No notices this month.

COOKERY CORNER

By Sue Johnson ☎ 812704



Here's a delicious loaf cake that will bring a burst of sunshine to any occasion. An alternative Easter bake perhaps.

LIME, COCONUT AND GINGER CAKE (serves 8-10)

- | | |
|--------------------------------------|------------------------|
| 6oz (175g) unsalted butter, softened | 3 eggs, beaten |
| 6oz (175g) golden caster sugar | 4oz (110g) plain flour |
| 3oz (75g) desiccated coconut | 4oz (110g) icing sugar |
| 1 teaspoon baking powder | Coconut chips |
- 5 small limes, grated zest of 4, zest strands of 1 and juice of all
- 3 balls stem ginger, finely chopped, plus 2 tablespoons stem ginger syrup

Line a 2lb (900g) loaf tin with baking parchment making sure the paper comes up higher than the sides. Preheat the oven to 180°C/160°C fan/Gas Mark 4.

Beat the butter and sugar together until light and fluffy, then beat in the grated lime zest. Gradually add the eggs with a little of the flour and beat well. Fold in the remaining flour along with the desiccated coconut, baking powder, stem ginger, stem ginger syrup, 2 tablespoons lime juice and a pinch of fine salt.

Spoon the mixture into the prepared loaf tin, levelling out the top. Bake for 50 minutes to 1 hour, covering with foil after 25 minutes if browning too quickly, until risen, golden and a skewer inserted into the middle of the cake comes out clean.

Set aside 2 tablespoons lime juice. Mix all the remaining juice with 1 tablespoon icing sugar. When the cake is baked, prick the top all over with a skewer, carefully pour over the drizzle. Leave to cool in the tin for 10 minutes, then transfer to a wire rack. When cool, sift the remaining icing sugar into a bowl. Stir in the reserved 2 tablespoons lime juice to form a thick icing. Spread or trickle over the top of the cake, allowing some to run down the sides. Scatter over the coconut chips and lime zest strands.

CHEF'S TIPS:

If the limes are large, four will be plenty. Salted butter is fine to use, but don't add any salt to the cake mix. This cake freezes well - suggest individual slices, removed from the freezer at lunchtime, ready for your afternoon tea treat.

Editorial Information

Articles

The **last day** for editors to receive articles, advertising and letters, which must contain the author's name and address (which may be withheld), is **the 12th of each month**.

Articles should ideally consist of a half page of A5 or a full page of A5. Articles over these sizes or letters containing more than 500 words may be edited depending on space.

Copy submitted after the 12th may not be accepted but will, if deemed appropriate, be held over to the next month. We are happy to receive handwritten articles that ideally should reach us earlier than the 12th to allow for scanning etc.

Dates for the Diary must include date, event, venue and time.

Please submit all articles, adverts, letters and queries to the editorial team at: elsenhamnews@hotmail.co.uk

General Notes

Whilst every effort is made to ensure that information is correct, the editorial team cannot be held responsible for any inconvenience caused through errors or omissions.

The views expressed within this magazine are not necessarily the views of the editorial team or Elsenham Community Association (ECA).

The editors and the ECA can accept no responsibility for the goods or services advertised in the magazine. Advertisements are included in good faith. The editors reserve the right to allow replies to letters/articles to be made in the same edition when appropriate.

The editors' decision is final.

Wanted/For Sale items: village residents may submit details of items wanted or for sale at no charge. These will be included in the next available magazine subject to space and acceptance by the editors.

Subscriptions

Elsenham News is available by email (on a pdf) at no charge, or through the post at a cost of £13 per annum. Contact Sarah, see details below.

Advertising

The costs are as follows:

	Single Insertion	Annual Cost (11 issues)
Half Page	£20	£190
Quarter Page	£10	£100
Inside Page	£50	n/a
Back Page	£75	n/a

Village organisations attract reduced rates, £5 for ¼ page. Half and full-page adverts attract full rates.

To place an advertisement:

For any queries please contact us. Please send your advert as Word or Publisher via email to elsenhamnews@hotmail.co.uk

Once your advert has been approved and you are happy with it, you will be sent an invoice, which should be paid by BACS.

Flyers

It costs £50 to insert an advertising flyer into the magazine. You must let us know by the deadline of the 12th. You must also provide the flyers.

Editorial Team

Sarah Alder	817660
Marion Giles-Donovan	812763
Heather Baxter	812924

ECA Website

www.ElsenhamCommunityAssociation.org.uk

If you respond to one of the adverts in the magazine, please tell the advertiser that you found them in *Elsenham News*.



UPCOMING EVENTS

**6 May - elections: Essex County Council and Police, Fire and
Crime Commissioner**

Saturday 26 June - Village Fete - 1-4pm

Saturday, 21 August, 3pm – Elsenham Flower Show

VILLAGE CONTACTS

Airport Roadside Parking		0800 731 2385
Beavers	Jackie Weston	816282
Bowls Club	Jean Platt	816151
Brownies	Jennifer Jarvis	814434
Church Office (Old Frank's, High St, Elsenham)	Anna Hicks	814285
County Councillor (Stansted)	Ray Gooding	813103
Cricket Club	David Brown	831011
The Crown pub	info@thecrown.info	814444
Cub Scouts	Linda Gleeson	850504
Cycling Club (Victoria CC)	Doug Yareham	07884 040892
Elsenham Community Association (ECA)	www.ElsenhamCommunityAssociation.org.uk	
ECA (Chairman)	Allan Hathaway	813385
ECA (Secretary)	Moyra Jackson	647351
Elsenham Surgery	www.elsenhamsurgery.nhs.uk	814730
Elsenham C of E Primary School	Linda Reid, Headteacher	813198
Elsenham Church PCC Secretary	David Hill	812397
Elsenham Rights of Way website	www.e-voice.org.uk/erowos/	
Friends of Elsenham School (FOES)	Gemma Mills	07745 036066
Guides elsenhamguides@gmail.com	Gemma Lewis	07792 572423
Henham & District Garden Society	Moyra Jackson	647351
History Society	Mike Rea evhs12@hotmail.co.uk	813634
Member of Parliament	Kemi Badenoch	0207 219 1943
Memorial Hall Bookings	Cheryl Rae	817834
Neighbourhood Watch Co-ordinator	Frances Lambert	07771 728332
	franceslambertnhw@btinternet.com	
Parish Clerk - Louise Johnson	louise.epc@gmail.com	07456 791727
Elsenham Parish Council Website	https://elsenham-pc.gov.uk/	
Police		101
Post Office		812175
Rainbows	Petrina Lees	816675
St Mary's Fabric Fund	Elizabeth Barker	813543
Tennis Club	Petra Studholme	814667
Tots & Toddlers	Trudi Marsh	899864
Uttlesford District Councillors	Petrina Lees	816675
(for Elsenham & Henham)	Garry LeCount	07836 346717
Village Hall Bookings	Annie Gleeson	07809 490731
Village Hall email address	elsenhamvillagehall@gmail.com	
Women's Institute	Gill Hathaway	813385
WI website	www.elsenhamwi.co.uk	
Youth Football Club (Chairman)	Paul Jarvis	814434

If you would like your village organisation contact to appear regularly in the magazine, please contact one of the editors, see opposite for details.



Clifford's

Country Grocers and Farm Shop

Fabulous Quality at Fair Prices

Fresh Fruit & Vegetables

Meats & Poultry

Dairy

Breads, Pastries & Cakes

Cheeses & Deli Range

Beers, Wines & Spirits

General Grocery

Vegan & Free From Ranges

Opening Times | Mon to Sat 08.30 to 5.30 | Sun 10.00 to 16.00

www.cliffords.info



The Barn, Pledgdon Hall,
Nr Henham, CM22 6BJ
Telephone: 01992 676710

orders@cliffords.co.uk

 [Facebook@Clifford's](https://www.facebook.com/Clifford's)



Pig Sty Tea Room

Pig Sty Tea Room | Mon to Sat 08.30 to 5.30 | Sun 10.00 to 16.00
Kitchen closed Tuesdays except for Hot Drinks and Cake.