

# Elsenham News



STAY HOME

SAVE LIVES

April 2020

[elsenhamsnews@hotmail.co.uk](mailto:elsenhamsnews@hotmail.co.uk)

75p where sold



Please note that following government advice regarding Covid-19, all regular activities that would normally take place in the Memorial Hall, playing field or the Village Hall have been cancelled for  
**April and May.**  
Some June dates still to be decided.

**The following specific events have been cancelled:**

- April 4 Litter picking day
- April 4 Elsenham Tennis Club Quiz Night
- April 7 Henham and District Garden Club Spring Show; May outing to Perrywoods and 2 June meeting
- April 10 Good Friday Ramble
- April 23 Annual Parish Meeting
- May 16 Annual Plant Sale
- June 6 Village Fete

**The following groups or activities** Zumba  
**are suspended until further notice:**

Beavers  
Brownies  
Community Choir  
Cubs  
Football  
Guides  
Health Walk  
Kick Boxing  
Little Fishes  
Life Drawing  
Line Dance  
Nordic Walking  
Rainbows  
Shape to the beat  
Slimming World  
Tots & Toddlers  
Yoga

**General cancellations include:**

All Bowls & Social Club events  
All church services and special events  
Church Lunch Club  
Elsenham & Stansted Hall Cricket Club training & fixtures  
Hatfield Forest Easter holiday events  
Mobile library visits  
Parish Council meetings  
Tots and Toddlers  
U3A events  
Village Café, tea, coffee and lunch  
WI events

Daisy May's Farm is closed to visitors

The Crown is closed to visitors



## Changes for the magazine

In these difficult times we hope everyone stays as well as they possibly can, physically and mentally. There is support available through the **Elsenham Good Neighbours Network**, see p5. You can ask for help if you need it or volunteer to help others if you are able to do so. Set up by our District Councillor and the ECA, it has been running successfully for a couple of weeks.

We were hoping to get this magazine printed and popped through your door but the announcement and instructions from Boris Johnson altered our plans. However, we would like to give a big thank you to our volunteer deliverers, who had been ready and willing to do their duty.

However, we had already decided that a printed magazine wouldn't be feasible for May and June. We will produce the magazine and make it available in PDF format only. It will be available via the Elsenham & Henham Newsline on Facebook and the Elsenham Community Association website. We will also email it to anyone who requests it from us. This is not ideal but it reduces the amount of contact and therefore reduces the risk while still providing some updates and information.

To all our contributors, please send in your articles for the May magazine, as usual, by 12 April. If you would usually be updating us on activities and there haven't been any perhaps you could share how your group has been coping. Perhaps you have been having virtual meetings?

Most village activities have been cancelled and we have attempted to summarise those on the opposite page. Village contacts are at the back of the magazine if you want to speak with the lead contact for that group.

If you have anything you would like to contribute – letters, articles, photos – please get it touch, [elsenhamsnews@hotmail.co.uk](mailto:elsenhamsnews@hotmail.co.uk), it would be great to hear from you.

Stay well  
*The Editors*

### Regular features

Book Review	45	Natural Outlook	43
Bowls & Social Club	48	Parish Council	9
Church Notice	28	Ray's Reflections	41
Cookery Corner	49	Tennis Club	47
Cricket Club	48	U3A	39
Development Developments	17	Women's Institute	21
History Society	33		

smnailsandlashes



Sophie May - Nail and  
Lash Technician



Home Based  
salon

Monday's - first two of each month. 11am - 4pm  
Fridays 11am - 6.30pm  
Saturdays 11am - 4pm  
Message via Facebook or Instagram to book in

FULLY  
QUALIFIED  
AND  
INSURED



TREATMENTS  
INCLUDE ACRYLIC  
EXTENSIONS, GEL  
POLISH, LASH LIFT  
AND TINT AND  
PEDICURES



BEAUTIFUL,  
RELAXING  
ENVIRONMENT

KINGSWOOD PLACE  
ELSENHAM  
CM22 6GX



# Naomi Gardening & Design

*Creating outdoor spaces for living*



Garden Maintenance & advice



Garden design & Consultation



Bespoke planting designs

Call for a free estimate

M: 07778 620576

E: [Naomi@NaomiGardenDesign.co.uk](mailto:Naomi@NaomiGardenDesign.co.uk)

W: [www.NaomiGardeningandDesign.co.uk](http://www.NaomiGardeningandDesign.co.uk)

*Trained at Capel Manor College*



**BARLEY GROVE**  
FINANCIAL SOLUTIONS LIMITED

- \* Annual Accounts/Book-keeping
- \* Payroll
- \* Corporate Tax returns
- \* Self-Assessment Tax
- \* VAT Returns
- \* New Business Set up
- \* IR 35 advice
- \* Construction Industry Scheme (CIS)
- \* Making Tax Digital Advice

**A PROFESSIONAL AND TAILORED SERVICE TO MEET YOUR PERSONAL  
OR COMPANY NEEDS**

**LOCAL COMPANY**

**CONTACT US NOW FOR AN INFORMAL DISCUSSION**

**Tel : 0330 133 0246**

Email: [info@barleygrove.co.uk](mailto:info@barleygrove.co.uk)

Website: [www.barleygrove.co.uk](http://www.barleygrove.co.uk)



# **Elsenham Good Neighbours Network**

**If you are self-isolating or working on the front line, we are happy to help and try to ease your isolation**



**Each area of Elsenham now has an EGNN team of lovely volunteers who will be happy to assist.**

✉ [elsenhambtinternet.com](mailto:elsenhambtinternet.com) (subject EGNN)  
or contact Cllr Petrina Lees on ☎ 07713 074656  
or Allan Hathaway on ☎ 07811 386027  
to be put in contact with your local team.

Due to the contagious nature of the virus, we cannot pop in for a chat, and all deliveries/collections can only be left on the doorstep.



**Golf  
World  
Stansted**

**FOOTGOLF | BEGINNER COURSE  
TOPTRACER DRIVING RANGE & MORE!**

# 1066 ADVENTURE GOLF *Everyone Welcome!*

Golf World Stansted, Hall Road, Nr Stansted Airport, Essex  
CM22 6FL | 01279 812 865 | leanne@golfworldstansted.co.uk  
www.golfworldstansted.co.uk



**Simplylawns**

Lawn Treatment Service

### Fed up with moss and weeds?

- I offer:
- Regular lawn feeds
  - Weed treatment
  - Moss treatment
  - Aeration
  - Scarification

CALL ANDREW NOW FOR A FREE LAWN SURVEY  
on 07791 128399 or visit my website

[www.simplylawns.co.uk](http://www.simplylawns.co.uk)

Local Business. Friendly, professional service

## Taylor Computer Services (Stansted)

On-site Computer Maintenance/Repairs

DON'T BE RESTRICTED TO OFFICE HOURS, I CAN VISIT YOUR HOME OR OFFICE  
DURING THE DAY, EVENINGS OR WEEKENDS AT A TIME TO SUIT YOU.

Email and Broadband Setup, Data Transfers/Data Recovery, Hardware & Software  
Installation, Virus & Spyware Removal & Protection, New PC Setup & Training

Call Derrick on 01279 816418 ~ 07926 289749  
Email: [Info@tcsstansted.co.uk](mailto:Info@tcsstansted.co.uk)

## COVID-19

### Changes to our advice service from 18 March 2020



citizens  
advice

To protect the health and wellbeing of our clients, volunteers and staff, we will be restricting our advice service to telephone support from 18 March until further notice. Call us on **01799 618840** or email [bureau@uttlesfordcab.cabnet.org.uk](mailto:bureau@uttlesfordcab.cabnet.org.uk) and leave a message clearly stating your name, date of birth, postcode, email address & telephone number. If you are only available on certain days or times please tell us.

We plan to check our phones every working day and will come back to you as soon as we can, but please bear with us, as with limited resources, we may not be able to contact you as quickly as we would like to.

- For online advice - including advice relating to COVID-19 - please go to [www.citizensadvice.org.uk](http://www.citizensadvice.org.uk)
- For urgent matters relating to housing, speak to **Uttlesford District Council** on **01799 510510**.
- If you are worried about debt - speak to your creditors and tell them that you are seeking advice.
- For urgent court matters call or email the Court.
- For urgent advice on employment issues, ACAS can help, [www.acas.org.uk](http://www.acas.org.uk) or call 0800 123 1100.

Visit [www.uttlesfordfrontline.org.uk](http://www.uttlesfordfrontline.org.uk) for information about local support, to self-refer to local health and wellbeing services or to **download factsheets** giving details of:

- **Local support for anyone housebound or self-isolating**
- **Financial, employment & consumer issues relating to COVID-19**

If you don't have internet access or know someone that can print this information for you, call us and we can post you a copy.

We will be recording any information you provide in our client management system. For details on how we use your data, please see our privacy policy on [www.uttlesfordcab.org.uk](http://www.uttlesfordcab.org.uk) or speak to one of our volunteers when they call back.

**Cammashall**  
 Fruit Farm • Tea Room • Farm Shop

**Easter**  
 at Cammas Hall Farm

Friday 12th April 10am - 4pm  
 Saturday 13th April 10am - 4pm  
 Sunday 19th April 9am - 4.30pm

**Cancelled until further notice**

Join us at the farm for an Easter Eggs-travaganza!

Easter Egg Trail • Easter Egg Colouring • Easter Arts & Crafts • Face Painting • Tasty Easter Treats

Additional charges apply for our Easter activities.

Please visit our website event listings for details of all of our Easter activities including animal shows, Easter basket workshop, craft activities, Spring workshop and pottery decoration.

**Advanced booking required (subject to availability).**  
 Please visit [cammashall.co.uk/events](http://cammashall.co.uk/events) to book your place.

Cammashall Farm, Noodham Green, Hatfield Broad Oak, Near Bishop's Stortford, Herts, CM22 7TF [cammashall.co.uk](http://cammashall.co.uk)

*Bobby's  
 Construction  
 Services Ltd.*



Specialised joinery and carpentry, wood flooring, painting and decorating, internal & external, tiling, kitchen, bathroom, decking, paving, electrical work

Contact us on: 01279 957770 or 07961 546929  
[bobbysem@hotmail.co.uk](mailto:bobbysem@hotmail.co.uk)





# ELSENHAM PARISH COUNCIL 2 MARCH 2020

By Louise Johnson, Clerk. ✉ [louise.epc@gmail.com](mailto:louise.epc@gmail.com) ☎ 07456 791727



Elsenham Parish Council received a letter from the head of Uttlesford District Council, Cllr. John Lodge. The letter explained the District Council intentions now that the Inspectors have rejected their proposed Local Plan. As the letter had only been circulated to Town and Parish Councillors, it has now been placed on the Parish Council's website for everyone to view.

Elsenham and Ugley Parish Councils are holding a joint meeting with the developer Gladman. The meeting was to be held on Tuesday 31 March 2020 but has now been postponed. Gladman have submitted plans for up to 220 dwellings on land north of Bedwell Road. Although the development is not strictly in Elsenham, it will affect the village, with more traffic, more commuters, more people using the doctor's surgery, primary school and shops.

The Fairfield appeal will now take 7 days (it was previously 4), starting the 28 April 2020.

Essex County Council (ECC) have set their 2020/21 budget at £992 million. This relates to a council tax increase of 1.99% plus a 2% increase for social care. The budget plans also include a £1 million commitment to helping families that are just getting by and who may need extra support, especially through school holiday periods. £5 million has been allocated to enable action on climate change, £500,000 is allocated to help the police tackle the county drug lines.

The annual village litter picking day on Saturday 4 April 2020 has been cancelled.

The village should be acquiring funds to build a new Community Hall on the Kingswood Place development. The funds are to come from Section 106 monies from three developers, Crest Nicholson, David Wilson Homes and Bovis Homes. But despite many requests, Uttlesford have not informed the Parish Council how much the total funds are or when the funding would be available, and they have not even confirmed that Bovis Homes have agreed to make a contribution. The other problem is that there are ramson strips around the playing field owned by Crest Nicholson Developers and therefore there is no legal access onto the new community hall site. After two years of asking Uttlesford District Council to sort this out, the District Council have assured the Parish Council this will be resolved by 31 March 2020.

The Annual Parish meeting on 23 April 2020 has been cancelled.

The Gladman meeting and the Fairfield appeal have now been cancelled.

Please look at PC website for updates on future meeting



The Executives Choice Chauffeur Company providing clients with premium transport at affordable prices. Airports, sporting events, theatre trips etc.

Corporate accounts welcomed.  
7 Seater available

To discuss your requirements

Contact Graham Anderson: [graham@execschoice.com](mailto:graham@execschoice.com)

Phone 07481 494988

[www.execschoice.com](http://www.execschoice.com)

## **D BONNEY & SONS MANUDEN MOTOR VEHICLE ENGINEERS**

MOT TESTING

ALL MAKES OF VEHICLES SERVICED INCLUDING FOUR WHEEL  
DRIVES

TRW BRAKE CENTRE

DIAGNOSTIC AND FAULT FINDING

WELDING AND CHASSIS REPAIRS

SELECTION OF USED CARS

CALOR GAS STOCKIST

WE HELP YOU THE MOTORIST WITH A CHEAPER LABOUR RATE  
GUARANTEED WORKMANSHIP  
FREE COLLECTION AND DELIVERY IN LOCAL AREA

**PLEASE RING: MALC, NEIL OR CRAIG**

**☎ 01279 813315 OR ☎ 01279 815946**

# DISTRICT COUNCILLORS' REPORT

## MARCH 2020

By Cllr Lees and Cllr LeCount

✉ [Cllrlecount@uttlesford.gov.uk](mailto:Cllrlecount@uttlesford.gov.uk)

✉ [Cllrlees@uttlesford.gov.uk](mailto:Cllrlees@uttlesford.gov.uk)

☎ 07836 346717

☎ 816675



A Balanced Budget has been set.

We believe it is unfair to put all of the financial burden on local taxpayers – residents have already paid enough for failures of the local plan. Because of this, the average Uttlesford District Council (UDC) tax increase for 2020/21 will only be £5 a year, which is 1.4p a day. This is a 10th of the £50 increase of Essex County Council's (ECC) precept. Instead we are changing how the council invests to generate a greater, but low risk, income stream. The budget supports building a £300 million commercial investment portfolio to make the council financially self-sufficient and therefore immune from never-ending government cuts.

We have also increased the budget for Voluntary Organization of Support Grants and have allocated £330,000.

We received presentations from 15 voluntary bodies, they evidenced both their work and their considerable need for support of disadvantaged members of our community - young, old, poor, those with medical problems or those that just need a little help. The largest recipient remains the Citizens Advice Bureau, Saffron Walden and Bishops Stortford. We were impressed by the commitment, perseverance, and compassion of the folk requesting funding to help towards their project. It was moving and a little humbling to listen to those who are helping our residents have better lives.

We have allocated our Ward Initiatives Fund, within the ward, ranging from help purchasing a disabled toilet, school initiatives, community lunch launch, scouting, health, flowers and information leaflets.

Please contact us if you have any village issues.

### **GARDEN HINT** *By Sue Johnson*

Repair bumps and hollows on lawns by peeling back turf and adding or removing soil.



**CHIROPODIST & PODIATRIST**

**Bishop's Stortford**

- Orthotics
- Diabetic Foot Care
- Saturday Clinics
- Routine Treatment

**R. Handford & Colleagues**  
H.C. P.C Registered

Bishop's Stortford - 16 Hockerill  
Street

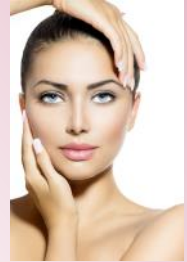
**01279 652249**

[www.feet.org.uk](http://www.feet.org.uk)

*The Beauty Shack Elsenham*

07703 784466 / 01279 497236

- \* Waxing
- \* Facials
- \* Massage
- \* Nails
- \* Tints
- \* Spray Tans
- \* Lash Extensions
- \* Lash Lift
- \* Occasion Hair and Makeup



Vouchers Available

**GLYNN'S  
CHIMNEY SWEEPS**

Est. 1995



**VACUUM AND  
BRUSH**

**NACS MEMBERS  
HETAS APPROVED**

COMPETITIVELY PRICED

**01279 424983**

[www.glynnschimneysweeps.com](http://www.glynnschimneysweeps.com)



**DECORATING SERVICES  
ALL ASPECTS OF DIY**

NO JOB TOO SMALL

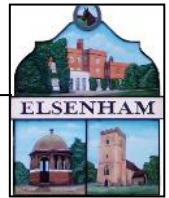
For a friendly reliable service  
Just Ask.....

**GARY KING**

Home : 01279 850001

Mobile : 07951 452602

[g.king962@btinternet.com](mailto:g.king962@btinternet.com)



Elsenham Community Association (ECA) held two Annual General Meetings on 12 March 2020. The first meeting officially closed the charity 302363 (which had been in existence for 50 years). The second meeting formalised the new Charitable Incorporated Organisation 1186436 - still called Elsenham Community Association.

There was a very good turnout and most of the organisations that regularly hire the Memorial Hall had a representative present.

Village organisations can nominate a Trustee of the charity & other Trustees are representatives of the village.

Residents may come to any of our General Meetings and join in with the meeting and dates are listed in the diary.

The ECA also organises the Elsenham Village Fete – Saturday 6 June 2020 on the playing field and the Santa event Saturday 5 December 2020 at the Village Hall (school).

The ECA is run by the village for the village, we look forward to seeing you at meetings or using the Memorial Hall.

Please see our website for village diary and local links:

 [elsenhamcommunityassociation.org.uk](http://elsenhamcommunityassociation.org.uk)  
 [elsenhamCA@btinternet.com](mailto:elsenhamCA@btinternet.com)

**Please note that due to Covid-19 and government advice, the Memorial Hall is closed until further notice**



Elsenham Rights of Way  
& Open Spaces Committee

**Good Friday Ramble**

**Please note that due to Covid-19 and government advice, the Good Friday Ramble has been cancelled.** The government is recommending daily exercise so you could still follow our footpaths using social distancing guidelines. Visit the ECA website or email: [erowos@btopenworld.com](mailto:erowos@btopenworld.com)

## Christine's Will Writing Limited

'this firm complies with the IPW code of practice'



**Wills, Will Trusts, Lasting Power of Attorney,  
Funeral Plans, Estate Administration  
and Safe Document Storage**

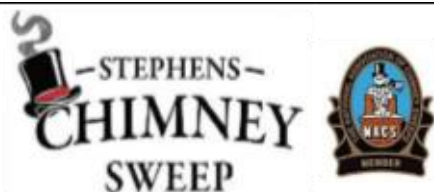
**Personal, confidential service in the comfort  
of your own home, at a time that suits you**

Single Wills from £150 \* Joint Mirror Wills from £200  
LPA's £300 each + Court Fees \* NO VAT PAYABLE

**01763 848555/07703 258555**

Christine Grisbrooke MIPW  
chris@christineswillwriting.co.uk

**www.christineswillwriting.co.uk**



*Insurance Certificate supplied - Fully  
Insured - Free Smoke Test*

Open Fires - Multi Fuel Stoves -  
Aga - Rayburn - Gas - Oil

**CCTV Surveys - Bird Nest Removal  
Local Business**

**Tel: 0800 112 3600**

**Mob: 07918 708626**

**www.stephenschimneysweep.co.uk**

# Mat Duxbury

## PAINTING

**Professional Interior and Exterior Painting Specialist**

**References available on request**

**20 Years' experience**

**Fully Insured**

**NVQ Qualified and Health and Safety Certified**

**Local, reliable and friendly service guaranteed**

For a free estimate please contact Mat on  07810 250426 or  
email  [mat@duxburypainting.co.uk](mailto:mat@duxburypainting.co.uk)

**ELSENHAM**



# NEIGHBOURHOOD WATCH

By Frances Lambert ✉franceslambertnhw@btinternet.com



Neighbourhood Watch is relaunching in Elsenham. We can now send directly to your email address the latest crime figures from the Police and Neighbourhood Watch, so you can see what crime is happening in our area and the surrounding district,. We also provide advice and suggestions from how to keep your home safe and secure, to recognising scams and avoiding rogue traders.

When a burglar walks down a road looking at the houses, they will always look for the easiest option. To help to make your property a bit safer here are a few tips.

1. Make it as difficult for the thief as possible by removing any climbing aids ie wheelie bins and ladders. A wheelie bin by your fence or gate makes it a lot easier for them to climb over it.
2. Make it difficult for the thief by securing gates when possible, and keep wheel barrows locked away.
3. Make it more difficult for the thief; by always keeping your sheds and outbuildings secure with good locks. It will add insult to injury if they have used your tools and ladders it get in to your property.
4. Maximise surveillance by sympathetically cutting back shrubs and trees where possible so there are no tall hedges for them to hide behind.
5. Ask the neighbours to watch over each other's property and also report any suspicious activity while it is happening.
6. Illusion of occupancy – things like a light and radio left on inside when you are out.
7. Consider planting prickly shrubs at possible climb points and to reinforce boundaries to deter the thief.
8. Consider installing CCTV and if you have this security flaunt it. Ensure you have clear signage displayed ;if a thief thinks he could be on camera he will move on.

Previous Neighbourhood Watch members will already have received our first report, but if you are a new resident to the village or were not on our mailing list before, please email me and I will add you.

If you have any information regarding incidents contact Essex Police on ☎ 101 or Crimestoppers anonymously on ☎ 0800 555 111.

# Binwash

We clean  
your  
wheelie  
bins!

Commercial & Domestic



Monthly Cleaning  
from just £4.50!

Professional equipment  
Same day as waste collection

[www.binwash-uk.com](http://www.binwash-uk.com)

**01799 529899**

[enquiries@binwash-uk.com](mailto:enquiries@binwash-uk.com)

# ANGLIA

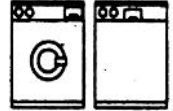
  
**ELECTRICS**

Established 1972

Domestic Appliance Repair Service

We offer Specialist Dishwasher,  
Refrigeration & Cooker Service, in addition  
to our long established and renowned  
Washing Machine Service

Our Engineers are  
Experienced and  
Trained to service  
most makes



**01279 658767**

Friendly Prompt Service

# S. PERRY CHAPEL END NURSERY

**SEED POTATOES ONION SETS & SHALLOTS**  
**POTTED SPRING BULBS, SUMMER FLOWERING BULBS**

Available  
Now

Available  
Now

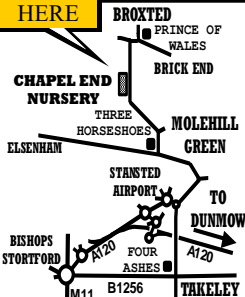
**TREES, ROSES, FRUIT BUSHES, HEDGING**

**SEED & CUTTING COMPOST**  
**20 Litre Bag**  
**£2.75 EACH 3 For £7.25**

**HORTICULTURAL GRIT**  
**COLOURED GRAVELS**  
**PEBBLES COBBLES**

**GODWINS**  
**MULTIPURPOSE COMPOST**  
**60 Litre Bag**  
**£4.50 EACH 3 For £11.50**

**WE ARE  
HERE**



**COUNTRY VALUE SEEDS ALL**  
**90p per PACKET**  
**Mr Fothergills Seeds**  
**Buy 5 Packs get Cheapest Free**

**OPEN 9am to 5pm**  
**MONDAY TO SATURDAY (CLOSED SUNDAYS)**  
**MOLEHILL GREEN ROAD**  
**BROXTED DUNMOW ESSEX CM6 2BW**  
**01279 850771**

[www.chapelendnurserysperry.co.uk](http://www.chapelendnurserysperry.co.uk)

**VEGETABLE PLANTS**  
**BASKET & TUB PLANTS**  
**ALPINES**  
**HERBACEOUS**  
**HERBS**  
**ROSES**  
**SHRUBS**  
**POND PLANTS**  
**AQUATIC COMPOST**  
**GODWINS COMPOST**  
**WILD BIRD FOOD**  
**SUNDRIES**



## DEVELOPMENT DEVELOPMENTS

By *Graham Mott* ☎ 812516 ✉ [motts@grahammott.plus.com](mailto:motts@grahammott.plus.com)



The question of air quality (otherwise AQ) on Grove Hill, Stansted, has joined road access as highly relevant to planning applications in Elsenham, particularly with respect to the Appeal by Fairfield concerning their plans to build 350 new homes between Elsenham and Henham. Uttlesford has instructed a highly qualified consultant, who has found that Fairfield's appraisal is deficient in nine different ways (just the nine). Fairfield has not responded at the time of writing. The Appeal is scheduled to last for seven days in Saffron Walden Town Hall, starting on 28 April. I don't know how it will take that much time, but a right old ding-dong over AQ can confidently be predicted.

There is also the application by Gladman for 220 houses off Bedwell Road. Uttlesford's Environmental Health Officer recommended refusal in December on the grounds of AQ impact. Gladman has revised parts of the application, reaching the predictable conclusion that the quality of the air is unimpeachable; indeed, you could imagine from the response that the benefits to health from living on a site with a motorway running along one side are such that Gladman must rank amongst the village's greatest benefactors.

There is a new consultation, with a deadline of 8 April. You can send in a representation if you wish - it does not need to refer to AQ - by emailing [planning@uttlesford.gov.uk](mailto:planning@uttlesford.gov.uk) and quoting reference UTT/19/2266. If you've commented already, there is nothing to stop you doing so again. You must include your name and address.

By way of contrast to Fairfield and Gladman, the applicants for 40 new dwellings off Rush Lane show no particular knowledge of Stansted in general or Grove Hill in particular. The Hearing into the Appeal against refusal of the application is due to be heard on 19 May. If you have already objected, Uttlesford District Council should have been in touch to say that your objections will be forwarded to the Inspectorate, and that you can make fresh comments if you wish by 10 April. Anyone can make comments, but they should be sent to the Inspectorate, not UDC.

The Rush Lane site was allocated in the Local Plan, and the case for approval has not been helped by the collapse of the Plan. The Inspectors recommended that UDC start again, rather than trying to bodge the Plan into acceptance. UDC's response was to think about it for a bit, and then appoint consultants to advise them what to do, with a decision promised by the end of March. The undertaking when the Inspectors' decision was first known, to inform local residents and communities 'every step of the way', has not happened; however, a letter from the Leader of the Council was sent to parish councils at the end of February and has been posted on the Parish Council website. It doesn't say much about the Plan, but it's a bit more than nothing, and there are dark utterances about re-engineering the planning function. Will heads roll? Time will tell.

# Options Hair Design and Hair Loss Clinic

An essential choice with a passion for hair

We welcome you with a complete in-depth consultation, whether this is for a change of style or colour or for more clinical advice on the health of your hair and scalp.

For clients visiting The Hair Loss Clinic we are able to offer a completely private consultation and treatment room away from the main salon. We offer proven treatments for hair loss and also provide a complete wig fitting and finishing service. We work closely with a leading UK Trichologist who holds regular clinics with our clients.

Our products are organic and formulated to enhance your hair health. Our dedicated stylists will work with you to achieve the look and feel that you want. Our salon has parking right outside and a warm welcome awaits you.

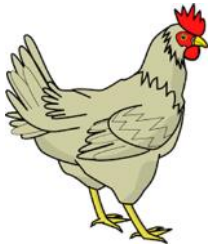
**Elsenham Salon 01279 812665**

Bookings not always necessary

[www.optionsalon.co.uk](http://www.optionsalon.co.uk)

Hair Loss Clients please call Ann on 07957 166436





**Daisy May's Farm**  
Hall Road, Elsenham, CM22 6DN

Please note that due to Covid-19 and government advice, Daisy May's farm is closed to visitors until further notice. We are in need of financial support to buy feed for our animals and if you could make donations, that would help us.

Many thanks.

**We always need help in so many ways, particularly when there is so much to do. To make donations, please get in touch, we would love to hear from you. Please contact ☎ 07747 787973 or take a look at our website 📄 [www.daisymaysfarm.org](http://www.daisymaysfarm.org) to find out more. Thank you so much.**



**ST MARY'S FABRIC FUND ELSENHAM**  
Registered Charity No 1052884  
By David Hill ☎ 812397



Our plans for 2020 are crystallizing....

Our Vintage Toy and Doll Display will be held in the Church over the weekend of June 20/21. We will be looking for exhibits to borrow so please go into your loft and search for those treasures. We also plan to run a refreshments tent. If you could lend us anything to display, or want more details, please contact Elizabeth ☎ 813543 or Dave ☎ 812397. We will also be looking for volunteers to help with stewarding and refreshments.

We will have our usual presence at the Village Fete in June and we are also planning a Harvest Festival Garden Party at the Church on Saturday 3 October. This will be a family fun occasion with games, refreshments etc. Whilst you have your diary out, don't forget the Christmas Tree Festival over the weekend of 5 and 6 December. It will come round soon enough!

I would like to give a very big thank you to Anne Fegan and Options for their very generous donation of £200 to the fund. Thanks also to all of you who supported the Beetle Drive which raised £220 (less expenses). All of this together with other monies raised through your support goes to help maintain and improve your beautiful early Norman church.



# Pike's Plumbing & Heating

Whether you're looking for a plumber or heating engineer, Pike's Plumbing & Heating can help.

If it's an emergency, simple problem or you're just thinking about a new boiler or bathroom give me a call – I'm available when you need me 24/7. Now's a good time to think about servicing your boiler too and make sure you're not left out in the cold! **No Call-Out Charges & Free Quotations**

**Tel: 07889 140035**

**Craig Pike**

**Email: info@pikesph.co.uk**



**Web: www.pikesph.co.uk**

- Extensions
- Barn conversions
- New Homes
- Loft conversions
- Planning Drawings
- Building Regulations
- Project Management



Local Architectural Design



Free initial consultation

t: 01799 540600

e: info@alundesign.com

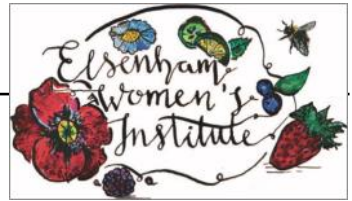
www.alundesign.com

Alun Design Consultancy, Neville House, Station Road,  
Wendens Ambo, Saffron Walden, Essex, CB11 4LB

alun
design
consultancy
architectural design
planning
project management
interior design

# ELSENHAM WOMEN'S INSTITUTE

By Moyra Jackson ☎ 647351



The saying (and I am not sure who said it) 'We live in interesting times' has never been more appropriate than it is today. Before I deal with special measures, first a round up of our activities since our last article.



Our last meeting was an interesting one. We had Carol James bring her collection of jewellery. Remember love beads? Pop-it necklaces? Carol had them all in her collection stretching from the 1930s and culminating with superb examples of 90s bling. The theme of the main part of the evening however was our annual 'Show the Love' – green hearts were everywhere showing our commitment to the Climate Coalition's objectives to raise awareness on the adverse effect we are having on this planet. Even a small change can make a difference.

The wonderful staff at Molton Brown has continued to welcome small groups of us for a tour around their factory. It's great to know that such a high quality product is being made on our doorstep. A photograph of one of the tours even made it onto the cover of the Essex WI's own magazine. Quite an achievement.

Our "Ladies Who Lunch' group was extremely well looked after when we went along to the Cock in Henham and had a lovely meal. Thanks to Mel and all the staff.

## **Important news. Our meetings in April and May will now not take place.**

In light of Government advice, despite hoping to keep our monthly meetings going, our committee has taken the decision to shut up shop temporarily. Our only concern is for the health and safety of our members. Although we will not be meeting, our activities regarding the welfare of our WI members and the wider community will not stop. We are making sure those of us who are able will help in any way we can. Please remember that this virus will not only affect physical health but the very nature of self-isolation or illness within families can have a dreadful effect on mental health. Please be assured – as always we are just a phone call away. We publish committee phone numbers on the back of our programme for a reason.

Stay safe and stay as well as you can. Acts of kindness have never been more important than now.

## Scrub And Shine

Herts & Essex  
leading carpet & upholstery  
cleaning specialists!

We're a fully qualified family only  
company and have been in the  
trade for over 16 years.

We offer competitive pricing with  
100% customer satisfaction  
guaranteed.

Call or email us today for a free  
quotation!

07545 394262  
07810 016272

[scrubnshine1@gmail.com](mailto:scrubnshine1@gmail.com)

## **NICK SHUTES PAINTING AND DECORATING LTD**

High quality interior and  
exterior redecoration  
Woodwork repairs and  
replacements  
Fascias, soffits and cladding

**01799 542385**  
**07885 778213**

[www.nickshutesdecorating.co.uk](http://www.nickshutesdecorating.co.uk)

## *Spellbrook Garden Design*

### DRIVEWAY & GARDEN DESIGN

- ✓ Decorative Walling and Fencing
- ✓ Patios & Paths
- ✓ Block paving, Tarmac and Graveling
- ✓ Decking
- ✓ Turfing, Garden design and build
- ✓ Stone cleaning

[spellbrookgardendesign.simdif.com](http://spellbrookgardendesign.simdif.com)

Tel: 07799 603089 / 01279 503936 / 0800 696 5257

Westwoods, London Rd, Spellbrook CM23 4AH



[Checkatrade.com](https://www.checkatrade.com)

[myBuilder.com](https://www.mybuilder.com)



*Paddy McKeown*



- ◆ Services offered include:
- ◆ Chimney and Flue Sweeping
- ◆ Wood Burning Stoves
- ◆ Open Fires
- ◆ Aga/Rayburn
- ◆ Bird Nest Removal
- ◆ CCTV Examinations

t: 01799 599981  
m: 07956 099788

e: [paddy@waldensweeps.myzen.co.uk](mailto:paddy@waldensweeps.myzen.co.uk)

[WWW.WALDENCHIMNEYSWEEPS.CO.UK](http://WWW.WALDENCHIMNEYSWEEPS.CO.UK)

# ELSENHAM C. OF E. PRIMARY SCHOOL

By Linda Reid, Headteacher



Despite a great deal of uncertainty in school as a result of the spread of the Coronavirus, school life has been going on very much as usual.

We celebrated World Book Day on Friday 6 March with the children and staff dressed as their favourite book characters. Everyone enjoyed a day filled with stories, role-play and a celebration of reading. Parents and other family members joined their children during the afternoon to share a story and talk about their exciting day at school.



Many competitions took place during the day including a competition, turning potatoes into their favourite book characters. There were some very creative ideas!

Our “Leaders in Learning” have been hard at work this term inspiring younger children to enjoy learning in a wide range of subjects. English Leaders ran a story writing competition while our Art Leaders challenged children to draw or paint their favourite book character with the winners receiving a book. Our Geography Leaders planned an afternoon for the whole school, to explore an area of geography in an inspiring and creative way. Year Six and Reception worked together to recreate extreme weathers. Year Six explored extreme weathers and natural disasters before helping the children in Reception to build weather-proof houses to withstand the extreme weather (buckets of water to represent torrential rain) and natural disasters (shaking the surface to represent an earthquake). A great time was had by all.

The role of Leader in Learning is a much sought after position in school and is a wonderful way to develop pupil voice and enthusing others in an area which interests them. Our current Leaders in Learning are doing a fantastic job and we are very proud of them all.



Double Glazed Units – **SAME DAY**

- Table Tops
- Shelves
- Emergency Glazing
- Replacement Misted Double Glazing
- Greenhouse Glass
- Cat and Dog Flaps Fitted
- Splash Backs – Any Colour
- Glass Cut To Size

**LOCAL COMPANY – GREAT PRICES – RELIABLE PROMPT**

**Elsenham – Great Dunmow – Bishops Stortford - Stansted**



# Elsenham Tots & Toddlers Group

Memorial Hall (playing fields)  
Wednesdays at 9.30am to 11.30am



Meet others -

make



Everyone welcome from  
toddlers up to 5  
grandparents,

mums-to-be, babies and  
years - with parents,  
carers etc

Just turn

up, stay and have a chat

The first week is free and then £2.50 per adult and 1 child  
50p per additional child

For more information  
Please contact Trudi ☎ 899864

We have a very safe and friendly environment  
in which to play and have fun



Assortment of toys - we are open to suggestions

**Cancelled until further notice**





## ST MARY'S CHURCH ELSENHAM

Vicar: Gary Townsend

The Vicarage, Carters Lane, Henham ☎ 850281

### Is Christianity merely a 'white, Western religion'?

In our part of the world, Christianity is often depicted as a white, western religion, which, through the old British Empire, has been forced on other people groups. While no-one would want to deny that wrongs have been done by western Christians in the past, there are many who heard of Jesus through Christian missionaries who, though glad to jettison the cultural baggage of the west, were nevertheless very happy to cherish and preserve the life-transforming message of Jesus and pass it on to others.

Jesus was Middle-Eastern and, despite pictures of Jesus in children's books, he was certainly not white! The evidence is that Jesus and the early Church crossed racial and cultural barriers in an astounding way. Jesus himself commanded his Jewish disciples to "go.. make disciples of all nations." (*Matthew 28v19*). In Jerusalem, after Jesus had risen and ascended to heaven, God's Spirit empowered his disciples to speak of Jesus to people from as far away as modern-day Iran, Iraq, Turkey, Egypt and Italy (*Acts 2:5-11*). When they returned to their home countries, they took back with them the glorious message of Jesus as both the risen Lord (of the whole world) and Christ (God's special chosen king).

Christianity entered Africa hundreds of years before white colonial missionaries arrived. A highly educated Ethiopian official became a Christian in the first century through meeting the apostle Philip and by the fourth century the Ethiopian Church was established

(even before the Christianisation of Rome). Christianity took root in Egypt in the first century and spread to other parts of North Africa. The church of South India goes back to the first century (probably through the apostle Thomas) and there were Christians in China in the eighth century AD.

The Christian writer, Rebecca McLaughlin quotes a black American Yale law professor Stephen Carter, "Around the globe the people most likely to be Christians are women of colour." He warns, "When you mock Christians, you're not mocking who you think you are." When Rebecca McLaughlin, raised in London, went to Romania to serve in an orphanage, she met a Romanian Christian girl, raised under Communism who embraced her saying "Sister! I am so happy there are Christians even in England!"

What I find so exciting and wonderful is that we are all created in God's image and for a relationship with our creator through his son, Jesus. When Jesus gave his life on the cross to bring us forgiveness, peace with God and an eternal life in fellowship with his heavenly Father, his sacrifice was not merely for white westerners but for folk from all over the globe, from many different countries and cultures and races. Christians can look forward to when Jesus returns and all who love him will be gathered into a "Great multitude that no one could number, from every nation, from all tribes and peoples and languages." (*Revelation 7v9*). Will you be with them?

God bless

*Rev Gary Tubbs (Associate Minister)*

# Bishop's Stortford - Stansted Airport

SERVICES  
**7•7A**

## MONDAYS TO SATURDAYS

from 29th August 2017

Service: 7 7 7 7A 7 7A 7 7A 7 7A 7 7A 7 7A 7 7A

Notes:

Bishop's Stortford, Interchange, Stop E ⇌	0600	0639	0815	0900	1030	1130	1245	1330	1500	1550	1715	1815	1930
B. Stortford, Herts & Essex Hosp Grounds	0608	0651	0827	0912	1038	1138	1253	1338	1512	1602	1727	1823	1938
B. Stortford, Dunmow Rd, opp Nags Head PH	0610	0653	0829	0914	1040	1140	1255	1340	1514	1604	1729	1825	1940
Birchanger, Bradley Common	0616	0659	0835	0920	1046	1146	1301	1346	1520	1610	1735	1831	1946
Benfield Grn, Pennington Ln, Long Croft	▼	▼	▼	0924	▼	1150	▼	1350	▼	1614	▼	1835	▼
Stansted Mountfitchet, Crossdalle Road (S)	▼	▼	▼	0926	▼	1152	▼	1352	▼	1616	▼	1837	▼
Stansted Mountfitchet, Clarence Road	▼	▼	▼	0928	▼	1154	▼	1354	▼	1618	▼	1839	▼
Stansted Mountfitchet, Chapel Hill (SE)	0622	0705	0841	0931	1052	1157	1307	1357	1526	1621	1741	1842	1952
S. Mountfitchet, Maitland Rd, St Mary's Drive	0626	0709	0845	0935	1056	1201	1311	1401	1530	1625	1745	1846	1956
Stansted Mountfitchet, Lower Street (NE)	0628	0711	0847	0937	1058	1203	1313	1403	1532	1627	1747	1848	1958
Elsenham, Station Road (N)	0633	0716	0852	0942	1103	1208	1318	1408	1537	1632	1752	1853	2003
Elsenham Railway Station ⇌	0634	0717	0853	0943	1104	1209	1319	1409	1538	1633	1753	1854	2004
Henham, Church Street, opp Church	0639	0722	0858	0948	1109	1214	1324	1414	1543	1638	1758	1859	2009
Henham, High Street, Woodend Green	0641	0724	0900	0950	1111	1216	1326	1416	1545	1640	1800	1901	2011
Henham, Mill Road, Vernon's Close	0643	0726	0902	0952	1113	1218	1328	1418	1547	1642	1802	1903	2013
Elsenham, Henham Rd, opp The Crown PH	0646	0729	0905	0955	1116	1221	1331	1421	1550	1645	1805	1906	2016
Elsenham, Hall Rd, DeSalis Hotel	0650	0733	0909	0959	1120	1225	1335	1425	1554	1649	1809	1910	2020
Molehill Green, Molehill Green Road	0652	0735	0911	1001	1122	1227	1337	1427	1556	1651	1811	1912	2022
Stansted Airport, Coach Station ⇌ ⚡	0657	0740	0916	1006	1127	1232	1342	1432	1601	1656	1816	1917	2027

# Stansted Airport - Bishop's Stortford

## MONDAYS TO SATURDAYS

from 29th August 2017

Service: 7 7 7A 7 7A 7 7A 7 7A 7 7A 7 7A 7 7A 7

Sch Notes:

Stansted Airport, Coach Stn, Bay 15 ⇌ ↕	0707	0849	0920	1020	1135	1245	1350	1440	1605	1705	1820
Molehill Green, opp Molehill Green Road	0712	0854	0925	1025	1140	1250	1355	1445	1610	1710	1825
Elsenham, Hall Rd, opp DeSalis Hotel	0714	0856	0927	1027	1142	1252	1357	1447	1612	1712	1827
Elsenham, Henham Rd, The Crown PH	0718	0900	0931	1031	1146	1256	1401	1451	1616	1716	1831
Henham, Mill Road, opp Vernon's Close	0721	0903	0934	1034	1149	1259	1404	1454	1619	1719	1834
Henham, High Street, Woodend Green	0723	0905	0936	1036	1151	1301	1406	1456	1621	1721	1836
Henham, Church Street, Church	0725	0907	0938	1038	1153	1303	1408	1458	1623	1723	1838
Elsenham Railway Station ⇌	0730	0912	0943	1043	1158	1308	1413	1503	1628	1728	1843
Elsenham, Station Road (S)	0731	0913	0944	1044	1159	1309	1414	1504	1629	1729	1844
Elsenham, Stanssted Road, opp Leigh Drive	▼ 0747	▼	▼	▼	▼	▼	▼	▼	▼	▼	▼
Stansted Mounfitchet, Lower Street (SW)	0736	0752	0918	1049	1204	1314	1419	1509	1634	1734	1849
S. Mounfitchet, Mailand Rd., St Mary's Drive	0738	0754	0920	1051	1206	1316	1421	1511	1636	1736	1851
Stansted Mounfitchet, Chapel Hill (NW)	0742	0758	0924	1055	1210	1320	1425	1515	1640	1740	1855
Benfield Grn, Pennington Ln, Long Craft	▼	▼	0927	▼	1058	▼	1323	▼	1518	▼	1743
Stansted Mounfitchet, Crossdale Road (S)	▼	▼	0929	▼	1100	▼	1325	▼	1520	▼	1745
Stansted Mounfitchet, Clarence Road	▼	▼	0931	▼	1102	▼	1327	▼	1522	▼	1747
Birchanger, opp Bradley Common	0748	0804	0934	1001	1105	1216	1330	1431	1525	1646	1750
Bishop's Stortford, Dunmow Rd, Shortcraft	▼	0820	▼	▼	▼	▼	▼	▼	▼	▼	▼
B. Stortford, Dunmow Rd, Nags Head PH	0753	0939	1006	1110	1221	1335	1436	1530	1651	1755	1906
B. Stortford, Herts & Essex Hosp Grounds	0755	0941	1008	1112	1223	1337	1438	1532	1653	1757	1908
Bishop's Stortford, Interchange ⇌	0803	0953	1016	1120	1231	1345	1446	1540	1705	1809	1916

NOTES: Sch - Monday to Friday Schooldays Only ⇌ - Near Railway Station

↔ - Interchange with Express Coaches

↕ - For the Airport

**SORRY - NO SERVICE ON SUNDAYS OR PUBLIC HOLIDAYS**

## A notice from the Vicar, Associate Minister and Church Wardens

Following strong advice from the Archbishops we regret to inform you that **all our church services have been suspended until further notice.**

Furthermore, at the direction of the Bishop of Chelmsford we are sorry that **churches are also closed to all visitors.** We encourage you to pray in your own homes.

This is in the interest of public health and a desire on the part of the church family across Henham, Elsenham and Ugley, to do our part to help curtail the spread of Coronavirus.

Please be assured that the church family is praying for our communities at this time and members are busying themselves as far as is permissible to assist in the care of those most vulnerable.

Food bank collection boxes are in the porch of each church and donations will still be collected and delivered to Bishop's Stortford Food bank.

### Easter Message



In this age of spin, fake news and misinformation, it's hard to know where the **truth** lies. When we browse our favourite news stream, check out Twitter, read a paper or watch the news on TV, we're increasingly less sure that what is being presented to us is actually **true**. This is especially the case with the outbreak of Coronavirus!

A lot of people see the Christian faith – in particular the resurrection of Jesus – like that. Fake news, concocted because people need something to believe.

There is significant **evidence** for the fact that Christians believe that Jesus is alive. In *1 Corinthians: 15 v 3-6*, the apostle Paul maintains the **undeniable truth** that Christ died on the cross for our sins, was buried and then rose again from the dead, exactly as all the Bible prophecies predicted. Jesus presented Himself alive to literally hundreds of people, some who were initially reluctant to believe.

The **good news** is that He is alive today and will save anyone who turns to him. He didn't die for nothing, He died for YOU! Writer and Bible teacher Michael Green says: "If the resurrection is false, you can dismiss Christianity. If it is true, the consequences are enormous". The **evidence** is compelling, and **a truth that is real, not fake**, and worth basing our lives on.

Sadly, we can't invite you to our services over Easter as they have had to be cancelled, but Gary Townsend (Vicar) and Gary Tubbs (Associate Minister) would be very happy to have a chat with you about this reassuring and life-changing news in these difficult times:

Gary Townsend: ☎ 850281 [gary.townsend@heuchurch.co.uk](mailto:gary.townsend@heuchurch.co.uk)

Gary Tubbs: ☎ 817698, [gary.tubbs@heuchurch.co.uk](mailto:gary.tubbs@heuchurch.co.uk)

**We wish you all a blessed and joyous Easter. Christ is Risen!**



One of the delights of a woodland walk on a sunny April day is the sweet scent wafting from the massed flowers of the English bluebell. As one of our best-loved wildflowers, with half of the world's population found in the UK, it's associated with ancient woodlands but can also occur at the base of long-established hedgerows.

The narrow glossy leaves and flower spikes are produced from deeply rooted bulbs supported by specialised symbiotic fungi. Usually a deep violet-blue, white or pink spikes sometimes occur. The flowers are narrow and tubular-bell shaped, with tips that curl backwards. They are arranged on one side of a drooping stem. After pollination by honeybees and other insects, many green capsules which will hold large numbers of ripe black seeds form. Seeds are shaken from the capsules by either breezes or animals.

The introduced and invasive Spanish bluebell has broader leaves. Its pale blue, unscented flowers are arranged around the upright stem and are more open, revealing blue pollen.

Encouragingly, recent research has found that the native species has a genetic advantage due to the sheer weight of numbers and greater fertility and so should continue to thrive.



Locations where it is possible to see carpets of bluebells include the Hertfordshire Way as it passes through Sidehill Wood and Mill Wood in Much Hadham and Howe Wood in Littlebury beside Strethall Road as it crosses over the M11 motorway.

Several walks described on our website pass through woodlands. Walk Number 4 is through a fine bluebell wood at Rickling, while the longer Walk Number 20 visits Mill Wood.

For details of woods or nature reserves: 🌐 [www.Uttlesford-Wildlife.org.uk](http://www.Uttlesford-Wildlife.org.uk)  
🌐 [www.hertswildlifetrust.org.uk](http://www.hertswildlifetrust.org.uk)

*The Hundred Parishes is 450 square miles of northwest Essex, northeast Hertfordshire and southern Cambridgeshire that is largely unspoilt and is richly endowed with many fine examples of agricultural and built heritage. The area has shared a common history which shaped and preserved its distinctive landscape of small and medium-sized farms linked by winding lanes and ancient rights of way to hamlets, villages and then to small market towns. For more information visit [www.hundredparishes.org.uk](http://www.hundredparishes.org.uk).*




**Cultivated Turf Supplies**

**ROTAVATING  
NEW LAWNS LAID  
ALL GARDEN WORK  
UNDERTAKEN**

**CALL FOR FREE QUOTATION**

 **01279 718555**

 **07930 188920**

6 Windmill Close  
Great Dunmow  
Essex CM6 3AX

## **Andrew Allen** *Heating Services*

**07973 688286**

**lunarpond@hotmail.co.uk**

- 'Gas Safe' registered
- Boiler and appliance servicing and breakdowns
- Plumbing and heating installation and maintenance
- Natural gas
- Landlord certificates

**01279 656 983 - 0800 587 2556**

Unit 1, Suite 1, Peek Business Centre, Woodside Road, Bishops Stortford, CM23 5RG

# **mediacom** AUDIO VISUAL. DATA. SECURITY

- Aerial Installations
- CCTV & Security Alarms
- Audio Visual Installations
- Wireless & Wired Networks
- TV Wall Mounting Services
- Sky Installations & Subscriptions
- Freesat Installations & Receivers
- Multiroom Music & TV Distribution
- Family Run Business



[www.mediacom.co.uk](http://www.mediacom.co.uk)

[info@mediacom.co.uk](mailto:info@mediacom.co.uk)

# ELSENHAM VILLAGE FETE 2020

By Elaine Terry ☎ 812363 or 07962 586825

---

SATURDAY 6 JUNE 2020 1pm — 4pm

## ELSENHAM VILLAGE



We regret to announce that due to the current Covid-19 situation, the fete has been cancelled to protect the health of our village. We are sorry that this has been necessary but 6 June would still have fallen in the isolation period for some villagers.

Hopefully, we will be able to move all of our plans to June 2021. So if you would like to get involved, then please do get in touch and join us in putting on this event for our wonderful village next year!

ALLASPECTSTREESERVICES.CO.UK



## All Aspects Tree Services

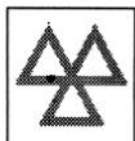
TREE SURGERY - STUMP GRINDING  
HEDGE CUTTING - FENCING

**01279 755545 07940 231964**

INFO@ALLASPECTSTREESERVICES.CO.UK

## **GARRETT'S** GARAGE SERVICES

42 Golds Business Park, Elsenham  
Bishop's Stortford, Herts CM22 6JX



- Mechanical Repairs
- Servicing
- Tyres
- Engine Tuning
- Computer Diagnosis
- Windscreen Repairs
- M.O.T.'s - Catalyst & Diesel Tested
- E.H.D.C. - Authorised Hackney Carriage Testers
- Batteries
- Exhausts

*MODERN WELL  
MAINTAINED  
WORKSHOP*

*ALL MAKES OF VEHICLE*

*\*FREE COLLECTION AND\*  
\*DELIVERY SERVICE\**

**TEL: 01279 647777 FAX 01279 817622**



# ELSENHAM VILLAGE HISTORY SOCIETY

By Mike Rea, Secretary ☎ 813634 ✉ evhs12@hotmail.co.uk

🌐 www.elsenham-history.co.uk

---



The meeting to mark our tenth birthday was a great success. The highlight of the meeting was the talk on the Elsenham Jam Factory from Ray Franklin. This was a reprise of the talk given by John Hurwitz (one-time Managing Director of the factory) in the early days of the society featuring much of the original material plus new bits of information from Ray's own research.

The original factory was set up by Sir Walter Gilbey in 1891 to give employment to his estate workers during the agricultural depression. The jam was produced in small thatched and corrugated iron roofed sheds near Gaunts End. It was made in open copper pans heated by steam which held around ninety pounds (40Kg) of jam.

On his travels to the Continent, Sir Walter had noticed the popularity of lavender oils and water and so he started growing lavender. To extract the oil the lavender was placed in a large cylindrical contraption with a fire in the base and a ladder up the side. Standing some ten feet (3m) high a worker would climb the ladder and drop the lavender into the top to be heated. After a while it was reported there would be a loud bang and a drop of lavender oil would drip from the tap at the bottom!

After Sir Walter's death in 1914, the factory was acquired by a Commander Carr who ran the company until 1959 when he sold it to Tony Blunt. During the Commander's time the emphasis changed and jam production was reduced in favour of fruit growing. Mr Blunt, a fruit farmer, reversed this decline, rationalising the fruit growing, retaining ten acres of strawberries outside the factory and some apple and pear orchards. Lavender was no longer produced because of the competition from France and the company concentrated on raising the quality and image of its jam. On 1 November 1969, the factory was destroyed by fire. Nevertheless, the factory was back in production within days to produce the Christmas orders.

Following the fire, the company decided to invest in a brand new modern factory and full production was resumed. In the 1970s there were considerable sales overseas and in 1976 Elsenham Quality Foods won a First prize at the prestigious International Foods Exhibition (SIAL) in Paris – the only British company to do so. Due to inheritance problems the company was sold in 1979 to James Borrough and new labelling and marketing was introduced. In 1987 Borrough was taken over by Whitbread who sold it to Smuckers who reduced prices and quality. This strategy didn't work and after more changes of ownership and a move to Wales, led to the eventual demise of the brand in the early 2000s.

My thanks to Ray Franklin and Elsenham – The First 1000 Years for the above .

Our next meeting will be held on Wednesday 10 June 2020. Our speaker will be Anthea Hawden from Raking Light who will be talking about "Church Graffiti" taking examples from our own St Mary's as well as surrounding churches. All are welcome and visitors are charged just £2. We look forward to seeing you there.



## Private Piano Tutor

Evelyn Chong  
Bachelor of Music (Honours)

Classical  
Theory  
to intermediate

Accepting bookings for Wednesdays & Thursdays

evelyn.chong@hotmail.co.uk



**Cancelled until further notice**

# BMH

## WINDOW CLEANING & GARDEN SERVICES

Window Cleaning

Gutter Cleaning

Commercial Window Cleaning

Garden Services

Excellent Rates

Professional & Trustworthy

Fully Insured

References on request

**07852 722139**

*"Get rid of the grime with a Tony shine"*

## Bobby's Gardening Services Ltd.

We provide high quality workmanship at reasonable prices, letting our work speak for itself. Our work includes both landscaping design and garden maintenance. Local friendly business. Visit our website below. We are also on checkatrade.com.

Our services include: full garden design, decking, fences, new lawns, patio, artificial grass, garden walls, raised beds, sheds, bespoke seating, fire pit, water features, planting, living walls, stone walls plus garden maintenance.

**Contact us on: 01279 957770 or 07961 546929**

E: [bobbysgardeningervices@yahoo.co.uk](mailto:bobbysgardeningervices@yahoo.co.uk)

<http://www.bobbysgardeningervices.co.uk>

**CM22**



The true cost of cheap flights from Stansted has twice been vividly exposed in recent days as passengers are asked to pay more and more in hidden charges when flying from the airport. SSE has criticised Stansted Airport's business model for loading more and more costs directly and indirectly onto passengers whilst cutting its charges to airlines. This is to enable airlines – Ryanair in particular – to offer the illusion of cheap flights, which are subsidised by the passengers themselves through hidden charges.

## Foreign Exchange Rip-Off

A recent exposure in the Mail on Sunday [23 February] showed that the foreign exchange desk at Stansted Airport was giving just €395 for £500. A spokesman for Moneycorp identified high rental costs as one of the reasons for the poor foreign exchange rate at Stansted, which the survey found to be 34% below the official exchange rate at the time.

AIRPORT	PROVIDER	WHAT £500 BUYS*
Luton	ICE	€565
Southend	Moneycorp	€545
Heathrow	Travelex	€497
Gatwick	Moneycorp	€480
<b>Stansted</b>	<b>Moneycorp</b>	<b>€395</b>

*\*Survey carried out on 14 February 2020 at which time the average mid-market exchange rate was €1.203 euros, i.e. £500 = €601.50.*

## Passenger Drop-Off Rip-Off

On 27 February Stansted Airport increased its passenger drop-off charge by £1 for the second time in less than a year. It is now £5, making Stansted the UK's most expensive airport for dropping off passengers. Neither Heathrow nor Gatwick makes any drop-off charge. Stansted's owners, the Manchester Airports Group (MAG), claims that increasing its charges for passenger drop-off is part of its 'green agenda'. However, analysis carried out by SSE shows that the true reason goes back to a 2013 agreement between MAG and Ryanair to transfer more costs and charges onto airport passengers so as to allow airport charges to be reduced for airlines and thereby subsidise cheaper flights. SSE has carried out an in-depth review of Stansted Airport's financial accounts, which shows the strategy of reducing airport charges for airlines whilst extracting higher revenues from passengers – either directly, through car parking, or indirectly, through increasing rents. Since MAG took over, annual car parking earnings have soared from £27 million to £91 million in the space of just six years. It is noteworthy that Stansted's passenger numbers are currently in decline having fallen by 2.5% in the second half of 2019.

**hpc** (State Registered)  
**Chiropodist**

CH09088

Home Visiting Practice

Mrs Julie Golden  
*Est. 1994*  
01279 873492

A professional service at a  
competitive rate



Advertise your  
business in Elsenham  
News

Contact us at

[elsenhamnews@hotmail.co.uk](mailto:elsenhamnews@hotmail.co.uk)

*Elsenham Life  
Drawing*



[FACEBOOK.COM/ELSENHAMLIFEDRAWING](https://www.facebook.com/elsenhamlifedrawing)

[charlieclaridge@gmail.com](mailto:charlieclaridge@gmail.com)



- Extensions – Loft Conversions
- Roof work – Carpentry – Roof Tiling
- First and second fix carpentry
- Kitchen fitting
- Build in wardrobes
- Decorating interior and exterior
- Floor and wall tiling
- Fencing – Decking – Patios
- Supply and fix u.p.v.c. windows
- House maintenance

**Call Trevor for friendly help, advice  
and FREE estimates**

tel 01279 816097  
mob 07932 666224



***Due to the Coronavirus outbreak, planned events may be rearranged or cancelled. Open Gardens season will also be affected. Please check our website for regular updates about events and changes.***

**Explore ‘advocacy’ at an open workshop with St Clare Hospice** *Last Thursday Sessions* is a series of lifestyle and wellbeing workshops that run on the last Thursday of every month at St Clare Hospice, exploring a unique topic each time. St Clare’s *April* event is an interactive workshop around advocacy. Open to all and free to attend, Thursday 30 April 2pm – 4pm at St Clare Hospice. No booking is required!



**St Clare’s Open Gardens returns for summer 2020!** St Clare Hospice will again celebrate the best -kept gardens of West Essex and East Hertfordshire with its 26th annual Open Gardens event! Open Gardens will take place throughout the summer. From mid-May until the end of June, lovers of flora and fauna will be able to explore dozens of glorious, green spaces in the Hospice’s catchment area. You can find details of participating gardens on the St Clare website at [stclarehospice.org.uk/open-gardens](http://stclarehospice.org.uk/open-gardens)



**Hospice charity opens new Outlet Shop** St Clare Hospice has opened a new Outlet Shop at the Links Business Centre in Bishop’s Stortford. This is the charity’s ninth store and will stock end-of-range items, with products on sale at half the original marked price. With a great selection of ladies’ and menswear, homeware and furniture, the Outlet Store is a treasure trove for eager, local thrift-shoppers. Open Monday – Saturday, 8am – 4pm. Shopping second-hand is a great way to be environmentally conscious and sustainable, combatting the ‘fast fashion’ industry by giving pre-loved clothes and furnishing a new home. Charity shops prevent more than 339,000 tonnes of textiles from being disposed of every year! Visit the Outlet Shop Centre at Links Business Centre, Units 9-10, Raynham Rd, Bishop’s Stortford CM23 5NZ. For more information, visit [stclarehospice.org.uk/shop](http://stclarehospice.org.uk/shop)



St Clare Hospice is a charity providing specialist palliative care for people living with terminal or life-limiting illnesses across West Essex and East Herts border. We care for patients and their families, providing physical, emotional, social, psychological and spiritual support, and ensuring they have timely access to skilled, compassionate and sensitive care in a place of their choice. Our services are free of charge to those who need our care, but cost over £4.6 million a year to run. With limited NHS funding we need to fundraise the majority of this each year through donations and other voluntary sources.

# Your local, independent sales & letting agent

- ✓ Sell or let your home with no fuss & the best price possible
- ✓ Accompanied viewings weekends & evenings
- ✓ Fixed fees or percentage (No VAT to pay)

Call 01279 813318 to book a free, no obligation valuation.



rightmove  Zoopla  PrimeLocation  nTheMarket.com 

1 Station Road, Stansted, CM24 8BE  
Email: peter.james@murdochsestateagents.co.uk  
[www.murdochsestateagents.co.uk](http://www.murdochsestateagents.co.uk)

## Do-It-4U

### Repair, Care & Maintenance

For your Home and Garden

- ◆ Plumbing, Electrical & Carpentry Services
- ◆ Drain Blockages Cleared
- ◆ Gutters Cleaned, Repaired or Replaced
- ◆ Gardens Tidied & Maintained
- ◆ Hedges & Topiary Trimmed & Shaped
- ◆ Fences Erected & Repaired
- ◆ Sheds & Other Sectional Buildings Erected

Telephone  
**01279 814411**  
Mobile  
**07774 877320**

## FEBRUARY AT U3A STANSTED

Contact Ray ☎ 813279 ✉ stanstedu3a@gmail.com



THE UNIVERSITY OF THE THIRD AGE

February 15 this year was particularly wet and windy, remember Storm Dennis? Nevertheless a coach load of members, lead by our Chairman Ray Smith, visited the Wellcome Genome Campus at Hinxton. This interesting and informative visit was the prelude to the formation of the Science and Technology Group. We saw where the scientists work, the equipment they use and were told how the genetic codes of plants and animals, including humans, are being established. The display included some of the current uses of gene sequencing. We took part in various activities and some of us even managed to make cardboard models of the DNA helix.



The Pub Lunch group met at the Nag's Head in Bishop's Stortford in February and enjoyed a tasty meal. They normally choose a pub close to Stansted during the winter but hope to venture further away during the Spring.

## ELSENHAM FLOWER SHOW SOCIETY

By Sue Johnson ☎ 812704



### UPDATE ON PLANT SALE AND OPEN GARDENS

#### CHANGE OF PLAN

It now looks extremely unlikely that we will be able to hold our annual Plant Sale, scheduled for Saturday 16 May. However, Spring is on its way, nature is taking its course and our plants are growing. We therefore propose to put out a list of plants available in the next issue of *Elsenham News* and ask all of you who would have come along to the Sale if you would support us by ordering either by email, phone or via Facebook. We can then make arrangements with you to either bring the plants to you or for you to collect from us.

At a time like this, we need to nurture ourselves, not only our bodies but also our minds - getting the garden looking lovely with fabulous plants and growing our own veg has got to be good!

As far as Open Gardens goes, the date is Sunday 28 June, but we may have to postpone this event for 2020. Again, we propose to update you in the next edition.

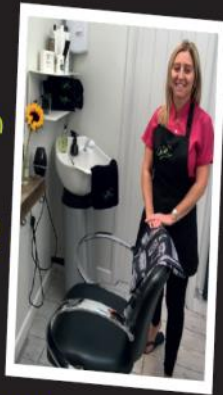
We will keep our fingers crossed for the Flower Show to go ahead on 22 August.

★  
★  
★  
**Clare's** gents hairstylist  
@ Rickling Green

★ Appointments from  
7am Mon-Sat

★ FREE easy parking

★ Fully qualified  
& insured



Call: 01799 542424  
Text: 07791 058406

City &  
Guilds  
Qualified



**Danielle Rumble  
Interiors**



Website: [www.daniellerumble.co.uk](http://www.daniellerumble.co.uk)  
Email: [interiors@daniellerumble.co.uk](mailto:interiors@daniellerumble.co.uk)  
Tel: 01279 944141  
Mob: 07500 058052

Danielle Rumble Interiors is a professional and relaxed practice that aims to provide a unique, residential design, tailored to your every need. It offers a complete design experience from initial consultation to finished project.

## Essex Autospray

**Your local Collision Repair Centre - Est 1982**

- Free Courtesy Cars
- Free Estimates
- Low Bake Ovens
- Blackhawk Alignment

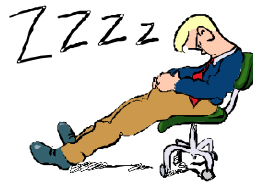


**Tel: 01279 816296 E: [info@essexautospray.co.uk](mailto:info@essexautospray.co.uk)**

**[www.essexautospray.com](http://www.essexautospray.com)**

*M11 Business Link, Parsonage Lane,*





Ray  
Franklin

## Global warming or what?

Dragonflies have emerged earlier and spread further this year because of the warm early spring weather.

"Quite unprecedented" is how Dr Val Perrin, a prominent British Dragonfly Society figure describes how 16 species, more than a third of the national total, had made their first appearances by the end of April.

He explained a trend for earlier emergence by these large eye-catching winged insects had been evident over recent years.

Dr Tim Sparks of the Natural Environment Research Council's Centre for Ecology and Hydrology said this series of reports "further confirm the evidence for increased behavioural changes as a consequence of a changing climate.

"We have seen increased winter presence in normally migrant birds and butterflies, winter flowering of plants and spawning of frogs, spring fruiting of autumn fungi and a general advancement of spring across the board."

"We have solid, unequivocal evidence of climate change impacts on British wildlife despite relatively modest warming of about 1°C. Much more warming is predicted during the remainder of the current century."

## ELSENHAM COMMUNITY CHOIR Happy 1<sup>st</sup> Birthday to the Choir!



It's hard to believe that just over a year ago we started our choral adventure and here we are a year later, still singing our hearts out, making new friends, sometimes laughing until we cry and even sounding pretty darned good on occasions!

Singing with friends and like-minded people is food for the soul and we are always happy to welcome new people to come and join us, what ever type of singer you are (or may think you are). We pretty much have a go at singing anything and everything and it's fair to say that some songs work better than others, but at least we have a go! We also encourage song suggestions and do our best to give them a try where possible.



**At present all choir meetings are cancelled.**

## E. N.C. Electrical Limited

Industrial Agricultural Domestic

Electrical Installations

Fire Alarms/Emergency Lighting

Fault Finding

Portable Appliance Testing

Fixed Wiring Test & Inspection

Over 25 Years Experience in the  
Electrical Industry

Contact: Ian Arran

Tel. 01279 647042  
Mobile 07776 252994



Email: [encelectri-calltd@btinternet.com](mailto:encelectri-calltd@btinternet.com)

44 Alsa Gardens Elsenham

Bishop's Stortford Herts, CM22 6HB

## Luxury Toilet Hire (UK) Ltd



Whether you are arranging a wedding, private party or corporate event, let Luxury Toilet Hire (UK) Ltd provide you with the perfect toilet facility to make your occasion a memorable success.

Cesspit emptying also undertaken.

Tel: 01279 504638 Tel: 0371 873003

[www.luxurytoilethire.co.uk](http://www.luxurytoilethire.co.uk)

Email: [info@luxurytoilethire.co.uk](mailto:info@luxurytoilethire.co.uk)



We also have mobile fridge and freezer units available for hire.

Tel: 01371 873003

[www.chillermatic.com](http://www.chillermatic.com)

Email: [info@chillermatic.com](mailto:info@chillermatic.com)



# DANIEL ROBINSON & SONS

Independent Family Funeral Directors & Monumental Masons

Est 1892

Always here when you need us...

- Arrangements in the comfort of your own home, if preferred
- Private Chapel of Rest
- Pre-paid funeral planning services
- Traditional & contemporary funerals to suit your wishes



79/81 South Street  
BISHOP'S STORTFORD  
01279 655477

[www.drobinson.co.uk](http://www.drobinson.co.uk)

# NATURAL OUTLOOK ON APRIL'S OFFERINGS

By Heather Salvidge ☞ 814153



Near the end of April last year I noted in my log VERY, VERY, VERY dry – not just the last four weeks but last 18 months! This winter has sure made up for it, even here in dry East Anglia. Last April was not only dry but it had a succession of clear nights followed by frosts while on some days reached temperatures in excess of 24°C (16°C + 61°F) so it was jolly warm in part. The cold nights did hold up the development of some plants but in the last week I found the leaves of the first four of the common spotted orchids in our garden.

Early last month at the EWT reserve at Abberton Reservoir I caught up with a pair of the Egyptian geese that I mentioned in the March article. These birds usually, found near water, are small geese and rather weird looking with a dark eye set in paler plumage. The back of the neck and back are a pinky/chestnut, the chest and belly are paler with a large, dark patch all finished off with a white wing panel and red legs. They are now listed as native and can be seen all year round. On the same visit we saw some goosanders which tend to be winter visitors so we were lucky. They are one of 'the sawbills', mainly, black and white, the drakes having a dark green head but the females are much greyer and have a chestnut head.

There were also several great crested grebes. These can usually be seen more locally on Hatfield Forest lake so long as not too many people are boating. Now in their breeding plumage, they sport a black crown with tufts and a white face backed by a chestnut and black frill. They were one of the bird species nearly shot to extinction to satisfy the fashion for the use of their plumes in millinery. Several people got together and campaigned to get the practice banned and in 1889 formed the Society for the Protection of Birds and, after joining with the Fin, Fur and Feather Folk, received a Royal Charter in 1904, so becoming the RSPB. Other water fowl using the lake and associated ponds are coots, moorhens, mallard ducks, Canada and grey lag geese, little grebes or 'dabchicks', black headed gulls, one or two cormorants and occasional grey herons, though these being rather shy, keep to the far end.

**Please note that Hatfield Forest is currently closed so please do not visit.**

## FROM THE PARISH REGISTERS

### Baptism:

- On 8 March 2020 at Henham Church, Finnley Howard Campbell Warmerdam.

### Funeral:

- Service of Thanksgiving at Henham Church, followed by a cremation at Cam Valley Crematorium on 17 March 2020, Rosemary Ann Elliott, aged 65 years, of High Street, Elsenham.

# EMVY *beauty*

Qualified Eyelash Technician and Make-Up Artist / Leigh Drive -Elsenham

## Eyelash Extensions

### Classic Eyelash Extensions

These lashes bring a thicker extension to natural eyelashes recommended for a natural look  
£15

### Hybrid Eyelash Extensions

A combination of classic and Russian volume eyelashes resulting in a thicker enhanced look  
£18

### Russian Volume Extensions

These lashes create a full, thick and dramatic look, recommended for those who want extra coverage  
£20

### March %%% Offer

Bring a friend and get any set of eyelash extensions for £10 each!

## Make-Up

### Full Face of Makeup including fake eyelashes

This treatment includes a full face cleanse, with a full face of makeup in your desired style and fake eyelashes  
£15

### Full Face of Makeup without fake eyelashes

All of the above, without fake eyelashes  
£13

### Full Face of Makeup with Classic or Hybrid Eyelash Extensions

This offer is for a limited time only!  
£25

CONTACT: 07969747609 (text only)  
emilysbannerman@gmail.com

# CLEAR OVENS

Oven Cleaning Specialists

01279 89 89 96



Make your oven look showroom fresh with a professional clean from Clear Ovens. Our fully insured expert technicians will make it shine like new.



Instagram



The Association of Approved Oven Cleaners



MEMBER OF THE FEDERATION OF SMALL BUSINESSES

Covering Sawbridgeworth, Harlow Epping, Great Dunmow, Braintree, Stansted, Bishop's Stortford and surrounding areas.

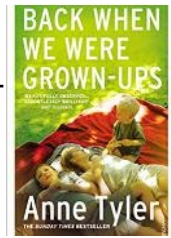
01279 89 89 96 or visit us online at  
[www.clearovens.co.uk](http://www.clearovens.co.uk)

The difference is clear

# BACK WHEN WE WERE GROWN UPS

By Anne Tyler

Reviewed by Marion Giles



*'One morning, Rebecca wakes up and realises she has turned into the wrong person. Is she really this joyous and outgoing organiser of parties, the put-upon heart of her dead husband's extended family? What happened to her quiet and serious nineteen-year-old self, and what would have happened if she'd married her college sweetheart? Can someone ever recover the person they've left behind? ...' So says the blurb on the back of the book.*

## Reviews:

- 'Her fiction has strength of vision, originality, freshness, unconquerable humour' *Eudora Welty*
- 'Superb... Beautifully conceived, masterfully executed... Out of the emotional confusions spawned by dislocated, dysfunctional families, Anne Tyler has produced - yet again - a scintillating comedy of manners, *Sunday Telegraph*
- 'My favourite writer, and the best line-and-length novelist in the world' *Nick Hornby*

This was the choice of the book group this month. Those of us familiar with Anne Tyler's novels didn't think this was her best. Anne Tyler often sets her novels in similar settings and this was no exception, so the book felt vaguely familiar but not new. Nevertheless, it was generally liked by all.

When Joe Davitch first saw Rebecca, it was at a party at the Davitch home - a crumbling nineteenth-century house in Baltimore where giving parties was the family business. Young Rebecca looked to Joe like the girl having more fun than anyone in the room and he wanted some of that happiness to spill over onto him, a 33-year-old divorcé with three little girls. Swept away, Rebecca soon found herself in charge of 'The Open Arms', embracing not only this man and his extended family but expertly hosting endless parties in the ornate, high-ceilinged rooms where people pay to have family celebrations in style. Now, years after she has lost her husband in a car accident, Beck (as she is known to the Davitch clan) asks herself whether she is an impostor in her own life. Is she really this natural-born celebrator, joyous and outgoing? Can she always be there for Poppy, (Paul) her almost 100-year-old uncle-in-law who lives on the top floor, for stepdaughters - Biddy (Bridget) and NoNo (Elinor) and Patch (Patricia) and the husbands and fiancés, as they come and go, and their children - and for her own daughter Min Foo, (Minerva) pregnant again with her third child and a third partner?

Rebecca starts to wonder what would have happened if she'd married her blond college sweetheart, Will Allenby, back when they were so young and serious and so sure about everything. She contacts him to find out. However, it is not always possible to rediscover the person one has left behind and that includes herself.

## HATFIELD FOREST

By Helen Hooker & Elizabeth Reeve

☎ 870678



Hatfield Forest is an ancient site, but sometimes it takes modern technology to reveal information about its past. A survey carried out in the gravel pit area gives us a glimpse back to the last Ice Age.

Our researchers made two-metre boreholes to explore biodiversity and geology here. This area is unique, with a seam of sandy gravel amid a sea of Essex boulder clay. It was discovered that the lower levels of gravel were completely exhausted by ancient quarrying. A wide range of stones and pebbles were found, including flints, sandstone and quartzite. These are thought to have been deposited by an early channel of the River Thames, before it was forced south to its current location at the onset of the last Ice Age. The gravel and sand quarried here was a prized and locally rare material used for road building - including the Roman Stane Street, now the B1256 through Takeley. Elsewhere, our new Environment Agency funded aerators are helping to combat oxygen depletion in the lake, caused by blue-green algae.

Many visitors will remember the cygnets our resident swans raised last summer. In September one of the brood was found injured and Volunteer Ranger Gerry Wallace took it to The Swan Sanctuary at Shepperton, Middlesex for treatment. The cygnet's a damaged hip was treated and after regaining full mobility he was released onto the sanctuary's main lake.

**Hatfield Forest is currently closed to visitors so we ask you not to visit us please.**

For more information about Hatfield Forest ;[www.nationaltrust.org.uk/hatfield-forest/](http://www.nationaltrust.org.uk/hatfield-forest/)



## JOHN COLEBY

**Experienced Interior and Exterior Decorator**

For a friendly, reliable service please telephone  
**01279 815510 or 0793 9070818**  
for a free estimate

# ELSENHAM TENNIS CLUB

By Petra Studholme ☎814667 ☎07884 024106



## Preparing for the tennis season starting in April

Our membership starts in April and the committee decided to keep fees unchanged from last year - they are amongst the most affordable in the area and we have excellent facilities including regular club nights, Sunday afternoon leisure play, ladies' Friday morning play, weekly Wednesday evening coaching sessions and more. We have floodlights operated by tokens so you can play until late in the evenings, summer and winter. For more info go to [www.elsenhamtennisclub.co.uk](http://www.elsenhamtennisclub.co.uk).

We also participate in the Essex Small Club League in men's, ladies' and mixed if you want to join our teams. Being a member of ETC (and becoming a member of British Tennis for free) means that you are also eligible to enter the Wimbledon Ballot we hold again in spring of next year. If you fancy applying for Wimbledon tickets, it's a great way to increase your chances to watch Wimbledon at SW19.

### Covid-19 restrictions

Members are still allowed to play in small numbers but must bring their own equipment and disinfect locks afterwards.

Follow the Elsenham Tennis Club group on Facebook to find more frequent updates.

**ETC quiz on 4 April, 7.30pm has been cancelled.**

### Attention Railway Buffs:

RAILWAYANA FOR SALE, including a genuine aluminium 'Elsenham' station sign (WAGN), two tail/ marker lamps, various West Anglia signalling alteration diagrams/maps, wooden replica locomotive headboards (Flying Scotsman, modern The East Anglian, The Day Continental, The Red Dragon, and so on), numerous railway books (UK & Australian), railway DVDs, various railway-related postage stamps and a hand painted wooden 'Beware of the Trains' sign.



For further details, please call ☎ 813273

# ELSENHAM BOWLS AND SOCIAL CLUB

By Trevor Hackett, Chairman

---



In view of the recent announcement by the Prime Minister that all people are to avoid unnecessary social contact and travel for the next 12 weeks, the committee met for an emergency meeting to discuss future events in the club.

The committee decided to cancel the quiz evening, all bingo evenings and the village café.

Also, the first anniversary match against six local clubs scheduled for 25 April would be cancelled. This was to be part of our 25th Anniversary Celebrations and would have been sponsored by Daniel Robinson & Sons.

Going forward, we will review events in May and June in the light of government advice. We will keep you posted through *Elsenham News*.

I wish you all good health and hope for a speedy return to normality.

**All Bowls & Social Club events are cancelled until further notice.**

## STANSTED HALL & ELSENHAM CRICKET CLUB

By David Brown 📞 831011 ✉ david1.r.brown@gmail.com

---



**Our coaching season was due to start on 24 April but all recreational cricket has been suspended.**

The club has been working closely with Molehill Green Cricket Club and improvements are being made on the pavilion ready for the start of the new season. The Molehill Community Association will be using the pavilion for meetings.

We are delighted that Andrew Mackinlay has won a Jack Petchey Achievement Award for his services to the club. Andrew's coaching skills are exceptional and the youngsters learn so much, not only about cricket but also about behaviour generally from him. This is something that we have instilled over many years at the club.

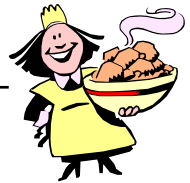
The senior teams have been netting at HECC for a few weeks now and they are all looking forward to playing in the new 'local' league when play resumes.



# COOKERY CORNER

By Sue Johnson ☎ 812704

---



This recipe has a lot of ingredients you'll already have in your store cupboard. It is a wonderfully warming and filling supper, tastes delicious for lunch the next day and it freezes brilliantly.

## BEST EVER SAUSAGE CASSEROLE (serves 6)

- 1-2 tablespoons sunflower oil
- 12 good quality pork sausages
- 6 rashers rindless streaky bacon, cut into 1in/2.5cm lengths
- 2 onions, peeled and thinly sliced
- 2 garlic cloves, peeled and crushed
- ½-1 teaspoon hot chilli powder or smoked paprika
- 400g can chopped tomatoes
- 10 fl oz (300ml) chicken stock
- 2 tablespoons tomato puree
- 1 tablespoon each Worcestershire sauce and dark brown muscovado sugar
- 1 teaspoon dried mixed herbs
- 2 bay leaves
- 3-4 sprigs fresh thyme
- 3½ fl oz (100 ml) white wine (optional)
- 400g can butter (or mixed) beans, drained and rinsed

Heat a tablespoon of the oil in a large non-stick frying pan and fry the sausages gently for 10 minutes, turning every now and again until nicely browned all over. Transfer to a large saucepan or a flameproof casserole dish and set aside. Fry the bacon pieces in the frying pan until they begin to brown and crisp, then add to the sausages.

Place the onions in the frying pan and fry over medium heat for 5 minutes until they start to soften, stirring often. You should have enough fat in the pan, but if not, add a little more oil. Add the garlic and cook for 2-3 minutes more until the onions turn pale golden brown, stirring frequently. Sprinkle over the chilli powder or smoked paprika and cook together for a few seconds longer. Stir in the tomatoes, chicken stock, tomato puree, Worcestershire sauce, brown sugar and herbs. Pour over the wine (or some water if you're not using wine) and bring to a simmer.

Tip carefully into the pan with the sausages and bacon and return to a simmer, then reduce the heat, cover the pan loosely with a lid and leave to simmer very gently for 20 minutes, stirring from time to time.

Stir the beans into the casserole, and continue to cook for 10 minutes, stirring occasionally, until the sauce is thick.

Season to taste and serve with rice, mashed potatoes or slices of rustic bread.

# Editorial Information

## Articles

The **last day** for editors to receive articles, advertising and letters, which must contain the author's name and address (which may be withheld), is **the 12<sup>th</sup> of each month**.

Articles should ideally consist of a half page of A5 or a full page of A5. Articles over these sizes or letters containing more than 500 words may be edited depending on space.

**Copy submitted after the 12<sup>th</sup> may not be accepted but will, if deemed appropriate, be held over to the next month.** We are happy to receive handwritten articles that ideally should reach us earlier than the 12<sup>th</sup> to allow for scanning etc.

**Dates for the Diary** must include date, event, venue and time.

**Please submit all articles, adverts, letters and queries to the editorial team at: [elsenhamsnews@hotmail.co.uk](mailto:elsenhamsnews@hotmail.co.uk)**

## General Notes

Whilst every effort is made to ensure that information is correct, the editorial team cannot be held responsible for any inconvenience caused through errors or omissions.

The views expressed within this magazine are not necessarily the views of the editorial team or Elsenham Community Association (ECA).

The editors and the ECA can accept no responsibility for the goods or services advertised in the magazine. Advertisements are included in good faith. The editors reserve the right to allow replies to letters/articles to be made in the same edition when appropriate.

**The editors' decision is final.**

**Wanted/For Sale items:** village residents may submit details of items wanted or for sale at no charge. These will be included in the next available magazine subject to space and acceptance by the editors.

## Subscriptions

*Elsenham News* is available by email (on a pdf) at no charge, or through the post at a cost of £13 per annum. Contact Sarah, see details below.

## Advertising

The costs are as follows:

	Single Insertion	Annual Cost (11 issues)
Half Page	£20	£190
Quarter Page	£10	£100
Inside Page	£50	n/a
Back Page	£75	n/a

**Village organisations** attract reduced rates, £5 for ¼ page. Half and full-page adverts attract full rates.

## To place an advertisement:

For any queries please contact us. Please send your advert as Word or Publisher via email to [elsenhamsnews@hotmail.co.uk](mailto:elsenhamsnews@hotmail.co.uk)

Once your advert has been approved and you are happy with it, you will be sent an invoice, which should be paid by BACS.

## Flyers

It costs £50 to insert an advertising flyer into the magazine. You must let us know by the deadline of the 12<sup>th</sup>. You must also provide the flyers.

## Editorial Team

Sarah Alder	817660
Marion Giles-Donovan	812763
Heather Baxter	812924

## ECA Website

[www.ElsenhamCommunityAssociation.org.uk](http://www.ElsenhamCommunityAssociation.org.uk)

**If you respond to one of the adverts in the magazine, please tell the advertiser that you found them in *Elsenham News*.**



## UPCOMING EVENTS TBC

**Saturday 6 June Elsenham Village Fete**  
**Vintage Toy and Doll Display St Mary's Church Sat 20/Sun 21 June**  
**Village Open Gardens Sunday 28 June 1-5pm**  
**Henham School Fun Run and Fete Sunday 28 June**  
**Elsenham Flower Show Saturday 22 August 3pm Memorial Hall**  
**Santa visits the village 5 December 1pm Village Hall**

### VILLAGE CONTACTS

Airport Roadside Parking		0800 731 2385
Beavers	Jackie Weston	816282
Bowls Club	Jean Platt	816151
Brownies	Jennifer Jarvis	814434
Church Office (Old Frank's, High St, Elsenham)	Anna Hicks	814285
County Councillor (Stansted)	Ray Gooding	813103
Cricket Club	David Brown	831011
The Crown pub	info@thecrown.info	814444
Cub Scouts	Linda Gleeson	850504
Cycling Club (Victoria CC)	Doug Yareham	07884 040892
Elsenham Community Association (ECA)	www.ElsenhamCommunityAssociation.org.uk	
ECA (Chairman)	Allan Hathaway	813385
ECA (Secretary)	Jill French	647543
Elsenham Surgery	www.elsenhamsurgery.nhs.uk	814730
Elsenham C of E Primary School	Linda Reid, Headteacher	813198
Elsenham Church PCC Secretary	David Hill	812397
Elsenham Rights of Way website	www.e-voice.org.uk/erowos/	
Friends of Elsenham School (FOES)	Gemma Mills	07745 036066
Guides elsenhamguides@gmail.com	Gemma Lewis	07792 572423
Henham & District Garden Society	Moyra Jackson	647351
History Society	Mike Rea evhs12@hotmail.co.uk	813634
Member of Parliament	Kemi Badenoch	0207 219 1943
Memorial Hall Bookings	Cheryl Rae	817834
Neighbourhood Watch Co-ordinator	Frances Lambert	07771 728332
	franceslambertnhw@btinternet.com	
Parish Clerk - Louise Johnson	louise.epc@gmail.com	07456 791727
Elsenham Parish Council Website	https://elsenham-pc.gov.uk/	
Police		101
Post Office		812175
Rainbows	Petrina Lees	816675
St Mary's Fabric Fund	Elizabeth Barker	813543
Tennis Club	Petra Studholme	814667
Tots & Toddlers	Trudi Marsh	899864
Uttlesford District Councillors	Petrina Lees	816675
(for Elsenham & Henham)	Garry LeCount	07836 346717
Village Hall Bookings	Annie Gleeson	07809 490731
Village Hall email address	elsenhamvillagehall@gmail.com	
Women's Institute	Gill Hathaway	813385
WI website	www.elsenhamwi.co.uk	
Youth Football Club (Chairman)	Paul Jarvis	814434

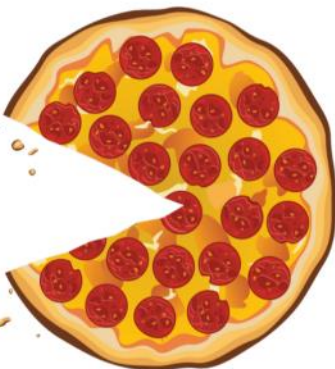
If you would like your village organisation contact to appear regularly in the magazine, please contact one of the editors, see opposite for details.

# NEWPORT PIZZA

Newport train station, Newport, CB11 3PL

Orders by phone: 07378 879899 or 07378 874647

Full menu on [www.newportpizzasw.co.uk](http://www.newportpizzasw.co.uk)



**FREE delivery to  
Elsenham and nearby  
villages**

**(£15 minimum)**

**April Special**

**Two for £20**

*Any two 15" pizzas for only £20.  
Valid for collection or delivery.*

*Must mention this ad when  
placing your order by phone  
only. Not valid online*

## Mix Box Deal

**Any 12" pizza + 5 chicken strips + mozzarella sticks + wedges & dips for only £20.**

**Valid for collection and delivery.**

## Opening Hours

**Sun - Thurs 4pm - 10pm**

**Fri & Sat 3pm - 11pm**

**Payment method: Cash & card payment accepted on  
collections & deliveries**

**Work for us? Drivers & leaflet distributors vacancies available.  
Get in touch.**