

Elsenham News



75th Anniversary of VJ day
Saturday 15 August

elsenhamsnews@hotmail.co.uk

August 2020

75p where sold

Please note that following government advice regarding Covid-19, all regular activities that would normally take place in the Memorial Hall or the Village Hall have been cancelled until further notice.

The following groups or activities are suspended until further notice:

Beavers
Brownies
Community Choir
Cubs
Football
Guides
Life Drawing
Line Dance
Nordic Walking
Rainbows
Shape to the beat
Slimming World
Tots & Toddlers
Yoga
Zumba
Mobile library visits (Stansted Library has reopened)
Village Café, tea, coffee and lunch

Some groups are meeting online or in a limited way

Church services and special events (please see page 25)
Elsenham Tennis Club activities (please see page 43)
Elsenham & Stansted Hall Cricket Club training & fixtures (see website)
Kick Boxing (on Playing Field)
Little Fishes (online)
U3A groups (please see page 19)
WI (online, please see page 37)

Parish Council meetings are being held by Zoom. The next meeting is on 3 August. Contact Louise Johnson for information by email on [✉ louise.epc@gmail.com](mailto:louise.epc@gmail.com)

THE NEWS REPORT

From The Editors



Not quite the start to summer that we would like but it's good to see people out and about a bit more and to catch up with friends and family in open spaces, at safe distances. Elsenham News online is, of course, completely safe, so read on.

Scarecrow Festival

What a wonderful selection of scarecrows Elsenham residents created – from arty chicken-wire installations to straw-stuffed friendly faces and even a baby in a high chair! There were traditional ones, one who did something different each day of the festival, and lots of nods to popular culture, including Darth Vader and Mary Poppins. Amazing! We have a few pics on p7 and there are lots on the Henham & Elsenham Newline Facebook group. Thank you to everyone who stitched and stuffed and set out props. A big thank you too to the organisers, it was a beam of cheerfulness that we all needed.

Local attractions

A quick reminder that Daisy May's Farm is open again, see p15, and Stansted Golf World is also open, including the Adventure Golf, see advert on p6. The Crown has re-opened with a new team there, so you can eat out in the village again. Also, visit the Bowls and Social Club, see p41. Covid-19 has had a terrible impact on small businesses of all sorts so if you can support a local business, please do.

New walking routes have been created by the 100 Parishes Society. See p29 if you would like a new route to walk.

Leaving school, waiting for exam results

It's been a very different experience this year for those leaving school, and those waiting for results of GCSEs and A-levels are feeling even more uncertain than usual. We wish you all the best of luck.

If you would like to contribute to the magazine – letters, articles, photos – please get in touch, elsenhamnews@hotmail.co.uk, it would be great to hear from you. Stay well.

The Editors

We are continuing to produce Elsenham News in PDF format only. It's available via the Henham & Elsenham Facebook group and the Elsenham Community Association website. We can email it to anyone who requests it via elsenhamnews@hotmail.co.uk. We are still running adverts from our regular advertisers to keep them visible to the local community; where you can, now or in the future, please support local businesses.

Regular features

100 Parishes	29	Elsenham Primary School	11
Book Review	35	History Society	23
Bowls & Social Club	41	Natural Outlook	21
Church letter	24	Parish Council	9
Cookery Corner	45	Ray's Reflections	33
Development Developments	17	Women's Institute	37

 **S.E.P** 
**TREE CARE & GARDEN
MAINTENANCE**

Tree Topping & Felling
Pruning & Pollarding
Hedges cut, Trimmed & Removed
All waste Chipped & Removed
Garden, Garage & Site Clearance
Gravel Driveways & Paths
Fencing
Turf Supplied & Laid
Jet Washing Paths & Driveways
Local Tradesman
20 years experience
For a free estimate Phone
07903 621657
08000 588057
14 Day Cooling off Period

Frank dusters



Builder's Cleans
Moving Day cleans
Letting Cleans

Daily
Weekly
Fortnightly
Monthly

Competitive
Local
Friendly & Flexible Service

Phone: 01799 802044
Mobile: 07368605193

 **GREENSIDE**

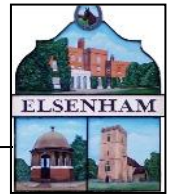
BOUTIQUE CATTERY

Compassionate and Top Pawformance Care for your cats

Tel: 07525756414

Email: info@greensideboutiquecattery.co.uk
www.greensideboutiquecattery.co.uk

Licensed by Uttlesford Council with four star rating, located in Cherry Green, Broxton, Dunmow CM6 2DD



Registered Charity: 1186436

Elsenham Community Association Memorial Hall

The Management Committee of the Elsenham Community Association (ECA) met in July 2020 and has made a complete and comprehensive risk assessment based on information received from Action with Communities in Rural England (ACRE) with regard to the required standard before opening of the hall.

On the basis that:

- 1) the hall is run by volunteers and there are no 'staff' present on site at opening times (unlike the Bowls Club or The Crown public house) to ensure all areas and surfaces are kept clean to the required standard before and after a hiring
- 2) the hall's capacity given its size is capable of 15 seated and 20 standing with the current two metre ruling
- 3) the kitchen and toilet area are situated in such a way as to prohibit a one way system to allow social distancing to be achieved.

It is with regret the hall will remain closed with no permitted entry until the Management Committee reviews the situation again towards the end of September 2020, when hopefully the situation will be such that we can reopen.

If you have any questions with regard to the hall please feel free to ring me and I will endeavour to answer them for you.

Thank You

Allan Hathaway

ECA Chairman

75th Anniversary of VJ Day – 15 August, 2020

St Mary's Church is pleased to be taking part in the celebrations of the 75th Anniversary of the end of the war in the Far East.

At 11.10 am on Saturday, 15 August the poem 'Cry for Peace' will be read out, and then a church bell will be tolled seventy-five times. In the current situation it is not possible to invite people to witness this event, but if the wind is in the right direction it might be possible to hear the bell ringing.

Roger Clark – Churchwarden

ELSENHAM SCARECROW FESTIVAL 2020

✉ elaine.terry2011@btinternet.com

☎ 07962 586825

Well who knew that the good folk of Elsenham loved a scarecrow that much?

What a delightful triumph the festival was and thank you so much to everyone that took part, no matter how big or small your scarecrow was! Make sure you get your creative thinking cap on for next year, as I think it could be even bigger and better.

We had such a massive variety of over 40 scarecrows, which was amazing.

Photos of them will be displayed in the Memorial Hall at next year's Village Fete on Saturday 5 June, so make sure you are there!



Golf World Stansted

1066 ADVENTURE GOLF | FOOTGOLF |
9 HOLE COURSE | DRIVING RANGE |
PLUS TAKEAWAY FOOD!

NOW OPEN!!
Everyone Welcome!

Golf World Stansted, Hall Road, Nr Stansted Airport, Essex
CM22 6FL | 01279 812 865 | leanne@golfworldstansted.co.uk
www.golfworldstansted.co.uk





Simplylawns

Lawn Treatment Service

Fed up with moss and weeds?

- I offer:
- Regular lawn feeds
 - Weed treatment
 - Moss treatment
 - Aeration
 - Scarification

CALL ANDREW NOW FOR A FREE LAWN SURVEY
on 07791 128399 or visit my website

www.simplylawns.co.uk

Local Business. Friendly, professional service

Taylor Computer Services (Stansted)

On-site Computer Maintenance/Repairs

DON'T BE RESTRICTED TO OFFICE HOURS, I CAN VISIT YOUR HOME OR OFFICE
DURING THE DAY, EVENINGS OR WEEKENDS AT A TIME TO SUIT YOU.

Email and Broadband Setup, Data Transfers/Data Recovery, Hardware & Software
Installation, Virus & Spyware Removal & Protection, New PC Setup & Training

Call Derrick on 01279 816418 ~ 07926 289749
Email: Info@tcsstansted.co.uk



BARLEY GROVE

FINANCIAL SOLUTIONS LIMITED

- * Annual Accounts/Book-keeping
- * Payroll
- * Corporate Tax returns
- * Self-Assessment Tax
- * VAT Returns
- * New Business Set up
- * IR 35 advice
- * Construction Industry Scheme (CIS)
- * Making Tax Digital Advice

A PROFESSIONAL AND TAILORED SERVICE TO MEET YOUR PERSONAL
OR COMPANY NEEDS

LOCAL COMPANY

CONTACT US NOW FOR AN INFORMAL DISCUSSION

Tel : 0330 133 0246

Email: info@barleygrove.co.uk

Website : www.barleygrove.co.uk

ELSENHAM PARISH COUNCIL 6 JULY 2020

By Louise Johnson, Clerk. ✉ louise.epc@gmail.com ☎ 07456 791727



There have recently been problems with cars assembling in the playing field late at night and causing a noise disturbance to the residents in Leigh Drive. The Parish Council asks that all people using the playing field at night respect the local residents. The police have been informed about the disturbances, and they are carrying out extra patrols.

The outdoor adult gym has not yet been agreed, and research is still being carried out. There was concern by some residents that if the gym is installed on the playing field it would encourage more people to use the playing field late at night.

Due to COVID-19, the children's play area has been locked for the past few months. The Government announced that children's play areas could be reopened if it was safe to do so. The Parish Council discussed the options and it was agreed that priority must be to keep children and families safe. Therefore, it will reopen on 17 July - this date was agreed as it is the start of the school summer holidays. Elsenham Primary School has done some outstanding work to try and keep the children safe. The children were placed in small bubbles which they always keep to. The Parish Council did not want to undo all this excellent work that the head-teacher and the teachers at Elsenham Primary School have worked so hard to achieve, by allowing the bubbles to mix in the Parish Council's play area. Before the play area was opened a safety inspection and a risk assessment were carried out and all the equipment will be cleaned and sterilised.

The gradual reopening of primary schools has been successful so far and almost all primary schools in the county are open and more than 85% of children in their relative year groups have returned. In September, all schools and all year groups will be required to return subject to several constraints. Essex County Council still has a lot of decisions to make regarding school transport - they already spend 30 million per year on school transport and the projection is that this could double.

Essex County Council installed a temporary mortuary on the park and ride of Chelmer Valley, fortunately this was never used. The mortuary has now been removed and the park and ride will be back in service very soon.

A new bus timetable is currently under preparation, this will hopefully include a stop in Jenkins Drive.

The new flowerbed boxes have now been completed and all the summer begonias and geraniums have been planted.

The next Parish Council meeting will be 3 August 2020, 8pm via Zoom.



Cultivated Turf Supplies

**ROTAVATING
NEW LAWNS LAID
ALL GARDEN WORK
UNDERTAKEN**

CALL FOR FREE QUOTATION

 **01279 718555**

 **07930 188920**

6 Windmill Close
Great Dunmow
Essex CM6 3AX

Andrew Allen
Heating Services

07973 688286

lunarpond@hotmail.co.uk

- 'Gas Safe' registered
- Boiler and appliance servicing and breakdowns
- Plumbing and heating installation and maintenance
- Natural gas
- Landlord certificates



ALLASPECTSTREESERVICES.CO.UK

**All Aspects
Tree Services**

**TREE SURGERY - STUMP GRINDING
HEDGE CUTTING - FENCING**

01279 755545 07940 231964

INFO@ALLASPECTSTREESERVICES.CO.UK

ELSENHAM C. OF E. PRIMARY SCHOOL

By Linda Reid, Headteacher



It is with great sadness that I inform you about the unexpected death of Mr “Dusty” Clark, our Crossing Patrol Attendant. Although not employed by the school directly; he was very much a part of our school community. Dusty liked nothing more than to be with the children and to chat to them about their lives. He loved to keep up with the news from our families as a whole, and I know he will be greatly missed. For many, he had become an integral part of their school lives and for some, a dear friend. Our thoughts are very much with his family at this time and we will ensure that they know just how special he was to everyone here.

This has been an end to an academic year like no other. The ongoing uncertainty for schools, as well as for the country as a whole, has inevitably meant that plans and risk assessments have been the order of the day for the last few months. Our school has been open throughout the period of lockdown and gradually, since the beginning of June, we have managed to have most of the children back in school with us, even if only part time, as it was for some. We may be working in bubbles, with social distancing in place, but relationships remain strong between children and adults, and between the adults. The children have been engaged and motivated to be back in school, and their smiles and laughter are wonderful: we are proud of each, and every one of them! Parents have been incredibly supportive of the work we have been doing, and they have played their part in keeping everyone as safe as possible, whilst ensuring that the children have the best possible learning opportunities, particularly during a disrupted year like this one. Meetings with parents have taken place online and there have been a great many letters sent out detailing the latest changes. The children however continue to inspire us; the school buildings have truly come to life again.

As the term draws to a close, it is worth reflecting on the success of the end of year celebrations for Year 6 pupils. These were particularly memorable, with an online Leavers’ Assembly replacing the more traditional face to face meeting. A game of socially distancing rounders came next, followed by a picnic lunch and shirt signing session, with an open air disco on the field, rounding off the festivities. I’m pleased to say that everyone had a great time largely thanks to the hard work and dedication of the staff, particularly those staff members working in Year 6 led by Miss Ashwell, Assistant Headteacher. These weren’t the expected celebrations, however, I am sure the memories of them will stay with the children for a long time.

As almost seems inevitable at the end of the year, we say goodbye to a number of staff. Miss Ashwell and Miss Stonham are leaving us and we are very sorry to see them both go. They have loved their time here and have really enjoyed being part of such a supportive school community. We will miss them greatly and wish them the very best of luck for the next stage of their careers in teaching! We also say goodbye to Mrs Bannerman, who has worked with us as a Teaching Assistant for the past seven years. We wish her well as she continues to pursue her ambition of gaining Qualified Teacher Status in the future. We are fortunate to have made a number of staff appointments to replace them.

Continued overleaf on page 13



Double Glazed Units – SAME DAY

- Table Tops
- Shelves
- Emergency Glazing
- Replacement Misted Double Glazing
- Greenhouse Glass
- Cat and Dog Flaps Fitted
- Splash Backs – Any Colour
- Glass Cut To Size
- Emergency Boarding
- Safety Glass
- Mirrors

**LOCAL COMPANY – GREAT PRICES – RELIABLE
PROMPT SERVICE**

Elsenham – Great Dunmow – Bishops Stortford - Stansted



Bobby's Gardening Services Ltd.

We provide high quality workmanship at reasonable prices, letting our work speak for itself. Our work includes both landscaping design and garden maintenance. Local friendly business. Visit our website below. We are also on checkatrade.com.

Our services include: full garden design, decking, fences, new lawns, patio, artificial grass, garden walls, raised beds, sheds, bespoke seating, fire pit, water features, planting, living walls, stone walls plus garden maintenance.

Contact us on: 01279 957770 or 07961 546929

E: bobbysgardeningervices@yahoo.co.uk

<http://www.bobbysgardeningervices.co.uk>

CM22

Our school roll continues to grow in numbers and, in September, we expect to have more than 300 children in school, which is considerably more than double the number of pupils on roll when I began here as Headteacher 17 years ago. Our uniform is changing slightly in September and will be a darker green. The introduction of a tie for children in Key Stage 2 is proving to be a real highlight. There have been a great many changes during this period and it has been quite a journey, but it is wonderful to see our school continue to be part of such a vibrant and caring community. The efforts of everyone to support their neighbours and friends, as well as strangers during this period, has been truly inspiring.

The return of school in September is likely to bring some new challenges, as we continue to work through the uncertainties ahead but with the support of our amazing staff, Governing Board, FOES, our PTA, as well as parents and the community as a whole, I have no doubt that the school will continue to thrive.

Thank you all and have a wonderful summer.

NEIGHBOURHOOD WATCH

By Frances Lambert



Delivery Scams

Please stay vigilant following an increase in reports from people receiving unexpected packages from couriers, more recently in Bishop's Stortford. In the reported instances the packages have contained either iPhones or laptops. Following the delivery, a woman wearing a DPD courier uniform arrives to collect the packages, claiming they had been delivered to the wrong address.

Detective Chief Inspector Sam Khanna, from Hertfordshire Constabulary's Serious Fraud and Cyber Unit said,

"We want all residents to be aware of this potential fraud. If goods are delivered that you have not ordered and are marked with your address you should inform the company that sent it and wait for them to send a courier. Always check with them which courier company is making the collection and when they will arrive. If someone knocks on the door claiming to have come to pick it up after it was delivered by mistake, think twice about handing it over. Are they from the same company that just delivered it? Can you see a company vehicle? Just because they are in a uniform does not mean they are from the company as they claim. If someone tries to deliver a parcel you've not ordered, refuse to accept it so that it goes back to the depot or the sender. If you have handed a parcel over please report it to Action Fraud www.actionfraud.police.uk. If someone is at your door claiming to have come to pick up a parcel you never ordered ask to see their ID before handing it over."

If you would like to receive the Neighbourhood Watch police reports on crimes in our area plus the police social media updates please email franceslambertnhw@btinternet.com.

Remember if you see something that the police should know about urgently, dial 999, for anything else dial 101.

01279 656 983 - 0800 587 2556

Unit 1, Suite 1, Peek Business Centre, Woodside Road, Bishops Stortford, CM23 5RG



- Aerial Installations
- CCTV & Security Alarms
- Audio Visual Installations
- Wireless & Wired Networks
- TV Wall Mounting Services
- Sky Installations & Subscriptions
- Freesat Installations & Receivers
- Multiroom Music & TV Distribution
- Family Run Business



www.mediacomS.co.uk

info@mediacomS.co.uk

D BONNEY & SONS MANUDEN MOTOR VEHICLE ENGINEERS

MOT TESTING

ALL MAKES OF VEHICLES SERVICED INCLUDING FOUR WHEEL
DRIVES

TRW BRAKE CENTRE

DIAGNOSTIC AND FAULT FINDING

WELDING AND CHASSIS REPAIRS

SELECTION OF USED CARS

CALOR GAS STOCKIST

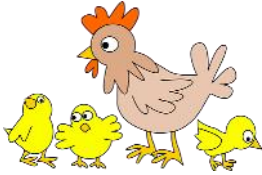
WE HELP YOU THE MOTORIST WITH A CHEAPER LABOUR RATE

GUARANTEED WORKMANSHIP

FREE COLLECTION AND DELIVERY IN LOCAL AREA

PLEASE RING: MALC, NEIL OR CRAIG

☎ 01279 813315 OR ☎ 01279 815946



Daisy May's Farm

Hall Road, Elsenham, CM22 6DN

WE ARE OPEN!

We are SO delighted to be able to celebrate with you the fact that we are now open again at last! Everyone is so happy and that includes the animals.

We obviously must observe the government guidelines and therefore numbers are restricted, and you **MUST** pre-book if you want to visit and of course, it is on a first come, first served basis.

We are open on Tuesdays, Thursdays and Saturdays and there are two sessions a day – 10am -12pm and 1pm-3pm on these days. To pre-book, please go to our Facebook page and see the details. The cost is £5 per person and there really is SO much to see on our farm.

On entry to the farm you will be given some animal food and you can then visit and feed our lovely animals and see how much they have grown. You can also visit the small animals' enclosure, play on the equipment, have a picnic (you will need to bring your own), play in our new den building area and have a splash in the stream, visit our old friends, the horses and explore our brand new Woodland Trail – there is an awful lot to do, so make sure you are not late.

You will see that our lambs and Gertrude, the kid goat, have really grown and as I type this, we are eagerly waiting the imminent arrival of piglets! We have a big variety of chickens, as well as ducks, geese, guinea fowl, quails and bantams.

As you can imagine, the past few months have been really tough for us, to say the least, so if you would like to help us, you can do this in a couple of ways. We have an **Amazon Wish List**. Nothing is terribly expensive, but everything is very much needed. If you would like to buy something, please follow the link https://www.amazon.co.uk/hz/wishlist/ls/1B5UNRLQREZDL?ref=cm_sw_sm_r_wl_mw_jrTk174ecxfGq

(If that doesn't work, to find the wish list go to Find a Wish List (under Accounts & Lists in the menu bar) and search for Rachel Berry.

We also have a **Crowd Funding page** for donations to this appeal. You can find it at www.justgiving.com/crowdfunding/alison-thomson-5 Anything you can give is MASSIVELY appreciated.

Keep an eye on our website for news – www.daisymaysfarm.org.

CHIROPODIST & PODIATRIST

Bishop's Stortford

- Orthotics
- Diabetic Foot Care
- Saturday Clinics
- Routine Treatment

R. Handford & Colleagues
H.C. P.C Registered

Bishop's Stortford - 16 Hockerill
Street

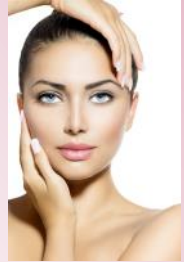
01279 652249

www.feet.org.uk

The Beauty Shack Elsenham

07703 784466 / 01279 497236

- * Waxing
- * Facials
- * Massage
- * Nails
- * Tints
- * Spray Tans
- * Lash Extensions
- * Lash Lift
- * Occasion Hair and Makeup



Vouchers Available

**GLYNN'S
CHIMNEY SWEEPS**

Est. 1995



**VACUUM AND
BRUSH**

**NACS MEMBERS
HETAS APPROVED**

COMPETITIVELY PRICED

01279 424983

www.glynnschimneysweeps.com



**DECORATING SERVICES
ALL ASPECTS OF DIY**

NO JOB TOO SMALL

For a friendly reliable service
Just Ask.....

GARY KING

Home : 01279 850001

Mobile : 07951 452602

g.king962@btinternet.com

DEVELOPMENT DEVELOPMENTS

By *Graham Mott* ☎ 812516 ✉ motts@grahammott.plus.com



The Planning Inspectorate handles about 20,000 appeals a year, and it is not surprising if the quality of the decisions varies. The Inspector who recently decided to allow demolition of 'Crossways', Station Road, and the erection of three new houses, cannot be said to have engaged convincingly with some of the leading issues. The decision, however, is final, unless someone decides to appeal to the High Court on a point of law - which could confidently be expected to result in a large expenditure of time and money, and a nil result.

During the last month or so, there have been approvals by Uttlesford District Council's Planning Department for four houses in a yard at Fullers End, an extra house in the extensive grounds of a property at the far end of Park Road, and a barn conversion (the second on the same site) at Tye Green. Dedicated parish statisticians reckon that the total number of approvals within Elsenham since 2011 is currently 660, including all the small schemes which are ignored in Uttlesford's figures.

The residents of all these new houses are of course an asset to the village, and the warmth of the welcome extended to them is matched only by the warmth of the opposition to proposals for more new developments. It is noticeable that new residents often make the strongest objections to further developments. It is entirely reasonable to say, in effect, 'I'm glad I'm here, but enough is enough, and can we stop there, please?' The dates of two appeals are now known: the first against refusal of up to 40 dwellings off Rush Lane will be on 6 August, and the second against refusal of up to 350 between Elsenham and Henham is scheduled to start on 9 November. As matters stand, both will be virtual appeals; if you objected at the consultation stage you should receive details of how to participate.

A full-scale Public Inquiry is now promised following the appeal by Stansted Airport against the refusal of UDC's Planning Committee to permit extension of passenger numbers from 35 million to 43 million per annum. The Airport seems to have gone full circle in their views as to who should determine the application - perhaps they're going round again using up excess fuel until the runway comes clearly into view and they can approach it with qualified confidence as to a bump-free landing. They rejected suggestions that an application of such regional, and national, significance should not be decided by a smallish local authority, insisting that they had every confidence in UDC. Now that they have been refused, they have repudiated the district council and asked for national consideration.

There is also a puzzle as to what exactly they hope to gain. Some estimates suggest that the existing permission won't be exhausted until 2035, and the Covid-19 crisis has knocked back passenger numbers considerably. It looks as if many expensive weeks will be spent over a Public Inquiry, and the result will have no impact one way or the other, at least in the short- and medium-term. Curious indeed.

Christine's Will Writing Limited

'this firm complies with the IPW code of practice'



**Wills, Will Trusts, Lasting Power of Attorney,
Funeral Plans, Estate Administration
and Safe Document Storage**

**Personal, confidential service in the comfort
of your own home, at a time that suits you**

Single Wills from £150 * Joint Mirror Wills from £200
LPA's £300 each + Court Fees * NO VAT PAYABLE

01763 848555/07703 258555

Christine Grisbrooke MIPW
chris@christineswillwriting.co.uk

www.christineswillwriting.co.uk



Institute of
Professional
Willwriters

MEMBER



APPROVED CODE
TRADING STANDARDS UK

**-STEPHENS-
CHIMNEY
SWEEP**



*Insurance Certificate supplied - Fully
Insured - Free Smoke Test*

Open Fires - Multi Fuel Stoves -
Aga - Rayburn - Gas - Oil

**CCTV Surveys - Bird Nest Removal
Local Business**

Tel: 0800 112 3600

Mob: 07918 708626

www.stephenschimneysweep.co.uk

Mat Duxbury

PAINTING

Professional Interior and Exterior Painting Specialist

References available on request

20 Years' experience

Fully Insured

NVQ Qualified and Health and Safety Certified

Local, reliable and friendly service guaranteed

For a free estimate please contact Mat on  07810 250426 or
email  mat@duxburypainting.co.uk

ELSENHAM



STANSTED MOUNTFITCHET U3A

By Sally Rich, Vice Chair ☎ 07874 385541

✉ stanstedu3a@gmail.com

Stansted Mountfitchet U3A

10th Anniversary 2019-20



Our face to face meetings remain cancelled until further notice, but many of our 300 or so members are managing to keep in touch via Zoom, YouTube, WhatsApp, email and telephone. The Singers have been enjoying YouTube rehearsals coupled with Zoom get-togethers. Art Appreciation have been chatting and watching talks together on Zoom. There are also weekly Zoom yoga sessions, Art group have been painting together on Zoom and there are others. More than 90% of members with email have been receiving regular weekly newsletters too, with news, photos and stories – many of these from our own Creative Writing group. Tony, who normally leads our Walking and Nature Appreciation Group, has been sending emails out to the Walkers giving them ideas for walks and you can see a photo of some lovely bee orchids that he found near to Wades Hall, Ugley.



In light of government information regarding the number of people able to meet both indoors and out (which although it has been eased, at time of writing is still very restrictive); information published by the Charities Commission regarding AGMs; and our own constitution, it was decided to postpone the AGM until such time as it is safe and within government guidelines to hold it. Our constitution states that an AGM must be held every calendar year, therefore on or by 31 December 2020. Meanwhile, existing Committee members remain in place.

Monthly General Meetings have had to be cancelled too, but, behind the scenes, Gill our speaker secretary, has been busy re-arranging the speakers that were previously booked. Once we get back to meetings there will be, thanks to her efforts, a full programme of speakers. We can't wait!

We are still open to new members - see ☎ <https://www.u3a.org.uk/> for details of how to join, or ✉ stanstedu3a@gmail.com

GARDEN HINT *By Sue Johnson*

Cut and shake ripe seed-heads of annuals over suitable patches of bare soil, for flowers next year.



Binwash
We clean
your
wheelie
bins!



Commercial & Domestic

**Monthly Cleaning
from just £4.50!**

Professional equipment
Same day as waste collection

www.binwash-uk.com

01799 529899

enquiries@binwash-uk.com

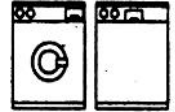
ANGLIA 
ELECTRICS

Established 1972

Domestic Appliance Repair Service

We offer Specialist Dishwasher,
Refrigeration & Cooker Service, in addition
to our long established and renowned
Washing Machine Service

Our Engineers are
Experienced and
Trained to service
most makes



01279 658767

Friendly Prompt Service

**S. PERRY
CHAPEL END NURSERY**

Covid19

The Nursery is open usual hours.

There is a oneway system in place.

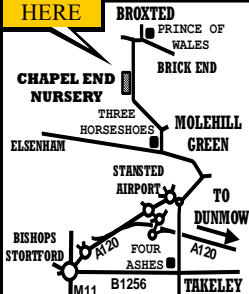
Social distancing between staff and other customers must be observed.

Some stock has been in very short supply.

This should ease as our suppliers get back to their full workforce.

See our website for latest news. Please stay safe and enjoy your gardens

**WE ARE
HERE**



**COUNTRY VALUE SEEDS ALL
90p per PACKET**
Mr Fothergills Seeds
Buy 5 Packs get Cheapest Free

OPEN 9am to 5 pm
MONDAY TO SATURDAY (CLOSED SUNDAYS)
MOLEHILL GREEN ROAD
BROXTED DUNMOW ESSEX CM6 2BW
01279 850771
www.chapelendnurserysperry.co.uk

VEGETABLE PLANTS
BASKET & TUB PLANTS
ALPINES
HERBACEOUS
HERBS
ROSES
SHRUBS
POND PLANTS
AQUATIC COMPOST
GODWINS COMPOST
WILD BIRD FOOD
SUNDRIES

NATURAL OUTLOOK ON A BUTTERFLY SAFARI

By Heather Salvidge 📞 814153



On a warm summer morning recently we set off on a village walk along the footpath that winds behind The Crown, round Hailes Wood play area and out behind the Henham Road houses, then across the 'cricket field' and into the old gravel pits. The idea was to look for orchids but it became instead a butterfly safari.

It started with the species in the fields behind the houses where there's grasses, wild flowers, bramble, and large whites caught the eye then a red admiral and then ringlets. These latter are a medium brown and have little dark circles with pale rings, both on the outside and top side of their wings. They cope when it is quite damp and often fly when others don't. They have no orange areas to distinguish them from meadow browns, which have some, or gatekeepers which have rather more. We saw both of these as we walked. Here, too, were small skippers. One of the Hesperidae group, these skippers are very small and are golden with dark borders to both fore and hind wings. Like some others in this group, when it lands the forewings are usually only half closed. It is very like the Essex skipper which flies on later. The main difference between the two is that the tip of the Essex skipper's antennae are wholly black whereas the small skipper's are orange underneath but I haven't checked this yet.

Emerging on to the 'cricket field', where the grasses and good patches of flowers give food for butterflies and other insects to feed on, there were more ringlets, large whites and the meadow browns. Descending into the old gravel pits and following the footpath and other informal trails, yet more butterflies! I'm not surprised as the old pit area has been excavated and is flat but still very sandy and is sheltered by the high sandy banks of its perimeter. Here the first we saw was the more familiar peacock basking, showing its "eyes", one on each fore and hind wings.

Next were several small heaths which are yellowish orangy brown, have a spot at the top of each forewing and a pale edge to all wings. At rest its underwing shows as silvery greyish and the forewing partly orange with an "eye" set in silver. It is often seen, as we did, in company with a small copper. This one has brown-edged orange forewings with dark spots and dark hindwings with orange, spotted borders.



Brown argus

whites, lots of them. When open, their wings are a mixture of white with lots of black spots and patches and a dark body. At rest, they are delicately marked with circles and patches on a silvery background. Lovely.

Then there was the small tortoiseshell, familiar from many gardens. It hibernates as an adult. Two less common species were marbled whites and a brown argus, the latter is a small brown one with a pale border to all wings and rows of orange spots inside the rims, very like the female of the silver studded blue. Then, marbled



Marbled White

★ ★ ★
Clare's Gents hair stylist
@ Rickling Green

★ Appointments from
7am Mon-Sat

★ FREE easy parking

★ Fully qualified
& insured



Call: 01799 542424
Text: 07791 058406

City &
Guilds
Qualified



**Danielle Rumble
Interiors**



Website: www.daniellerumble.co.uk
Email: interiors@daniellerumble.co.uk
Tel: 01279 944141
Mob: 07500 058052

Danielle Rumble Interiors is a professional and relaxed practice that aims to provide a unique, residential design, tailored to your every need. It offers a complete design experience from initial consultation to finished project.

E. N.C. Electrical Limited

Industrial Agricultural Domestic

Electrical Installations

Fire Alarms/Emergency Lighting

Fault Finding

Portable Appliance Testing

Fixed Wiring Test & Inspection

Over 25 Years Experience in the
Electrical Industry

Contact: Ian Arran

Tel. 01279 647042
Mobile 07776 252994



Email: encelectri-calltd@btinternet.com

44 Alsa Gardens Elsenham

Bishop's Stortford Herts, CM22 6HB

Luxury Toilet Hire (UK) Ltd



Whether you are arranging a wedding, private party or corporate event, let Luxury Toilet Hire (UK) Ltd provide you with the perfect toilet facility to make your occasion a memorable success.

Cesspit emptying also undertaken.

Tel: 01371 873003 or 01279 504638
Email: info@luxurytoilethire.co.uk
Web: www.luxurytoilethireltd.co.uk



We also hire out mobile fridge and freezer units.



Please contact us for a quote:

Tel: 01371 873003 or 01279 504638
Email: info@chillermatic.com Web: www.chillermatic.com

ELSENHAM VILLAGE HISTORY SOCIETY

By Mike Rea, Secretary ☎ 813634 ✉ evhs12@hotmail.co.uk

🌐 www.elsenham-history.co.uk



Once more we have had a question arising from the story of the shooting of Rose Dixon, this time asking about the history of the Mission Hall that was mentioned in the article.

During the 1870s The Society of Friends, also known as the Quakers, met in a cottage in Stansted. At their annual general meeting in 1879, it was noted that the rooms in this cottage were overflowing and that many had been turned away as there was insufficient room. The decision was made to try and acquire a parcel of land, on which to build a hall in Stansted. Following extensive inquiries, no land could be found within Stansted, but a plot was found in Elsenham opposite the entrance to Park Road. The entire cost, including land, building the hall, fencing and seating amounted to £350. The entire amount was raised by subscription and the benefactors included Mr George Stanley Gibson from Saffron Walden, Lewis Fry MP from Clifton and Joshua Green from Stansted.

In 1880 an announcement was made that *“Major General H.C. Farrell (of Stansted) will take the Sermon (D.V.) on Sunday Evening, July 28th at 6.30 o’clock. All classes are especially invited to attend”*. Following the inaugural service, one of the first local people regularly to preach at the hall, in the early 1900s, was Mr Marlow who lived in a cottage in Fullers End. The Mission Hall continued to be used by the Quakers until the 1950s, the ownership eventually being transferred to The Elsenham Working Men’s Club on its formation in 1958. The hall comprised two main rooms, with a smaller room to the rear with tea making facilities. The larger of the rooms, which was on the right of the building as you viewed it from the High Street, housed two full-sized snooker tables. The smaller of the rooms continued to be used for the Free Church (Chapel) Sunday School and their harmonium. .

The club went from strength to strength and became very successful in the local Snooker leagues but in the 1970s the popularity of snooker within the club seemed to wane. Without a licensed bar it was impossible to become a social club and the club ceased to be and the hall was taken over by The Elsenham Community Association. The building was finally demolished in 1986.

My thanks to Chris Bush, Gordon Barker and *Elsenham - The First 1000 Years* for information included in the above and to Geoff Witham for asking the question.

As the Memorial Hall is not yet reopening, our meeting planned for Wednesday 9 September will be rescheduled.

Whenever we can get back together again, we look forward to welcoming you to our meetings. In the meantime please keep well and stay safe.

Saffron Walden Market is trading as usual, with social distancing rules in place. Tuesdays and Saturdays. www.visitsaffronwalden.gov.uk for more information.



ST MARY'S CHURCH ELSENHAM

Vicar: Gary Townsend

The Vicarage, Carters Lane, Henham ☎ 850281

Where is God in a Coronavirus world?

That's the title of a book written by Professor John Lennox of Oxford and it is available free in the Henham shop and in all three of our churches. It's a good book which I heartily recommend but I do take issue with the title! We do not live in a 'coronavirus world'; I believe we live in God's world and coronavirus is in it for now. I'm sure Professor Lennox would agree that we live in God's world but for some people at the moment it may be very hard to believe that this world is in the hands of a good and loving God.

Christians believe that one day God will wipe every tear from every eye for God Himself will remove the causes of suffering once and for all. In Revelation 21: 4 it says

'He will wipe every tear from their eyes. There will be no more death or mourning or crying or pain, for the old order of things will pass away.'

Those words form part of a vision given by Jesus Christ to John, one of His first followers; a vision of a new heavens and a new earth. On the basis of such revelations we believe God is for us and has matters in hand even if at present it doesn't appear to be so. And we have sure grounds for believing that God will deliver on such a grand vision of a suffering-free world. God has already been with us in this world of suffering and actually worked with and through suffering in order to reconcile us to Himself. In the historical person of Jesus of Nazareth who went around

healing the sick, opening the eyes of the blind, making the lame to walk, the deaf hear, calming the storm, feeding the hungry and leaderless multitude, silencing the religious hypocrites, touching the untouchables, forgiving the sinners, raising the dead and proclaiming good news to the poor, God revealed himself to be a loving Father in tune with His children's predicament who gives Himself for their salvation. That giving of Himself in the person of His Son, Jesus, culminated in His sacrifice on the cross for the sins of the whole world. All that being so we look with confidence to God to bring about a world free from suffering:

*'He who did not spare His own Son – but gave Him up for us all – how will He not also, along with Him, graciously give us all things?'
(Romans 8:31).*

Jesus is the reason for my hope even at such times as these and He is my answer to the genuine heart-felt cry "Where is God?" I share my beliefs with you in the further hope that you will come to trust Jesus for the present and the future. He walked the path of suffering and endured its bitterest agonies in order to bring the whole world back to God. May our God and Father, the Father of Jesus Christ, be with you all.

Rev Gary Townsend

CHURCH EVENTS IN OUR VILLAGES AUGUST 2020

Church Services

We are now meeting at St Peter's Ugley only, each Sunday at 10am (*subject to change, following review*).
Due to the need for social distancing, we need to keep tabs on numbers, so please contact us if you plan to attend.
You will be very welcome!

**We are still meeting 'virtually' too!
Join us for any or all of our Sunday gatherings each week:**

HEU Combined Churches Service via recorded video stream

Available via the website:

www.heuchurch.co.uk

Or search 'Henham, Elsenham and Ugley' on YouTube

Elsenham 'Zoom Services' at 8:45 and 10:15am

We use the **same link** at the respective times each week.

Contact Charles Willbe
(c@willbe.me.uk) for the link

HEU Coffee & Catch-up: 11:40am - 12:30pm

A chance to chat and catch up and have fellowship with the church family via Zoom: **same link** each week.

Meeting ID: 771 5918 0523
Password: heuZOOM

Church buildings are open for personal prayer:

St Mary's Elsenham
Open at all times

St Mary's Henham
8am – 8pm every day

St Peter's Ugley
Sundays 10am – 8pm

A poster is displayed at each church with directives on how to stay 'COVID-19 safe'. Please ensure these instructions are followed at all times to keep yourself and everyone else safe. God bless!

Other regular events:

Elsenham Sunday Club/Explorers (Y1-Y6) We are running a magazine programme each week. This includes a story, teaching sheet, family prayers, quizzes and crafts and is going down a storm! Contact office@heuchurch.co.uk to receive the magazine.

Henham Sunday Club (age 5 - Y3)

Recorded stories are sent weekly to parents, along with pictures retelling the story, plus a selection of activities, colouring & puzzles. Contact office@heuchurch.co.uk to be added to this email list.

Christian Play (Y1- Y2)

We are running a magazine programme each week. This includes a story, teaching sheet, family prayers, quizzes and crafts and is going down a storm! Contact office@heuchurch.co.uk to receive the magazine.

CHRISTIANITY | EXPLORED
WHAT'S THE BEST NEWS
YOU'VE EVER HEARD?



New courses starting weekly

What do Christians believe? Who is Jesus Christ? Did he really exist? Is he really God? If he did exist and he is God, what did he say while he was here on earth? Does he really tell us what the point of life is? We have only one life – what is it all about? During these uncertain times, now seems a great time to investigate who Jesus was and make your own mind up! Come and join our relaxed and informal Zoom course.

Sessions can be tailored around your day; we can run meetings in the morning, afternoon or evening to fit around homeschooling, work and family life.

If you would like to join a group please contact office@heuchurch.co.uk stating which day and time slot (morning, afternoon, evening) suits you and we will contact you about joining a group.



Pike's Plumbing & Heating

Whether you're looking for a plumber or heating engineer, Pike's Plumbing & Heating can help.

If it's an emergency, simple problem or you're just thinking about a new boiler or bathroom give me a call – I'm available when you need me 24/7. Now's a good time to think about servicing your boiler too and make sure you're not left out in the cold! **No Call-Out Charges & Free Quotations**

Tel: 07889 140035

Craig Pike

Email: info@pikesph.co.uk



Web: www.pikesph.co.uk

- Extensions
- Barn conversions
- New Homes
- Loft conversions
- Planning Drawings
- Building Regulations
- Project Management



Local Architectural Design



Free initial consultation
 t: 01799 540600
 e: info@alundesign.com
 www.alundesign.com

Alun Design Consultancy, Neville House, Station Road,
 Wendens Ambo, Saffron Walden, Essex, CB11 4LB

alun
design
consultancy
architectural design
planning
project management
interior design



St Clare Hospice has recently launched a Bereavement Support Helpline (☎ 967670); a new service that aims to offer immediate support to local, bereaved people over the telephone.

The Bereavement Support Helpline operates from 9am – 5pm, Monday to Friday. It is run by a team of Hospice staff and volunteers, trained to deliver immediate emotional support and practical guidance for those who would like extra support after the loss of someone close.

Anyone who has experienced the loss of a loved one, whether recently or in the past, is welcome to call St Clare's Bereavement Support Helpline.



What can the Helpline offer you? By calling the Bereavement Support Helpline, you will have access to a range of supportive services:

A listening ear, and emotional support from trained St Clare staff and volunteers

Information and guidance on what to do after a death (things like registering a death, closing accounts, planning a funeral, and other practical arrangements and considerations)

Sign-posting to other St Clare services that you can access, as well as resources in your local community that could benefit you

If you would like to speak to someone about the loss of someone close, no matter how long ago you were bereaved, call the Helpline which is free, though charges may apply in line with your standard network rate.

St Clare's new Bereavement Support Helpline is funded by £46k of funding from the National Lottery's Community Fund. It is part of a range of new services that the Hospice has launched in response to a community need for bereavement support during the pandemic.

St Clare Hospice is a charity providing specialist palliative care for people living with terminal or life-limiting illnesses across West Essex and East Herts border. We care for patients and their families, providing physical, emotional, social, psychological and spiritual support, and ensuring they have timely access to skilled, compassionate and sensitive care in a place of their choice. Our services are free of charge to those who need our care, but cost over £4.6 million a year to run. With limited NHS funding we need to fundraise the majority of this each year through donations and other voluntary sources.

Scrub And Shine

Herts & Essex
leading carpet & upholstery
cleaning specialists!

We're a fully qualified family only
company and have been in the
trade for over 16 years.

We offer competitive pricing with
100% customer satisfaction
guaranteed.

Call or email us today for a free
quotation!

07545 394262
07810 016272

scrubnshine1@gmail.com

NICK SHUTES PAINTING AND DECORATING LTD

High quality interior and
exterior redecoration
Woodwork repairs and
replacements
Fascias, soffits and cladding

**01799 542385
07885 778213**

www.nickshutesdecorating.co.uk

YOUNG'S

WINDOW CLEANING SERVICE

We specialise in residential properties offering a quality
and regular service for exterior and interior cleans
Serving the Elsenham community for the last 10 years

Call or text Malcolm for a FREE quote
07817 481901



The Society's website has been expanded to include a new series of interesting walking routes. The website already has 20 walks that start and finish at railway stations but their attraction has been severely reduced by the advice to avoid public transport during the coronavirus pandemic. Now the walks area of the website has two sections: Station Walks and Other Walks.

The new walks are all 'circular', starting and finishing at a location where there is normally space to park. The routes have been chosen for their attractiveness and level of interest, something which is not too difficult within the Hundred Parishes. The number of Other Walks is increasing all the time; in due course we hope that each of the hundred parishes will feature in at least one walk.

All walk descriptions can be downloaded and printed. Each includes clear instructions to help you find the way and there is also an outline map of the route. Within the description there is a short introduction to some of the places you will pass. The new walks range in distance from 1 mile to 10 miles.



We hope you will be able to try them out and we would be pleased to receive any feedback. If you particularly enjoy a walk, do please encourage others to enjoy it too. Please bear in mind that the usual pubs and tea rooms may not yet be open or may offer only a limited service. Walking boots or stout shoes are generally encouraged, although during dry periods they may not be needed.

Now that most of us can get out, please take the opportunity to explore new parts of our attractive countryside, villages and small towns. There is so much to appreciate in the Hundred Parishes.

The Hundred Parishes is 450 square miles of northwest Essex, northeast Hertfordshire and southern Cambridgeshire that is largely unspoilt and is richly endowed with many fine examples of agricultural and built heritage. The area has shared a common history which shaped and preserved its distinctive landscape of small and medium-sized farms linked by winding lanes and ancient rights of way to hamlets, villages and then to small market towns. For more information visit www.hundredparishes.org.uk.



The Executives Choice Chauffeur Company providing clients with premium transport at affordable prices. Airports, sporting events, theatre trips etc.

Corporate accounts welcomed.
7 Seater available

To discuss your requirements

Contact Graham Anderson: graham@execschoice.com

Phone 07481 494988

www.execschoice.com

Your local, independent sales & letting agent

- Sell or let your home with no fuss & the best price possible
- Accompanied viewings weekends & evenings
- Fixed fees or percentage (No VAT to pay)

Call 01279 813318 to book a free, no obligation valuation.



rightmove Zoopla PrimeLocation nTheMarket.com

1 Station Road, Stansted, CM24 8BE
Email: peter.james@murdochsestateagents.co.uk
www.murdochsestateagents.co.uk



The Countryside Code

Respect other people

- Consider the local community and other people enjoying the outdoors
- Park carefully so access to gateways and driveways are clear
- Leave gates and property as you find them
- Follow paths but give way to others where it's narrow

Protect the natural environment

- Leave no trace of your visit, take all your litter home
- Don't have BBQs or fires
- Keep dogs under effective control
- Dog poo - bag it and bin it

Enjoy the outdoors

- Plan ahead, check what facilities are open, be prepared
- Follow advice and local signs and obey social distancing measures



*Bobby's
Construction
Services Ltd.*



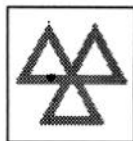
Specialised joinery and carpentry, wood flooring, painting and decorating, internal & external, tiling, kitchen, bathroom, decking, paving, electrical work

Contact us on: 01279 957770 or 07961 546929
bobbysm@hotmail.co.uk



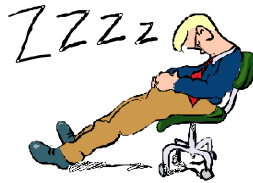
GARRETT'S GARAGE SERVICES

42 Golds Business Park, Elsenham
Bishop's Stortford, Herts CM22 6JX



- Mechanical Repairs
 - Servicing
 - Tyres
 - Engine Tuning
 - Computer Diagnosis
 - Windscreen Repairs
 - M.O.T.'s - Catalyst & Diesel Tested
 - E.H.D.C. - Authorised Hackney Carriage Testers
 - Batteries
 - Exhausts
- MODERN WELL MAINTAINED WORKSHOP*
- ALL MAKES OF VEHICLE*
- *FREE COLLECTION AND*
*DELIVERY SERVICE**

TEL: 01279 647777 FAX 01279 817622



Ray
Franklin

What Comes Next

In around six months time I expect new babies to be born in Elsenham. They will be affectionately known as "Coronials." These little bundles of joy will go on to ask their parents many interesting questions. "In that photo of you and daddy, were you bank robbers? Why were you wearing masks?" Other questions will surface, like "In that old diary dad gets all excited when he gets a slot and what is a slot anyway?" Will tomorrow's children find themselves with an unexplained desire to get up at midnight and go online to supermarkets?

Do you think there may be things passed through the generations? Perhaps they will start hoarding things. If they go walking will they find themselves distancing from their friends for no apparent reason? Will they have a desire for peace and search out places where birds sing? They may appreciate what simple pleasures their mater and pater enjoyed. They may find themselves getting pleasure helping their neighbours with shopping, going to collect items and just helping others with life. I think after lockdown we should all appreciate what we had before the epidemic. After learning about what occurred in 2020, the profession of doctor or nurse may seem very valuable. Then what comes next could be very good.



ST MARY'S FABRIC FUND ELSENHAM

Registered Charity No 1052884

By David Hill ☎ 812397



We are optimists here in the Fabric Fund. At the time of writing the prevalence of the coronavirus is slowly reducing, the number of deaths from Covid-19 is slowly decreasing and the lockdown is easing. Shops, restaurants, hairdressers, pubs etc are opening again and a measure of normality is returning. All of this gives us hope that this year we will be able to stage our Christmas Tree Festival in December once again.

So, get the date of Saturday 5 and Sunday 6 December in your diaries for a riot of Christmas trees in the Church and keep hoping, as we are, that there will be no second wave of infections. We will be starting our planning in the near future and more details will be posted in the next edition of *Elsenham News*.

In the meantime, stay safe and start thinking about how best to decorate that tree!



T.J. Patmore
Building Services

- Extensions – Loft Conversions
- Roof work – Carpentry – Roof Tiling
- First and second fix carpentry
- Kitchen fitting
- Built in wardrobes
- Decorating interior and exterior
- Floor and wall tiling
- Fencing – Decking – Patios
- Supply and fix u.p.v.c. windows
- House maintenance

*Call Trevor for friendly help, advice
and FREE estimates*

tel 01279 816097
mob 07932 666224



BMH

**WINDOW CLEANING
& GARDEN SERVICES**

- Window Cleaning**
- Gutter Cleaning**
- Commercial Window Cleaning**
- Garden Services**
- Excellent Rates**
- Professional & Trustworthy**
- Fully Insured**
- References on request**
- 07852 722139**

“Get rid of the grime with a Tony shine”

hpc (State Registered)
Chiropodist

CH09088

Home Visiting Practice

Mrs Julie Golden
Est. 1994
01279 873492

A professional service at a
competitive rate



Advertise your
business in Elsenham
News

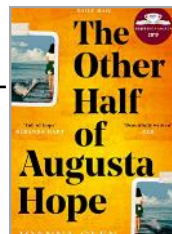
Contact us at

elsenhamnews@hotmail.co.uk

THE OTHER HALF OF AUGUSTA HOPE

By Joanne Glen

Reviewed by Marion Giles



'Augusta Hope has never felt like she fits in. At six, she's memorising the dictionary. At seven, she's correcting her teachers. At eight, she spins the globe and picks her favourite country on the sound of its name: Burundi.

And now that she's an adult, Augusta has no interest in the goings-on of the small town where she lives with her parents and her beloved twin sister, Julia. When an unspeakable tragedy upends everything in Augusta's life, she's propelled headfirst into the unknown. She's determined to find where she belongs – but what if her true home, and heart, are half a world away? . . .' So says the blurb on the back of the book.

Reviews:

- 'A joy...the humour and pathos in their stories lends real heart and soul' *OBSERVER*
- 'A moving tale... sure to make you cry... Parfait [is] a convincingly serious, sweet, clever and funny person who ends up carrying the story... an epic hero ... It's going to be all over every book club in Britain before you can say Burundi' *The Times*

This was the choice of the book group this month. Generally the book was liked - particularly the first half when Augusta is a child. Some of us felt that the latter half was a bit slow and somewhat contrived. Also, some of the quirkiness of Augusta that was endearing as a child was a little irritating in an adult. No plot spoilers but nearly all of us would have preferred a slightly different ending as the way the story progresses relies heavily on coincidence.

Augusta's story is told in alternating chapters with a young man, Parfait, from Burundi.

Augusta and Julia (the pretty one) grow up in suburbia, with very conventional parents, who are, very much, creatures of habit. Julia finds love at a young age and wants to be married to Diageo, the 'boy next door' and have a family. Augusta yearns for more than that and wins a place at Durham University. There she begins a relationship but they are from two different worlds and it does not last. Diageo's family has a property in Spain and after holidaying there with her family as a child, Augusta develops a dream to live there.

Parfait's story is of a young man trying to keep his family together through war-torn Burundi, which is not successful and the family is broken. Parfait's parents die and his siblings experience terrible events. This determines Parfait to find a different life story for himself.

Options Hair Design and Hair Loss Clinic

An essential choice with a passion for hair

We welcome you with a complete in-depth consultation, whether this is for a change of style or colour or for more clinical advice on the health of your hair and scalp.

For clients visiting The Hair Loss Clinic we are able to offer a completely private consultation and treatment room away from the main salon. We offer proven treatments for hair loss and also provide a complete wig fitting and finishing service. We work closely with a leading UK Trichologist who holds regular clinics with our clients.

Our products are organic and formulated to enhance your hair health. Our dedicated stylists will work with you to achieve the look and feel that you want. Our salon has parking right outside and a warm welcome awaits you.

Elsenham Salon 01279 812665

Bookings not always necessary

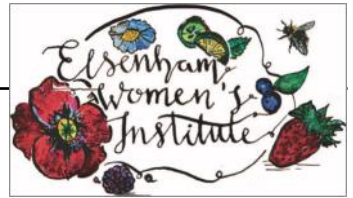
www.optionssalon.co.uk

Hair Loss Clients please call Ann on 07957 166436



ELSENHAM WOMEN'S INSTITUTE

By Moyra Jackson ☎ 647351



Lovely spells of sunshine, high winds and torrential rain – if it wasn't for the sunshine I would think it was a Scottish summer! Good for the garden though.

Who would have thought that Mindfulness could be so effective on Zoom – we had a fabulous evening with Donna Negus. Donna talked us through some strategies to manage everyday anxiety, especially useful in these very strange times. We had around 30 members and friends online and we all took part in some easy routines. It was quite incredible the effect it had on us all. We always have a chat after the talks are finished and despite several of us being quite sceptical about the benefits of Mindfulness before we started, we were all singing its praises after.

We continue to keep in touch with our members by phone, text and a monthly newsletter compiled by our Secretary, Gill Hathaway. We have book reviews, recipes, garden tips and articles from our members making it an excellent read. Many of us have also been taking part in the online talks and courses offered by the WI College, Denman as an alternative to their programme of residential courses. Everything from cookery, the arts and history is covered and they are excellent, far more convenient (and cheaper) than travelling to Oxfordshire too!

Our Natter Nights take place every Tuesday from 7.30pm. There's nattering and crafting going on. It's really good to talk and see one another. We do miss Barbara's cakes though!

Our next monthly meeting is on 20 August and Sam Briggs will be our Quiz Master for the evening. Sam has run quizzes through lockdown for friends and family and they have been excellent, so thinking caps on! The remainder of our year looks like this:

- 20 August, Quiz Night with Sam Briggs
- 17 September, Simon Gregor: London – an Illustrated History
- 15 October, Taming the Flood – A Beaver's Tale with Darren Tinsley
- November and December - TBC

Members will be provided with joining information for all these meetings. For any of our members who are still a little apprehensive about taking the plunge Zoom-wise, please let me know and I will be happy to help you.

If you are not a member and would like to come along please contact me for further details – we are always happy to welcome visitors. Our monthly meetings start at 8pm and are on the 3rd Thursday every month. Natter Night is also open to all.

This month's photo is another blast from the past. Chris Bush provided this photograph, from Elsenham History Society's archives. I have no information regarding the year – but I really love those hats.



Love and best wishes from all at Elsenham WI. Stay Safe.

Do-It-4U

Repair, Care & Maintenance

For your Home and Garden

- ◆ Plumbing, Electrical & Carpentry Services
- ◆ Drain Blockages Cleared
- ◆ Gutters Cleaned, Repaired or Replaced
- ◆ Gardens Tidied & Maintained
- ◆ Hedges & Topiary Trimmed & Shaped
- ◆ Fences Erected & Repaired
- ◆ Sheds & Other Sectional Buildings Erected

Telephone
01279 814411
Mobile
07774 877320

EMVY

beauty

Qualified Eyelash Technician and Make-Up Artist / Leigh Drive -Elsenham

Eyelash Extensions

Classic Eyelash Extensions

These lashes bring a thicker extension to natural eyelashes recommended for a natural look.

£15

Hybrid Eyelash Extensions

A combination of classic and Russian volume eyelashes resulting in a thicker enhanced look

£18

Russian Volume Extensions

These lashes create a full, thick and dramatic look, recommended for those who want extra coverage

£20

March - June %%% Offer

Bring a friend and get any set of eyelash extensions for £10 each!

Make-Up

Full Face of Makeup including fake eyelashes

This treatment includes a full face cleanse, with a full face of makeup in your desired style and fake eyelashes

£15

Full Face of Makeup without fake eyelashes

All of the above, without fake eyelashes

£13

Full Face of Makeup with Classic or Hybrid Eyelash Extensions

This offer is for a limited time only!

£25

CONTACT: 07969747609 (text only)
emilysbannerman@gmail.com

Redundancy: key information



citizens
advice

Your employer may make you redundant for many reasons, including:

- the business has closed down
- the business area in which you work closes down
- there is a reduced need for employees to do a particular type of work.

The legal rules surrounding redundancy are complex but the following should take place:

- You should have been consulted and given notice. There are statutory minimum notice periods, depending on how long you have worked for your employer
- Is there an alternative to redundancy?
- The process should be fair, not discriminatory
- All holidays should be paid
- Your employer can make you redundant even if you are furloughed
- You must have two years' continuous service to qualify for a statutory redundancy payment
- If you are pregnant you have extra protections

Voluntary redundancy? Think about how voluntary redundancy will affect any money you are entitled to. Ask your employer about the redundancy package.

Claiming benefits To claim Universal Credit after taking voluntary redundancy, Turn to Us is a useful website www.turn2us.org.uk or contact us.

Planning for after redundancy If you've worked for your employer for two years at the end of your notice period, you're entitled to time off to apply for jobs. Contact your local Job Centre Plus and ask for their Rapid Response.

The Job Help website <https://jobhelp.campaign.gov.uk/job-search-ideas/>

To change careers <https://nationalcareers.service.gov.uk/>

Adult education opportunities and support for people with mental health issues on www.uttlesfordfrontline.org.uk

More information

- **GOV.UK** has more info on redundancy rights and help to find work.
- **Citizens Advice** citizensadvice.org.uk/work/leaving-a-job/
- **Money Saving Expert** moneysavingexpert.com/family/redundancy-help/

Uttlesford Citizens Advice. Barnards Yard, Saffron Walden, CB11 4EB
Monday to Friday 9.30 to 3.30

☎ **01799 618840** 📄 uttlesfordcab.org.uk ✉ bureau@uttlesfordcab.cabinet.org.uk

Spellbrook Garden Design

DRIVEWAY & GARDEN DESIGN

- ✓ Decorative Walling and Fencing
- ✓ Patios & Paths
- ✓ Block paving, Tarmac and Graveling
- ✓ Decking
- ✓ Turfing, Garden design and build
- ✓ Stone cleaning

spellbrookgardendesign.simdif.com

Tel: 07799 603089 / 01279 503936 / 0800 696 5257

Westwoods, London Rd, Spellbrook CM23 4AH



Checkatrade.com

myBuilder.com

Paddy McKeown



WALDEN Sweeps

- ◆ Services offered include:
- ◆ Chimney and Flue Sweeping
- ◆ Wood Burning Stoves
- ◆ Open Fires
- ◆ Aga/Rayburn
- ◆ Bird Nest Removal
- ◆ CCTV Examinations

t: 01799 599981

m: 07956 099788

e: paddy@waldensweeps.myzen.co.uk

WWW.WALDENCHIMNEYSWEEPS.CO.UK

Essex Autospray

Your local Collision Repair Centre - Est 1982

- Free Courtesy Cars
- Free Estimates
- Low Bake Ovens
- Blackhawk Alignment



Tel: 01279 816296 E: info@essexautospray.co.uk

www.essexautospray.com

M11 Business Link, Parsonage Lane,

ELSENHAM BOWLS AND SOCIAL CLUB

By Sue Waite ☎ 07956 899326 ✉ suewaite2003@yahoo.co.uk



Although bowling members have been able to use the green for socially distanced bowling for a few weeks now, hopefully, by the time you read this the whole of the Bowls Club would have been able to open as of Monday, 27 July for social members and bowling members to enjoy the bar facilities.

All being well, the Bowls Club will now be open for 3 nights, Monday, Wednesday and Friday from 7pm - 11pm. There is table service only and tables need to be booked in advance – there is no service from the bar for members. We are adhering to guidelines from the government with respect to social distancing, staff will be wearing visors and hand sanitiser will be available for your use on entry to the club.

We are very excited to be open again after so long and hope that you will join us on one of our evenings. No social events such as bingo or darts have started yet but we hope to do this in the very near future.

The Bowls Club is open to members only but visitors are welcome and they can be signed in by a member. If you wish to become a social member then the cost is £5 and forms can be obtained from the Bowls Club.

There are plans in the pipeline to begin taking card payments at the bar of the Bowls Club so watch this space for more details. Hope to see you all very soon – keep safe.

Hatfield Forest

Hatfield Forest is open again to National Trust members and non-members. Facilities that are available are the open wood pasture grassland and shady woodland with grassy paths, internal car parks, unisex toilets with baby changing room, outdoor picnic seating next to Lake. Dogs are welcome



but must be kept under close control at all times, on leads near livestock and wherever signs say to do so. You will need to book your car parking space in advance. Members can book for free, while non-members will need to pay when booking. We'll be releasing tickets every Friday from 12 June and you will need to book your car parking space by 3pm the day before your visit. Fees range up to £8. <https://www.nationaltrust.org.uk/hatfield-forest/whats-on>

smnailsandlashes



Sophie May - Nail and Lash Technician




sophie May
NAIL AND LASH TECHNICIAN

Home Based salon

Monday's - first two of each month. 11am - 4pm
 Fridays 11am - 6.30pm
 Saturdays 11am - 4pm
 Message via Facebook or Instagram to book in

FULLY QUALIFIED AND INSURED



TREATMENTS INCLUDE ACRYLIC EXTENSIONS, GEL POLISH, LASH LIFT AND TINT AND PEDICURES



BEAUTIFUL, RELAXING ENVIRONMENT

KINGSWOOD PLACE
 ELSENHAM
 CM22 6GX



Naomi Gardening & Design

Creating outdoor spaces for living

-  Garden Maintenance & advice
-  Garden design & Consultation
-  Bespoke planting designs

Call for a free estimate

M: 07778 620576
 E: Naomi@NaomiGardenDesign.co.uk
 W: www.NaomiGardeningandDesign.co.uk

Trained at Capel Manor College

DANIEL ROBINSON & SONS

Independent Family Funeral Directors & Monumental Masons

Est 1892

Always here when you need us...

- Arrangements in the comfort of your own home, if preferred
- Private Chapel of Rest
- Pre-paid funeral planning services
- Traditional & contemporary funerals to suit your wishes



**79/81 South Street
 BISHOP'S STORTFORD
 01279 655477**

www.drobinson.co.uk

ELSENHAM TENNIS CLUB

By Petra Studholme ☎ 01279 814667



Elsenham Tennis Club is open for play!

Our reduced membership fees (pro rata to start in June until end of March) are as follows:

Adult - £55

Couple - £95

Family - £105

Senior - £30

Student - £30

Junior - £12.50

Further benefits (once normal play is allowed to resume): regular club nights, Sunday afternoon leisure play, ladies' Friday morning play, weekly Wednesday evening coaching sessions and much more. We do have floodlights, operated by tokens so you can play until late in the evenings, summer and winter. For more info, go to

www.elsenhamtennisclub.co.uk.

Court bookings for members – subject to change if advice from the government and LTA guidelines change

All bookings to be made online, no turn up and play, to ensure that we do not have too many players on one court at any time. We strictly adhere to LTA and government guidelines. Additional measures are in place to ensure all our members' safety.

Court bookings for non-members (court hire) – subject to change if advice from the government and LTA guidelines change

In line with government and LTA (our governing body) guidelines, Elsenham Tennis Club is opening up the courts to hire again. We must stress that we will review this if any advice on use of outdoor spaces changes. We will also insist that everyone using our facilities adheres to the strict measures we will put in place to ensure social distancing, public safety and hygiene with regard to hand washing, using sanitisers and wiping down commonly used surfaces such as locks, handles and the net equipment. Those in self-isolation are not allowed to use the courts until their full isolation time period has elapsed. All important safety details will be displayed on notices at the courts. For further up to date info, please refer to our website.

Coaching update – subject to change if advice from the government and LTA guidelines change

Individual lessons with Steve are available, but be quick to make sure that he and the courts are available when you want to play – to find out more see our website (details above) or email mail@elsenhamtennisclub.co.uk.

We are now starting some group lessons (small numbers of people on the courts as per guidelines).

Ladies' mornings: both the Wednesdays and Fridays meetups have resumed, adhering to LTA advice with limited numbers of attendees, we have a pre-booking system in place.

WEEKLY ACTIVITIES are currently suspended until further notice – keep an eye on the ETC website and follow us on Facebook for the latest info.

CLEAR OVENS

Oven Cleaning Specialists

01279 89 89 96

we accept cards!

Make your oven look showroom fresh with a professional clean from Clear Ovens. Our fully insured expert technicians will make it shine like new.



Instagram



The Association of Approved Oven Cleaners



MEMBER OF THE FEDERATION OF SMALL BUSINESSES

Covering Sawbridgeworth, Harlow Epping, Great Dunmow, Braintree, Stansted, Bishop's Stortford and surrounding areas.

01279 89 89 96 or visit us online at www.clearovens.co.uk

The difference is clear

JOHN COLEBY

Experienced Interior and Exterior Decorator

For a friendly, reliable service please telephone
01279 815510 or 0793 9070818
for a free estimate

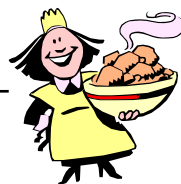
FROM THE PARISH REGISTERS

Funerals:

- Service of Thanksgiving at Henham Cemetery on 16 July 2020, Antony Bizley Foster, aged 95 years, of Highfield Care Home, Stansted Mountfichet.
- Service of Thanksgiving at St Peters Ugley graveside on 1 July 2020, Brian Raymond Reed, aged 77 years, of Bedwell Road, Ugley.
- Service of Thanksgiving at Cam Valley Crematorium followed by cremation on 16 June 2020, Nellie Allen, aged 95 years, of Cambridge Road, Ugley.

COOKERY CORNER

By Sue Johnson ☎ 812704



Here is a very quick and easy supper dish. It's a good idea to have everything ready to go before you heat up the pan. The recipe serves four, but can easily be halved.

CRISPY FRIED RICE WITH PRAWNS & GREEN BEANS (Serves 4)

- 4 tablespoons vegetable oil
- 12oz (300g) peeled raw tiger prawns
- 6oz (150g) green beans, trimmed and cut in half
- 5 garlic cloves, crushed
- 1 inch (5cm) piece fresh ginger, peeled and finely grated
- 2 tablespoons soy sauce
- 1 tablespoon fish sauce, or extra soy sauce
- 2 limes, zested and juiced
- 2 red chillis, halved lengthways, deseeded and thinly sliced
- 10oz (240g) cooked and cooled jasmine rice
- Handful of unsalted roasted peanuts or cashew nuts
- Small handful of coriander leaves
- Leafy salad, with sliced tomatoes, to serve

Heat the oil in a large wok or pan over a high heat. Once extremely hot, add the prawns, green beans, garlic, ginger, soy sauce, fish sauce, lime zest and juice and most of the chilli. Stir-fry for 2-3 minutes until the prawns are almost cooked. Keep everything moving all the time so as not to burn the garlic.

Add the rice, mixing everything together. Toss a few more times until the rice begins to crisp. This may take a little longer with freshly cooked rice as it will have more moisture. Season to taste with salt and pepper. Don't use more soy sauce as this will result in the rice being less crispy. Serve immediately, with the remaining chilli, roasted nuts and coriander scattered over.

CHEF'S RECOMMENDATIONS: Large cooked king prawns are fine for this recipe, if you can't get hold of raw prawns. Cook the rice in advance, so it is quite cold when you want to add to the recipe. This is an ideal way to use up leftover rice, but do not re-heat more than once. Pouches of pre-cooked rice are also brilliant - you'll need two packs to serve four people.

Editorial Information

Articles

The **last day** for editors to receive articles, advertising and letters, which must contain the author's name and address (which may be withheld), is **the 12th of each month**.

Articles should ideally consist of a half page of A5 or a full page of A5. Articles over these sizes or letters containing more than 500 words may be edited depending on space.

Copy submitted after the 12th may not be accepted but will, if deemed appropriate, be held over to the next month. We are happy to receive handwritten articles that ideally should reach us earlier than the 12th to allow for scanning etc.

Dates for the Diary must include date, event, venue and time.

Please submit all articles, adverts, letters and queries to the editorial team at: elsenhamnews@hotmail.co.uk

General Notes

Whilst every effort is made to ensure that information is correct, the editorial team cannot be held responsible for any inconvenience caused through errors or omissions.

The views expressed within this magazine are not necessarily the views of the editorial team or Elsenham Community Association (ECA).

The editors and the ECA can accept no responsibility for the goods or services advertised in the magazine. Advertisements are included in good faith. The editors reserve the right to allow replies to letters/articles to be made in the same edition when appropriate.

The editors' decision is final.

Wanted/For Sale items: village residents may submit details of items wanted or for sale at no charge. These will be included in the next available magazine subject to space and acceptance by the editors.

Subscriptions

Elsenham News is available by email (on a pdf) at no charge, or through the post at a cost of £13 per annum. Contact Sarah, see details below.

Advertising

The costs are as follows:

	Single Insertion	Annual Cost (11 issues)
Half Page	£20	£190
Quarter Page	£10	£100
Inside Page	£50	n/a
Back Page	£75	n/a

Village organisations attract reduced rates, £5 for ¼ page. Half and full-page adverts attract full rates.

To place an advertisement:

For any queries please contact us. Please send your advert as Word or Publisher via email to elsenhamnews@hotmail.co.uk

Once your advert has been approved and you are happy with it, you will be sent an invoice, which should be paid by BACS.

Flyers

It costs £50 to insert an advertising flyer into the magazine. You must let us know by the deadline of the 12th. You must also provide the flyers.

Editorial Team

Sarah Alder	817660
Marion Giles-Donovan	812763
Heather Baxter	812924

ECA Website

www.ElsenhamCommunityAssociation.org.uk

If you respond to one of the adverts in the magazine, please tell the advertiser that you found them in *Elsenham News*.



UPCOMING EVENTS TBC

Santa visits the village 5 December
Christmas Tree Festival 5-6 December

VILLAGE CONTACTS

Airport Roadside Parking		0800 731 2385
Beavers	Jackie Weston	816282
Bowls Club	Jean Platt	816151
Brownies	Jennifer Jarvis	814434
Church Office (Old Frank's, High St, Elsenham)	Anna Hicks	814285
County Councillor (Stansted)	Ray Gooding	813103
Cricket Club	David Brown	831011
The Crown pub	info@thecrown.info	814444
Cub Scouts	Linda Gleeson	850504
Cycling Club (Victoria CC)	Doug Yareham	07884 040892
Elsenham Community Association (ECA)	www.ElsenhamCommunityAssociation.org.uk	
ECA (Chairman)	Allan Hathaway	813385
ECA (Secretary)	Jill French	647543
Elsenham Surgery	www.elsenhamsurgery.nhs.uk	814730
Elsenham C of E Primary School	Linda Reid, Headteacher	813198
Elsenham Church PCC Secretary	David Hill	812397
Elsenham Rights of Way website	www.e-voice.org.uk/erowos/	
Friends of Elsenham School (FOES)	Gemma Mills	07745 036066
Guides elsenhamguides@gmail.com	Gemma Lewis	07792 572423
Henham & District Garden Society	Moyra Jackson	647351
History Society	Mike Rea evhs12@hotmail.co.uk	813634
Member of Parliament	Kemi Badenoch	0207 219 1943
Memorial Hall Bookings	Cheryl Rae	817834
Neighbourhood Watch Co-ordinator	Frances Lambert	07771 728332
	franceslambertnhw@btinternet.com	
Parish Clerk - Louise Johnson	louise.epc@gmail.com	07456 791727
Elsenham Parish Council Website	https://elsenham-pc.gov.uk/	
Police		101
Post Office		812175
Rainbows	Petrina Lees	816675
St Mary's Fabric Fund	Elizabeth Barker	813543
Tennis Club	Petra Studholme	814667
Tots & Toddlers	Trudi Marsh	899864
Uttlesford District Councillors	Petrina Lees	816675
(for Elsenham & Henham)	Garry LeCount	07836 346717
Village Hall Bookings	Annie Gleeson	07809 490731
Village Hall email address	elsenhamvillagehall@gmail.com	
Women's Institute	Gill Hathaway	813385
WI website	www.elsenhamwi.co.uk	
Youth Football Club (Chairman)	Paul Jarvis	814434

If you would like your village organisation contact to appear regularly in the magazine, please contact one of the editors, see opposite for details.



NEWPORT PIZZA

www.newportpizzasw.co.uk

**2 PIZZAS FOR
£20 ANY SIZE!**



COLLECTION & DELIVERY

Grab this amazing offer
while it lasts.

Free delivery to Elsenham
& nearby villages

07378 879899

07378 874647